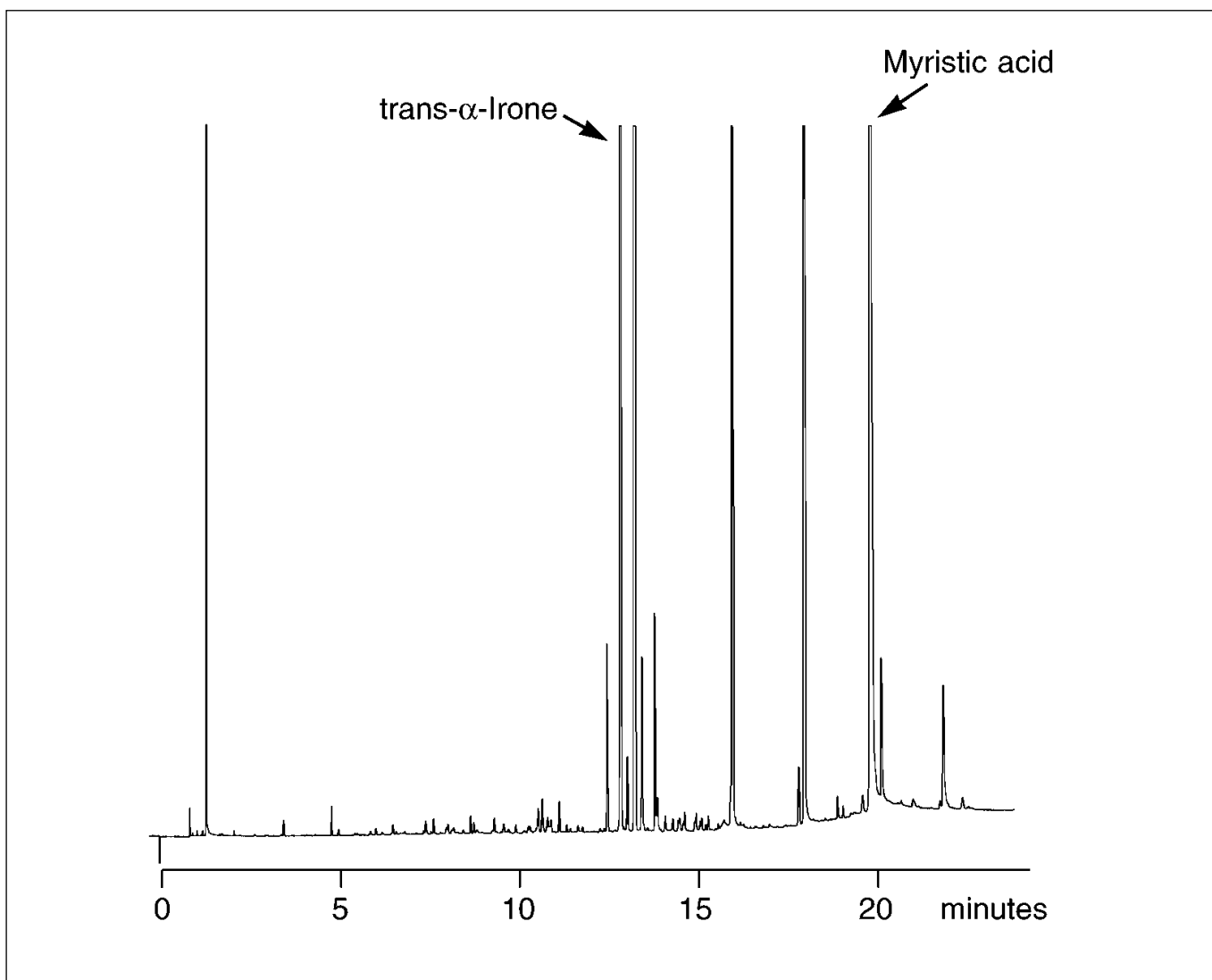


Analysis of orris concentrate

BP20 (WAX)

Column part number	054436		
Phase	BP20 (WAX)	Final temperature	250°C, 10 min
Column	25 m x 0.32 mm x 0.5 µm	Carrier gas	He, 10 psi
Initial temperature	70°C, 1 min	Injection mode	Split (50:1)
Rate	10°C/min		



For more information visit www.trajanscimed.com or contact techsupport@trajanscimed.com