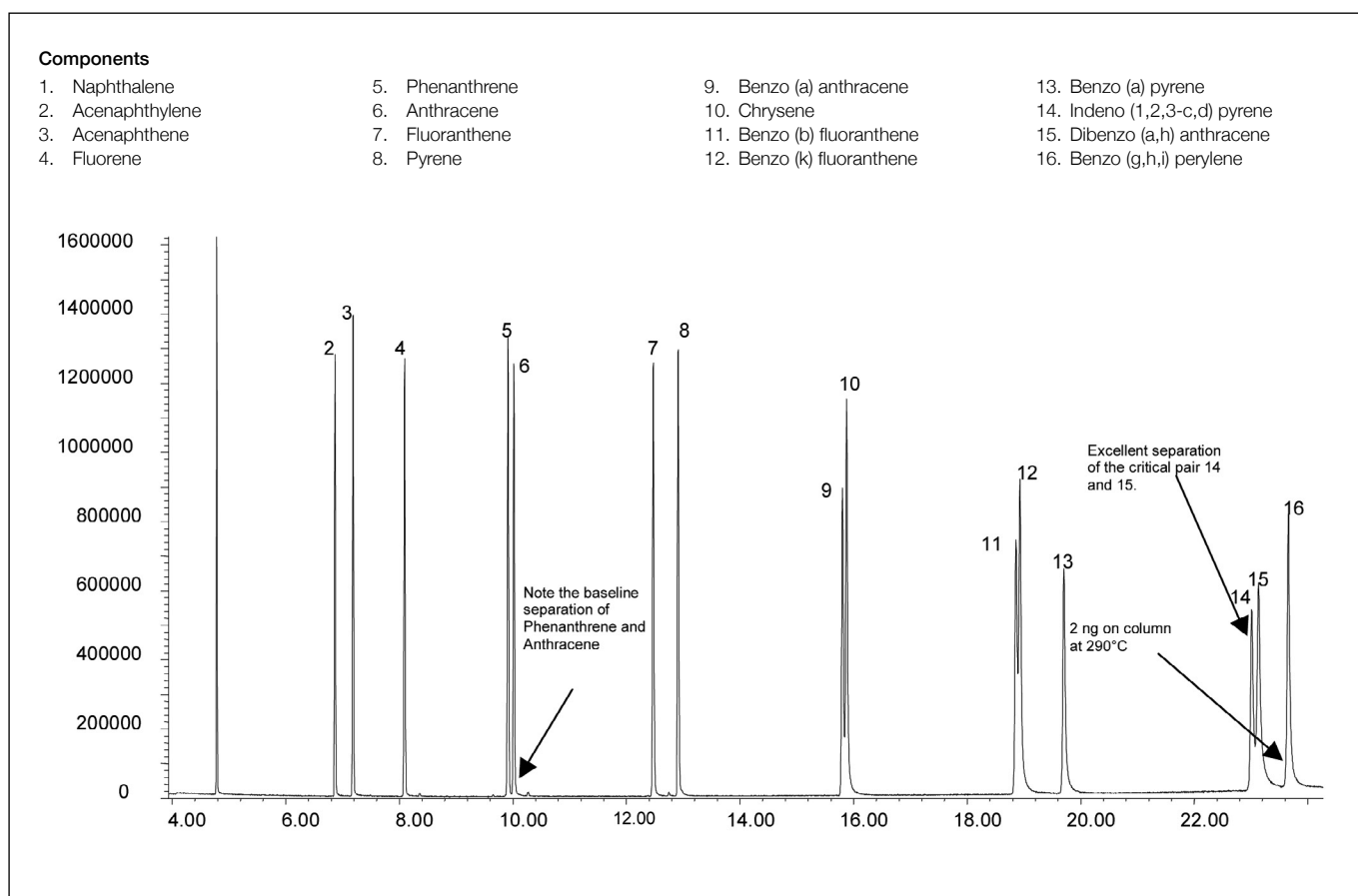


Analysis of polynuclear aromatic hydrocarbons (PAH)

SolGel-1ms™

Column part number	054795		
Phase	SolGel-1ms™	Carrier gas flow	1.7 mL/min
Column	30 m x 0.25 mm x 0.25 µm	Constant flow	On
Sample	100 ppm in dichloromethane	Average linear velocity	35 cm/sec at 65°C
Initial temperature	65°C, 1 min	Injection mode	Split (50:1)
Rate 1	25°C/min to 140°C	Injection volume	1 µL
Rate 2	10°C/min to 240°C	Injection temperature	250°C
Rate 3	5°C/min to 300°C	Autosampler	No
Final temperature	300°C, 2 min	Liner type	4 mm ID Single Taper
Detector	MS	Full scan / SIM	Full scan 40-500
Carrier gas	He, 27.8 psi		


 For more information visit www.trajanscimed.com or contact techsupport@trajanscimed.com