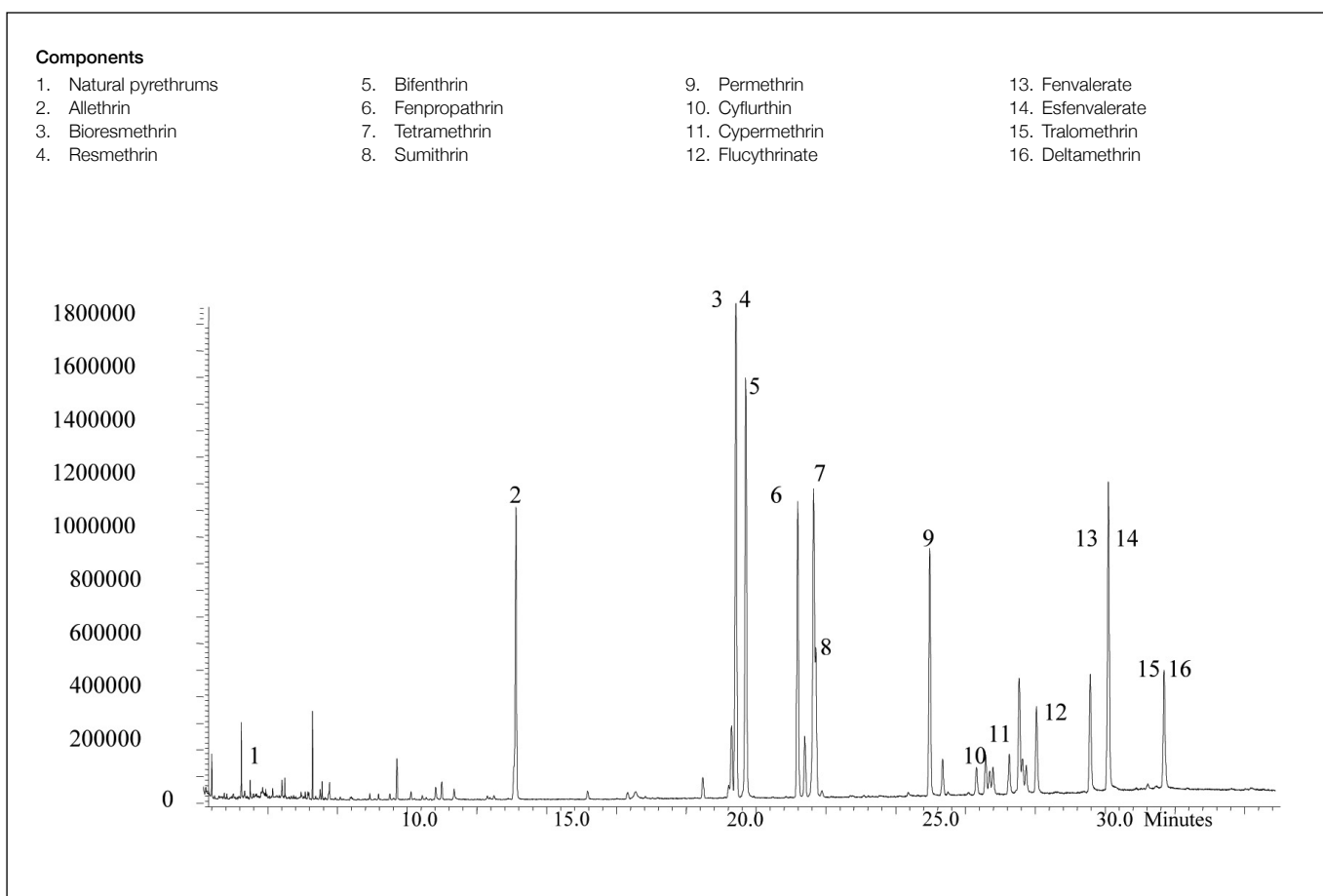


Analysis of 16 synthetic pyrethroids

BPX35

Column part number	054701		
Phase	BPX35	Constant flow	On
Column	30 m x 0.25 mm x 0.25 μ m	Average linear velocity	35 cm/sec at 50°C
Sample	10 ppm in methanol	Injection mode	Splitless
Initial temperature	50°C, 1 min	Purge on time	0.5 min
Rate 1	30°C/min to 200°C	Purge on (split) vent flow	60 mL/min
Rate 2	4°C/min to 300°C	Injection volume	1 μ L
Final temperature	300°C, 5 min	Injection temperature	250°C
Detector	MS	Autosampler	No
Carrier gas	He, 6.8 psi	Liner type	4 mm ID Double Taper
Carrier gas flow	0.9 mL/min		



For more information visit www.trajanscimed.com or contact techsupport@trajanscimed.com