

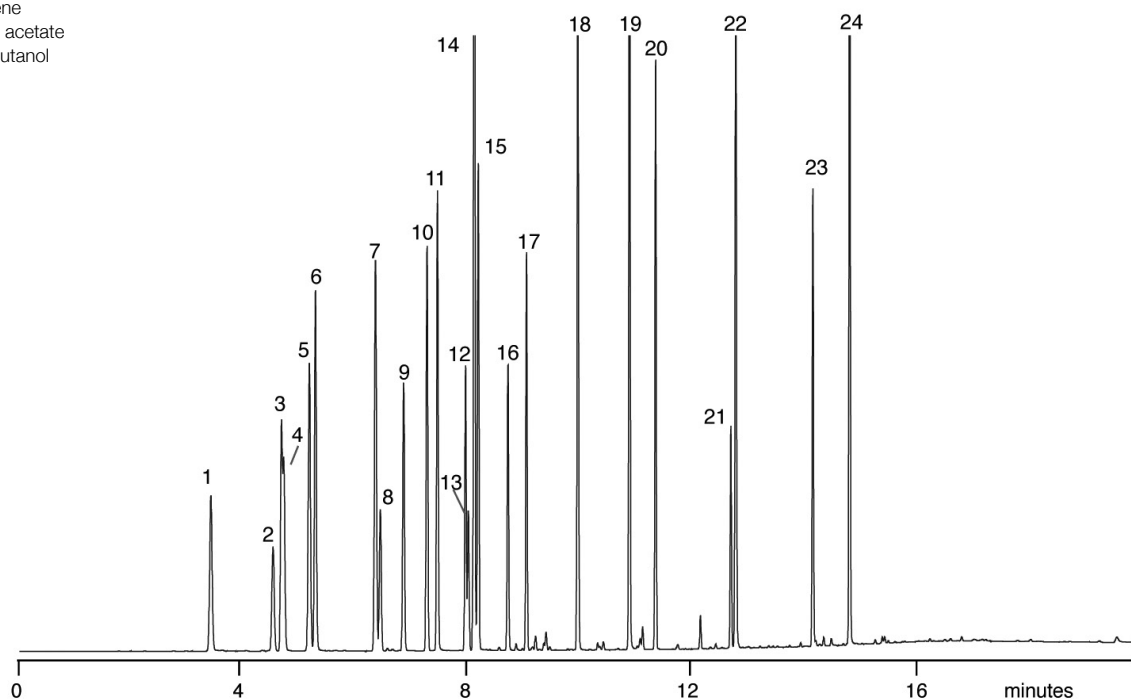
Industrial solvents

SolGel-WAX™

Column part number	054797		
Phase	SolGel-WAX™	Detector	FID at 270°C
Column	30 m x 0.32 mm x 0.5 µm	Injection mode	Split (83:1)
Initial temperature	35°C, 3 min	Carrier gas	He, 8.4 psi, 35 cm/sec at 35°C
Rate	15°C/min	Injection volume	0.1 µL
Final temperature	230°C, 4 min	Liner type	Single taper

Components

- | | | | |
|---------------------------|---------------------------------------|------------------------------|----------------------|
| 1. Acetone | 11. Propylene glycol monomethyl ether | 16. o-Xylene | 21. Hexyl cellosolve |
| 2. Ethyl acetate | 12. n-Butanol | 17. Butyl cellosolve acetate | 22. Isophorone |
| 3. Methyl ethyl ketone | 13. Ethyl benzene | 18. Cyclohexanone | 23. Butyl carbitol |
| 4. Contaminant | 14. p-Xylene | 19. Butyl cellosolve | 24. Benzyl alcohol |
| 5. iso-Propanol | 15. m-Xylene | 20. Butyl glycol acetate | |
| 6. Ethanol | | | |
| 7. Methyl isobutyl ketone | | | |
| 8. Toluene | | | |
| 9. Butyl acetate | | | |
| 10. iso-butanol | | | |



Sample description: TRPH mix 500 mg/L, 4 ng per component on column.

For more information visit www.trajanscimed.com or contact techsupport@trajanscimed.com