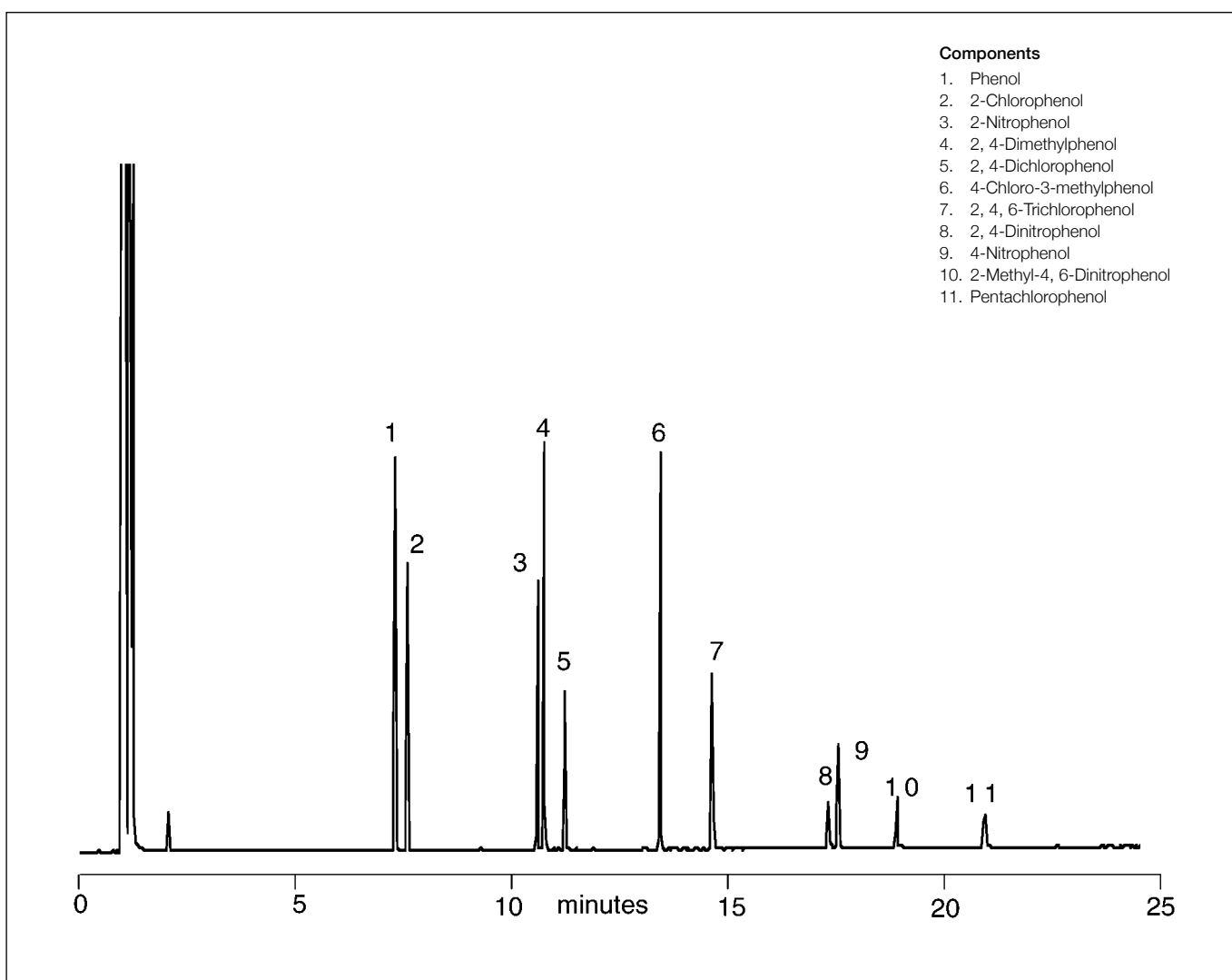


Analysis of phenols (USEPA 625)

BPX5

Column part number	054101		
Phase	BPX5	Detector	FID
Column	30 m x 0.25 mm x 0.25 µm	Detector temperature	380°C
Initial temperature	40°C, 1 min	Injection mode	Split
Rate	8°C/min	Carrier gas	H ₂ , 12 psi
Final temperature	360°C		



For more information visit www.trajanscimed.com or contact techsupport@trajanscimed.com