

OPERATING MANUAL

CORDLESS DRILL



18V/21V

SPECIFICATIONS

CHUCK: 3/8"(10mm)

Rated Voltage: 18V/21V

No-Load Speed I : 0-350rpm

Speed II : 0-1400rpm



Read through carefully and understand these instructions before use.

APPLICATIONS

- Driving in and loosening screws in wood, metal, ceramic and plastic.
- Drilling in wood, metal, ceramic and plastic.

SPECIFICATIONS

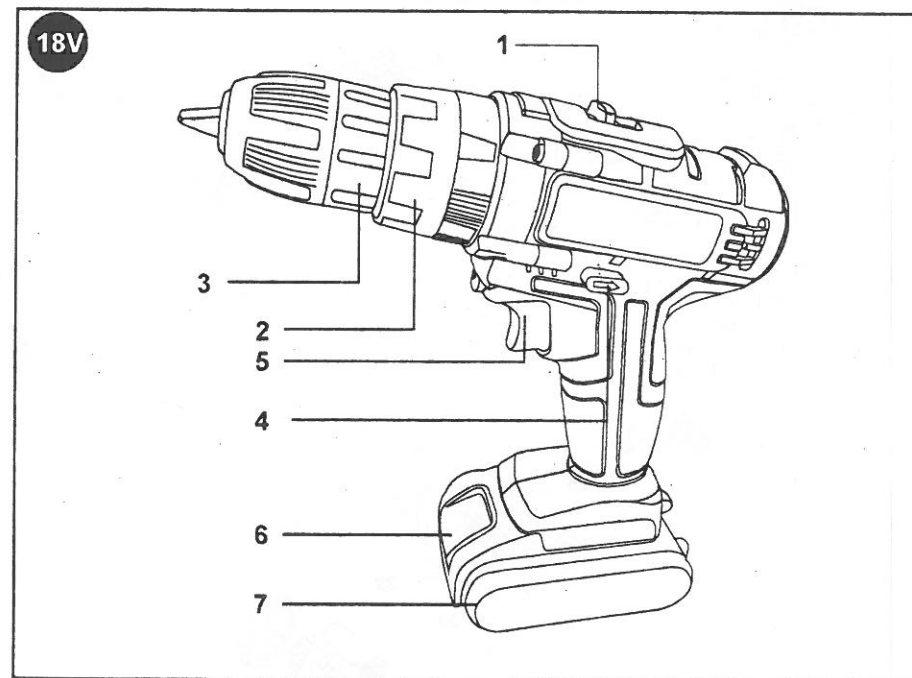
Power (DC)	18V/21V	
Max. Clamping Capacity	10 mm	
Max. Screw Diameter	7 mm	
Battery	Type	Li-Ion
No Load Speed	No-Load Speed I	0-350 rpm
	No-Load Speed II	0-1400 rpm
Max. Drilling Capacity	Steel	Ø10 mm
	Wood	Ø20 mm
Drill Spindle Threads	1/2-20UNF	
Net Weight	1.1 kg	

Due to the continuing program of research and development, the specifications herein are subject to change without prior notice.

ADDITIONAL SAFETY RULES

1. To be safe, disabled, retarded, untrained people or people disable to operate independently, including young children, are discouraged to operate the tool without supervision. Young children should be supervised to ensure that they do not play with the tool.
2. Check the tool and battery carefully before putting it into use. Stop operation immediately when malfunctions be found and send the tool to be repaired by qualified serviceman. Do not open the tool yourself.
3. Use only original LB10813-1type rechargeable Li-Ion battery for this tool and recharge only with the FFDC108-1 type charger supplied with the tool. Use of other type of battery or charger, e.g. imitated, modified or with other brand, may result in a risk of battery burst causing personal injury and property damage.
4. Be sure that the battery is installed correctly and tightly before operating the tool.
5. Always wear protective devices to avoid personal injury.
6. Hold tool by insulated gripping surfaces when performing an operation on wall and floor where the cutting tool may contact hidden wiring. Contact with a "live" wire will also make exposed metal parts of the tool "live" and shock the operator.
7. Use appropriate detectors to determine if utility lines, such as electric lines, gas lines and water lines, are hidden in the work area before screwing or drilling on the wall, floor or ceiling.
8. Keep working area well ventilated. Non-specified or damaged battery may produce poisonous gases causing personal injury.
9. Always be sure to have a firm footing and hold the tool firmly.
10. Be sure no one is below when using the tool in high locations.

GENERAL DESCRIPTIONS



- | | |
|---------------------------|-----------------------------|
| 1. Speed Selector | 5. Switch |
| 2. Torque Setting Ring | 6. Battery Unlocking Button |
| 3. Keyless Chuck | 7. Battery |
| 4. Reversing Switch Lever | |

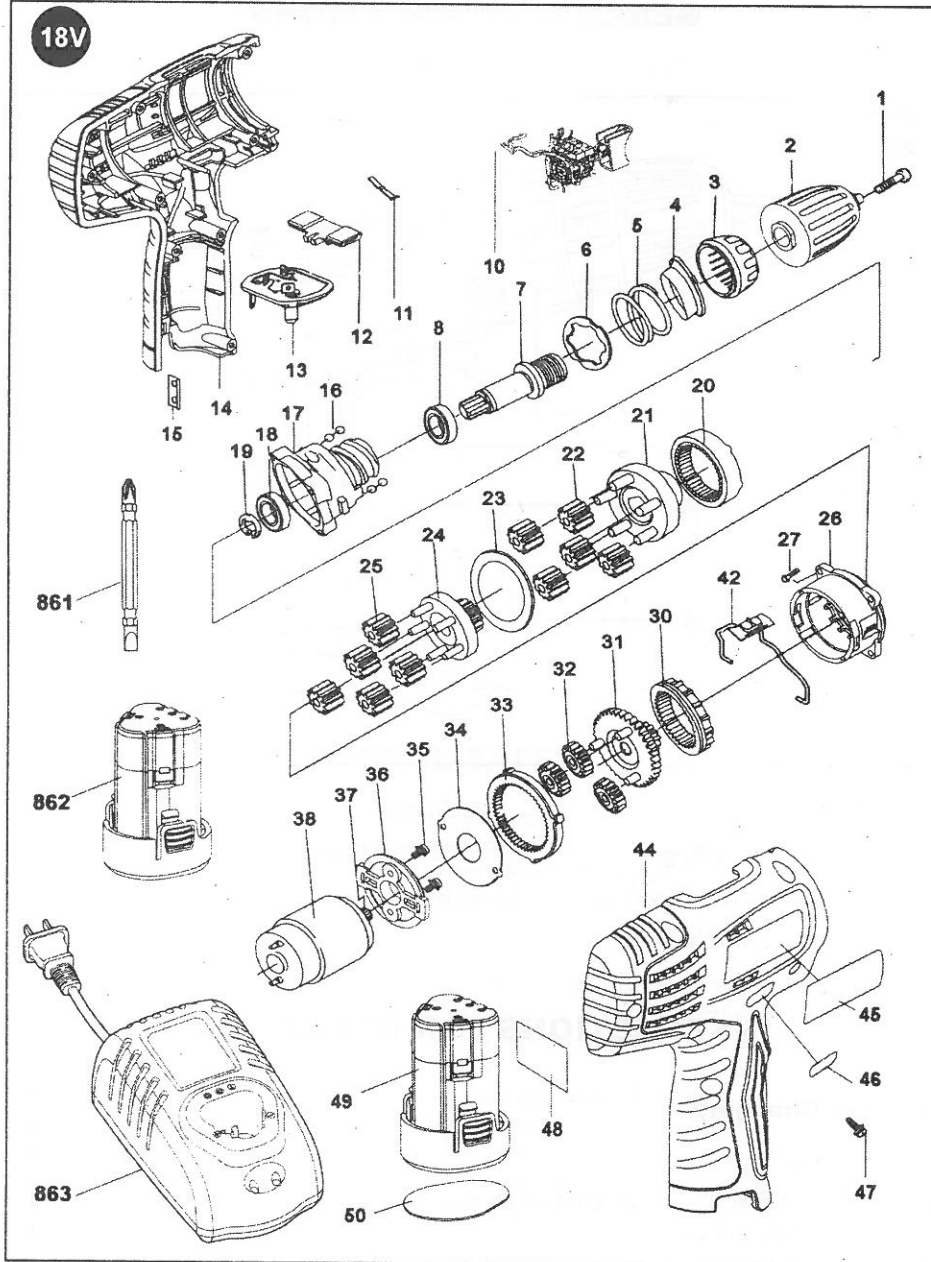
INSTRUCTIONS FOR OPERATION

Battery Charging

CAUTION:

- Make sure that the AC voltage of the power source meets the requirement specified on the nameplate of the charger.
- Fully charge the battery indoors before operating the tool with it. The battery was only partially charged before leaving factory.
- A significantly reduced working period after charging indicates a used up battery that must be replaced.

18V



EXPLANATION OF GENERAL VIEW

1	Pan Head Screw M6×20	30	2# Annular Gear
2	Keyless Drill Chuck	31	1# Planet Carrier
3	Torque Setting Ring	32	1# Planet Gear
4	Adjusting Nut	33	1# Annular Gear
5	Compression Spring	34	Shim
6	Shim	35	Pan Head Screw M3×6 (with Spring and Flat Washers)
7	Drill Spindle	36	Gear Case Cover
8	Ball Bearing 618-2RZ	37	Driving Gear
10	Switch	38	Motor
11	Click Plate	42	Speed Selector
12	Reversing Switch Lever	44	Right-half Housing Set
13	Terminal Block	45	Nameplate
14	Left-half Housing Set	46	Fuel Indicator Label
15	Clip Board	47	Pan Hd. Tapping Screw ST2.9×13
16	Steel Ball	48	Battery Pack Label
17	Front Gear Case	49	Battery Pack
18	Ball Bearing 618-2RZ	50	Battery Base Label
19	Circlip for Shaft	861	Driver Bit
20	3# Annular Gear	862	Battery
21	3# Planet Carrier	863	Battery Charger
22	3# Planet Gear		
23	Washer		
24	2# Planet Carrier		
25	2# Planet Gear		
26	Rear Gear Case		
27	Pan Hd. Tapping Screw ST2.9×13		