

The B.E.S.T. Quarterly Newsletter

we're so glad you're here!

B.E.S.T. ON THE ROAD

Hey there, fellow travelers! Over the past few months, I have been on the road displaying at shows and events in Queensland - from Kennilworth to Fraser Coast to Rockhampton.

It's always a joy reconnecting with my loyal customers and revisiting the familiar faces of club members along the way.

I'll be hitting the road again, heading south this September to October, so keep an eye out for me!

If you spot me on the road with the B.E.S.T. trailer in tow behind my motorhome - Don't be shy, come and say hello! I look forward to seeing you out there!

*All the best,
Colin Hoggood*



[@BESTRVwaterfilters](https://www.facebook.com/BESTRVwaterfilters)



[@best_waterfilters](https://www.instagram.com/best_waterfilters)

Join us on our socials!

Keep up to date with us, we post lots of helpful tips over on our socials!

Table of Contents

B.E.S.T. ON THE ROAD	P. 1
BACK-FLUSHING	P. 3
UPCOMING SHOWS	P. 3
WHEN SHOULD I USE A HARD WATER CONDITIONER?	P. 4
SHOW US YOUR B.E.S.T.	P. 5
B.E.S.T. ON THE SHELF: HARD WATER CONDITIONER	P. 6
CAN RED CORDIAL REMOVE PLASTIC TASTE?	P. 7
B.E.S.T. LIFETIME	P. 8

Click on the article you'd like to read, it will take you straight there!

Filter Facts in a Flash

BACK-FLUSHING

One of the key features of our B.E.S.T. Inlines is the ability to back-flush. Every one of our filters is a mirror image on the inside, this not only allows you to connect it to your hose line from either end, but it also allows for effective back-flushing. This will eliminate dirt / contaminant build-up on the membrane, and keep your filter working for longer! Back-flush as many times as you need to. We prefer to do it every time we pack up ready to travel.

Watch our video to see exactly how to back-flush your B.E.S.T. Inline!



[Click Here!](#)



Upcoming Shows

OUR FINAL SHOWS OF 2024 - COME SEE US!

Melbourne Leisure Fest



3 - 6 October

Sandown
Racecourse



Stand: 102A

Let's Go Brisbane



31 Oct - 3 Nov

Brisbane
Showgrounds



Stand: 2815

FAQ Spotlight

WHEN DO I NEED A HARD WATER CONDITIONER/BORE WATER FILTER?

Slow or low flow through a B.E.S.T. Inline can be due to a number of water quality issues. Most commonly, it is from a slow build-up of fine sediments that can't be back-flushed away; or from a build-up of minerals from taking on super mineralised bore water. Eg. some areas of Queensland use bore water mixed into the town supply.

To try and get the flow going again – if you can do without the filter for a few days – you will need to get the Inline as dry as possible. Blow the water out, then stand it on it's end in a sunny/hot position for 3-5 days (longer time will be required for cold/rainy weather) to drain all the water from the inline and allow the membranes and carbon to totally dry. Once this is dry, follow the commissioning steps (see video link below) to flush the build-up off the membranes.

This drying process can be successful in most situations to get your inline flowing again (depending on the cause).



Click on the link below to see our YouTube tutorial on commissioning your filter. A set of written instructions were also included in the filter packaging. If you would prefer to view the written instructions online, click [here](#).

[CLICK HERE TO WATCH](#)

B.E.S.T. On The Shelf

PRODUCT SPOTLIGHT

When you're travelling your RV encounters all sorts of water supplies - salty water, water with high mineral content, bore water, harsh town water.

And poor quality water going through your RV causes wear and tear on your parts and your water using appliances.

B.E.S.T. uses and recommends the Delta Water Conditioners - to:

- Keep your water filter cleaner
- Eliminate calcium stains in your showers, sinks and toilets
- Prevent calcium build-up in shower heads and taps
- Protect hot water systems and anodes
- Protect your water using appliances such as kettles, dishwashers and washing machines from build-up, corrosion and blockages
- Improve the palatability of your water
- Improve the performance of soaps, detergents and cleaning chemicals
- Compact, light, easy to store in your RV storage compartment, simple to install

No power, cleaning or replacement parts required!

➤➤➤ **HARD WATER CONDITIONER**



[**PURCHASE HERE!**](#)

BEFORE & AFTER

Hot water system anode on the left in the image below is from a caravan using the DELTA RV for 12 months, compared to the anode on the right from a caravan with no DELTA treatment.



How do you use your B.E.S.T.?

We love seeing how our customers set up B.E.S.T. Inline! Tag us on Instagram or Facebook, and use **#showusthebest** so we can see your setup!



B.E.S.T. On The Shelf

OUR PRODUCTS

Did you know we have multiple styles of the B.E.S.T.? The main body is the same across all models, it's only the fittings that change.

Our filters come with a standard 3/4" BSP female threads, which means that you can swap over to a brass, plastic or reducer bush when needed. All you need to do is head to your local hardware store!

And you don't even have to worry about getting thread tape or paste* because every filter comes with food-grade, blue washers ready to go.



>>> THE BARE (322B)

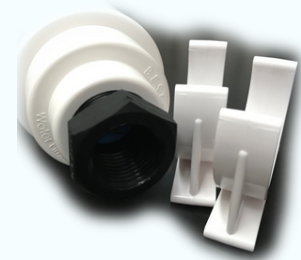
The base model – perfect for if you already have ends from a previous filter or another project.

THE BRASS <<< (322HB)

The brass model is chosen for durability– for those whose filters get knocked around a bit more if they're attached to the hose outside.



Our fittings are made with lead-free brass right here in QLD!



>>> THE T (322T)

This model is used for a more permanent, under-the-sink setup. It comes with a pair of 1/2" reducer bushes and a set of mounting clips, making installation easy as.



>>> THE PLASTIC (322H)

Our standard, and most popular model. This filter comes with sturdy plastic ends, which are perfect for everyday use.

Using Red Cordial In Your Tanks!

EXERPT FROM THE BLOG

Years ago, we were caught out and had to use a garden hose to fill our tanks. That plastic taste that is released from the garden hose stayed with us for several weeks.

Rule #1 - ALWAYS! use a food grade drinking water hose - NEVER a garden hose. Unfortunately, I have seen some RV manufacturing factories using a garden hose (and in one case even from a fire hose) to test the plumbing system of the newly built rig. This will taint the tanks, pumps and plumbing and it is very hard to get rid of - Until now.

A customer came up to my stand at the Perth Caravan Show about 12 years ago and told me that he had been in the industry for years, and that there was only one thing that will get rid of the plastic taste out of water tanks and pipes - and that is the cheapest 'no brand' (Black & Gold / No Frills) RED cordial!

I thought he was joking, but he was serious.



A short time later, we hired a camper trailer. It had the worst water taint I have ever tasted, so I thought I'd try this red cordial method.

I completely drained the tank and poured the 2L red cordial in using a funnel, and then filled the tanks up completely. (Be careful when putting the red cordial in - if it spills, make sure you wipe it off straight away, as it may stain light coloured surfaces.) I then pumped water through the outlet/s until it was coming out red from the tap.

I did leave it sit overnight, however I don't know whether I needed to leave it that long or not. The next day, I drained the system and flushed it out with fresh water.

After re-filling, my kids drank the water - and they have been brought up only filtered water only!

So, for a few dollars, it's worth a go!

Lifetime of the B.E.S.T.

HOW DO I KNOW WHEN IT'S TIME TO REPLACE MY INLINE?

The life of the filter is dependent upon how much water you are using and the quality of the water. With our SilverSafe® included in every B.E.S.T. Inline to keep the bacteria under control, there is no time limit on replacement – it will come down to the life of the carbon. The carbon has a minimum life of 5,000 litres, so if you will be taking on water that is a combination of town water and sources with little to no chlorine levels (like tank water, etc) the lifetime of your B.E.S.T. will be much longer than if are using solely highly chlorinated town water sources.

Taste is what will generally indicate that it is nearing the end of it's life. When you start to get hints of chlorine coming through, then it is getting close to replacement time. (When you get to a town water supply where you can smell the chlorine in the tap water – taste the filtered water first, then taste a little tap water, and there should be a marked difference.)

To give you a guide – when we were travelling full time in our motorhome, we had our two children, a washing machine (used every 2-3 days), shower & toilet and were not light on our water usage – we used to get around a year out of each Inline. We were mainly up and down the coast and in the capital cities where the chlorine levels are higher.

thanks for reading!

Contact Us

Have any questions about the B.E.S.T.?

Phone: 1800 240 822

Email: info@bestwaterfilters.com.au

www.bestwaterfilters.com.au

[CONTACT](#)



Written by
**Colin
Hopgood**

Proud founder and
director of B.E.S.T.
Water Filters since
2001.