



Use & Care Guide

LED Floor Lamp With Projection



Tuya Smart APP



works with amazon alexa

works with Google Assistant



Model No.:SN0TY01

SPECIFICATIONS

Input voltage	AC100-240V
Input power	24W
Output voltage	24V DC
Working temp.	14°F - 113°F
CRI	CRI >80
Control mode	Button / Wi-Fi control / Bluetooth

LIGHTING MODES



CCT Adjustable

Cool White (6000K)-Natural White (4500K)-Warm White (2700K)



RGB Tunable

Red-Orange-Yellow-Green-Cyan-Blue-Purple



Stepless Dimming

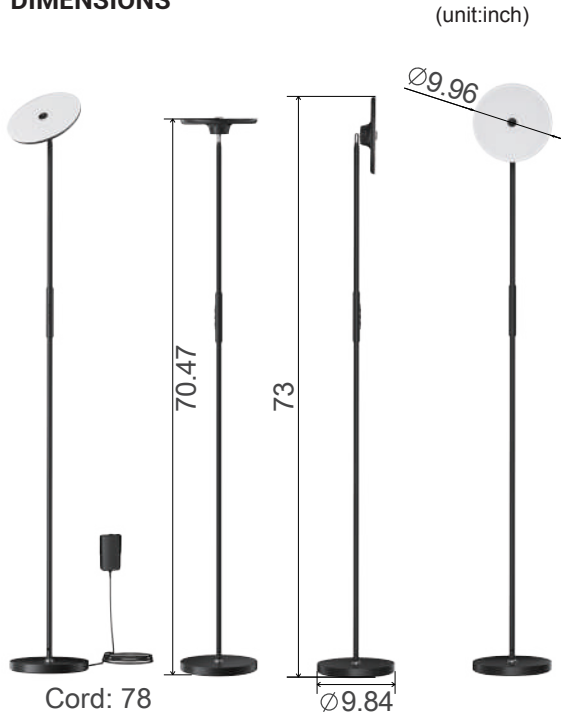
1%-100% Brightness



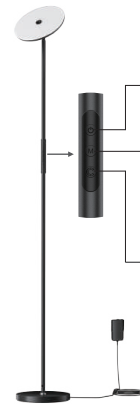
Projection Modes

Replaceable Pattern

DIMENSIONS



BUTTON CONTROL



Button 1

Turn ON/OFF

Button 2

Short press: Static colors changing: red-orange -yellow-green-cyan-blue-purple (cycling)
Long press: Brightness changing 1-100%

Button 3

Short press: Projection and CCT changing: Projection-6000K-4500K-2700K (cycling)
Long press: Brightness changing 1-100% (No applicable to projection mode)

LAMP BODY KIT



Lamp body * 1PC



Base * 1PC

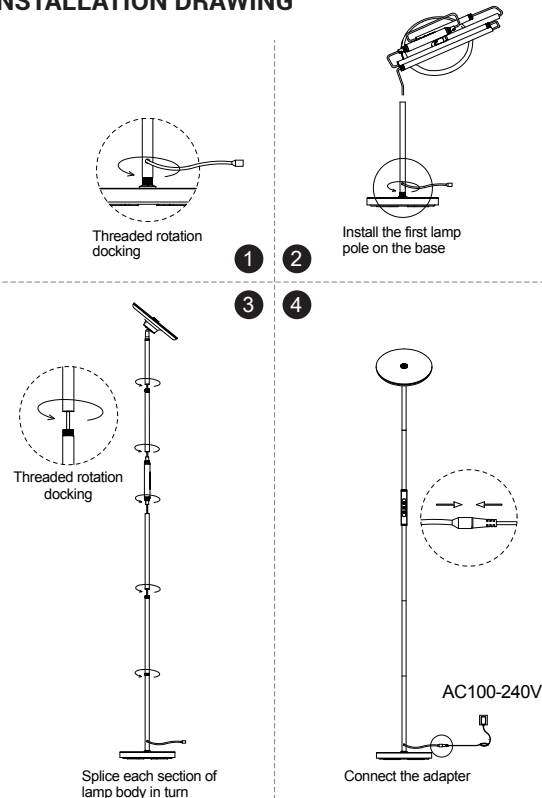


Adapter * 1PC

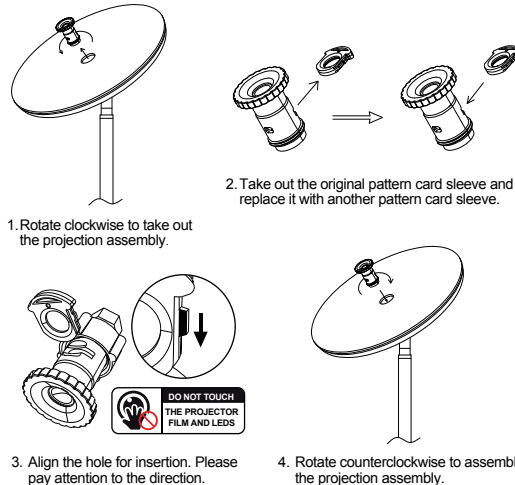


Projection film * 7PCS

INSTALLATION DRAWING



REPLACEMENT FILM STEPS



PROJECTION FILTER NOTICE

White Glass Film: 1 PC

• White projection filter with high quality glass film and electroplating pictures, long life time, can lighting more than 10000 hours, used for night light or daily decoration.

Black PET Film: 6 PCS

• Black projection filter with PET film, colorful design, supposed to light two hours each time, it can use 15-20 times, used for party decoration.

Do not place projector film without any protection. Projector films need to be stored in a separate ziplock bag.

The projection performs best within 6.6 ft (2 meters) from the wall or ceiling.

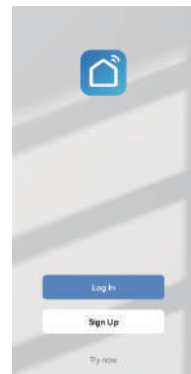
HOW TO CONNECT APP?

The steps of WiFi&Bit network configuration for smart floodlight are as follows:

1. Download the Tuya Smart App or Smart Life App from APP Store in Apple iPhone / APP market in Android mobile phone. Take the iPhone as an example, the following figure shows the app icon and the QR code for downloading the app.

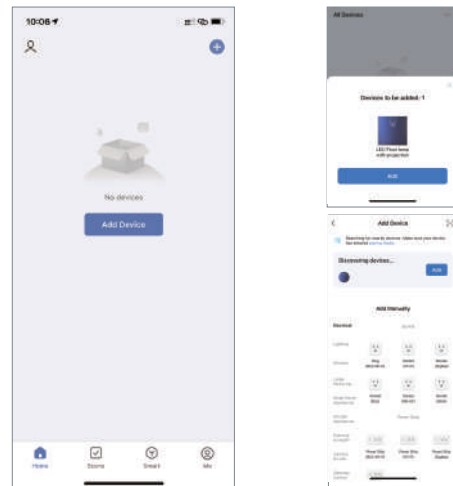


2. Register and log in



3. Ensure that the phone is connected to 2.4GHz Wi-Fi network, and enable 4GHz mobile data, Bluetooth and GPS. When the device needs to connect to the app, long press the control button for 5 seconds. When the white light flashes, the user can open the app to access the network. If the device fails to access the network for 3 minutes, the device automatically enters the steady-on mode. If the device needs to access the network again, long press the control button for 5 seconds. When white light flashes, the network can be configured.

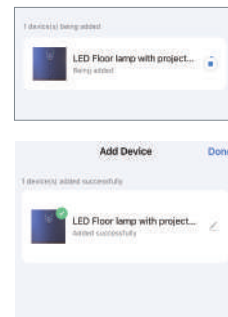
4. Automatically search for devices (recommended first). The APP home page interface will automatically pop up (Find the devices to be added). Click Add or click + icon on the upper right corner of the APP home page, to choose Add Device and enter the Add interface for selecting the device to be added.



5. Select a network and click Next.



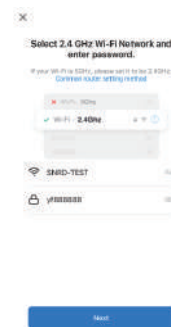
6. The device is now in the linking state. It means added successfully when appear "v" and the red light stops breathing.



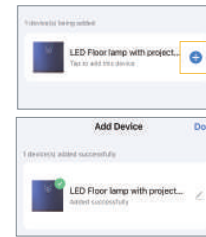
7. Manually add a device. The device must be in the connected state. Click Add in the upper right corner of the home page to select Add Device. On the Add Device page, choose Lighting-Light Source (BLE+Wi-Fi).



10. Select 2.4 GHz Wi-Fi network and enter the password, and then click Next.



11. Continue to select Add. The indicator stops flashing when the device is added successfully. APP supports 2.4GHz Wi-Fi network/4G data network/Bluetooth wireless control. When using Bluetooth control, the router needs to be disconnected for about 3 minutes to connect.



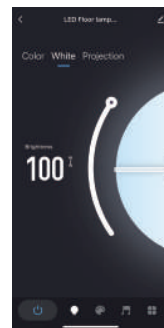
8. Continue to configure the network and confirm that the light flashes quickly or breathes.



9. Select the blinking or breathing rapidly according to the blinking status of the light.



White and warm light interface.



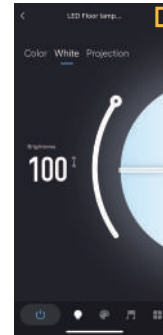
Colors interface.



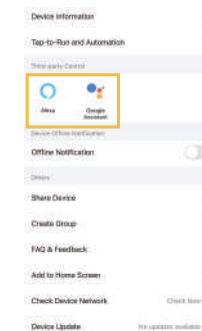
Projection interface.



Check the third-party voice devices supported by the device by clicking the writing icon in the upper right corner.



The device supports Alexa and Google Assistant.



NOTICE

- The product is only suitable for indoor use, avoid long time work in a humid environment.
- Do not soak the product in water or other liquids.
- Do not install the product in a high-temperature environment.
- When installing, the screws need to be locked firmly and not loose.
- The adapter needs to be connected in place, and there must be no looseness or poor contact.
- Do not disassemble and install the lamp and battery without permission.

AFTER-SALES SERVICE

Excellent after-sale service will always be with you, should you have any problems or suggestions associated with this product please kindly contact us and we will try the very best to resolve them within 24 hours.



dreamcolorsupport@yeah.net

EC	REP
----	-----

eVatmaster Consulting GmbH
Bettinastr. 30
60325 Frankfurt am Main, Germany
contact@evatmaster.com

UK	REP
----	-----

EVATOST CONSULTING LTD
Suite 11, First Floor, Moy Road Business Centre,
Taffs Well, Cardiff, Wales, CF15 7QR
contact@evatmaster.com
+442921680945