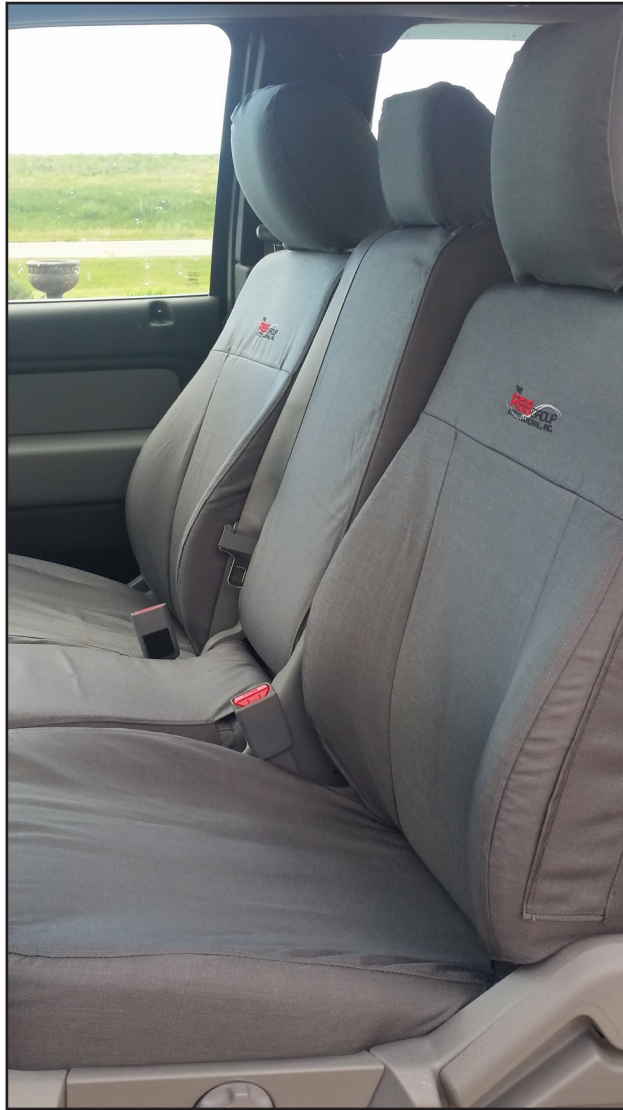


# INSTALLATION GUIDE



## **T52206 Tactical Driver's Bucket**

FORD F150 (2015-2019) Does Not Fit XL Trim  
FORD Super Duty (2017-2019) Does Not Fix XL Trim  
FORD Expedition (2018)



# BILL OF MATERIALS

ITEM	QUANTITY
Driver Seat Back Cover	1
Driver Seat Bottom Cover	1
Headrest Cover	1

Seat Backs & Bottoms have tag signifying Driver or Passenger.

**Ensure airbag patch (same side as the TigerTough tag) goes on the outside edge of the seat.**

Watch the install video here:  
[www.ttcovers.com/T52206video](http://www.ttcovers.com/T52206video)

## General care instructions:

1. In most cases dirt, debris, spills and pet hair can be removed by wiping with a damp cloth.
2. Seat covers can be removed and machine washed on low temperature setting using mild detergent.  
Drip dry or machine tumble dry on a no heat cycle.  
Straps should be coiled and secured with rubber bands for machine washing and drying.
3. Soil may be removed with spray cleaner or detergent and water.
4. Oil or grease stains should first be treated with a dry cleaning solvent followed by a spray cleaner or detergent and water.
5. Do not use bleach.

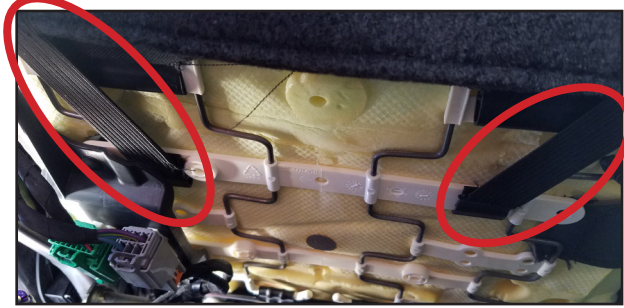
# 1 - Preparation



- 1.1 - Slide seat forward and raise to highest position, if possible.
- 1.2 - Remove headrest by pressing in tabs at base of headrest and pulling up



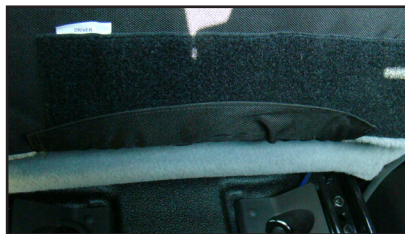
## 2 - Install Seat Bottom Cover



- ❑ 2.1 - Remove yellow plug from underneath seat bottom, allowing wires to move freely.
- ❑ 2.2 - Unhook elastic straps holding rear flap to seat bottom.
- ❑ 2.3 - Put cover over seat bottom.
- ❑ 2.4 - Tuck outside of cover behind plastic trim. Tuck inside of cover between seat bottom and center console.
- ❑ 2.5 - Tuck outside string between seat bottom and trim, where the back and bottom meet. Inside string goes down and under seat. Strings must run in front of rear seat mounts.
- ❑ 2.6 - Pull strings tight.
- ❑ 2.7 - Tie a loop in one string. Run the other string through the loop, pull tight, and tie string back on itself. It is important to pull tight as this is what keeps your cover from shifting.
- ❑ 2.8 - Push top flap between seat back and seat bottom. Slits in cover line up with wires in seat back.
- ❑ 2.9 - Run front flap over seat adjustment levers, wires, and brackets.
- ❑ 2.10 - Pull front flap tight and fasten to Velcro on top flap.

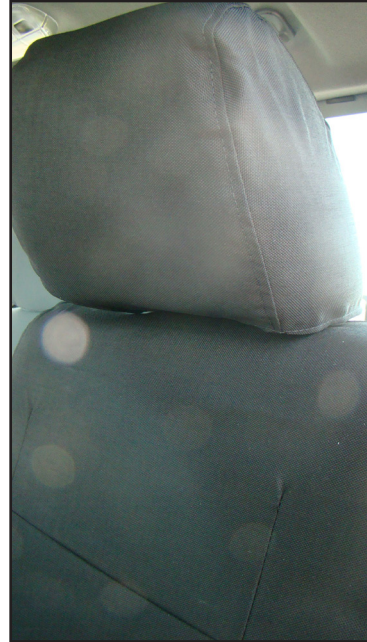
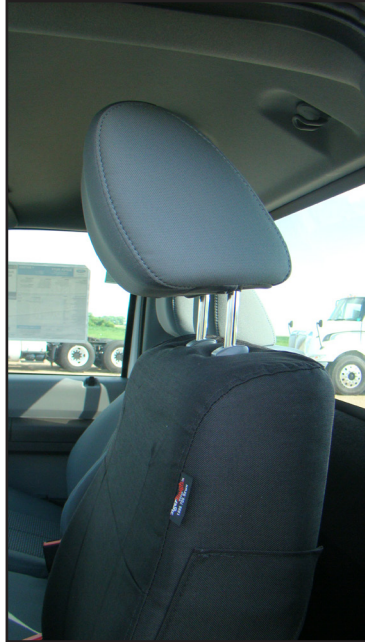


## 3 - Install Seat Back Cover



- 3.1 - Turn seat back cover 3/4 of the way inside out and pull over seat back.
- 3.2 - Line holes in cover up with headrest holes and work holes around plastic trim.
- 3.3 - Continue pulling the cover down over the seat, unrolling it as you go.
- 3.4 - Push front flap between seat back and seat bottom.
- 3.5 - Pull front flap tight and fasten to Velcro on seat back.
- 3.6 - Long flap on rear of seat back fastens to Velcro on underside of seat bottom cover.

## 4 - Install Headrest Cover



- 4.1 - Put headrest back in seat by pressing plastic tabs and pushing down on headrest.
- 4.2 - Pull cover over head rest with “loop” Velcro in front and “hook” Velcro in rear.
- 4.3 - Fasten Velcro tabs together under headrest.

**Congratulations!**  
**You have successfully installed your TigerTough Seat Cover.**

**We're as impressed as you are! Tweet us a picture of your new covers @TigerToughGroup  
(We like seeing pictures of your cruiser too)**