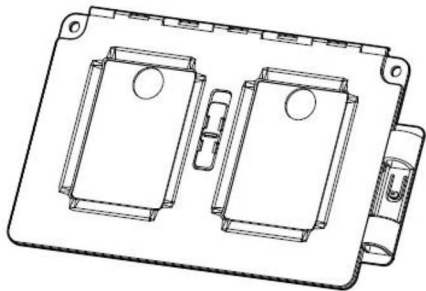
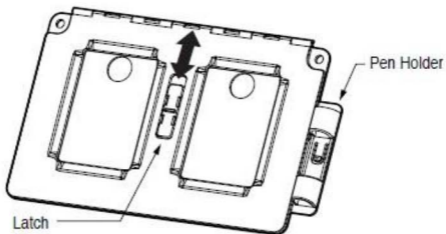
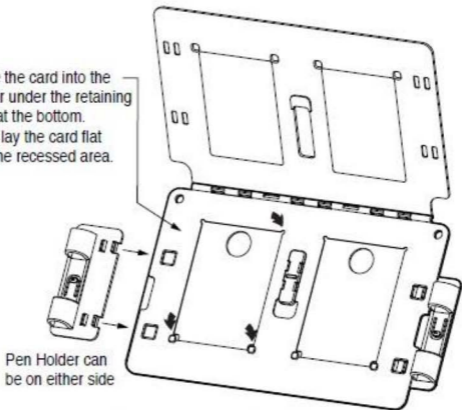


# Trading Card Autograph Holder User Guide

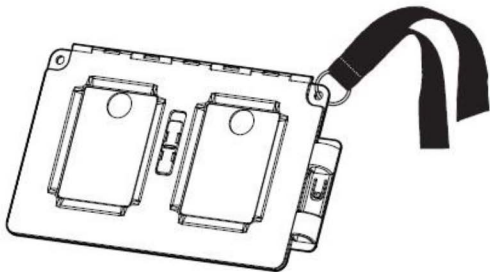
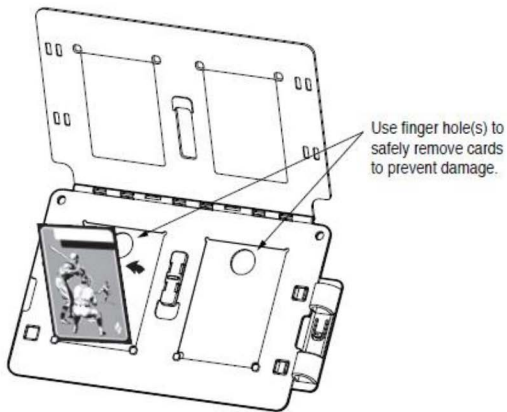




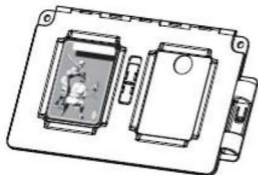
Place the card into the holder under the retaining tabs at the bottom. Then lay the card flat into the recessed area.



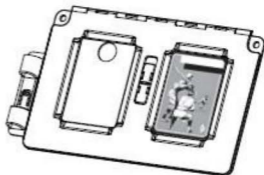
Card can be placed on either side or 2 cards can be placed side-by-side.



Attach a lanyard in case you need to lower the card holder over a barrier (e.g., fence, wall, dugout).



**Right Handed Autographer**



**Left Handed Autographer**

*Note: Assuming the Autographer is right handed, place the card on the left side of the holder, left handed, place the card on the right side of the holder. When using the pen holder, place on opposite side of where the card is inserted.*

*Note: Holder only accommodates standard trading cards, it does not support thicker cards.*



Follow us on Facebook

For questions or bulk sales, contact us at:  
support@rsrautographs.com  
(800) 319-6964