

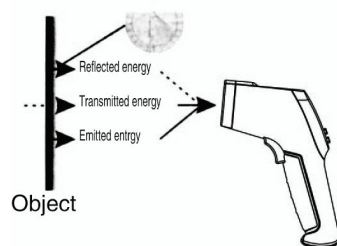


Infrared Laser Thermometer Model: LT-04 Instruction manual



Introduction

Compact, rugged and easy to use. Just aim and push the button, read current surface temperatures in less than a second. It measures surface temperatures of hot, hazardous or hard-to-reach objects without contact.



How it works

Infrared thermometer measures the surface temperature of an object. The unit's optics sense emitted, reflected, and transmitted energy which is collected and focused onto a detector. The unit's electronics translate the information into a temperature reading which is displayed on the unit. For increased ease and accuracy the laser pointer makes aiming even more precise.

Cautions

Infrared thermometer should be protected for the following:
 --EMF (electro-magnetic fields) from arc welders, induction heaters.
 --Thermal shock (cause by large or abrupt ambient temperature changes allow 30 minutes for unit to stabilize before use).
 --Do not leave the unit on or near objects of high temperature.

Maintenance

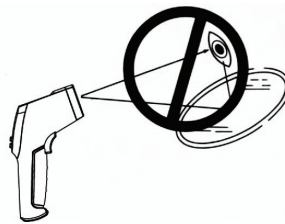
- 1) Lens cleaning: Blow off loose particles using clean compressed air. Gently brush the remaining debris away with a moist cotton cloth.
- 2) Case cleaning: Clean the case with a damp sponge/cloth and mild soap

Note:

- 1) Do not use solvent to clean lens.
- 2) Do not submerge the unit in water.

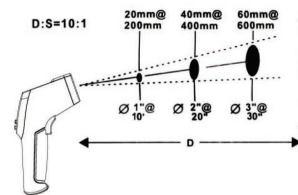
Specifications	
Temperature range	-44° to 1022°F (-42° to 550°C)
Accuracy	-44° to 32°F (-42° to 0°C), +/-5°F(+/-3 C); 32° to 212°F (0° to 100°C), +/-3.5°F(+/-2 C); Higher than 212°F(100 C), +/-2%.
Repeatability	1% of reading or 1°C
Response time	500 mSec, 95% response
Spectral response	5-14 um
Emissivity	Pre-set 0.95
Ambient operating range	0 to 50°C (32 to 120 °F)
Relative humidity	10-95% RH noncondensing, @ upto 30°C(86°F)
Storage temperature	-20 to 60°C (-4 to 140°F) without battery
Weight/Dimensions	138g; 152*130*38mm
Power	9v Alkaline or NiCd battery
Battery life (Alkaline)	Laser Models: 16 hrs
Distance to Spot Size	10:1

Warning



Do not point laser directly at eye or indirectly off reflective surfaces.

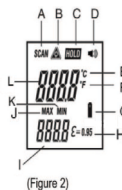
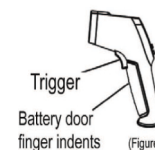
1. When taking measurement, point thermometer towards the object to be measured and hold on to the trigger. The object under test should be larger than the spot size calculated by the field of view diagram.
2. Distance & spot size: As the distance from the object increases, the spot size of measuring area becomes larger.



3. Field of view: Make sure the target is larger than the unit's spot size. The smaller the target the closer measure distance. When accuracy is critical, make sure the target is at least twice as large as the spot size.
4. Emissivity: Most organic materials and painted or

oxidized surfaces have an emissivity of 0.95 (pre-set in the unit). Inaccurate readings will result from measuring shiny or polished metal surfaces. To compensate, cover the surface to be measured with masking tape or flat black paint. Measure the tape or painted surface when the tape or painted reach the same temperature as the material underneath

Quick start instruction



1. Press battery door clip, install battery correctly. Pull the trigger LCD display reading & battery icon, Release the trigger.

LCD display A Scanning icon

B Laser on icon

C Hold

D Alarm

E °C unit

F °F unit

G Battery power icon

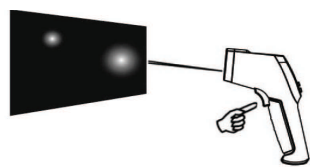
H Emissivity

I Max/min display

J Max

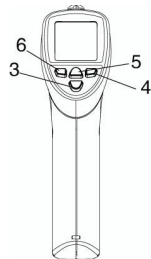
K Min

L Actual measurement reading

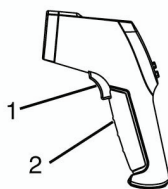


(Figure 3)

2. Locating a hot spot: To find a hot spot aim the thermometer outside the area of interest, then scan across with up and down motions until you locate the hot spot. (please turn on the laser for accurate measuring)



(Figure 4)



(Figure 5)

3. Diagram description

- (1) Trigger: When pulling the trigger LCD display reading with SCAN icon. Release the trigger, display reading with HOLD icon
- (2) Battery door: when replace battery door please using the finger indents to pull open the battery door
- (3) max/min switch
- (4) Laser on/off button
- (5) Celsius/Fahrenheit switch button
- (6) Backlight Switch

WARRANTY

Maverick Industries Inc. warrants this product to be free of defects in parts, materials and workmanship for a period of 90 days, from date of purchase. Should any repairs or servicing under this warranty be required, contact Maverick Customer Service by mail or phone for instructions on how to pack and ship the product to Maverick's National Service Center located as follows:

Maverick Customer Service
94 Mayfield Ave.
Edison NJ 08837

Telephone: (732) 417-9666

Hours: Weekdays 8:30 AM- 4:30 PM

Do not send any parts or product to Maverick without calling and obtaining a Return Authorization Number and instructions.

This warranty is VOID if instructions for use are not followed; for accidental damage; for commercial use; for damage incurred while in transit; or if the product has been tampered with.

This warranty gives you specific legal rights and you may also have other rights which vary from state to state.

www.maverickhousewares.com