

Card
Printer

3
YEARS
WARRANTY



DC-2300

Entrance to
professional card printing



HIGHLIGHTS AT A GLANCE:

- High resolution printing with 300 x 1200 dpi
- Fast print speed for up to 900 cards/hour in monochrome and up to 180 cards/hour in colour
- Edge-to-Edge printing
- Easy to use
- Compact design with small footprint

DASCOM[®]
SOLUTIONS FOR BUSINESS PRINTING

DC-2300

The DASCOCM DC-2300 is a direct thermal card printer especially designed for front-desk applications. With a compact design this printer doesn't use much space on your desk but delivers fast and crisp results. With a resolution of up to 300 x 1.200 dpi fine details are visible and with a print speed of up to 180 cards/hour in colour even large print jobs can be done in a short time.

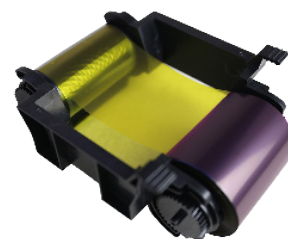
Thanks to Edge-to-Edge printing, the DC-2300 is the perfect partner for employee ID, membership or loyalty cards. Easy exchangeable ribbons and an OLED display on the front informing about the actual status makes the daily work simple.

TECHNICAL DATA

Print Method	Direct thermal technology
Resolution	up to 300 x 1200 dpi
Print Capability	Single Side, Double Side (Factory build), Edge-to-Edge
Print Speed	Single Side: 180 cards/hour (YMCKO) or 900 cards/hour (Monochrome K) Double Side: 135 cards/hour
Interfaces	USB (2.0), Ethernet (10/100)
Card Thickness	0,25 - 1,1 mm (10 - 50 mil)
Security Features	RFID ribbon, custom watermarks (BMP)
Card Loading	Auto card feeder for 100 cards (0,76 mm thickness) Manual feed: single card
Card Output	75 cards (rear side), 25 cards (front side)
Card Types	PVC, PET, PET-G, ABS, Teslin® 85,6 x 53,98 mm (ISO ID-1/CR-80 size)
Consumables	Ribbon YMCKO (500 Images), Ribbon YMCKOO (400 Images), Ribbon YMCKOK (400 Images), Ribbon ½YMC KO (600 Images), Ribbon K (1.600 Images)
Cleaning Set	Cleaning Card Cleaning Roller
Physical Weight	6,2 kg
Physical Size	Single Side: 199 x 352 x 209 mm (W x D x H) Double Side: 199 x 400 x 220 mm (W x D x H)
Noise	52 dB(A) while printing 35 dB(A) in standby
Power Voltage	Auto wide ranging, 100 - 240 V AC - 50/60 Hz
Environment	Printing: +15° to +35° C Temperature; 35 - 65% Humidity Storage: -5° C to +70° C Temperature; 20 - 70% Humidity
Driver	Windows 8/8.1/10/11 and Server 2012/2016/2019/2022
Warranty	For more details please contact your local dealer



A variety of interfaces for perfect integration into different environments



Different ribbon cassettes for specific demands make the handling easy

DASCOCM GB Ltd

Hart House, Priestley Road
Basingstoke | Hampshire RG24 9PU | ENGLAND
Tel.: +44 1256 355 130 | Fax: +44 1256 481 400
info.gb@dascom-com | www.dascom.co.uk

DASCOCM Europe GmbH

Huweg 3 | 89079 Ulm | GERMANY
Tel.: +49 731 2075-0 | Fax: +49 731 2075-100
info@dascom.com | www.dascomeurope.de

DASCOCM (Holdings) LTD.

R. 1811-1816A | Nan Fung Centre
264-298 Castle Peak Road | Tuen Wan, N. T. | Hong Kong
Tel.: +852 2498 1507 | Fax: +852 2413 6047