

# VORSTER + BRAYE

CATALOGUE 2024





## THE STUDIO

About Us ..... 3

### TABLEWARE

Carve Range .....	5
Contour Range .....	6
Debut Cup & Penguin Jug ..	7
Chefs Range .....	8
Bowls & Platters .....	9
Dry Goods Jar & Lid .....	10

### DECORATIVE

Restio Vase .....	12
Gem Vessel .....	13
Giorgio Bottle .....	14
Flake-Rim Vase .....	15
Flake-Rim Bowl .....	16
Roots Vase .....	17

### PLANTERS

Small U-planter .....	19
Large U-planter .....	20

### ENQUIRES

Contact Details .....	21
-----------------------	----



# ABOUT US

Vorster & Braye Ceramic Design was started in 2013 by former electro-mechanical engineer Colin Braye and former chartered accountant Martin Vorster. Both were looking for a more creative outlet, and so a hobby became a business.



COLIN AT THE WHEEL

Our ceramics embody both functionality and aesthetic appeal with their minimalist simplicity. Our dedicated team employs various techniques such as hand-throwing, slip-casting, and jiggering to meticulously craft each piece. Using a variety of clays and glazes, our collection combines the genuine essence of handmade objects with the careful consistency of refined and precise forms.

Whether it's planters or plates, our ceramics exude a simple elegance that surpasses fleeting trends. We refuse to accept the soullessness of mass-produced items, so we continuously explore the limits of our techniques and materials, resulting in a range of impeccably clean and sculptural forms that are unmistakably hand-crafted.

VORSTER  
+ BRAYE

# TABLEWARE

CATALOGUE 2024



VORSTER  
+ BRAYE



# CARVE RANGE

DESIGN	DIMENSIONS	PRICE
Carve Bowl / Low	Ø17.5 x H5cm	R290
Carve Bowl / Large	Ø22 x H8.5cm	R390
Carve Platter	Ø44 x H3cm	R1550



DESIGN	DIMENSIONS	PRICE
Carve Main Plate	Ø27 x H1.5cm	R355
Carve Side Plate	Ø19 x H1cm	R270

DESIGN	VOLUME	DIMENSIONS	PRICE
Carve Cup	180ml	Ø7 x H9cm	R215

## AVAILABLE FINISHES



IVORY



TAUPE



COCOA



# CONTOUR RANGE

DESIGN	VOLUME	DIMENSIONS	PRICE
--------	--------	------------	-------

Contour Cup / Small	150ml	Ø8 x H6cm	R190
Contour Cup / Medium	250ml	Ø8.5 x H7cm	R215
Contour Jug	450ml	Ø10 x H14.5cm	R330



CONTOUR CUP  
SMALL



CONTOUR CUP  
MEDIUM



CONTOUR JUG

## AVAILABLE FINISHES



IVORY



KHAKI



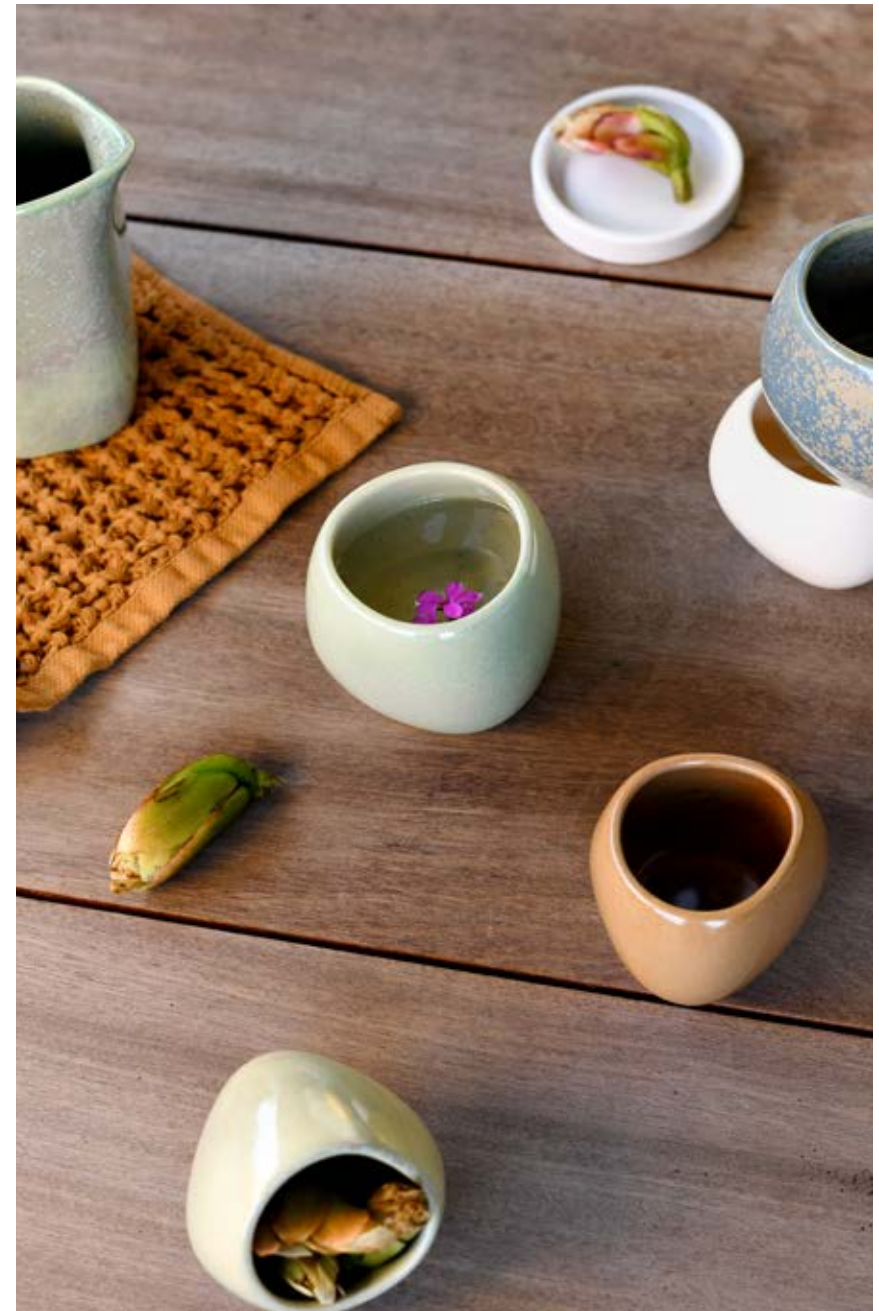
LICHEN



GLACIER



SCORCH



# DEBUT CUP & PENGUIN JUG



DESIGN	SIZE	DIMENSIONS	PRICE
<b>Debut Espresso Cup</b>	125ml	Ø9.5 x H5 cm	R255
<b>Debut Cup</b>	250ml	Ø10.5 x H8cm	R295
<b>Debut Mug</b>	450ml	Ø12 x H10.5cm	R320
<b>Penguin Jug / Small</b>	100ml	Ø6 x H8cm	R245
<b>Penguin Jug / Medium</b>	200ml	Ø7 x H9.5cm	R270
<b>Penguin Jug / Large</b>	400ml	Ø9 x H11cm	R330



DEBUT  
ESPRESSO  
CUP



DEBUT CUP



DEBUT MUG



PENGUIN JUGS

## AVAILABLE FINISHES



IVORY



KHAKI



MATT  
BLACK

# CHEFS RANGE

DESIGN	DIMENSIONS	PRICE
Extra Small	15 x 2.5cm	R230
Small	19 x 2.5cm	R270
Medium	25 x 2.5cm	R330
Large	29 x 2.5cm	R375



CHEFS PLATE  
EXTRA SMALL



CHEFS PLATE  
SMALL



CHEFS PLATE  
MEDIUM



CHEFS PLATE  
LARGE

## AVAILABLE FINISHES



TERRACOTTA  
& IVORY



CHOCOLATE  
& IVORY



CHOCOLATE  
& CLEAR



BONE &  
CLEAR







# BOWLS & PLATTERS

DESIGN	DIMENSIONS	PRICE
<b>Mini Miso Bowl</b>	Ø10 x H6cm	R255
<b>Miso bowl</b>	Ø14 x H6.5cm	R290
<b>Noodle Bowl</b>	Ø20 x H7cm	R350
<b>Harmon Bowl</b>	Ø34 x H7cm	R575
<b>Makers Platter</b>	Ø44 x H3cm	R1200



MINI MISO BOWL



MISO BOWL



NOODLE BOWL



HARMON BOWL



MAKERS PLATTER

## AVAILABLE FINISH



**TERRACOTTA & IVORY**

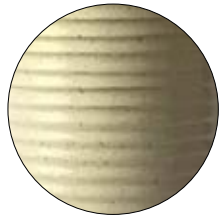
# DRY GOODS JAR & LID

SIZE	DIMENSIONS*	PRICE
------	-------------	-------

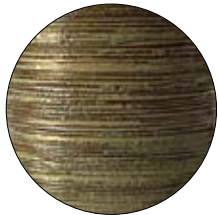
<b>Low</b>	Ø15 x H6cm	R515
<b>Small</b>	Ø11.5 x H13.5cm	R515
<b>Medium</b>	Ø11.5 x H18cm	R555
<b>Large</b>	Ø11.5 x H21.5cm	R640

\* Height includes the lid.

## AVAILABLE GLAZES



**IVORY**



**OATMEAL**



**AMBER**



**SEA GREEN**



## AVAILABLE TEXTURES



**BRUSHED**



**SCALLOPED**



**LOW  
DRY GOODS**



**SMALL  
DRY GOODS**



**MEDIUM  
DRY GOODS**



**LARGE  
DRY GOODS**

VORSTER  
+ BRAYE

**DECORATIVE**  
CATALOGUE 2024



# RESTIO VASE

DESIGN	DIMENSIONS	PRICE
--------	------------	-------

<b>Restio Low</b>	Ø27 x H11cm	R1630
<b>Restio Standard</b>	Ø18 x H26cm	R1630
<b>Restio Tall</b>	Ø13 x H35cm	R1630



RESTIO LOW



RESTIO STANDARD



RESTIO TALL

## AVAILABLE FINISHES



**BONE**



**BARK**



**BURNED**





# GEM VESSEL

DESIGN	DIMENSIONS	PRICE
Gem Vessel / Small	L12.5 x W10.5 x H7cm	R330
Gem Vessel / Medium	L19 x W15 x H10cm	R460



SMALL GEM VESSEL



MEDIUM GEM VESSEL

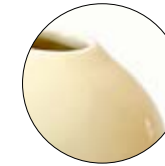
## AVAILABLE FINISHES



JADE



AQUAMARINE



ALABASTER



KHAKI



TIGERS EYE



# GIORGIO BOTTLE

SIZE	DIMENSIONS	PRICE
Small	Ø8.5 x H19cm	R450
Large	Ø8.5 x H26.5cm	R515

## AVAILABLE FINISHES

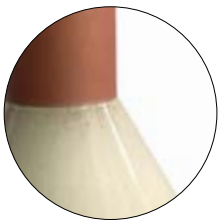


GIORGIO BOTTLE  
LARGE & SMALL

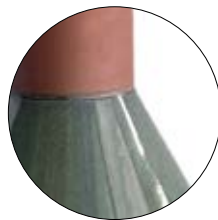
# FLAKE-RIM VASE

DESIGN	DIMENSIONS	PRICE
Z1	Ø16 x H28cm	R945
Z2	Ø15.5 x H25cm	R945
Z3	Ø15 x H19cm	R870
Z4	Ø18.5 x H10cm	R680
Z5	Ø12.5 x H13.5cm	R630
Z6	Ø10.5 x H14.5cm	R730
Z7	Ø12.5 x H22.5cm	R680
Z8	Ø13 x H22cm	R810
Z9	Ø18.5 x H10cm	R700

## AVAILABLE FINISHES



**TERRACOTTA  
& IVORY**



**TERRACOTTA  
& SEA GREEN**



Z1

Z2

Z3



Z4

Z5

Z6



Z7

Z8

Z9



# FLAKE-RIM BOWL

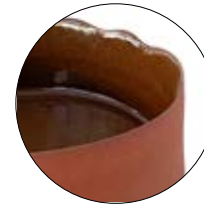


SIZE	DIMENSIONS	PRICE
Small	Ø23 x H7cm	R885
Medium	Ø27x H8.3cm	R1100
Large	Ø33 x H8.3cm	R1500

## AVAILABLE FINISHES



**TERRACOTTA & IVORY**



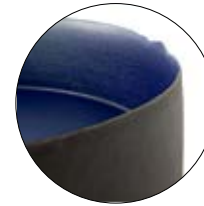
**TERRACOTTA & AMBER**



**TERRACOTTA & SEA GREEN**



**BLACK & IVORY**



**BLACK & MATT COBALT**



**BLACK & BLACK**



# ROOTS VASE



SMALL ROOTS VASE



MEDIUM ROOTS VASE



LARGE ROOTS VASE

## AVAILABLE FINISH



**BLACK**

### DESIGN

- Roots / Small
- Roots / Medium
- Roots / Large

### DIMENSIONS

- L13 x W10 x H11cm
- L13 x W10 x H22cm
- L23 x W19 x H30cm

### PRICE

- R545
- R980
- R1400



# PLANTERS

CATALOGUE 2024

VORSTER  
+ BRAYE



# SMALL U-PLANTERS

SIZE	DIMENSIONS	PRICE
<b>14cm U-planter &amp; Tray</b>	<b>Ø14 x H14cm</b>	<b>R425</b>
14cm U-planter Only	Ø14 x H13cm	R395
Tray Only for 14cm U-Planter	Ø8.5 x H1.5cm	R105
<b>18cm U-planter &amp; Tray</b>	<b>Ø18 x 17cm</b>	<b>R510</b>
18cm U-planter Only	Ø18 x 18cm	R475
Plinth Tray Only for 18cm U-Planter	Ø10 x 2cm	R115

## AVAILABLE FINISHES



TERRACOTTA



SATIN OYSTER



SATIN MINT



SATIN ASH



SATIN BLACK



SATIN VIRIDIAN



SATIN NORDIC



SATIN MIDNIGHT

# LARGE U-PLANTERS

SIZE	PRODUCT	DIMENSIONS*	PRICE
20cm*	U-planter	Ø20 x H20cm	R950
	Plinth Tray for 20cm	Ø12.5 x H2.5cm	R185
26cm*	U-planter	Ø26 x H26cm	R1880
	Plinth Tray for 26cm	Ø14.5 x H2.7cm	R270
35cm*	U-planter	Ø35 x H35cm	R3200
	Plinth Tray for 35cm	Ø20 x H3.5cm	R400
45cm*	U-planter	Ø45 x H45cm	R4800
	Plinth Tray for 45cm	Ø24.5 x H4.5cm	R600

\*Dimensions are outside diameter and height, approximate

## AVAILABLE FINISHES



TERRACOTTA



SATIN OYSTER



SATIN ASH



SATIN BLACK



SATIN VIRIDIAN



SATIN MIDNIGHT



# CONTACT INFORMATION

All our designs are made at the Vorster & Braye studio, which is open to the public, and a selection of work is available for purchase.

The studio is open weekdays 8am to 5pm at:

96 Long Street

Cape Town

South Africa

For all enquiries:

**[info@vorsterandbraye.co.za](mailto:info@vorsterandbraye.co.za)**

[vorsterandbraye.co.za](http://vorsterandbraye.co.za)

[@vorsterandbraye](https://www.instagram.com/vorsterandbraye)

+27 (0)21 422 0617

VORSTER  
+ BRAYE

