



seven

dining



emotional design

emotions

in glass



history

Borosilicate glass blown in Umbria. **Blueside** was born from Steroglass®, a 60-year worldwide leading company in glass blowing and high-tech scientific labware instrumentation. Founded and inspired by Luigi Falocci, the family-run Steroglass® has always seen a continuing favourable trend since scientific knowledge and design have been meticulously mixed resulting in high quality instruments and iconic objects of style.

Blueside boasts the unique skilled hands of Steroglass's craftsmen, able to finely process and blow glass into unparalleled design pieces, creating emotional spaces to live in. It's about love for design, passion for food, drink and music. It's about a strong desire for wellness and all that makes you feel good.



Pure raw material - Borosilicate Glass

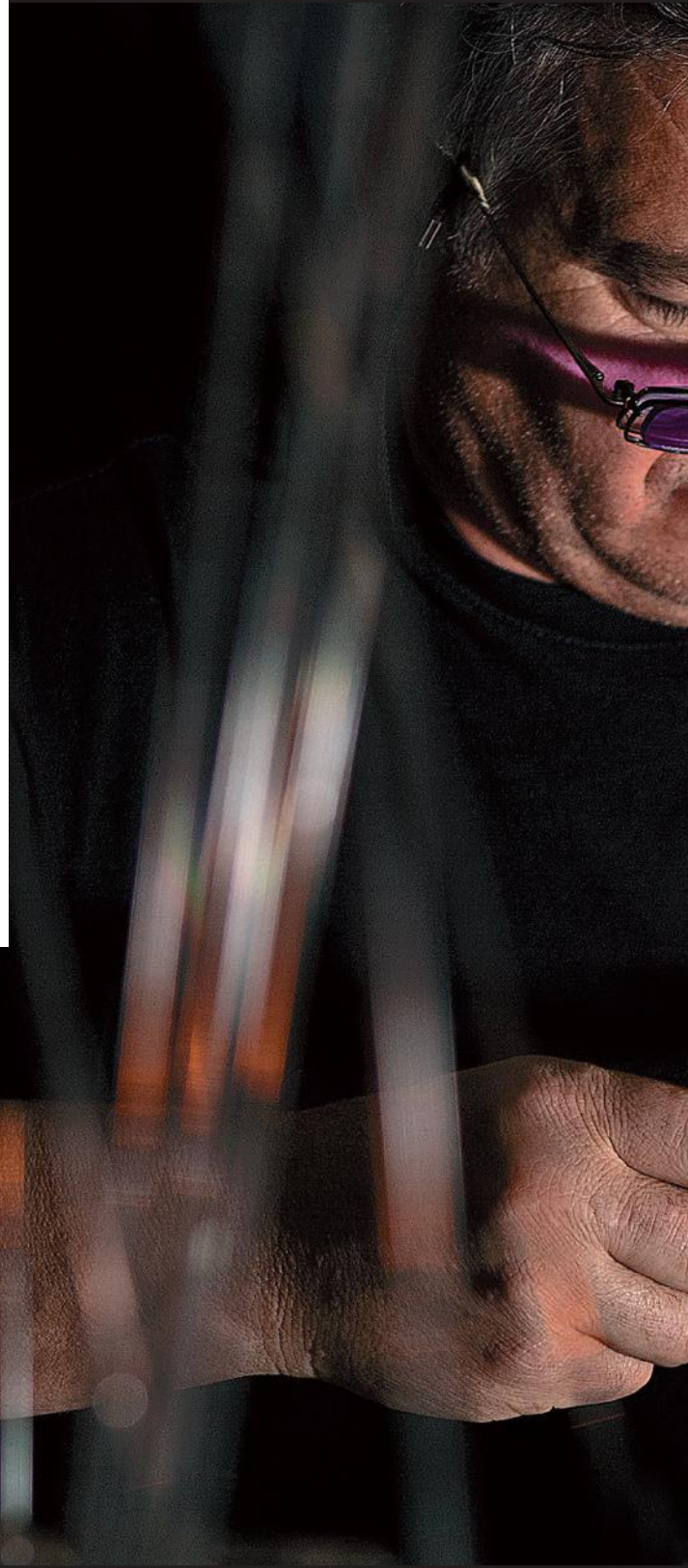
Today, glass blowing is an increasingly rare art that demands fatigue, patience and precision.

Borosilicate glass shaping requires acknowledged expertise. A **Blueside** object is thoroughly hand-made in borosilicate glass - the purest, most neutral, most resistant to thermal shocks, and contaminants-free.

Its uniqueness makes it different from all the others!

Blueside Emotional Design: an experience you were not expecting!

borosilicate glass







Blueside is

preciousness, purity,
transparency, beauty,
harmony, essentiality, style,
emotion, multipurpose,
uniqueness, multisensory,
atmosphere, meditation,
relaxation, passion, slow life,
conviviality, roots...



A collection of precious glass
objects for food and beverages.
Stunning glasses, decanters,
serving dishes, bottles,
cooking pots and many more
intensify flavours and aromas
of your meals.

The essential lines and
transparency of glass enhance
what you are about to relish!

dining





Modigliani *the elevation of wine*

An elegant handmade stemware for red and white wines in borosilicate glass.

The stem, which is about one third longer than usual, makes this a natural pedestal for sipping those delicious nectars that deserve special attention; in addition other innovative details combine the typical roundness of the wine glass with more severe lines, making Modigliani superior stemware.

design *Francesco Paretti*

♪ Sergio Cammariere
L'amore non si piega

dimensions *Modigliani Red* o x h 92x320mm
red wine glass

Modigliani White o x h 81x260mm
white wine glass

material *borosilicate glass*



Chino *stage applause*

It's a unique emotion when you enjoy a great cocktail or a spirit in this extraordinary design glass. Meant to serve the best of the best.

design *Daniele Buschi*

♪ Sidney Bechet
Petite fleur

dimensions *øxh 110x164mm*

material *borosilicate glass*

Botero

colourful cavities

Hand-blown stem glass with a sinuous and soft shape. It comes from a single piece of borosilicate glass tube. Its shape enables to fill both the bowl and the pedestal, creating fabulous and particular chromatic effects. Ideal for red wines but also suitable for sparkling white wine since its concave shape helps develop bubbles running through the entire length of the glass.

design *Francesco Paretti*

🎵 Roberto Gatto quintet
El día que me quiera

dimensions *øxh 100x260mm*

material *borosilicate glass*





Sospiro *the tavern wine glass*

A modern interpretation of the tavern glass, introduced in Rome by Pope Sixtus X in late 19th century; from the same family as Fojetta (typical ½ litre tavern carafe) and Quartino (¼ litre), “Sospiro (1/10 litre) is also known as “whisper” because people were ashamed of not having enough money to drink more.

The Blueside Sospiro is a cute mouth-blown shot glass to serve wine, spirits or simply a good moka coffee in a glass cup!

design *R&D Blueside*

♪ Ivano Fossati
C'è tempo

dimensions *øxh 50x68mm*

material *borosilicate glass*





Mood

bubbles through and through

Belonging to the family of hollow glasses that can be filled right to the base, a symbol of excellence of the Blueside collection, Mood was designed to serve spumante, champagne and prosecco.

The special shape allows both the aroma and taste of the drink to be intensified. The hollow glass stem was studied to best appreciate vintage perlage sparkling wines.

design *Francesco Piretti*

♪ Duke Ellington Billy Strayhorn
Take the a train

dimensions *øxh 58x225mm*

material *borosilicate glass*

Plustio

bubbles in tube

This hand-blown flute in borosilicate glass directly comes from an alchemist test tube. This is a classical example of de-contextualization of laboratory objects typical which, when properly modified become alternative design objects.

design *R&D Blueside*

♪ Miles Davis
Kind of blue

dimensions *øxh 50x210mm*

material *borosilicate glass*



Elio

a special toast

So fine, so light! Elio is the minimalist reinterpretation of the sparkling wine cup typical of the 50s. Ideal for lovers having a toast in a black and white picture, for a particular appetizer or a dessert on a stand.

design *Sara Guasticchi*

♪ Charlie Haden & Hank Jones
Sweet low sweet chariot

dimensions *øxh 107x195mm*

material *borosilicate glass*



Margot

a Margarita in the sun

Drinking a Margarita cocktail in a Margot glass, is an extraordinary experience. Its slanting cut recalls daisy in blossom seeking the sun.

design *Francesco Piretti*

♪ Joao Gilberto
Chega de Saudade

dimensions *øxh 140x230mm*

material *borosilicate glass*



BLUESIDE



Alfredo *for a great Martini cocktail*

Alfredo is the glass for a superior Martini Cocktail, the most classic and loved cocktail of all time.

Traditional Martini glass's functionality is enhanced with a modern design that makes Alfredo a one-of-a-kind glass! Don't forget the olive!

design *Francesco Piretti*

dimensions *øxh 115x165mm*

material *borosilicate glass*

♪ *Tosca*
Ho amato tutto





Cucumber *for extra large cocktails*

Individually handmade glasses in borosilicate glass. A fresh and fun way to quench your thirst. Try it for craft beers or outstanding long fruit drinks. Given its large size, it can be used in the middle of the table for a “One for Two Aperitif” with two straws for an intimate “tasting for two”...

design *Francesco Paretti*

♪ Michel Petrucciani
*One Night at Ken
and Jessica's*

dimensions *øxh 90x223mm*

material *borosilicate glass*



Pop *long drinks lover*

Pop is a borosilicate glass tumbler for mixology and bartending lovers. Its distinctive slanting cut makes it unique!

Ideal for special and popular long drinks such as Tequila Sunrise and Bloody Mary.

design *Francesco Piretti*

♪ Toto
Hold the line

dimensions *øxh 75x220mm*

material *borosilicate glass*





Gino *irresistibile Gin Tonic*

Gino is a borosilicate glass tumbler for luxurious cocktails. Its unusual slanting cut stands out among a thousand!!!

For an unforgettable gin and tonic, Gino is also great for Spritz and sparkling cocktails.

design *Francesco Paretti*

♪ Paolo Conte
Sotto le stelle del Jazz

dimensions *øxh 100x197mm*

material *borosilicate glass*

Xeno

lovable lightness

Xeno started the line of borosilicate glasses for mixology and bartending. Its distinctive slanting cut makes it original, light and elegant. Ideal for serving a variety of cocktails, it is certainly perfect for a Bacardi, a Daiquiri Frozen, digestive cocktails and spirits.

design *Francesco Piretti*

♪ Bob James
Topside

dimensions *oxh 105x208mm*

material *borosilicate glass*







Shot L e XL *tumbler revolution*

Very original line of borosilicate glass tumblers boosts the creativity of mixology and bartending lovers. Their concave bottom allows for enhancing the chromatic reflections of the cocktail being served. Even a simple whisky on the rocks served in Shot L will look amazing!

design *Francesco Paretti*

♪ Joe Barbieri
Naturalmente

dimensions *Shot L tumbler* øxh 75x80mm
Shot XL collins øxh 75x110mm

material *borosilicate glass*

Emilio *the simply tumbler*

Emilio is a glass that complements the “Tumbler” line. Its high thickness makes it unique and particularly suitable for muddled cocktails such as Mojito and Caipirinha, but also for amazing Rum & Cola.

The low Tumbler version is also ideal for tasting a fine whisky.

design *Francesco Piretti*

♪ Omar Sosa
Alma

dimensions *Tumbler* o x h 75x95mm
Collins o x h 75x145mm

material *borosilicate glass*





Ivo *the new vintage tumbler*

Lightweight and elegant, this glass was designed by the company's founder more than 50 years ago and is now brought back into the Blueside collection to recall our treasured roots.

The unique delicate strands of glass spirally welded around the glass are just one of the outstanding results of Blueside craftsmanship.

Ivo, in Tumbler and Collins versions, is the perfect glass for the mixology and bartending world not only for its beauty, but also for its great versatility.

design *R&D Blueside*

♪ Fred Buscaglione
Whisky facile

dimensions *Tumbler* o x h 75x77mm
Collins o x h 58x140mm

material *borosilicate glass*







Dandy *irresistible passion*

Small “glass/casket” ideal for rosoli rose petal liqueur and other aromatic liqueurs. Its slightly snobbish, intellectual style makes it unique of its kind and inimitable. An absinthe glass, the preferred alcoholic drink in the dandy period. Also splendid for sampling quality grappas.

design *Francesco Paretti*

♪ Mark Knopfler
Haul away

dimensions *øxh 70x118mm*

material *borosilicate glass*

Ottavio

relish all drink treats

This water glass has a stylized shape of number eight. Its sinuous and soft lines make it a practical and universal glass. Ottavio can suit any mise en place and is recommended for tasting water.

design *R&D Blueside*

♪ *Cristiana Polegri*
Meglio di così

dimensions *øxh 65x75mm*

material *borosilicate glass*



Sailor *marine rope*

Fabulous glasses whose slender stem takes inspiration from the typical sailor's rope. Inimitable design and excellent functionality make Sailor irresistible to lovers spirits. A unique ergonomic line allows an easy hold of the glass.

design *Esposito/Piezzo/Paretti*

dimensions *øxh 134x161mm*

material *borosilicate glass*

♪ Gotan Project
Diferente







Tulipano *reversible glass*

Reversible glass handmade from borosilicate glass. Ideal for both hot and cold beverages and cocktails in general, its surprising shape brings out the flavour, aroma and colour of the drink. The air space that characterizes its lines helps to insulate the beverage. It can also be tried as an alternative brandy snifter.

design *Sara Guasticchi*

♪ Lucio Dalla
Notte di luna calante
(Domenico Modugno)

dimensions *øxh 72x110mm*

material *borosilicate glass*



Moon *olfactory geometry*

Glass handmade from borosilicate glass, for great cognacs and fine spirits. Moon was designed seeking the best compromise between a shape that is comfortable to hold and the best possible olfactory perception.

The semispherical thick-walled design guarantees that the ideal temperature is maintained; with the double foot, it can be set in a vertical position for pouring the spirits and a second, inclined position for increasing the surface of the liquid exposed to the air as much as possible, so as to enhance the aromas.

design *R&D Blueside*

♪ Dr. John
World I never made

dimensions *øxh 81x81mm*

material *borosilicate glass*



Fred *bowling ball*

Hand blown glass for spirits with a unique shape that allows it to be held, and you feel you are dipping your fingers into the liquid without getting wet. Nothing can be more emotional than drinking with your own hand dipped into the glass. Fred is highly recommended for peaty whisky tasting.

design *Leonardo Borra*

♪ Janis Joplin
Cosmic Blues

dimensions *øxh 80x66mm*

material *borosilicate glass*



Genio ...and recklessness

A hand blown glass for spirits, unique in its kind.

Made with a double chamber: one for pouring the drink, and one for sipping it after having appreciated its aroma.

The innovative design allows the spirit to flow gently into the "tasting chamber", thus releasing the full force of its aromatic components.

Genio ("genie"), which resembles the famous "Aladdin's lamp," is held intimately in the palm of the hand, transmitting the warmth of the hand to the spirit, to bring out its aroma and flavour.

design *Leonardo Borra*

♪ Brad Mehldau
Songsong

dimensions *øxh 90x52mm*

material *borosilicate glass*



BLUESIDE



Artemisia

The absinthe drink: Baudelaire called it The “Green Fairy”, Van Gogh loved it and Oscar Wilde reckoned it the world’s most poetic.

Artemisia, an absinthe preparation kit made of borosilicate glass, enters fully the new Blueside Emotional Design collection.

Artemisia is a **convivial fountain comes with four taps, four glass sugar cube strainers, and four small glasses for tasting Absinthe.**

Elegant, fine, with a forbidden charm, this little masterpiece is a very functional and high-design object that looks gorgeous on bar counters, in starred restaurants and luxury hotels.

Absinthe fountain

The history of absinthe

The notoriety of this unique Artemisia-based drink, excellent as an appetiser paired with cheeses, also ideal for an end of a meal, had its greatest expression in the second half of the 19th century as a result of its use by artists and writers such as the Cursed Poets of the “Parisian Bohémienne.”

Absinthe, thanks to its particular taste and evocative ritual of preparation, became a drink of special appeal, and its use spread rapidly from France to large part of Europe. Having long been undeservedly prohibited, Absinthe is now increasingly regaining market share, appealing to consumers who care for quality and exclusivity and who search for original and really authentic sensory experiences.

Preparation

Percolate ice-cold water previously poured in the appropriate fountain into four small glasses containing about 15 ml of 65° concentrated Absinthe distillate.

The water that trickles down drop by drop through the finely adjustable taps not only dilutes and refreshes the distillate, but also serves the purpose of dissolving the sugar cubes on the strainers covering the four glasses.

Once the correct dilution is reached, the liquid will take on a milky green cloudiness, from transparent green to the formation of the so-called “louche”. Now you can leisurely relish your drink!

Artemisia



design *Francesco Piretti*

♪ Charles Aznavour
She

dimensions *Absinthe fountain* øxh 260x430mm
Absinthe glasses øxh 55x118mm
Strainer øxh 59x20mm

material *borosilicate glass,*
PTFE taps,
aluminum caps



Pablo

naked geometries

A desire that drives us towards our next sailing trip to Spanish coast...

Pablo is a particularly expressive blown glass vase, highly refined and with an evocative design.

A tribute to the great Pablo Picasso, master of cubism. Its essential lines take inspiration from nature, always perfect and unpredictable. Pablo with its water glass is also a jug, contributing to environmental sustainability.

design *Simone Micheli*

♪ Francesco De Gregori
Pablo

dimensions *jug* *øxh 80x255mm*
 glass *øxh 80x160mm*

material *borosilicate glass*







Ibridi *soft fusion*

Fascinating and harmonious set of carafe and glass made of hand blown borosilicate glass. Its sinuous and indefinite shapes are expression of excellence in the contemporary design.

design *Carlo Trevisani*

♪ Genesis
Ripples

dimensions jug owh 85x240mm
 glass owh 96x65mm

material borosilicate glass



Duck *smart casual*

The Duck carafes offer unusual shapes that give emotions and colour to the table.

Serving water or fresh drinks and fruit juices with the “tall” carafe allows you to pour liquids with care and appreciate its glass transparency. Useful for serving flavored water.

The “smaller” Duck is particularly suitable for liquid sauces and turns the table into a playful rainbow.

design *Cristian Visentin*

♪ Charlie Haden
It's me o Lore

dimensions *Tall* øxh 120x300mm
Small øxh 105x240mm

material *borosilicate glass*





Vinicio

a breath of wine

One of the highlights of the entire collection. Vinicio glass decanter, as well as its indisputable beauty, has been immediately appreciated for being highly functional. Aged wine which is decanted into the borosilicate glass decanter is forced through an obstacle course which gives the wine perfect oxygenation. The best that can be obtained compared with any other decanter.

design *R&D Blueside*
Designed by Chef Gennaro Esposito

♪ Duke Ellington
Cotton tail

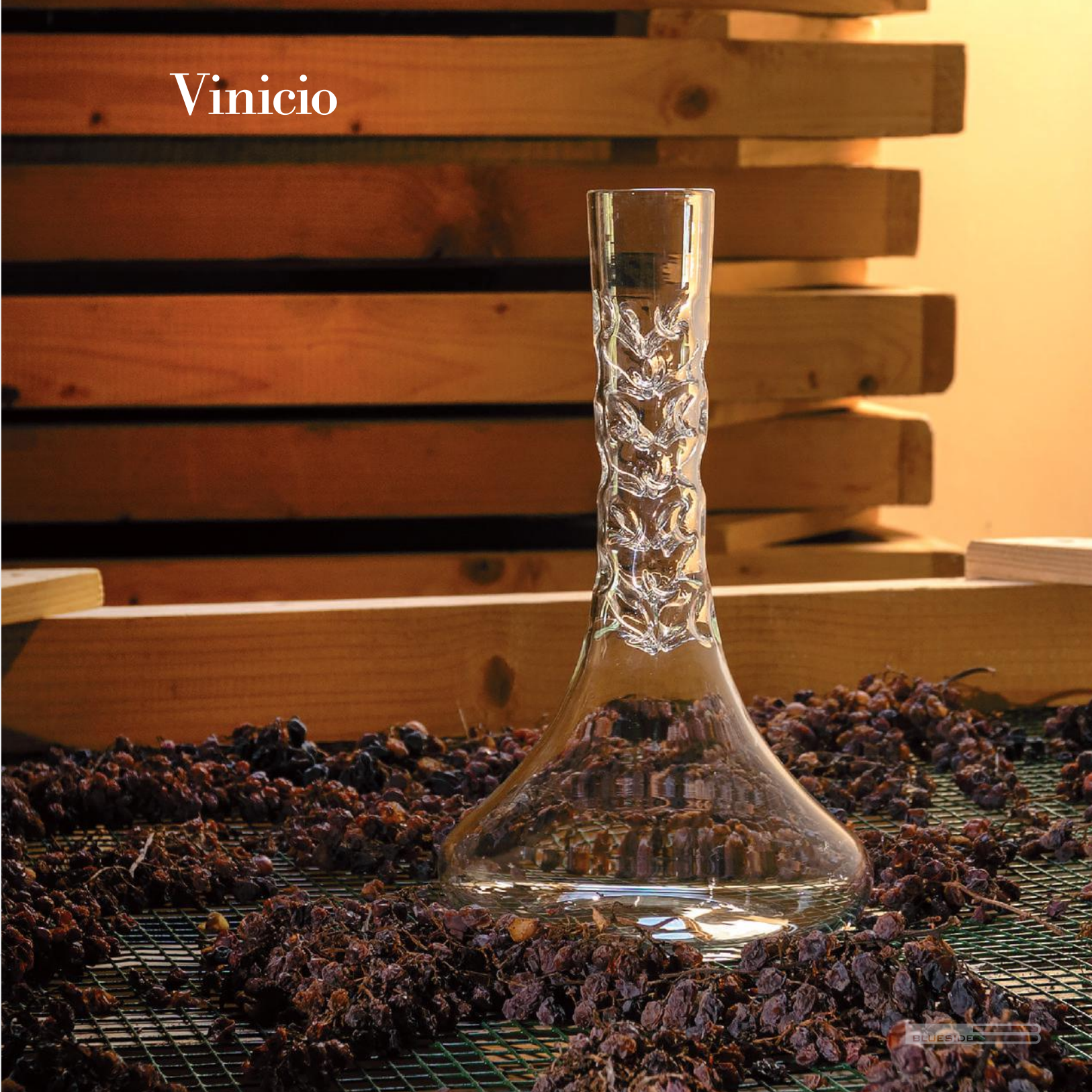
dimensions *decanter o x h 184x320mm*
extention for particularly
aged wines
o x h 62x300mm

material *borosilicate glass*





Vinicio





Gennaro *masterpieces in suspension*

Amazing borosilicate glass ball with little caves where you can place fancy pastry or small finger food appetizers. The delicacies embedded in the transparent glass seem to be suspended in the air thus delivering a colourful contrast to the dishes.

Gennaro comes in three versions:

Gennaro 60: 60 caves version for an amazing party

Gennaro 32: 32 caves version to be used as centerpiece for 4 people or for serving appetizers in finger food style

Gennaro 9: 9 caves version for 1 or 2 people.

design *R&D Blueside*
Designed by Chef Gennaro Esposito

♪ Gianmaria Testa
Seminatori di grano

dimensions *Gennaro 60*
øxh 490x423mm
Gennaro 32
øxh 320x280mm
Gennaro 9
øxh 165x145mm

material *borosilicate glass*









Shot & Minishot *double reversible glass*

Reversible glasses/saucers that can be used for coffee and the “ammazzacaffè” (“after-coffee shot”), to be used as a pair in inverted positions or as a little tasting plate for small hors d’œuvres or sauces.

design *R&D Blueside*

♪ Tom Waits
Hang down your head



dimensions *Shot* ozh 57x65mm
Minishot ozh 57x42mm

material *borosilicate glass*



Ambrosia

upsidedown surprise!

Reversible glass serving cake stand for high patisserie and creams, appetizers, sauces and dips, seafood crudités, sushi and sashimi with soy sauce. One of the highlights of the whole collection for its design, innovation and originality. Three versions: “conical”, “spherical” or “flat” shaped dish.

design *Matteo Giarè*

♪ Robben Ford
Revelation

dimensions *Conical version* *øxh 150x100mm*
Spherical version *øxh 150x120mm*
Flat version *øxh 150x160mm*

material *borosilicate glass*



Ambrosia







Tag *a cute tiny sauce warmer*

A gorgeous sauce warmer pot in borosilicate glass designed to enhance a hot sauce on the table. Tag has a holed base that fits a small candle to keep the sauce warm. Ideal for a paté, a fish broth for a tasty cous cous, or for a flavoured sauce of a predessert. Tag is a small chest of treasure recalling a piece of jewellery, for one or two diners.

design *Cristian Visentin*

♪ Stefano Bollani trio
Boccuccia di rosa

dimensions *øxh 80x185mm*

material *borosilicate glass*



Agilla *the best in the class*

Beautiful stand even by itself, pure, “naked” inside... an elegant deco object. Marvellous if used to raise food and dishes for classy banqueting.

design *Stefano Visconti*

dimensions *øxh 210x140mm*

♪ *Nina Simone*
I put a spell on you

material *borosilicate glass*





Eye *rocking* plate

Glass plate with an unusual concave shape, can be used either as a serving dish or for a place setting.

Unique for its transparency, which makes it possible to admire food from a new perspective, i.e. from below. It is excellent for all dishes with fish or meat, risottos, thick soups, rice or soy noodles cooked in a wok.

design *R&D Blueside*

♪ Dr. John
Personality (all tracks)

dimensions ø 280mm (single pack)
ø 180mm (pack of 4 pieces)
ø 120mm (pack of 4 pieces)
ø 90mm (pack of 4 pieces)

material *glass*

Dotto *simplicity*

Dotto is a modern, essential and an extremely versatile flat glass plate. Perfect to serve starters also in banquets and catering events, enhancing your imaginative delicacies.
Package of four plates.

design *R&D Blueside*

♪ Frank Sinatra
The song is you

dimensions *Big* øxh 200x24mm
Small øxh 145x20mm

material *glass*





Olivia

painting with oil

An innovative, extremely functional glass oil dispenser of extraordinary beauty.

Ideal for tasting and drizzling just the right amount of extra virgin olive oil on dishes.

From the conical opening you can appreciate the fragrant aromatic nuances and taste the bitter and spicy notes of this excellent condiment.

Olivia is a must for every home and every restaurant that aim to enhance Italy's "green gold".

An ideal dispenser for fine restaurants that present an olive oil list intended to offer a high quality selection.

design *Simone Micheli*

♪ Norah Jones
Turn me on

dimensions *Home* øxh 88x219mm
Taste øxh 50x150mm

material *borosilicate glass*









Iride *the sixth sense of oil*

Innovative glass for sampling and adding the right amount of olive oil.

Touch: the hemispherical shape that can be held in the palm of the hand allows the oil to heat to body temperature before sampling.

Sight: maximum glass transparency to enhance the colour reflections of the oil.

Smell: the slightly tapered shape of the upper part allows the aromas to be concentrated.

Taste: two-directional measures for right and left-handed people to trickle the precious condiment onto the food without the use of cutlery.

Hearing: by listening to music the taste of the oil is enhanced.

design *R&D Blueside*

♪ Charlie Haden Keith Jarrett
My ship

dimensions *øxh 75x60mm*

material *borosilicate glass*

Pilaf

the rice doser

A very original gift for rice lovers, the most popular food in the world!

Finally, the right portions of rice for your guests.

Each blown-glass bubble holds a different dosage according to the number of guests (2, 3 and 4 doses), based on 70 g per person, ideal dose for any type of rice or recipe.

design *Cristian Visentin*

♪ Aftehours
Quello che non c'è

dimensions *oxh 72x188mm*

material *borosilicate glass*





La cioccolatiera *golosa perfezione*

Wonderful design chocolate pot made of borosilicate glass to melt chocolate and keep it at long at the right temperature. Its spherical shape and glass transparency provide suggestive chromatic effects. It is ideal for professionals, high pastry lovers, and all those who take pleasure in tasting and conviviality. Easy to make your tasty chocolate fondue!

design *Francesco Piretti*

♪ B.B. King
All over again

dimensions *Cioccolatiera Conviviale*
oxh 180x180mm

Cioccolatiera Intima
oxh 100x100mm

Mestolo Conviviale
oxh 30x180mm

Mestolo Intimo
oxh 20x150mm

material *borosilicate glass*



Coly *glass curls*

Unusual designer object obtained from fragments of alchemist type coils used for distillation.

Nice idea to place small paper handkerchiefs, sheets of flat carasau bread, wafers or even letters and documents in the cracks between the coils.

design *R&D Blueside*

♪ Rod Stewart
Have you ever seen the rain

dimensions coil ø 105mm
tube ø 6mm

material *borosilicate glass*

Echoes

to hold emotions

Amazing series of fine cloches made of borosilicate glass ideal to enhance a dish as well as meeting the most creative chef needs in terms of table presentation.


The version with hole combined with a smoker can transform food and cocktails in trendy creations.

Echoes is highly suitable in the deco sector as it protects and enhances treasured and valuable objects.


design *R&D Blueside*

♪ Pink Floyd
Echoes

dimensions *Echoes conical*

 *Large* øxh 265x466mm
Medium øxh 204x358mm
Small øxh 125x216mm

Echoes round

 *Large* øxh 310x360mm
Medium øxh 260x310mm
Small øxh 152x185mm

material *borosilicate glass*

*Every versions is available
with hole for smoker*









Tala *tradition and innovation*

A high-tech design object to be used right over a stove burner with a heat diffuser. Cook and serve your dishes with this spectacular designer tajine!

design *Daniele Buschi*

♪ Francesco Guccini
Canzone della vita quotidiana

dimensions *for 4/6 people*
øxh 230x262mm

material *borosilicate glass*









Le legumiere *natural cooking in a flask*

Glass legume pot is the ideal product for cooking legumes in a flask. It can also be used as a beautiful design piece for decorating your kitchen or living room. It was inspired by the shape of the Tuscan Chianti wine flask, which is used in rural tradition for cooking beans.

Venere, the ancient Roman goddess of beauty, love and fertility, is also the second planet in the solar system, inspiring its spherical shape.

Morandi pot is dedicated to Giorgio Morandi, the great post-impressionist painter born in the late 1800s who always painted bottles in the room where he lived all his life.

Shotel, an elegant bottle in borosilicate glass that takes us back to the wares of ancient patrician Rome and the opulent banquets of that era.

design *Piercarlo Crachi*

♪ Fabio Concato
Tienimi dentro te

material *borosilicate glass*

*Standard equipment:
1 legumiera, natural cork stopper for food
use with a borosilicate glass vent, heat
diffuser, plastic funnel, tasting ladle of
handmade stainless steel for tasting the
legumes during cooking*



Venere

dimensions *øxh 185x296mm*



Shotel

dimensions *øxh 186x305mm*

Morandi

dimensions *øxh 188x143mm*









Tazzezen *relaxing break*

An espresso coffee, an american coffee, a cup of tea or a cappuccino will be more enjoyable if sipped from these striking cups. Thanks to the dual chamber you do not risk burning yourself with hot beverages and at the same time the beverage stays hot longer.

design *R&D Blueside*

♪ Pink Floyd
Alan's psychedelic breakfast

dimensions *Tazzezen Caffè Espresso*
øxh 58x65mm

Tazzezen Cappuccino/Tè
øxh 75x80mm

Tazzezen Caffè Americano
øxh 75x110mm

material *borosilicate glass*



Anastasia *the infuser of your wishes*

The first designer infuser. Elegant and practical, it adapts perfectly to preparing any tea or infusion. Transparent and very pure, since it is made of borosilicate glass. Its special shape allows the infusion to be stirred to obtain better diffusion within the glass that is completely resistant to thermal shock.

design *Sara Guasticchi*

♪ Rosenberg Trio
For sephora

dimensions *Suk glass*
Anastasia infuser

material *borosilicate glass*

oxh 95x95 mm
oxh 32x150 mm



Oscar *emotional glass samovar*

"You drink tea to forget the noise of the world"

T'ien Yiheng

Tea lovers do enjoy every little moment life offers. Around the world, tea is not only a precious drink full of beneficial principles, it is also lifestyle and closely connected to the culture of country of origin. Oscar, the designer glass samovar meets all the aesthetic and sensory needs of those who want to best prepare a relaxing cup of tea.

Borosilicate glass transparency allows to observe the cleanliness inside and the double glass wall acts as a thermal insulator.

Oscar samovar can also be used as a piece of beautiful furniture in the living room, spa relax rooms, lounge bars or even in work coffee break areas.

design *Francesco Paretti*

♪ Bill Evans
I loves you Porgy

dimensions *stainless steel base*
øxh 240x190mm
glass container
øxh 250x407mm

Samovar capacity 5 lt
heating 1400 W
Bea teapot capacity 1.1 lt

material *borosilicate glass*
and stainless steel

Oscar *dispenser*





Oscar *emotional glass dispenser*

Oscar Dispenser is not a simple beverage dispenser, it boasts an appealing design that can be used as a deco object. Borosilicate glass transparency allows to observe cleanliness and chromatic effects of coloured drinks. The double glass jacket, which acts as a thermal insulator, prevents user from burning while long maintaining temperature of hot and cold drinks. Available with or without steel base.

design *Francesco Paretti*

♪ Dr. John
Voices in my heart

dimensions *stainless steel base*
oxh 240x190mm
glass container
oxh 250x407mm
dispenser capacity 5 lt

material *borosilicate glass*
and stainless steel



Bea *purity inspiration*

Bea is a very elegant teapot that perfectly fits over Oscar samovar and can be used simply by itself.

Bea's infuser can also be used for flavoured oils.

design *Francesco Piretti*

♪ Elvis Costello
She

dimensions *øxh 120x210mm*

material *borosilicate glass*



Philomena

pouring with elegance

Philomena is not only a fine borosilicate glass server for special broths and liquid sauces accompanying gourmet dishes, but it is also an individual teapot to relish a special tea. A perfect mise en place, a delightful touch that leaves nothing to chance.



Philomena

design *Næss Studio*

dimensions *øxh 90x133mm*

material *borosilicate glass*

♪ Keith Jarrett, Charlie Haden
One day I'll fly away



Phil Ninety-Three

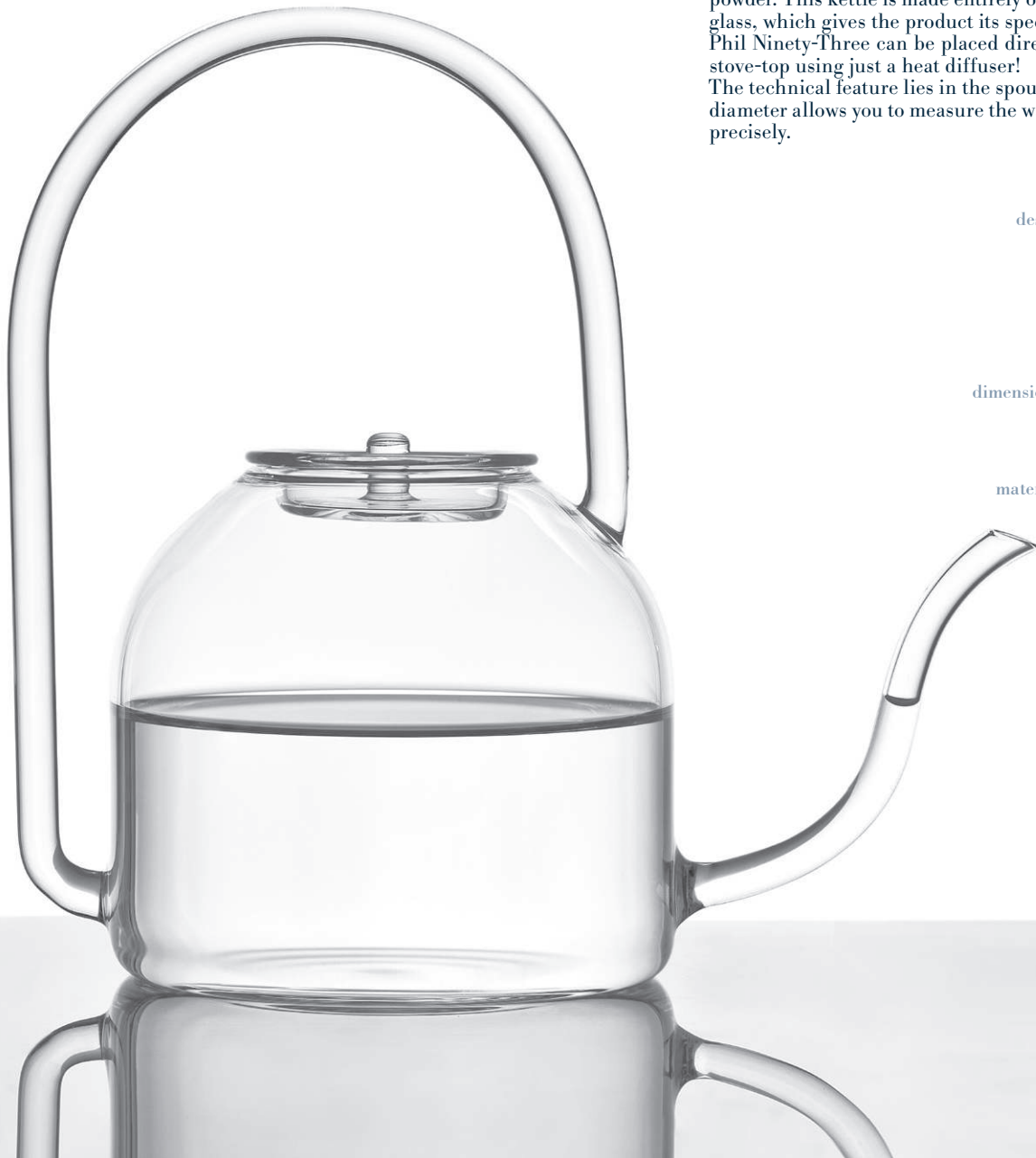
Phil Ninety-Three, 93° which is just the right temperature of the water to pour over the coffee powder. This kettle is made entirely of borosilicate glass, which gives the product its special identity. Phil Ninety-Three can be placed directly over the stove-top using just a heat diffuser! The technical feature lies in the spout: the narrow diameter allows you to measure the water you pour precisely.

design *Næss Studio*

♪ *Sting*
So lonely

dimensions *Teapot with cork*
oxh 130x225 mm
without spout

material *borosilicate glass*





Phil Rain

Phil Rain coffepot reveals the fascinating chemical process, which transforms an excellent raw material into a tasty drink. It formally conjures a scientific, futuristic effect.

Brewing coffee with this product will enhance all the fascination of the chemical process it represents: the water required can be poured directly and the coffee does everything by itself. This makes it easy to prepare a number of filter coffees at the same time. Load all the water cylinders and just stand and watch!

design *Næssi Studio*

♪ Sting
Shape of my heart

dimensions *øxh 100x350mm*

material *borosilicate glass*



Cuore *the cup of your dreams*

This coffee cup derives from the transformation of a scientific laboratory object.

By re-shaping a borosilicate glass obsolete object, a tiny and cute espresso coffee cup came to light. The ideal glass cup for coffee lovers!

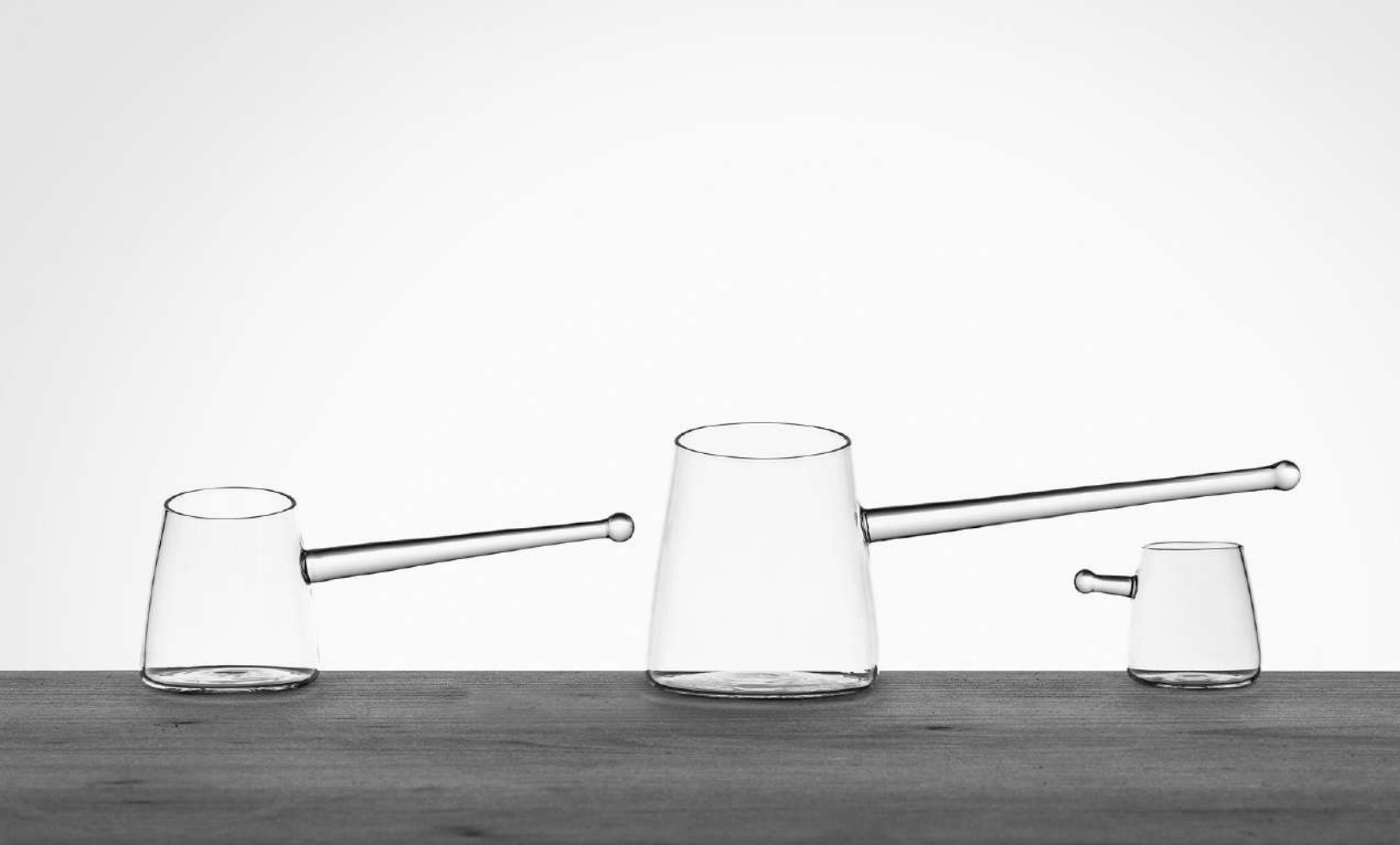
design *Francesco Piretti*

♪ Segio Cammariere
Acqua nell'acqua

dimensions *øxh 60x61mm*

material *borosilicate glass*





Briki *a Turkish coffee experience*

Turkish coffee is spread all over the Middle East, particularly in Turkey and Greece.

The delicious coffee is brewed in a cezve by putting water, sugar and extra fine grind coffee powder into this famous long-handled copper pot.

Blueside Briki coffee maker finds its origins in the ancient object and becomes a design coffee pot for two or four Turkish coffee cups.

design *Francesco Piretti*

♪ Billy Preston
You can't beat God giving

dimensions *Cezve for two cups*
øxh glass coffee 80x90mm handle 150mm

Cezve for four cups
øxh glass coffee 107x120mm handle 200mm

Glass coffee cup da 50 ml
øxh 63x68mm

material *borosilicate glass*







vintage

emotional

design

Blue...

Blueside is about the “blue” side of life.

Blue is classic, noble and modern at the same time.

Blue recalls the depth of the sea, the immensity of the sky, and other magnificent blue elements of nature.

Blue evokes deep feelings for meditation making us feel calm and safe. In a blue-painted room our heart beats slowly.

For the Chinese and the ancient Egyptians blue was the colour of immortality.

Blue gives birth to the **Blues** musical style - the origin of **jazz**, **rock**, and all contemporary music - which expresses African Americans’ nostalgia, full of pathos and rhythm.

The *Blueside* collection offers deep emotions that leave their mark forever.





index

15



Modigliani
the elevation of wine

16



Chino
stage applause

17



Botero
colourful cavities

18



Sospiro
the tavern wine glass

20



Mood
bubbles through and through

21



Plustio
bubbles in tube

22



Elio
a special toast

23



Margot
a Margarita in the sun

25



Alfredo
for a great Martini cocktail

26



Cucumber
for extra large drinks and great beers

27



Pop
long drinks lover

28



Gino
irresistible Gin Tonic

29



Xeno
lovable lightness

30



Shot L e XL
tumbler revolution

32



Emilio
the simply tumbler

34



Ivo
the new vintage tumbler

36



Dandy
irresistible passion

37



Ottavio
relish all drink treats



38 **Sailor**
marine rope



40 **Tulipano**
reversible glass



41 **Moon**
olfactory geometry



42 **Fred**
bowling ball



43 **Genio**
...and recklessness



44 **Artemisia**
Absinthe fountain



48 **Pablo**
naked geometries



50 **Ibridi**
soft fusion



51 **Duck**
smart casual



52 **Vinicio**
a breath of wine



56 **Gennaro**
masterpieces in suspension



60 **Shot & Minishot**
double reversible glass



62 **Ambrosia**
upside down surprise



66 **Tag**
a cute tiny sauce warmer



67 **Agilla**
the best in the class



68 **Eye**
rocking plate



69 **Dotto**
simplicity



70 **Olivia**
painting with oil



74

Iride
the sixth sense of oil



75

Pilaf
the rice doser



76

La cioccolatiera
delicious perfection



77

Coly
glass curls



78

Echoes
to hold emotions



82

Tala
tradition and innovation



87

Venere
natural cooking in a flask



88

Shotel
natural cooking in a flask



89

Morandi
natural cooking in a flask



92

Tazzezen
relaxing break



93

Anastasia
the infuser of your wishes



94

Oscar
emotional glass samovar



Oscar
emotional drink dispenser



98

Bea
purity inspiration



99

Philomena
pouring with elegance



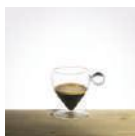
101

Phil Ninety-Three



102

Phil Rain



103

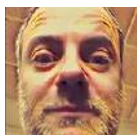
Cuore
the cup of your dreams



104

Briki
a Turkish coffee experience

designers



Leonardo Borra



Daniele Buschi



Piercarlo Crachi



Matteo Giarre



Sara Guasticchi



Simone Micheli



Næssi Studio



Francesco Paretti



R&D Blueside



Carlo Trevisani



Stefano Visconti



Cristian Visentin

emotional

Steroglass® srl is the owner of all products, photographs and texts in this catalogue.

All rights reserved Steroglass® srl, no part of this catalogue even partial may be reproduced, stored in a retrieval system, or trasmitted in any form or by any means.

Steroglass® srl, the owner of the Blueside trademark, has all rights to add any changes to this catalogue without prior notice.

design

credits

art direction Edoardo Tintori

photo Edoardo Tintori photostudio, Roberto Vaccai

photo setting Master barman Emilio Sabatini

Lisa Falocci, Montecorneo570 - La casa

graphic design Eraldo Marini

print Tipolito Properzio

historical research Rosella Calzoni

acknowledgements... to Stefano Falocci for strongly believing in the Blueside project and all those who have closely supported this group of dreamers to create the whole Blueside collection.



STEROGLASS s.r.l.
Via Romano di Sopra, 2/C
06132 S. Martino in Campo
Perugia - Italia
tel +39 075 60 90 958
fax +39 075 60 90 934
info@blueside-design.com
www.blueside-design.com

PERUGIA *showroom*
via Oberdan, 41

BLUESIDE Emotional Design



[blueside_emotional_design](https://www.facebook.com/blueside_emotional_design)



COMPANY WITH
QUALITY SYSTEM
CERTIFIED BY DNV
ISO 9001

STEROGLASS® is the owner of the BLUESIDE® trademark