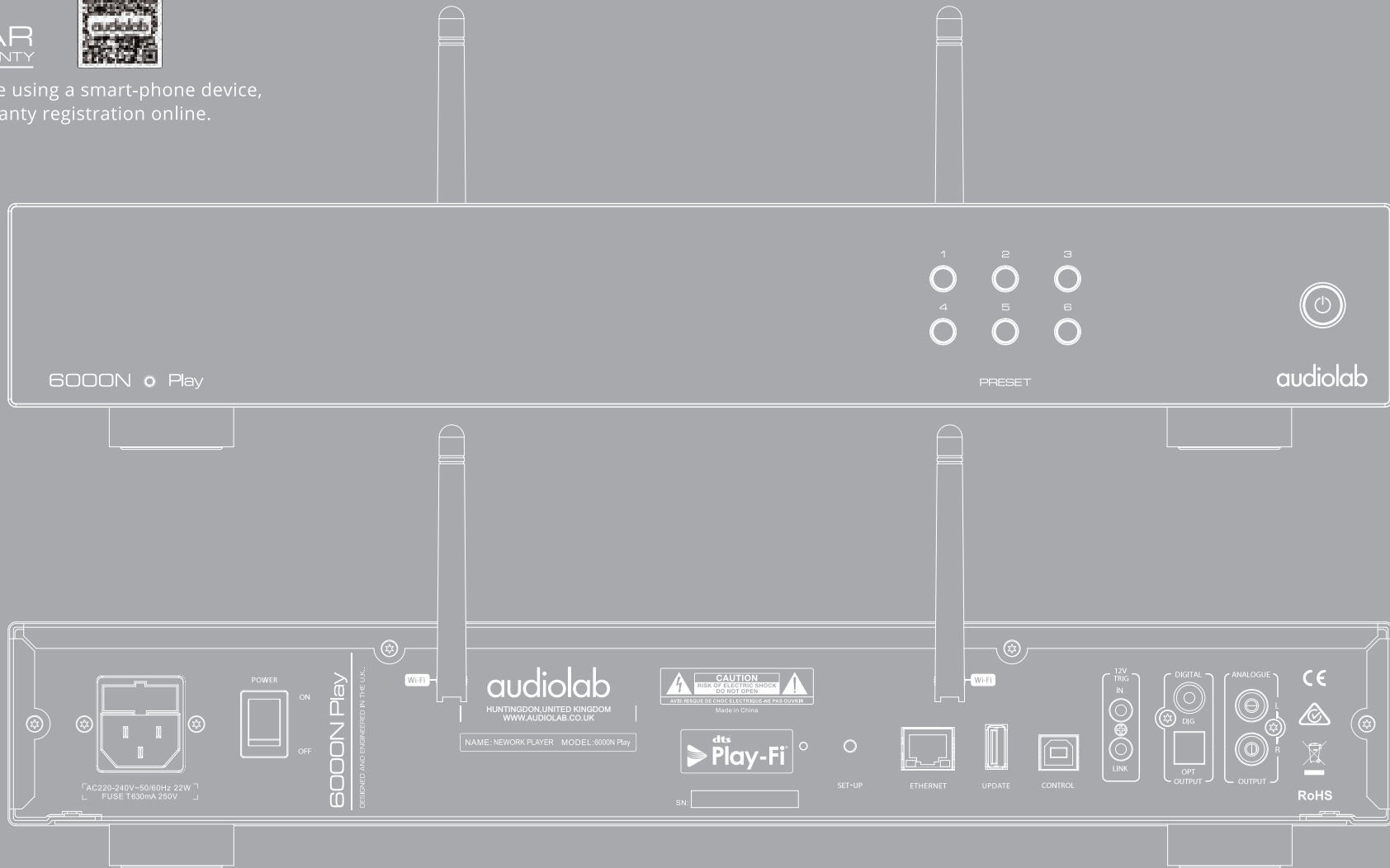


3 YEAR WARRANTY



Scan the QR code using a smart-phone device, for product warranty registration online.



6000N Play User Manual

audiolab

1: Important safety instruction



This lightning flash with arrowhead symbol within an equilateral triangle is intended to alert the user to the presence of non-insulated “dangerous voltage” within the product’s enclosure that may be of sufficient magnitude to constitute a risk of electric shock.

Warning: To reduce the risk of electric shock, do not remove cover (or back) as there are no user-serviceable parts inside. Refer servicing to qualified personnel.

The exclamation point within an equilateral triangle is intended to alert the user to the presence of important operating and maintenance instructions in the literature accompanying the appliance.

IMPORTANT SAFETY INSTRUCTION

Read these instructions.

Keep these instructions.

Heed all warnings.

Follow all instructions.

Do not use this apparatus near water.

Clean only with dry cloth.

Do not install this equipment in a confined or building-in space such as a book case or similar unit, and remain a well ventilation conditions at open site. The ventilation should not be impeded by covering the ventilation openings with items such as newspaper, table-cloths, curtains etc.

Do not install near any heat sources such as radiators, heat registers, stoves, or other apparatus (including amplifiers) that produce heat.

Do not defeat the safety purpose of the polarized or grounding-type plug. A polarized plug has two blades with one wider than the other. A grounding plug has two blades and a third grounding prong. The wide blade or the third prong is provided for your safety. If the provided plug does not fit into your outlet, consult an electrician for replacement of the obsolete outlet.

Protect the power cord from being walked on or pinched particularly at the plugs, convenience receptacles, and at the point where they exit from the apparatus.



Use only with the cart, stand, tripod, bracket, or table specified by the manufacturer, or sold with the apparatus. When a cart or rack is used, use caution when moving the cart/apparatus combination to avoid injury from tip-over.

Unplug this apparatus during lightning storms or when unused for long periods of time.

Refer all servicing to qualified service personnel. Servicing is required when the apparatus has been damaged in any way, such as power supply cord or plug is damaged, liquid has been spilled or objects have fallen into the apparatus, the apparatus has been exposed to rain or moisture, does not operate normally, or has been dropped.

CAUTION: These servicing instructions are for use by qualified service personnel only. To reduce the risk of electric shock, do not perform any servicing other than that contained in the operating instructions unless you are qualified to do so.

Do not install this equipment in a confined or built-in space such as a bookcase or similar unit, and keep well ventilated in open space. The ventilation should not be impeded by covering the ventilation openings with items such as newspaper, table-cloths, curtains etc.

WARNING: Only use attachments/accessories specified or provided by the manufacturer (such as the exclusive supply adapter etc).

WARNING: Please refer to the information on the exterior panel of the enclosure for electrical and safety information before installing or operating the apparatus.

WARNING: To reduce the risk of fire or electric shock, do not expose this apparatus to rain or moisture. The apparatus shall not be exposed to dripping or splashing and that objects filled with liquids, such as vases, shall not be placed on apparatus.

WARNING: The mains plug/appliance coupler is used as disconnect device, the disconnect device shall remain readily operable.

WARNING: For the terminals marked with symbol of “⚡” the voltage may be of sufficient magnitude to constitute a risk of electric shock. The external wiring connected to the terminals requires installation by a qualified person or the use of ready-made leads or cords.



Protective earthing terminal. The apparatus should be connected to a mains socket outlet with a protective earthing connection.

The product is designed to use in moderate/tropical climates.

Mains Supply: The mains operating voltage of Audiolab 6000 series units is shown on the rear panel. If this voltage does not match the mains voltage in your area, consult your Audiolab dealer about converting the unit.

The mains supply fuse on the rear panel is accessible when the IEC mains plug has been removed. In the rare event that it has broken, check for any obvious cause before replacing the fuse with one of the correct rating and type.

The fuse values are:

220 – 240V (UK, China, etc.) T630mAL 250V Slow Blow

100 – 120V (USA, Japan, etc.) T1AL 250V Slow Blow

2: Contents

audiolab
6000N Play

INTRODUCTION 4

CONTROLS AND FUNCTIONS 5

CONNECTION 7

DTS PLAY-FI® 8

DOWNLOAD THE APP 9

WI-FI CONNECTION USING THE APP 10

WI-FI CONNECTION SETUP USING A WINDOWS PC OR MAC 11

APP OPERATIONS 12

WARRANTY COVERAGE 16

SPECIFICATIONS..... 18

3: Introduction

Introduction

Welcome to Audiolab 6000N Play - a wireless audio streaming player which is the latest member of the acclaimed Audiolab 6000 series of components. Featuring DTS Play-Fi Technology, music can be streamed over your wireless network in high resolution format and can be easily expanded to a multi-room system if required. You can stream from any source on your wireless network, including smart-phones, tablets or PCs as well as a NAS Drive. However you want to stream your music, Audiolab's 6000N will deliver an outstanding performance.

Unpacking the equipment

The carton contains:

- The Audiolab 6000N Play
- One IEC mains cable with a plug suitable for your area
- One USB B data cable
- One Audiolab 6000N Play user manual

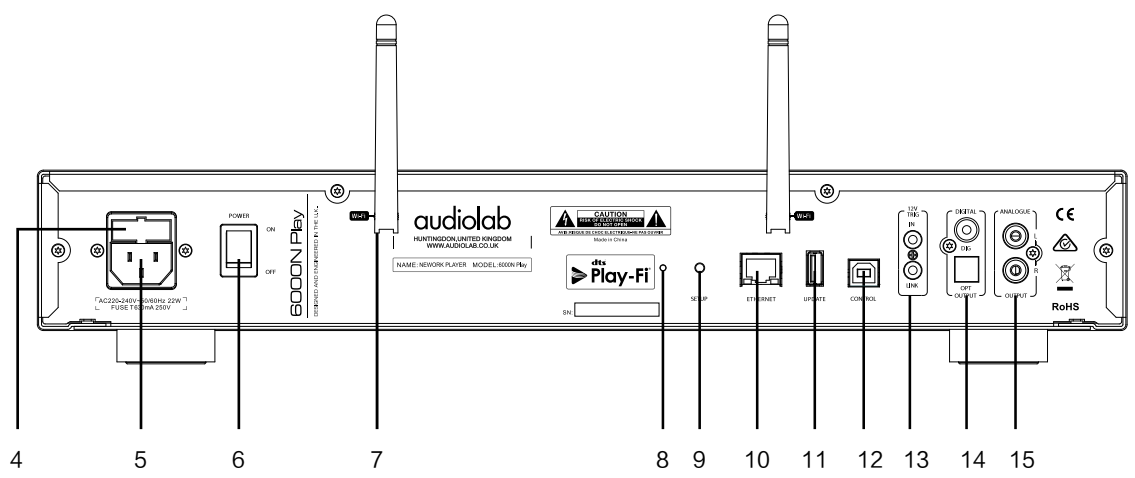
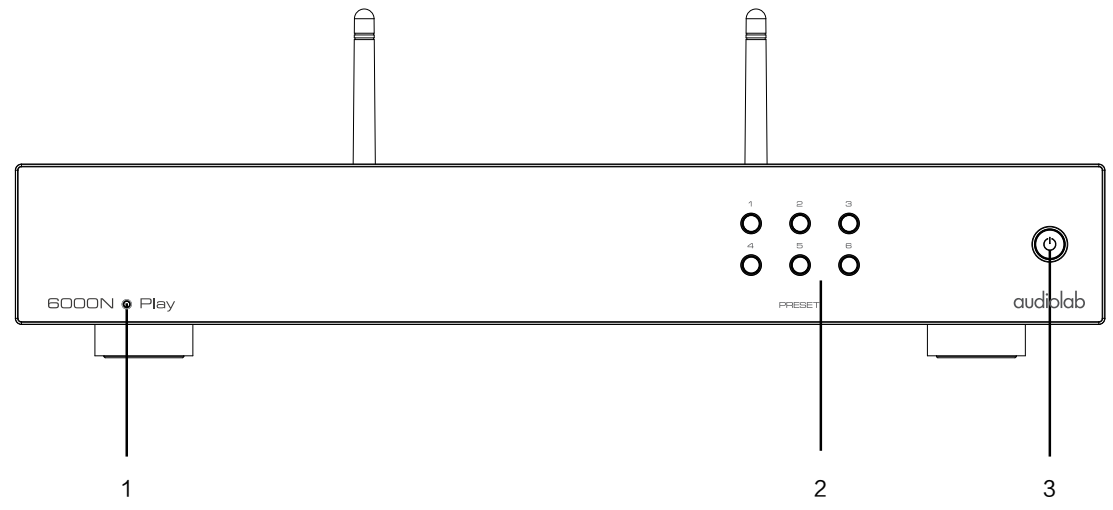
Consult the dealer from whom you purchased the equipment if any item is not present. Carefully unpack the unit and accessories. Take care not to damage the surface finish when undoing the protective polythene sleeve. Retain the packing materials for future use. Retain the user manual and information concerning the date and place of purchase of your equipment for future reference. If you transfer the unit to a third party please pass on this instruction manual along with the equipment.

Placement

The unit must be mounted on a solid, level and stable surface.

Before you connect the Audiolab 6000N Play to AC mains power, ensure your AC mains voltage corresponds to the rating on the rear panel of the product. If in doubt, consult your dealer. If you move to an area which has a different mains voltage, seek advice from an Audiolab appointed dealer or a competent service technician.

4: Controls and functions - 1 Page 5



1. Indicators

Device States	LED States
Standby Mode	LED is dark red
Initialization Mode	LED fast-flash white
Standard Setting Mode	LED slow-breathe white
WPS Mode	LED double-flash white
Network Connecting	LED slow-flash white
WiFi Network Connection	LED is bright white
Wired Network Connection	LED is bright red

2. The PRESET Button

Store/Play Internet Radio Stations - up to 6 Stations can be stored.

To store a station, press and hold a Preset button for 3 seconds. The LED will double-flash once to show it is stored. If it fails to store the LED will double-flash three times.

To Play a Station, press a Preset button briefly. The LED will double-flash once.

Failure to play a station will be signaled by the LED double-flashing 3 times.

Combination key function :

Factory Reset

Press and hold Preset button "1" and "4" for 8 seconds, the red LED will flash twice with a tone, then the device will restart automatically.

Analogue Output Level Setting

Press and hold Preset button "2" and "5" for 3 seconds, the analogue output level can be switched between fixed and variable.

When set to fixed mode, the red LED on the front panel will flash thrice, the analogue output level will be fixed to the maximum output.

When set to variable mode, the red LED on the front panel will flash twice, then the analogue output level can be adjusted by APP. The default setting on 6000N Play is variable mode.

4: Controls and functions - 2 Page 6

3.Standby Button

When in Standby mode, the power LED will glow in dark red. There are various standby mode options available. You can activate these options by holding the Standby button for 4 seconds and then;

- 'Never in auto-standby' mode: short press the Standby button when it flashes once. By default, 6000N Play is set in this mode.
- 'Auto-standby after 20 minutes': short press the Standby button when it flashes twice.
- 'Auto-standby after 1 hour': short press the Standby button when it flashes thrice.

4.Fuse

The fuse specification:

220~240V (UK, China, etc.) T630mAL 250V Slow Blow
 100~120V (America, Japan, etc.) T1AL 250V Slow Blow

5.AC Mains Socket

You can select between AC mains voltages 115V or 230V using the switch on the underside of the case. Before connecting the unit to AC mains power, please check that the voltage switch is set to match to your AC mains voltage.

6.AC Power Switch

Before connecting the AC power cord to the 6000N, please make sure the Power Switch is in the Off position. Switch it to the ON position after connecting the unit to the AC mains.

7.Wi-Fi Antenna

DTS Play-Fi is compatible with any router which is authenticated to Wi-Fi standards. We recommend the use of 802.11n or better which enables 2.4GHz and 5 GHz transmission frequencies. If you have the option, 5GHz connection will give the most stable performance.

8.Wi-Fi LED State Indicator

Device States	LED States
Initialization Mode	Fast-flash
Standard Setting Mode	Slow-breathe
WPS Mode	Double-flash
Network Connecting	Slow-flash
Wi-Fi Network Connection	Brightly lit
Wired Network Connection	Off

9.Wi-Fi Setting Button

Press and hold the Wi-Fi Setting Button for 4 seconds to enter WPS mode. Press and hold for 8 seconds to enter the Standard setup mode.

10.Ethernet Port

Use a suitable cable to plug the Ethernet Port to the LAN port of a wireless router for wired connection.

11.Update Interface

This USB interface is only to be used for upgrading the internal firmware. It cannot be used for USB media sources.

Upgrade method: Put the Audiolab upgrade file on a USB memory stick and insert into the Update Interface. Hold down the Standby Button on the front panel, turn on the power switch then release the button. The red LED on the front panel will flash as the upgrade takes place. After the upgrade completes, a 'relay' sound will be heard and the red LED glows steady and dimly. You can then unplug the USB stick and operate the 6000N.

12.USB Control Interface

If you are using 6000N with the Audiolab 6000A amplifier, connect this USB Control Interface to the 6000A 'Update' Interface with a USB B data cable. You can then use the Play-Fi APP to control the listening volume.

Please note: the USB Control Interface cannot be used to link to a PC or output digital music data.

13.12V TRIG Interfaces

Two standard 12V trigger interfaces are provided to allow the 6000N to be switched off and on remotely. Connect the 12V trigger source equipment to the 'IN' interface. The 'LINK' interface can be used as an output to daisy-chain the 12V trigger.

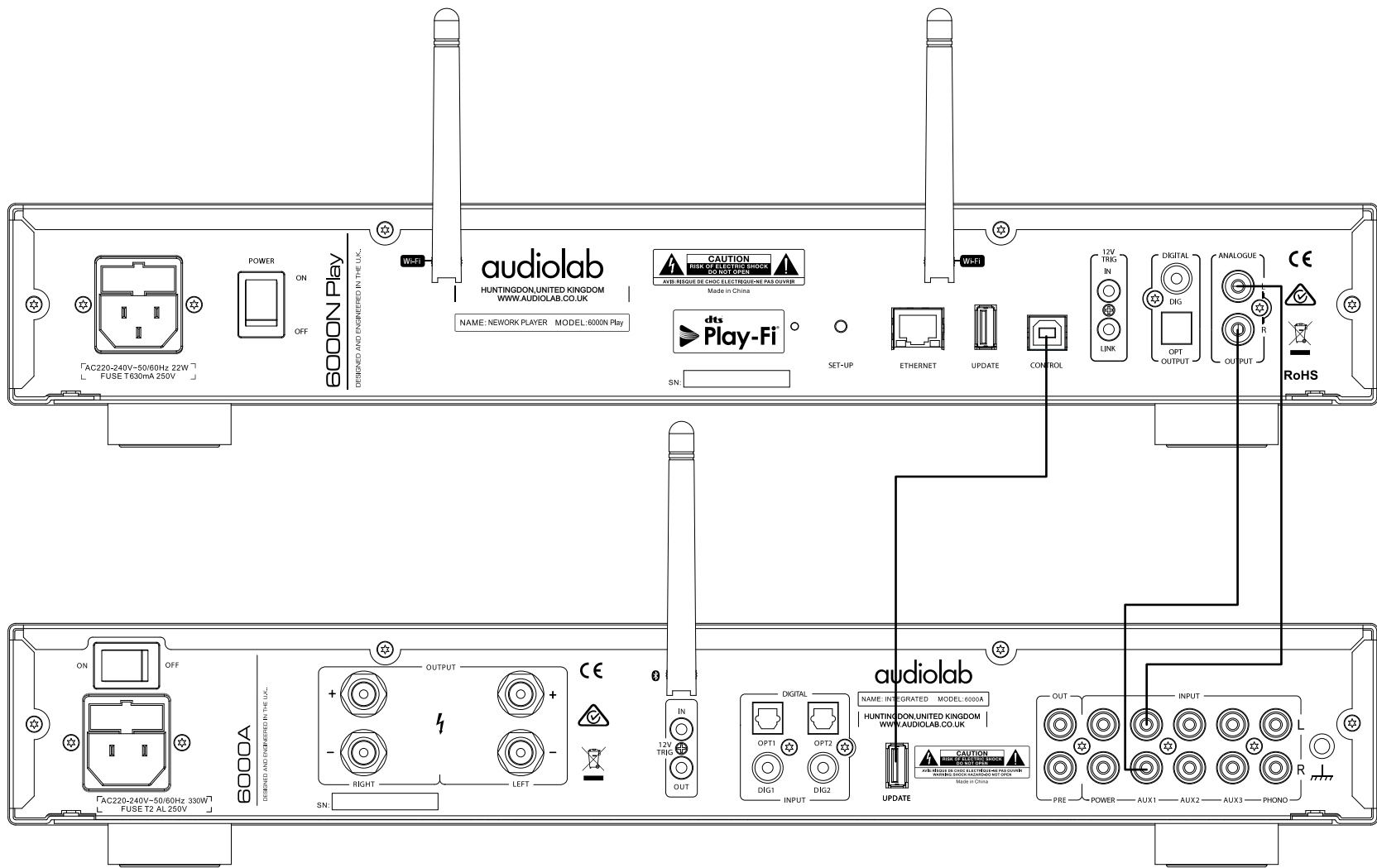
14.Digital Signal Output Interface

Two Digital Signal outputs are provided - one COAX and one OPT (Optical). The maximum output resolution of the PCM digital signal is 24 bit/192kHz.

15.Analogue Signal Output Interface

Use this stereo output to connect to an amplifier or other device that accepts an analogue input using a shielded RCA cable.

5: Connections Page 7



Note: 1. For Audiolab 6000N the COAX and OPT outputs transfer the PCM digital signal at up to 24 bit/192kHz resolution.

2. Using the DTS Play-Fi APP the volume of the analogue output can be controlled. When using the 6000N with the Audiolab 6000A amplifier, connect the USB Control Interface to the 6000A Update input to synchronise the volume of the 6000A using the APP.

6: DTS PLAY-FI® - 1 Page 8

Key Features

DTS Play-Fi puts you in complete control of your music. It gives you the freedom to effortlessly stream via Wi-Fi® from any device to any speaker in any room in your house. It's never been easier to listen to music with the people you love, in the place you love most. A place where memories are made and music plays the starring role.



WI-FI® TECHNOLOGY

DTS Play-Fi streams music over standard Wi-Fi networks, delivering perfectly synchronized audio, with no lag and zero loss in sound quality.



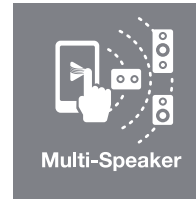
MULTI-ROOM

Enjoy music in every room of your house — all at once, perfectly synchronized, with no lag. You're in control.



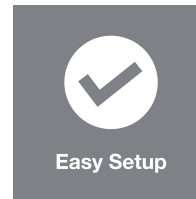
ANY OPERATING SYSTEM

Fully compatible with all operating systems: Apple iOS, Android™, Windows® PC, and Fire OS.



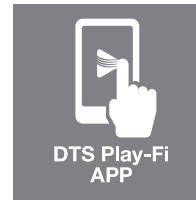
MULTI-SPEAKER

DTS Play-Fi is open to all speakers, no matter the size, shape, or brand. It's a truly all-inclusive system.



EASY SETUP

No logins, no complicated computer-based setups. Just download the app and within minutes, you're ready to listen.



DTS PLAY-FI APP

Simply download the free app and immediately send songs via Wi-Fi to any speaker in any room of the house.

For DTS patents, see <http://patents.dts.com>. Manufactured under license from DTS Licensing Limited. DTS, Play-Fi, the Symbol, and Play-Fi together in combination with the Symbol are trademarks of DTS, Inc. DTS and Play-Fi are registered trademarks of DTS, Inc. © DTS, Inc. All Rights Reserved.

7: DTS PLAY-FI® - 2

Download the DTS Play-Fi APP

The DTS Play-Fi APP can be downloaded from the Google Play Store, Amazon APP Market or Apple App Store. For Windows PC you can download the Play-Fi Windows APP from the official website: <https://play-fi.com>



Network settings

Wired network setting

Connect the Ethernet Port to the LAN port of a wireless router using a suitable cable. After switching on the 6000N, the red LED indicators on the front and rear panels will flash during the connection phase. If the connection is successful, the LED on the rear panel will go off and the front panel LED will be brightly lit.

Wireless Network Setting

You can connect to a wireless network using one of two modes: WPS Mode or Standard Mode.

WPS Mode:

In order to make the 6000N enter WPS Mode, switch the unit on and press and hold the Wi-Fi SETUP button on the rear panel for 4 seconds. The Wi-Fi LED will double-flash with a tone indicating that WPS Mode is active. Then press the WPS key on your wireless router and the unit should connect to your wireless network automatically. This connection phase may take up to 60 seconds. If the connection fails, please try again.

Standard Mode:

After switching the 6000N on, press and hold the Wi-Fi SETUP button on the rear panel for 8 seconds. For the first 4 seconds the LED will double-flash with a tone - keep holding the button down and after 8 seconds the Wi-Fi LED will flash quickly with the same tone. The Standard connection mode is now active.

When the Standard connection Wi-Fi hotspot is active the Wi-Fi LED will flash-breathe with a slow fluctuation between off and on (reflected by the white LED on the front panel). You can now use your Android or IOS device to enter the Wi-Fi password using the DTS Play-Fi APP as follows (see next page):

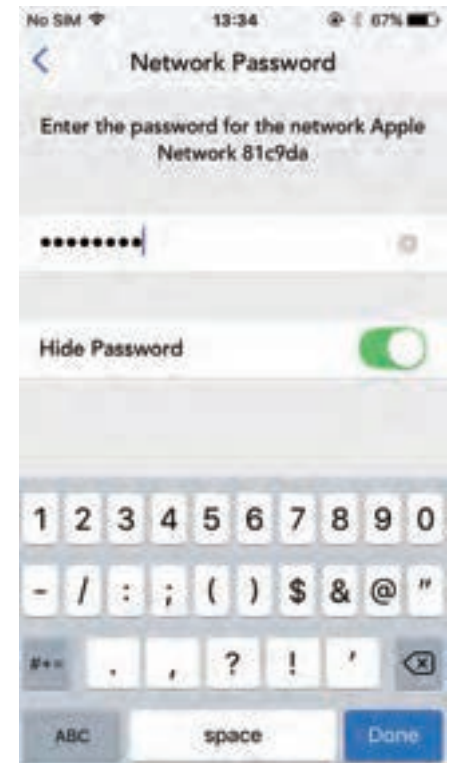
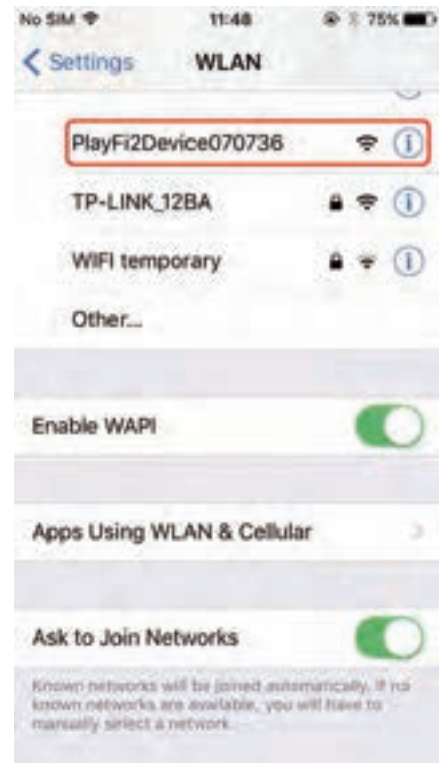
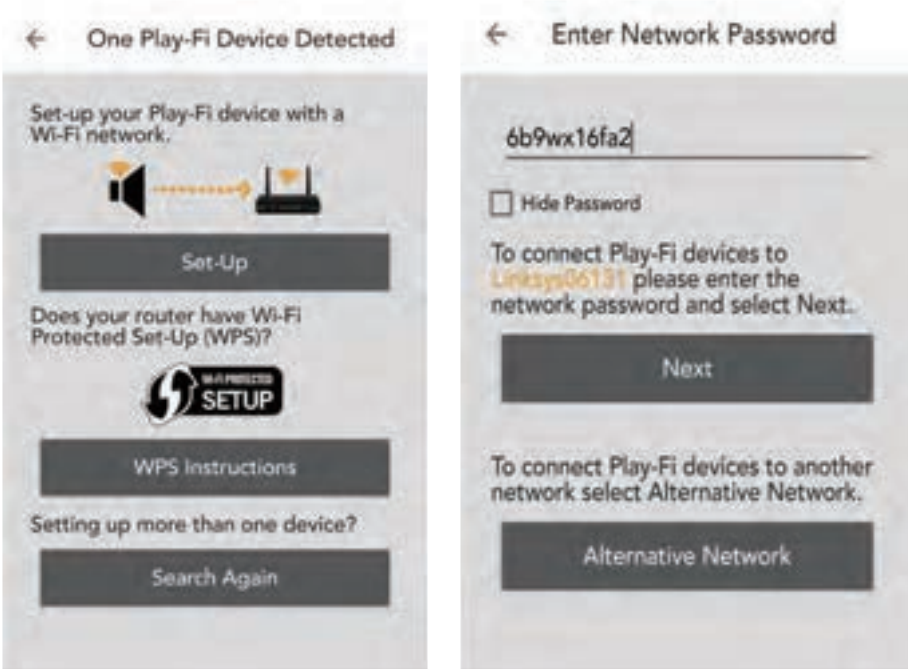
8: Wi-Fi Connection Setup - 1 Page 10

For Andriod users:

- (1) Open the DTS Play-Fi APP, then click the 'Set-up your Play-Fi device' button.
- (2) When it has found the 6000N click the 'Set-Up' button. Next input the Wi-Fi password for your wireless network. Then click the 'Next' button.
- (3) During installation the APP will find and upgrade the 6000N Play-Fi settings which may take a few minutes.
- (4) After completing the network setup and upgrading you can set a name for your 6000N Device and use it.

For Apple iOS users:

- (1) Download the Play-Fi APP. Before opening the APP please switch to the Settings - Wi-Fi menu on your smartphone or tablet and select 'PlayFiXDeviceXXXXX' from the options.
- (2) Open the Play-Fi APP and find the 6000N PlayFi Device name. Select it and enter your wireless network password.



- (3) During installation the APP will find and upgrade the 6000N Play-Fi settings which may take a few minutes.
- (4) After completing the network setup and upgrading you can set a name for the 6000N Device and use it.

9: Wi-Fi Connection Setup - 2 Page 11

For PC or Mac users:

If you cannot connect using the DTS Play-Fi APP, or you need to do some high-level option such as setting the static IP configuration, you can setup the Audiolab 6000N Play using a web browser from your Windows PC or a Mac.

Set the 6000N to Standard Setup mode, then follow these steps:

- (1) Connect your computer to the wireless Wi-Fi of the 6000N - it will show as 'PlayFIXDeviceXXXXX' or similar name. After connecting your computer may show 'No Internet Connection' - this is normal.
- (2) Open your Internet Browser and type: 192.168.0.1/index.html in the address bar.
- (3) Click the Enter key or click 'Continue' option in your Internet Browser.
- (4) This will open the Play-Fi configuration.
- (5) Select the 'Set Up' button.

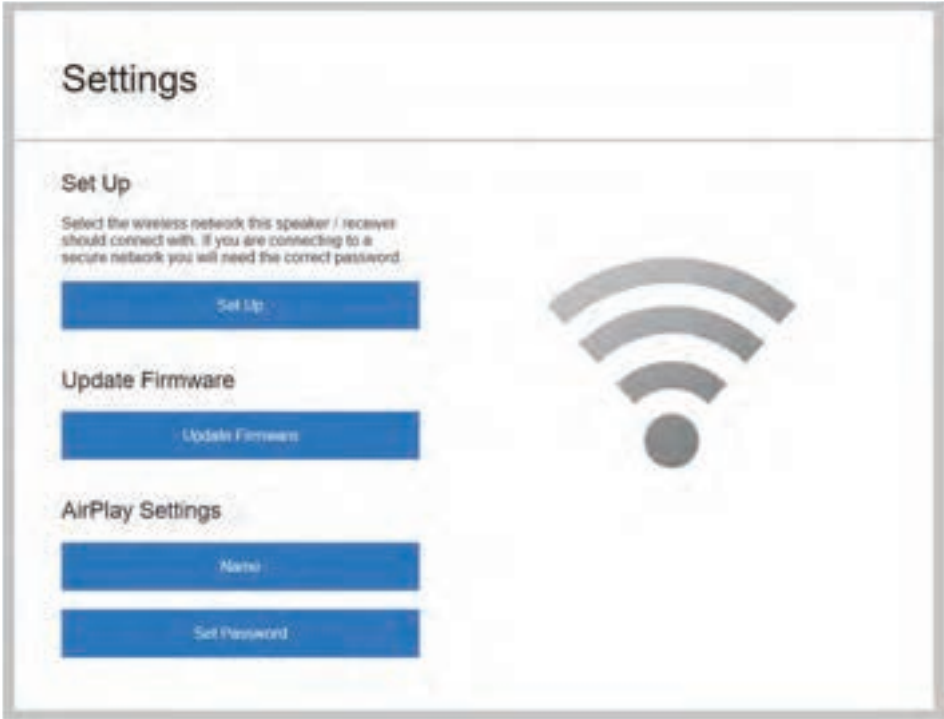
(6) Select your wireless router Wi-Fi network.



(7) Enter the password for your wireless network. Then click the 'NEXT' button.



(8) You can then name your 6000N Device and click 'NEXT'. The Wi-Fi connection will be made and you can use the device.



10: APP Operations - 1 Page 12

Device Selection

The DTS Play-Fi APP allows you to control and direct streaming music to a variety of Devices throughout your home that use the DTS Play-Fi system. You can set each Device to have a unique name. You can also group Devices into an Area, where each Device will play the same music.

To select a Device and Area using the APP, click the '+' icon on the upper right corner of the APP display. Select an Area to add, then select a Device on which to play the music. If you wish to play high-resolution audio files, the icon 'Hi-Res AUDIO' should be selected.

Music Services

DTS Play-Fi supports the world's most popular and exciting streaming music services, so you can enjoy your favorites at home just as easily as you do in the gym. See below for more information of streaming music service platforms. Please feel free to choose one you like. (Note: some streaming music service platforms probably need to be registered.)

Amazon Music

Amazon Prime members can use Amazon's popular music service for free. A growing selection of over 2 million songs is always ad-free and on-demand, with curated playlists, personalized stations and unlimited skips. Upgrade to Prime Music Unlimited, and enjoy 10 million songs, weekly new releases, and more.



Deezer

With 43 million tracks, 100 million playlists, and a presence in 182 countries, Deezer literally covers the globe for its subscribers. Subscriptions start at \$9.99/month, and include ad-free playback and more.



iHeartRadio

iHeartRadio combines access to over 1,500 of the most popular live terrestrial and internet radio stations with unique live events and compelling custom features, like artist radio, personalized radio, and on-demand podcasts for FREE. Their new Plus and All-Access subscriptions allow you to pause, rewind, skip and save live radio content, stream on-demand music, and more.



Internet Radio

DTS Play-Fi has a built-in Internet Radio service that gives you access to thousands of radio stations and podcasts from around the globe. Instantly see your local favorites, or tune into the BBC, ESPN, Radio Disney, the Wall Street Journal, and more. Browsing is a snap, and if you find a station you love, just give it a star and it'll be ready to stream whenever you are. Free, no subscription required.



Juke

With more than 20 million tracks and a dedicated base of music fans, Juke's streaming service includes popular features like on-the-go playlists, new music discovery, and ad-free listening. DTS Play-Fi is the only multi-room audio platform to offer the Juke service.



KKBox

KKBox is Asia's leading streaming music service, with over 30 million tracks from 500 local and major labels, and the most comprehensive collection of Asia-Pop in the world. Featuring both free and premium options, the service also includes mood-based programming and supplemental content including music news, videos, concert updates and more.



On Device Music

DTS Play-Fi puts your mobile music collection at your fingertips, automatically finding and indexing the songs stored on your device. You can browse and stream by album, artist or genre, and even use your existing playlists. DTS Play-Fi supports local files in multiple formats, from MP3 all the way up to premium CD and lossless quality encoding. Free, with no subscription required.



10: APP Operations - 2 Page 13

Media Server

Got a hard drive full of music? Avid digital collectors can access and stream from media servers using DTS Play-Fi. The system automatically discovers and indexes music from DLNA and UPnP servers on your network. You can select and stream files in multiple formats via DTS Play-Fi, including premium tracks encoded at CD quality or even 24-bit/192kHz lossless content. No subscription required.

Napster

Napster integrates the heritage of streaming market pioneer Rhapsody into its premium, ad-free on-demand service. With 30 million tracks, instant playlist creation, and anytime, anywhere access, Napster is justifiably popular on multiple continents with millions of subscribers.

Pandora

Listen free to music you'll love, as Pandora's streaming service evolves with your tastes. Give songs a thumbs up or down, and your stations become more personal the more you listen. Enjoy the service at no charge with ads, upgrade to Pandora Plus for commercial-free streaming, or try Pandora Premium to add on-demand features and premium sound quality to your experience.

Qobuz

Based in France, Qobuz was founded and built around a premium audio quality experience. It boasts 70,000 albums available for streaming at 24/192, with many more streaming at 16/44 CD quality. The service also features in-depth artist profiles and editorial content.

QQMusic

China's largest music streaming service offers tens of millions of tracks and thousands of radio stations to its 400 million monthly active users. With free and premium tiers, and both local and international content, QQ Music is a dominant force in music listening in China.

SiriusXM

With over 150 channels of commercial-free music plus sports, talk, comedy, entertainment, news and more, it's no wonder that Sirius XM is one of the most widely used premium streaming services in North America. It's a snap to go from listening in your car to listening at home with DTS Play-Fi.



SoundMachine

Business never sounded so good! Whether it's in an office or a restaurant, a retailer or a hotel, background music enhances both the customer and the employee experience. Hundreds of stations and millions of songs, including the ability to create artist stations, so you can design the perfect sound for your brand. Fully licensed for business environments.



Spotify

Their motto is "Music for Everyone", and with millions of listeners around the globe, Spotify seems to be onto something. Create and share playlists, or choose from thousands of curated collections. Spotify Premium subscribers can stream directly to any DTS Play-Fi enabled speaker directly from the Spotify App. Available in the US and more than 50 other countries. The Spotify Software is subject to third party licenses found here:

www.spotify.com/connect/third-party-licenses.

Use your phone, tablet or computer as a remote control for Spotify. Go to spotify.com/connect to learn how



Tidal

High Fidelity Music Streaming is Tidal's hallmark. Every track on the service streams in premium audio format, with most in lossless CD quality or above. The service also boasts many exclusive new releases, artist-curated stations and in-depth features designed to complement the music offerings. Available to DTS Play-Fi users in the US and more than 50 other countries.



In addition to the support listed above, it also supports music services such as BBC, ESPN RADIO, HD tracks, NPR, tunein and so on, and there will be more music platforms involved in the development.

DISCLAIMER: Not all music services are available in all regions and countries.



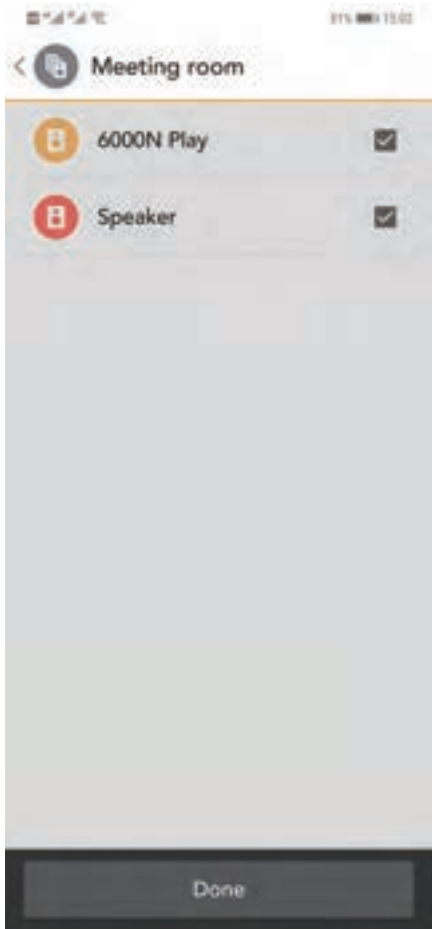
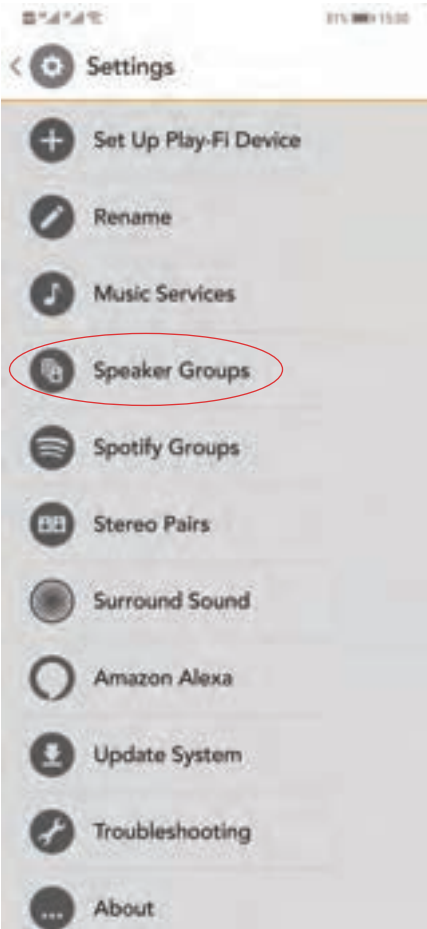
10: APP Operations - 3 Page 14

Speakers Group

To stream music from 6000N Play to multi-room Devices such as DTS Play-Fi enabled Speakers, open the DTS Play-Fi APP, find the Device or Speaker, give it a name and then add it.

To delete the Device or Speaker, just click on the right side of the Device name and then delete.

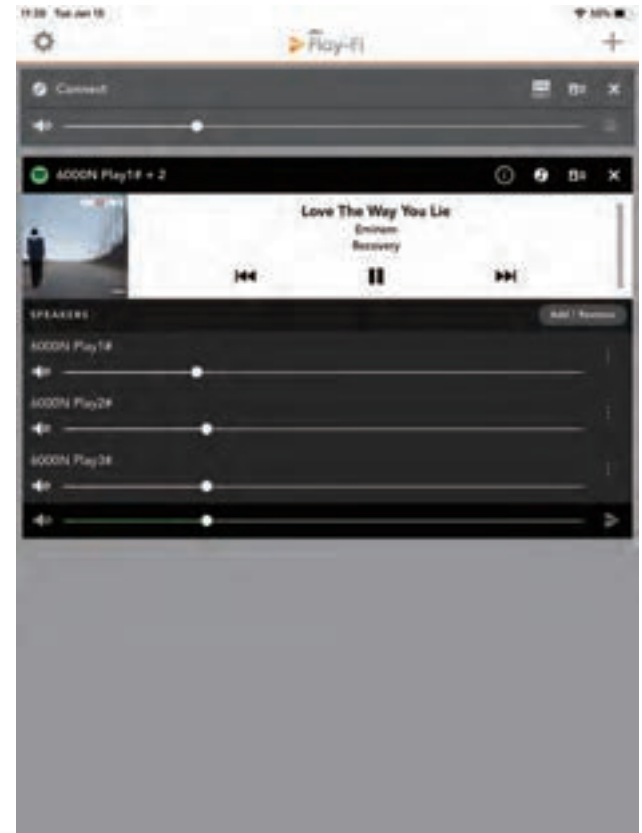
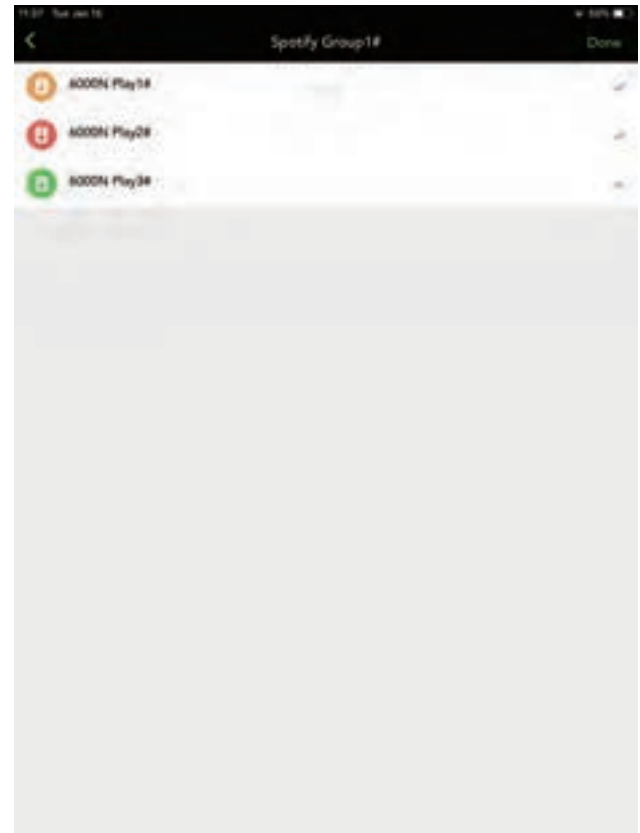
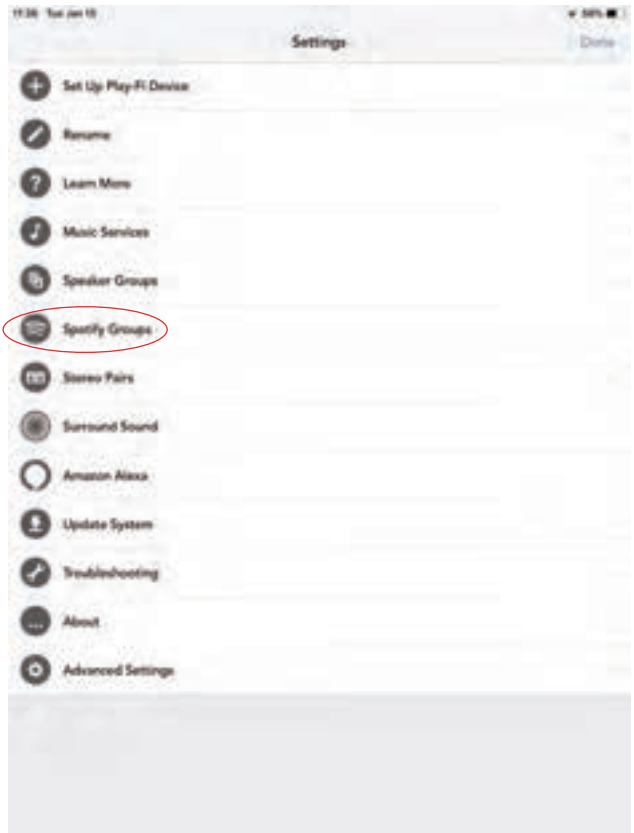
Currently it is not recommended to wirelessly stream Hi-Res audio to speakers if you want stable, uninterrupted playback.



10: APP Operations - 4 Page 15

Spotify Group

Open Set Up in the DTS Play-Fi APP; click the Spotify Group. Create a new group and name for it, then select any DTS Play-Fi enabled products you want in this group (on the right side). Any speakers that can't be joined to a Spotify Group will be greyed out. Once you're satisfied, head to the Spotify app to start streaming.



So far, Audiolab 6000N Play can't support the playing of "Surround Sound". For common problems in utilization and fault diagnosis, you can open the APP settings to find the "Fault diagnosis", then enter the DTS Play-Fi website knowledge base which has detailed information.

If the system is updated, click "Update System" and the process will carry on automatically. Click "About", you can see DTS Play-Fi's APP version and the status of network connection, IP address and versions of the module software and MCU. For 'Advanced Settings' you can choose from various options - the default mode is recommended.

1 1: Warranty Coverage - 1 Page 16

Audiolab warrants its products, subject to the following terms and conditions below, to be free from defects in materials and workmanship.

Online Registration



Scan the QR code using a smart-phone device, for product warranty registration online.

The three (3) year extended warranty is applicable to items purchased from Jan 1st 2021, onwards. Items purchased prior to this date are not eligible for this extended warranty service but are subject to statutory warranty claims and all applicable consumer rights.

To qualify for the extended 3 year warranty, you must register your product within ninety (90) calendar days from the date of purchase. Visit audiolab.co.uk/warranty-registration to complete your online registration. Items not registered online will have a Limited Warranty for one (1) year, or for the period of your country's statutory warranty, whichever is longer.

Warranty can only be offered to products registered with proof of purchase with date, model and details of the authorised dealer clearly stated on the receipt/invoice. Please keep the original receipt/invoice in case it is required for a warranty claim.

This Limited Warranty is non-transferable and is offered exclusively to the original owner.

This Limited Warranty is valid only in the original country of purchase.

Repairs or replacements are provided under this warranty are the exclusive remedy of the consumer. Audiolab shall not be liable for any incidental or consequential damages for breach of any expenses or implied warranty with any product. Except to the extent prohibited by law, this warranty is exclusive and in lieu of all other warranties whatsoever, both expressed and implied, including but not limited to the warrant of merchantability and fitness for practical purpose.

This warranty provides benefits that are additional to and do not affect your statutory consumer rights.

This Limited Warranty offer is subject to correct information being submitted in your application. Incorrect dates or mismatched purchase receipt dates that are outside of the warranty terms will immediately invalidate any warranty claim.

*Please check with your dealer local distributor for further information.

Exclusions

The following items are excluded from the Audiolab warranty:

Normal wear and tear and cosmetic damage (including but not limited to any wear from reasonable use, environmental deterioration or neglect)

Products on which the serial number has been removed, altered or otherwise made illegible.

Products not purchased from an authorised Audiolab dealer.

Products that were not new at the time of original purchase.

Products sold 'as is', 'as seen' or 'with faults'

Product not purchased from an Authorised Dealer/Distributor within the region of the claim (ie parallel imports or grey market products)

Accidental damage or faults caused by commercial use, acts of God, incorrect installation, incorrect connection, incorrect packaging, misuse or careless operation or handling which is not in accordance with the user instructions.

Equipment that has been operated in conjunction with unsuitable, inappropriate or faulty apparatus.

Repairs, alterations or modifications carried out by parties other than Audiolab or its authorised service partners.

Damage in transit that cannot be attributable to the fault of Audiolab, the authorised distributor or dealer (ie. claims otherwise covered by transit insurance.)

Faults relating to abnormal or inappropriate power supply voltage or power surges.

Faults relating to extremities in temperature, exposure to heat, water or other liquids, insects, excessive moisture, sand, chemicals, battery leakage or any other contaminants.

Any force majeure events, including but not limited to any acts of God, fire, lightning, typhoon, storm, earthquake, hurricane, natural disaster, tsunami, flood, war, riot, public disturbance.

Any other causes beyond the reasonable control of either Audiolab and its Authorised Distributor.

Please note items purchased before 1st Jan 2021 are not eligible for the extended warranty claim.

1 1: Warranty Coverage - 2

How to claim

To obtain warranty service please contact the authorised dealer from which you purchased this product and present the limited warranty certificate offered upon registration of your product's extended warranty offer.

Do not dispatch goods without the prior agreement of the dealer distributor or authorised service centre.

If asked to return products for inspection and or repair, please pack carefully preferably in the original carton or packaging affording an equal degree of protection and returned via insured, trackable courier service.

The authorised dealer or distributor will offer full return details and instructions. However, please note if unsuitable packaging is used the warranty may be deemed void due to improper action in return.

Audiolab or the authorised distributor, dealer or service centre may make a charge for the supply of new packaging for the return of the repaired item. Please note, insurance is recommended as goods are returned at the owner's risk. Authorised distributors or service centres cannot be held liable for loss or damage in transit. Insurance and freight charges on the return journey will be paid for by Audiolab, authorised dealer, distributor or service centre if corrective work proves to be necessary.

In the event of 'no-fault found' or 'no repair necessary', the return shipping charge will be the responsibility of the owner.

Repairs

All repairs will be carried out by the appointed distributor (or locally appointed service centre). Repairs handled or processed without authorisation or approval of the appointed representative will be excluded from this limited warranty. Please note, Audiolab is not able to supply parts or replacement items to any other entity than the official distributor or authorised service centre.

Other than the warranty and services set out in this warranty, to the fullest extent permitted by law, Audiolab shall not be liable to you and/or any third party or entity whatsoever for:

- Any loss, damages and/or malfunction caused to any product(s) which is/are connected to any of the products covered by this warranty.
- Any damages, loss and liability, whether direct, indirect, incidental, consequential special, punitive or otherwise, howsoever caused by, arising out of or otherwise, in relation to the installation, delivery, use, service, repair, replacement and/or maintenance of the product;
- Any damages, loss and liability under this warranty in respect of any act, omission, or negligence of any of their technicians, employees, agents, representatives or independent contractors relating to the actual or purported performance of any of the obligations under this warranty.

Service Centre Address

Should a fault occur with your loudspeakers, please pack it correctly, using the original packing, so you can ship it safely. Product for service should be returned to the appointed dealer from whom you purchased the product. If you experience difficulties or there is no Audiolab dealer in your area, contact the Audiolab distributor or the office below.

IAG Service Dept.
13/14 Glebe Road
Huntingdon
Cambridgeshire
PE29 7DL
UK

Tel: +44(0)1480 452561
Email: service@audiolab.co.uk

For information on other authorised service centres worldwide contact Audiolab International, UK.

A worldwide distributors list is available on the Audiolab website: www.audiolab.co.uk

12: Specifications Page 18

Measurement made with 230V power supply

Model	6000N Play
Digital Section:	
Digital Output Level	500 +/- 50mVpp
Output Impedance	75 ohm
Frequency Response	+/-0.01dB (20Hz-20kHz,ref.1kHz)
Maximum Resolution	192kHz/24bit
Digital Output	1 x Coaxial , 1 x Optical
D to A Converter:	
Variable Output Voltage	0 – 2.1V
DAC	ES9018K2M
Frequency Response	+/-0.5dB(20Hz-20kHz,ref.1kHz)
Total Harmonic Distortion (THD)	<0.003% (1kHz @0dBFS , BW=20-20kHz)
Signal-to-noise Ratio (S/N)	>115dB(A-weighted)
Analogue Output Impedance	100 ohm
Standby Power Consumption	<0.5W
Requirements	220V—240V~50/60Hz
(depending on region)	100V—120V~50/60Hz
Dimensions (Unpacked)	445*313*65.5mm (LxWxH)
Dimensions (Packed)	500*445*140mm (LxWxH)
Net Weight	4.9Kg
Gross Weight	6.5Kg



Correct disposal of this product. This marking indicates that this product should not be disposed with other household wastes throughout the EU. To prevent possible harm to the environment or human health from uncontrolled waste disposal, recycle it responsibly to promote the sustainable reuse of material resources. To return your used device, please use the return and collection systems or contact the retailer where the product was purchased. They can take this product for environmental safe recycling.

