

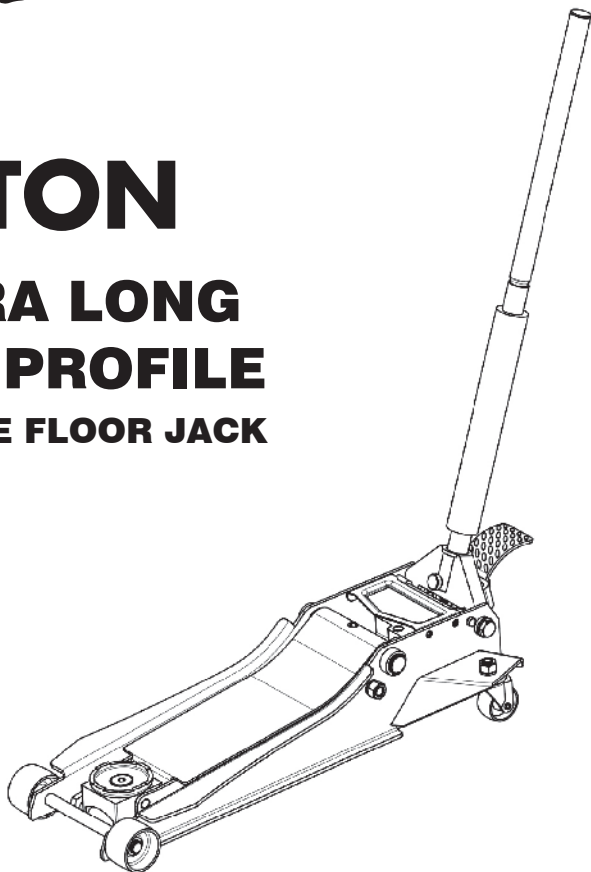


OWNER'S MANUAL
Factory No. TZ815009



2 TON

EXTRA LONG LOW PROFILE SERVICE FLOOR JACK



⚠ WARNING!

If any parts are missing or broken, please contact our customer service department at www.torin-usa.com/support.

Read carefully and understand all ASSEMBLY AND OPERATION INSTRUCTIONS before operating. Failure to follow the safety rules and other basic safety precautions may result in serious personal injury.

DEAR CUSTOMER

Please read these instructions carefully before using the product for the first time and store them for future reference. This product must be operated in accordance with these instructions at all times. Make these instructions for use accessible to all persons who will be working with this product. This applies also when reselling the product. We cannot assume any liability for any accidents or damage that may arise due to non-observance of this guide or the safety instructions contained therein. Any structural modifications to the product will void the manufacturer's warranty!

This product is intended for private use only!

TECHNICAL SPECIFICATIONS

Model	Capacity	Lifting Range Min. (inch)	Lifting Range Max. (inch)	Lifting Range Min. (mm)	Lifting Range Max. (mm)
ATZ815009D	2 TON	2-3/4	24	70	610

INTENDED USE / SAFETY INSTRUCTIONS

Read, study and understand all warnings and operating instructions and consult the vehicle manufacturer's manual prior to use. Do not overload this jack beyond the rated capacity otherwise the jack may become damaged and safety compromised. This jack is intended for use as a lifting device only. This jack must only be used on hard and level surfaces and must be free to roll during lifting and lowering. Always set the vehicle parking brake and ensure that the unlifted wheels of the vehicle are chocked. The vehicle owners manual should be consulted prior to lifting of the vehicle and ascertain the location of the jack points. Some vehicles may require an adapter to properly engage the frame for lifting. Position the jack below the prescribed lift point and make sure that the load will be centrally located on the head cap. The load must be supported immediately by other appropriate means. Support the vehicle only with a minimum of two suitably rated vehicle support stands and remove the hydraulic trolley jack prior to commencement of work on the vehicle. Position the hydraulic jack so that no part of your body will be under the vehicle while it is being lifted. No person shall remain in a vehicle that is being lifted. Never get bodily under or work under a vehicle that is being supported only by a hydraulic jack. Never get into the vehicle or start its engine while it is on the hydraulic jack. Failure to heed these warnings may result in personal injury, death and/or property damage.

WARNING: Lifting of persons prohibited!



General warning sign



Rated capacity:
2 TON
4,000 LBS



Read the manual instruction before using



Do not work under the vehicle when you are using the jack



Work under the vehicle with jack stands



Use the jack on even ground



Use wheel chocks to secure the wheel



Do not overload



Warning about hand injuries

GENERAL USAGE INSTRUCTIONS

Before using the floor jack, conduct a pre-operational check of the equipment including loss of oil, damage or missing accessories. Consult the vehicle manufacturer's manual prior to the lifting of the vehicle.

First time operation:

1. Open the drain valve and insert the enclosed handle (extension) in the pumping arm.
To ensure the oil distributes itself completely, carry out approx. 6 full pumps of the handle.
2. Close the drain valve - the vehicle jack is now ready for use.

Lifting the vehicle:

3. Locate your vehicle on an even, firm surface and secure the vehicle against rolling as specified by the vehicle manufacturer.
4. To ensure safe lifting, position the jack at a 90° angle to the vehicle and under the appropriate jacking point (see the manufacturer's instructions).
5. Insert the handle in the drain valve and close it by rotating clockwise until the limit stop is reached.
6. Insert the handle in the pumping arm and pump the handle until the saddle is in contact with the vehicle.
7. Check again that the jack is seated correctly.
8. Continue pumping the handle until the vehicle has been lifted to the desired height.
Caution: Observe the vehicle carefully during the lifting operation. The jack should move in the direction of the vehicle during lifting. Should this not be the case, there is a strong possibility that the vehicle will slide off the jack.
9. Put the handle out of the pumping arm. (Risk of accident!)
10. Secure the load with suitable jack stands before commencing work on or under the vehicle.
Caution: Working on or under the vehicle without first appropriately securing the raised load is prohibited! (Risk of accident!)
11. After you have finished working on the vehicle, open the drain valve by carefully twisting the jack handle in small increments in a counterclockwise direction until the vehicle begins to move downwards.
12. Once the vehicle is firmly on the ground, the drain valve can be opened again (approx. one half turn) in order to return the lifting arm all the way to the bottom in the starting position.
13. Before lifting the load, check that the drain valve is properly closed.

Storage & care:

15. When the vehicle jack is not in use, the lifting arm should be in the lowest position and the handle in an upright position to protect the precision mechanics from damage. The vehicle jack must be stored in a horizontal position and in a dry location. Ensure the jack remains in its original condition. Do not undertake any modifications to the device.
16. Use only SAE10 (SAE: Society of Automotive Engineers) grade, special-purpose hydraulic oil for the pump. Dispose of all used and spilled oil appropriately.
17. Do not use a high pressure cleaner to clean the jack. All external moving parts, e.g. the foot roller bearings, fastening bolts of the lifting arm, fastening bolts of the lifting arm cylinder and fastening bolts of the pumping arm must be well lubricated regularly every 3 months.
IMPORTANT: Never lubricate or grease the rods of the pump and lifting cylinder.
18. All maintenance and repair work must be performed by a suitably qualified personnel in accordance with the manufacturer's instructions.
19. Caution: Do not use the jack if there are any missing, loose or broken parts!

Modifications:

MODIFICATIONS MUST NOT BE CARRIED OUT OR ACCESSORIES ADDED!

SAFETY INSTRUCTIONS

Read operating Instructions

Study, understand and follow all instructions in this manual before operating the jack. Failure to heed these warnings may result in loss of load, damage to the jack and/or jack failure resulting in personal injury or property damage.

Position the Jack

Position the jack to only lift on the areas of the vehicle specified by the vehicle manufacturer.

Use Support Stands

After lifting the vehicle always support the load with appropriately rated vehicle supports stands before working on the vehicle.

Do Not Overload Jack

Do not overload this jack beyond its rated capacity. Overloading this jack beyond its rated capacity can cause damage to or failure of the jack

Use on Hard Level Surface

This jack is designed only for use on hard level surfaces capable of sustaining the load. Use on other than hard level surfaces can result in jack instability and possible loss of load.

Center Load on Jack Saddle

Center load on jack saddle before lifting vehicle. Off-center loads and loads lifted when the jack is not level can cause loss of load or damage to the jack.

Keep hands and feet clear of the jack hinge mechanism and ground contact area when lowering the load!

WARRANTY NOTICE

This equipment is covered under a 2-year limited warranty when used as recommended. Only those items listed with a Part# are available for purchase. For assistance with the operation or the availability of replacement parts, contact our Parts and Warranty Department at www.torin-usa.com/support. Please have available a copy of your receipt, the model number of the product, serial number, and specific details regarding your question.

Not all equipment components are available for replacement; illustrations provided are a convenient reference of location and position in the assembly sequence.

The manufacturer reserves the rights to make design changes and or improvements to product lines and manuals without notice

WARRANTY INFORMATION

We want to know if you have any concerns with our products. If so, please call toll free for Immediate assistance. For additional web customer support help inquiries visit the Customer Service section at: <http://www.torin-usa.com>, or you can send an email to the following email address for further assistance: service@torin-usa.com.

USER INSTRUCTIONS

This ROAD DAWG 2 Ton Extra Long Low Profile Service Floor Jack is designed to be used with a 98mm diameter head cap and a handle of 1250mm length only.



NOTE: The instructions below must not be carried out while the vehicle jack is In use.
NOTE: The vehicle jack is equipped with a safety valve. It has been configured to allow the vehicle jack to lift loads up to 2 tonnes. The safety valve must not be modified or adjusted in any way!

TROUBLESHOOTING

Problem 1: The lifting arm won't raise when pumping under load.

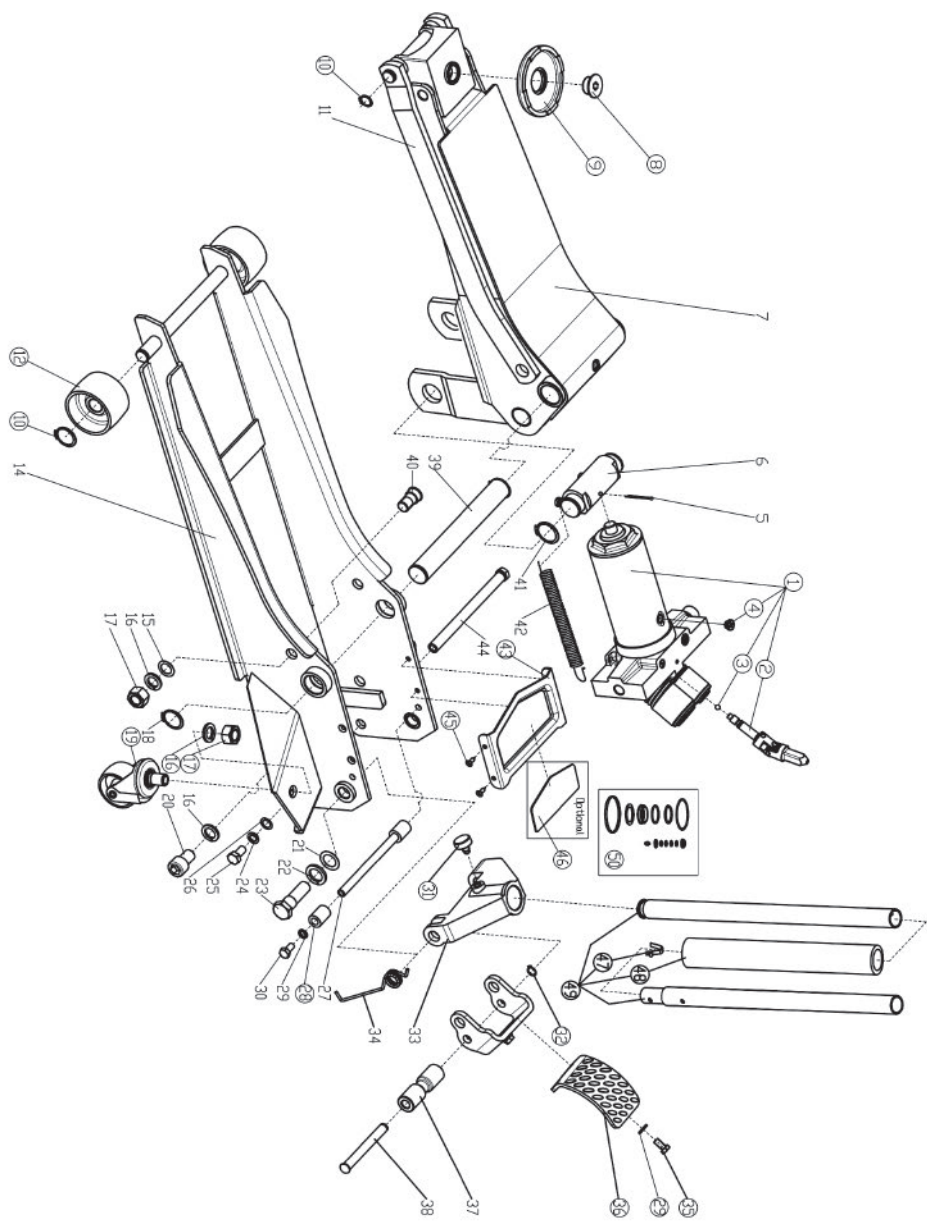
- Check whether the drain valve is fully closed. Close it by rotating the handle clockwise.
- Check the oil level by placing the vehicle jack in a horizontal position.
- Not enough oil. Top up the hydraulic oil and purge the hydraulic system - see also the "Topping up the hydraulic oil" and "Purging" sections.

Problem 2: The lifting arm is sinking under load.

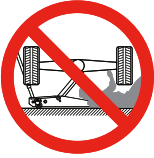
- Follow the instructions provided for "Problem 1". Should this still not eliminate the fault, the vehicle jack needs to be repaired by an authorized repairer.

Problem 3: The lifting arm can't be lowered.

- The tension spring for the lifting arm has unhooked or broken. Rehook the spring or replace the broken spring by an equivalent new spring.
- The vehicle jack presumably needs lubricating. All moving parts must be cleaned and lubricated or greased. **IMPORTANT:** The rods of the pumping and lifting cylinder should never be lubricated or greased.
- Too much oil in the hydraulic system. Screw out the drain valve and drain out the excess oil - see also the "Topping up the hydraulic oil" and "Purging" sections.

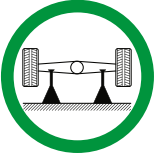


REF#	PART #	DESCRIPTION	QTY
1	TZ815009A (TYPE D).1	Power Unit Assembly	1
2	T830008.5-1	Universal Joint Assembly	1
3	GB/T 308	Steel Ball Bearing ø6mm	1
4	T815016L. 3-13 (ASM)	Oil Plug	1
5		Cotter Pin ø4x45mm	1
6		Coupling Connector	1
7		Lifting Arm Assembly	1
8	T830003L-16	Pin for Saddle	1
9	TZ830026W-GS-1	Saddle	1
10	GB/T 894.1	C-Clip ø18mm	4
11		Connected Bar	2
12	T830018-1	Front Wheel	2
13			
14		Frame Assembly	1
15		Washer M16	2
16	GB/T 859	Spring Washer M16	4
17	GB/T 6170	Nut M16	2
18		C-Clip ø28mm	2
19	T83508.6	Rear Caster Assembly M16	2
20		Socket Head Cap Screw M16 x 25mm	2
21		Washer M18	2
22		Spring Washer M18	2
23		Shoulder Bolt M18 x 65mm	2
24		Spring Washer M10	2
25		Hex Head Screw M10 x 16mm	2
26		Washer M10	2
27		Position Shaft for Handle Socket	1
28	T94004-7	Plastic Sleeve	2
29	GB/T 894.1	Spring Washer 8	4
30		Hex Head screw M8 x 20mm	2
31	T830008.2-4	Handle Socket Screw M10 x 23.5mm	1
32	GB/T 894.1	C-Clip ø12mm Diameter	1
33		Handle Socket	1
34		Torsion Spring	1
35	GB/T 5783	Hex Head Screw M8 x 16mm	2
36	T830012HTBL. 2-1	Pedal	1
37	TZ830009TB. 1-3	Contact Roller	1
38	T825011BCL. 1-2	Pin for Roller	1
39		Supporting Shaft	1
40		Connecting Bar Pintle	2
41		C-Clip ø 30mm Diameter	2
42		Return Spring	2
43	T830008-5	Cover Plate	1
44		Back Shaft	1
45	GB/T 70.3	Hex Drive Flat Head Screw M6 x 16mm	4
46	T830008-10	Magnetic Spacer	1
47	T83508. 5-4	Handle Lock Pin	1
48	T83508-9	Flexible Protective Pipe	1
49	T830018Z.2a	Handle Assembly	1
50	T830008.MF	Seal Kit	1



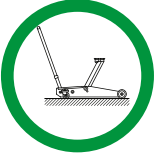
DEATH OR INJURY FROM INCORRECT USE

READ, STUDY AND UNDERSTAND ALL WARNINGS AND OPERATING INSTRUCTIONS PRIOR TO USE. FAILURE TO HEED THESE WARNINGS MAY RESULT IN PERSONAL INJURY, DEATH AND/OR PROPERTY DAMAGE.



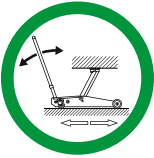
USE A MINIMUM OF TWO SUPPORT STANDS

DO NOT OVERLOAD THIS JACK BEYOND THE RATED CAPACITY. THE LOAD MUST BE SUPPORTED IMMEDIATELY BY OTHER APPROPRIATE MEANS.



ONLY FOR USE ON FLAT HARD LEVEL SURFACES

THIS JACK MUST ONLY BE USED ON HARD AND LEVEL SURFACES AS A LIFTING DEVICE ONLY.



FREE TO ROLL DURING LIFTING AND LOWERING

THIS JACK MUST BE FREE TO ROLL DURING LIFTING AND LOWERING. CENTER LOAD ON SADDLE PRIOR TO LIFTING.



Torin Inc.
4355 E. Brickell Street Ontario, CA USA
www.torin-usa.com
Made in China

