

12,6"; 10,1"; 8"

CaseDisplay

www.casedisplay.eu

1.	Choose Display Placement	5
2.	Connect and SET-UP the Display	7
2.1	Connecting to PC and Changing Displays OSD Language	7
2.2	Settings In Windows	7
3.	Using the Display as Sensor panel	8
4.	Using the Display with Wallpaper Engine	11
5.	Specifications	11

Thank you for your purchase!

Please try to read through the manual as it might contain useful information for you to properly set-up the display.

There are several brackets included within this set and some of these are multifunctional.

Sensorpanels can be found on Aida64 forums in "Share your SensorPanel" topic.

NB! The Aida64 license is not included with the hardware.

Included in the set:

- 1x LCD display with case;
- 1x Vertical stand support bracket (*figure 1.*);
- 1x Horizontal stand support bracket (*figure 2.*);
- 1x Radiator/fan bracket (*figure 3.*);
- 1x Fan bracket (*figure 4.*) ONLY with 8" screen.



Figure 1.



Figure 2.



Figure 3.



Figure 4.

1. Choose Display Placement

Decide how you want to place your new display, here are the options:

- 1) Place it on the table beside the main screen in a vertical position – then you will need the vertical stand bracket (*figure 1.*). When placing it on the table make sure to screw the bracket onto the frame with the angled side downwards (*figure 5.*), this will support the screen. If you feel that extra support is needed (cat might push it over etc.) use the double-sided tape on the bracket side which will be in contact with the desk. NB! Make sure to clean the surfaces before using double sided tape.
- 2) Place it inside the PC case in vertical position – you will need the vertical stand bracket (*figure 1.*). When placing the screen in the PC case make sure to screw the bracket onto the frame with flat surface downwards (*figure 4.*), this will support the screen. Extra support definitely is needed, please use double sided tape on the bracket side which will be in contact with the PC case. NB! Make sure to clean the surfaces before using double sided tape.
- 3) Place it on the desk beside/below the main screen in horizontal position – It is recommended to use the vertical stand bracket for extra support. Screw the vertical bracket onto frame as shown on *figure 5.* If you feel that extra support is needed (cat might push it over etc.) use the double-sided tape on the bracket side which will be in contact with the desk. NB! Make sure to clean the surfaces before using double sided tape.
- 4) Place it inside the PC case in a horizontal position – you will need the vertical stand bracket (*figure 1.*). Screw the vertical bracket onto frame as shown of *figure 6.* This is optional, but you can turn the horizontal stand support around so there is no angle. If you feel that extra support is needed (you move the case a lot etc.) use double sided tape on the bracket side which will be in contact with the PC case. NB! Make sure to clean the surfaces before using double sided tape.
- 5) Place it inside the PC case fixed onto radiator or fan and aligned with side panel – you will need the radiator/fan bracket (*figure 3.*). Remove the vertical stand bracket and replace horizontal stand bracket with radiator/fan bracket as shown on (*figure 6.*).
- 6) Place it inside the PC case fixed onto radiator or fan and aligned with the fan – you will need the fan bracket (*figure 4.*). Remove the vertical stand bracket and replace horizontal stand bracket with fan bracket as shown on (*figure 7.*).



Figure 4.



Figure 5.



Figure 6.



Figure 7.

2. Connect and SET-UP the Display

The LCD secondary screen needs to be connected to the HDMI port x1 of the graphics card.

If the number of host ports is insufficient, you need to purchase a suitable adapter cable, such as "DisplayPort male to HDMI female".

Display buttons:

PWR – Turn display on/off.

MN – Opens display menu. Used as back button in navigation.

UP – Move up in menu.

DN – Move down in menu.

ENT – Confirm selection.

2.1 Connecting to PC and Changing Displays OSD Language

- Connect HDMI to desired/available HDMI output of your GPU (*figure 8.*);
- Connect USB power connector into free slot on your motherboard I/O USB slot;
- (Only on 12,6" and 10") If the screen doesn't turn on press the PWR button;
- To change display menu language, navigate as follows:
 - Press MN button;
 - Navigate to "OSD", press MN;
 - Press MN again, choose desired language and press MN to confirm selection.

2.2 Settings In Windows

Before using the secondary screen, you need to use the primary monitor to adjust the system settings. After connecting the secondary screen cable, set the primary monitor of your desktop as the "primary monitor" in the system according to the following steps:

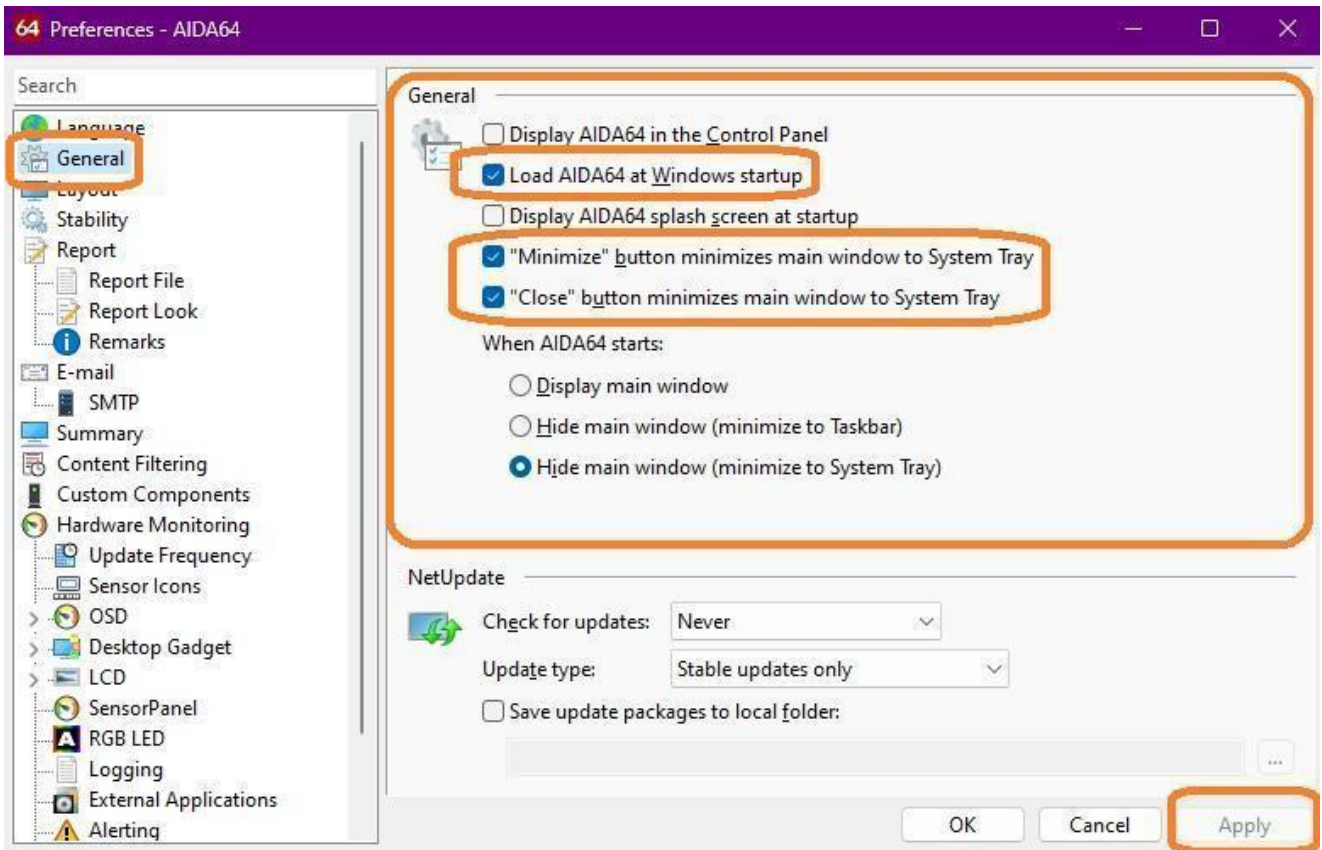
1. Vertical to horizontal display settings for the secondary screen: right-click the desktop of the main screen to pop-up a menu, click "Display settings" - "Identify", select the icon according to number on the secondary screen, slide down the menu, and change the display orientation as desired "Portrait" or "Landscape". If necessary, use "Portrait (flipped)" or "Landscape (flipped)" setting. After the screen is displayed correctly, check the zoom setting of the secondary screen and adjust it to 100%.
2. Select the secondary screen icon in the settings menu, this can be dragged around the main screen for positioning, which is usually consistent with the actual position of the main/secondary screen. After the adjustment is done, click "Apply".
3. Make sure that the setting "Extend these displays" is chosen for multi-display mode, and "Make this my main display" for the main screen is selected.
4. Right-click on the taskbar at the bottom of the main screen desktop, select "Taskbar settings" from the pop-up menu, scroll down to expand "Taskbar behaviors", uncheck the "Show my taskbar on all displays" option, and confirm that the taskbar below the secondary screen has disappeared.

3. Using the Display as Sensor panel

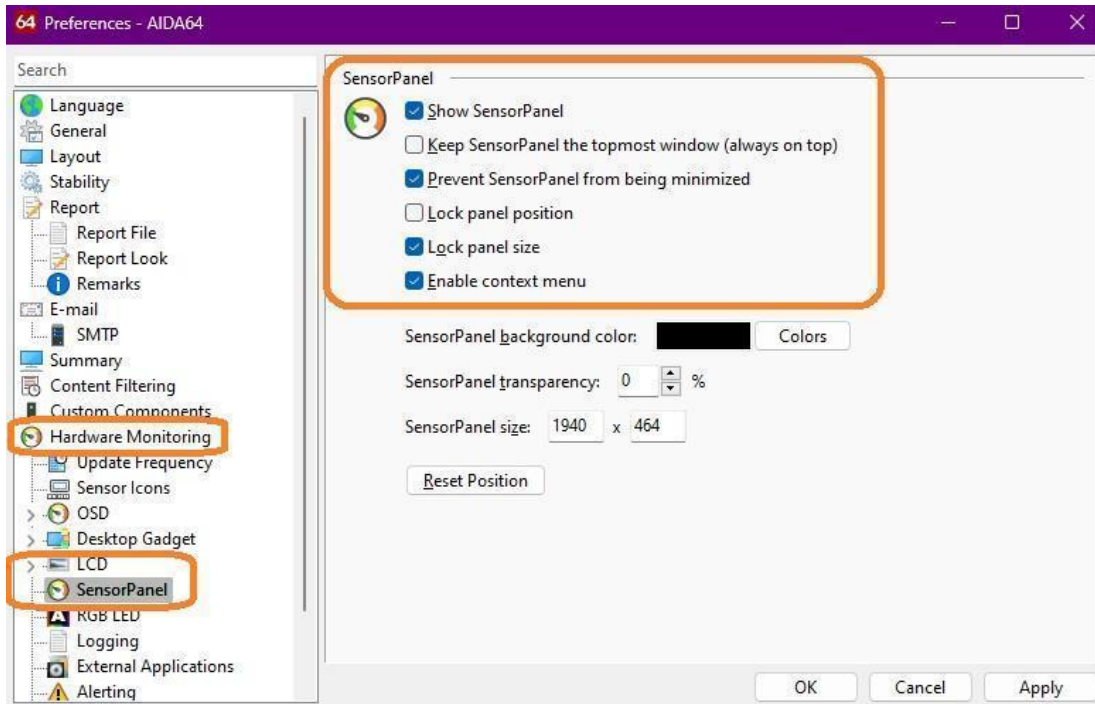
There are several applications that allow to get the readings of PC components onto customized sensor panel. Most popular and with active community is AIDA64. There are many available ready to use user created panels that can be found at Aida64 forums "Share your SensorPanel" topic.

NB! To make customized panels and/or edit parameters of available panels you must own AIDA64 Extreme license.

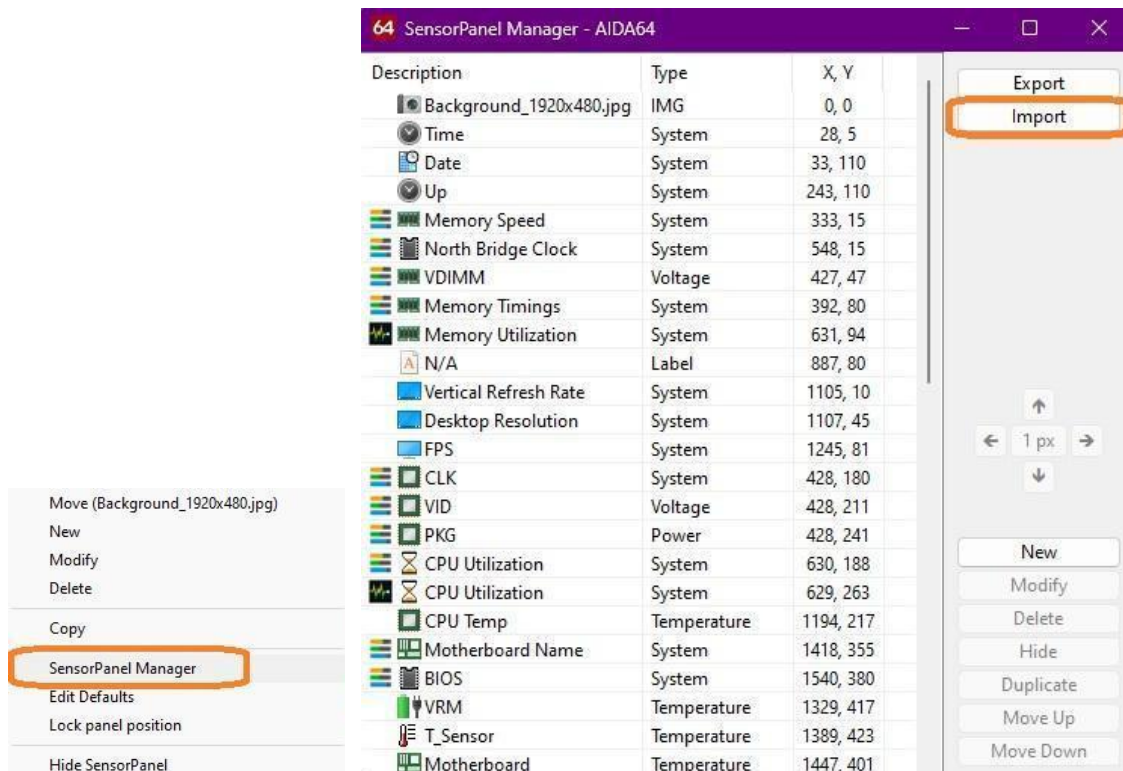
1. In the "File" - "Preferences" - "General" settings, check the following items, and click "Apply":



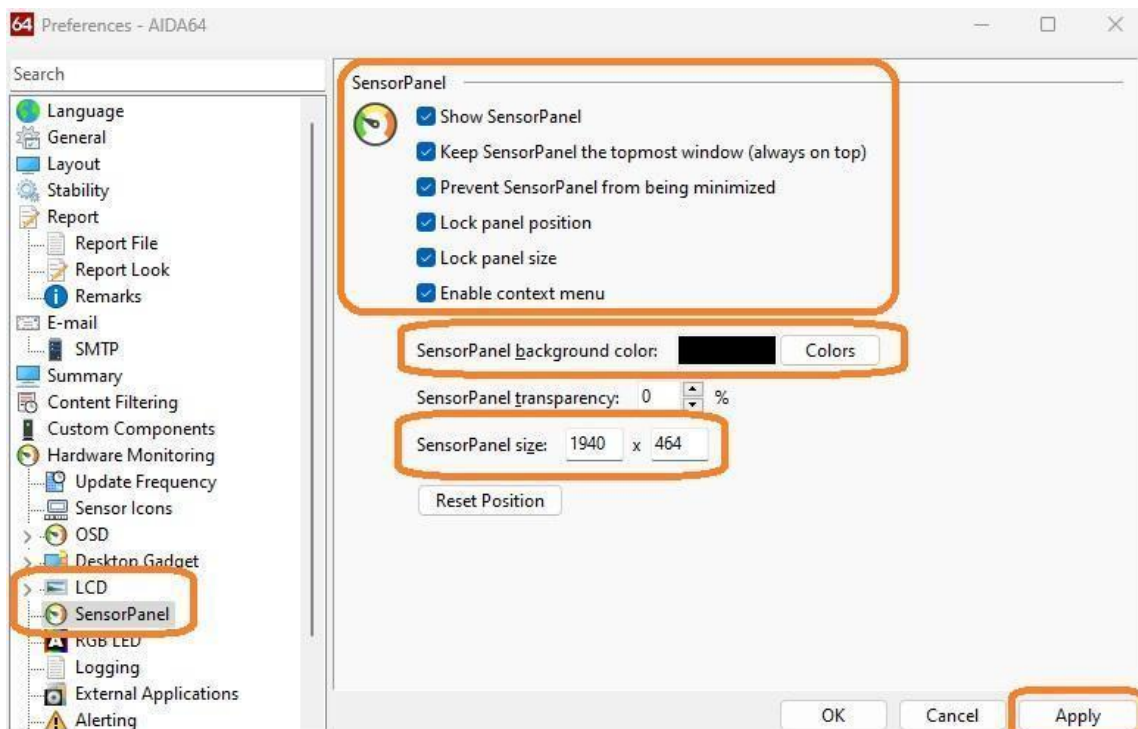
- In "Hardware Monitoring" - "SensorPanel" setting, check the following items and click "Apply":



- In the pop-up monitoring initial interface, right-click the pop-up menu, select "SensorPanel Manager", select "Import", select the downloaded configuration file with the suffix "xxxxxx.sensorpanel", and select "Open"->"Yes".



4. Under different display (main screen) resolutions/scaling ratios, the icons and texts of the monitoring interface may be displayed incorrectly. One possible adjustment method is to open the AIDA64 installation directory, the default installation directory is "C:\Program Files (x86)\FinalWire\AIDA64 Extreme".
 - a. Right-click the icon of the main program "aida64.exe".
 - b. Select "Properties"->"Compatibility"->"Change settings for all users"->"Change high DPI settings".
 - c. Check "Override high DPI scaling behavior" in the pop-up menu.
 - d. Scaling performed by:" - Select "System (Enhanced)".
 - e. "Apply" the modified settings.
 - f. Right-click the AIDA64 program icon in the lower right corner of the desktop, select "Exit" and restart the program.
5. Select and drag the configured monitoring interface to the secondary screen with the left mouse button and align it with the edge of the display area of the secondary screen. Note that when the main display is running with high resolution such as 2K/4K the mouse cannot be adaptively reduced when moving the monitoring interface to the secondary screen. Please minimize all the interfaces of the AIDA64 software first, and then perform the drag operation.
6. In the main interface of AIDA64 Extreme software "File" - "Preferences" - "Hardware Monitoring" - "SensorPanel" settings, check the following items and click "Apply".
 - a. This option is selected according to personal usage habits, "Keep SensorPanel the topmost window (always on top)".
 - b. Lock panel position is recommended.
7. When the loaded sensor panel is not exactly the size of the screen it can be modified by changing "SensorPanel size" values according to screen resolution. The extra filling will be filled with "SensorPanel background color".



4. Using the Display with Wallpaper Engine

1. You need to have Wallpaper Engine software installed on your PC from STEAM platform. STEAM platform official website address is: <https://store.steampowered.com/>
2. Start the software, in the pop-up "Choose Display" setting interface, select the secondary screen or the main screen you want to set wallpaper, and then click "Change Wallpaper".
3. Choose your favorite wallpaper and click "Subscribe" on the right.
4. In the setting interface of Wallpaper Engine, you can adjust the display logic/display quality and if needed then reduce the consumption of system resources, this setting is meant for low performance systems.
5. Setup is complete.

5. Specifications

12,6" CaseDisplay:

Dimesions with all brackets, WxDxH (without brackets)	332x104x65mm (332x104x17mm)
Net weight (gross weight)	400g (700g)
Screen size, active area	309x83mm
Screen resolution	1920x515px
Panel type	IPS, dimmable
Buttons	Power, Menu, Up, Down, Enter
Connection, Video	HDMI
Connection, Power	USB (5V)
Included in the package	HDMI & USB cable (2m), radiator bracket, vertical and horizontal bracket, hex key with handle. Radiator or fan screws are not included .

10" CaseDisplay:

Dimesions with all brackets, WxDxH (without brackets)	236x156x40mm (236x156x 16mm)
Net weight (gross weight)	350g (650g)
Screen size, active area	218x137mm
Screen resolution	2560x1600
Panel type	IPS, dimmable
Buttons	Power, Menu, Up, Down, Enter
Connection, Video	HDMI or USB-C
Connection, Power	USB (5V)
Included in the package	HDMI & USB cable or USB-C (2m), radiator bracket, vertical and horizontal bracket, hex key with handle. Radiator or fan screws are not included .

8" CaseDisplay:

Dimesions with all brackets, WxDxH (without brackets)	190x121x48mm (190x121x14mm)
Net weight (gross weight)	230g (430g)
Screen size, active area	172x107mm
Screen resolution	1280x800px
Panel type	IPS, dimmable
Connection, Video	HDMI
Connection, Power	USB (5V)
Included in the package	HDMI & USB cable (2m), radiator bracket, vertical and horizontal bracket, hex key with handle. Radiator or fan screws are not included .