

A AQUA MUNIT®



SIGNATURE SPA

Signature Series Spas

770

Bradford stainless steel spas are the perfect combination of beauty and durability. Each spa is carefully handcrafted, fusing stainless steel and sophisticated tile inlays to create the most elegant and unique hot tubs in the world.



Tile trim finish has a timeless, modern appeal that is a hallmark of the Bradford Signature Series Spas.



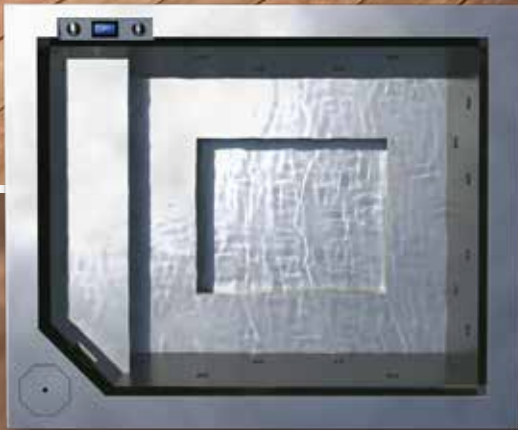
Unique to Bradford Spas is the stainless steel collection port. This reduces the number of visible fittings and covers in the spa footwell.

770 :: 2133 x 2133 mm

- Seats 4-6 adults
- 762 mm water depth
- Tile trim finish or all stainless steel finish
- Frame mounted or remote equipment pack, with WiFi enabled control
- In-spa controls for convenient access, providing obstruction free surroundings
- 16 High-output stainless steel jets
- 351 kg dry weight / 1637 kg with water (frame mounted equipment)
- 273 kg dry weight / 1559 kg with water (shell only)
- **All Bradford Signature Series Spas** are available with optional skirting configurations

Signature Series Spas
786

With an industry leading 25-year warranty against corrosion of the spa shell, 5-year warranty on tile adhesion, and a 1-year or 3-year warranty on the spa equipment, Bradford hot tubs are an affirmation of American-made quality and durability.



Open, unobstructed bench seating allows all bathers freedom of movement to find their perfect location.



Only Bradford spa jets are 100% stainless steel construction and fully-welded into the spa walls.

786 :: 2133 x 2590 mm

- Seats 6-8 adults
- 762 mm water depth
- Tile trim finish or all stainless steel finish
- Frame mounted or remote equipment pack, with WiFi enabled control
- In-spa controls for convenient access, providing obstruction free surroundings
- 16 High-output stainless steel jets
- 433 kg dry weight / 2155 kg with water (frame mounted equipment)
- 355 kg dry weight / 2077 kg with water (shell only)
- **All Bradford Signature Series Spas** are available with optional skirting configurations

Signature Series Spas

797x

with Integral AutoCover

Bradford spas utilize advanced equipment features such as EcoMaster UV-C / Advanced Oxidation Processing, delivering vastly improved water quality. When combined with exceptional warranties and stunning finishes, our stainless steel spas will retain their beauty for many years to come.



The top lip of the spa and the auto cover tray are engineered to accept decking or coping materials for the finished installation.

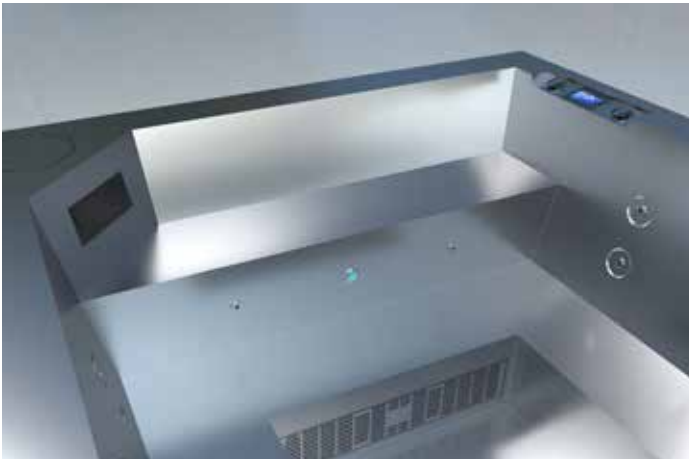


Leading edge bar and auto cover on an all stainless steel spa. Custom wood top lip by owner.

797x 2133 x 2921 mm Incl. AutoCover

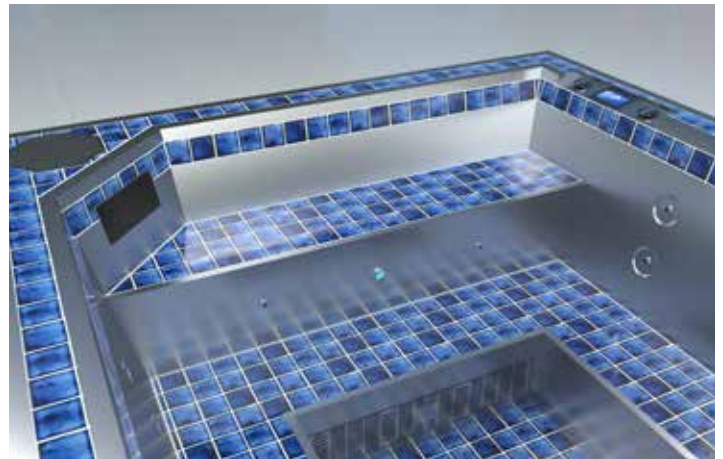
- Automatic cover included
- Seats 6-8 Adults
- 762 mm Water depth
- Tile trim finish or all stainless steel finish
- Frame mounted or remote equipment pack, with WiFi enabled control
- In-spa controls for convenient access, providing obstruction free surroundings
- 16 High-output stainless steel jets
- 555 kg dry weight / 2106 kg with water (frame mounted equipment)
- 464 kg dry weight / 2015 kg with water (shell only)
- **All Bradford Signature Series Spas are available with optional skirting configurations**

Signature Series Spas **FINISH OPTIONS**



ALL STAINLESS STEEL

All interior surfaces are finished in a non-directional buffed stainless steel. A modern and clean aesthetic within any setting or decor.



TILE TRIM

Spa floor, bench seats, step, waterline & top lip are finished in tile. Choose from a select offering of exciting new colors, patterns and tile sizes.

Signature Series Spas **INSTALLATION**

Even though a Bradford Signature Spa can be installed almost anywhere, there are 3 common applications.

- **In-Ground** (*below left*)
- **Partial Recess** (*middle*)
- **Above Ground** (*far right*)

The spa requires a level, load bearing surface on which to sit. This could be concrete slab/pavers, engineered wooden deck beams or metal frames. If the spa equipment is frame mounted, a means of access should be considered when deciding on an installation version. The spa should be enclosed to achieve full insulation qualities.



Signature Series Spas **EQUIPMENT - Frame Mounted or Remote**

FRAME MOUNTED

All equipment is mounted within the spa shell footprint onto the structural members of the vessel frame.

REMOTE EQUIPMENT

The equipment is set and installed on a separate platform, which in turn can be located up to 15 meter away from the spa.

When choosing the Remote Equipment option, interconnecting plumbing is required between the spa and the equipment itself. Additionally with some equipment configurations, a wall mounted control system is utilized.

BRADFORD HOME Since 1982, Bradford Products has been the premier manufacturer of the world's finest stainless steel pools, spas and water features. Bradford's luxury creations are the centerpiece of hotels, residences and commercial facilities around the world.

As the indisputable authority in stainless steel spas and aquatic fabrication, Bradford has the expertise and capabilities to bring virtually any vision to life.



A AQUA MUNIT

www.aquamunit.com | info@aquamunit.com