

Pathrider® 130 XL

OUTSTANDING OUTDOOR
PERFORMANCE WITH
LUXURIOUS FEATURES

PATHRIDER® 130 XL

The **Pathrider® 130 XL** features a powerful drivetrain and large 33 cm (13") pneumatic wheels to handle rugged outdoor terrain. Luxury touches like a wraparound easy drive tiller, low-profile non-marking tyres, seat post suspension for a smoother ride and an LED kerb light blend seamlessly giving the Pathrider 130 XL a sleek, sporty style.



Perth Mobility Scooters
are authorized dealers of

Pride[®]
Mobility Products
Australia Pty. Ltd.

— LIVE YOUR BEST[™] —

Phone (08) 9445 2755
sales@perthmobilityscooters.com.au
www.perthmobilityscooters.com.au

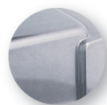
Pathrider® 130 XL

Weight capacity:	158.75 kg (350 lbs.)
Maximum speed ¹ :	Up to 12.4 km/h (7.7 mph)
Ground clearance ² :	11.4 cm (4.5")
Turning radius ² :	167.6 cm (66")
Overall length ² :	135.9 cm (53.5")
Overall width ² :	63.5 cm (25")
Front tyres:	10 cm x 33 cm (4" x 13") pneumatic
Rear tyres:	10 cm x 33 cm (4" x 13") pneumatic
Seat-to-deck:	46 cm (18")
Seat-to-ground:	63 cm - 67 cm (25" - 26")
Suspension:	Front & rear
Range per charge ^{1,4} :	Up to 24.99 km (15.53 miles)
Maximum obstacle climbing ability:	12 cm (4.72")
Total weight without batteries ^{2,5} :	101.1 kg (223 lbs.)
Heaviest piece when disassembled:	42.9 kg (94.5 lbs.) (front section)
Standard seating:	Type: CRS Deluxe Weight: 22.5 kg (49.5 lbs.) Material: Black Vinyl Dimensions: width - 45 cm (18") (overall width) depth - 45 cm (18") (effective depth) height - 47.6 cm (18.75")
Drive system:	Rear-wheel drive, sealed transaxle, 24-volt DC motor
Dual braking system:	Regenerative and electromechanical
Battery requirements ³ :	Two 12-volt, deep cycle Size: 55 AH (standard) Weight ⁶ : 55 AH: 16.6 kg (36.5 lbs.) each
Battery charger:	5-amp, off-board
Warranty:	2-year limited

Colours:



Candy Apple Red



Mercury Silver

¹ Varies with user weight, terrain type, battery amp-hour (AH), battery charge, battery condition and tyre condition. This specification can be subject to a variance of (+ or -) 10%.

² Due to manufacturing tolerances and continual product improvement, this specification can be subject to a variance of (+ or - 3%).

³ AGM or gel cell type required.

⁴ Tested in accordance with ANSI/RESNA, WC Vol2, section 4 & ISO 7176-4 standards. Results derived from theoretical calculations based on battery specifications and drive system performance test conducted at maximum weight capacity.

⁵ Includes standard seat.

⁶ Battery weight may vary based on manufacturer.

NOTE: This product conforms to all applicable ANSI/RESNA testing requirements and ISO 7176 series EN12184 standards. All specifications subject to change without notice.

The information contained herein is correct at the time of publication; due to Pride's commitment to constant improvement and development, we reserve the right to alter specifications without prior notice.

Theoretical range is calculated under test conditions in accordance with European standards. Actual range in normal use will depend on many factors, including the condition of the vehicle and its batteries, the weight of the driver, correct tyre pressures, ambient temperature, and the gradient and surface of the road or pavement.

Features

- Large 33 cm (13") pneumatic tyres for excellent outdoor performance
- Full lighting package including directional signals and angle-adjustable, dual bulb lower headlight
- Seat post suspension for a smoother ride
- Easy drive tiller with wraparound handles
- Front basket standard
- Easily accessible tie down points (for transport of unoccupied scooter)
- Rearview mirror standard

Options

- Rear basket
- Safety flag
- Walker holder
- Durable weather cover