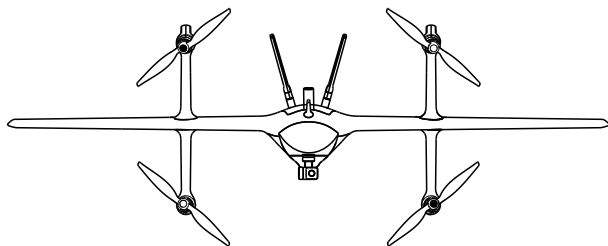


Swan-K1 **Enterprise**

快速入门指南

Quick Start Guide

V1.3 2023.05

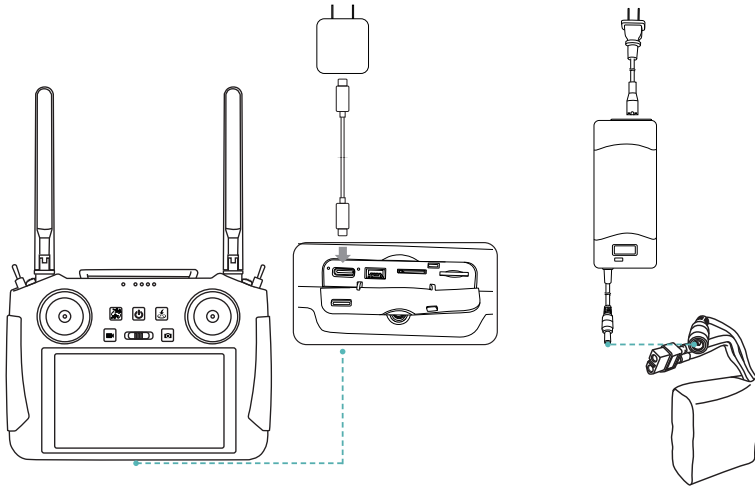


HEQ

Contents

Charge	2
Assembly	2
Power on / off	4
Button Introduction	4
Control the gimbal	5
Entering into position mode	5
Aircraft Calibration	6
Control aircraft	8
Install SD card	11
Specifications	12

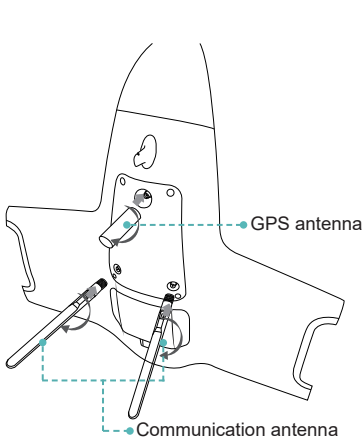
Charging



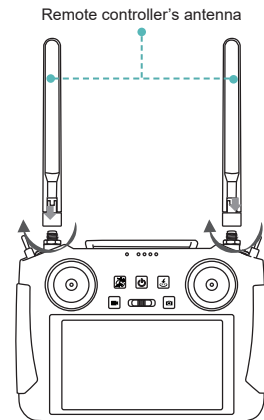
When charging the remote control, please make sure that the remote control is turned off and charged with the original charger.

Please use the original charger when charging for battery.

Install the antennas



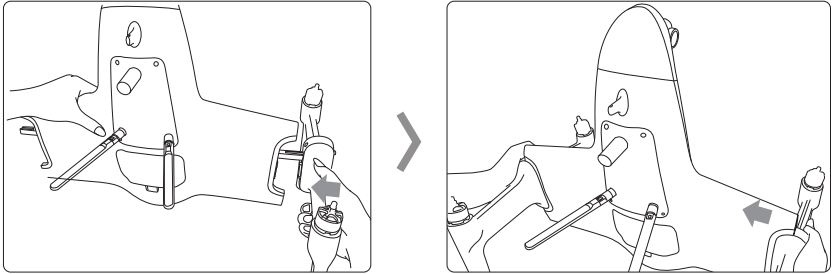
Be sure to install the antenna before powering on the aircraft, and then turn on the remote control.



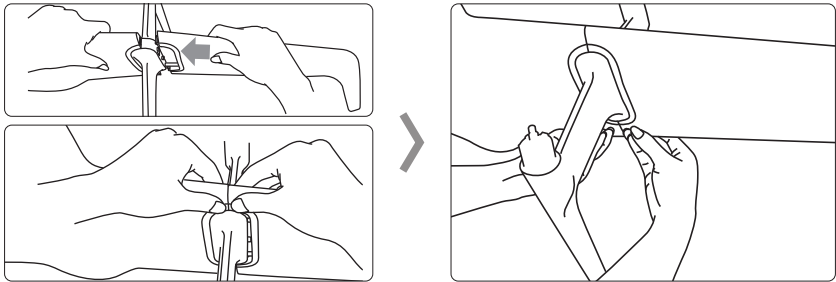
The remote control antenna can be used in common with the aircraft communication antenna.

Assembling the drone

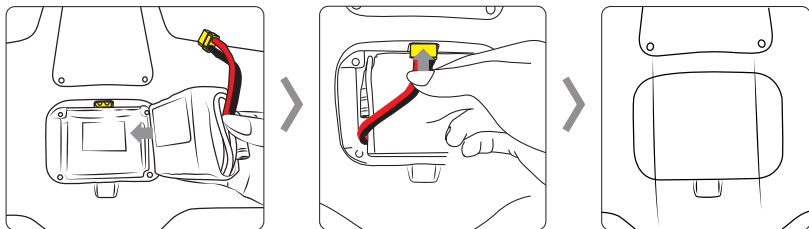
Assemble the arms



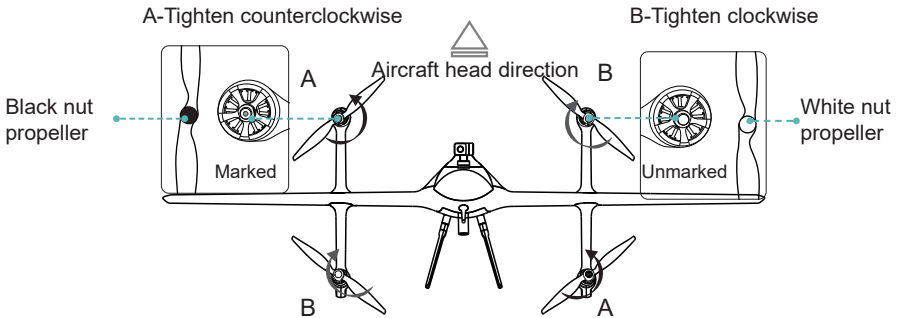
Assemble the wings



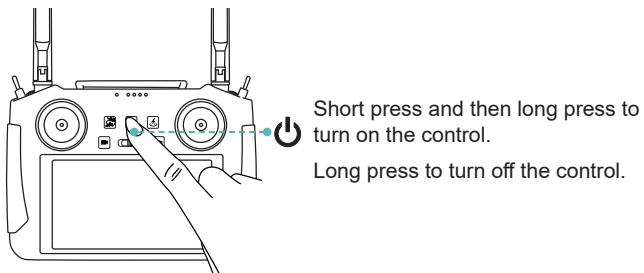
Installing the battery



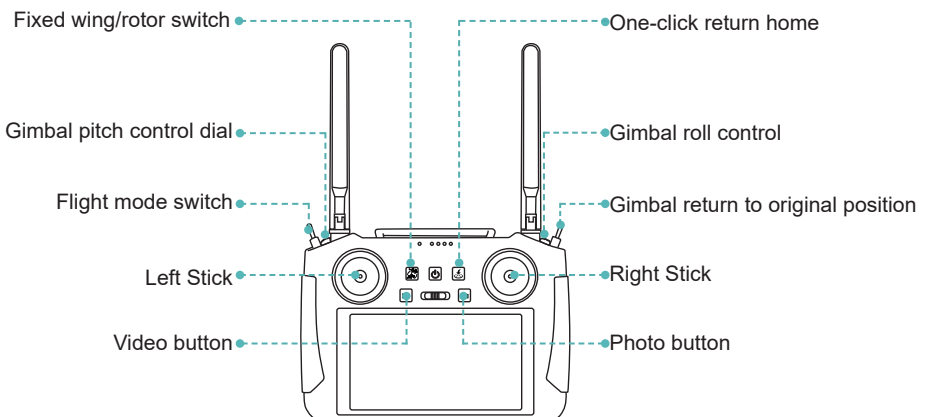
Installing the Propellers



Power on/off



Button Introduction

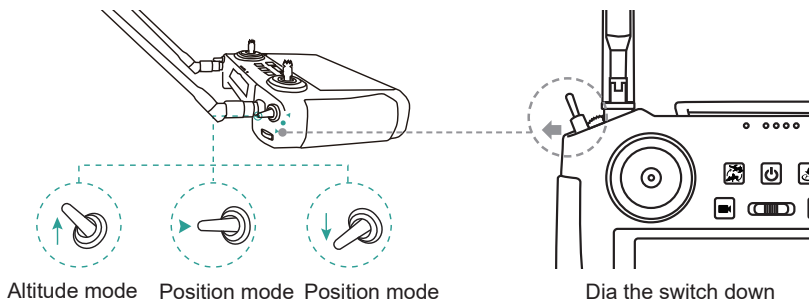


Control the gimbal

		<p>Gimbal pitch control dial</p>
		<p>Gimbal heading control</p>
		<p>Gimbal return to original position</p>

Entering into position mode

In an open outdoor environment, after the remote control is turned on, enter the HEQ FLY, wait for the GPS to search for satellites and move the flight mode switch lever down to enter the position mode.

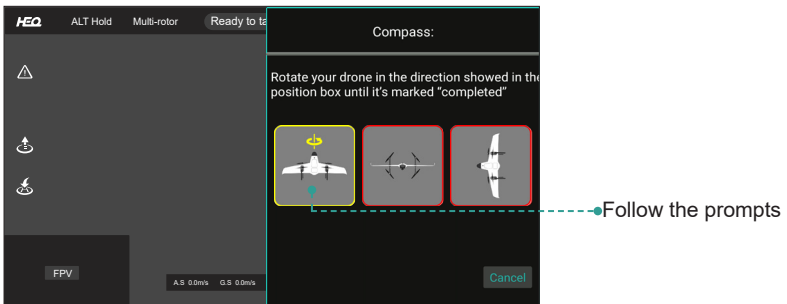
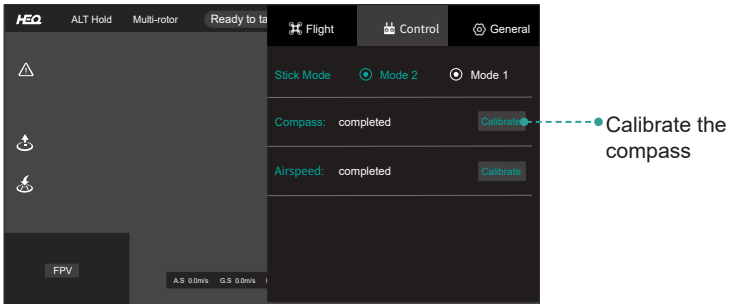


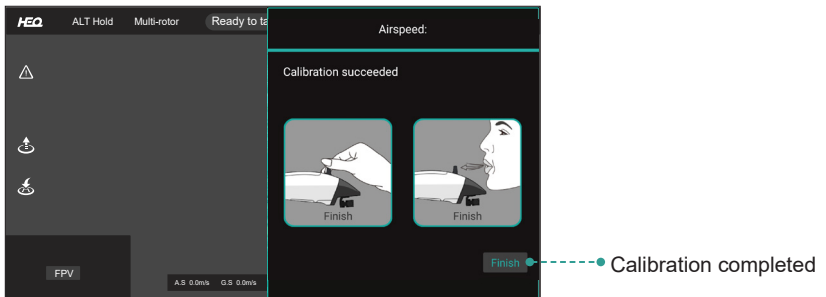
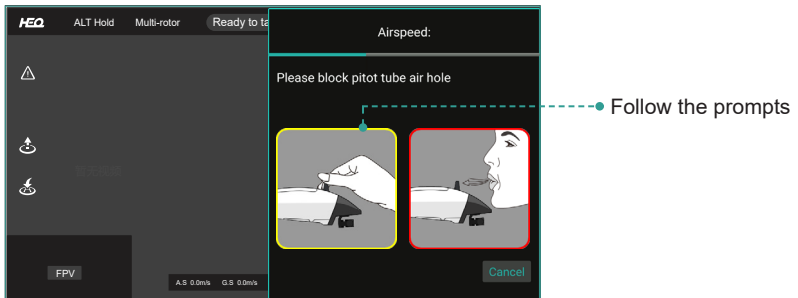
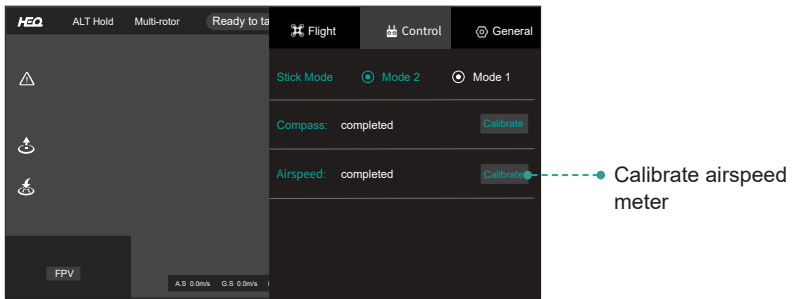
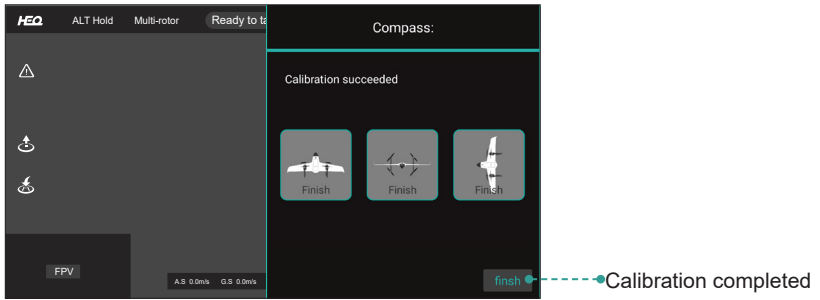
⚠ Please make sure that the flight mode has been switched to the position mode before taking off.

Aircraft Calibration

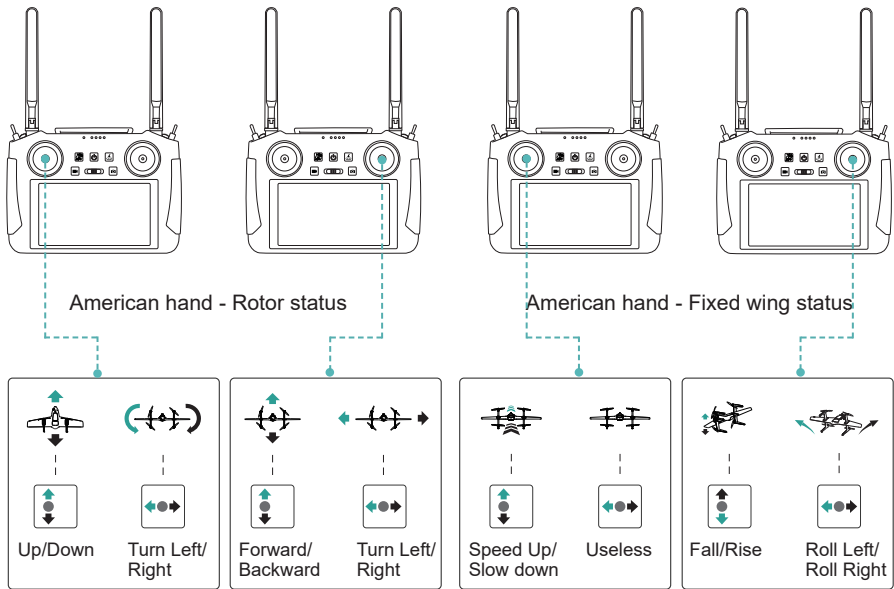
Please calibrate the airspeed meter and compass before flying, It needs to be re-calibrated If the absolute value of the airspeed is more than 5.

The compass needs to be calibrated for the first flight. If the location environment is changed, the magnetic compass needs to be re-calibrated. if the location environment is not changed, it is not necessary to calibrate it again.

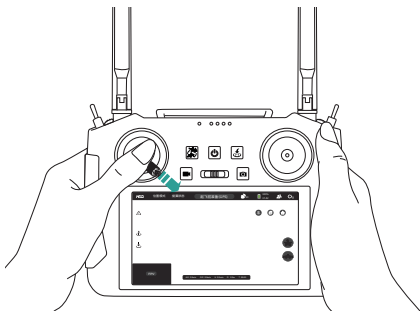




Joystick control aircraft(US hand)

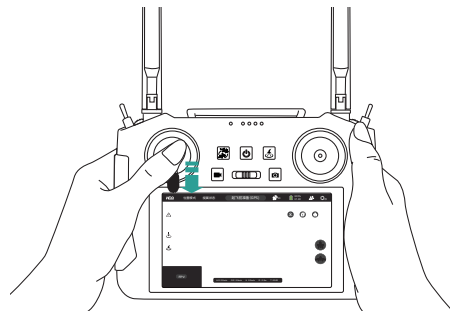


How to unlock(US hand)



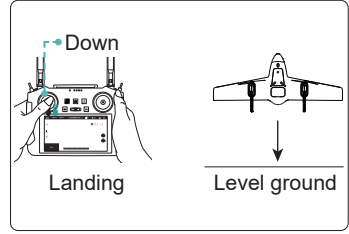
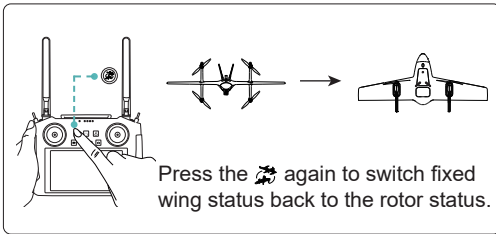
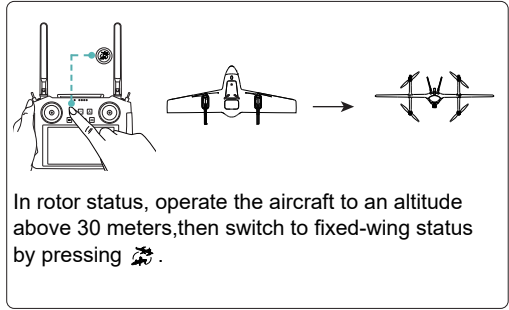
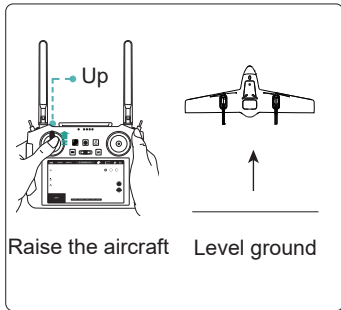
After entering the position mode, move the left stick to the bottom right to unlock the aircraft.
Please release the rocker immediately after the motor turns.

How to lock (US hand)

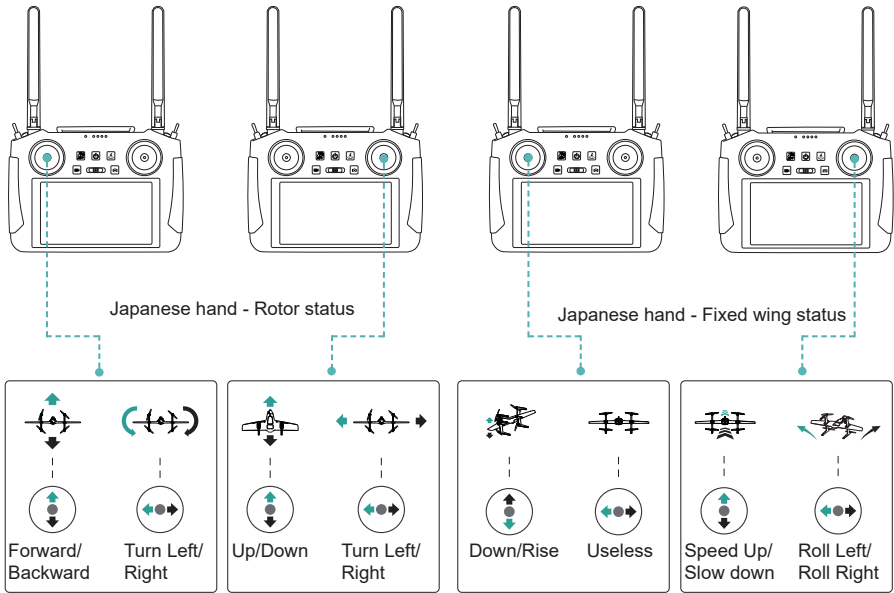


After the aircraft lands on the flat ground, move the left stick right down and hold it for more than 5 seconds to stop the motors.

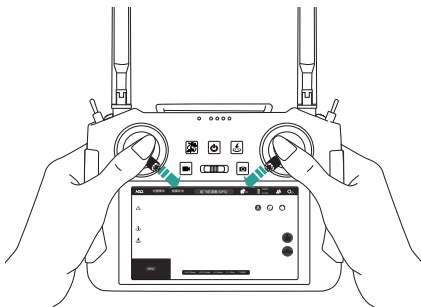
Taking off and landing, Fixed wing/rotor switch (US hand)



Controlling the drone(Japanese hand)



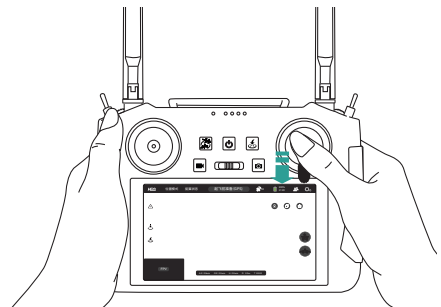
How to unlock(Japanese hand)



After entering position mode, move the left joystick to the bottom right and simultaneously move the right joystick to the bottom left to unlock the aircraft.

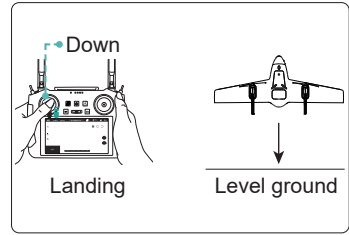
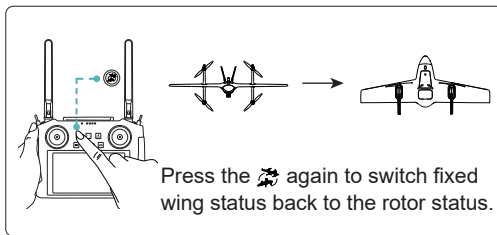
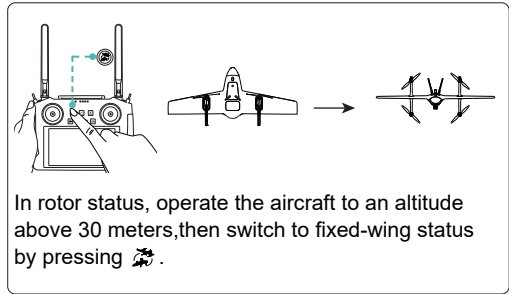
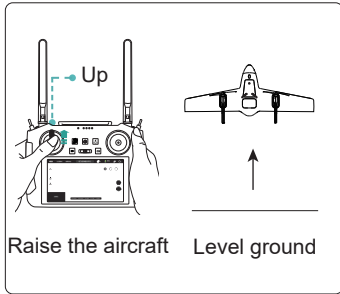
Please release the rocker immediately after the motor turns.

How to lock (Japanese hand)



After the aircraft lands on the flat ground, move the right stick right down and hold it for more than 5 seconds to stop the motors.

Taking off and landing,Fixed wing/rotor switch(Japanese hand)

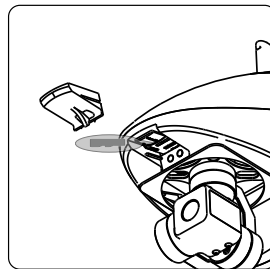
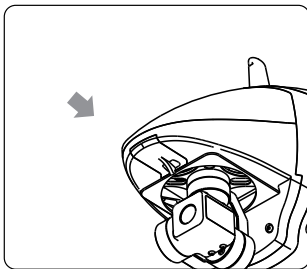


SD card Installation

Open the cover on the top of the main unit's head cover, insert the SD card to take/copy high-definition photos and videos.

The aircraft must be turned off when inserting the SD card.

Use an SD card with a U3 rating for shooting/recording (≥read 170MB/write 90MB).



Specifications

Aircraft Parameters

Wingspan	1.1m
Maximum takeoff weight	1.75kg
Flight duration	50-60mins
Flight speed	11m/s~25m/s
Maximum range	45Km
Remote control distance	8Km
Maximum ascent speed	3m/s
Maximum descent speed	2m/s
Maximum flight altitude	4000m
Maximum wind resistance level	Level 5 (10m/s)
Maximum flying altitude	500m
Power system	2212 980KV motor + 9060 propeller
Aircraft size	107*336*502mm
Packaging size	570*190*540mm
Battery	4S lithium battery 5500mAh
Charger	17.4V 2.8A
Operating temperature	-10°C to 40°C

Gimbal and Camera Parameters

Axis	Mechanical 3-axis
Image sensor size	12 million
Pixels	1/2.3 inch CMOS
Viewing angle	80° ~ 100°
Equivalent focal length	24 mm
Aperture	f/2.8
Focus range	1m to infinity
ISO range	Video ISO range:100 to 3200 (automatic)
Maximum photo size	4:3 aspect ratio: 4000×3000
Video resolution	4K: 3840×2160@24/25/30fps 2.7K: 2720×1530@24/25/30/48/50/60fps FHD: 1920×1080@24/25/30/48/50/60fps
Digital zoom range	4K: 2 Times; 2.7K: 3 Times; FHD: 4 Times
SD card support capacity	≤ 128G
Photo format	JPEG/DNG (RAW)
Video format	MP4 (H.264/MPEG-4 AVC)
Gimbal functions	Pitch, yaw control, one-key return to center

This document will not be notified separately if there is an update.

You can check the latest version on the HEQUAV official website
<http://www.hequavtech.com>

If you have any questions or suggestions about the manual, please contact us via the following email
support@hequavtech.com.

Copyright ©2023 HEQUAV All rights reserved.

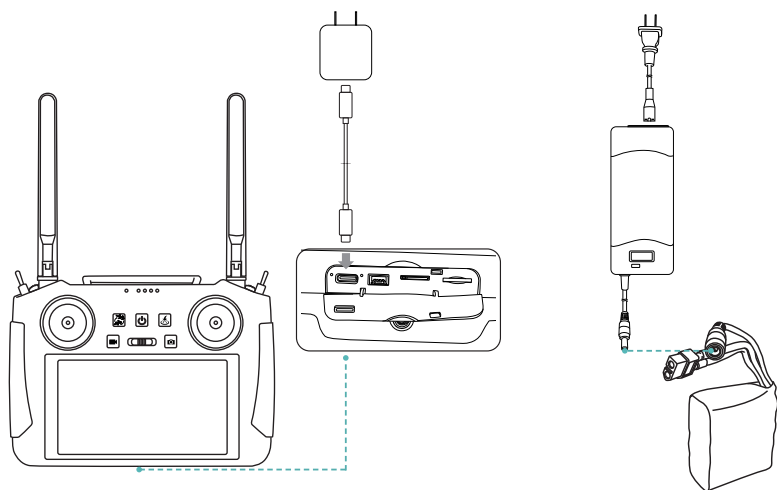


Scan the code via Wechat
to follow HEQUAV WeChat
official account

目录

充电	14
组装	14
开机 / 关机	16
遥控按键介绍	16
云台控制	17
切换位置模式	17
飞行器校准	18
操控飞行器	20
安装 SD 卡	23
规格参数	24

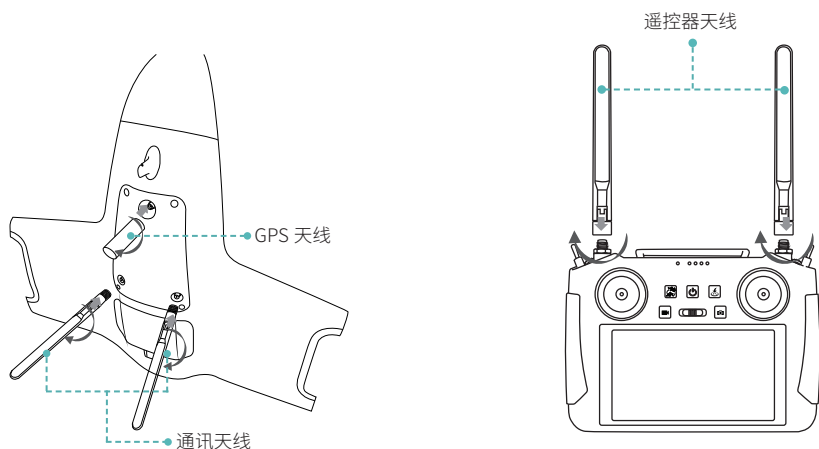
充电



遥控器充电时，请确保遥控器处于关机状态并且使用原厂充电器进行充电。

电池充电时，请使用原厂充电器进行充电。

安装天线

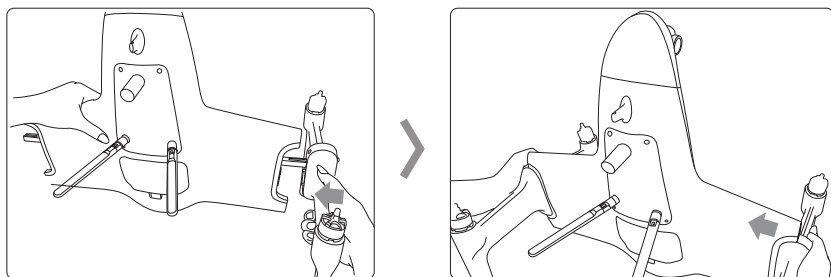


注意：务必安装好天线后再给飞行器上电，然后打开遥控器。

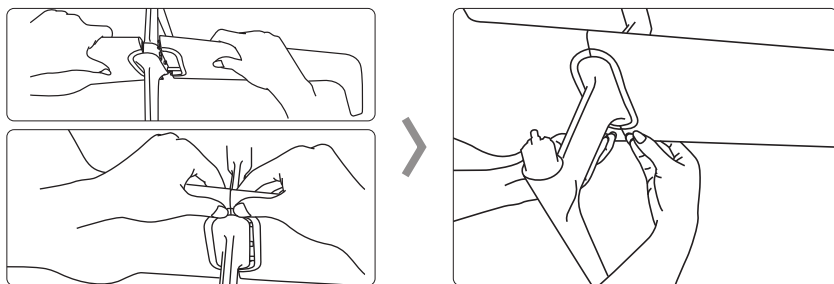
遥控器天线可以与飞行器通讯天线通用。

组装飞行器

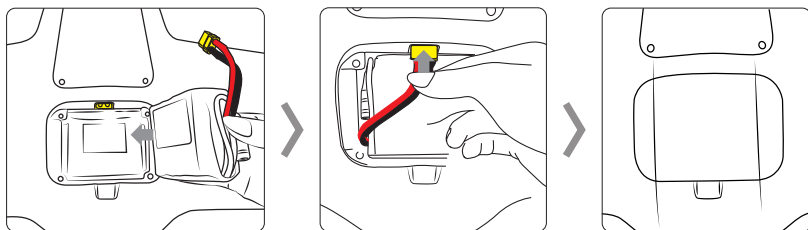
组装机臂



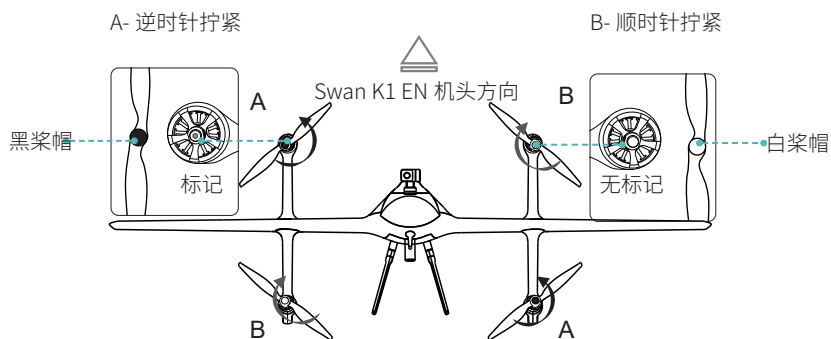
组装机翼



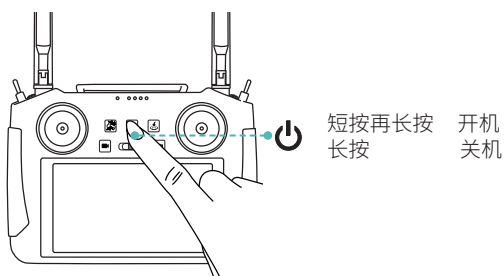
安装电池



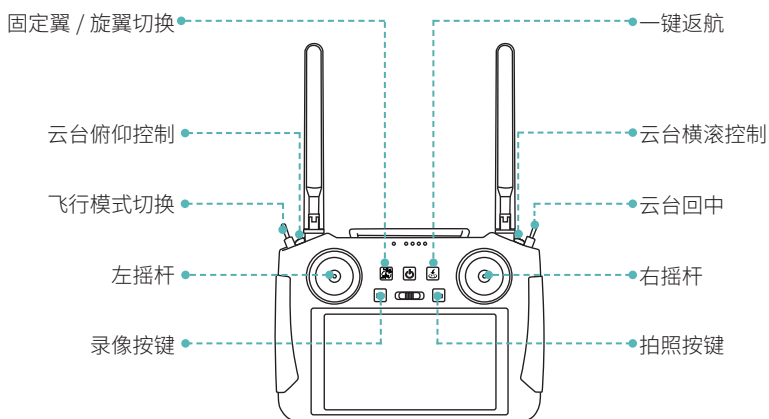
安装螺旋桨



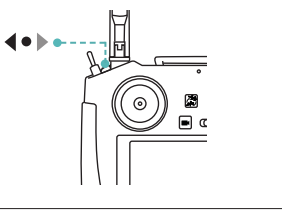
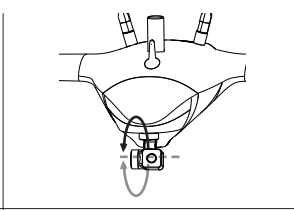
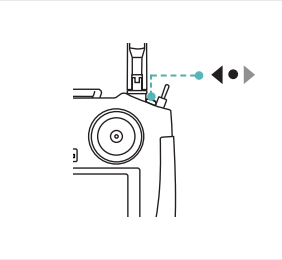
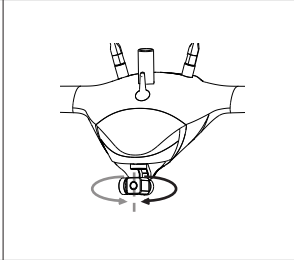
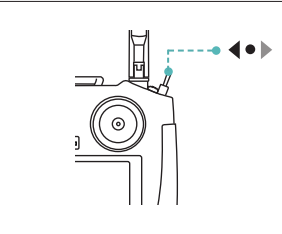
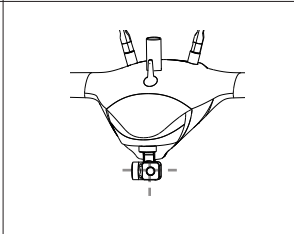
开启与关闭遥控器



遥控器按键介绍

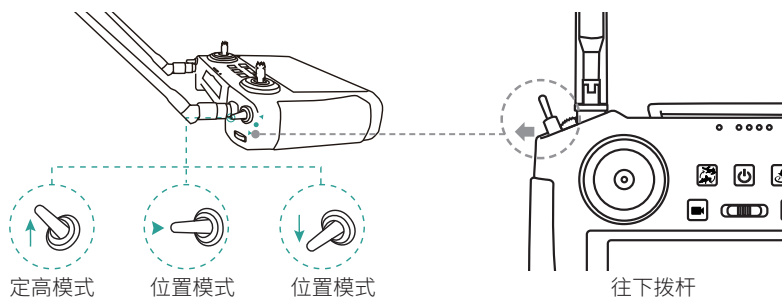


云台控制

		云台俯仰控制
		云台航向控制
		云台回中

进入位置模式

在户外空旷环境下，遥控器开机后，进入 HEQ FLY，等待 GPS 搜索卫星，将飞行模式切换拨杆向下拨动，进入位置模式。

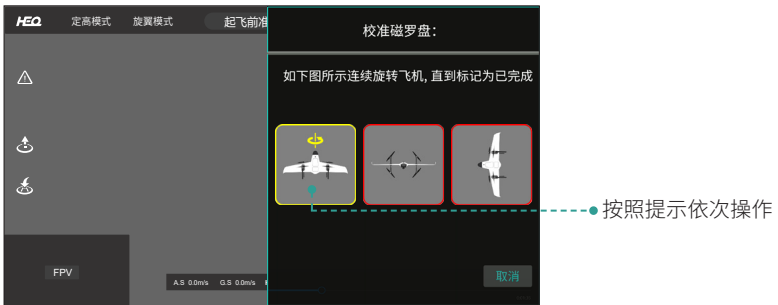


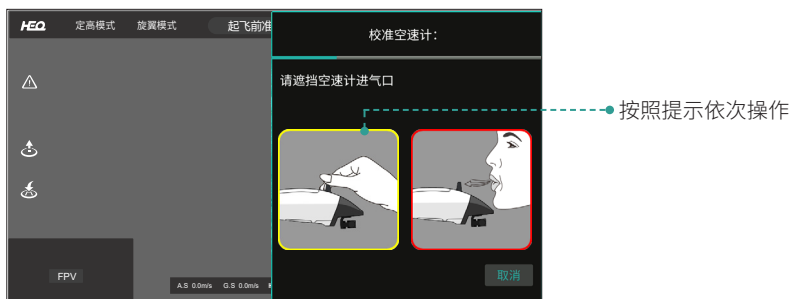
⚠ 请确保起飞前，飞行模式已切换到位置模式。

飞行器校准

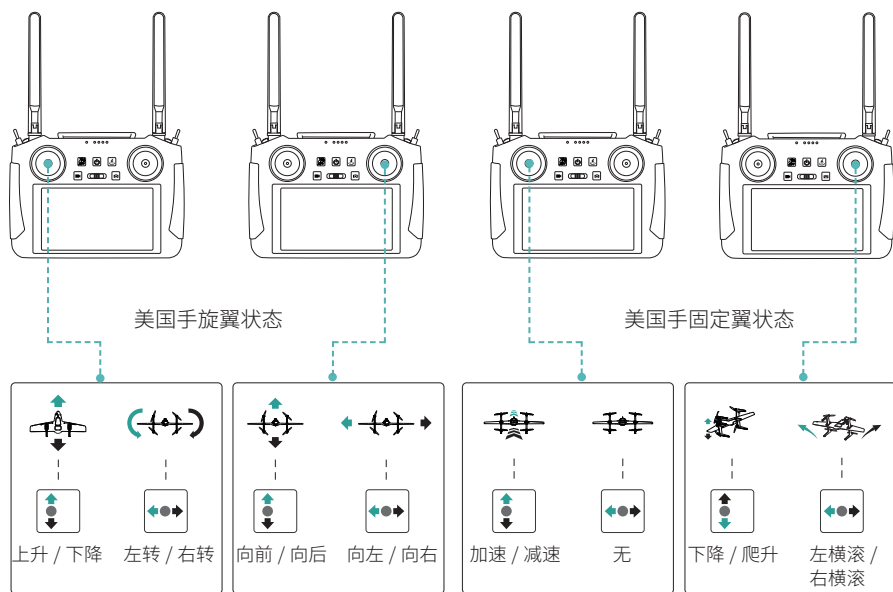
飞行器起飞前需要校准磁罗盘和空速计；若空速绝对值大于 5 需要重新校准。

飞行器第一次飞行，需要完成磁罗盘校准再飞行；若更换地点环境需要重新校准磁罗盘，不更换地点环境则不需要校准。

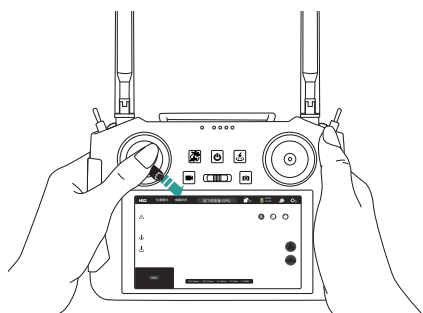




摇杆操控飞行器（美国手）

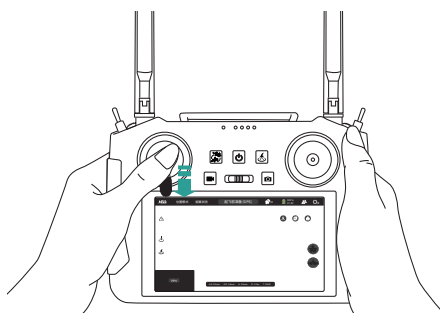


如何解锁（美国手）



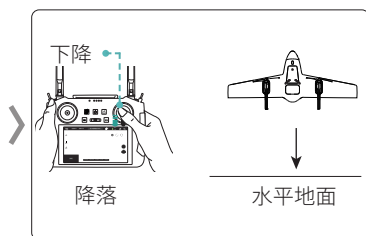
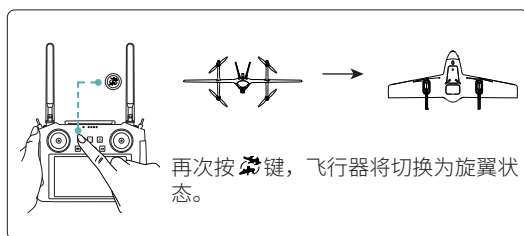
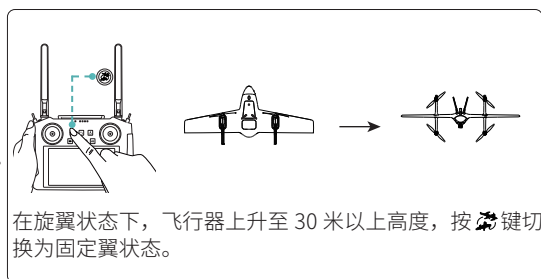
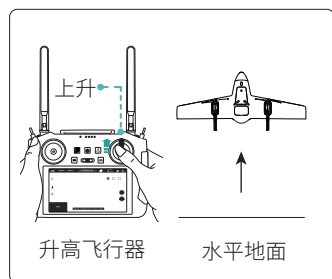
进入位置模式后，向右下方拨动左摇杆，解锁飞行器。
电机转动后，请马上松开摇杆。

如何上锁（美国手）

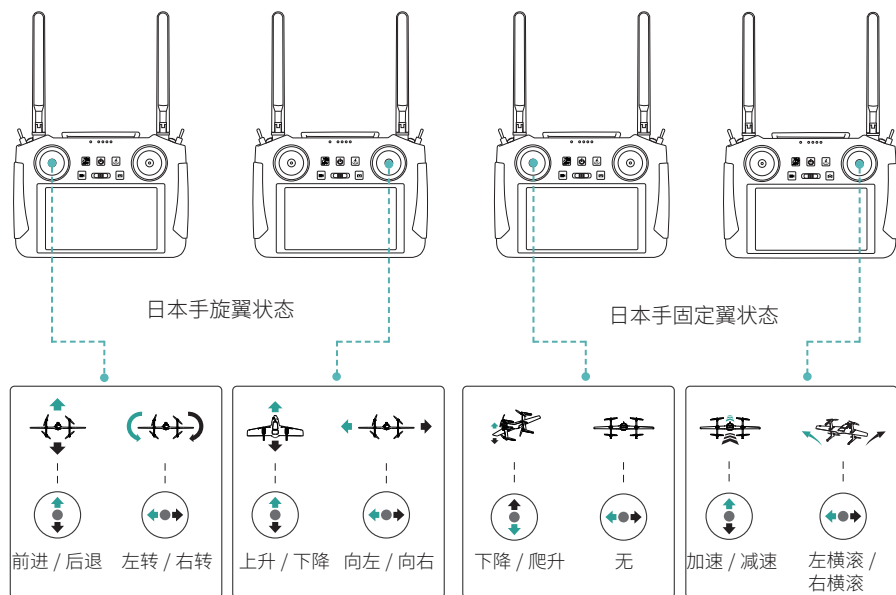


飞行器降落在平地之后，向正下方拨动左摇杆并保持 5 秒以上电机停转。

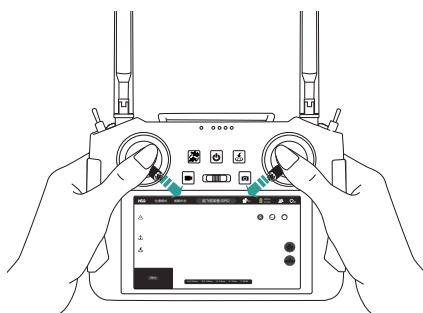
起飞与降落，固定翼 / 旋翼切换（美国手）



摇杆操控飞行器（日本手）

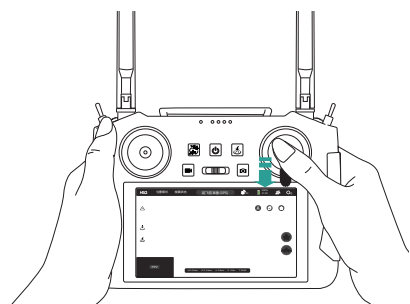


如何解锁（日本手）



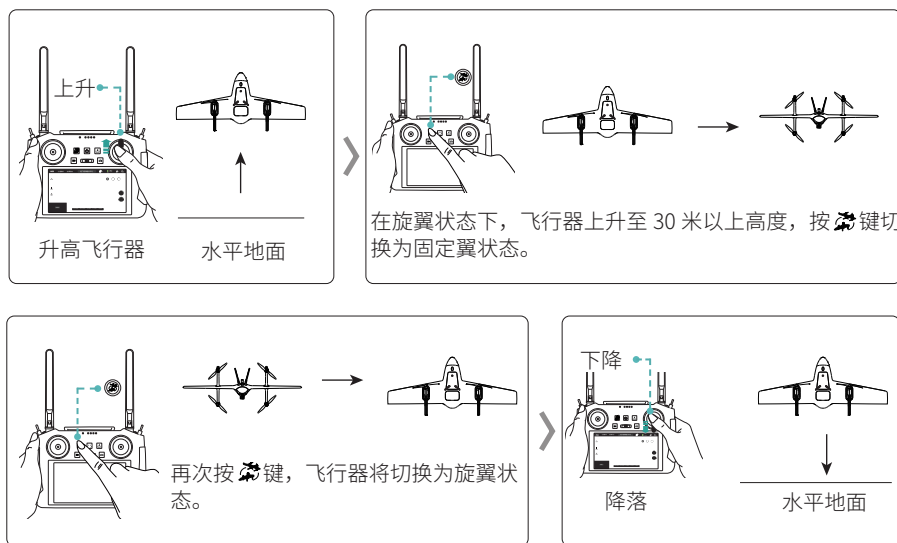
进入位置模式后，向右下方拨动左摇杆的同时向左下方拨动右摇杆，解锁飞行器。电机转动后，请马上松开摇杆。

如何上锁（日本手）



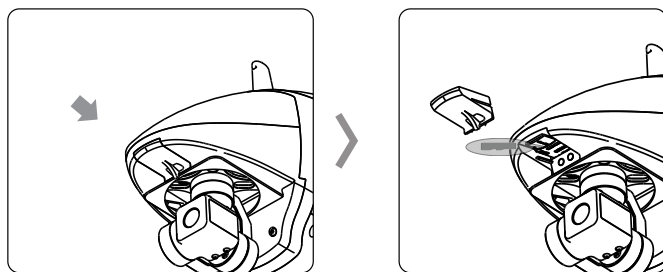
飞行器降落在平地之后，向正下方拨动右摇杆并保持 5 秒以上电机停转。

起飞与降落，固定翼 / 旋翼切换（日本手）



安装 SD 卡

推开主机头罩顶端的盖板，插入 SD 卡，即可拍摄 / 拷贝高清图片和视频。
插入 SD 时，飞机必须处于断电状态。
使用 U3 速率的 SD 卡进行拍照 / 录像 (≥读 170MB/ 写 90MB)。



规格参数

飞行器参数

翼展	1.1m
最大起飞重量	1.75kg
飞行时长	50-60mins
飞行速度	11m/s~25m/s
航程	45Km
遥控距离	8Km
最大上升速度	3m/s
最大下降速度	2m/s
最大飞行海拔高度	4000m
最大飞行高度	500m
最大抗风等级	5级
动力系统	2212 980KV 电机 +9060 桨叶
飞行器尺寸	107*336*502mm
包装尺寸	570*190*540mm
电池	4S 锂电池 5500mAh
充电器	17.4V 2.8A
工作温度	-10°C至 40°C

云台相机参数

轴数	机械三轴
影像传感器尺寸	1200 万
像素	1/2.3 英寸 CMOS
视角	80° ~ 100°
等效焦距	24 mm
光圈	f/2.8
焦点范围	1 m 至无穷远
ISO 范围	视频 ISO 范围: 100 至 3200 (自动)
最大照片尺寸	4:3 宽高比: 4000×3000
录像分辨率	4K: 3840×2160@24/25/30fps 2.7K: 2720×1530@24/25/30/48/50/60fps FHD: 1920×1080@24/25/30/48/50/60fps
SD 卡支持容量	≤ 128G
数字变焦范围	4K: 2 倍; 2.7K: 3 倍; FHD: 4 倍
照片格式	JPEG/DNG (RAW)
视频格式	MP4 (H.264/MPEG-4 AVC)
云台功能	俯仰、偏航控制、一键回中

本文档如有更新，恕不另行通知。

您可以在 HEQUAV 官方网站查询最新版本
<http://www.hequavtech.com>

如果您对说明书有任何疑问或建议，请通过以下电子邮箱联系我们
support@hequavtech.com.

Copyright©2023 禾启智能 版权所有



微信扫一扫关注禾启智能公众号

