

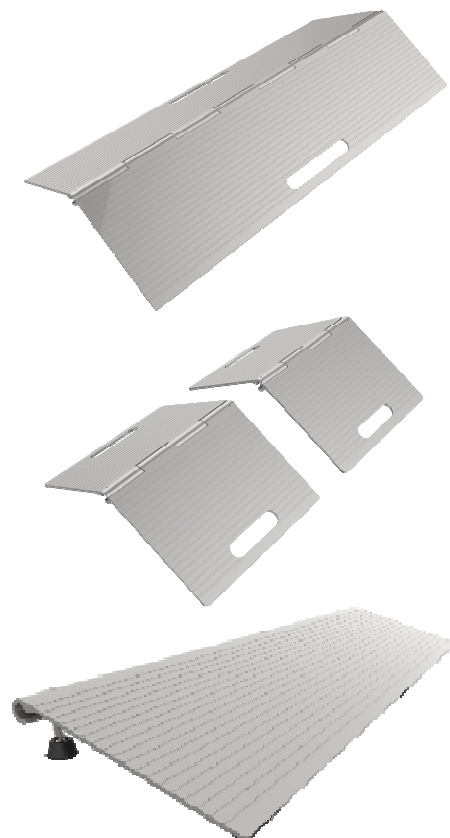


REHASENSE

User's manual

Doorstep ramps

Wheelchair ramps



more than mobility

1 Doorstep Ramps General Information

Dear customer,

This user manual contains a description of the medical device and important guidelines to ensure a correct and safe usage of the product. It is important prior to use to read this manual carefully. It is especially important to read the safety requirements and follow these.

REHASENSE® continuously develops its products and so reserves the right to change the specifications and functions of products without notice.

If you have any queries, please contact your dealer or **REHASENSE®** directly. The contact data is located on the last page of this manual.

2 Doorstep Ramps Indications & Intended Usage

Ramps are medical devices intended to be used only to assist users in wheelchairs or scooters. They enable the passage of elevated points (for example stairs or curbs) with or without the assistance of a helper. Ramps thereby enable users, sitting in a wheelchair because of invalidity, to enter or leave buildings or cars, buses etc. The ramps can be used inside as well as outside. Any other use is prohibited.

3 Doorstep Ramps Safety Information

Make sure that this user's manual is read by all persons who use the device. The manufacturer does not take any responsibility for damages and/or injuries, caused by the fact that the user's manual has not been followed.



Limitations for usage

- Only use the product in flawless condition.
- If defects or errors are detected, you must immediately contact the dealer.
- Be aware of the information on the product label.
- Make sure that this user manual is read by all persons using the ramp. Damages caused by the fact that the user manual has not been followed will not be accepted.
- Ramps must not be loaded with more than the max load described in the Technical Data and on the label.
- The ramp can be used only up to a maximum inclination (max step height) relevant for its length. You can find this data in the technical data and on the product label.
- Only use the ramp for the purpose it is intended for.
- Avoid making constructive changes to the ramps, unless you have the manufacturer's written agreement for such modifications.
- When unfolding the ramp, the user must take care not to trap their fingers or other body parts.
- The ramp must only be used on a stable surface.



Be careful when you see this symbol on the device. Fingers or other body parts of a user or/and assistant can be trapped between device's elements during folding, unfolding or adjusting of the device. Be extremely careful when adjusting the device. Observe the dimensions of gaps between device's elements to avoid trapping your fingers or other body parts.

4 Doorstep Ramps Delivery & product general description

We have 3 different kinds of practical doorstep ramps which are very easy to install and remove. They can be used in a variety of ways for different types of steps and purposes. The surface of ramp profile is equipped with anti-slide grooves for better grip and anodized for high abrasive resistance. They are easy to fold, carry and store.

Initial Check

Ramps are supplied in cartons, folded - for easier transportation.

Contents:

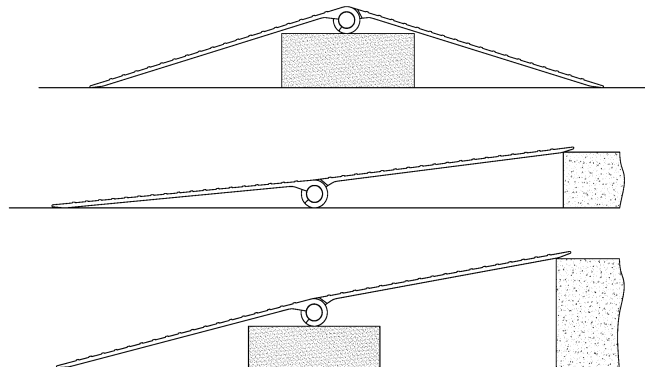
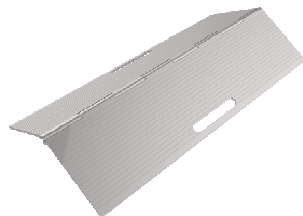
- 1 long hinged ramp
or
- 2 short hinged ramps in a carrying bag
or
- 1 wedge ramp plate with three adjustment feet

- 1 user's manual

Take the device out of the box and check with the list and picture below if nothing is missing. If you discover at that stage that some part is missing or damaged. Contact your supplier of the product right away.

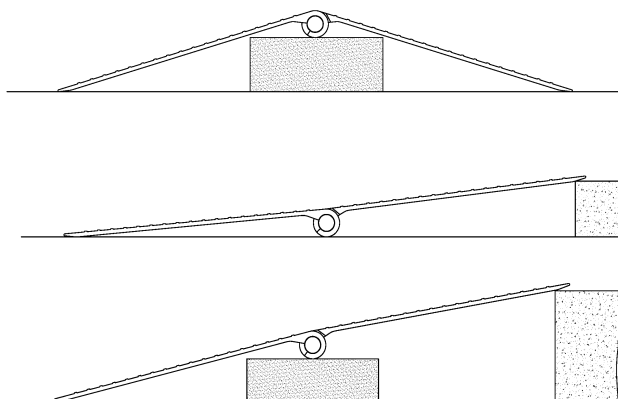
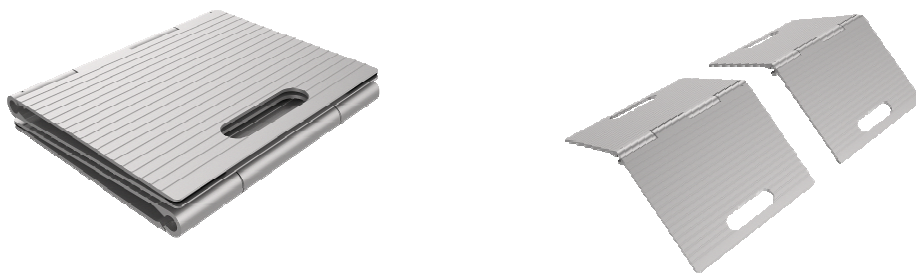
5 Doorstep Ramps Product usage

MINI doorstep ramp – foldable lengthwise – 1 pc (PFD04076)



- Unfold the ramp when use it and after fold it you can use the slot on the product for hand carry.

MICRO doorstep ramp – foldable – set of 2 pcs (PFD04225)

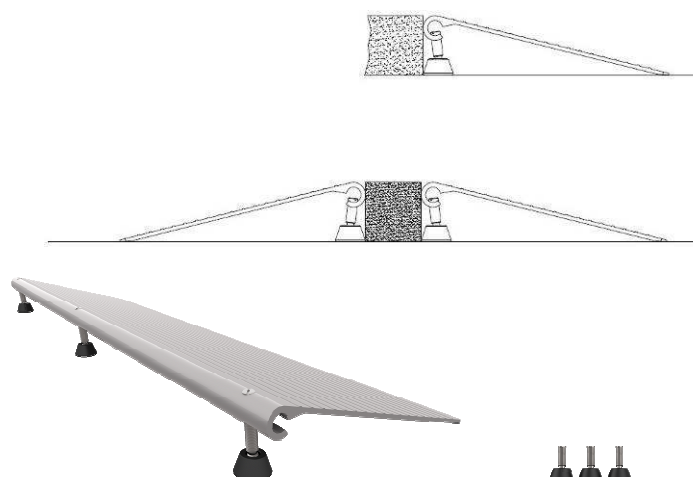


- Unfold the ramp before use and after folding it you can use the slot on the product for hand carry.



The set can be easily carried with you in the special carrying bag

ADJUSTABLE doorstep wedge ramp – 1pc (PAW04276)



- Adjust the length of the adjustment feet to the desired wedge height

General instructions for use

- The ramps must be placed on a stable surface.
- For the MICRO doorstep ramp, the 2 hinged parts must always be placed in parallel position.
- Check that the ramps are put stable before using them.



6 Doorstep Ramps Transport description

Doorstep ramps can be easily folded for hand carry transport. Always ensure during transportation that the ramp is safely secured against unintended movements.

7 Doorstep Ramps

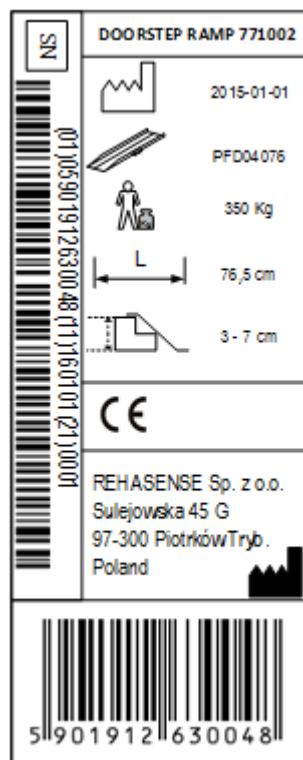
Technical data

Item no.	Feature	Max length (mm)	Track width (mm)	Max height for step (mm)	Max load per pair (kg)	Weight per pair (kg)
PFD04076	Bridge ramp of 2 hinged parts	765	760	30-70	350	3,3
PFD04225	Mini bridge ramp set of 2 x 2 hinged parts	250x2	250	30-70	350	2,2
PAW04276	adjustable door step wedge ramp	765	760	30-70	350	1,6

8 Doorstep Ramps

Label

The product label is placed on one of the sides:



9 Doorstep Ramps

Cleaning description

- Regularly clean the device and keep it clean.
- Lighter dirt and dust can be removed with a wet cloth.
- Larger parts of dirt can be removed with a non-corroding, mild washing agent and water.
- Do not use harsh abrasives or bleach-based cleaners, which may cause damage.
- Dry parts with soft cloth.

10 Doorstep Ramps

Maintenance

The ramps basically are maintenance free. Although it is recommended to always check before use if the anti-slip material under the top support isn't dirty or torn. In case of any doubts about the technical condition of your ramp stop using it and contact your dealer. Despite the solid construction and the use of resistant materials the product is subject to wear. It is therefore recommended to have the product checked at regular intervals by a professional.

- Replace the ramp if there is any part broken or damaged.
- Replace the ramp if the anti-slip is worn off.
- Replace the adjustment foot on the adjustable wedge ramp immediately if it is damaged.

11 Doorstep Ramps

How to deposit the product

The device should not be deposited with normal garbage. It should be delivered to the deposit station for re-use or recycling.

12 Doorstep Ramps

Guarantee

The producer offers 2 years of guarantee for errors in production. The guarantee does not cover damages caused by not-intended use or not following the instructions of this manual.



REHASENSE

In case of technical problems please contact your dealer. You can also contact Rehasense® directly.

Dealer:

Manufacturer:

Rehasense® Sp.z o.o.

Sulejowska 45G

97-300 Piotrków Trybunalski

Poland

www.rehasense.com

info@rehasense.com