



Stainless Steel  
**Maxima**<sup>®</sup>

REDISCOVER  
THE JOY OF COOKING

# Product Catalogue



Manufactured & Marketed by

**SAMRAT HOUSEWARE (P) LTD**

1/99 Poonamallee High Road, Vanagaram, Chennai - 600095, Tamil Nadu, India



Trendy |



Sturdy |



Safe

# Life Time Warranty

For All Triply Cookware Items



## TRIPLY COOKWARE

**KADAI**

Code : SI - 2071

THICKNESS

2.5 MM

|                 |        |        |        |        |        |        |        |        |        |        |        |         |
|-----------------|--------|--------|--------|--------|--------|--------|--------|--------|--------|--------|--------|---------|
| <b>Size</b>     | 16cm   | 18cm   | 20cm   | 22cm   | 24cm   | 26cm   | 28cm   | 30cm   | 32cm   | 34cm   | 36cm   | 40cm    |
| <b>Capacity</b> | 1.0Ltr | 1.2Ltr | 1.5Ltr | 2.0Ltr | 2.5Ltr | 3.6Ltr | 4.1Ltr | 5.6Ltr | 5.9Ltr | 7.5Ltr | 9.1Ltr | 12.0Ltr |
| <b>MRP</b>      | 2585/- | 2690/- | 2930/- | 3130/- | 3355/- | 3755/- | 4145/- | 4605/- | 4955/- | 5750/- | 6250/- | 6880/-  |

## TRIPLY COOKWARE

**TASRA**

Code : SI - 2070

THICKNESS

2.5 MM



|                 |        |        |        |        |        |        |        |        |        |        |        |         |
|-----------------|--------|--------|--------|--------|--------|--------|--------|--------|--------|--------|--------|---------|
| <b>Size</b>     | 16cm   | 18cm   | 20cm   | 22cm   | 24cm   | 26cm   | 28cm   | 30cm   | 32cm   | 34cm   | 36cm   | 40cm    |
| <b>Capacity</b> | 1.0Ltr | 1.2Ltr | 1.5Ltr | 2.0Ltr | 2.5Ltr | 3.6Ltr | 4.1Ltr | 5.6Ltr | 5.9Ltr | 7.5Ltr | 9.1Ltr | 12.0Ltr |
| <b>MRP</b>      | 1610/- | 1750/- | 1930/- | 2180/- | 2350/- | 2790/- | 3140/- | 3695/- | 3975/- | 5115/- | 5425/- | 5820/-  |



## TRIPLY COOKWARE

**SAUCE PAN**

Code : SI - 2069

THICKNESS

2.5 MM

|                 |        |        |        |        |         |
|-----------------|--------|--------|--------|--------|---------|
| <b>Size</b>     | 12cm   | 14cm   | 16cm   | 18cm   | 20cm    |
| <b>Capacity</b> | 0.8Ltr | 1.0Ltr | 1.6Ltr | 2.2Ltr | 3.1 Ltr |
| <b>MRP</b>      | 2325/- | 2535/- | 2730/- | 3010/- | 3355/-  |



Stainless Steel  
**Maxima**<sup>®</sup>

REDISCOVER  
THE JOY OF COOKING

# Life Time Warranty

For All Triply Cookware Items

## TRIPLY COOKWARE

**HONEYCOMB KADAI**

Code : SI - 2071

THICKNESS  
2.5 MM



|          |        |        |        |        |
|----------|--------|--------|--------|--------|
| Size     | 22cm   | 24cm   | 26cm   | 28cm   |
| Capacity | 2.0Ltr | 2.5Ltr | 3.6Ltr | 4.1Ltr |
| MRP      | 3675/- | 3875/- | 4175/- | 4475/- |



## TRIPLY COOKWARE

**HONEYCOMB TASRA**

Code : SI - 2097

THICKNESS  
4.0 MM

|          |        |        |        |        |
|----------|--------|--------|--------|--------|
| Size     | 22cm   | 24cm   | 26cm   | 28cm   |
| Capacity | 2.0Ltr | 2.5Ltr | 3.6Ltr | 4.1Ltr |
| MRP      | 2775/- | 2975/- | 3375/- | 3675/- |

## TRIPLY COOKWARE

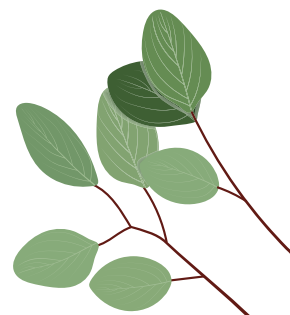
**HONEYCOMB  
PARATHA TAWA**

Code : SI - 2132

THICKNESS  
4.0 MM



|      |        |
|------|--------|
| Size | 26cm   |
| MRP  | 2799/- |





REDISCOVER  
THE JOY OF COOKING

## TRIPLY COOKWARE

**FRY PAN**

Code : SI - 2068

**THICKNESS**  
2.5 MM



|                 |        |         |        |        |        |
|-----------------|--------|---------|--------|--------|--------|
| <b>Size</b>     | 16cm   | 18cm    | 20cm   | 22cm   | 24cm   |
| <b>Capacity</b> | 0.5Ltr | 0.75Ltr | 0.8Ltr | 1.0Ltr | 1.6Ltr |
| <b>MRP</b>      | 1850/- | 1990/-  | 2140/- | 2375/- | 2595/- |

## TRIPLY COOKWARE

**WOK PAN**

Code : SI - 2092

**THICKNESS**  
2.5 MM



|                 |        |        |        |        |        |        |
|-----------------|--------|--------|--------|--------|--------|--------|
| <b>Size</b>     | 16cm   | 18cm   | 20cm   | 22cm   | 24cm   | 26cm   |
| <b>Capacity</b> | 1.0Ltr | 1.2Ltr | 1.5Ltr | 2.0Ltr | 2.5Ltr | 3.6Ltr |
| <b>MRP</b>      | 2475/- | 2585/- | 2825/- | 3025/- | 3250/- | 3755/- |

## TRIPLY COOKWARE

**SAUTE PAN**

Code : SI - 2076

**THICKNESS**  
2.5 MM



|                 |        |        |        |        |
|-----------------|--------|--------|--------|--------|
| <b>Size</b>     | 20cm   | 22cm   | 24cm   | 26cm   |
| <b>Capacity</b> | 1.4Ltr | 1.8Ltr | 2.3Ltr | 3.1Ltr |
| <b>MRP</b>      | 2815/- | 2915/- | 3340/- | 3565/- |

## 5 PIECE SET STAINLESS STEEL COOKWARE

**KADAI**

Code : SI - 2092

**FRY PAN**

Code : SI - 2092

**SAUCE PAN**

Code : SI - 2092



|             |         |      |      |
|-------------|---------|------|------|
| <b>Size</b> | 22cm    | 22cm | 16cm |
| <b>MRP</b>  | 2,895/- |      |      |



## TRIPLY COOKWARE

**TOPE**

Code : SI - 2088

**THICKNESS**

2.5 MM



|                 |        |        |        |        |        |        |        |        |        |         |
|-----------------|--------|--------|--------|--------|--------|--------|--------|--------|--------|---------|
| <b>Size</b>     | 12cm   | 14cm   | 16cm   | 18cm   | 20cm   | 22cm   | 24cm   | 26cm   | 28cm   | 32cm    |
| <b>Capacity</b> | 0.8Ltr | 1.0Ltr | 1.6Ltr | 2.2Ltr | 3.1Ltr | 4.2Ltr | 5.3Ltr | 6.9Ltr | 8.3Ltr | 12.0Ltr |
| <b>MRP</b>      | 1385/- | 1570/- | 1875/- | 2160/- | 2525/- | 3020/- | 3360/- | 3900/- | 4350/- | 5450/-  |



## TRIPLY COOKWARE

**SHALLOW TOPE**

Code : SI - 2094

**THICKNESS**

2.5 MM

|                 |        |        |        |        |
|-----------------|--------|--------|--------|--------|
| <b>Size</b>     | 20cm   | 22cm   | 24cm   | 26cm   |
| <b>Capacity</b> | 1.6Ltr | 1.8Ltr | 2.3Ltr | 3.1Ltr |
| <b>MRP</b>      | 2305/- | 2505/- | 2855/- | 3065/- |

## TRIPLY COOKWARE

**EXTRA DEEP  
SHALLOW TOPE**

Code : SI - 2098

**THICKNESS**

2.5 MM



|                 |        |        |        |        |
|-----------------|--------|--------|--------|--------|
| <b>Size</b>     | 20cm   | 22cm   | 24cm   | 26cm   |
| <b>Capacity</b> | 1.5Ltr | 2.0Ltr | 3.0Ltr | 3.4Ltr |
| <b>MRP</b>      | 2525   | 2665/- | 3045/- | 3290/- |

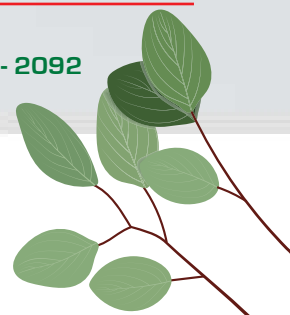
## 3 PIECE SET STAINLESS STEEL COOKWARE

**TASRA**

Code : SI - 2092



|             |        |      |      |
|-------------|--------|------|------|
| <b>Size</b> | 20cm   | 22cm | 24cm |
| <b>MRP</b>  | 4995/- |      |      |





REDISCOVER  
THE JOY OF COOKING



### TRIPLY COOKWARE

**SAUCE POT**  
Code : SI - 2067

**THICKNESS**  
2.5 MM

|                 |        |        |        |        |        |        |        |         |
|-----------------|--------|--------|--------|--------|--------|--------|--------|---------|
| <b>Size</b>     | 16cm   | 18cm   | 20cm   | 22cm   | 24cm   | 26cm   | 28cm   | 32cm    |
| <b>Capacity</b> | 2.0Ltr | 2.5Ltr | 3.1Ltr | 4.2Ltr | 5.3Ltr | 6.9Ltr | 8.3Ltr | 12.0Ltr |
| <b>MRP</b>      | 2950/- | 3250/- | 3575/- | 3915/- | 4155/- | 4855/- | 5175/- | 6300/-  |

### TRIPLY COOKWARE

**MINI SAUCE POT**  
Code : SI - 2119

**THICKNESS**  
2.5 MM



|                 |        |        |        |        |
|-----------------|--------|--------|--------|--------|
| <b>Size</b>     | 20cm   | 22cm   | 24cm   | 26cm   |
| <b>Capacity</b> | 1.4Ltr | 1.8Ltr | 2.3Ltr | 3.1Ltr |
| <b>MRP</b>      | 3175/- | 3515/- | 3755/- | 4455/- |



### TRIPLY COOKWARE

**ROTI TAWA**  
Code : SI - 2072

**THICKNESS**  
4.0 MM

|             |        |
|-------------|--------|
| <b>Size</b> | 26cm   |
| <b>MRP</b>  | 1999/- |

### TRIPLY COOKWARE

**CHAPATI TAWA**  
Code : SI - 2133

**THICKNESS**  
4.0 MM



|             |        |
|-------------|--------|
| <b>Size</b> | 26cm   |
| <b>MRP</b>  | 2399/- |



## TRIPLY COOKWARE

**MULTI KADAI**  
Code : SI - 2097

**THICKNESS**  
2.5 MM

|      |        |
|------|--------|
| Size | 28cm   |
| MRP  | 4999/- |

## TRIPLY COOKWARE

**MULTI KADAI**  
Code : SI - 2097

**THICKNESS**  
2.5 MM



|      |        |
|------|--------|
| Size | 20cm   |
| MRP  | 3555/- |

## TRIPLY COOKWARE

**MINI SAUCE PAN**  
Code : SI - 2123-10

**THICKNESS**  
2.5 MM



|          |         |
|----------|---------|
| Size     | 10cm    |
| Capacity | 0.3 Ltr |
| MRP      | 1250/-  |

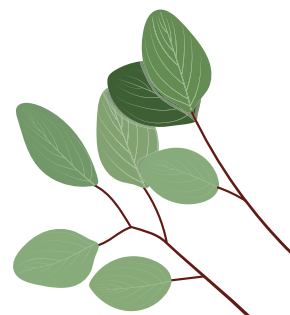
## TRIPLY COOKWARE

**MINI FRY PAN**  
Code : SI - 2124-10

**THICKNESS**  
2.5 MM



|          |          |          |
|----------|----------|----------|
| Size     | 12cm     | 14cm     |
| Capacity | 0.25 Ltr | 0.40 Ltr |
| MRP      | 1280/-   | 1380/-   |



# Our Cookers are ISI Certified

## TRIPLY COOKER

**SUMO**

Code : SI - 2089

**SUMO PLUS**

Code : SI - 2090



| Capacity | 1.5Ltr | 2.5Ltr | 3.5Ltr | 5.0Ltr | 6.0Ltr |
|----------|--------|--------|--------|--------|--------|
| MRP      | 2915/- | 3280/- | 3595/- | 4340/- | 4995/- |

## TRIPLY COOKER

**SUMO BELLY**

Code : SI - 2112

**SUMO BELLY PLUS**

Code : SI - 2095



| Capacity | 1.5Ltr | 2.5Ltr | 3.5Ltr | 5.0Ltr |
|----------|--------|--------|--------|--------|
| MRP      | 2990/- | 3370/- | 3700/- | 4445/- |

## STAINLESS STEEL COOKER

**AURO**

Code : SI - 2091

**AURO BELLY**

Code : SI - 2096



| Capacity | 2.5Ltr | 3.5Ltr | 5.0Ltr |
|----------|--------|--------|--------|
| MRP      | 2630/- | 2850/- | 3730/- |

| Capacity | 3.5Ltr | 5.0Ltr |
|----------|--------|--------|
| MRP      | 3015/- | 3950/- |





REDISCOVER THE JOY OF COOKING



### TRIPLY COOKER

SUMO PRIME

Code : SI - 0000-00

|          |        |        |        |
|----------|--------|--------|--------|
| Capacity | 2Ltr   | 3Ltr   | 5Ltr   |
| MRP      | 3495/- | 3795/- | 4395/- |

### STAINLESS STEEL

HOT POT

PLATINA

Code : HP - 301



|      |        |        |        |        |        |        |         |         |         |
|------|--------|--------|--------|--------|--------|--------|---------|---------|---------|
| Size | 1000ml | 1500ml | 2500ml | 3500ml | 5000ml | 7500ml | 10000ml | 15000ml | 20000ml |
| MRP  | 980/-  | 1155/- | 1390/- | 1705/- | 2080/- | 2525/- | 3070/-  | 4900/-  | 5715/-  |



### STAINLESS STEEL

HOT POT

AURA

Code : HP - 302

|      |        |        |        |        |        |        |         |
|------|--------|--------|--------|--------|--------|--------|---------|
| Size | 1000ml | 1500ml | 2500ml | 3500ml | 5000ml | 7500ml | 10000ml |
| MRP  | 980/-  | 1155/- | 1390/- | 1705/- | 2080/- | 2525/- | 3070/-  |

### STAINLESS STEEL

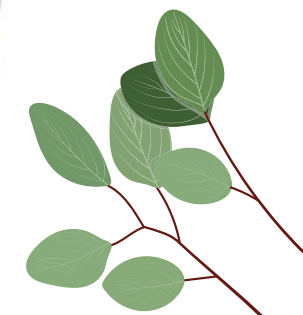
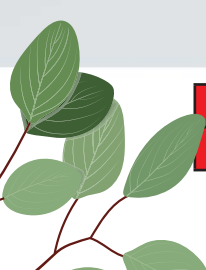
HOT POT

GALAXY

Code : HP - 300



|      |        |        |        |        |
|------|--------|--------|--------|--------|
| Size | 1500ml | 2500ml | 3500ml | 5000ml |
| MRP  | 1200/- | 1425/- | 1770/- | 2235/- |



Stainless Steel  
**Maxima**<sup>®</sup>

REDISCOVER  
THE JOY OF COOKING

### 3 PIECE GIFT SET

HOT POT

DESIGNER

Code : SI - 2124-10



|      |         |        |        |
|------|---------|--------|--------|
| Size | 1000ml  | 1500ml | 2500ml |
| MRP  | 2,699/- |        |        |



### STAINLESS STEEL

PICNIC POT

PICNIC POT

Code : HP - 303

|      |        |        |         |         |         |         |
|------|--------|--------|---------|---------|---------|---------|
| Size | 5000ml | 7500ml | 10000ml | 15000ml | 20000ml | 25000ml |
| MRP  | 3090/- | 3680/- | 4505/-  | 6025/-  | 7425/-  | 8890/-  |

### STAINLESS STEEL

PROFESSIONAL  
SERIES

DELTA HOT POT

Code : HP - 240



|      |         |         |         |         |         |         |
|------|---------|---------|---------|---------|---------|---------|
| Size | 15000ml | 20000ml | 30000ml | 40000ml | 50000ml | 60000ml |
| MRP  | 6025/-  | 7425/-  | 9340/-  | 10990/- | 12705/- |         |

### STAINLESS STEEL

PROFESSIONAL  
SERIES

SUPER HOT POT

Code : HP - 114



|      |         |         |         |         |         |
|------|---------|---------|---------|---------|---------|
| Size | 15000ml | 20000ml | 30000ml | 40000ml | 50000ml |
| MRP  | 6025/-  | 7425/-  | 9340/-  | 10990/- | 12705/- |



## STAINLESS STEEL Water Bottle

**ELEGANT**

Code : SE - 103

**PRIMO**

Code : SE - 111

|      |       |       |        |
|------|-------|-------|--------|
| Size | 500ml | 750ml | 1000ml |
| MRP  | 420/- | 460/- | 495/-  |

## STAINLESS STEEL Water Bottle

**HAMMERED**

Code : SE - 119

**STYLE**

Code : SI - 2052



|      |        |
|------|--------|
| Size | 1000ml |
| MRP  | 565/-  |

|      |        |
|------|--------|
| Size | 1000ml |
| MRP  | 495/-  |



|      |       |        |
|------|-------|--------|
| Size | 750ml | 1000ml |
| MRP  | 495/- | 560/-  |



|      |        |
|------|--------|
| Size | 1000ml |
| MRP  | 640/-  |

## STAINLESS STEEL Water Bottle

**KOLA**

Code : SE - 120

**STYLO**

Code : SE - 105



REDISCOVER  
THE JOY OF COOKING



## STAINLESS STEEL Feeding Bottle

AAYUSH

Code : SI - 2086

|      |       |       |       |
|------|-------|-------|-------|
| Size | 150ml | 250ml | 300ml |
| MRP  | 480/- | 525/- | 580/- |

## STAINLESS STEEL Feeding Bottle

AMULYA

Code : SI - 2087



|      |       |       |       |
|------|-------|-------|-------|
| Size | 150ml | 250ml | 300ml |
| MRP  | 480/- | 525/- | 580/- |



|      |       |       |
|------|-------|-------|
| Size | 150ml | 250ml |
| MRP  | 480/- | 525/- |

## STAINLESS STEEL Feeding Bottle

AMRITA

Code : SI - 2074

## STAINLESS STEEL

OIL POT

Code : SI - 2075



|      |       |       |        |
|------|-------|-------|--------|
| Size | 500ml | 750ml | 1000ml |
| MRP  | 565/- | 595/- | 675/-  |



## STAINLESS STEEL Barni

**WITHOUT HANDLE**

Code : SE - 111

**FLAT HANDLE**

Code : SE - 103

**WIRE HANDLE**

Code : SE - 103



| Size | 1.2Ltr | 1.5Ltr | 2.2Ltr | 3.0Ltr | 3.5Ltr |
|------|--------|--------|--------|--------|--------|
| MRP  | 955/-  | 1115/- | 1380/- |        |        |



| Size | 1.2Ltr | 1.5Ltr | 2.2Ltr | 3.0Ltr | 3.5Ltr |
|------|--------|--------|--------|--------|--------|
| MRP  | 1090/- | 1255/- | 1520/- | 1700/- |        |



| Size | 1.2Ltr | 1.5Ltr | 2.2Ltr | 3.0Ltr | 3.5Ltr |
|------|--------|--------|--------|--------|--------|
| MRP  | 985/-  | 1145/- | 1415/- | 1615/- |        |



## MILK CAN

Code : SI - 2120

| Size | 2000 ml | 3000 ml | 4000 ml |
|------|---------|---------|---------|
| MRP  | 1175/-  | 1425/-  | 1650/-  |

## STAINLESS STEEL Canister

**TECOS**

Code : SI - 2103

**TULIP**

Code : SI - 2093



| Size | 350ml | 650ml | 950ml |
|------|-------|-------|-------|
| MRP  | 430/- | 520/- | 565/- |

| Size | 500ml | 900ml | 1300ml | 1800ml | 2300ml |
|------|-------|-------|--------|--------|--------|
| MRP  | 495/- | 595/- | 660/-  | 799/-  | 000/-  |





REDISCOVER  
THE JOY OF COOKING

### 3 PIECE SET TRIPLY STAINLESS STEEL

TOPE

Code : SI - 2140 - 3S



|      |        |      |      |
|------|--------|------|------|
| Size | 14cm   | 16cm | 18cm |
| MRP  | 4995/- |      |      |



### 3 PIECE SET STAINLESS STEEL

ROYAL SERVING HANDI

Code : SI - 2142 - 3S

|      |         |         |         |
|------|---------|---------|---------|
| Size | 1.0 Ltr | 2.0 Ltr | 3.0 Ltr |
| MRP  | 2150/-  |         |         |

### SS Ghee Pot

SHAHI

Code : SI - 2141-30

KANHA

Code : SI - 2141 - 50

DELIGHT



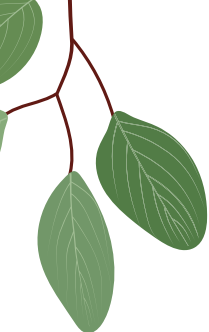
|      |       |
|------|-------|
| Size | 500ml |
| MRP  | 695/- |



|      |       |       |
|------|-------|-------|
| Size | 300ml | 200ml |
| MRP  | 595/- | 000/- |



|      |       |
|------|-------|
| Size | 300ml |
| MRP  | 000/- |



Stainless Steel  
**Maxima**<sup>®</sup>

REDISCOVER  
THE JOY OF COOKING



## STAINLESS STEEL 2 PIECE SET CANISTER

**TECOS**

Code : SI - 2130 - 2S

|      |        |       |
|------|--------|-------|
| Size | 650ml  | 950ml |
| MRP  | 1025/- |       |

## STAINLESS STEEL 2 PIECE SET CANISTER

**TECOS**

Code : SI - 2128 - 2S



|      |        |       |
|------|--------|-------|
| Size | 950ml  | 950ml |
| MRP  | 1075/- |       |

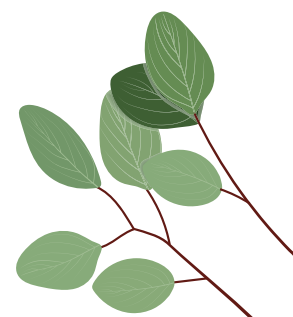


## STAINLESS STEEL 2 PIECE SET CANISTER

**TULIP**

Code : SI - 2131 - 2S

|      |        |       |
|------|--------|-------|
| Size | 900ml  | 900ml |
| MRP  | 1125/- |       |





REDISCOVER  
THE JOY OF COOKING



## STAINLESS STEEL Canister

SUNSHINE

Code : SI - 2103

|      |       |       |        |
|------|-------|-------|--------|
| Size | 600ml | 900ml | 1300ml |
| MRP  | 729/- | 799/- | 869/-  |

## STAINLESS STEEL Milk Jug

BELLY MILK JUG

Code : SI - 2036

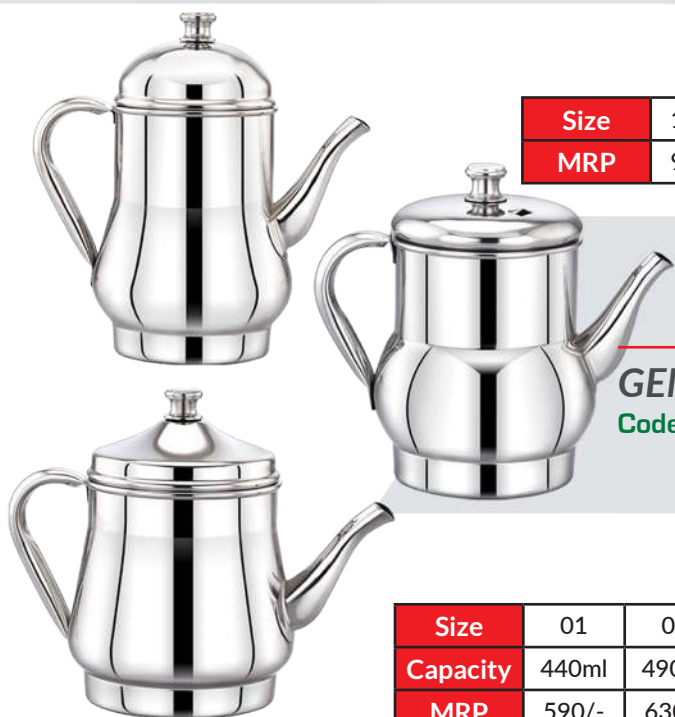
WAVE MILK JUG

Code : SI - 2062



|      |        |        |        |
|------|--------|--------|--------|
| Size | 1.2Ltr | 1.6Ltr | 2.0Ltr |
| MRP  | 920/-  | 975/-  | 1090/- |

|      |        |        |        |
|------|--------|--------|--------|
| Size | 1.2Ltr | 1.6Ltr | 2.0Ltr |
| MRP  | 1050/- | 1115/- | 1200/- |



GENIE POT

Code : SI - 2104

CLASSIC POT

Code : SI - 2125

ELEGANT POT

Code : SI - 2126

|          |       |       |
|----------|-------|-------|
| Size     | 01    | 02    |
| Capacity | 440ml | 490ml |
| MRP      | 590/- | 630/- |

|          |       |       |
|----------|-------|-------|
| Size     | 01    | 02    |
| Capacity | 370ml | 520ml |
| MRP      | 590/- | 645/- |

|          |       |       |
|----------|-------|-------|
| Size     | 01    | 02    |
| Capacity | 430ml | 460ml |
| MRP      | 590/- | 630/- |

## STAINLESS STEEL

TADKA PAN

Code : SI - 2099



|      |       |       |
|------|-------|-------|
| Size | 11cm  | 12cm  |
| MRP  | 730/- | 790/- |





REDISCOVER THE JOY OF COOKING



**STAINLESS STEEL**  
**APPLE PLAIN HOT POT**  
Code : HP - 173

|             |        |        |        |        |
|-------------|--------|--------|--------|--------|
| <b>Size</b> | 2.0Ltr | 4.0Ltr | 6.0Ltr | 8.0Ltr |
| <b>MRP</b>  | 2420/- | 2800/- | 3380/- | 4100/- |

**STAINLESS STEEL**  
**APPLE NAKSHI HOT**  
Code : HP -154



|             |        |        |        |        |
|-------------|--------|--------|--------|--------|
| <b>Size</b> | 2.5Ltr | 3.5Ltr | 5.0Ltr | 7.5Ltr |
| <b>MRP</b>  | 2620/- | 3050/- | 3780/- | 4550/- |



**STAINLESS STEEL**  
**ROYALE NAKSHI HOT POT**  
Code : HP - 153

|             |        |        |        |        |
|-------------|--------|--------|--------|--------|
| <b>Size</b> | 2.5Ltr | 3.5Ltr | 5.0Ltr | 7.5Ltr |
| <b>MRP</b>  | 2620/- | 3050/- | 3780/- | 4550/- |

**STAINLESS STEEL**  
**REEVA HAMMERED HOT POT**  
Code : HP - 269



|             |         |         |        |        |        |        |
|-------------|---------|---------|--------|--------|--------|--------|
| <b>Size</b> | 1.0 Ltr | 1.5 ltr | 2.5Ltr | 3.5Ltr | 5.0Ltr | 7.5Ltr |
| <b>MRP</b>  | 1100/-  | 1255/-  | 1490/- | 1805/- | 2180/- | 2750/- |



## STAINLESS STEEL Jewel Nakshi Hot Pot

DESIGN 1

Code : HP - 149



|      |        |        |        |        |
|------|--------|--------|--------|--------|
| Size | 2.0Ltr | 4.0Ltr | 6.0Ltr | 8.0Ltr |
| MRP  | 2355/- | 2840/- | 3590/- | 4555/- |



|      |        |        |        |        |
|------|--------|--------|--------|--------|
| Size | 2.0Ltr | 4.0Ltr | 6.0Ltr | 8.0Ltr |
| MRP  | 2355/- | 2840/- | 3590/- | 4555/- |

## STAINLESS STEEL Jewel Nakshi Hot Pot

DESIGN 3

Code : HP - 141



|      |        |        |        |        |
|------|--------|--------|--------|--------|
| Size | 2.0Ltr | 4.0Ltr | 6.0Ltr | 8.0Ltr |
| MRP  | 2355/- | 2840/- | 3590/- | 4555/- |

## STAINLESS STEEL Crown Nakshi Hot Pot

DESIGN 2

Code : HP - 148



## STAINLESS STEEL Crown Nakshi Hot Pot

DESIGN 4

Code : HP - 139

|      |        |        |        |        |
|------|--------|--------|--------|--------|
| Size | 2.0Ltr | 4.0Ltr | 6.0Ltr | 8.0Ltr |
| MRP  | 2355/- | 2840/- | 3590/- | 4555/- |



## Our Story

It all started by Late Mr. Milap Chand Jain - Founder of Samrat Housewares, he began a stainless steel polishing unit in the early '70s. Since then, he worked hard and has taken the company in good stead.

In 1995, his son Mr. Girish Jain inherited the business and gave it a new dimension. From then on, Samrat Housewares started manufacturing high-quality stainless steel cookware & kitchenware with the brand name Maxima serving global stainless steel demands.

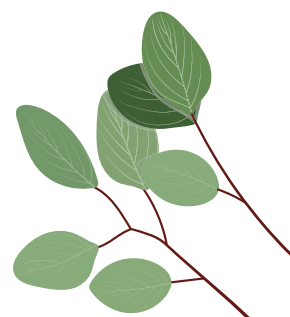
Today Samrat is delivering high-quality stainless steel cookware and kitchen-ware, which are exported to more than 30+ countries globally, including Europe, Africa, South East Asia, Middle East besides the US, UK, UAE, Australia and Canada.

Maxima's comprehensive product range augments the needs of a wide range of verticals that includes Triply Stainless Steel Pressure cookers, Triply cookware, Tableware, Water bottles, Insulated hotpots, Stainless Steel storage & containers and other customized products.

All products of Samrat bearing the Maxima stamp are intricately crafted and built to last for a long timewhile complimenting the refined tastes of the modern lifestyle.

Our team is spread across 3 locations within Chennai with over 400+ employees as research and development team, export team, sales & marketing support team and backend support team. Where our factory at Vanagaram is spread over 10,000 square meters with the massive capacity to produce 400 MT of Stainless steel products a month and our Vysarpadi unit has a similar production capacity of 100 MT a month. It is working rigorously to ensure quality whilst meeting statutory, regulatory, product requirements, and product quality control to ensure customers delight.

Maxima - Stainless steel  
For Healthy | Eco-friendly | Stylish



Stainless Steel  
**Maxima**<sup>®</sup>

REDISCOVER  
THE JOY OF COOKING



| Size | 2.5Ltr | 3.5Ltr | 5.0Ltr | 7.5Ltr |
|------|--------|--------|--------|--------|
| MRP  | 4825/- | 5325/- | 6285/- | 7140/- |

## STAINLESS STEEL Hot Pot

**ROYALE GOLD**

Code : HP - 134

## STAINLESS STEEL Hot Pot

**ROYALE**

Code : HP - 135



| Size | 2.5Ltr | 3.5Ltr | 5.0Ltr | 7.5Ltr |
|------|--------|--------|--------|--------|
| MRP  | 3720/- | 4070/- | 4880/- | 5590/- |

### About us

We, Samrat Houseware (P) Ltd, are a 50-year old company and one of the leading manufacturers of Stainless Steel Triply Cookware, Tableware, Kitchenware, Hotelware, and Houseware products under the brand name **Maxima**. With the state-of-the-art infrastructure facilities and technology, we produce and supply high quality products across India through our distribution network. Combined with quality and matching the product designs to the prevailing trends, our products are well known for its **Elegance, Style and Durability**.

Manufactured & Marketed by

**SAMRAT HOUSEWARE (P) LTD**

1/ 99 Sivabootham Village  
Poonamallee High Road | Vanagaram  
Chennai - 600095 | Tamil Nadu | India

☎ +91 44 45525545  
☎ +91 7550011500  
✉ sales@samrat.co.in

📘 maximaworldofficial  
📷 maximaworldofficial  
🌐 www.maximaworld.in