



DETAIL K2 INC.

DK2 POWER USA
4301 S Valley View Blvd STE 10-11
Las Vegas, NV 89103
1-702-331-5353

DETAIL K2, INC.
1080 Clay Avenue Unit 2
Burlington, Ontario, Canada L7L0A1

DK2 USA EAST
6245 Industrial Parkway
Whitehouse, OH 43571

PARTS AND SERVICE 702-331-5353 OR WWW.DK2POWER.COM CONTACT US

503 533 UNIVERSAL VACUUM KIT

INSTRUCTIONS TO ADD UNIVERSAL VACUUM KIT TO MODELS OPC503 AND OPC533

**REMINDER – ENGINE IS HOT
DON'T DRAPE YOUR HOSE ON THE ENGINE AND MELT IT.**



**OPC533 6.5 HP
RESIDENTIAL TOW**



**OPC503 7 HP
ATV TOW**

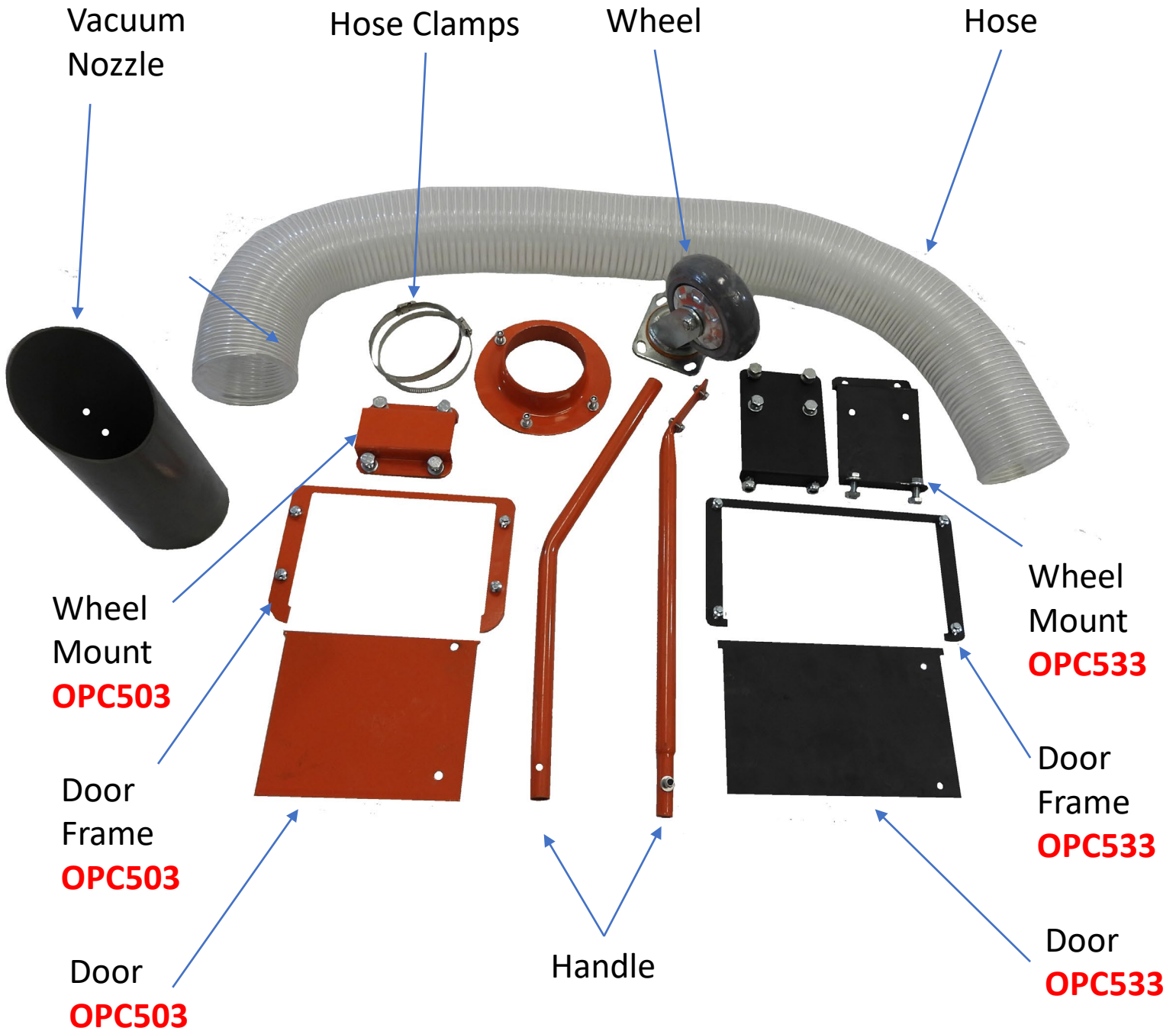
VACUUM KIT ONLY – CHIPPERS NOT INCLUDED

Step 1 -

INSPECT ALL PARTS. CALL 702-331-5353 FOR ANY MISSING PARTS.

Please note:

- Door and wheel mounts for OPC503 are ORANGE
- Door and wheel mounts for OPC533 are BLACK





•OPC533 INSTRUCTIONS

OPC533 INSTRUCTIONS

Install Vacuum Door



1. Remove bolts and Feed Chute



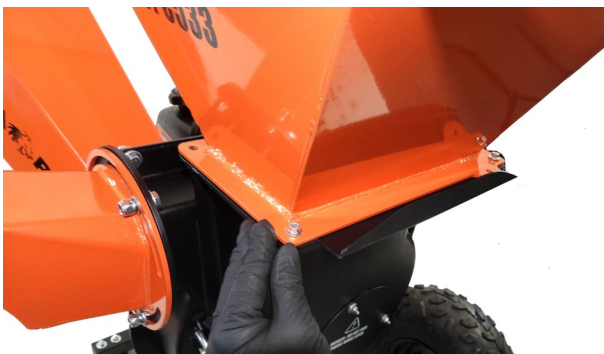
2. Clean the area of all debris



3. Align holes and Door Frame



4. Install Door with flange up



5. Remount the feed chute and bolts



6. Door slides in-out freely

OPC533 INSTRUCTIONS

Install Vacuum Hose



1. Open Chipper Chute



2. Remove rear plate



3. Install the Hose Ring



4. Tighten hardware securely



5. Install Hose and Hose clamp

OPC533 INSTRUCTIONS

Install Vacuum Hose Handle and Nozzle



1. Attach Nozzle with Hose Clamp



2. Assemble handle sections



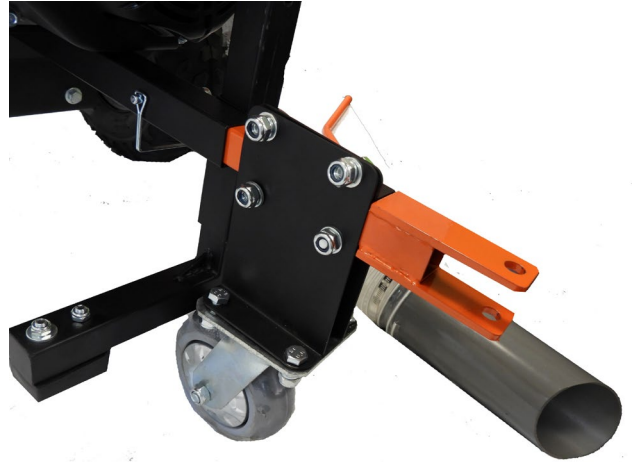
3. Bolt the handle to the Nozzle securely.

OPC533 INSTRUCTIONS

Install Trolley Wheel



1. Bolt wheel mounts to tow bar



2. Bolt Wheel to Wheel Mounts



3. Flip UP for tow, Down for Trolley



4. Run on high RPM with slide door Closed to operate the Vacuum.

NOTICE - Always wear safety gear and be mindful of walking in front of the chip chute when running the vacuum. Always keep others clear of work area during operation. Only vacuum leaves and small twigs.



•OPC503 INSTRUCTIONS

OPC503 INSTRUCTIONS

**DISCONNECT THE KEY SWITCH
WIRING HARNESS.**

**PROTECT THE WIRING
WHEN REMOVING THE
TOP FEED CHUTE**



OPC503 INSTRUCTIONS

Install Vacuum Door



1. Remove bolts and Feed Chute



2. Remove chute and Clean the mounting area of all debris



3. Align holes and Door Frame



4. Install Door with flange DOWN and hole to the left side.



5. Remount the feed chute and bolts



6. Door slides in-out freely

OPC503 INSTRUCTIONS

Install Vacuum Hose

1. TAKE CARE TO NOT DROP HARDWARE INTO THE CHIPPER CHAMBER ONCE THE BACK COVER IS REMOVED.



2. Remove rear plate



3. Install the Hose Ring



4. Tighten hardware securely



5. Install Hose and Hose clamp



6. Tighten securely

OPC503 INSTRUCTIONS

Install Hose Handles and Nozzle



1. Assembly handle sections together and handle to the Nozzle securely with provided bolts.



2. Attach Nozzle with Hose Clamp

OPC503 INSTRUCTIONS

Install Trolley Wheel



1. BEFORE ASSEMBLY NOTE BALL HITCH IS FACING UP AND THE TROLLY WHEEL IS DOWN
Flip UP for tow, Down for Trolley



2. Bolt Wheel to Wheel Mount



3. Run on high RPM with slide door Closed to operate the Vacuum.

NOTICE - Always wear safety gear and be mindful of walking in front of the chip chute when running the vacuum. Always keep others clear of work area during operation. Only vacuum leaves and small twigs.



PLEASE DO NOT RETURN TO THE STORE

YOU HAVE A 1 YEAR WARRANTY AND DK2 WILL REPLACE A DEFECTIVE PART FOR FREE

CALL US AT 702-331-5353 FOR FAST WARRANTY PARTS AND QUESTIONS

WHAT IS COVERED – 3YR ENGINE AND 1 YEAR COMMERCIAL WARRANTY INCLUDED

Detail K2 Inc. warrants to the original purchaser that product will be free and clear of manufacturing defects in workmanship and materials under normal use and service for a period of one (1) year from the date of the original purchase. If within one (1) year from the original date of purchase this product fails due to defect in material or workmanship, Detail K2 will repair, replace, or supply any covered defective part at our option. DK2 POWER is 1-year parts only warranty no labor. Kohler 3 year warranty is PARTS and LABOR.

Upon expiry of one (1) year, Detail K2 will have no further liability related to the product. Detail K2 does not authorize any party, including its authorized distributors or dealers, to offer any other warranty on behalf of Detail K2 Inc.

SERIAL NUMBERS MUST BE REGISTERED ONLINE AT WWW.DK2POWER.COM, WARRANTY NON-TRANSFERABLE.

KOHLER ENGINES – KOHLER CH SERIES ENGINES COMMERCIAL 3 YR PARTS AND LABOR WARRANTY

KOHLER ENGINES – KOHLER SH SERIES ENGINES RESIDENTIAL 2 YR PARTS AND LABOR WARRANTY

see your Kohler manual for specific warranty.

DK2– 1-Year parts only, no labor. 3-year commercial Kohler warranty.

THIS WARRANTY DOES NOT COVER OR APPLY TO:

Damage to the product due to misuse, mishandling and abuse

(b) Improper installation, maintenance and storage

(c) Expendable parts such as nuts and bolts, pins and springs, wiring and switch components, hydraulic hoses and fittings, cutting teeth, cutting chains, cutting blades, throttles, belts and tires.

(d) Normal wear and tear

(e) Consequential damage & incidental damages such as damage to persons or property

(f) Used Vacuum hose kits and parts are excluded from all warranty.

PROCEDURE FOR OUTDOOR POWER EQUIPMENT WARRANTY

Within the one (1) year warranty period, the purchaser of the product can CALL 702-331-5353 DK2POWER or contact us on www.DK2Power.com. Notify us of the claimed defect and provide proof of original purchase. At this time the validity of the claim will be determined, and if approved replacement parts will be issued. No returned product will be accepted under warranty unless accompanied by an RGA# issued by Detail K2 Inc.

DAMAGED FREIGHT

Damage to your product caused by freight mishandling is NOT covered under warranty. If your freight arrives damaged, REFUSE it. **Inspect your product when it arrives**, otherwise if you accept it, you will be responsible for filing any freight claims with the delivery company. Dk2 warranty excludes damage to product.

RETURNS BEFORE GAS AND OIL

Follow the return policy from the retailer you purchased the equipment from.

RESOLUTION FOR A DEFECTIVE PRODUCT AFTER GAS AND OIL HAS BEEN ADDED.

Call DK2Power at **702-331-5353** in Las Vegas between 8am-4pm M-F Pacific Time.