



STREAMLine

4 Foot Linear LED Light

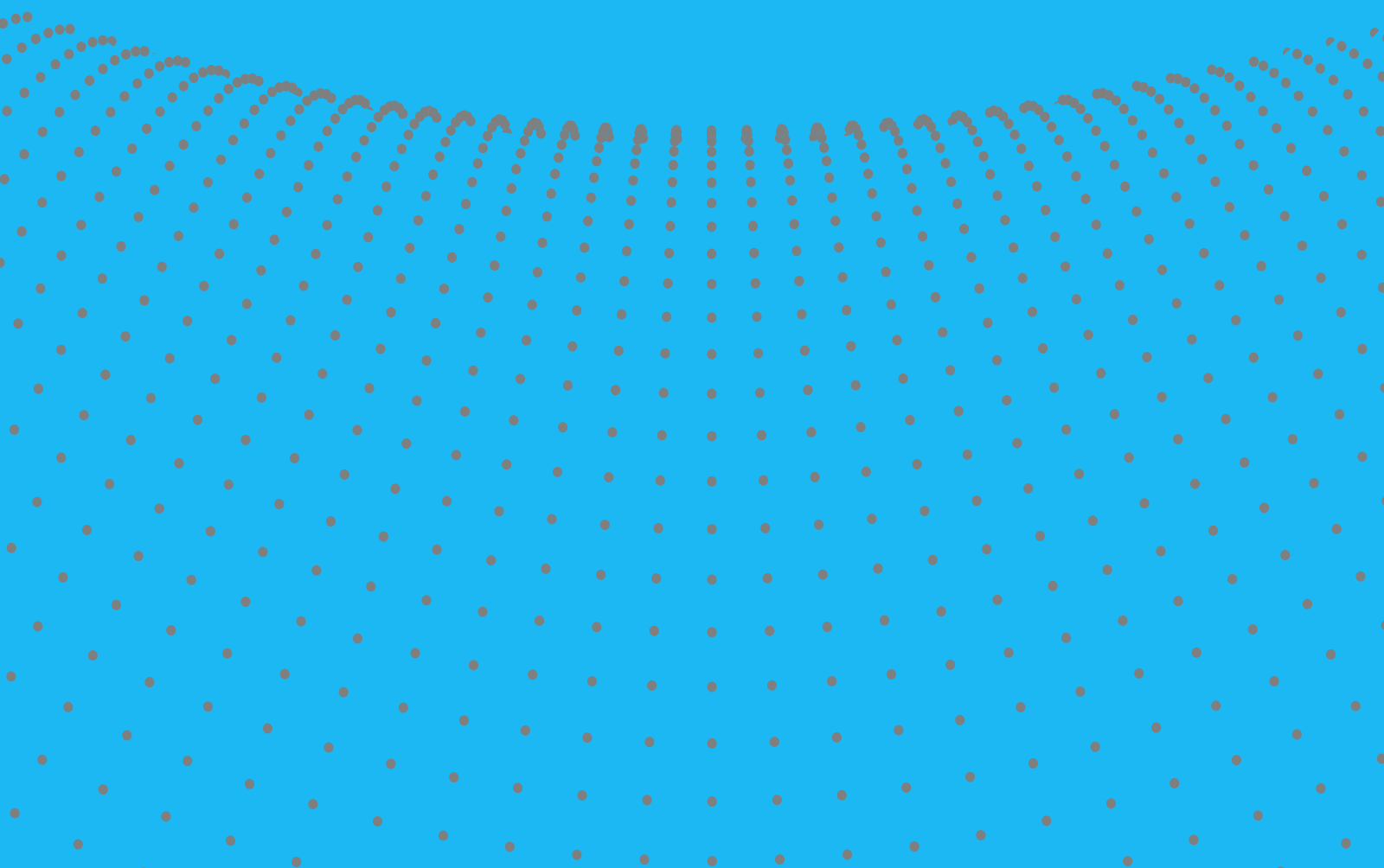
VERSATILE, MODULAR DESIGN

INDUSTRY LEADING COMPONENTS

FAST, EASY INSTALLATION

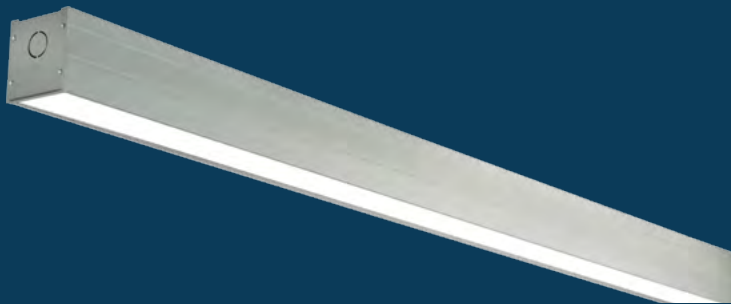
RAPID PAYBACK

LONGTERM SAVINGS



COMBINES POWERFULLY BRIGHT
LEDS WITH HIGHLY EFFICIENT
LIGHT-SMOOTHING
OPTICS

TO DELIVER
SUPERIOR ILLUMINATION
AND ENERGY SAVINGS
YEAR AFTER YEAR.



Surface or Suspension

LUMENS	4,600
LUMENS/W	115
WATTS	40
VOLTAGE	120-277V
KELVIN	4,000
CRI	80+

The StreamLine Linear LED Light is an elegant, low-maintenance, energy-efficient alternative to traditional 4-foot fluorescent fixtures. Its smooth, ambient light output complements any commercial, municipal or residential setting; and its slim rectangular form offers versatility and easy installation to enable a wide range of custom configurations.

Each fixture comes with an external UL listed isolated power supply, plus your choice of mounting hardware. The Streamline is DLC Qualified to ensure rebate eligibility, rapid payback time, and long-term value.



STREAMLine

EASE OF INSTALLATION

- Elegant, modular design lends itself to endless custom configurations.
- Cable suspension or ceiling surface mounting hardware available.
- Fast, easy wiring with 0-10VDC dimming compatibility.

QUALITY OF LIGHT

- 4000K neutral white light with CRI >80 mimics daylight.
- Bright, clean light without the flicker, hum, or strobing effects of fluorescent lamps.
- High quality diffuser eliminates glare and hot spots for smooth, ambient illumination.

LONGTERM RELIABILITY

- UL listed and DLC qualified to ensure safety and quality performance.
- Advanced thermal management system promotes heat dissipation for longer lifespan.
- Lasts ±50,000 maintenance-free hours, backed by LED Waves' 5 year warranty.



STREAMLine

FLUSH Single



40 Watts 4,600 lumens

LM1-40-W4000K-FL-S
LM1-40-W5000K-FL-S
LM1-30-W4000K-FL-S
LM1-30-W5000K-FL-S

FLUSH Multiple



40 Watts 4,600 lumens

LM1-40-W4000K-FL-M
LM1-40-W5000K-FL-M
LM1-30-W4000K-FL-M
LM1-30-W5000K-FL-M

SUSPENSION Single



40 Watts 4,600 lumens

LM1-40-W4000K-SU-S
LM1-40-W5000K-SU-S
LM1-30-W4000K-SU-S
LM1-30-W5000K-SU-S

SUSPENSION Multiple



40 Watts 4,600 lumens

LM1-40-W4000K-SU-M
LM1-40-W5000K-SU-M
LM1-30-W4000K-SU-M
LM1-30-W5000K-SU-M



STREAMLine

Feature <<

- **Appearance**

Beautiful rectangular or customized design is available.

- **Mounting: single or chain-hanged**

It can be cable-suspended or surface-mounted. And it can be chain-hanged like a bar.

- **Energy saving**

High efficiency, environmentally friendly, easy to maintain.

- **Safe**

External isolated power supply is relatively safe.

- **Warranty**

UL/DLC: 5 years warranty, 50 000 hrs rated life.

CE/RoHS: 3 years warranty, 50 000 hrs rated life.

M

Model No.

V

Voltage

W

Wattage

LM

Luminous Flux

PF

Power Factor

Ra

CRI

Beam Angle

L

Length

UL/DLC Series

LML1-40-XX

AC100-277V

40W

4600LM±10%

>0.9

>80

105°

4FT

Item

L(mm)

W(mm)

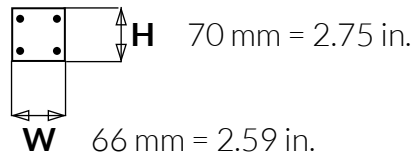
H(mm)

4FT

1183

66

70



STREAMLine



SUSPENSION

Supported by adjustable cables for a modern, weightless look.

FLUSH

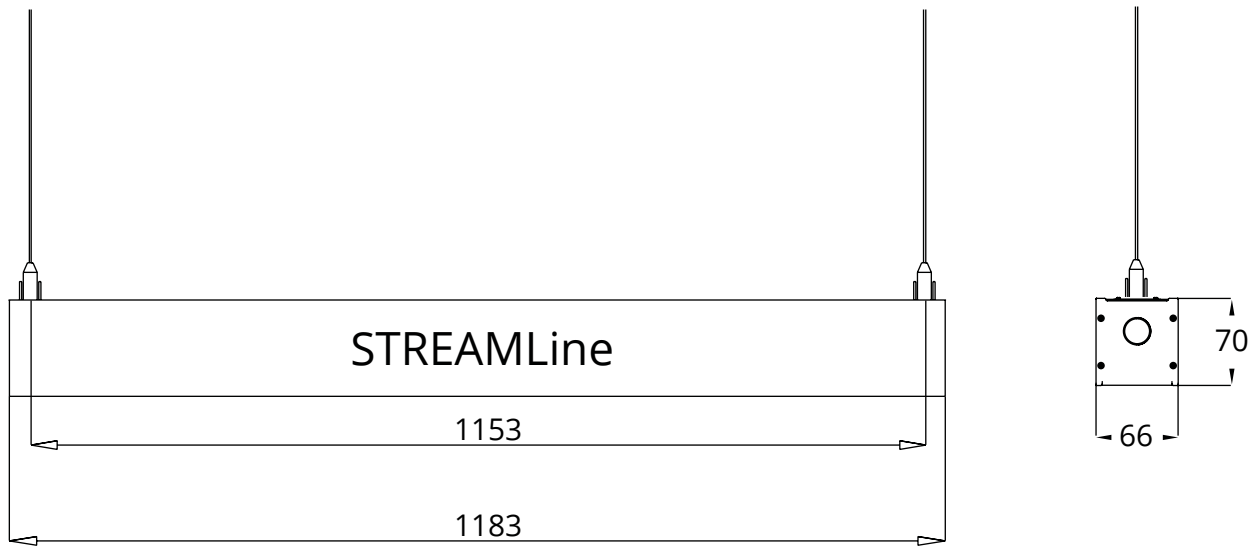
Mounted directly against the ceiling; good for low ceilings and daisy chaining.

Features:

- **Versatile Style**
Diffuse, ambient light combined with a modular design .
- **Energy Savings**
Delivers an outstanding 115 lumens per Watt.
- **Superior Heat Dissipation**
Aluminum printed circuit board and heat sink for passive cooling.
- **Low Maintenance**
Lasts $\pm 50,000$ hours to L70, protected by a 5 year warranty.



LED Waves StreamLine LED Linear



Product Length	L(mm)	D(mm)	H(mm)
4FT	1183+/-1	66+/-1	70+/-1

3. Product Specification Electrical Characteristics

• Humidity

Operating 10% - 80%
Storage 10% - 80%

• Temperature

Operating 10% - 80%
Storage 10% - 80%

Input Voltage: AC100-277V 50/60Hz

Operating 10% - 80%
Storage 10% - 80%

UL, DLC-StreamLine LED Linear

UL Item#	Wattage	LED Q'TY	CCT	Luminous Flux	Efficacy (LPW)	Beam Angle	Cover	Dimmable
LML1-40-XX	40W	144pcs 2835LEDs	4000K	4600lm	115	105°	Frosted	0-10V
			5000K	4600lm	115			

