

# SKYLIGHT

ULTRA THIN LED PANEL

INDUSTRY  
LEADING  
COMPONENTS

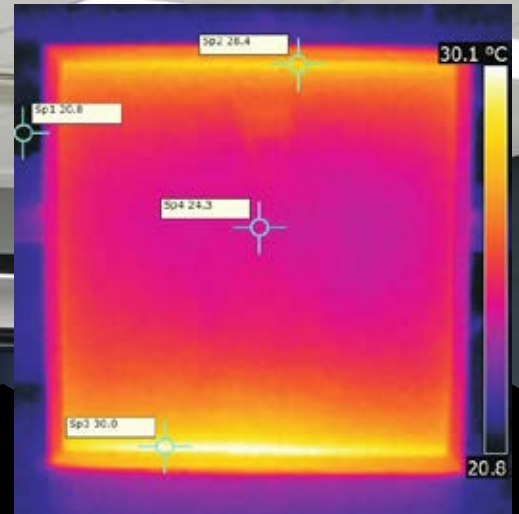
QUICK & EASY  
INSTALLATION

The most lumens for your money.  
What the professionals use.

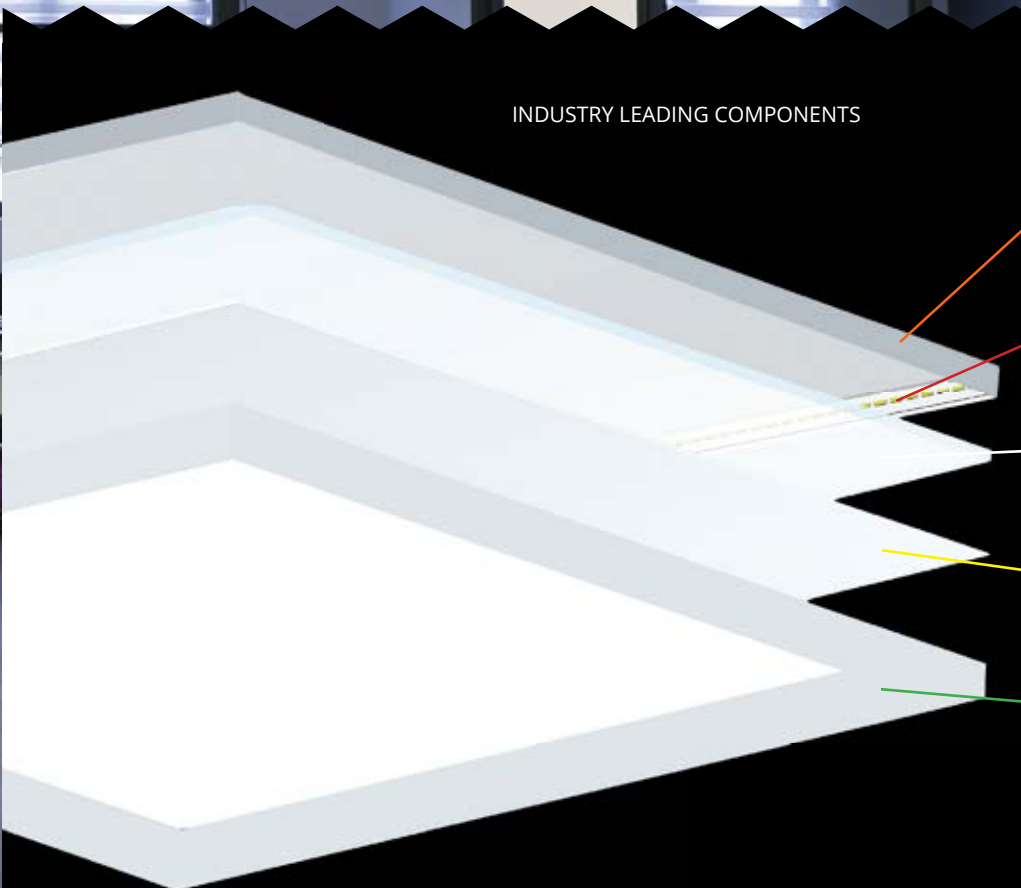


# Skylight

ULTRA THIN LED PANEL



INDUSTRY LEADING COMPONENTS



**ALUMINUM HEAT SINK**

Features an aluminum backplate to dissipate heat and prolong the lifespan of the LEDs.

**HIGH QUALITY SAMSUNG 2835 CHIPS**

.5W chips provide superior lighting performance and energy savings.

**PMMA LIGHT PANEL GUIDE (LPG)**

Highly efficient plate directs the light downward while scattering it evenly.

**HIGH-TRANSMITTANCE DIFFUSER**

Eliminates glare and subtly obscures the light source.

**5 YEARS WARRANTY**

**UV SOLID TECHNOLOGY PCB**

**PATENTED FRAME DESIGN**

Solid, screw-free aluminum frame, UV resistant PCB coating.

**IP44 RATED PANEL FRAME**

Suitable for dry or damp locations.

# Skylight

ULTRA THIN LED PANEL

COMBINES POWERFULLY BRIGHT  
LEDS WITH HIGHLY EFFICIENT  
LIGHT-SMOOTHING OPTICS

TO DELIVER  
SUPERIOR ILLUMINATION  
AND ENERGY SAVINGS  
YEAR AFTER YEAR.



2 x 2

4,071

LUMENS

37

WATTS

110

LUMENS/W



1 x 4

3,949

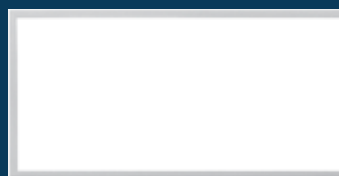
LUMENS

37

WATTS

107

LUMENS/W



2 x 4

7,289

LUMENS

62

WATTS

118

LUMENS/W

This uniquely bright yet smooth light output starts with high-output leds, placed sideways along the interior of the panel. A laser printed light guide refracts the beams down towards a high-transmittance diffuser, which eliminates glare and spreads the light out evenly.

Combined with an extremely slim, installation-friendly form (approx. half an inch tall), the Skylight 2.0 is perfect for hospitals, classrooms, offices, and any other work space requiring high quality ambient lighting.

# Skylight

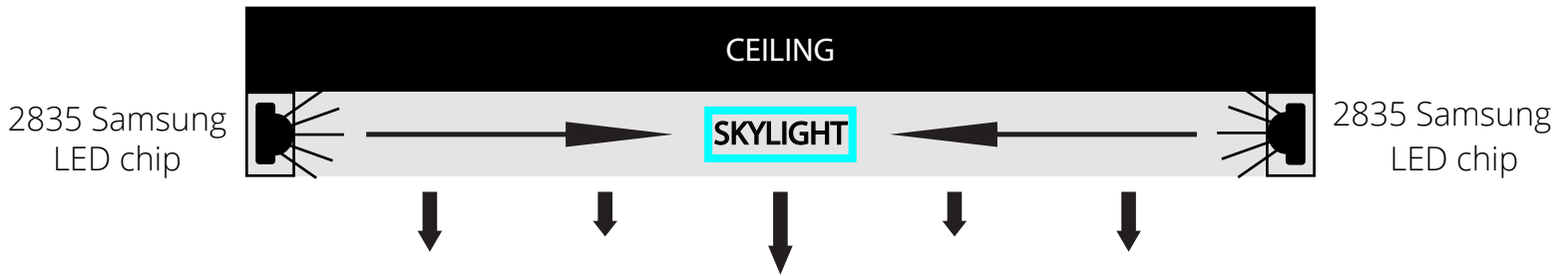
ULTRA THIN LED PANEL

THE FIXTURE

## ULTRA-THIN

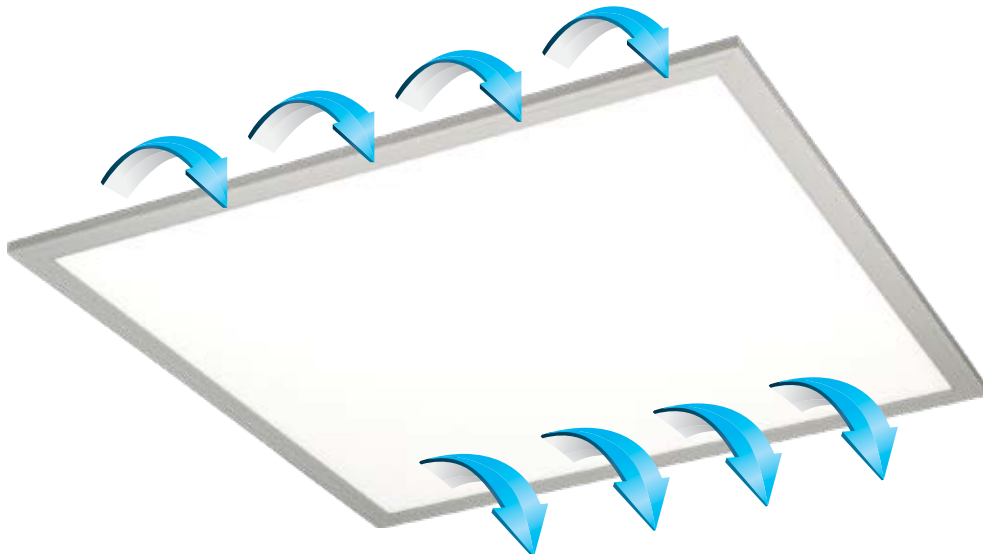
Skylight lends itself to virtually all ceiling installations; (even those with limited space).  
Installation takes 5 minutes:  
Simply place Skylight within a drop ceiling grid, and connect the power supply to the line voltage.

### QUALITY OF LIGHT



- Sideways-facing LEDs  
+ Light guide and diffuser  
= soft, comfortable, glare-free light

### HEAT DISSIPATION



# Skylight

ULTRA THIN LED PANEL

THE FIXTURE

## THE SKYLIGHT 2x2



Ultra-Thin LED Panel Light

**2'X2'**

37 Watts 4,071 lumens

## THE SKYLIGHT 1x4



Ultra-Thin LED Panel Light

**1'X4'**

37 Watts 3,949 lumens

## THE SKYLIGHT 2x4



Ultra-Thin LED Panel Light

**2'X4'**

62 Watts 7,289 lumens

# Skylight

ULTRA THIN LED PANEL

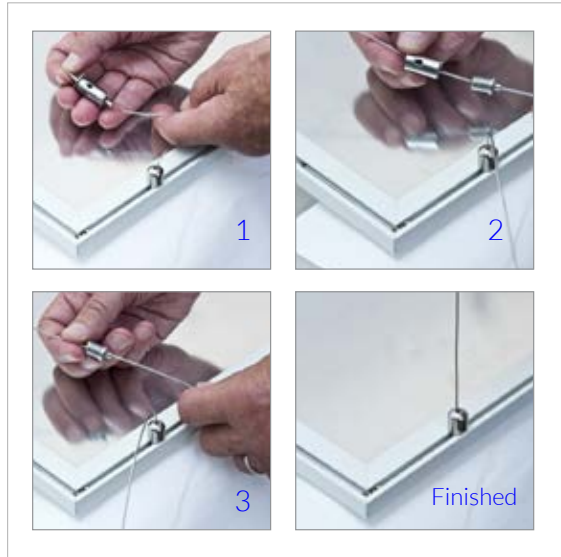
## ACCESSORIES



SUSPENSION Kit (4 pcs)

- 3M
- 6M

CEILING



SUSPENSION Kit **(applied)**

Available in :  
 3M (10') and 6M (20') length standard.  
 Can be hand adjusted in the field.  
 Custom length can be special ordered.



FLUSH MOUNTED Kit (4 pcs)

- 1'x4'
- 2'x2'
- 2'x4'

CEILING



FLUSH MOUNTED Kit **(applied)**

To be used on ceilings where the unit is flush mounted less than 2" from the ceiling.  
 Good for existing work.



# Skylight

ULTRA THIN LED PANEL

## ACCESSORIES



Recessed mount for dry wall

- 1'x4'
- 2'x2'
- 2'x4'

CEILING



Recessed mount for dry wall **(applied)**

DRYWALL RECESSED MOUNT  
Installation Panel is inserted within a frame that rests within a drywall ceiling cutout. Great for new constructions.

## ACCESSORIES - CEILING / WALL



STAND OFF BRACKET  
Mounting (Kit-4pcs)

CEILING / WALL



STAND OFF BRACKET  
Mounting (Kit) **(applied)**

Stand OFF brackets good for existing work. Total depth is less than 2" from the ceiling.

# Skylight

ULTRA THIN LED PANEL

## ACCESSORIES



FLUSH MOUNTING Kit (4 pcs)

- 1'x4'
- 2'x2'
- 2'x4'

CEILING



FLUSH MOUNTING Kit **(applied)**

Spring loaded clips secure the panel and frame in place within a ceiling cutout. Great for new constructions.



WALL MOUNTING Kit "Z"

WALL \*



WALL MOUNTING Kit "Z" **(applied)**

For dry wall ceilings new construction.



# Skylight

ULTRA THIN LED PANEL

## EMERGENCY BACKUP DRIVER



Emergency battery driver for Skylight 2.0

ADDITIONAL POWER ACCESSORIES

EMERGENCY  
BACKUP DRIVER



Emergency testing equipment (included)

ADDITIONAL POWER ACCESSORIES



LedWaves **Waves Of The Future**

**Customer safety and satisfaction is paramount at LED Waves.**

Please do not hesitate to contact us

TOLL-FREE at  
**1-800- 986-0169**

Professional grade technical support  
and Consultations

**LED Waves** is a Service Disabled Veteran Owned Small Business.

