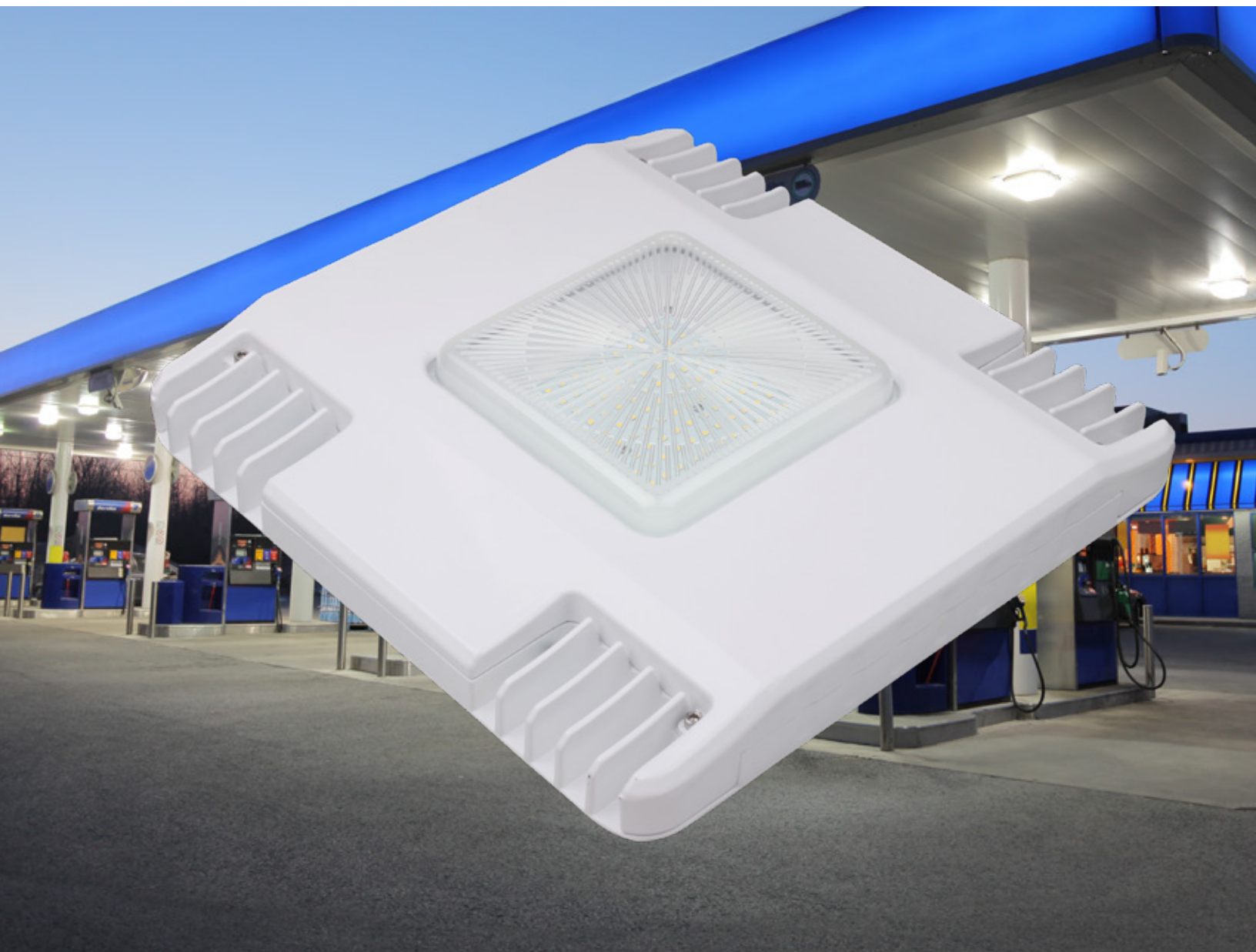


# Gas Station



LED lighting will make your business pop! A visually appealing, well-illuminated environment ensures safety and will attract more customers. LED Waves Gas Station Canopy Lights are ideal for:

- GAS STATIONS
- TUNNELS
- FACTORY & WAREHOUSE FLOORS
- OUTSIDE & UNDERGROUND PARKING FACILITIES



# Gas Station

SKUs	Watts	Lm/W	Lumens	Kelvin	CRI	# of LED	Viewing °	Voltage	Driver	Driver Type
LW-GS-100W-SPB-5000K	100	110	11,000	5,000	>70	112	110°	100-277VAC	Mean Well	CEN-100-48
LW-GS-130W-SPB-5000K	130	112	14,500	5,000	>70	140	110°	100-277VAC	Mean Well	CEN-130-48
LW-GS-150W-SPB-5000K	150	108	16,200	5,000	>70	168	110°	100-277VAC	Mean Well	CEN-150-48

SKUs	EQUIVALENTS				Chips	LxWxD mm
	HID	CFL	MHL	HPS		
LW-GS-100W-SPB-5000K	300W	200W	300W	300W	PHILIPS LUMILEDS(high CRI)	245x113x80
LW-GS-130W-SPB-5000K	400W	250W	400W	400W	PHILIPS LUMILEDS(high CRI)	300x138x87
LW-GS-150W-SPB-5000K	500W	400W	500W	500W	PHILIPS LUMILEDS(high CRI)	300x138x87

**Specifications common to all**

Operating Temperature	-20°C TO 45°C	Chips	3030 2D (1.5W)
Operating Humidity	20% -70% RH	Materials	Aluminium
Storage Humidity	10% -75% RH	Safety Certification	UL, cUL
Warranty	5 Years	Performance Certification	DLC
Applications	Indoor / Outdoor	Power Factor	> 0.9
Cover	Stripe lens	IP Rating	IP65
Hertz	50/60Hz	Housing Color	White

**Applications**

- Outdoor & Indoor Commercial Area Lighting
- Gas Stations
- Factories & Warehouses
- Outdoor area lighting
- Outdoor & Underground Parking Facilities
- Large Areas Requiring Safe and Well-illuminated Lighting

**Advantages**

- Easy Installation, Universally Accepted Surface Mounts
- Powerful, Long-lasting, Environmentally Friendly LED illumination Reduces Energy Usage by 70%
- Virtually Maintenance-free
- Promotes Customer & Employee Safety
- Naturally Directional Casts Avoids 180° Direct Lighting Loss Associated with Ambient Light



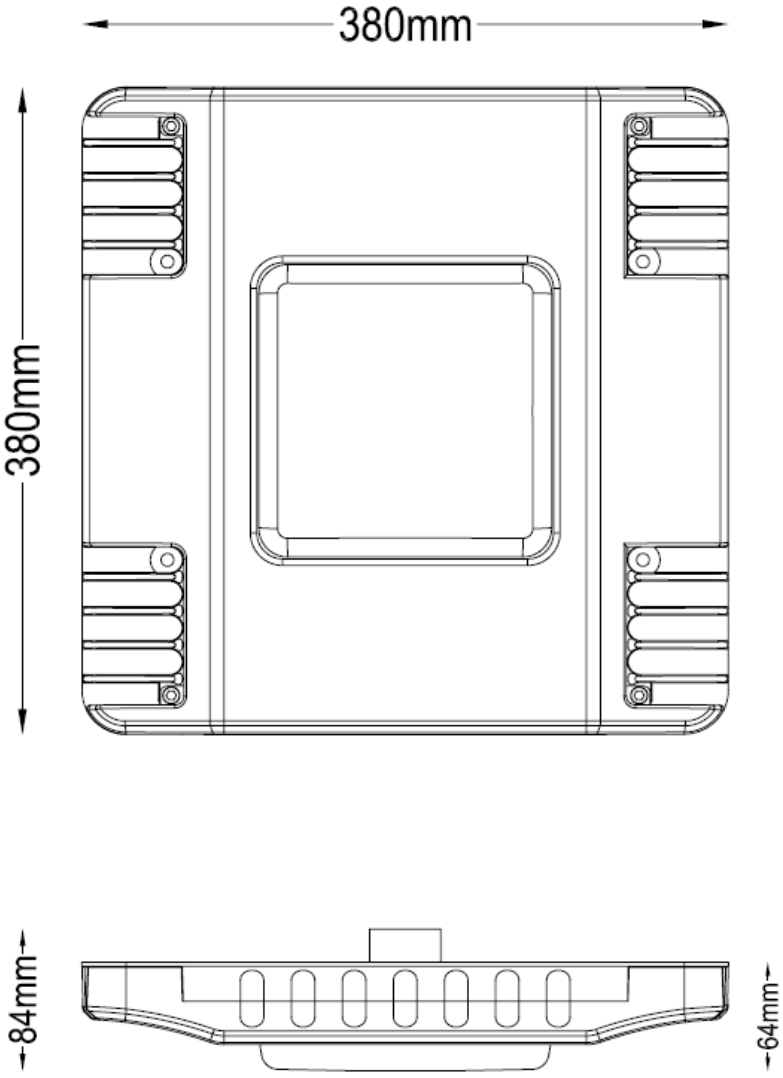
# Gas Station

100W

LED Waves Canopy Gas Station Lights can maximize the presence of your facility and brand. Engineered for use in gas and service stations, outside and underground parking lots, factories and warehouses any commercial area requiring a large cast for optimum safety and security.

These long-lasting LEDs install in seconds, offer dramatic energy savings and are virtually maintenance-free.

Canopy Gas Station LED luminaires are available as 100w, 130w and 150w; always in stock for prompt and hassle-free delivery.



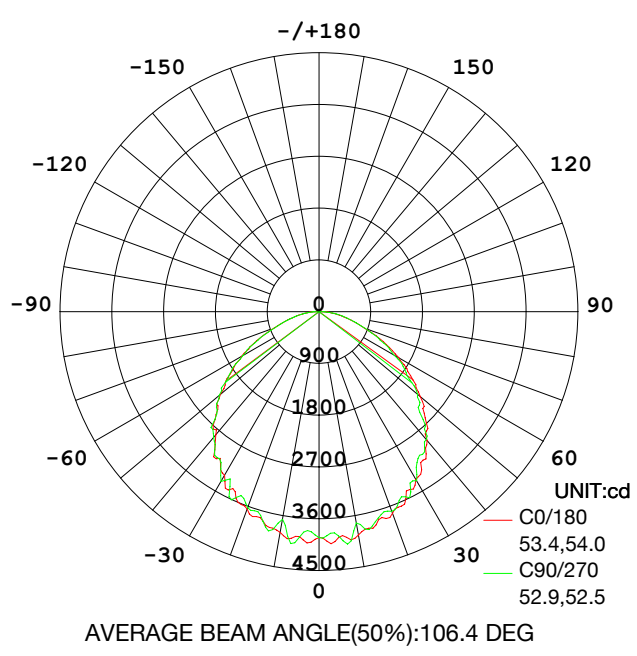
# Gas Station

100W

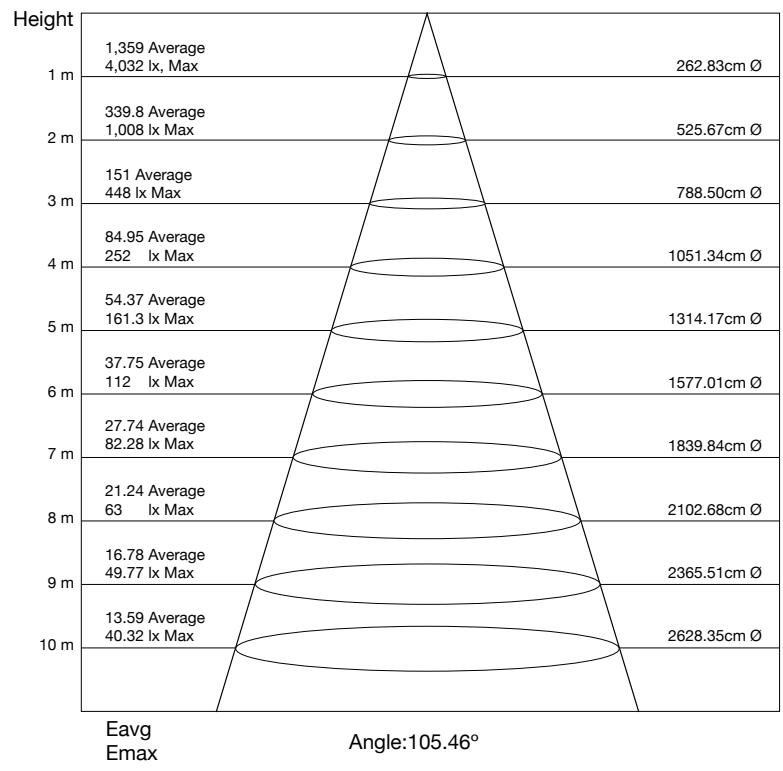
DATA OF LAMP		PHOTOMETRIC DATA		Ett: 105.64 lm/W	
		lmax (cd)	4,069	*S / MH (C0/180)	1.25
NOMINAL POWER (W)	100	****LOR (%)	100	*S / MH (C90/270)	1.25
RATED VOLTAGE (V)	120	TOTAL FLUX (lm)	10,691	η UP, DN (C0-180)	0.2, 50
NOMINAL FLUX (lm)	10,691.2	CIE CLASS	DIRECT	η UP, DN (C180-360)	0.2, 49.7
LAMPS INSIDE	1	η up (%)	0.3	**CIBSE SHR NOM	1.25
TEST VOLTAGE (V)	120	η down (%)	99.7	***CIBSE SHR MAX	1.35

- \* Spacing Mounting Height Ratio (S/MH)  
i.e. for example if the fixtures are 10ft high the recommended spacing would be 12.5ft (180°)
- \*\* Spacing Height Ratio Nominal  
i.e. for example if the fixtures are 10ft high the recommended spacing would be 12.5ft (90/270°)
- \*\*\* Spacing Height Ratio Maximum
- \*\*\*\* Light Output Ratio

## LUMINOUS INTENSIFY DISTRIBUTION DIAGRAM



## Flux out: 7,519 lm



The Curves indicate the illuminated area and the average of illumination for the luminaire at different distances.



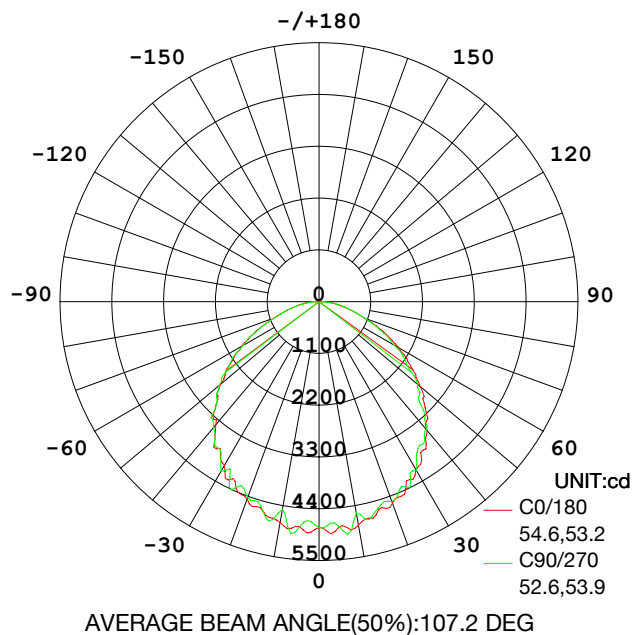
# Gas Station

130W

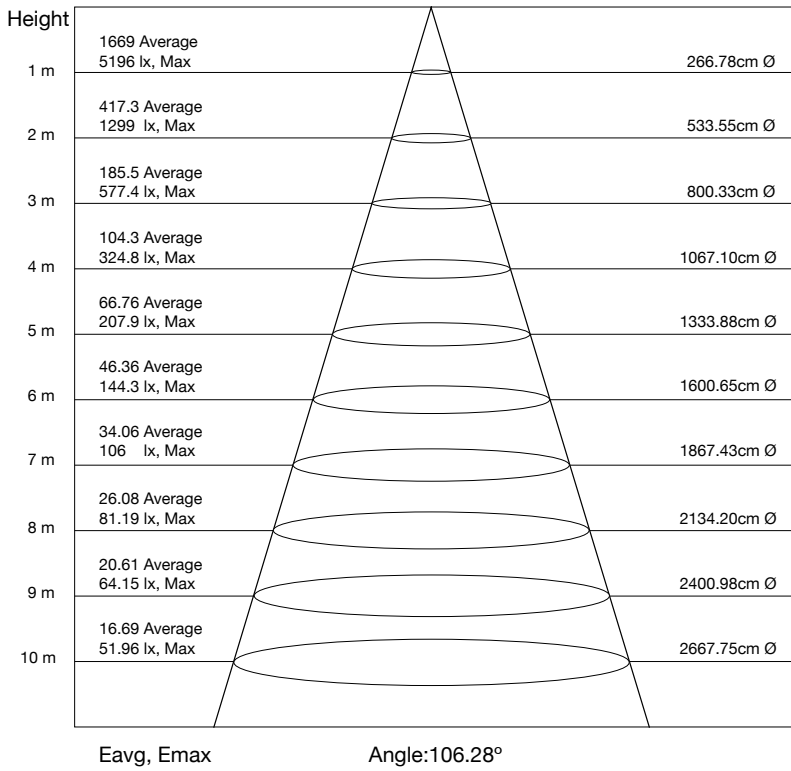
DATA OF LAMP		PHOTOMETRIC DATA		Ett: 104.60 lm/W	
		Imax (cd)	5,245	*S / MH (C0/180)	1.31
NOMINAL POWER (W)	130	****LOR (%)	100	*S / MH (C90/270)	1.29
RATED VOLTAGE (V)	120	TOTAL FLUX (lm)	13,796	η UP, DN (C0-180)	0.2, 50.1
NOMINAL FLUX (lm)	13,795.5	CIE CLASS	DIRECT	η UP, DN (C180-360)	0.2, 49.6
LAMPS INSIDE	1	η up (%)	0.3	**CIBSE SHR NOM	1.25
TEST VOLTAGE (V)	120	η down (%)	99.7	***CIBSE SHR MAX	1.35

- \* Spacing Mounting Height Ratio (S/MH)  
i.e. for example if the fixtures are 10ft high the recommended spacing would be 13.1ft (180°)  
i.e. for example if the fixtures are 10ft high the recommended spacing would be 12.9ft (90/270°)
- \*\* Spacing Height Ratio Nominal
- \*\*\* Spacing Height Ratio Maximum
- \*\*\*\* Light Output Ratio

## LUMINOUS INTENSIFY DISTRIBUTION DIAGRAM



## Flux out: 9,934 lm



The Curves indicate the illuminated area and the average of illumination for the luminaire at different distances.



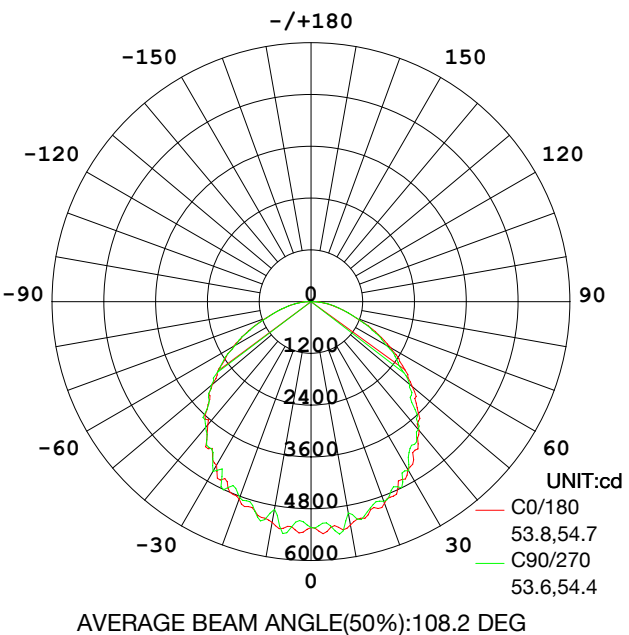
# Gas Station

150W

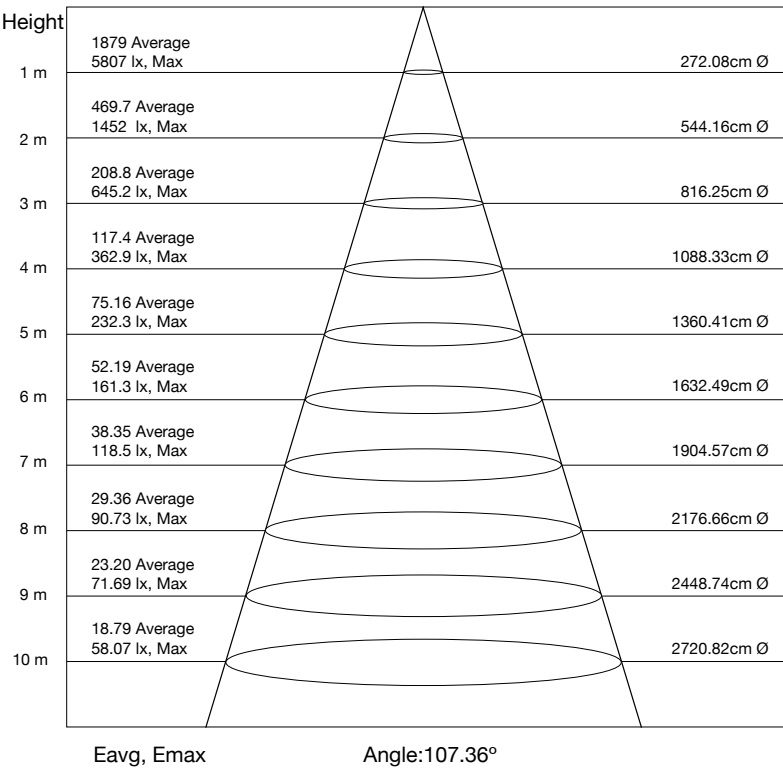
DATA OF LAMP		PHOTOMETRIC DATA		Ett: 104.73 lm/W	
		Imax (cd)	5,843	*S / MH (C0/180)	1.27
NOMINAL POWER (W)	150	****LOR (%)	100	*S / MH (C90/270)	1.29
RATED VOLTAGE (V)	120	TOTAL FLUX (lm)	15,531	η UP, DN (C0-180)	0.2, 50.3
NOMINAL FLUX (lm)	15,530.8	CIE CLASS	DIRECT	η UP, DN (C180-360)	0.2, 49.4
LAMPS INSIDE	1	η up (%)	0.3	**CIBSE SHR NOM	1.25
TEST VOLTAGE (V)	120	η down (%)	99.7	***CIBSE SHR MAX	1.35

- \* Spacing Mounting Height Ratio (S/MH)  
i.e. for example if the fixtures are 10ft high the recommended spacing would be 12.7ft (180°)  
i.e. for example if the fixtures are 10ft high the recommended spacing would be 12.9ft (90/270°)
- \*\* Spacing Height Ratio Nominal
- \*\*\* Spacing Height Ratio Maximum
- \*\*\*\* Light Output Ratio

### LUMINOUS INTENSIFY DISTRIBUTION DIAGRAM



### Flux out: 11,183 lm



The Curves indicate the illuminated area and the average of illumination for the luminaire at different distances.



# Gas Station

LedWaves *Waves Of The Future*

**Customer safety and satisfaction is paramount at LED Waves.**

Please do not hesitate to contact us

TOLL-FREE at  
**1-800- 986-0169**

Professional grade technical support  
and Consultations

**LED Waves** is a Service Disabled Veteran Owned Small Business.

