



SKYLIGHT^{2.0}

ULTRA THIN LED PANEL LIGHT

HIGH LUMEN OUTPUT

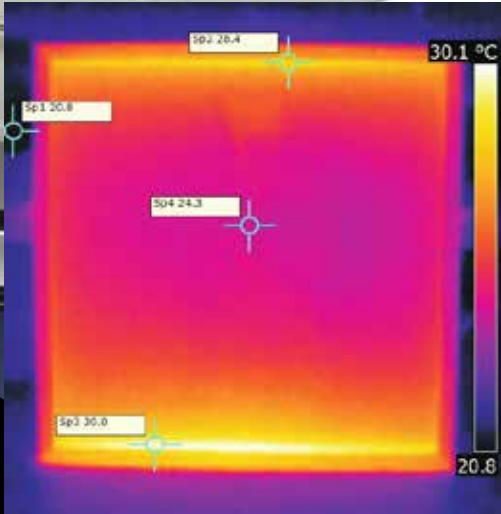
INDUSTRY LEADING COMPONENTS

QUICK & EASY INSTALLATION

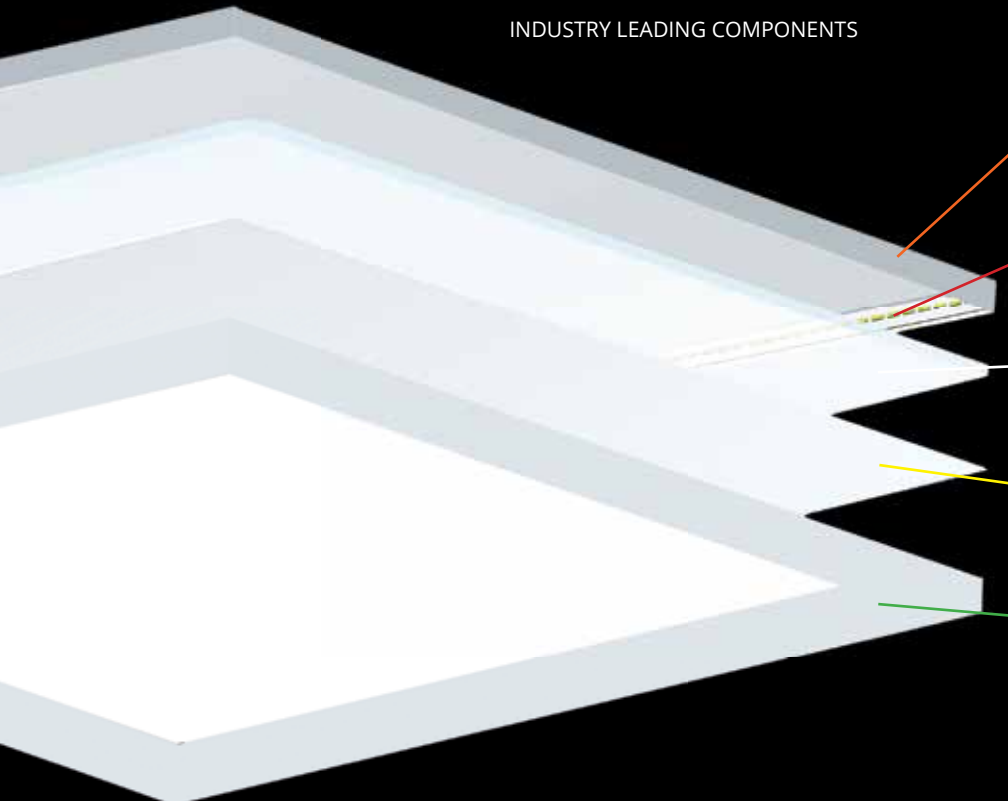
FAST ROI

LONGTERM SAVINGS





INDUSTRY LEADING COMPONENTS



ALUMINUM HEAT SINK
Features an aluminum backplate to dissipate heat and prolong the lifespan of the LEDs.

HIGH QUALITY SAMSUNG 2835 CHIPS
.5W chips provide superior lighting performance and energy savings.

PMMA LIGHT PANEL GUIDE (LPG)
Highly efficient plate directs the light downward while scattering it evenly.

HIGH-TRANSMITTANCE DIFFUSER
Eliminates glare and subtly obscures the light source.

5 YEARS WARRANTY

UV SOLID TECHNOLOGY PCB

PATENTED FRAME DESIGN
Solid, screw-free aluminum frame, UV resistant PCB coating.

IP44 RATED PANEL FRAME
Suitable for dry or damp locations.

COMBINES POWERFULLY BRIGHT LEDS WITH HIGHLY EFFICIENT LIGHT-SMOOTHING OPTICS

TO DELIVER
SUPERIOR ILLUMINATION
AND ENERGY SAVINGS
YEAR AFTER YEAR.



2 x 2

4,071

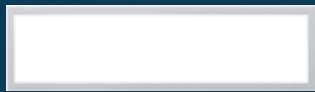
LUMENS

37

WATTS

110

LUMENS/W



1 x 4

3,949

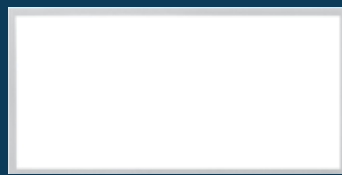
LUMENS

37

WATTS

107

LUMENS/W



2 x 4

7,289

LUMENS

62

WATTS

118

LUMENS/W

This uniquely bright yet smooth light output starts with high-output leds, placed sideways along the interior of the panel. A laser printed light guide refracts the beams down towards a high-transmittance diffuser, which eliminates glare and spreads the light out evenly.

Combined with an extremely slim, installation-friendly form (approx. half an inch tall), the Skylight 2.0 is perfect for hospitals, classrooms, offices, and any other work space requiring high quality ambient lighting.

EASE OF INSTALLATION

ULTRA-THIN

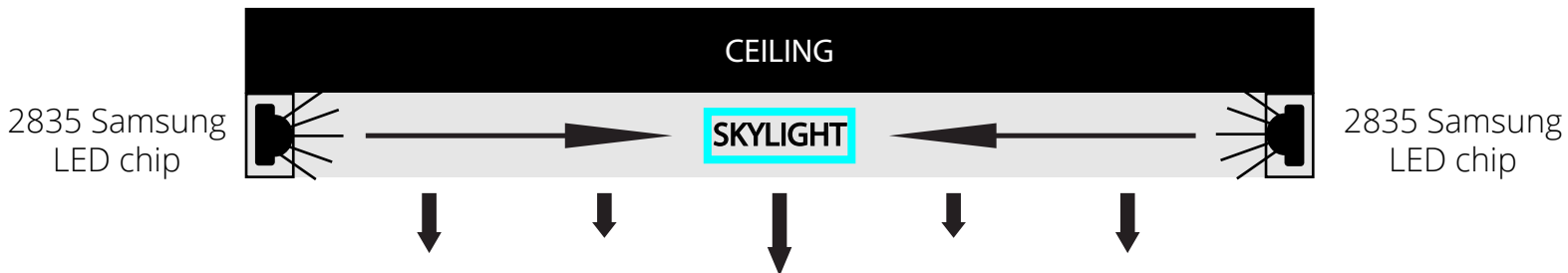
Skylight lends itself to virtually all ceiling installations; (even those with limited space).

Installation takes 5 minutes:

Simply place Skylight within a drop ceiling grid, and connect the power supply to the line voltage.

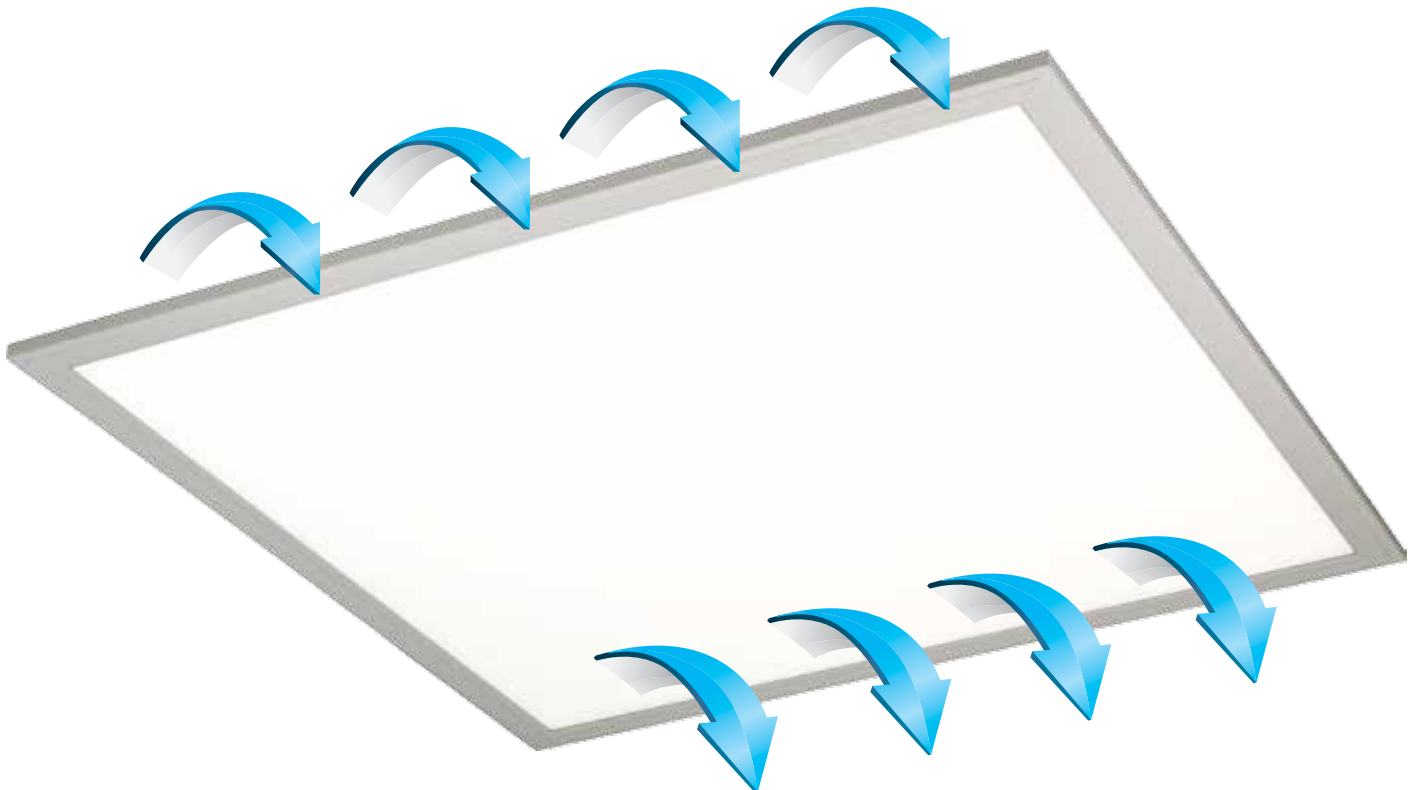


QUALITY OF LIGHT



- Sideways-facing LEDs
- + Light guide and diffuser
- = soft, comfortable, glare-free light

HEAT DISSIPATION



THE FIXTURE

THE SKYLIGHT 2x2



Ultra-Thin LED Panel Light

2'X2'

37 Watts 4,071 lumens

THE SKYLIGHT 1x4



Ultra-Thin LED Panel Light

1'X4'

37 Watts 3,949 lumens

THE SKYLIGHT 2x4



Ultra-Thin LED Panel Light

2'X4'

62 Watts 7,289 lumens

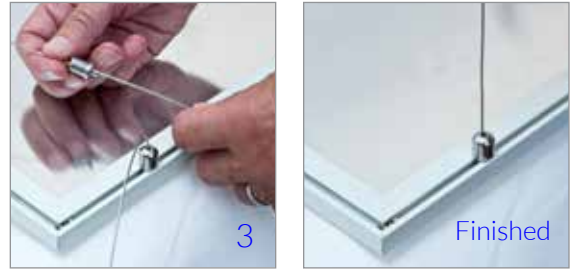
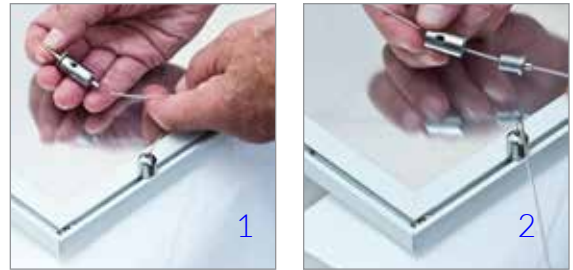
ACCESSORIES



SUSPENSION Kit (4 pcs)

- 3M
- 6M

C
E
I
L
I
N
G



SUSPENSION Kit **(applied)**

Available in :
3M (10') and 6M (20') length standard.
Can be hand adjusted in the field.
Custom length can be special ordered.



FLUSH MOUNTED Kit (4 pcs)

- 1'x4'
- 2'x2'
- 2'x4'

C
E
I
L
I
N
G



FLUSH MOUNTED Kit **(applied)**

To be used on ceilings where the unit is flush mounted less than 2" from the ceiling.
Good for existing work.

ACCESSORIES



Recessed mount for dry wall

- 1'x4'
- 2'x2'
- 2'x4'

C
E
I
L
I
N
G



Recessed mount for dry wall **(applied)**

DRYWALL RECESSED MOUNT
Installation Panel is inserted within a frame that rests within a drywall ceiling cutout.
Great for new constructions.

ACCESSORIES - CEILING / WALL



STAND OFF BRACKET
Mounting (Kit-4pcs)

C
E
I
L
I
N
G
/
W
A
L
L



STAND OFF BRACKET
Mounting (Kit) **(applied)**

Stand OFF brackets good for existing work.
Total depth is less than 2" from the ceiling.

ACCESSORIES



FLUSH MOUNTING Kit (4 pcs)

- 1'x4'
- 2'x2'
- 2'x4'

C
E
I
L
I
N
G



FLUSH MOUNTING Kit **(applied)**

Spring loaded clips secure the panel and frame in place within a ceiling cutout. Great for new constructions.



WALL MOUNTING Kit "Z"

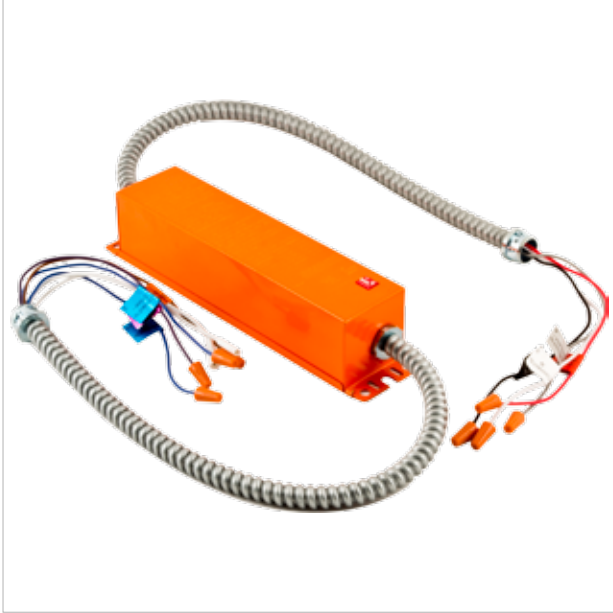
W
A
L
L
*



WALL MOUNTING Kit "Z" **(applied)**

For dry wall ceilings new construction.

EMERGENCY BACKUP DRIVER



Emergency battery driver for Skylight 2.0

EMERGENCY
BACKUP DRIVER



Emergency testing equipment (included)

ADDITIONAL POWER ACCESSORIES