



# SKYLIGHT<sup>2.0</sup>

ULTRA THIN LED PANEL LIGHT

HIGH LUMEN OUTPUT

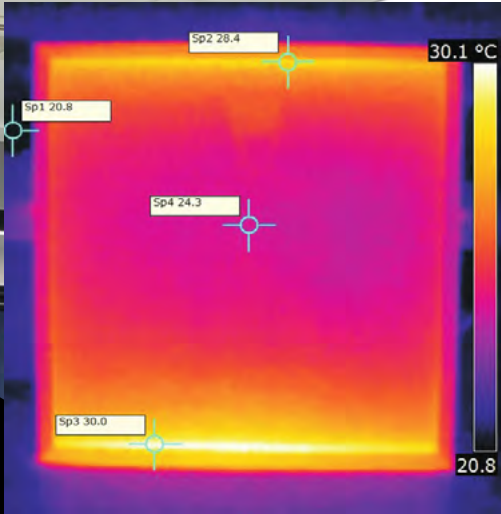
INDUSTRY LEADING COMPONENTS

QUICK & EASY INSTALLATION

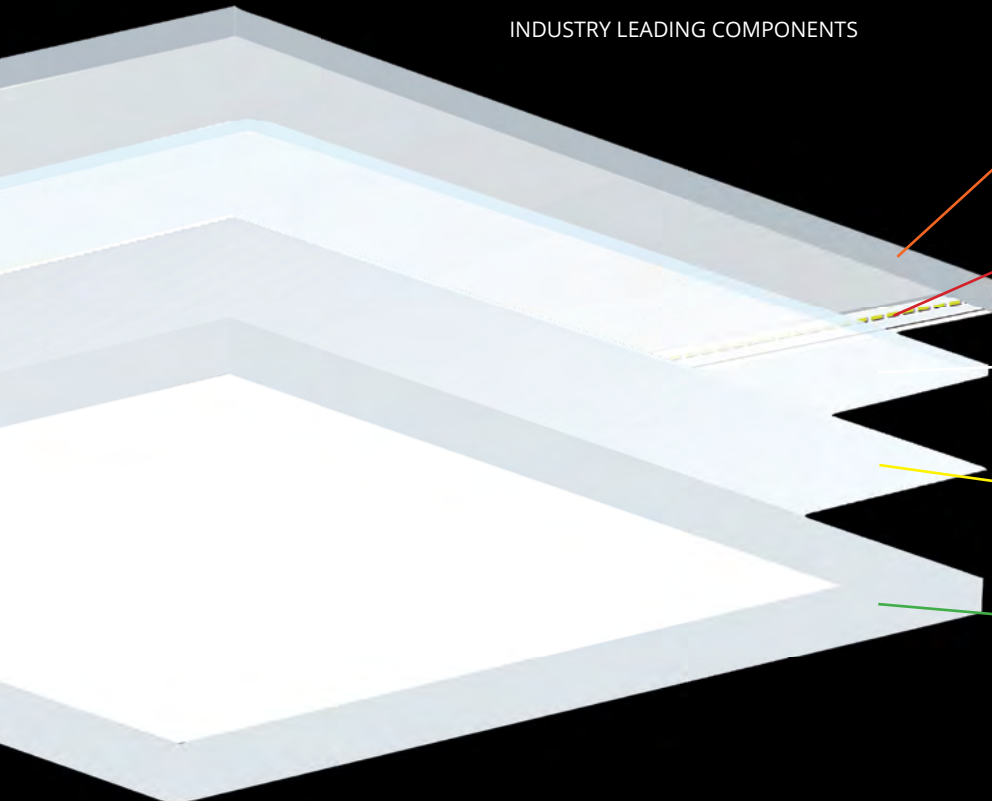
FAST ROI

LONGTERM SAVINGS





INDUSTRY LEADING COMPONENTS



**ALUMINUM HEAT SINK**  
Features an aluminum backplate to dissipate heat and prolong the lifespan of the LEDs.

**HIGH QUALITY SAMSUNG 2835 CHIPS**  
.5W chips provide superior lighting performance and energy savings.

**PMMA LIGHT PANEL GUIDE (LPG)**  
Highly efficient plate directs the light downward while scattering it evenly.

**HIGH-TRANSMITTANCE DIFFUSER**  
Eliminates glare and subtly obscures the light source.

**5 YEARS WARRANTY**

**UV SOLID TECHNOLOGY PCB**

**PATENTED FRAME DESIGN**  
Solid, screw-free aluminum frame, UV resistant PCB coating.

**IP44 RATED PANEL FRAME**  
Suitable for dry or damp locations.



# COMBINES POWERFULLY BRIGHT LEDS WITH HIGHLY EFFICIENT LIGHT-SMOOTHING OPTICS

TO DELIVER  
SUPERIOR ILLUMINATION  
AND ENERGY SAVINGS  
YEAR AFTER YEAR.



2 x 2

4,071

LUMENS

37

WATTS

110

LUMENS/W



1 x 4

3,949

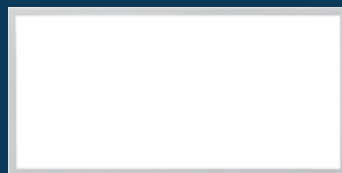
LUMENS

37

WATTS

107

LUMENS/W



2 x 4

7,289

LUMENS

62

WATTS

118

LUMENS/W

This uniquely bright yet smooth light output starts with high-output leds, placed sideways along the interior of the panel. A laser printed light guide refracts the beams down towards a high-transmittance diffuser, which eliminates glare and spreads the light out evenly.

Combined with an extremely slim, installation-friendly form (approx. half an inch tall), the Skylight 2.0 is perfect for hospitals, classrooms, offices, and any other work space requiring high quality ambient lighting.



# EASE OF INSTALLATION

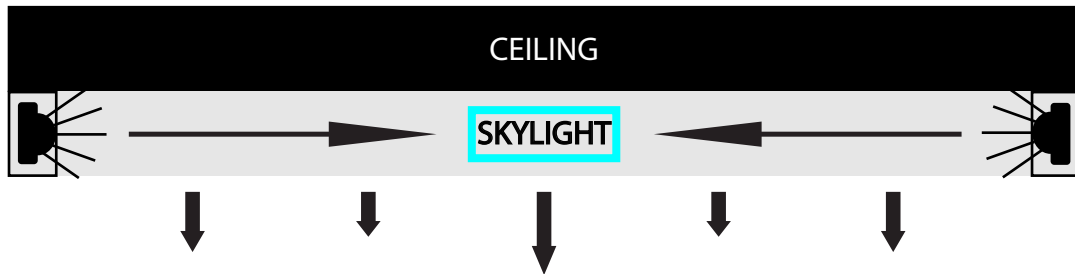
## ULTRA-THIN

Skylight lends itself to virtually all ceiling installations; (even those with limited space).

Installation takes 5 minutes:

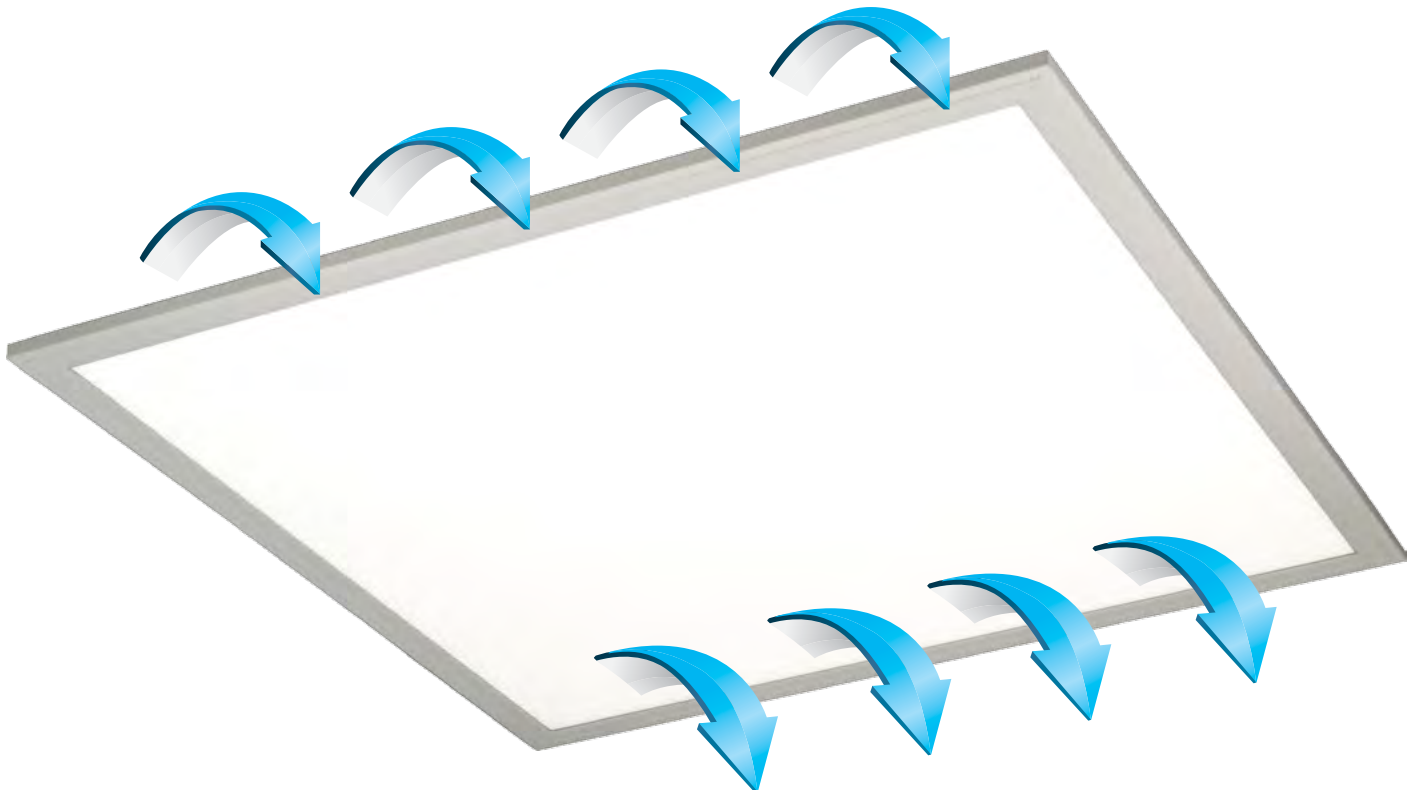
Simply place Skylight within a drop ceiling grid, and connect the power supply to the line voltage.

# QUALITY OF LIGHT



- Sideways-facing LEDs
- + Light guide and diffuser
- = soft, comfortable, glare-free light

# HEAT DISSIPATION



# THE FIXTURE

## THE SKYLIGHT 2x2



Ultra-Thin LED Panel Light

**2'X2'**

37 Watts 4,071 lumens

## THE SKYLIGHT 1x4



Ultra-Thin LED Panel Light

**1'X4'**

37 Watts 3,949 lumens

## THE SKYLIGHT 2x4



Ultra-Thin LED Panel Light

**2'X4'**

62 Watts 7,289 lumens



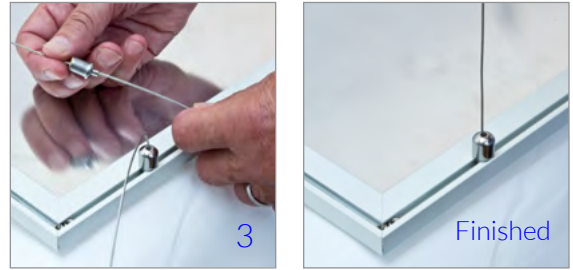
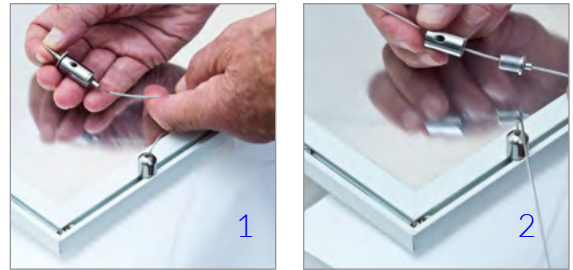
# ACCESSORIES



SUSPENSION Kit (4 pcs)

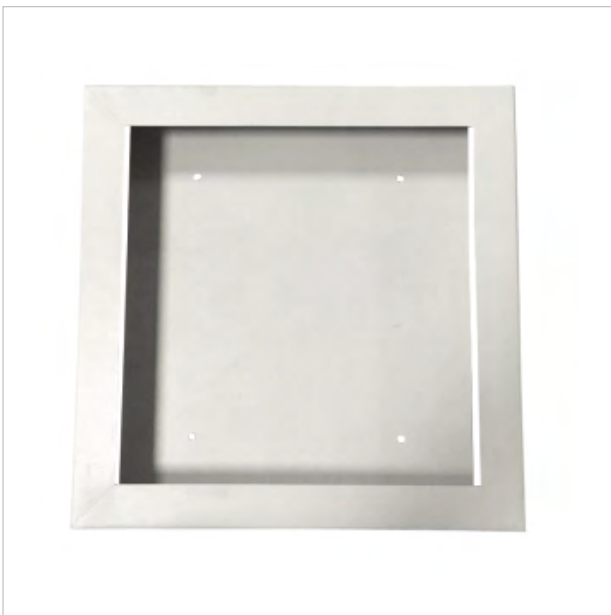
- 3M
- 6M

CEILING



SUSPENSION Kit **(applied)**

Available in :  
3M (10') and 6M (20') length standard.  
Can be hand adjusted in the field.  
Custom length can be special ordered.



FLUSH MOUNTED Kit (4 pcs)

- 1'x4'
- 2'x2'
- 2'x4'

CEILING



FLUSH MOUNTED Kit **(applied)**

To be used on ceilings where the unit is flush mounted less than 2" from the ceiling.  
Good for existing work.



# ACCESSORIES



Recessed mount for dry wall

- 1'x4'
- 2'x2'
- 2'x4'

C  
E  
I  
L  
I  
N  
G



Recessed mount for dry wall **(applied)**

DRYWALL RECESSED MOUNT  
Installation Panel is inserted within a frame that rests within a drywall ceiling cutout.  
Great for new constructions.

# ACCESSORIES - CEILING / WALL



STAND OFF BRACKET  
Mounting (Kit-4pcs)

C  
E  
I  
L  
I  
N  
G  
/  
W  
A  
L  
L



STAND OFF BRACKET  
Mounting (Kit) **(applied)**

Stand OFF brackets good for existing work.  
Total depth is less than 2" from the ceiling.



# ACCESSORIES



FLUSH MOUNTING Kit (4 pcs)

- 1'x4'
- 2'x2'
- 2'x4'

C  
E  
I  
L  
I  
N  
G



FLUSH MOUNTING Kit **(applied)**

Spring loaded clips secure the panel and frame in place within a ceiling cutout. Great for new constructions.



WALL MOUNTING Kit "Z"

W  
A  
L  
L  
\*



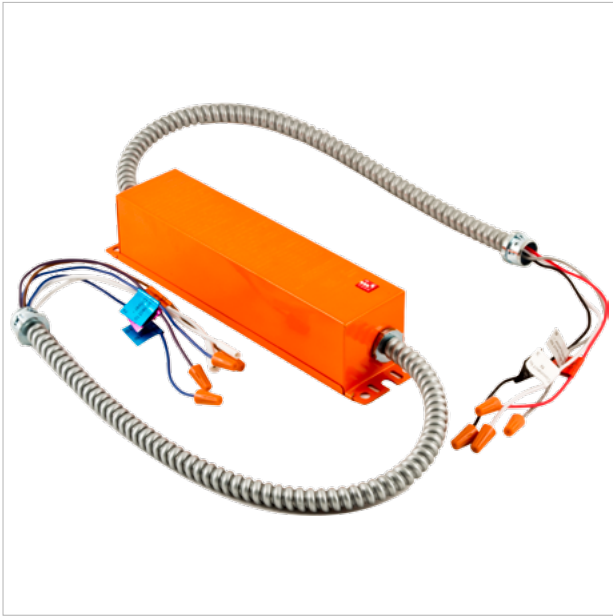
WALL MOUNTING Kit "Z" **(applied)**

For dry wall ceilings new construction.





# EMERGENCY BACKUP DRIVER



Emergency battery driver for Skylight 2.0

EMERGENCY  
BACKUP DRIVER



Emergency testing equipment (included)

ADDITIONAL POWER ACCESSORIES

