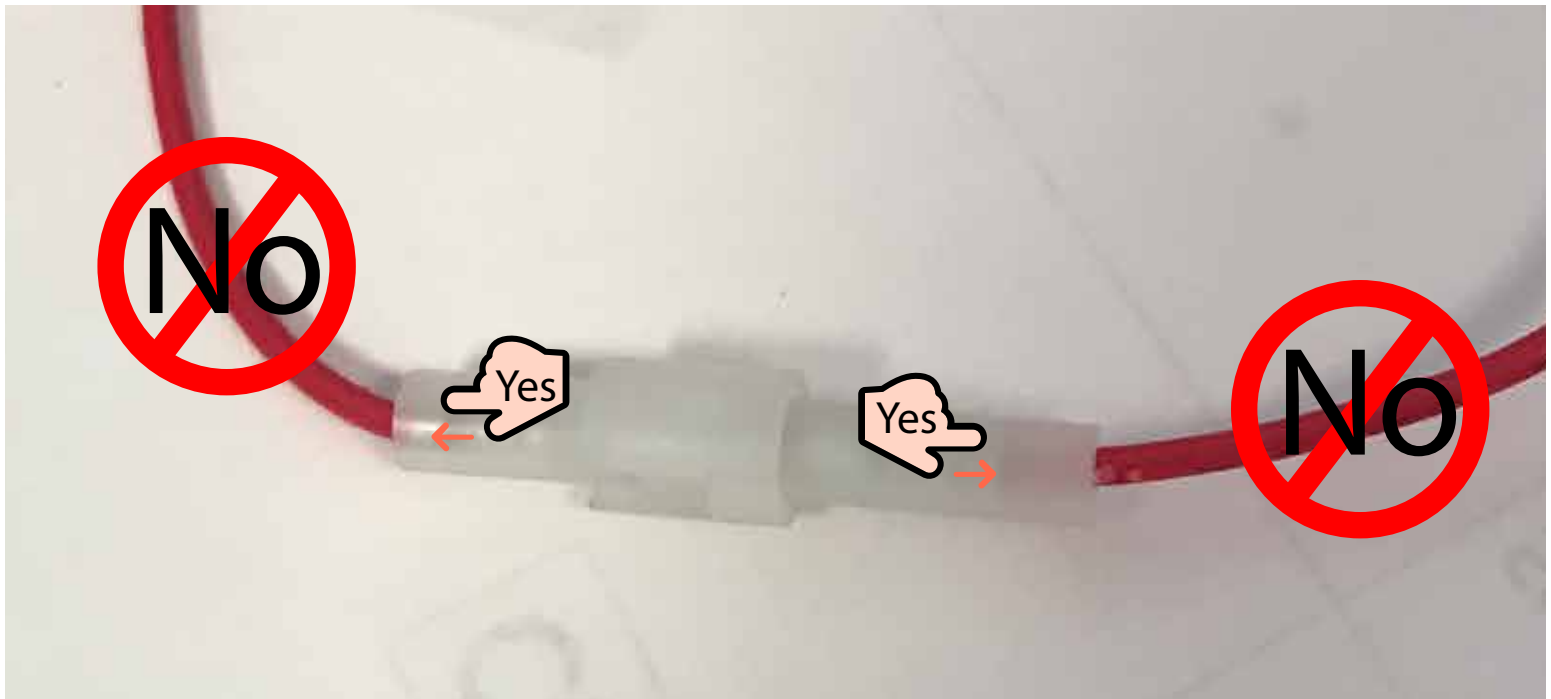


**PR
15-25-35-Midtown**

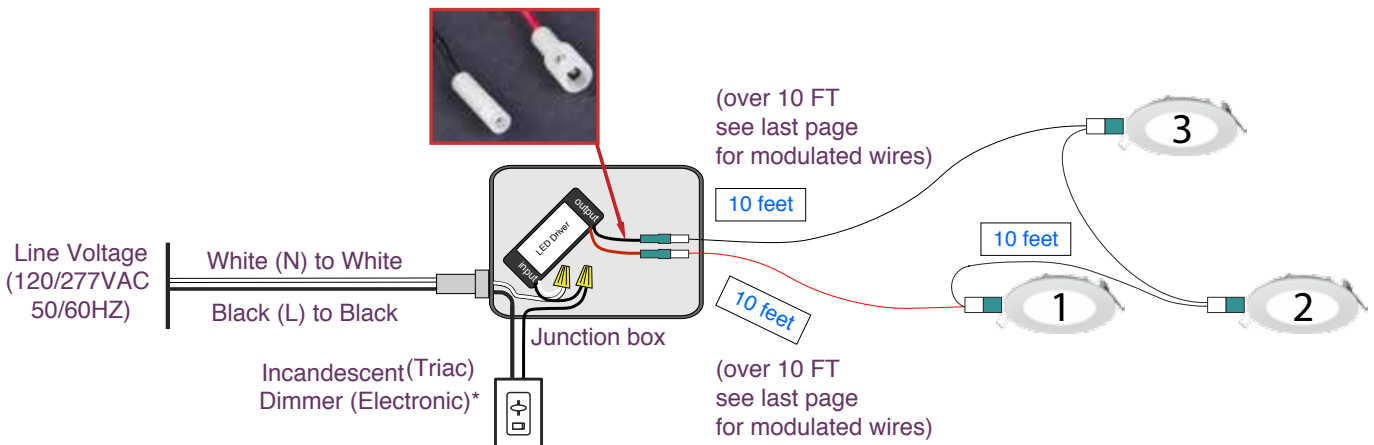


IMPORTANT

If you need to disconnect your wires, make sure to pull them apart by grasping onto the white plastic Quick Connects. Do NOT pull on the wires themselves as doing so may break the soldering and disconnect the electrical circuit.



3 Light-Kit : Wiring Plan - **CIRCLE**

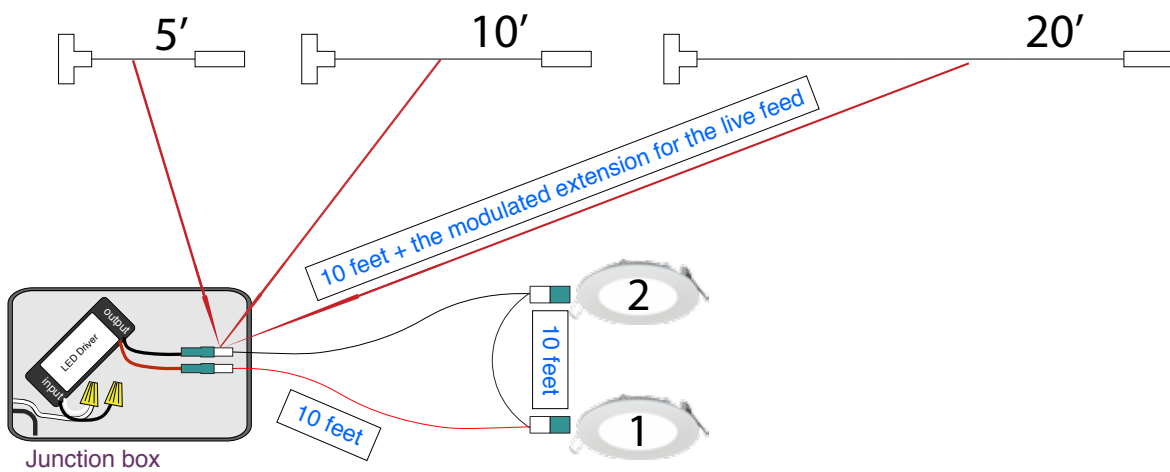


PR 15-25-35-Midtown



These extensions can be used either leaving the driver or coming back to the driver.

Modulated extensions for live feed



- * Works best for the **ELECTRONIC LOW VOLTAGE** dimmers.
- ** The reason for not cutting the wires is the polarity can be reversed and short out the system.

3 Light-Kit : Wiring Plan - **LINEAR**

