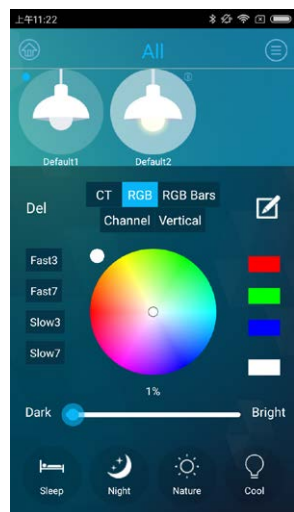
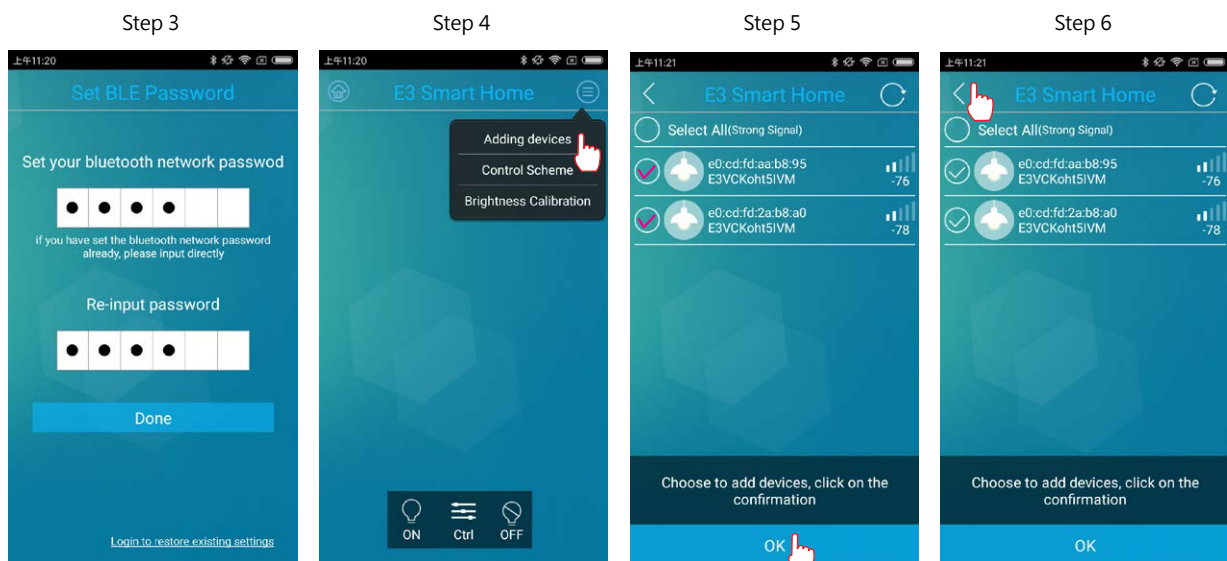




### Download "Bluelight2"

#### Device Connection

- Step 1 : Download APP based on your operating system
- Step 2 : Turn on Bluetooth
- Step 3 : Startup app. Enter password, the default password is 1234 (4 digits only)
- Step 4 : Click to ⊕ Add devices
- Step 5 : Choose the device, and click OK.
- Step 6 : Click < back to the device list.



Click the icon - device will be ON/OFF  
Long press the icon to popup interface of control setting Step.



Delete : After light blinks 3 times, reset successful.



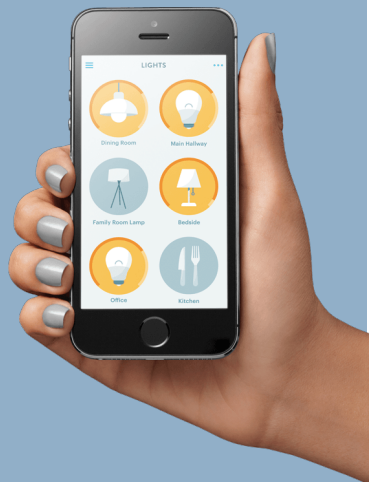
Color Temperature Control.



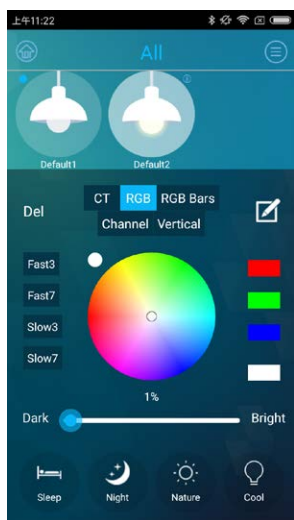
Color Control.

Control Temperature / color / RGB Scenes / Nightlight.





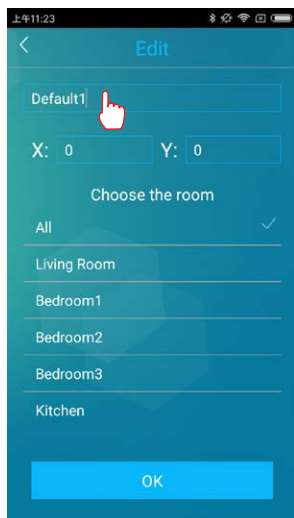
### Device Setting



Long press the icon to popup interface of control setting.

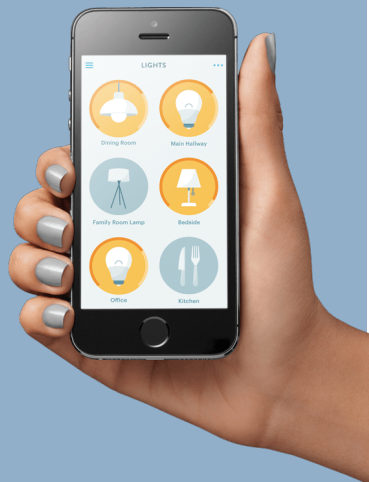


Edit setting : Rename / Group Setting.



Rename—click to edit.



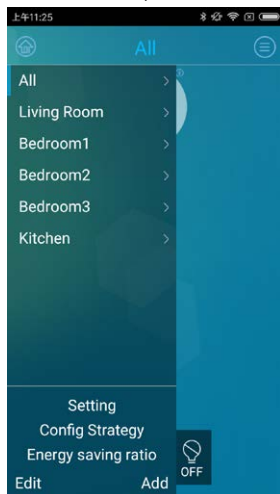


### Group Control

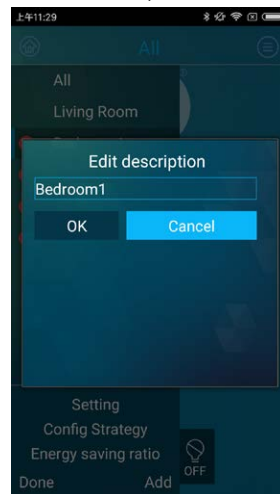
Step 1



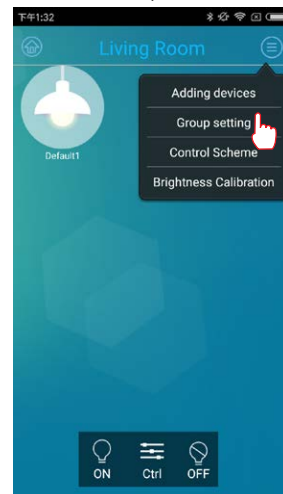
Step 2



Step 3



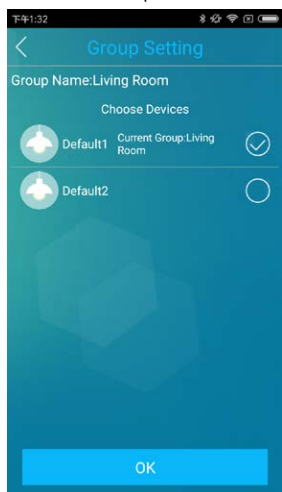
Step 4



**Add :** Add group.  
**Edit :** Delete group.

**Edit group name :** click name to rename.

Step 5



Step 6



Control power.

Control all devices of group.

Choose devices you want to add in the Living Room for group adding.

