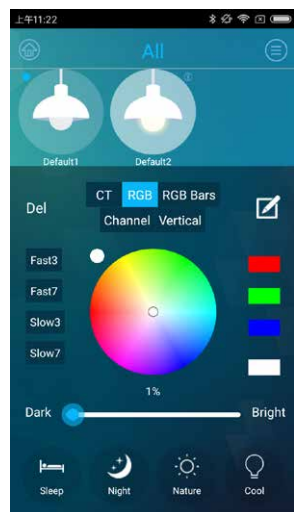
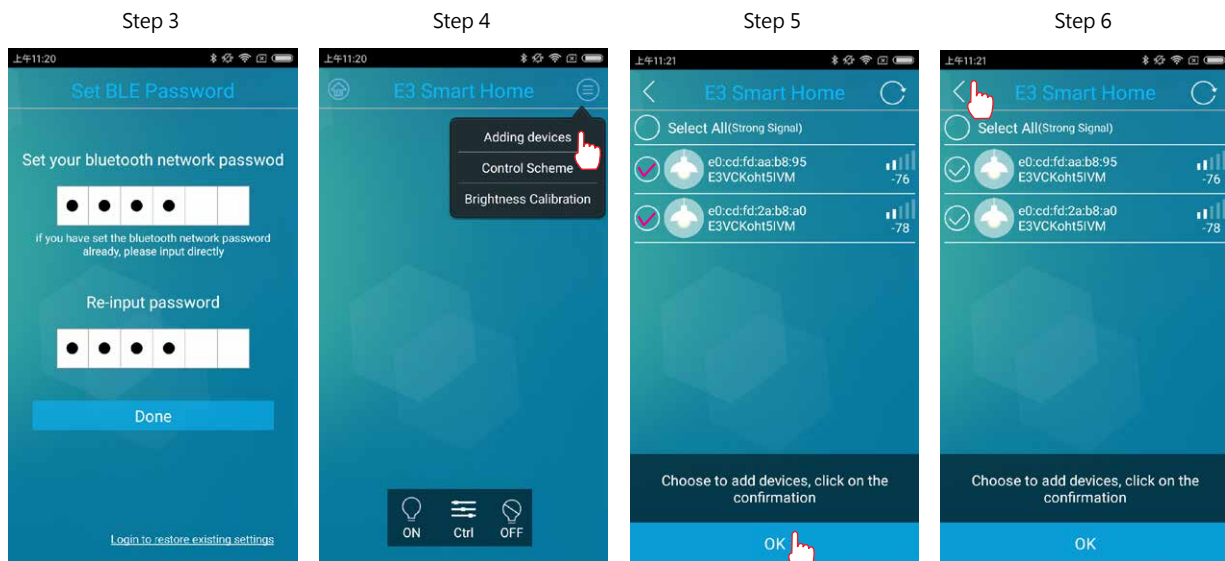
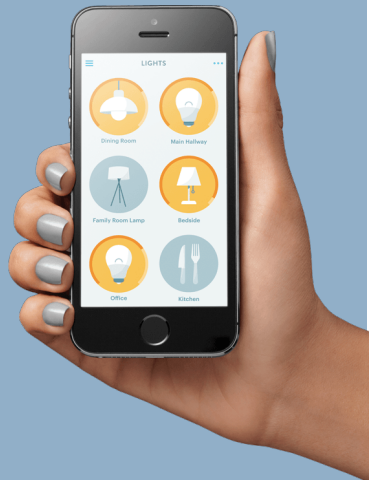




Download "Bluelight2"

Device Connection

- Step 1 : Download APP based on your operating system
- Step 2 : Turn on Bluetooth
- Step 3 : Startup app. Enter password, the default password is 1234 (4 digits only)
- Step 4 : Click to ☰ Add devices
- Step 5 : Choose the device, and click OK.
- Step 6 : Click < back to the device list.



Click the icon - device will be ON/OFF
Long press the icon to popup interface of control setting Step.

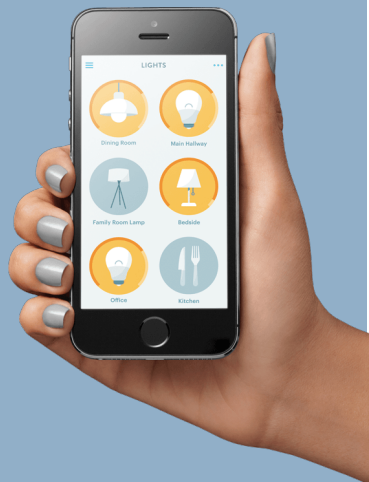


Del : After light blinks 3 times, reset successful.



Color Temperature Control.

Control Temperature / color / RGB Scenes / Nightlight.



Device Setting



Long press the icon to popup interface of control setting.

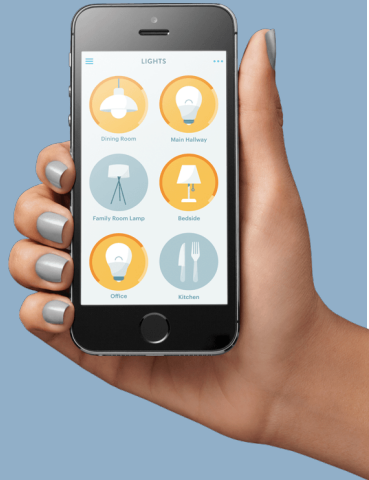


Edit setting : Rename / Group Setting.

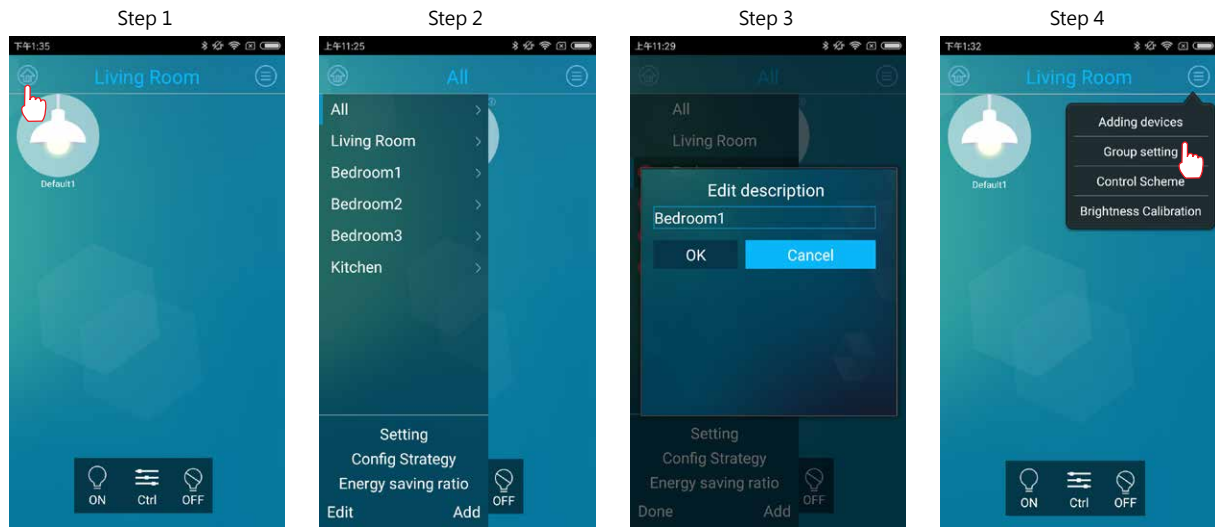


Rename—click to edit.



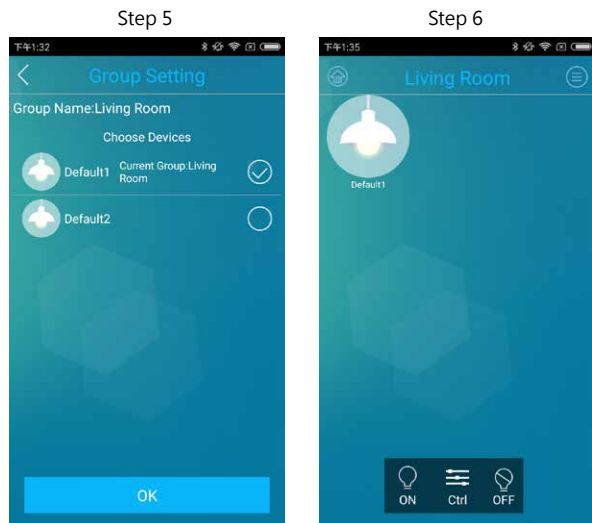


Group Control



Add : Add group.
Edit : Delete group.

Edit group name : click name to rename.



Choose devices you want to add in the Living Room for group adding.

Control power.
 Control all devices of group.