

OSWALD PERFORMANCE

2002 – 2007 Impreza Rear Bumper Beam Installation Instructions



1. Remove trunk bottom carpet and spare tire cover / board. Pull carpet on sides of trunk out of the way to allow access to the taillights.



2. Remove taillights (4 – 8mm hex nuts and 1 connector each).



3. Remove 4 nuts holding bumper skin bracket (12mm hex, 2 on each side).



4. Remove screws and clips under taillights (1 – 10mm hex screw and 2 – plastic clips on each side).

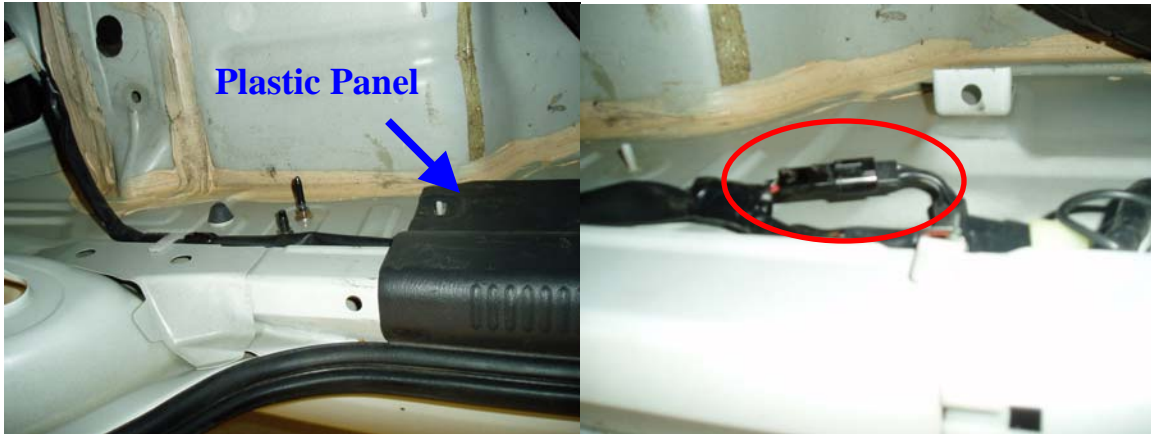


5. Remove 5 plastic clips on the underside of the bumper skin.

6. Remove 10mm hex screws in wheel wells (1 screw on each side).



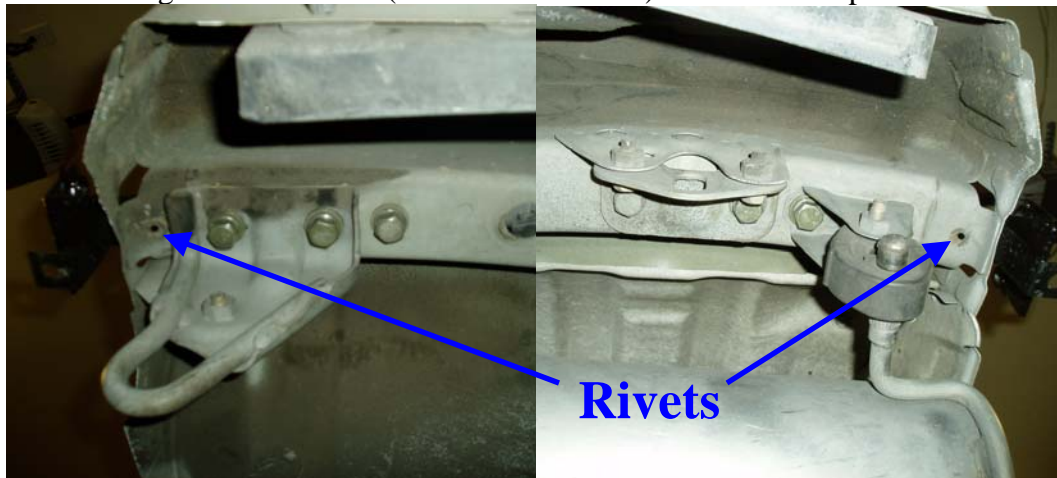
7. Remove trunk rear plastic panel by pulling up and disconnect license plate light connector.



8. Remove bumper skin and foam energy absorber.



9. Drill or grind out 2 rivets (1 rivet on each side) under the bumper beam.



Passenger Side

Driver Side

10. Remove bumper beam bolts (3 – 17mm hex bolts and 1 – 12mm hex bolt on each side). It also may help to loosen the remaining bolt on the stock tow/tie down hook (circled in blue).



11. Remove stock bumper beam and **loosely** install Oswald Performance brackets using the 6 stock 17mm hex bolts. Be sure to install the correct bracket on the correct side. It is important not to tighten these bolts until the next step.



Driver Side

Passenger Side

12. Install Oswald Performance bumper beam onto brackets using the 4 supplied 15mm hex bolts and tighten all bolts (including the ones from step 11).



13. Re-install foam energy absorber, bumper skin, taillights, and trunk trim in the opposite way of removal and go enjoy your lighter car.



Please feel free to contact me with any questions or concerns at:
Mickey@OswaldPerformance.com

Thank you,

Mickey Oswald