

# ***OSWALD PERFORMANCE***

## **2002 – 2007 Impreza Rear Brace Installation Instructions**



Note: The following instructions were written for a 2005 WRX STi. The procedure may be slightly different for different models or years. This installation should be done with the suspension loaded and the wheels on level ground. (Notes for Wagon Installation added in red)

1. Remove seat bottom by removing the two bolts (one on each side).



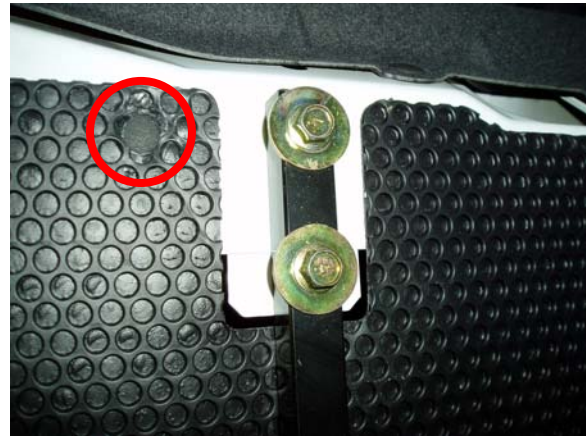
2. Remove seat back by removing the three bolts (left, right, and center).

(Wagon: Remove seat backs by folding seats down and unbolting center bracket from the seat backs. Then pull seat backs out of the side mount/pivot points by pulling toward the center of the car.)



3. Remove the two vertical bars (left and right) by removing the four bolts each (two at the top and two at the bottom). Remove the trunk trim panel by removing the four plastic clips (circled).

(Wagon: This step does not apply to Wagon Installations)

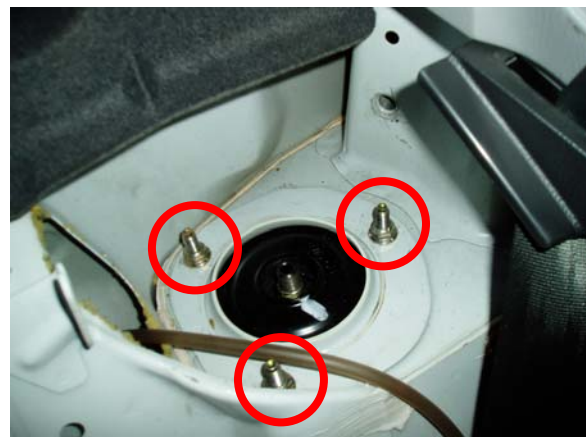


4. Remove the two side seatbelts by removing the bolt shown.

(Wagon: This step does not apply to Wagon Installations)

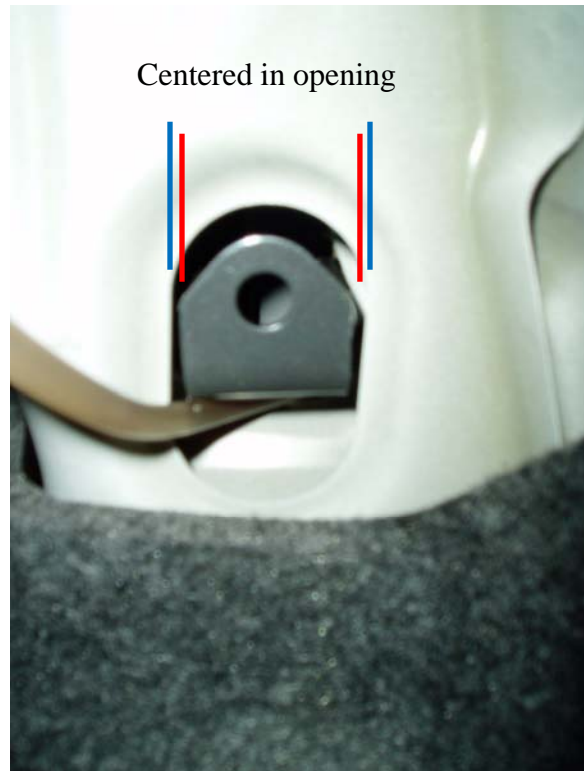


5. Remove the three nuts on each strut top.



6. Install the Oswald Performance strut tops on each side using the factory nuts. The left and right strut tops are different and will only fit on their respective sides. Be careful tightening the nuts as the studs are notorious for breaking. As you tighten the nuts try to keep the strut top centered in the bulkhead opening.

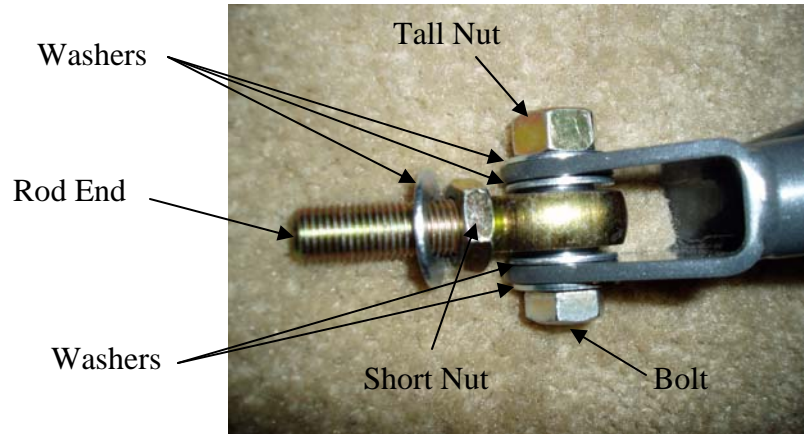
(Wagon: The strut tops should be installed with the brace mounting point biased towards the rear of the car. In other words the little corner in the in the outside diameter should be pointing to the rear.)



7. Install the Oswald Performance bottom mount using the factory bolts from the vertical bars. (Wagon: Remove the center seat mount bracket and install the bottom mount using the factory nut on top and the supplied black bolts on the bottom. Reinstall the seat mount bracket on top of the brace bottom mount. One of the holes in the seat mount bracket may need to be enlarged slightly.)



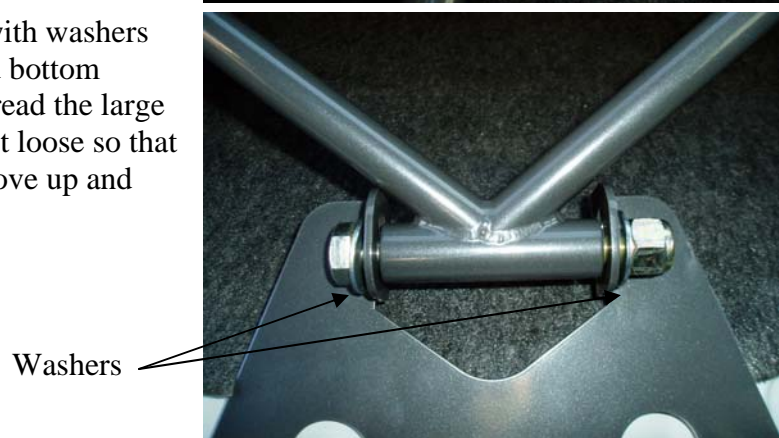
8. Prepare the Oswald Performance brace by installing the two rod ends (one on each side) as shown. Thread the short jam nuts all the way down on the rod ends.



9. Slide the rod ends into the strut tops.



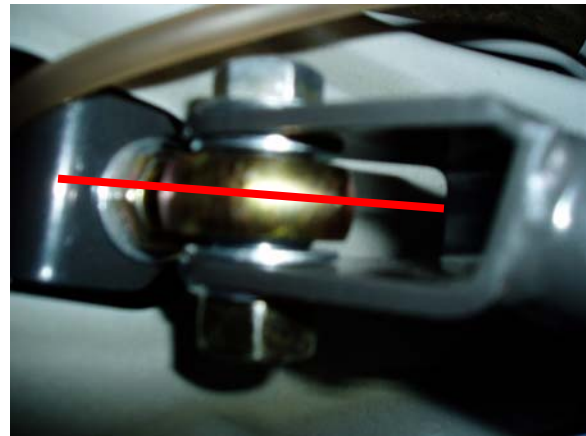
10. Insert the large bolt with washers through the brace and bottom mount as shown. Thread the large locknut on but leave it loose so that the brace is free to move up and down.



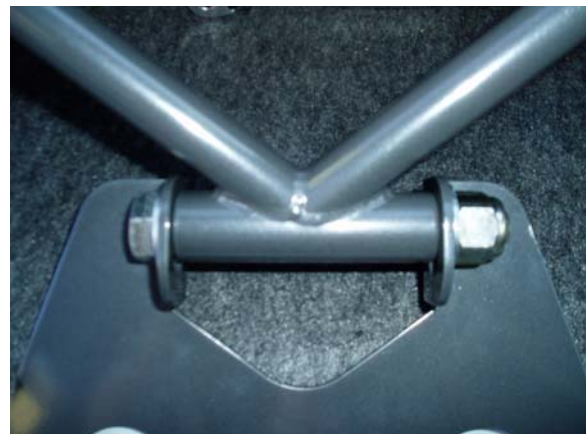
11. Install washers and tall nuts onto the rod ends securing the brace to the strut tops. Tighten each side evenly to keep the brace centered. Once the nuts start to get tight move to the short nuts that were installed in step 8 and tighten them up on the other side. As you tighten the nuts try to keep the rod end straight (parallel to the brace mounting clevis).



Rod end straight



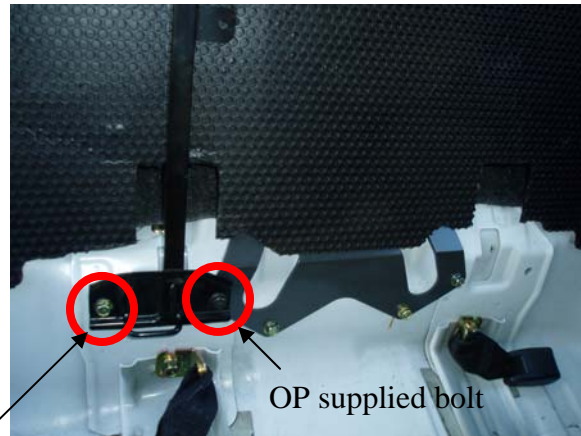
12. Tighten the large bolt and nut on the bottom mount.



13. Reinstall the trunk trim panel.  
Remove the passenger side bolt from the bottom mount. Install the vertical bar using the factory bolt for the outboard hole and the black bolt supplied with your Oswald Performance brace for the inboard hole. Reinstall the two factory bolts at the top of the bar.

(Wagon: This step does not apply to Wagon Installations)

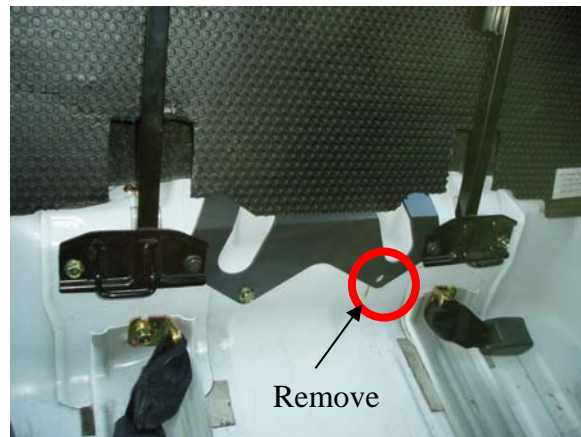
Factory bolt



14. Repeat step 13 for the other vertical bar and remove the lower driver side bolt from the bottom mount.

(Wagon: This step does not apply to Wagon Installations)

Remove



15. Reinstall the rear seat back using the factory bolts.

(Wagon: Reinstall the seat backs in the reverse order of removal.)



16. Reinstall the rear seat bottom using the factory bolts.

17. Go enjoy your car!

Please feel free to contact me with any questions or concerns at:  
[Mickey@OswaldPerformance.com](mailto:Mickey@OswaldPerformance.com)

Thank you,  
Mickey Oswald