

Waterproof Monitor

Operation Manual



CONTENTS

Contents/Warranty	1
Preface	2
Specifications	3
Menu Operation Manual	4
Keystroke and Instruction	5
Wiring Diagram	6
Bracket Installation	7

WARRANTY

Free 12 month maintenance warranty

Warranty void if one of the following instances occurs:

1. Can't offer purchase invoice
2. Invoice was changed by buyer
3. Accident or damage during installation
4. Leader wire was cut down
5. Warranty period has expired

INTRO

We appreciate your business and are dedicated to offering quality products to our customers. Please read the manual to ensure long-term use of our systems.

Notes:

1. Please do not open the covers. Opening the casing nullifies warranty.
2. Do not use solvents to clean the screen, a damp cloth should be used.
3. Protect system from dirt, direct sun, high/low temperatures and extreme humidity.
4. System is fragile, please do not drop and handle with care.
5. Please use the wiring diagram enclosed. Product will not work if wired incorrectly and may damage your vehicle electrical system.
6. Do not operate product while driving.

SPECIFICATIONS

Waterproof Rate: IP69K

Screen Size: 7" screen

Resolution: 800RGB(H)x480(V)

System: PAL/NTSC/ AUTO

OSD MENU: Reversing image delay time 0-15s; Separately adjust camera mirror/ normal image; Multi-language

Video Inputs: 3 way video inputs, 2 way trigger wires

Brightness: 450cd/m'

Contrast: 450:1

Voltage: DC10V-36V

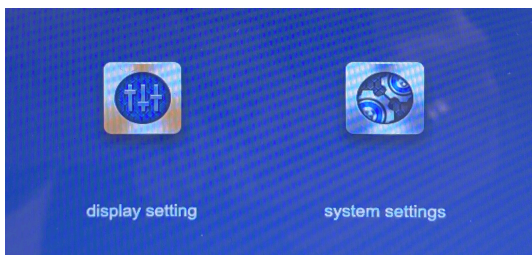
Features: With reverse polarity protection;
Separately supply DC 12V power to each camera;
AV2/AV3 with trigger wires; With removable sunshade;
Keystroke with LED blue light

Operation Mode: 15# Remote control/Keystroke

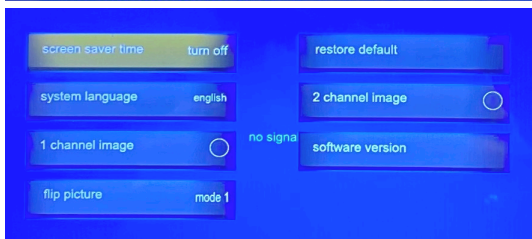
Optional: Audio, RCA/ Aviation connector optional

Dimensions: (L)187x(W)140x(T)32MM

MENU OPERATION



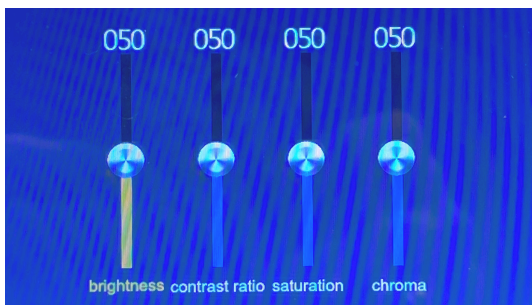
Main Menu



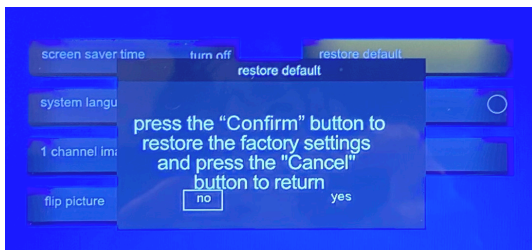
System Settings: Change screensaver time to 1, 3, or 5 minutes and OFF



System Settings: System Language> Use AV button on monitor to scroll through languages



Display Settings: Adjust brightness, contrast, saturation and more



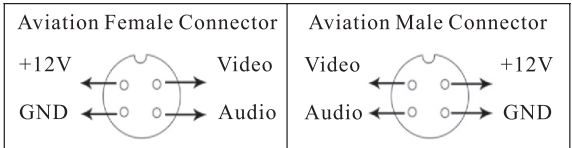
System Settings: Restore factory defaults

BUTTON DIAGRAM

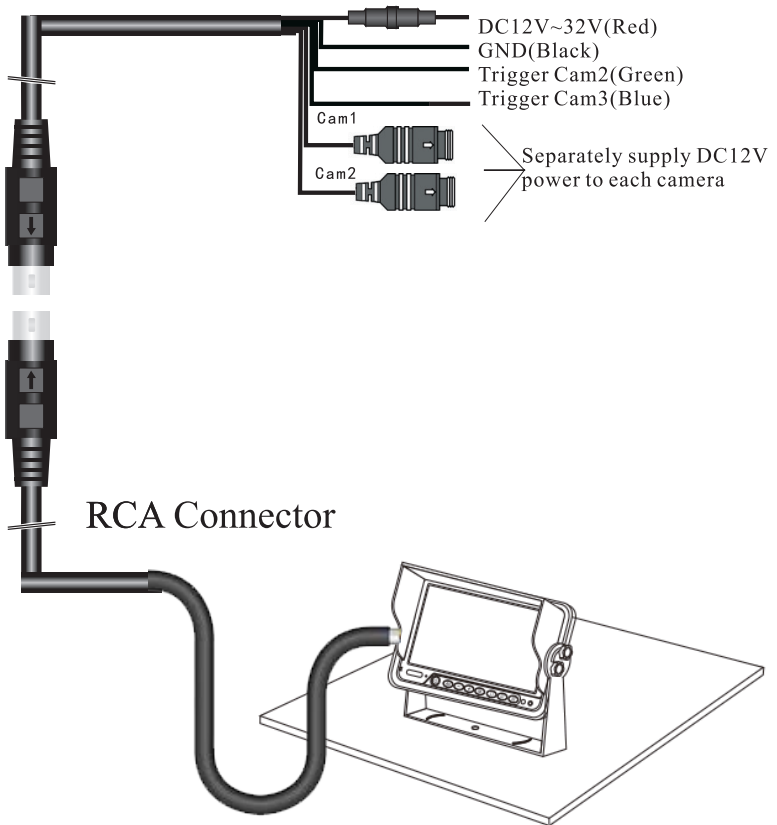


- 1 IR Receiver
- 2 Power On
- 3 Analog Decrease
- 4 Analog Increase
- 5 MENU
- 6 UP
- 7 Down
- 8 Video Switch/AV Button

WIRING DIAGRAM



Aviation Connector



BRACKET INSTALLATION

Model: 2;3;4;5;6;7;8;9;10 can choose the bracket:

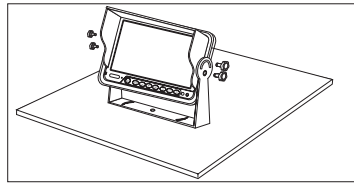
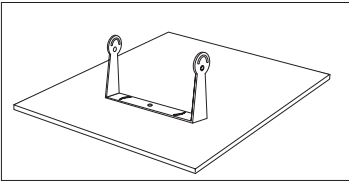
Headrest Frame; Plastic/Metal bracket

Model: 1; 11; 12; 13 can choose the bracket:

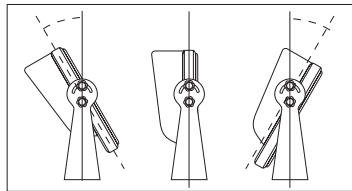
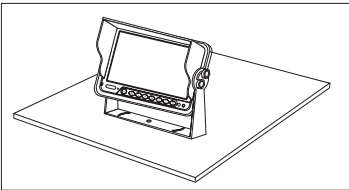
Headrest Frame; Metal; U-Bracket

U-Bracket Installation

1) Use the screws provided to install the U-bracket. Put the monitor into the bracket, adjust angle and lock it.



2) Once finished, adjust the angle forward 30° or backward 30°.



BRACKET INSTALLATION

Plastic/Metal Bracket Installation

- 1) Once the bracket is installed, the screws on the top need to thread into the nut
- 2) Secondly, put the metal buckle piece on the top of the fan-shaped bracket into the notch at the back of the monitor
- 3) Move the bracket to the proper location. ! H
- 4) Screw down the nut of bracket, until the monitor is fastened

