

INSTRUCTIONAL MANUAL

4G LIVE STREAMING 1080 MDVR

How To Get Device Online



New Server Migration Reasons:

Old server can not meet the requirements of development for more 4G MDVR devices on the IP server. Having too many devices on an older server causes buffering when viewing video. Enjoy our new server for better service experience.

Additional Quick Start Process available below if you have these discontinued 4G MDVR products

1st Gen



2nd Gen



*Note - All 4G MDVR devices will be using the NEW, IMPROVED, UPDATED IP SERVER & PORT #

NEW URL IP SERVER THAT WILL BE USED IS: <http://113.96.131.200/808gps/login.html>

Click or copy and paste IP Server link to your browser.

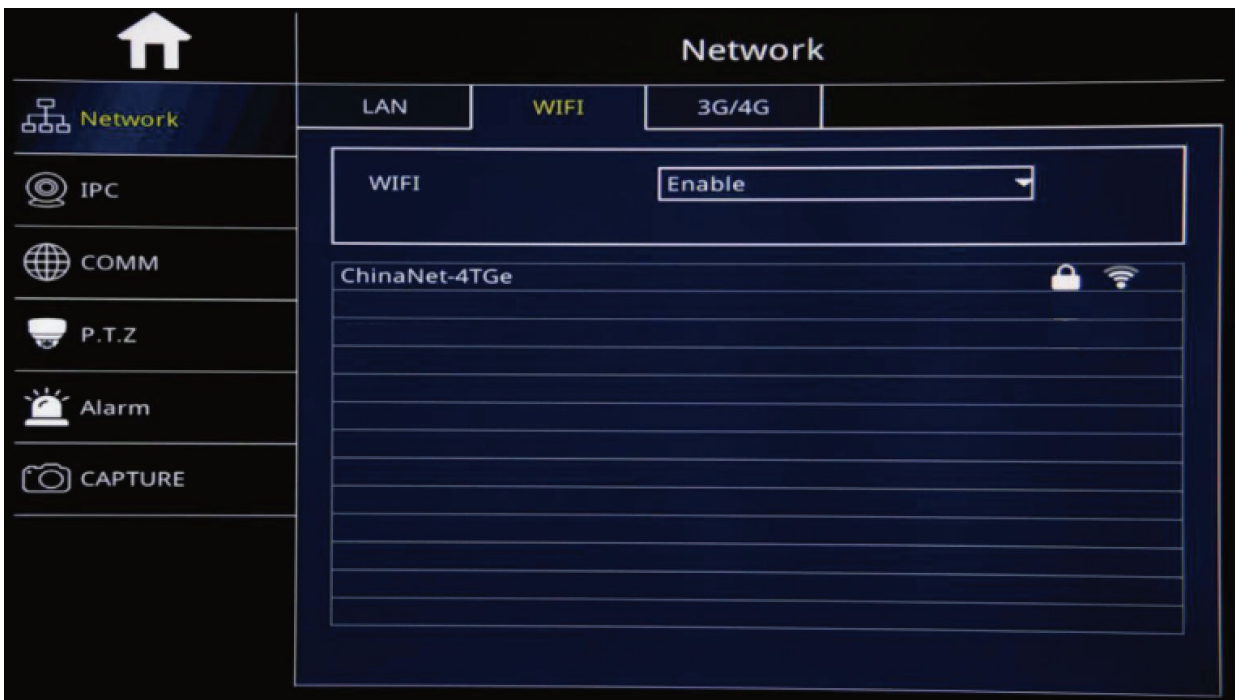
MUST ENABLE / ALLOW "FLASH" after you have entered new IP server URL into your browser

How to Setup WIFI Connection in settings

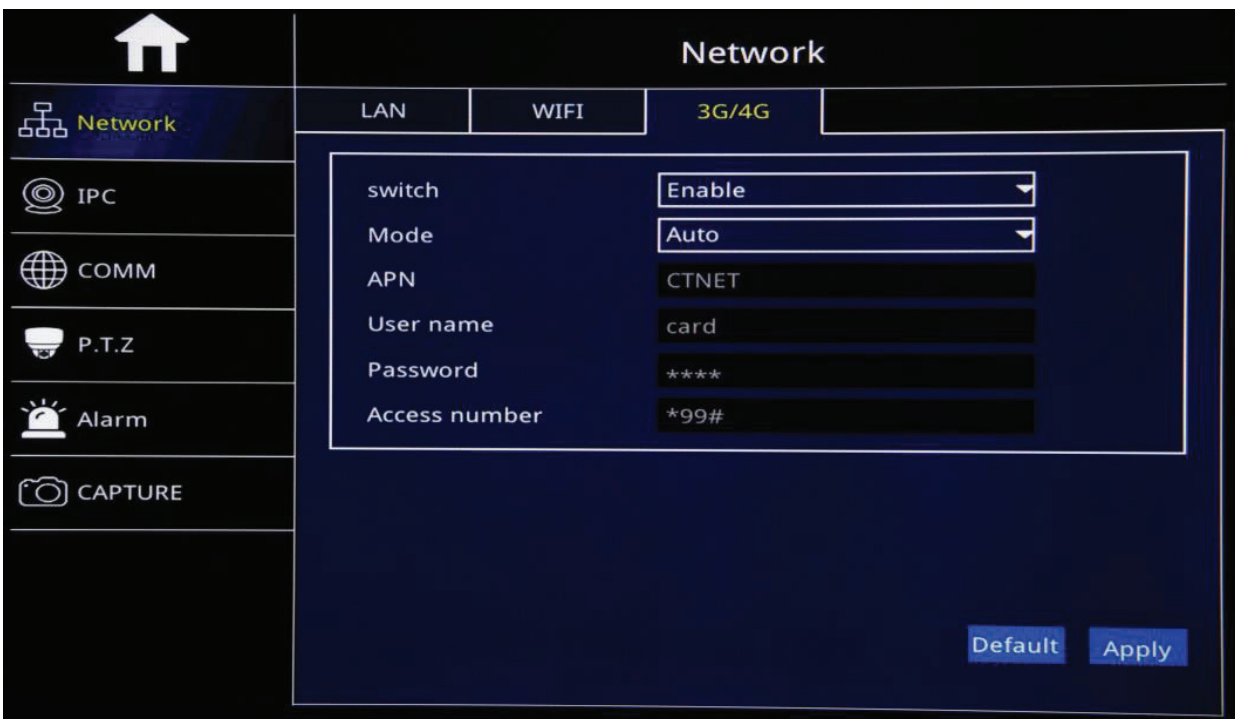
Link: https://www.youtube.com/watch?v=N8sekKdJJMs&feature=emb_logo

WIFI Setup

After "Enable" WIFI, Device will auto detect WIFI networks



How to Setup 3G/4G Connection in Settings



- Switch: "Enable": Start 3G/4G Function; "Disable": Shut off 3G/4G Function
- Mode: select Auto
- APN: Input APN information based sim card carrier
- T-Mobile APN enter fast.t-mobile. username and password enter: card
- AT&T APN enter broadband. Username and password enter: card

THIS PROCESS IS ONLY IF YOUR SYSTEM HAS AN INTERNET CONNECTION AND DEVICE IS ONLINE

How to login on client server website and remote view videos

cameras on a desktop, laptop

Copy/Paste URL into web browser <http://www.zxcmsv6.com/808gps/login.html>

Process if you have this discontinued 4G MNVR products



1. Account name: Was Given to you and may start with: MNVR
2. Password: 000000 (unless you have changed it)
3. Enter Code
4. Login

Make sure that Flash Web PC Settings are set "allowed"

1. Check the box on top left corner next to "your order number"
2. Select the "+" sign next to your device # and picture of truck logo to display CH1, CH2, CH3, CH4 - CH8
3. Right click on CH1, CH2, etc (depends on how many cameras you may have) video cam log and select Preview Main Stream or Sub Stream

Process if you have current upgraded 4G MNVR product



1. Account name: **Located on your black box**
2. Password: 000000
3. ENTER IP Address: 113.96.131.200
4. LOGIN
5. Select "Video"
6. Press "Play icon" to view each camera

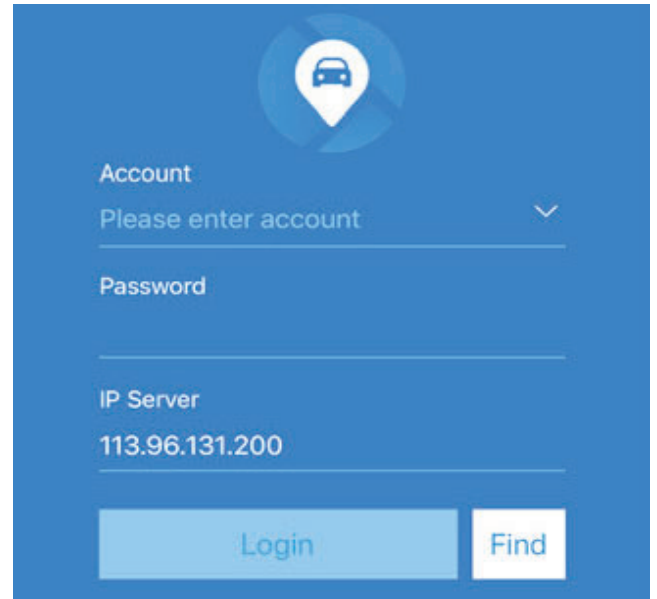
How to login mobile app and remote view videos

In the APP store, type the app name "CMSV7"

Process if you have this discontinued 4G MNVR products



1. Account name: **Was Given to you and may start with: MNVR**
2. Password: 000000 (unless you have changed it)
3. ENTER IP Address: 113.96.131.200
4. LOGIN
5. Select "Video"
6. Press "Play icon" to view each camera



Process if you have current upgraded 4G MNVR product



1. Account name: **Located on your black box**
2. Password: 000000
3. ENTER IP Address: 113.96.131.200
4. LOGIN
5. Select "Video"
6. Press "Play icon" to view each camera

We are here to answer any questions you may have. BEFORE CALLING FOR TECH SUPPORT: REVIEW MANUALS ON THE "EXTRA TAB" ON OUR PRODUCT PAGE.

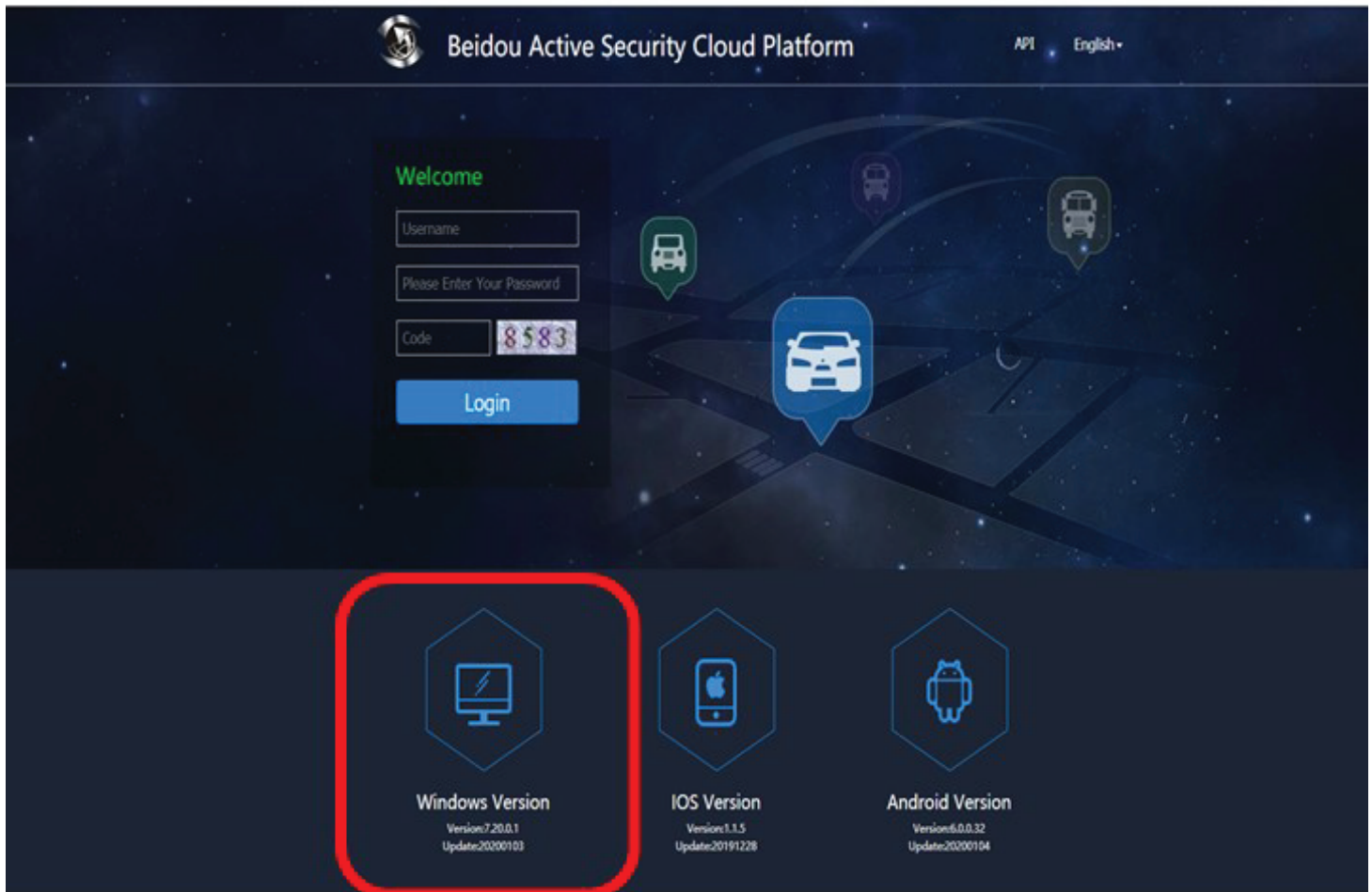
1. BE PARKED OR AVAILABLE TO NAVIGATE THROUGH MNVR BLACK BOX MENU'S
2. REVIEW ALL INSTRUCTIONAL VIDEOS
3. REVIEW ALL MANUALS

MNVR Tech Support: Call, Text, or Email Falcon Electronics office 9 am - 5pm CST 972.600.1320
falconeydashcams@gmail.com

How to Download Windows Version & iOS Version of Desktop Viewing Software also for Application Setup

Step 1- CLICK HERE to redirect to IP Server URL. (IP Server page will look like the picture below) Step 2- Select "Windows Version" and follow the process on page 2.

<http://113.96.131.200/808gps/login.html>



How to find beidou active security cloud platform / client server website for remote viewing on desktop or laptop.

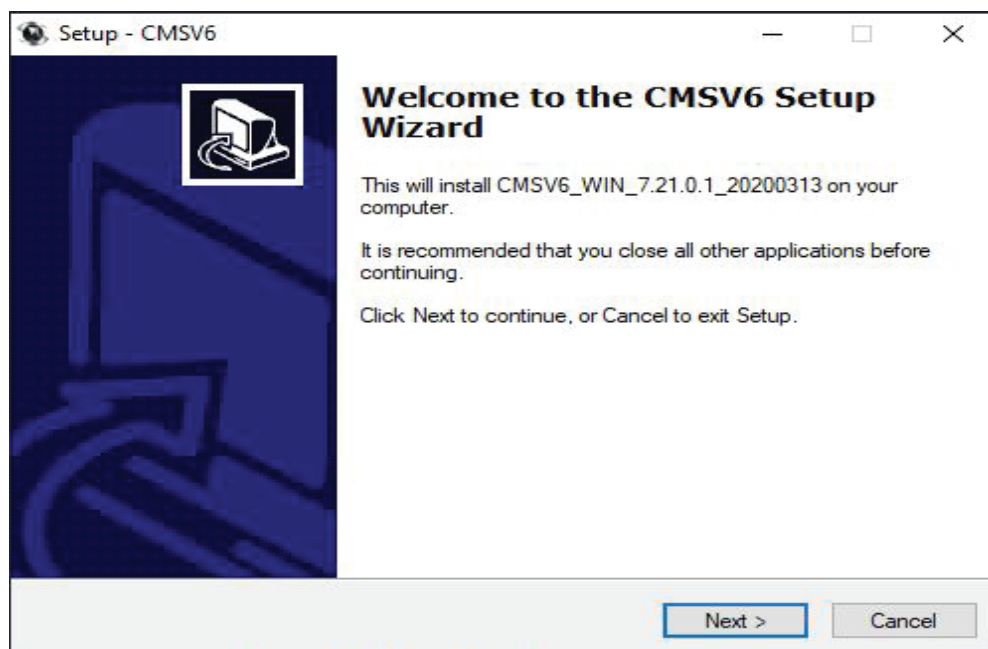
Double-click



CMSV6_WIN_7.21.0.1_20200313

Choose "English", click "OK".

It will show the installation wizard dialog.

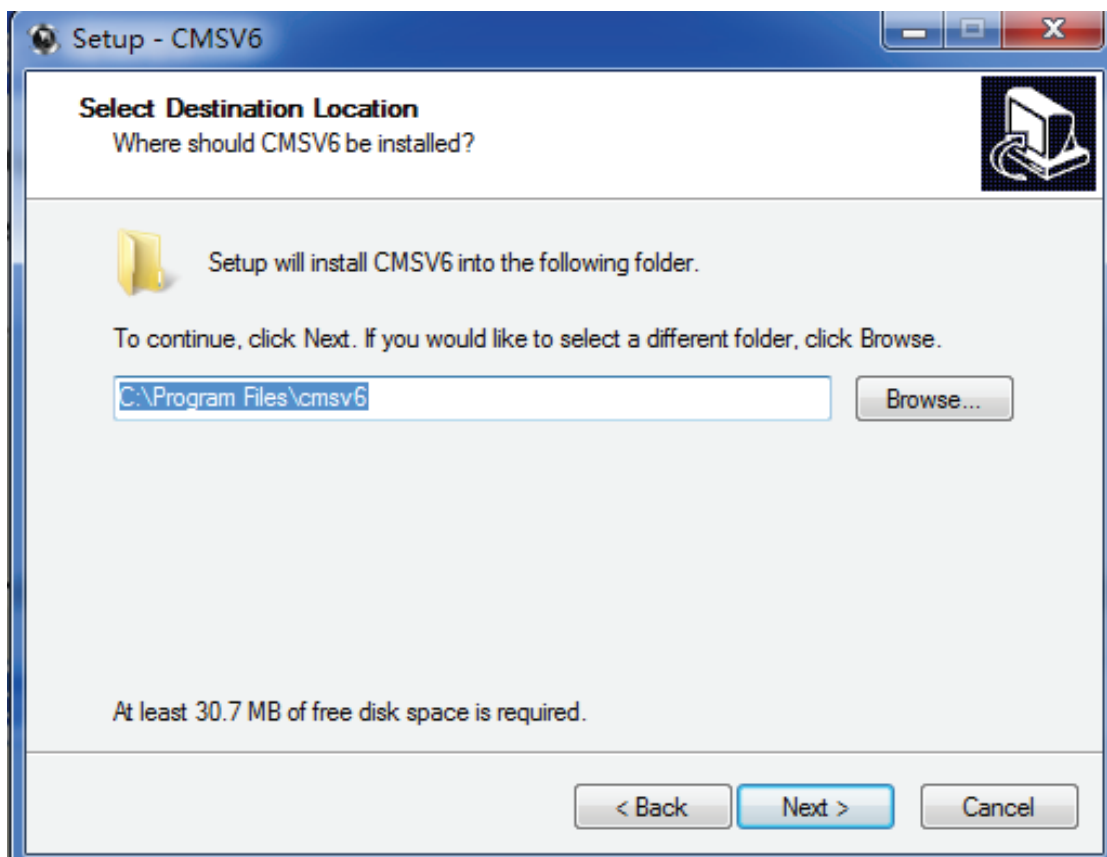


Installation wizard

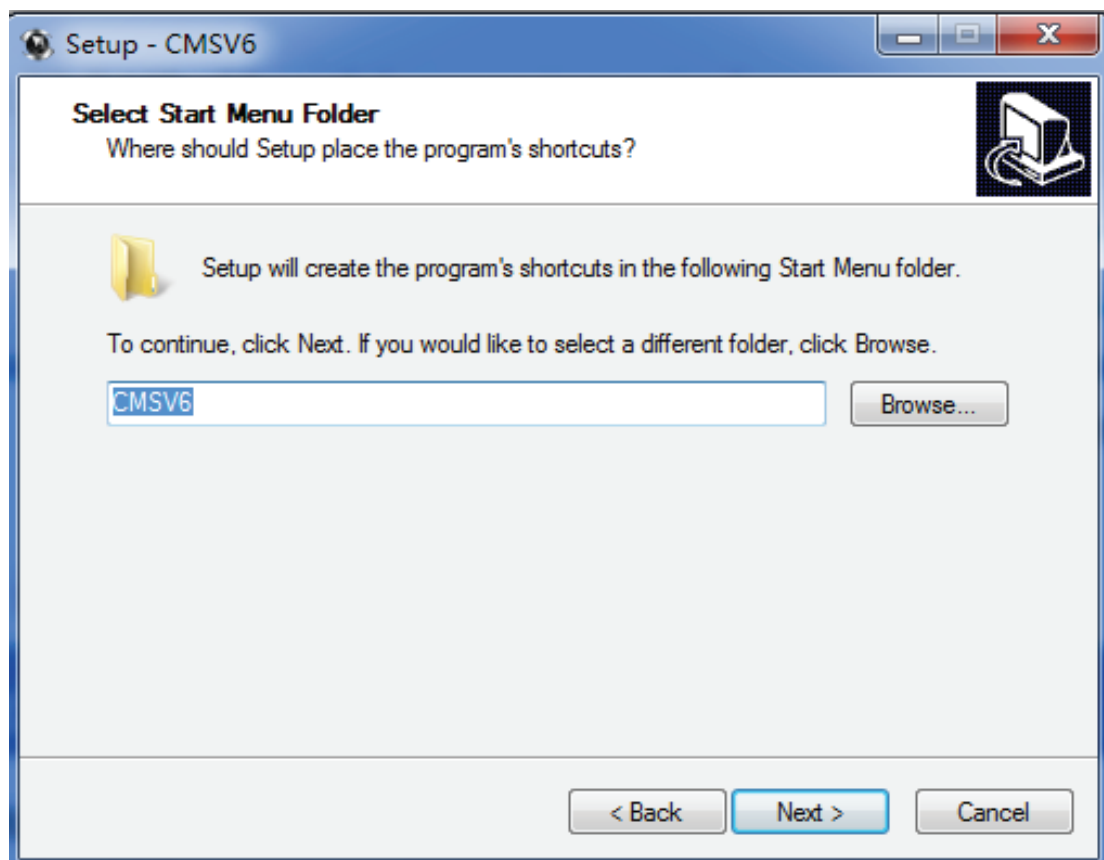
Click "Next" then enter the installation directory selection interface.

The Default directory is :

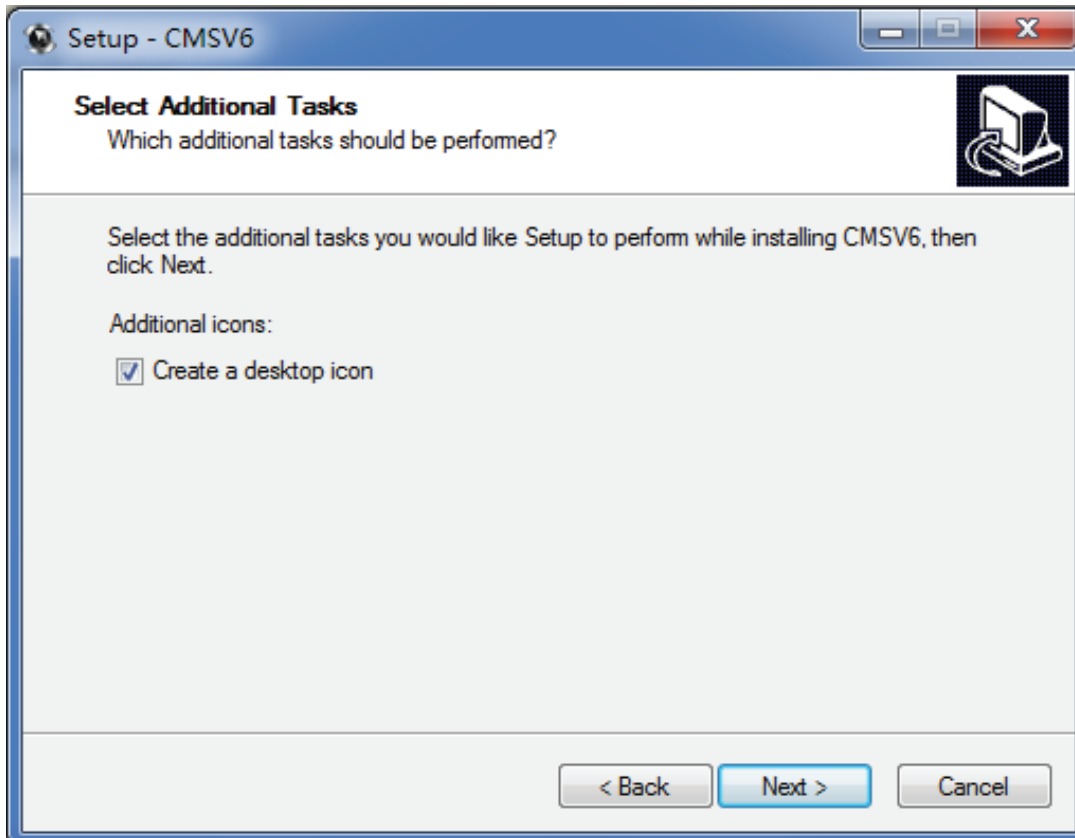
C: \Program Files\CMSV6(Installation directory). To Change the installation path, click on the "Browse" button to select another path.



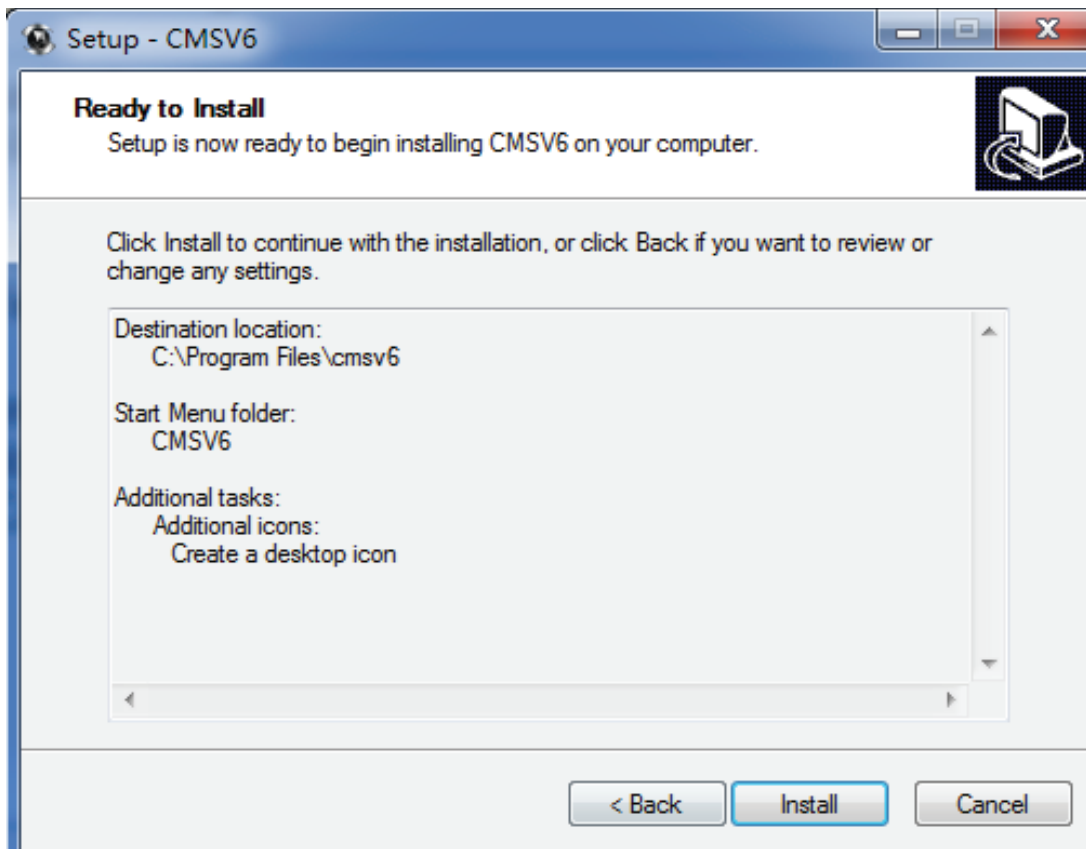
Set a folder name in Start Menu Select an installation directory



Create a desktop shortcut folder name in Start Menu

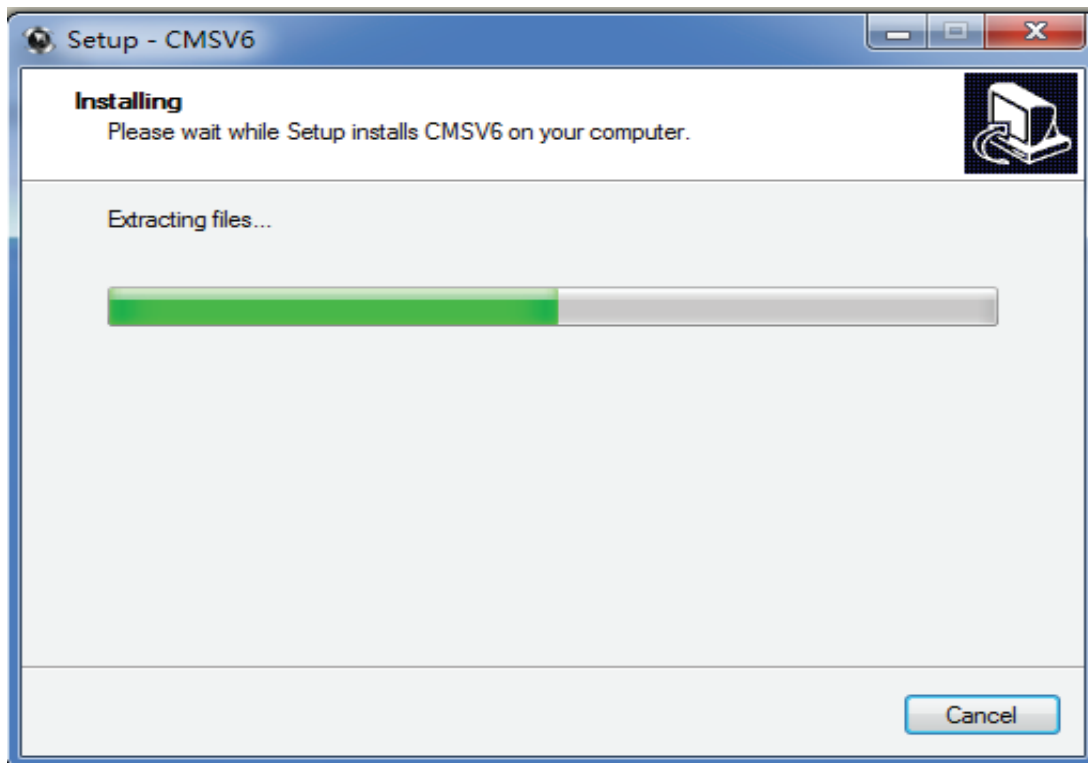


Click "Next" Create desktop shortcut

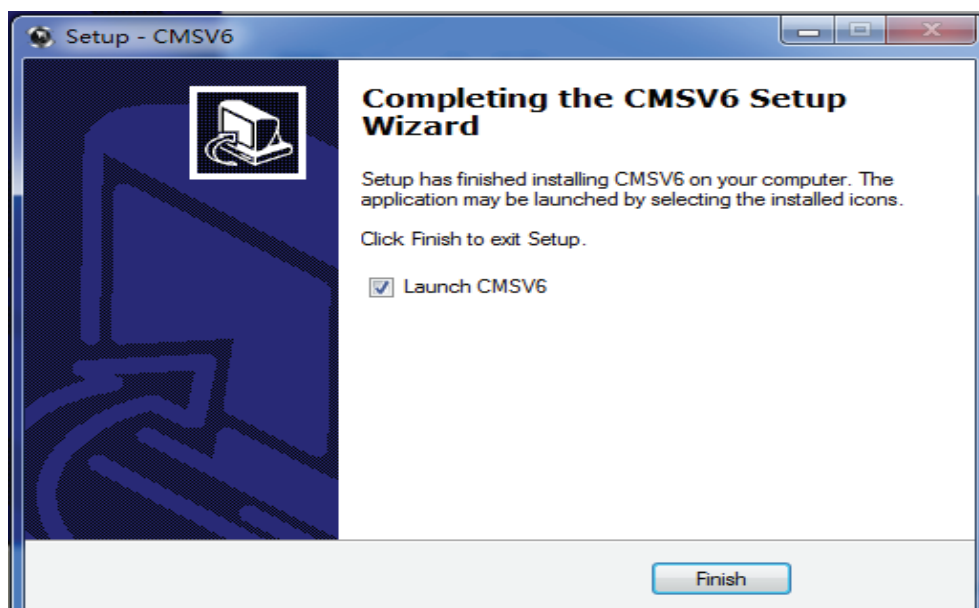


Prepare to install

Click "Install" and start to install it, installing



Click "Finish" and launch CMSV6.

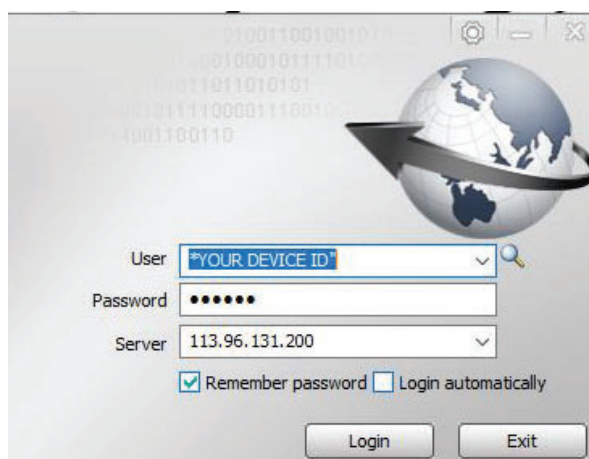


Installation successful

USERNAME: YOUR DEVICE ID/ACCOUNT NUMBER THAT IS LOCATED ON YOUR BLACK BOX

PASSWORD: DEFAULT IS SIX ZEROS: 000000

SERVER IP ADDRESS: 113.96.131.200



CMSV6 Operation Instructions

CMSV6 Introduction

CMSV6 uses many methods including GPS satellite positioning system, the Internet, mobile communications and cloud computing to build a remote monitoring platform for customers. You can manage vehicle/person in different regions by CMSV6.

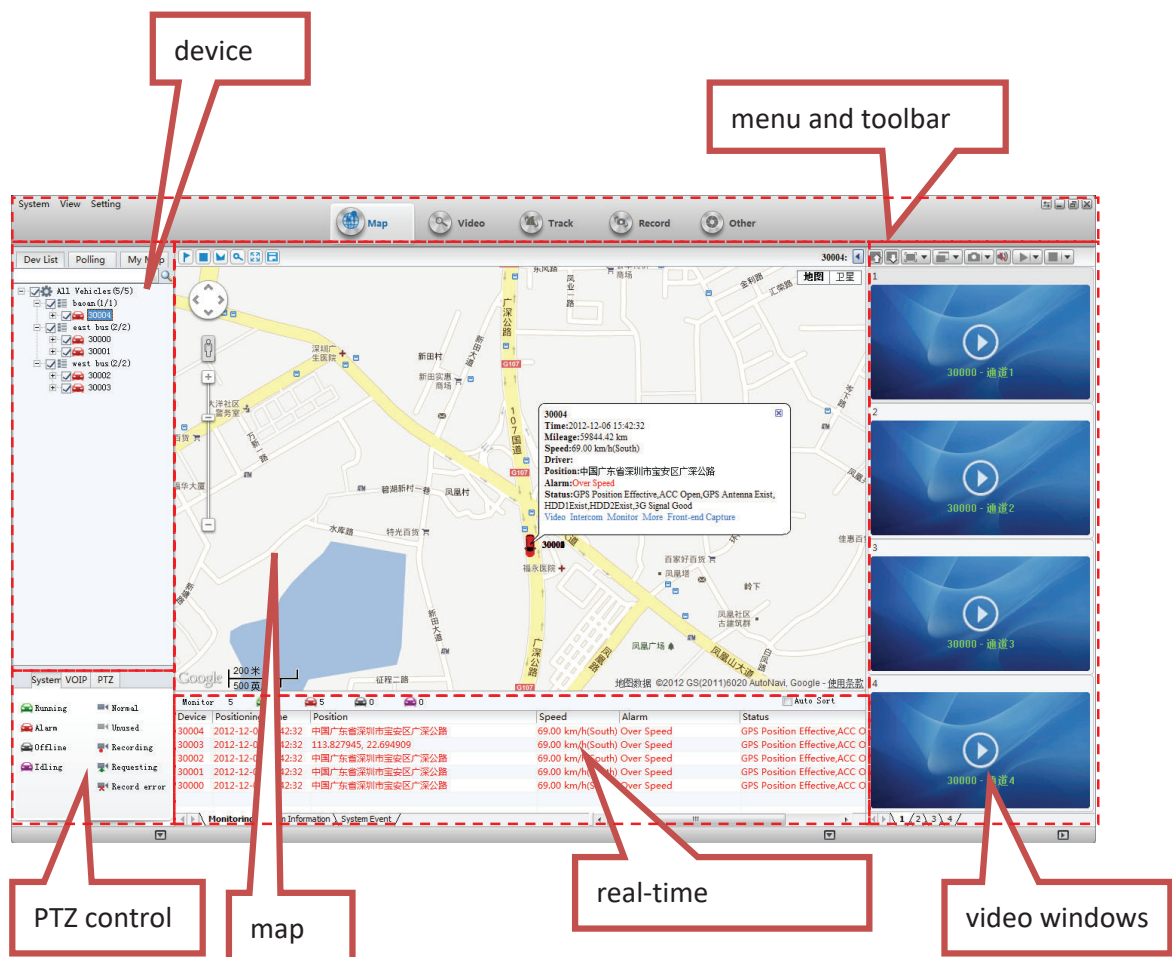
Main Functions

CMSV6 includes some functions: wireless remote real-time video surveillance, GPS map positioning, vehicle history running track playback, voice intercom, alarm linkage, remote video storage, remote download video, remote video playback, local video storage, local video playback, regional management of the vehicle, the device remotely upgrade, etc.

CMSV6 Main Interface

CMSV6 main interface includes these: tool-bar, device list, map window, video windows, information display windows(vehicle running information \ real-time alarm information \ system events),PTZ controller less.

CMSV6 main interface



Function Introduction:

Toolbar: in the top of the window, it includes some buttons: Map, Video, Track, Record, Other, etc.

Map: View on the map the location of the vehicle and other information

Device List: The list information of the vehicle

Video Polling List: CMSV6 will switch these custom-channel video within the specified time.

My Map: Point, surface, a recording of the area marked by the user on the map

System: The overall situation of the vehicles and surveillance video

Voice: Voice speaking and listening

PTZ: Rotation angle, focus, aperture, lights, wipers

Vehicle Monitoring: Display the vehicle information, such as longitude, latitude, the driver, the speed, the vehicle state

Alarm Information: Display the contents of the alarm

System Events: Recording system events, such as login records

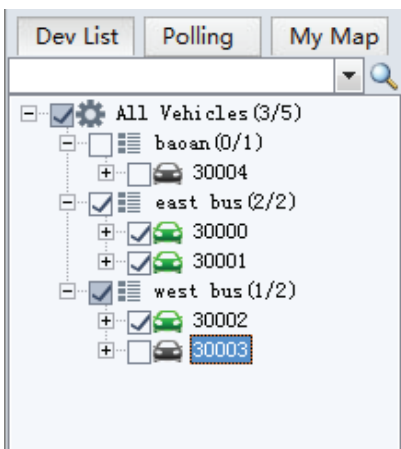
Vehicle Query

Device Online status

Different color of the node means different status. Green means online, Red means alarm and online. Gray means off line.

When the user logs in, the system automatically gets the vehicle list and updates the state of each vehicle.

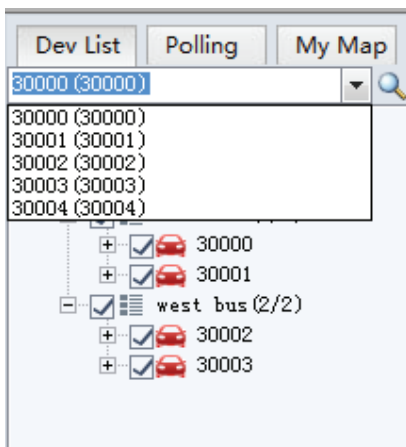
device alarm online status



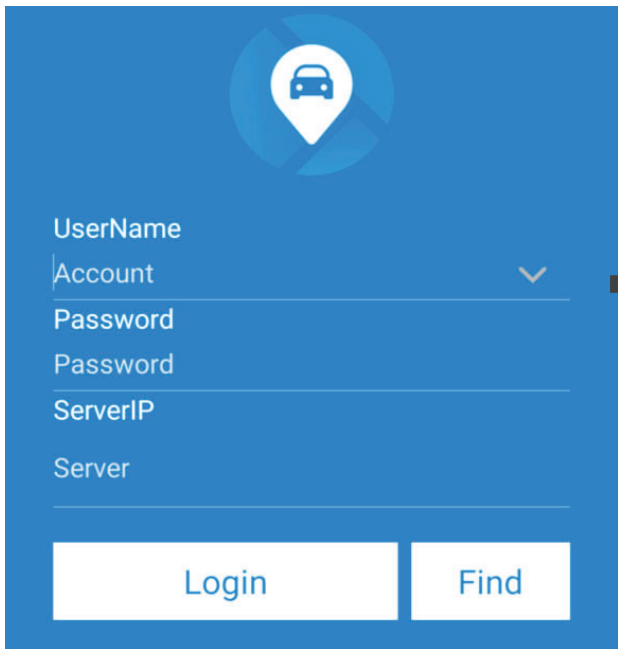
Vehicle Search

input a key word of vehicle name in the edit box. It will show a list. Select a vehicle in the list and press Enter to confirm it. The color of the node of the selected vehicle will be darker.

vehicle search



CMSV7 Login



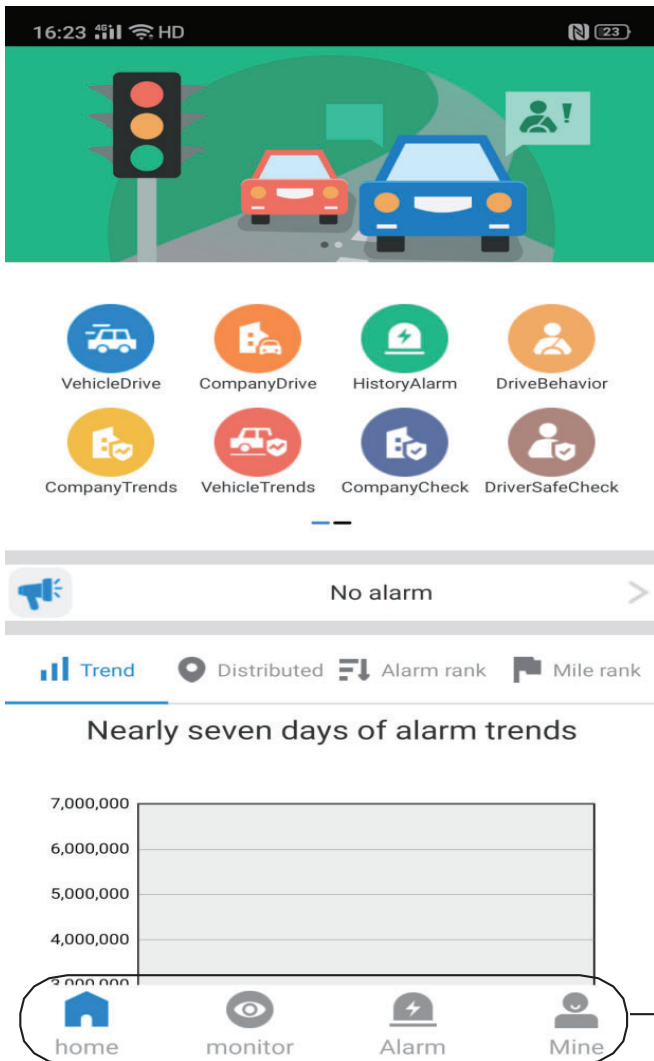
DESCRIPTION

1. Search "CMSV7" in Google Play store or I S APP store
 2. Enter Account User Name/Password: Both will be located on a label on your black bo .
- .Enter Server IP:1 .122.9 .21
Click "Login" to launch APP

2 E :



#2 *USERNAME/PASSWORD DOES NOT APPLY TO CUSTOMERS THAT WERE MIGRATED TO NEW SERVER



Main Page

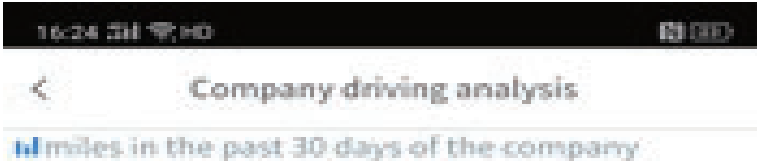
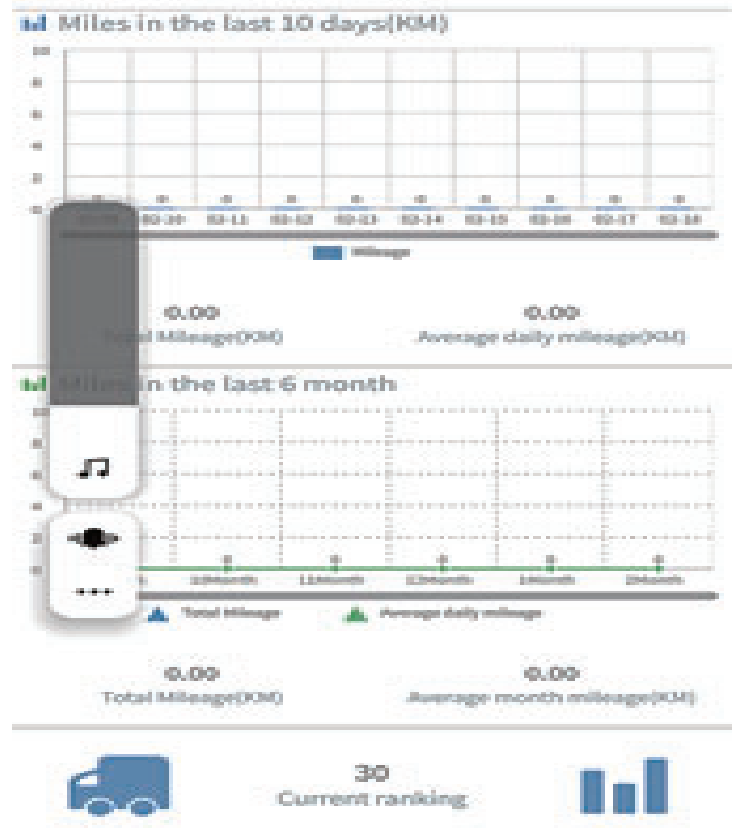
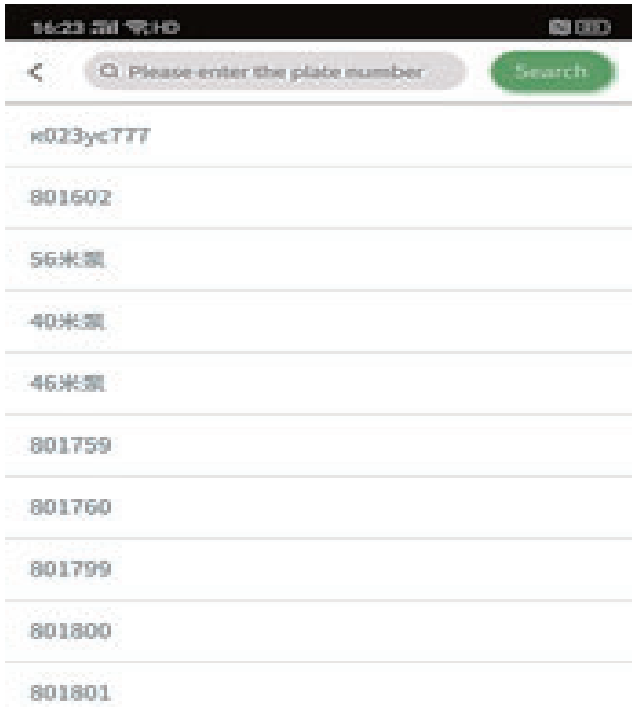
DESCRIPTION

- Home Alarm triggers and driver behavior analysis report
- Monitor View live videos in real time
GPS tracking
Playback/ View videos
- Alarm Vehicle Alarm logs
DSM & ADAS Alert Logs
- MINE Edit user account info,
Switch google/bing maps

Home=>Vehicle Drive

DESCRIPTION

Select Home Button on bottom of app
 Select Vehicle Drive icon - Select your product ID number
 Page will display mileage with time frame statistics



Home=>Company Drive

DESCRIPTION

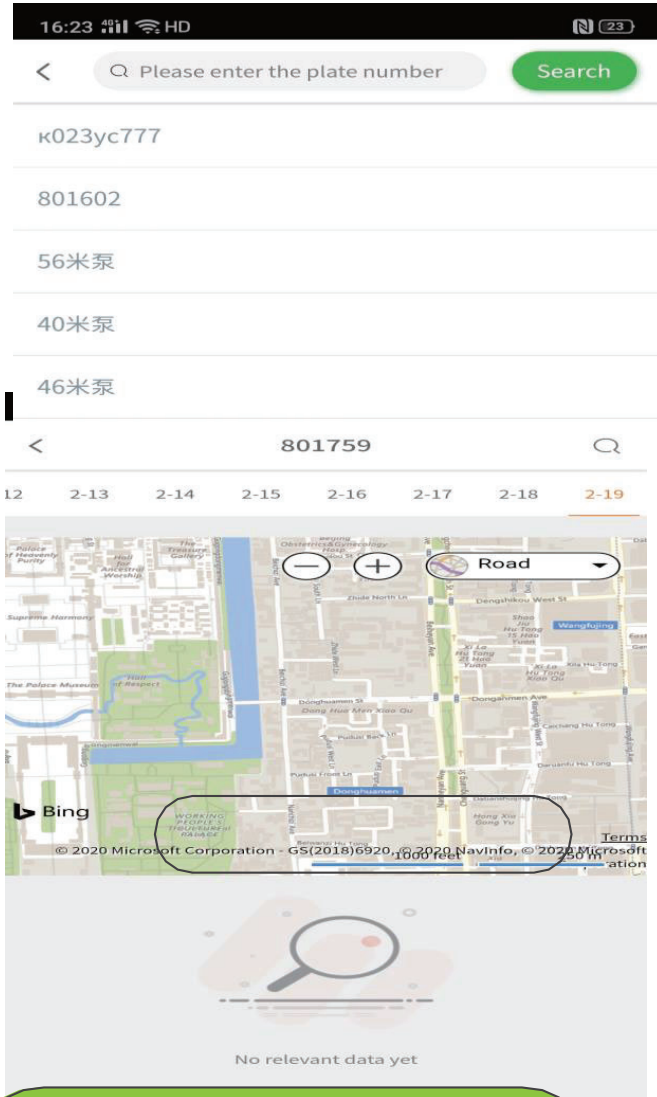
“home”=>Select Company Drive
 Icon=> Select Your Company
 to view company driving
 analysis

The page shows vehicle
 mileage statistics report for all
 devices that are associated
 within your company

the past 30 days Mileage detail

Company	Total mileage of the trip(KM)	Avg mileage	Scale
Guest	0	0.00	0%
	0	0.00	0%
	0	0.00	0%
	0	0.00	0%

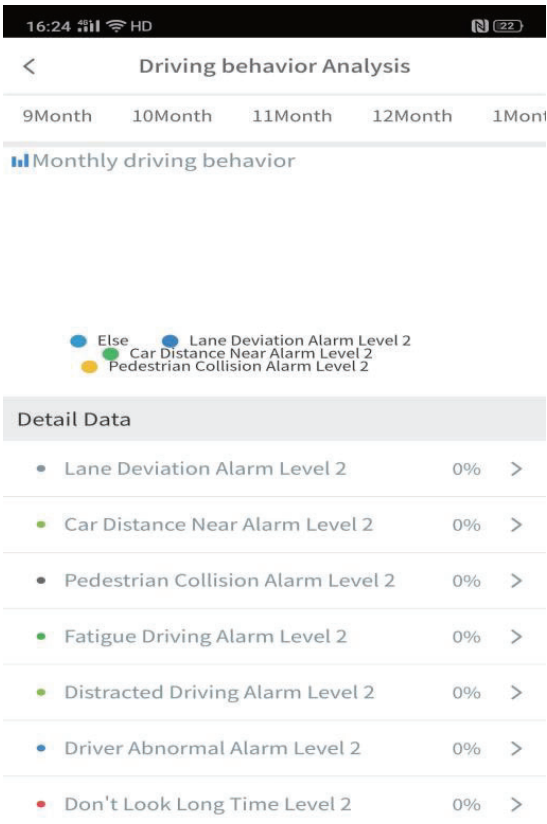
Home=>historyalarm



DESCRIPTION

1. "home"=>"Historyalarm"=> Select Your Vehicle Number=>View history alarm page.
2. The page mainly show the vehicle history alarm logs

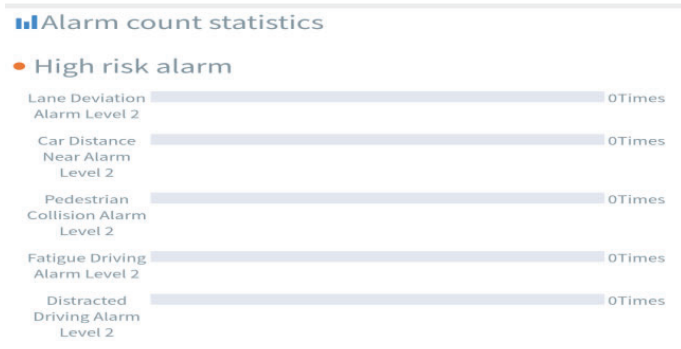
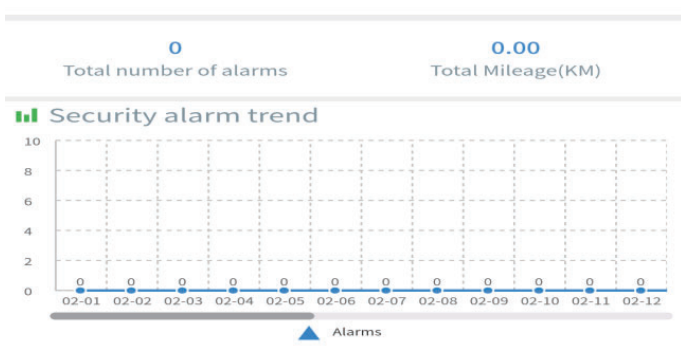
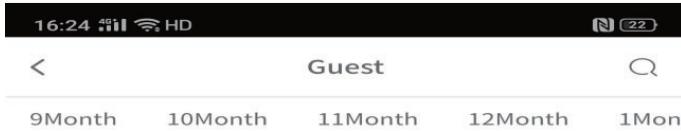
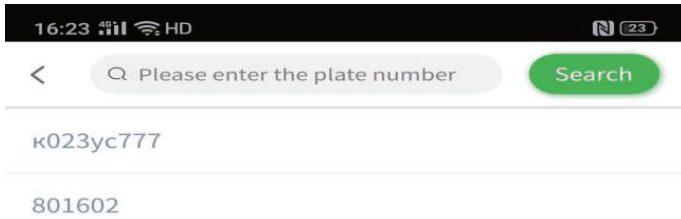
Home=>Driving Behavior



DESCRIPTION

1. "home"=>Driving behavior Analysis"=> Select Your Vehicle Number=>View Driving behavior page.
2. The page mainly shows DSM,ADAS reports. *if applicable

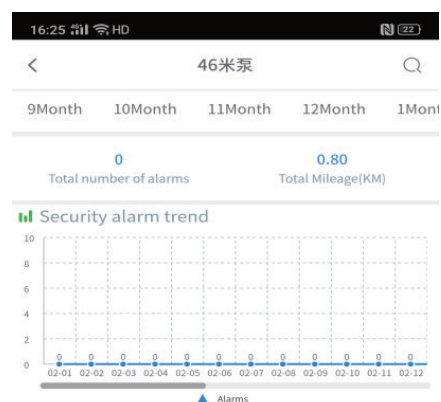
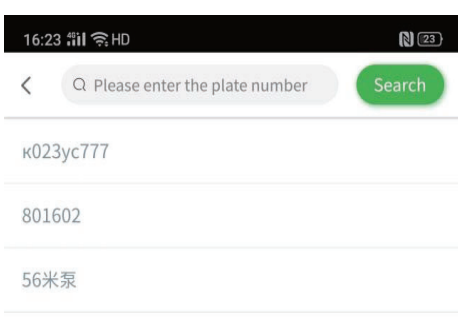
Home=>Company Trend



DESCRIPTION

1. "home"=>" Company Trends"=> Select Your Vehicle Number=>View history alarm page.
2. The page mainly show the vehicle alarms and risk analysis of the account

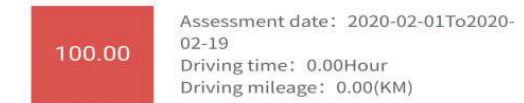
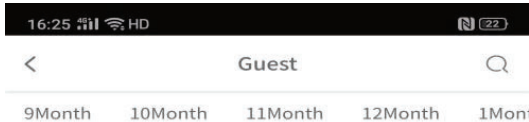
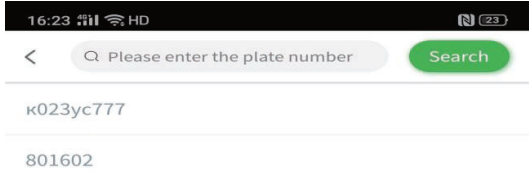
Home=>Vehicle Trend



DESCRIPTION

1. "home"=>Vehicle Trends Analysis"=> Select Your Vehicle Number=>View Vehicle Trend page.
2. The page mainly shows vehicle alarms and risk analysis of the account

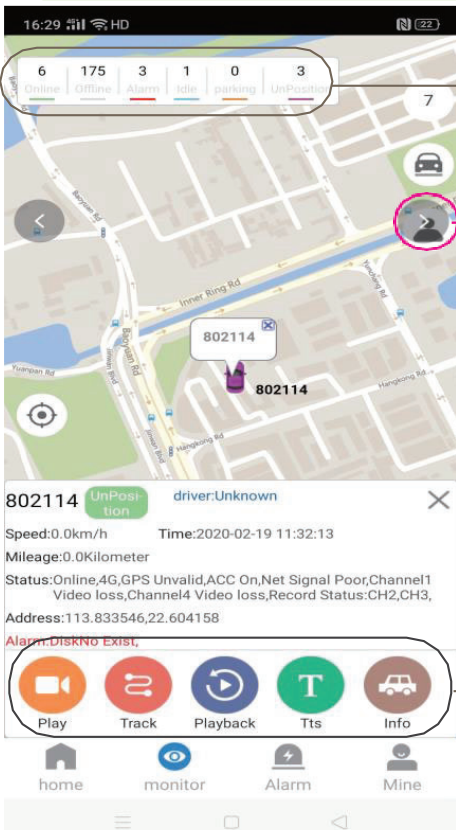
Home=>Company Check



DESCRIPTION

1. "home"=>" Company Check"=> Select Your Vehicle Number=>View history alarm page.
2. The page mainly shows behavior check and risk analysis of the company account

Monitor



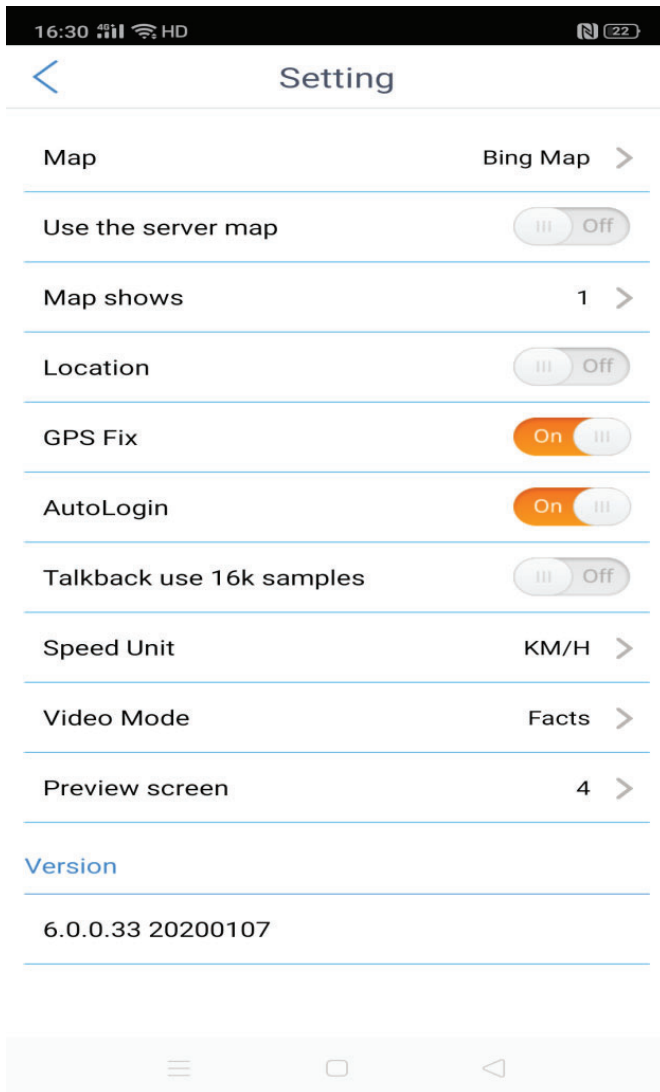
Shows Vehicle status Number

Shows Vehicle list of the account

DESCRIPTION

- "play": Play live videos
- "Trackers": Playback GPS tracker
- "Playback": Playback recorded videos from HDD/SD card
- "TTS": Send TTS message to driver
- "info": Views vehicle info

Mine



DESCRIPTION

1. "mine" => "setting" => to switch maps and other setup
2. APP default Bing maps for use