

# INSTRUCTIONAL MANUAL

## 4G LIVE STREAMING 1080 MDVR



### New Server Migration Reasons:

Old server can not meet the requirements of development for more 4G MDVR devices on the IP server. Having too many devices on an older server causes buffering when viewing video. Enjoy our new server for better service experience.

Additional Quick Start Process available below if you have these discontinued 4G MDVR products

1st Gen



2nd Gen



\*Note - All 4G MDVR devices will be using the NEW, IMPROVED, UPDATED IP SERVER & PORT #

NEW URL IP SERVER THAT WILL BE USED IS: <http://113.96.131.200/808gps/login.html>

Click or copy and paste IP Server link to your browser.

**MUST ENABLE / ALLOW "FLASH" after you have entered new IP server URL into your browser**

# SECTION 1: INSTALLATION DIAGRAM

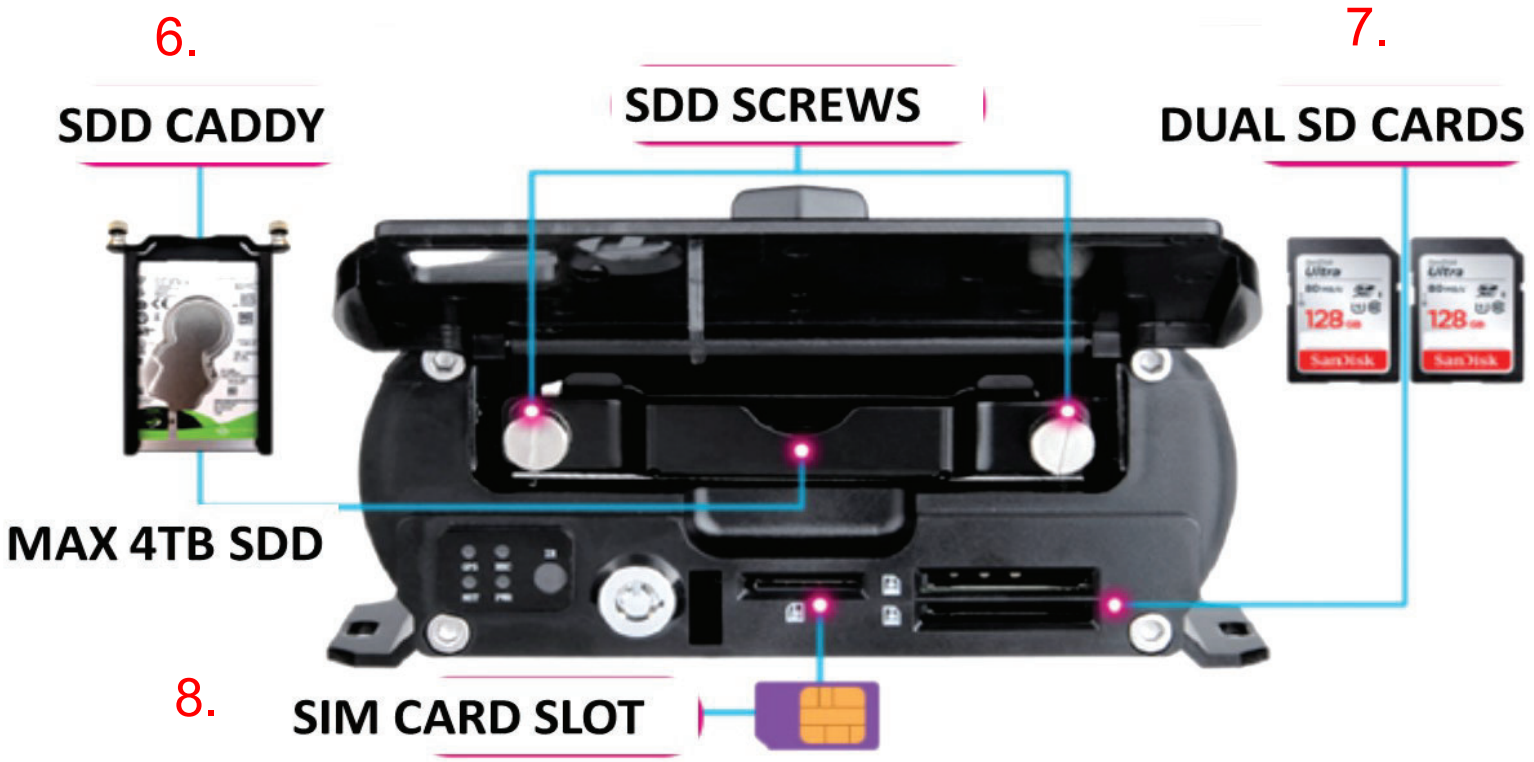
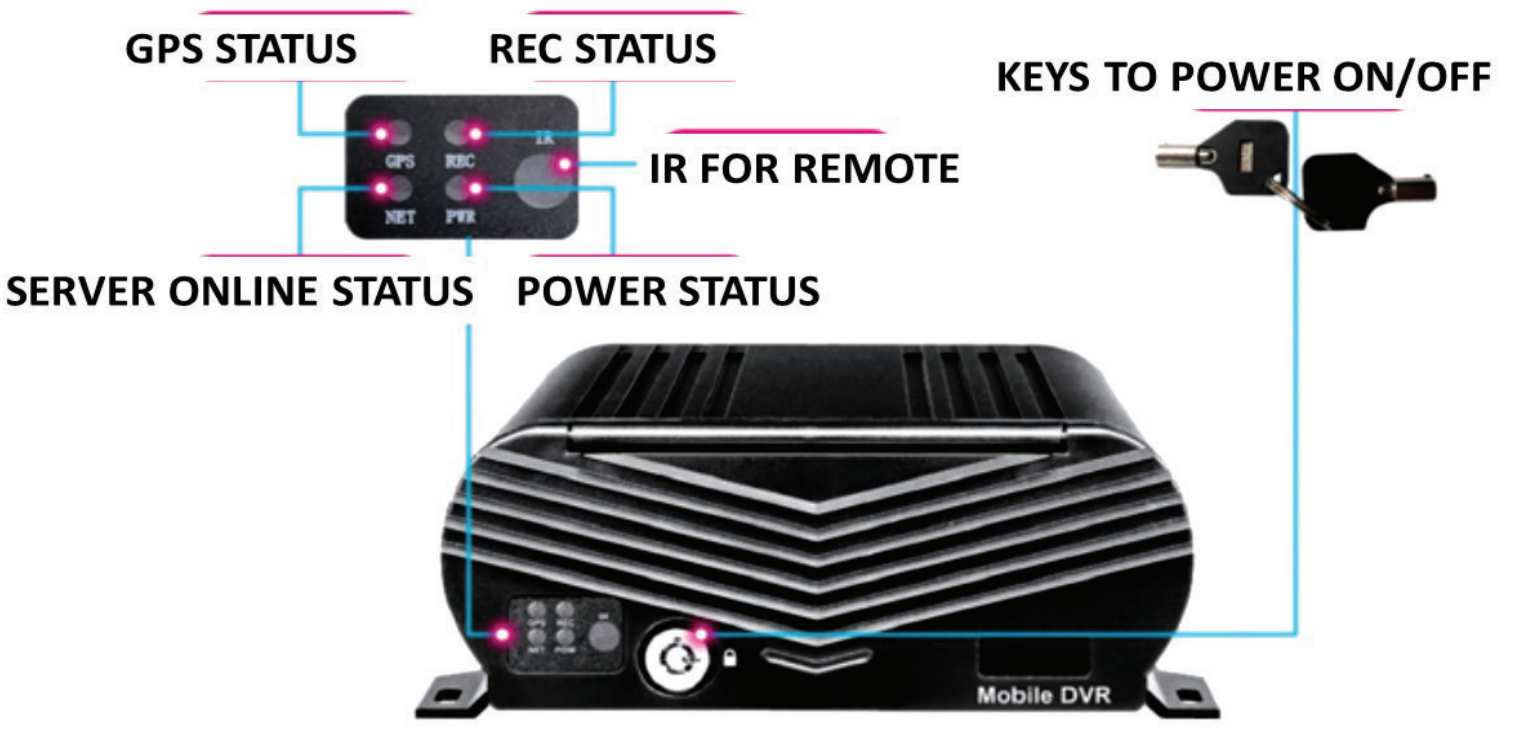
1. Where to Install DVR Power Cables to DVR
2. Where to Install LCD Power & Video Cables to DVR
3. Where to Install Camera Cables to DVR
4. Where to Install GPS Antenna to DVR
5. Where to Install WIFI Antenna



- 6. Where to install SDD Caddy
- 7. Where to insert SD Cards
- 8. Where to insert 4G Sim Cards

### How to Turn ON/OFF DVR

Once black box has been connected to a power source. You can turn off the unit by turning the DVR lock to the unlock position with the key. To turn DVR back on again turn lock the lock position. After key is in the lock position, allow 3-4 min for the device to fully power on, connect to GPS, connect to your 4G sim card carrier.

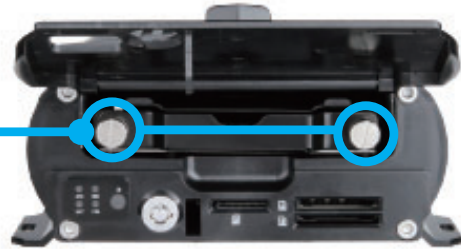


## SDD Caddy Installation

1 Open MNVR Shell with included Keys



2 Twist screws and take out of the SD Caddy

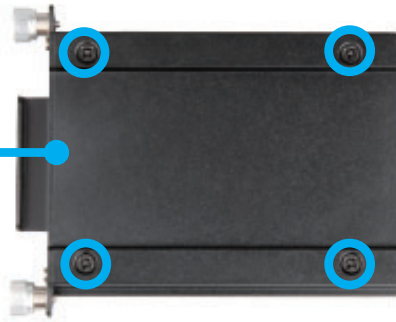


3 Insert SDD Into SDD Caddy

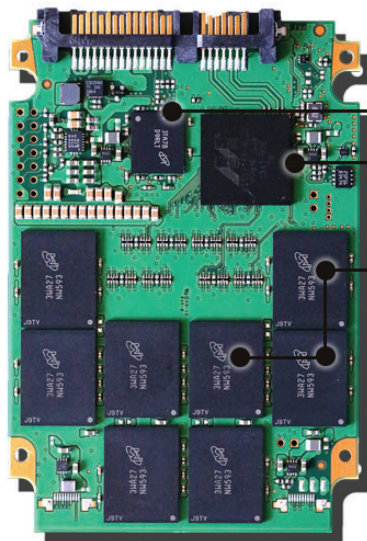


Insert & attach screws to SDD Caddy

4 Screws SDD and Insert SD Caddy



### SSD 2.5"



Cache  
Controller  
NAND Flash Memory

- FASTER PERFORMANCE
- NO VIBRATIONS OR NOISE
- MORE ENERGY EFFICIENT

Shock resistant up to 1500g  
(operating and non-operating)