

# How to Download Windows Desktop/Laptop Viewing Software

Step 1- **Copy and paste IP Server link to your browser. 76.184.134.40:8080/808gps/login.html?**

FalconEye Vehicle Monitor System

Home API English Download

Welcome

Username

Please enter your password

Code 4403

Login

Security Intelligence  
Multi-Dimensional, Full-Process Security Management  
Through AI Intelligent System

Windows Version  
Download Version:7.24.0.1 Update:20201030


IOS Version  
Download Version:1.3.2 Update:20201028

Android Version  
Download Version:6.0.0.40 Update:20201028

Playback  
Download Version:7.24.0.1 Update:20201029

MapInfo Plug-in  
Download Version:5.0 Update:20140815

Step 2- Follow process to download Falcon Electronics cloud platform / client server website for remote viewing on desktop or laptop.

Double-click 

CMSV6\_WIN\_7.21.0.1\_20200313

Choose "English", click "OK".

It will show the installation wizard dialog.

Setup - CMSV6

Welcome to the CMSV6 Setup Wizard

This will install CMSV6\_WIN\_7.21.0.1\_20200313 on your computer.

It is recommended that you close all other applications before continuing.

Click Next to continue, or Cancel to exit Setup.

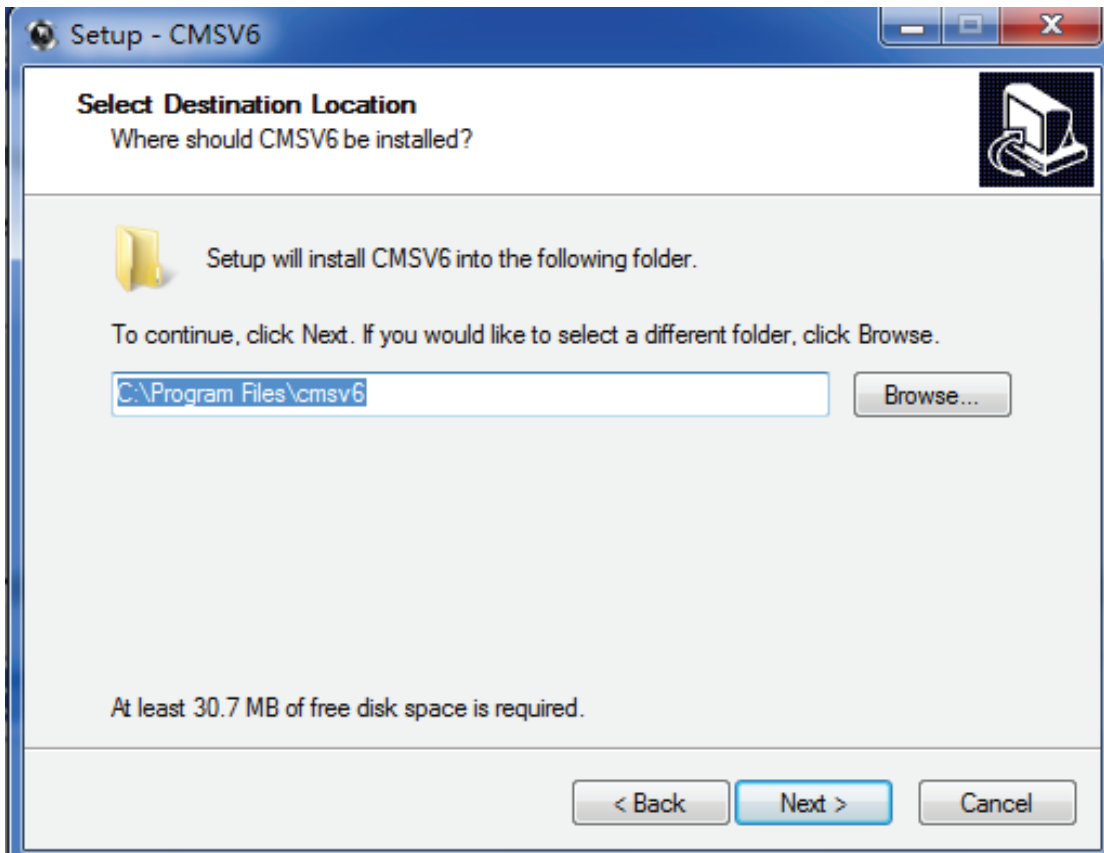
Next > Cancel

## Installation wizard

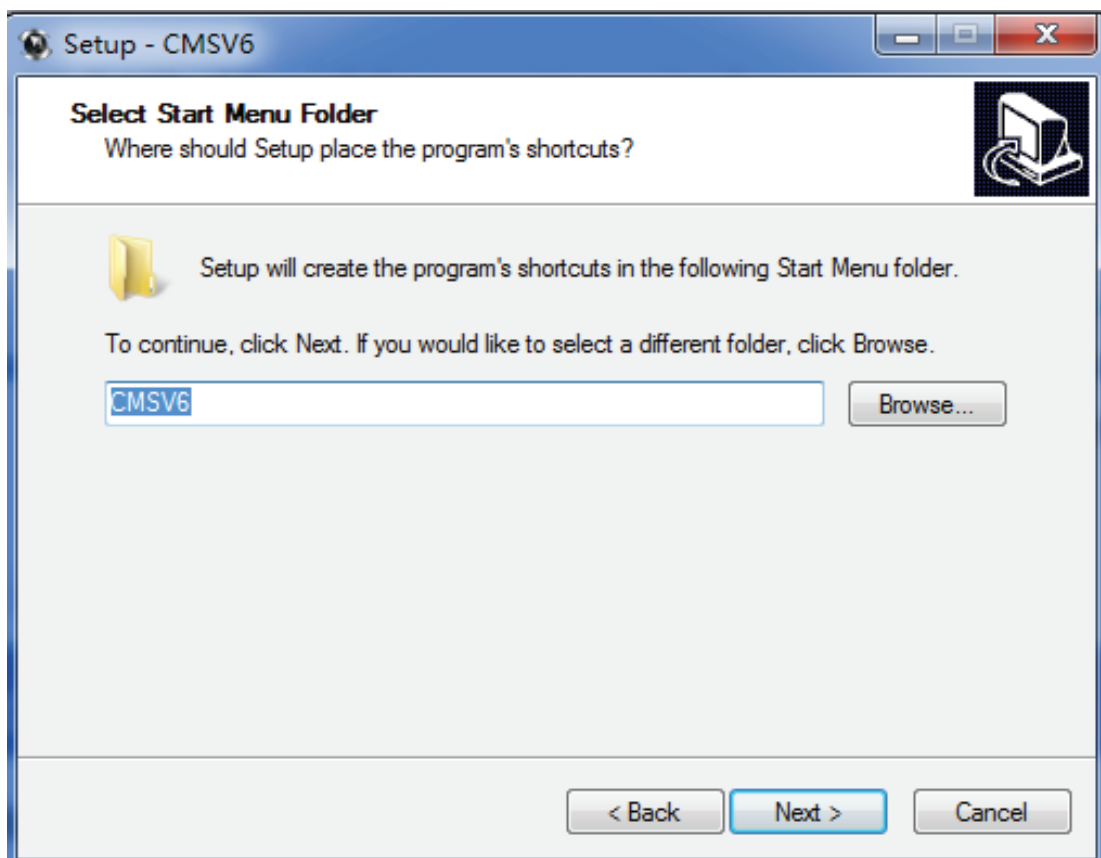
Click "Next" then enter the installation directory selection interface.

The Default directory is :

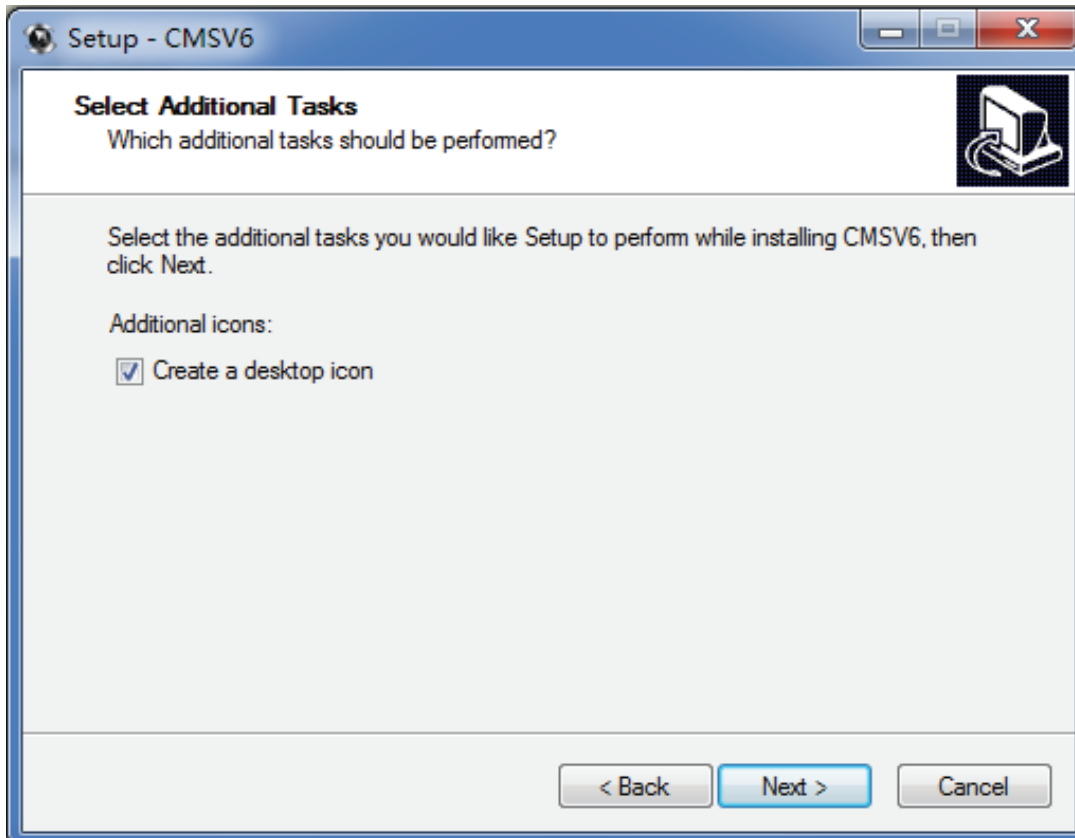
C: \Program Files\CMSV6(Installation directory). To Change the installation path, click on the "Browse" button to select another path.



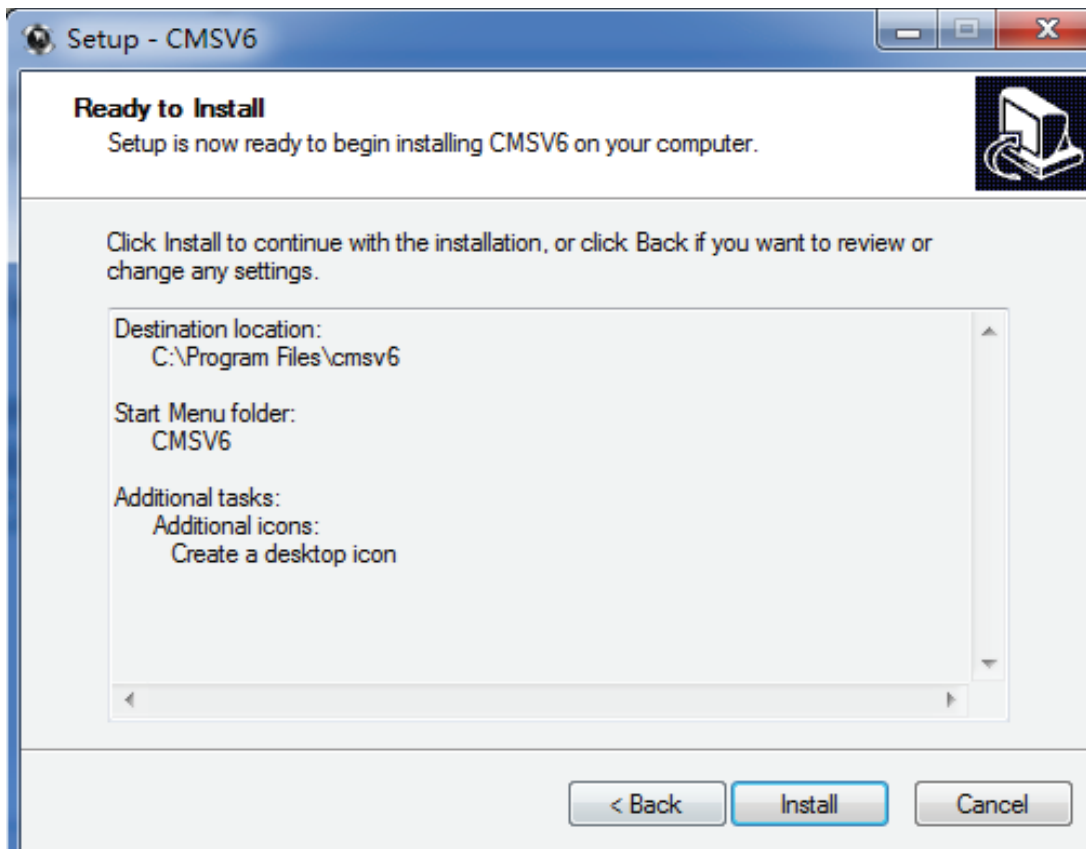
Set a folder name in Start Menu Select an installation directory



Create a desktop shortcut folder name in Start Menu

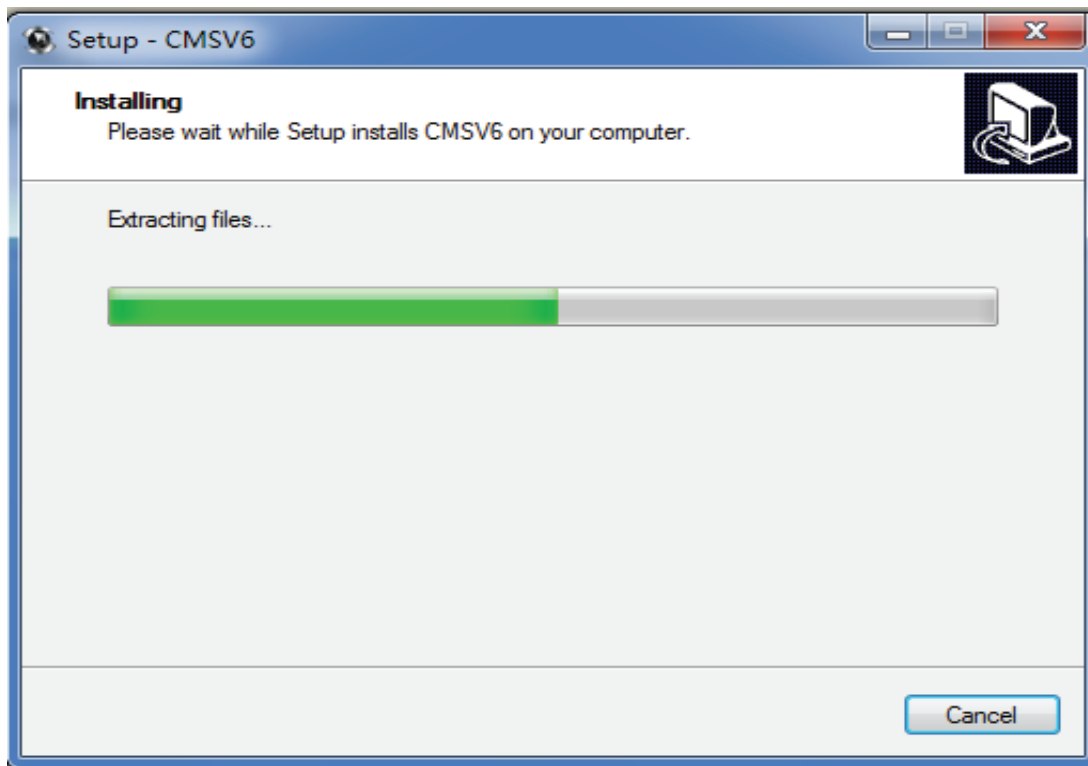


Click "Next" Create desktop shortcut

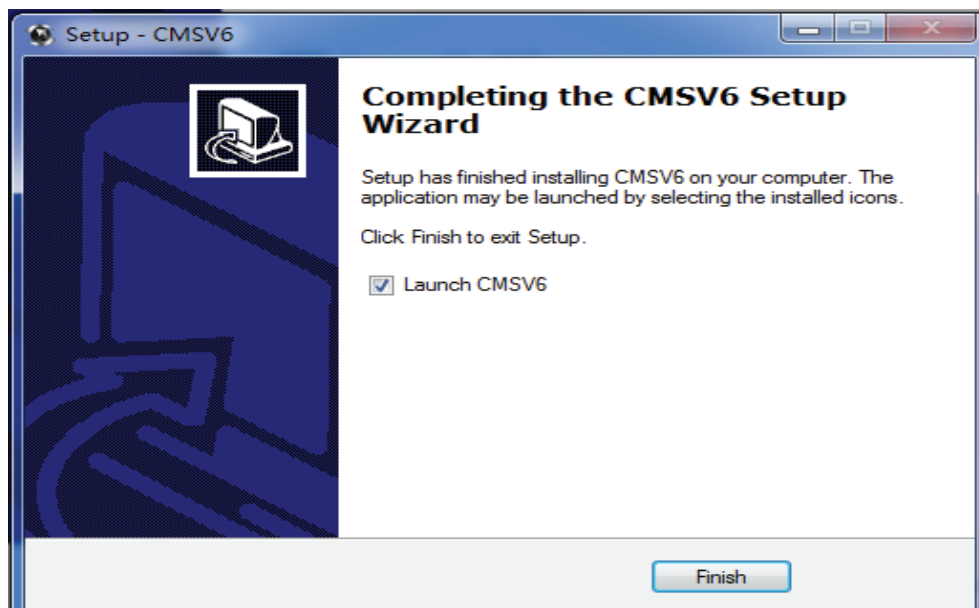


Prepare to install

Click "Install" and start to install it, installing



Click "Finish" and launch CMSV6.

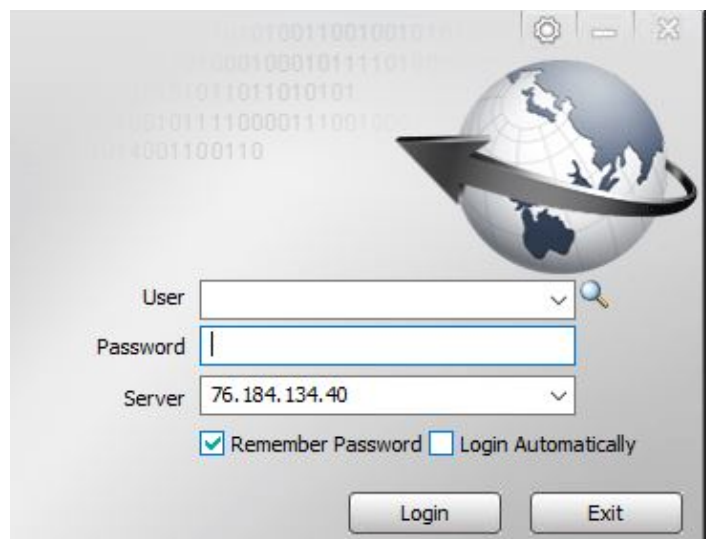


Installation successful

**USERNAME: YOUR DEVICE ID/ACCOUNT NUMBER THAT IS LOCATED ON YOUR BDEVICE**

**PASSWORD: DEFAULT IS SIX NINES: 999999**

**SERVER IP ADDRESS: 76.184.134.40**



# CMSV6 Operation Instructions

## CMSV6 Introduction

CMSV6 uses many methods including GPS satellite positioning system, the Internet, mobile communications and cloud computing to build a remote monitoring platform for customers. You can manage vehicle/person in different regions by CMSV6.

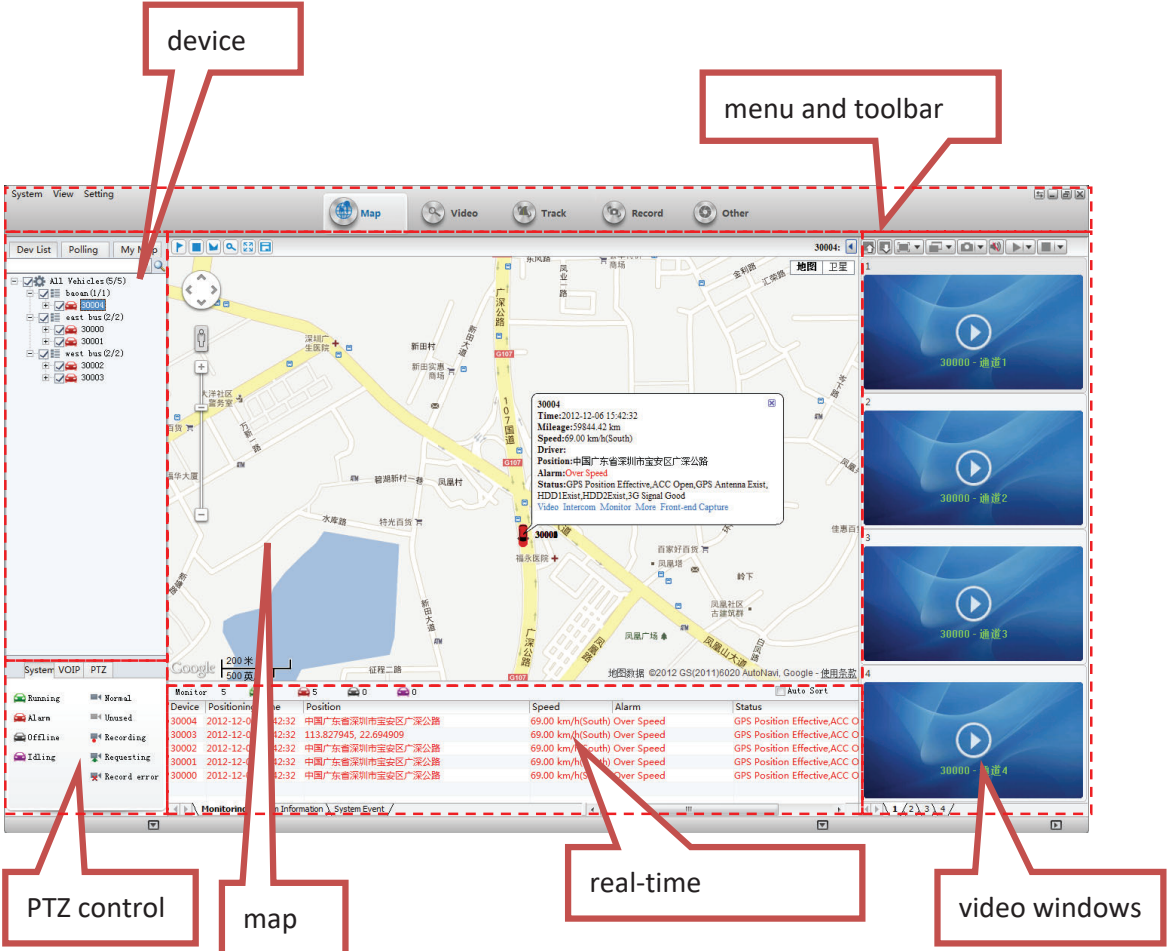
## Main Functions

CMSV6 includes some functions: wireless remote real-time video surveillance, GPS map positioning, vehicle history running track playback, voice intercom, alarm linkage, remote video storage, remote download video, remote video playback, local video storage, local video playback, regional management of the vehicle, the device remotely upgrade, etc.

## CMSV6 Main Interface

CMSV6 main interface includes these: tool-bar, device list, map window, video windows, information display windows(vehicle running information \ real-time alarm information \ system events ),PTZ controller less.

CMSV6 main interface



## Function Introduction:

Toolbar: in the top of the window, it includes some buttons: Map, Video, Track, Record, Other, etc.

Map: View on the map the location of the vehicle and other information

Device List: The list information of the vehicle

Video Polling List: CMSV6 will switch these custom-channel video within the specified time.

My Map: Point, surface, a recording of the area marked by the user on the map

System: The overall situation of the vehicles and surveillance video

Voice: Voice speaking and listening

PTZ: Rotation angle, focus, aperture, lights, wipers

Vehicle Monitoring: Display the vehicle information, such as longitude, latitude, the driver, the speed, the vehicle state

Alarm Information: Display the contents of the alarm

System Events: Recording system events, such as login records

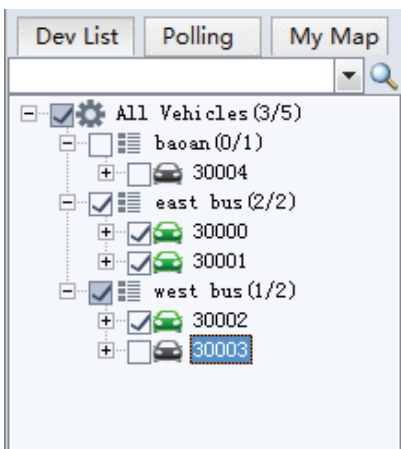
## Vehicle Query

### Device Online status

Different color of the node means different status. Green means online, Red means alarm and online. Gray means off line.

When the user logs in, the system automatically gets the vehicle list and updates the state of each vehicle.

device alarm online status



### Vehicle Search

input a key word of vehicle name in the edit box. It will show a list. Select a vehicle in the list and press Enter to confirm it. The color of the node of the selected vehicle will be darker.

vehicle search

