

# 4G/WIFI/GPS Live Viewing 1080P 3-8 Cam MNVR Black box with SDD

## Desktop Viewing Software Operation Manual

Step 1- CLICK HERE to redirect to IP Server URL.  
(IP Server page will look like the picture below)

Step 2- Select "Windows Version" and follow the  
process on page 2.

<http://113.96.131.200/808gps/login.html>

Beidou Active Security Cloud Platform API English

Welcome

Username

Please Enter Your Password

Code 8583

Login

Step 2

Windows Version  
Version:7.21.0.1  
Update:20200313

IOS Version  
Version:1.1.5  
Update:20191228

Android Version  
Version:6.0.0.32  
Update:20200104

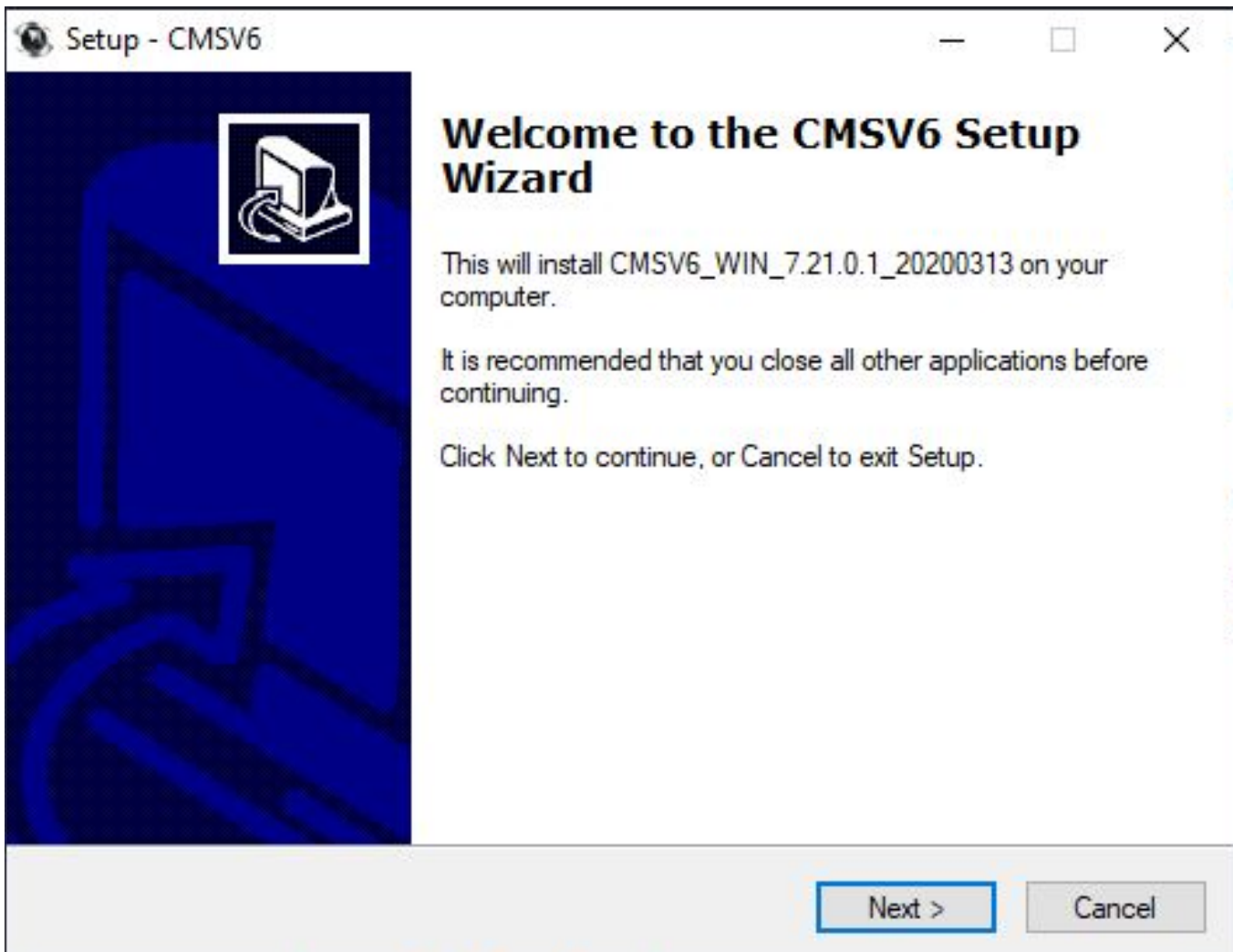
# 1. CMSV6 Installation Instructions

1. Double-click



CMSV6\_WIN\_7.21.0.1\_20200313

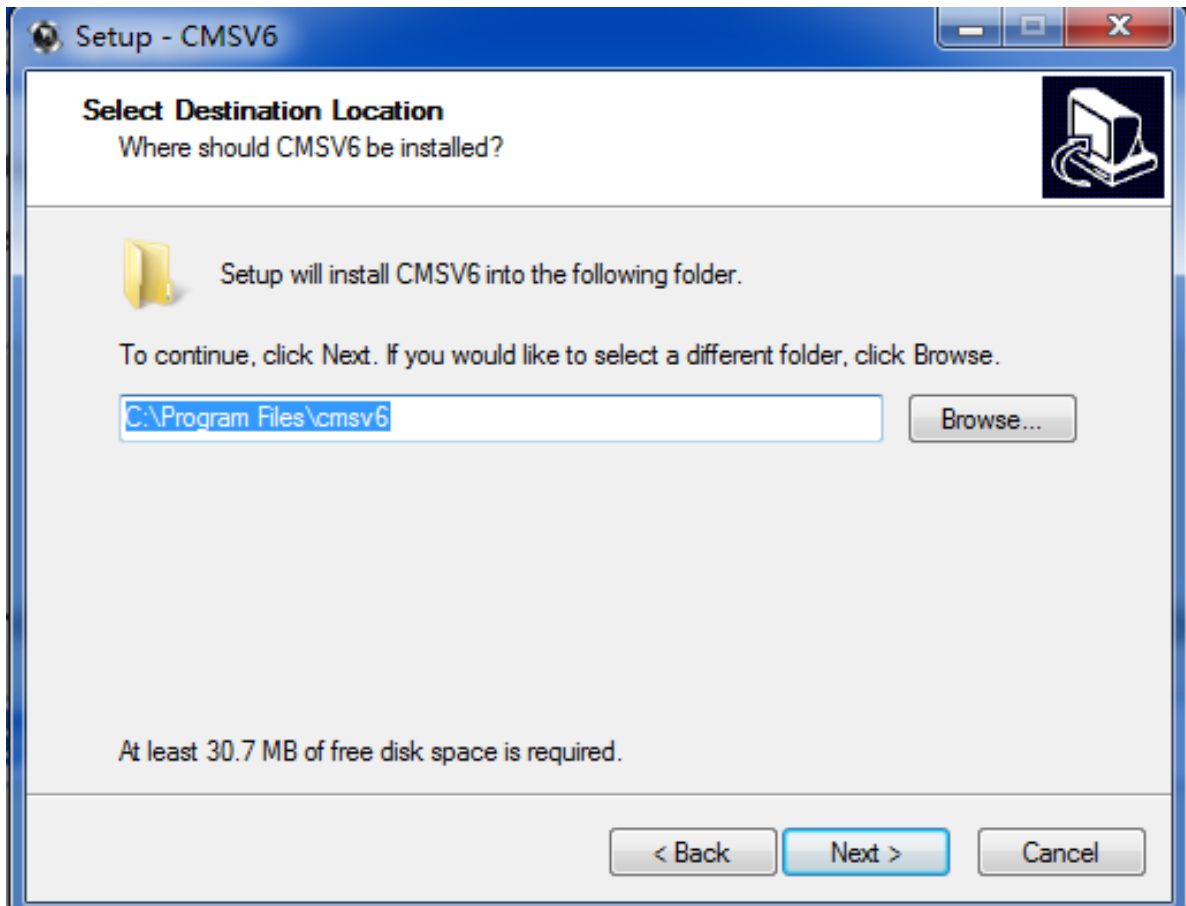
2. Choose “English”, click “OK”. It will show the installation wizard dialog.



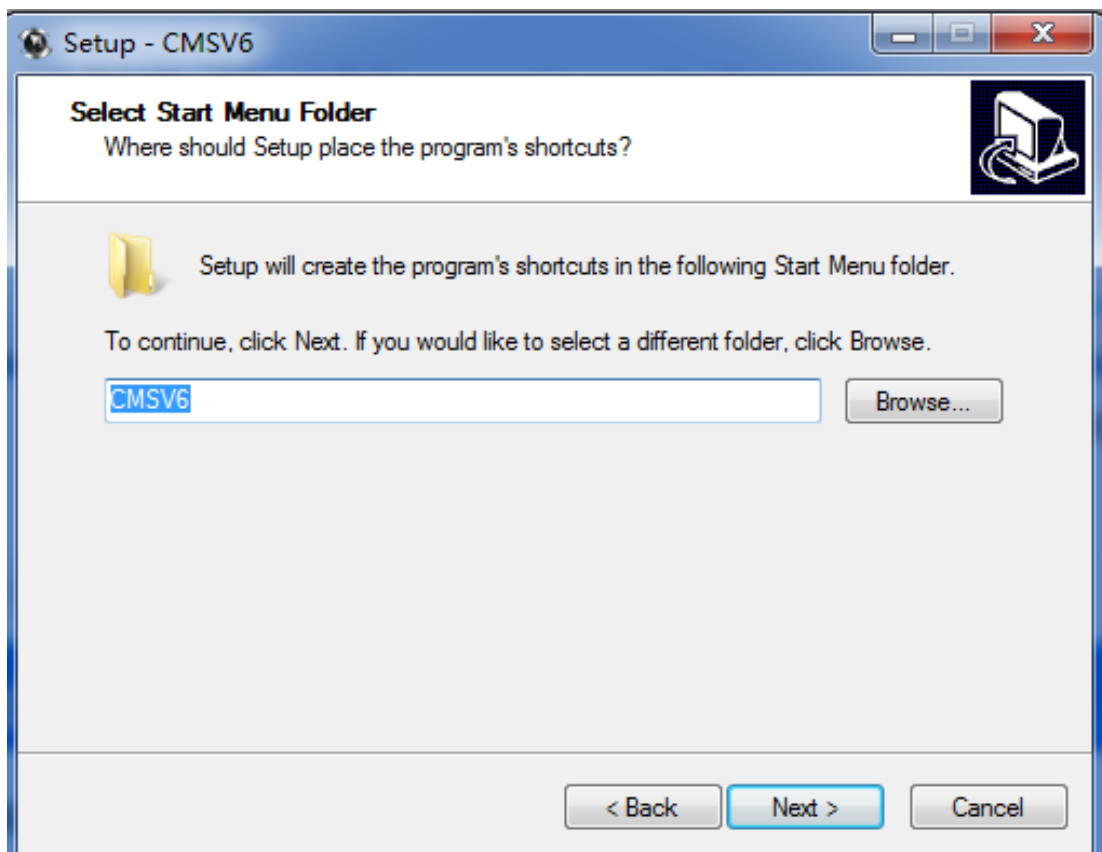
## Installation wizard

3. Click "Next" then enter the installation directory selection interface. The Default directory is :

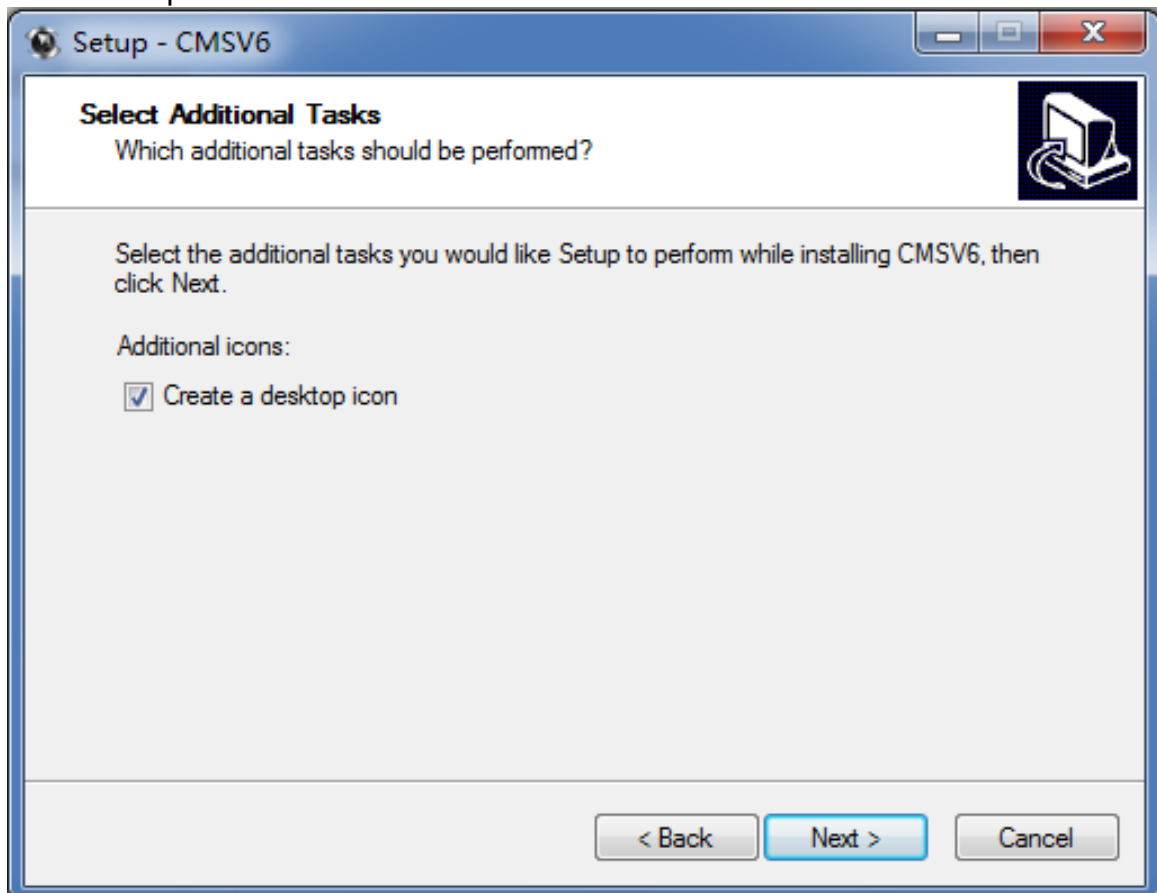
C:\Program Files\CMSV6(Installation directory). To Change the installation path, click on the "Browse" button to select another path.



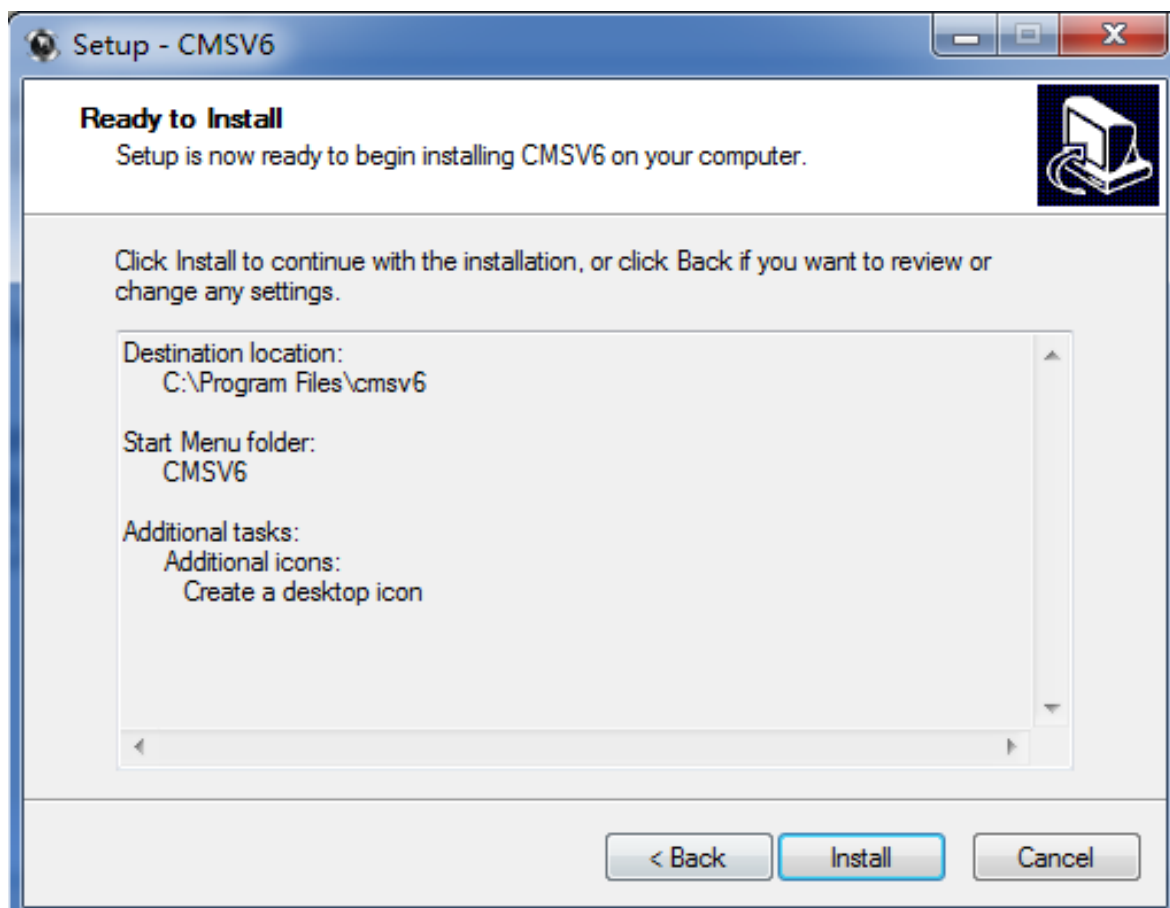
4. Set a folder name in Start Menu. Select an installation directory



5. Create a desktop shortcut folder name in Start Menu

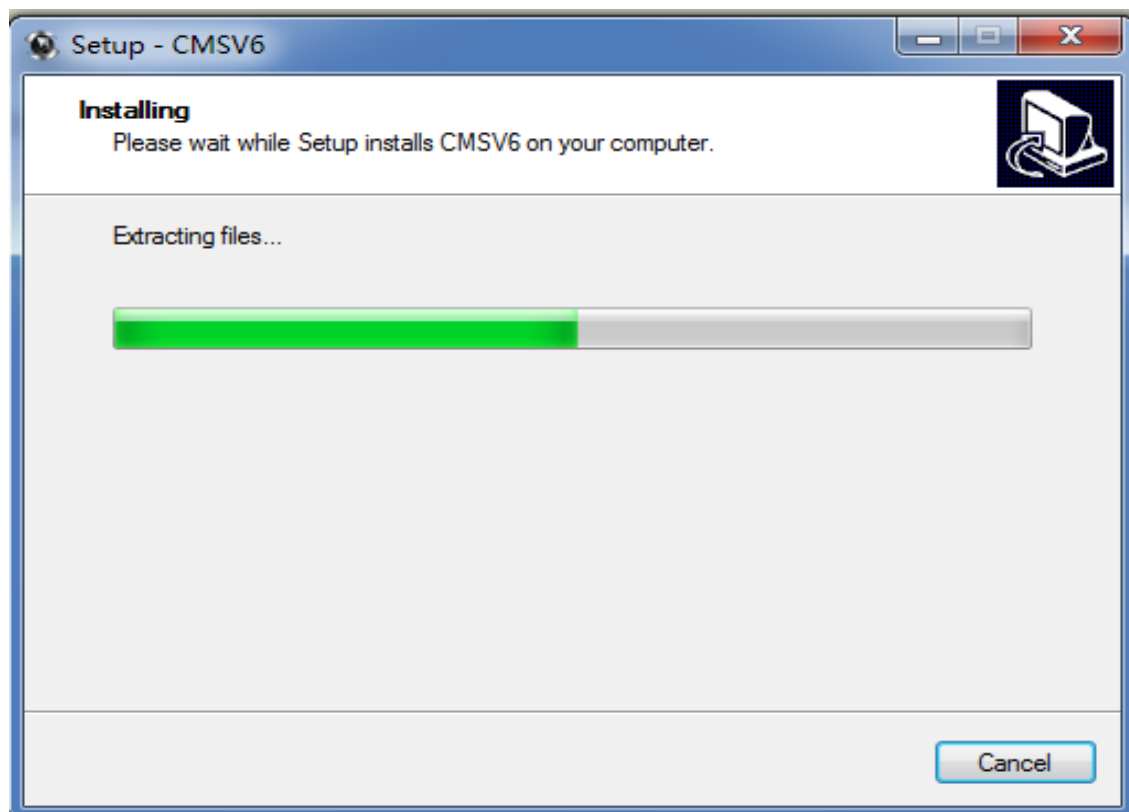


6. Click "Next". Create desktop shortcut



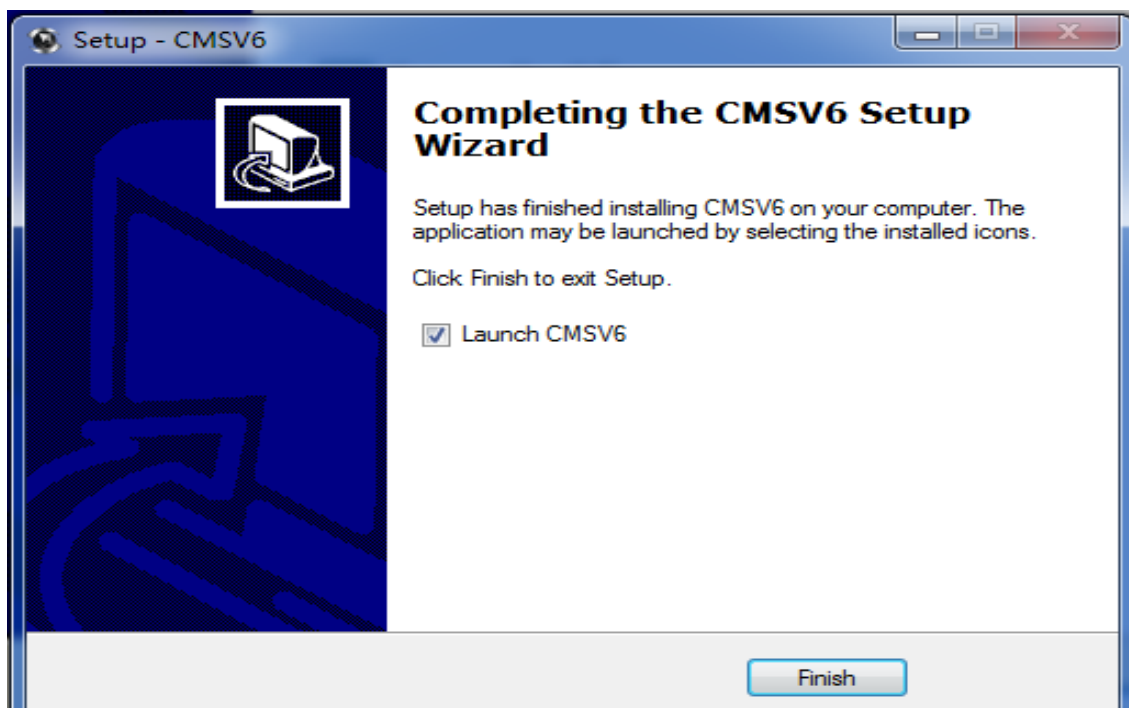
Prepare to install

7. Click “Install” and start to install it.



installing

8. Click “Finish” and launch CMSV6.



Installation successful

**USERNAME: YOUR DEVICE ID/ACCOUNT NUMBER THAT IS LOCATED ON YOUR BLACK BOX**

**PASSWORD: DEFAULT IS SIX ZEROS: 000000**

**SERVER IP ADDRESS: 113.96.131.200**

User: YOUR DEVICE ID

Password: ●●●●●●

Server: 113.96.131.200

Remember password  Login automatically

Login Exit



# 3. CMSV6 Operation Instructions

## 3.1 CMSV6 Introduction

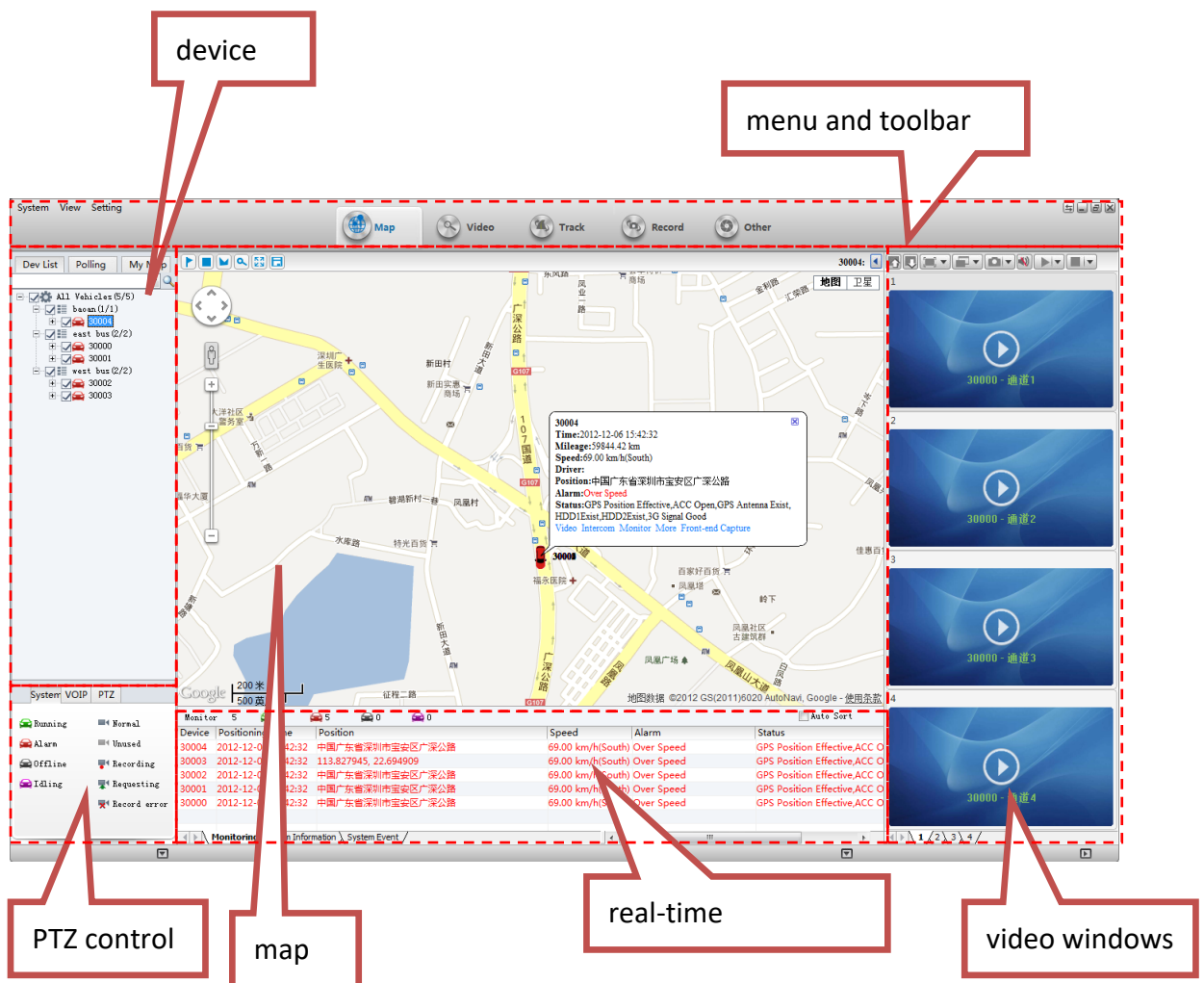
CMSV6 uses many methods including GPS satellite positioning system, the Internet, mobile communications and cloud computing to build a remote monitoring platform for customers. You can manage vehicle/person in different regions by CMSV6.

## 3.2 Main Functions

CMSV6 includes some functions: wireless remote real-time video surveillance, GPS map positioning, vehicle history running track playback, voice intercom, alarm linkage, remote video storage, remote download video, remote video playback, local video storage, local video playback, regional management of the vehicle, the device remotely upgrade, etc.

## 3.3 CMSV6 Main Interface

CMSV6 main interface includes these: tool-bar, device list, map window, video windows, information display windows(vehicle running information、real-time alarm information、system events),PTZ controller less.



CMSV6 main interface

## Function Introduction:

Toolbar: in the top of the window, it includes some buttons: Map, Video, Track, Record, Other, etc.

Map: View on the map the location of the vehicle and other information

Device List: The list information of the vehicle

Video Polling List: CMSV6 will switch these custom-channel video within the specified time.

My Map: Point, surface, a recording of the area marked by the user on the map

System: The overall situation of the vehicles and surveillance video

Voice: Voice speaking and listening

PTZ: Rotation angle, focus, aperture, lights, wipers

Vehicle Monitoring: Display the vehicle information, such as longitude, latitude, the driver, the speed, the vehicle state

Alarm Information: Display the contents of the alarm

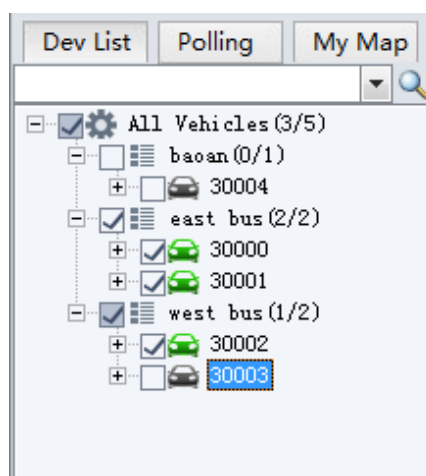
System Events: Recording system events, such as login records

## 3.4 Vehicle Query

### 3.4.1 Device online status

Different color of the node means different status. Green means online, Red means alarm and online. Gray means offline.

When the user logs in, the system automatically gets the vehicle list and updates the state of each vehicle.

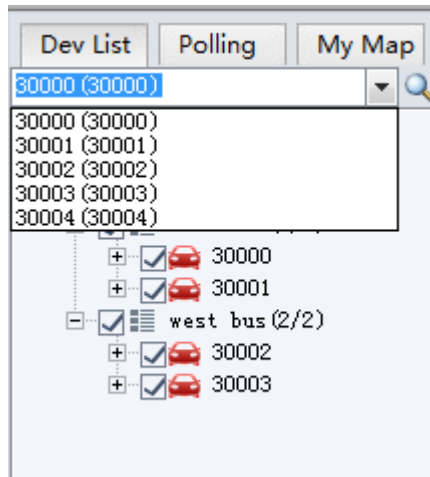


device alarm online status



### 3.4.2 Vehicle Search

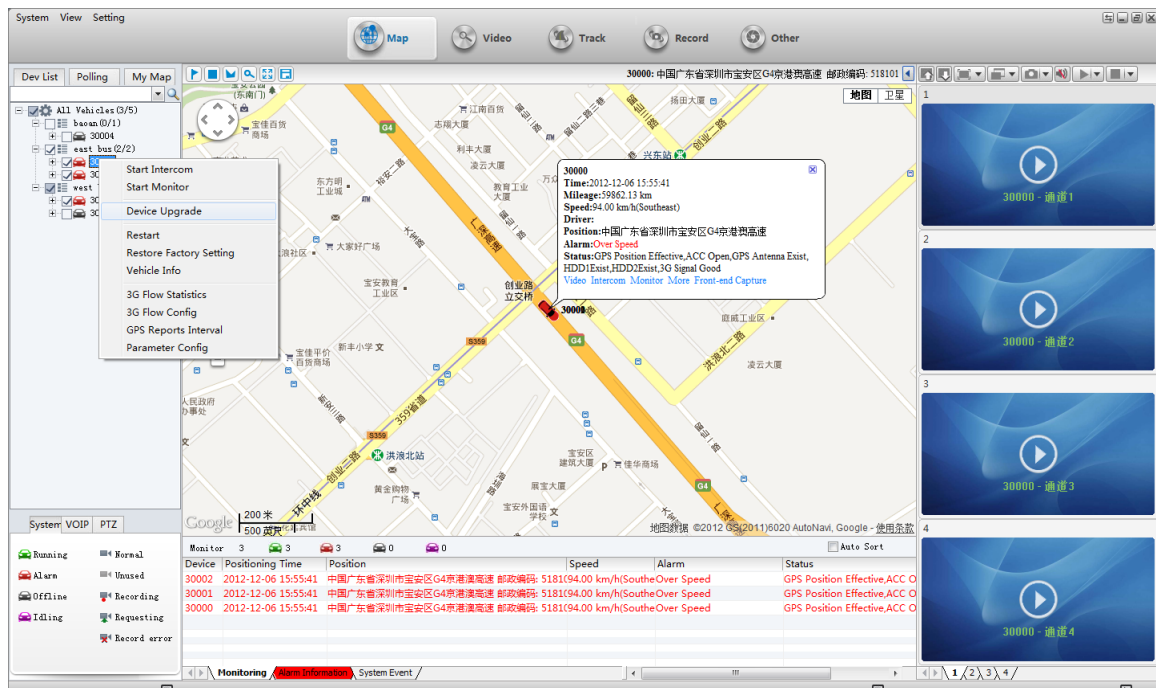
input a key word of vehicle name in the edit box. It will show a list. Select a vehicle in the list and press Enter to confirm it. The color of the node of the selected vehicle will be darker.



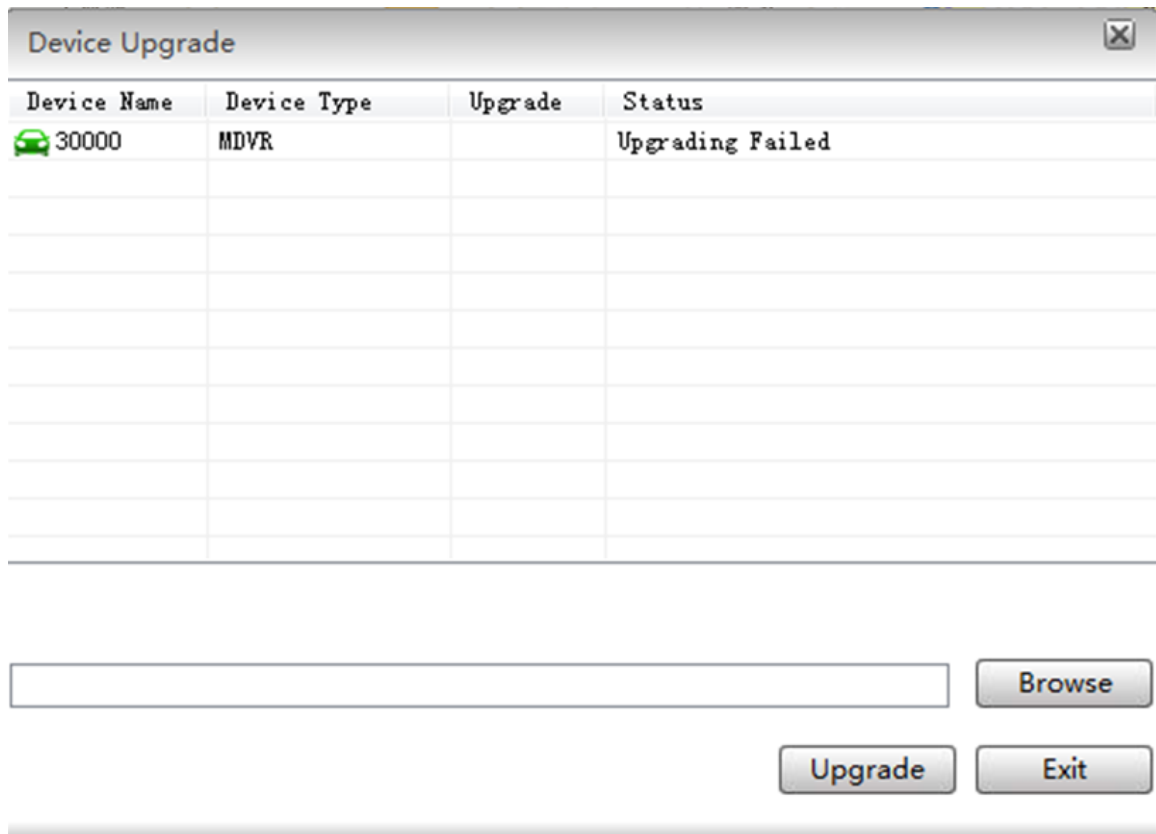
vehicle search

## 3.5 Device System Upgrade

1. Right-click on the vehicle which is selected in the vehicle list, choose “Device Upgrade” on the menu



a pop-up dialog as shown below: “device upgrade” on the menu



device upgrade dialog

2. Click on “Browse”, then select a “. up” file.
3. Right-click on a vehicle in this list, you can select “Delete “to delete a vehicle or select “Clear “to clear all vehicles.

To add a vehicle, you can drag a vehicle from the vehicle list to this list.

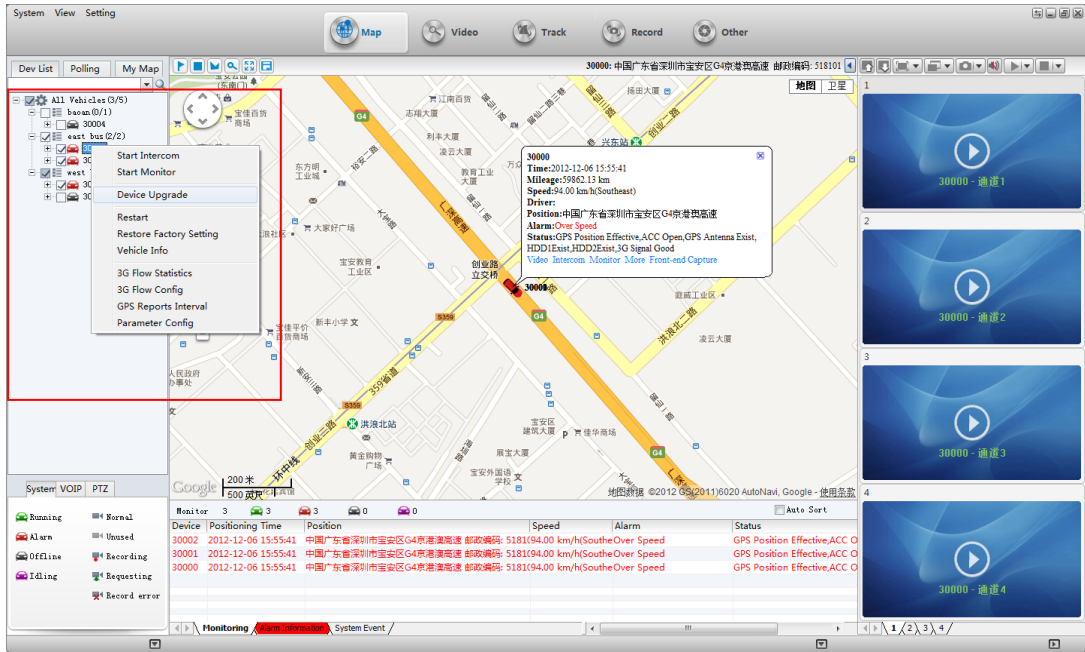
4. Click on “Upgrade” to begin the Upgrade.

### 3.6 Vehicle Remote Control

#### 3.6.1 Vehicle Right-click Menu

CMSV6 Can remotely reboot equipment, recovery equipment factory settings ,view vehicle information, view vehicle configuration parameters and 3G traffic statistics and 3G flow configuration, modify GPS reporting interval, etc.

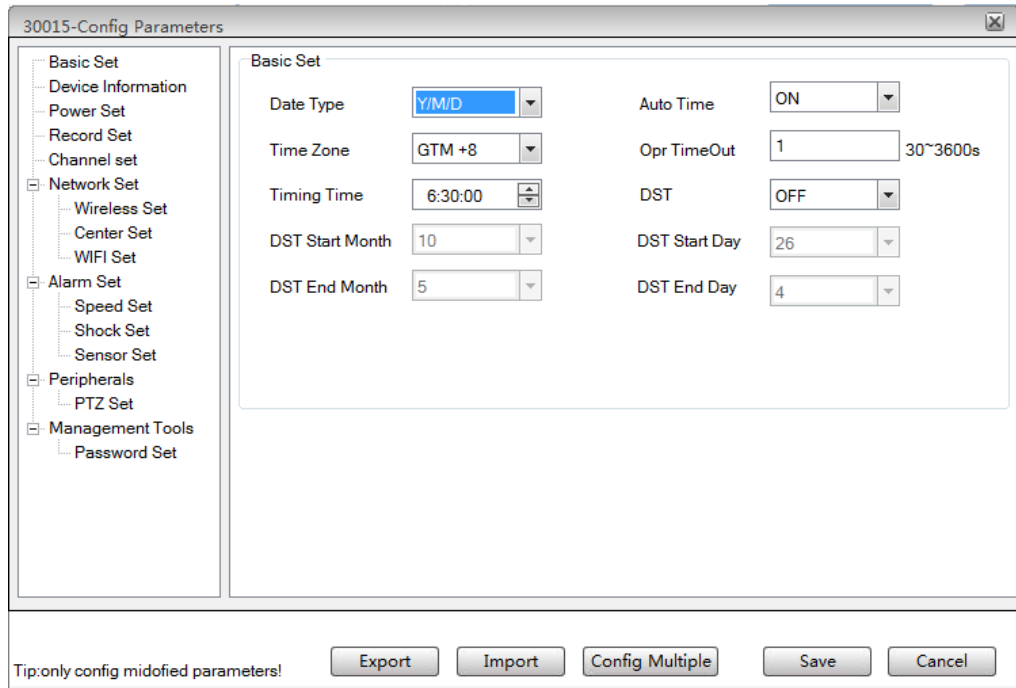
Right-click on the vehicle list, the menu that appears as shown below.



vehicle right-click menu

### 3.6.2 Device config parameters

1. Select a vehicle, right-click, select “Parameter Config” on the menu.
2. The selected vehicle parameters can be seen in the form of pop-up configuration information



basic settings

**Date Type:** Select the device's date output type, There are three types:  
year/month/day ; month/day/year ; day/month/year.

**Time zone:** Set the device time zone.

**Auto Time:** Automatically correct the time, when this option is off , "Time Zone" and "Timing time" is uneditable.

**Timing time:** when "Auto Time" is on, Select your time zone automatically when the system reaches the set point in time by the output of the GPS correction equipment time.

**Opr TimeOut:** set the operation timeout value. When the actual operating time is more than this value, system will stop current operating.

**DST:** Daylight Saving Time, you can set it on or off.

**DST Start Day /DST End Day :** Set DST date range.

**Export:** export these parameters information to a .conf file.

**Import:** import parameters from a .conf file

**Config Multiple:** Click on " Config Multiple", Configure these parameters into a plurality of devices.

### 3.6.3 3G Flow Config

**3G Flow Config:** select a vehicle in the vehicle list ,right-click,select "3G Flow Config"

3G Flow Config-30000

GPRS/3G Use State

Today Used 0.00 Megabytes

Surplus This Month 0.00 Megabytes

distance Day Of 26 Day

3G Flow Config

Open flow Monitor Close

Day Of Reckoning 0 Th

Set monthly limit 0 Megaby

Th Flow Limit 0 Megaby

This Month Used 0.00 Megab

Flow remind

Open day flow remind

Day flow remind 0 %

Open month flow remind

Month flow remind 0 %

Obtain device 3G information successfully!

Save Refresh Exit

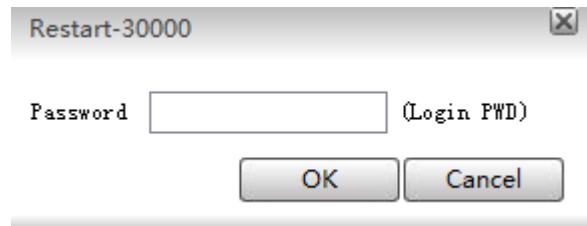
## Flow config

**Clear Statistic Data:** clear all data, reset 3G flow config

**Data Correction:** To correct this month 3g flow.

### 3.6.4 Reboot Device

1. Select a vehicle, right-click, select "Restart" on the menu.



restart device

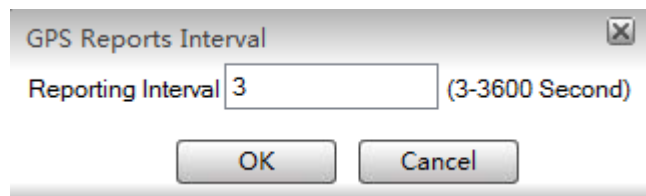
user: the device user name.

password: the device password.

### 3.6.5 GPS Reports Interval

**Set GPS reports interval:**

1. select a vehicle, right-click, select "GPS Reports Interval":



GPS reports interval

PS: The more frequent the larger the load on the server.

## 3.7 Video Preview

**Functions:**

**Video Monitoring:** open the real-time video, play the sound .Sound and video are synchronized .

**Real-time Record:** You can save the video into a record file in local disk.

**notes:**

Make sure the device is online.

Make sure the camera is fixed..

### Toolbar in top of video form



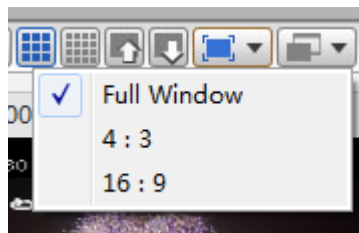
**video window mode:** 1,4,6,8,9,16 subform(s):



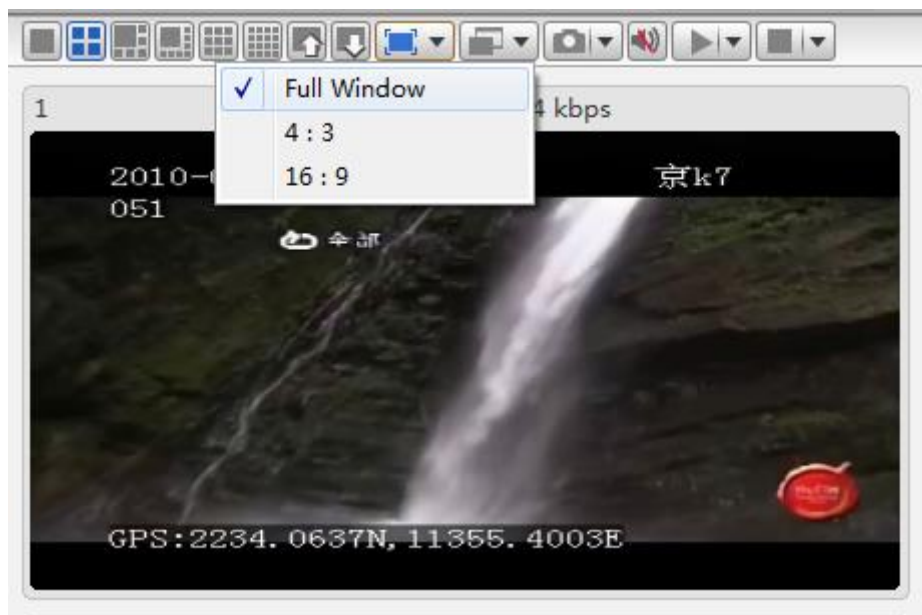
**video window pageup/page down:**



**video screen display mode:** 1-full video window,2- 16: 9,3- 4: 3.



**full video window effect:**



**16: 9:** Width height ratio is 16: 9



**4: 3:** Width height ratio is 4: 3



**Choice of video effects:**

**Real Good:** Priority real-time performance

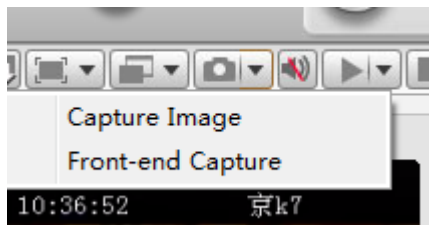
**Fluent Good:** Priority its Fluency



**Capture Image:** Capture a picture from CMSV6

**Front-end Capture:** Capture a picture from the device and upload to CMSV6 by server

If the SD card or hard drive (memory device) is not installed on the device, it will not capture success



**Sound:**

**Close Sound,Open Sound**



**Open Video**

**Open Video:** Open the current focus video window video

**Open All Video:** open all windows video



**Stop Video**

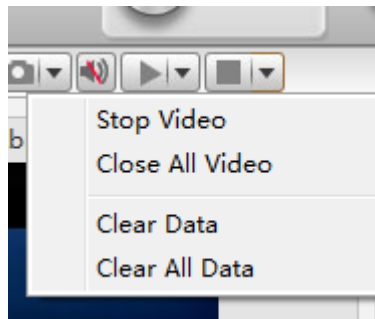
**Stop Video:** Stop the current focus window video



**Stop All Video:** stop all video

**Clear Data:** Clear current video window's channel information.

**Clear All Data:** Clear all video windows'channel information.



### 3.7 Video Monitor

login on CMSV6, you can only see that you have permission to vehicles.

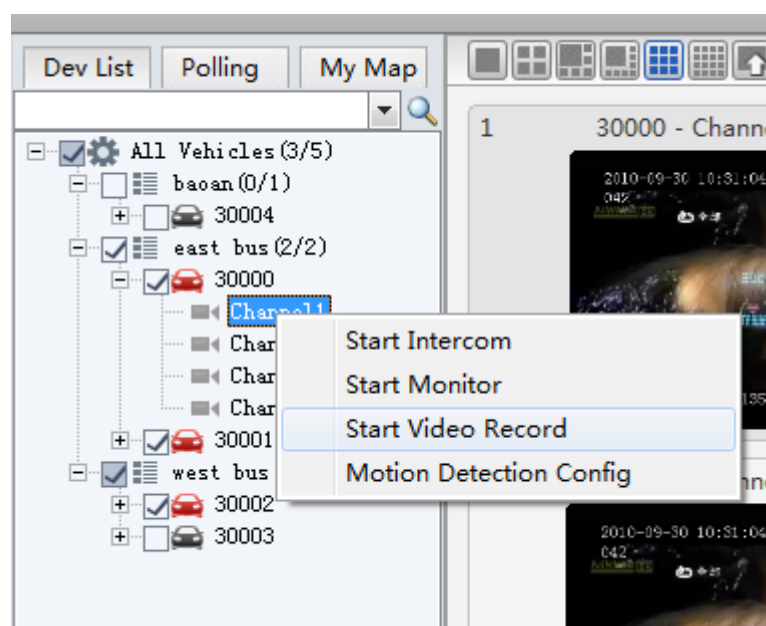
#### 1. Video Preview On Vehicle Channel

To preview a channel of a vehicle, you can drag the channel node to a video window,

or double-click on the channel node .

#### 3.7.1 Real-time Record

1. select a vehicle in the vehicle list, right-click , select "Start Video Record" to record the real-time video.



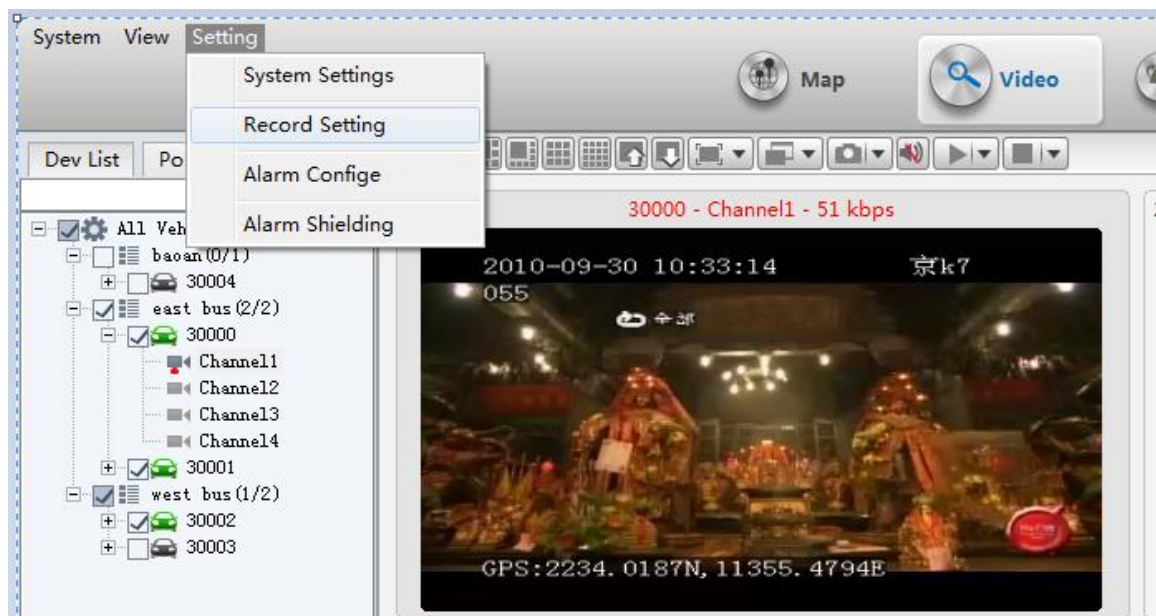
record on a channel

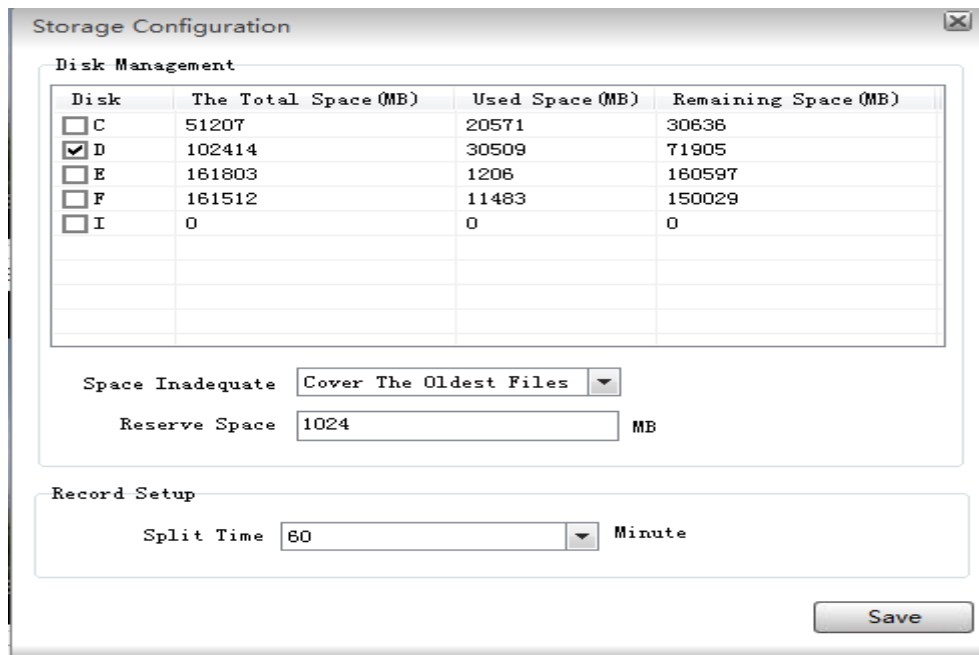
2. The icon of the channel node will be changed when it start to record.



recording

3. Video storage location on the local disk, can be set by "video settings" in the "Settings" in the menu bar of the main interface ( The video files will be stored in the folder named gStorage ). as shown below:





record storage settings

Disk Management: show all disk total space, free space, used space.

Reserved Space: minimize is 1024MB.

Disk Space Not Enough: you can set it Stop Record or Cover The Oldest File when the free space is less than Reserved Space.

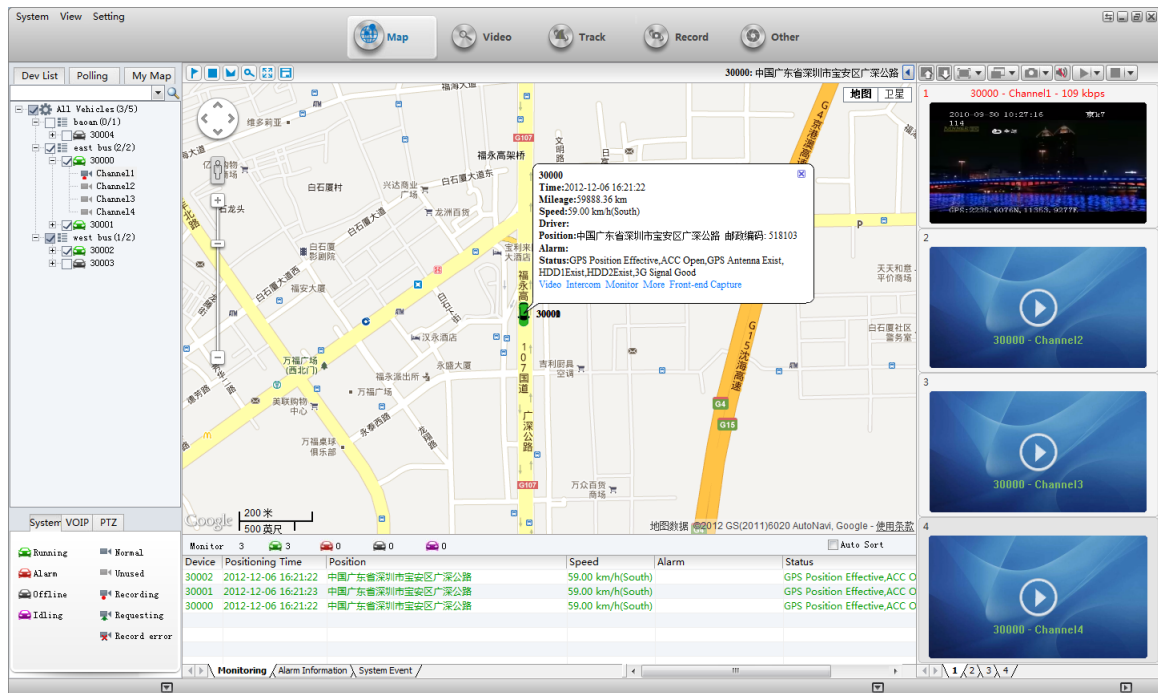
Sectional Time: the record file total time span ( 15/30/45/60 (minutes) ).

### 3.8 Vehicle Monitor Operation

Vehicle location will be shown on map.

#### 3.8.1 Real-time Monitor

1. Check the vehicle in vehicle list and the vehicle you checked will be shown as an vehicle icon on map. Uncheck it to cancel.
2. Vehicle run-time information will be shown in the bottom of main interface. The information includes vehicle name, GPS time, online status, longitude and latitude.
- 3 · The vehicle information will be shown in a tip form on map in the same time: vehicle icon, vehicle name, speed, date & time

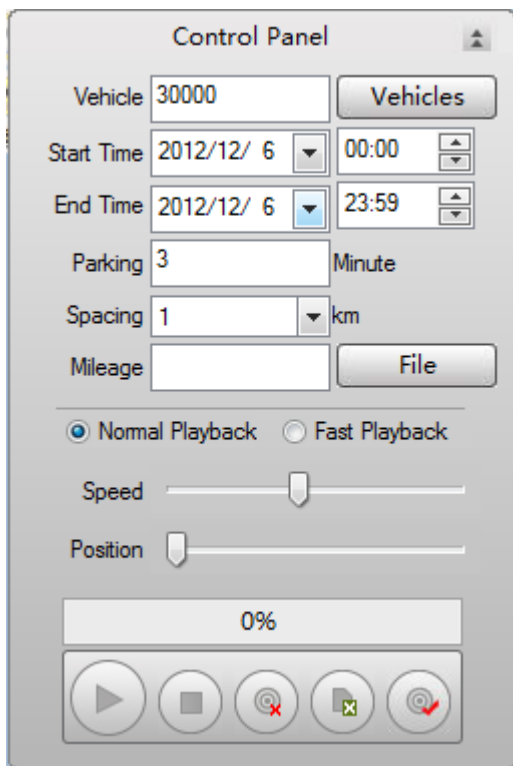


map

**Zoom:** Click “+” to Zoom In, Click “-” to Zoom Out.

**Map/Satellite:** Change the map mode to normal map or satellite

map. **Center Vehicle:** Make the vehicle in the center



### Search track

## 2. Track Playback


It will be played automatically default after search successfully. You can click the Stop button to Stop and Click Play button to Play it again.

Number	Time	Speed	Real Mileage/ODO	Position	Description	Alarm	Status
18	2012-12-06 12:28:50	62.00 km/h(South)	145.02/59635.96 km	113.836263, 22.727119		Over Speed	GPS Position Effective,ACC Open,GPS Antenni
17	2012-12-06 12:27:50	73.00 km/h(South)	143.94/59634.87 km	113.832242, 22.718119		Over Speed	GPS Position Effective,ACC Open,GPS Antenni
16	2012-12-06 12:26:50	66.00 km/h(South)	142.79/59633.73 km	113.828531, 22.708536		Over Speed	GPS Position Effective,ACC Open,GPS Antenni
15	2012-12-06 12:25:50	75.00 km/h(South)	141.74/59632.67 km	113.827311, 22.699149		Over Speed	GPS Position Effective,ACC Open,GPS Antenni
14	2012-12-06 12:24:50	73.00 km/h(South)	140.57/59631.50 km	113.826692, 22.688940		Over Speed	GPS Position Effective,ACC Open,GPS Antenni
13	2012-12-06 12:24:00	75.00 km/h(South)	139.45/59630.39 km	113.823567, 22.679573		Over Speed	GPS Position Effective,ACC Open,GPS Antenni
12	2012-12-06 12:22:50	70.00 km/h(South)	138.20/59629.22 km	113.823649, 22.669099		Over Speed	GPS Position Effective,ACC Open,GPS Antenni
11	2012-12-06 12:22:00	80.00 km/h(South)	137.22/59628.15 km	113.822314, 22.659643		Over Speed	GPS Position Effective,ACC Open,GPS Antenni
10	2012-12-06 12:21:00	56.00 km/h(South)	136.15/59627.08 km	113.825048, 22.651037			GPS Position Effective,ACC Open,GPS Antenni
9	2012-12-06 12:19:20	33.00 km/h(East)	135.13/59626.07 km	113.829752, 22.650101			GPS Position Effective,ACC Open,GPS Antenni
8	2012-12-06 12:18:10	97.00 km/h(South)	133.90/59624.84 km	113.837207, 22.641984		Over Speed	GPS Position Effective,ACC Open,GPS Antenni
7	2012-12-06 12:17:30	92.00 km/h(South)	132.82/59623.75 km	113.843603, 22.634200		Over Speed	GPS Position Effective,ACC Open,GPS Antenni


### Track Playback

**Play:** Play the track ;

**Pause:** Pause the playing track ;

**Delete:**  delete track and the vehicle icon on the map

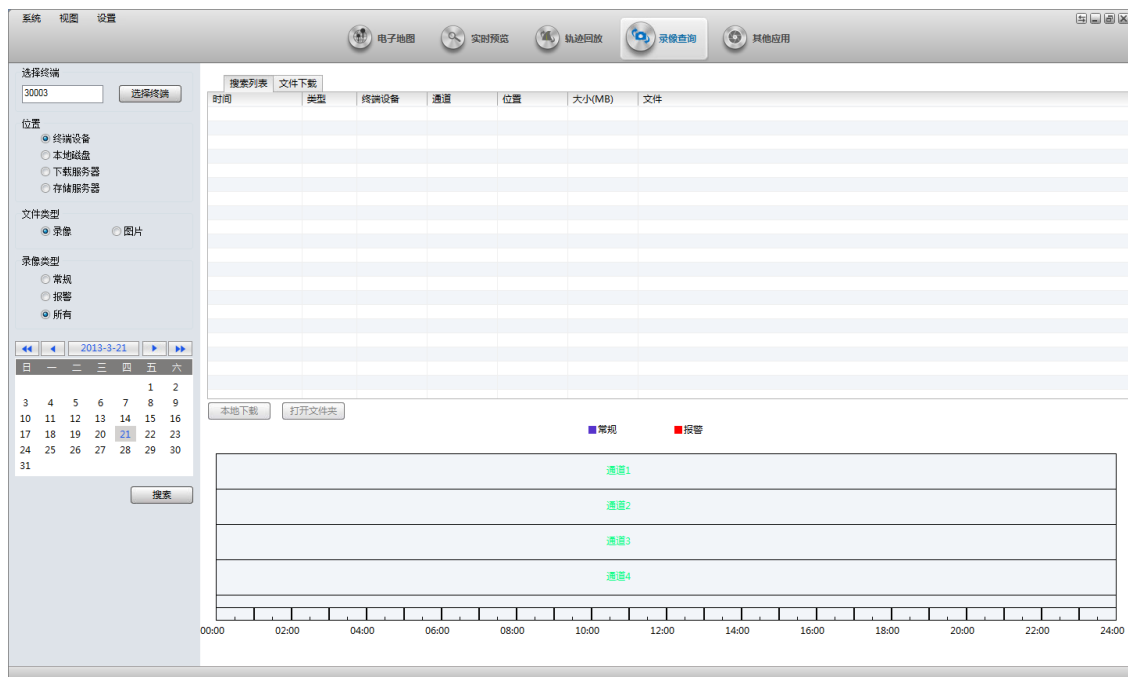
**Export:**  export all the GPS data of the track into an excel file

**Save Track:**  save the track to My Map.

### 3.10.2 Record Search



Click on "Record" in the toolbar, change interface to Record Search and Playback Window. In this windows, you must set the conditions for searching , then Click on the "Search" button to search. It will show the list.



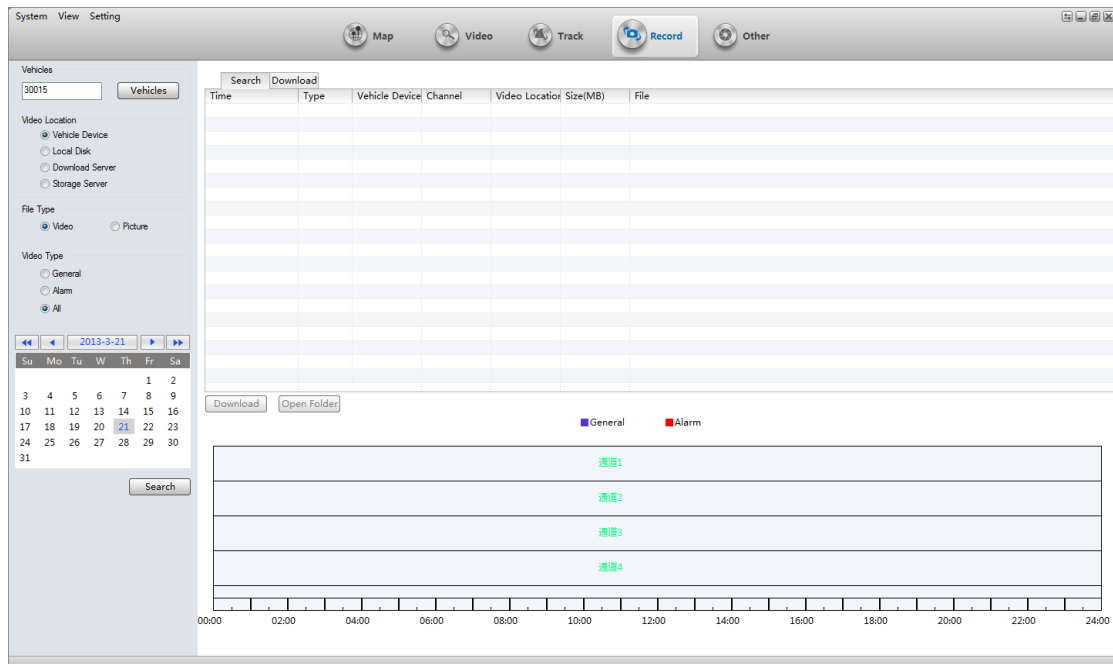
Record Search

**Record Type:** Three Types: Normal, Alarm, All ;

**Search Time:** Select a date of the record.

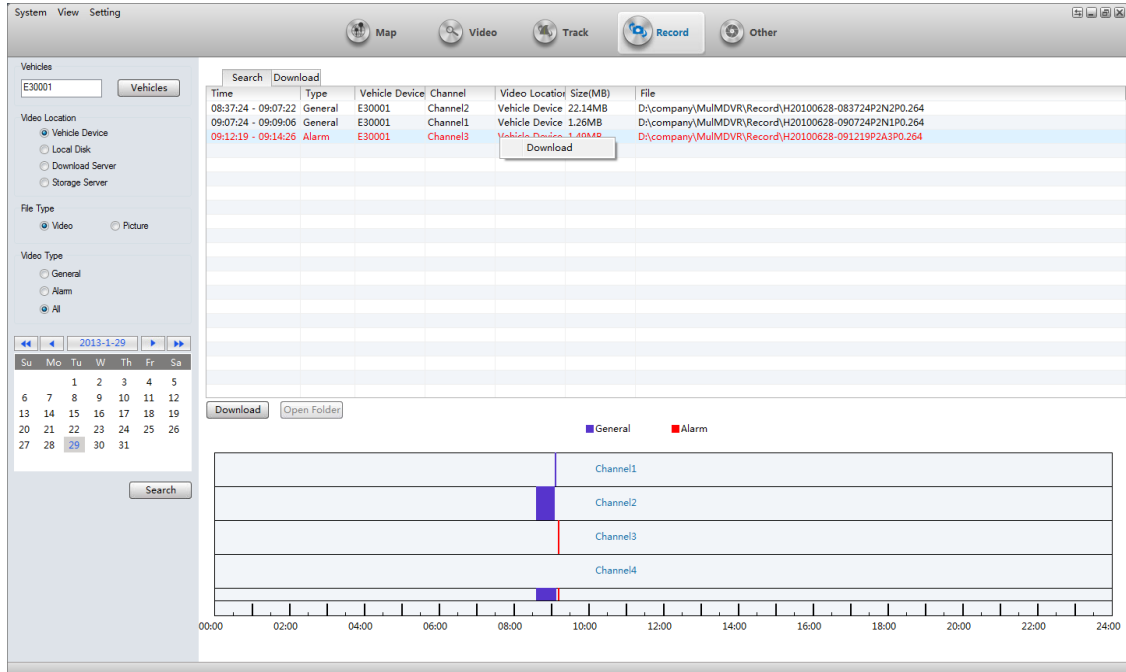
### 3.10.3 Record File Download

1. Click “Search” button to search. It will show the result list. You can see the records. As blow, the red record means it is an alarm record.



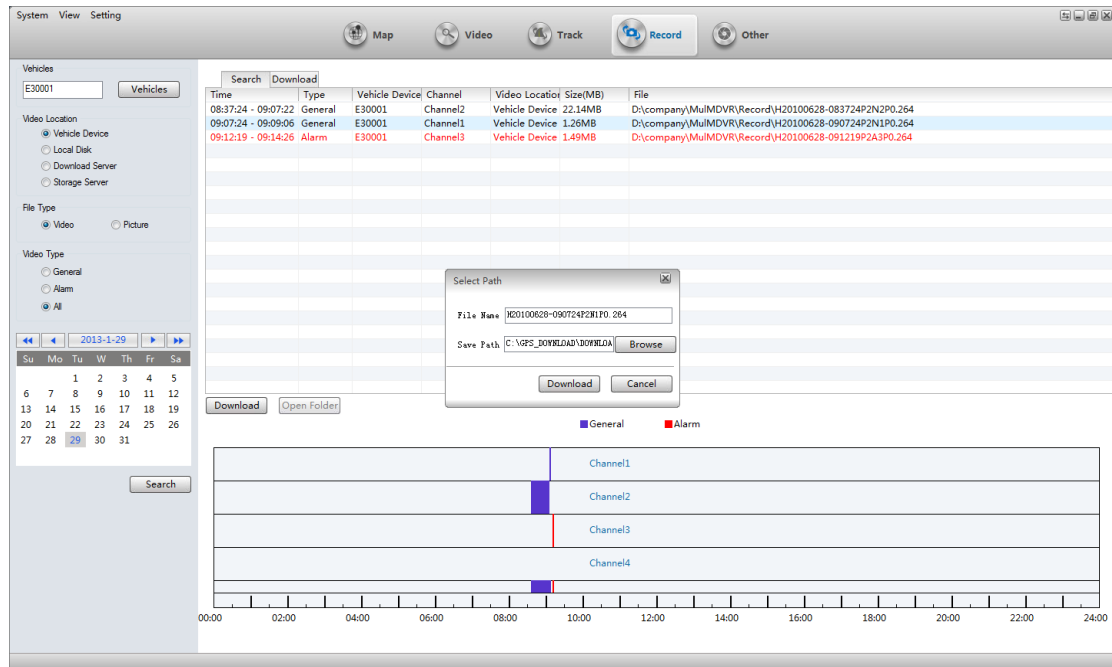
Record List

2. select a record ( or press SHIFT or CTRL to select mutil records ), then click on “Download” button( or Click “Download” on the right-click-menu) to download it.



### Download record files

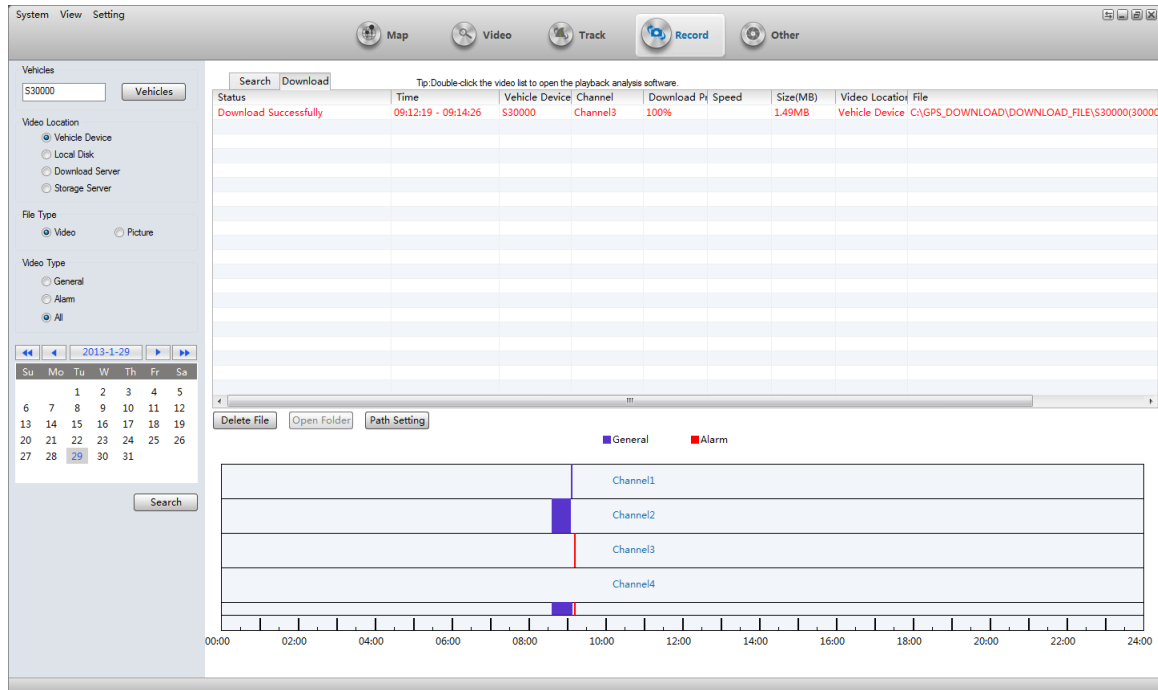
3. In “File Download”panel, you can see these information: file download status, storage path,download progress, file size, create time, vehicle name, channel name, file source, etc.



### Select path

4. When file download finished, you will see the result.





information about download

5. If the file is not completely downloaded, you can click “continue to download” on the right-click-menu to continue to download. And you can play it .

### 3.11 Alarm And Events

#### 3.11.1 Alarm Information

1. in the bottom of main interface, you can see the alarm information if any alarm occurs.

Vehicle	Time	Type	Video Location	Content
30001	2012-12-06 16:40:37	Vibration Alarm Start	113.828759, 22.709578	
30000	2012-12-06 16:40:37	Vibration Alarm Start	113.828759, 22.709578	
30002	2012-12-06 16:40:37	Vibration Alarm Start	113.828759, 22.709578	
30001	2012-12-06 16:40:47	Illegal Door Alarm Start	113.828417, 22.707938	
30000	2012-12-06 16:40:47	Illegal Door Alarm Start	113.828417, 22.707938	
30002	2012-12-06 16:40:47	Illegal Door Alarm Start	113.828417, 22.707938	

#### Alarm Information

black: no need to be processed ;

red: need to process ;

blue: processed.

2. The “Alarm Info”Tab button will be red if any alarm occurs.

Device	Positioning Time	Position	Speed	Alarm	Status
30002	2012-12-06 17:04:45	中国广东省深圳市南山区北环南海立交南海大道北环大道	39.00 km/h(East)		GPS Position Effective,ACC O
30001	2012-12-06 17:04:45	113.930794, 22.554980	39.00 km/h(East)		GPS Position Effective,ACC O
30000	2012-12-06 17:04:45	113.930794, 22.554980	39.00 km/h(East)		GPS Position Effective,ACC O

Alarm Occurs

### 3.11.2 System Events

Click on “System Events” tab button and change to System Events Information Panel.

Time	Content
2012-12-06 16:46:13	30000,Restart Successfully
2012-12-06 16:43:26	30001,Restore Factory Failure
2012-12-06 16:43:00	30000,Restart Successfully
2012-12-06 16:42:07	Successfully login manage server

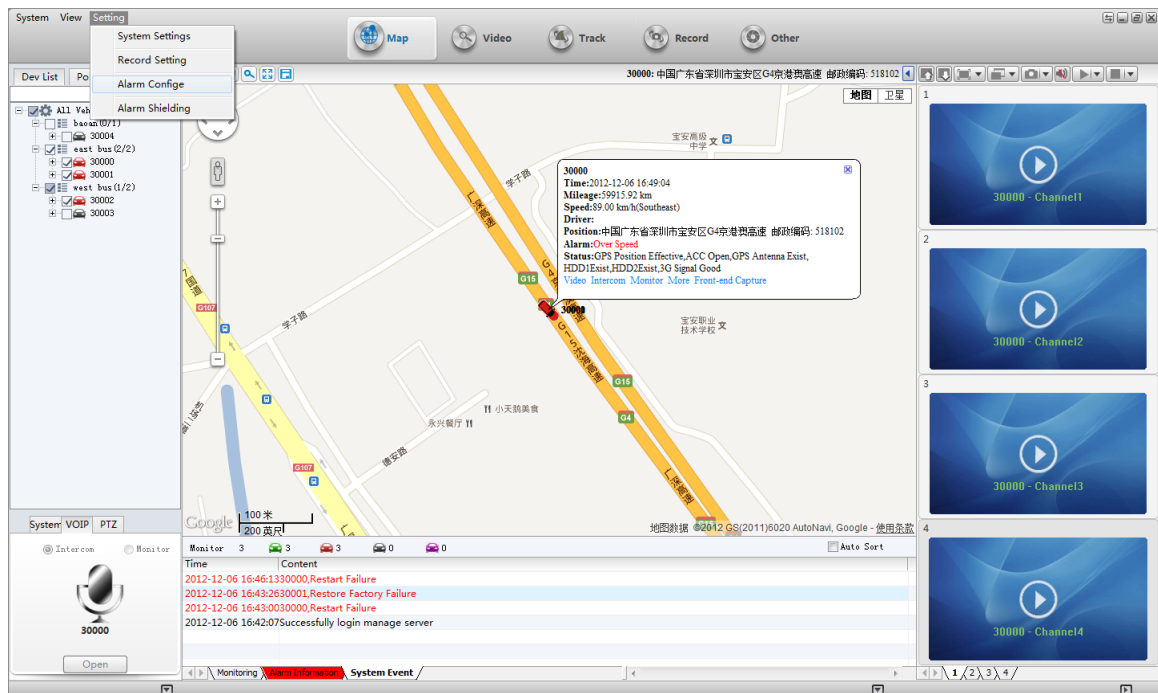
System Events

**System Events includes:** the status of device and server connection, reboot device operation, device power on/off \ disconnect/reconnect oil line, Recovery equipment factory settings, GPS report interval changed, etc.

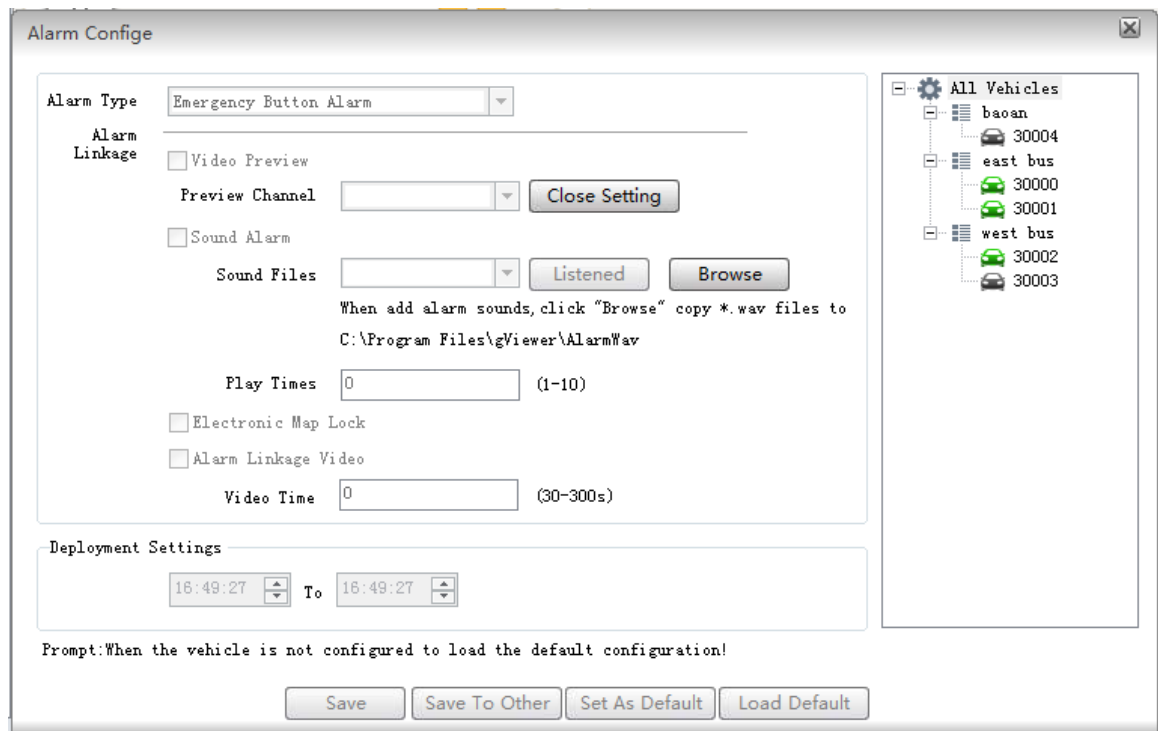
### 3.12 Alarm Linkage Configure

The user can set one or more of the type of alarm, if these type of alarm occur, a linkage dialog will show out or other things will notify the user.

1. Click on the menu item “Alarm Config” of the menu “Settings” in the menu bar in main interface:



select the menu item "Alarm Config"



Alarm Config

Firstly, select a vehicle in the right vehicle list ,otherwise,it is uneditable.

Alarm Type: you must select a type.

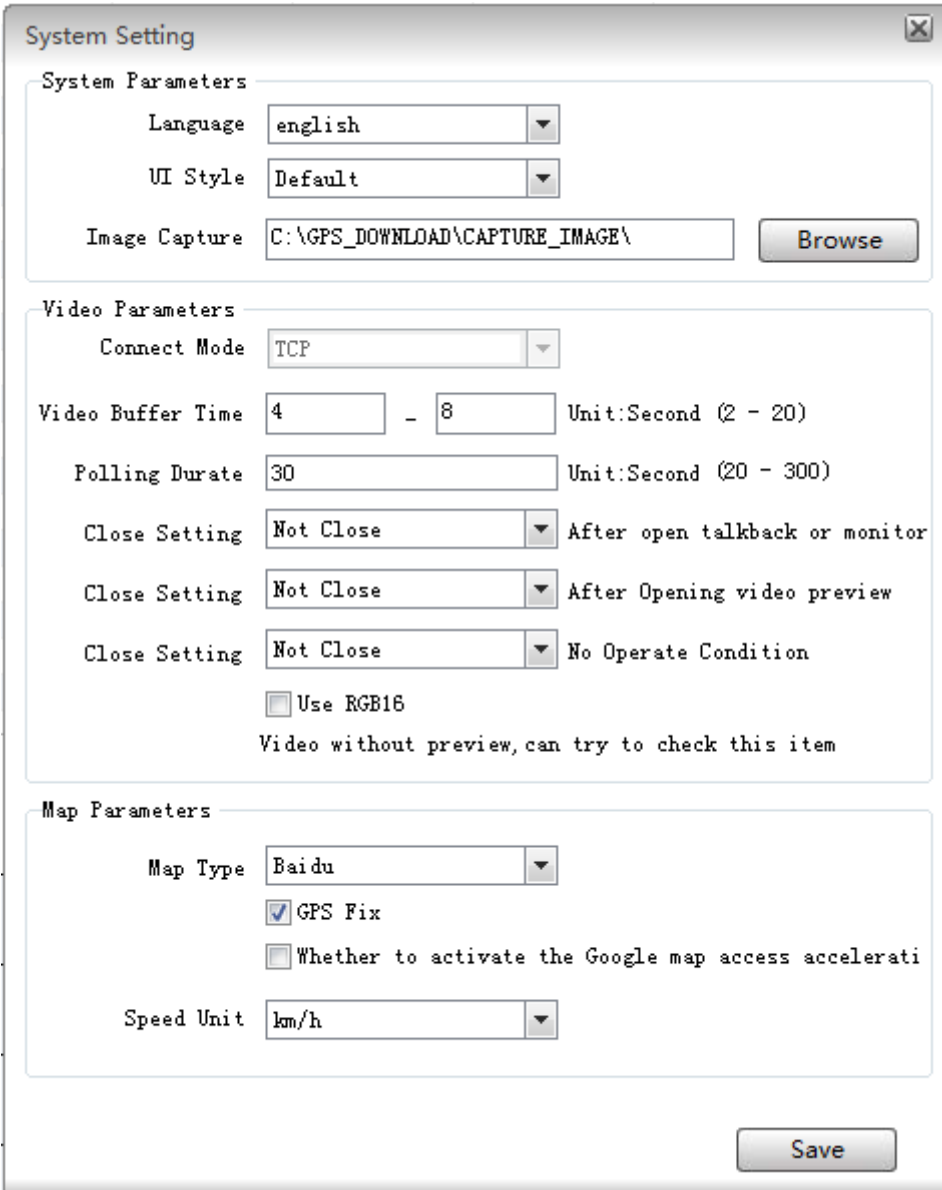
**Light:**  Light on or off.

**Wiper:**  Open or Close wiper.

**Preset Point:** Call/Set/Delete

### 3.14 System Setting

Click the menu item “System Settings”( Settings -> System Settings) in the menu of main interface.



**System Setting**

System Parameters

Language english

UI Style Default

Image Capture C:\GPS\_DOWNLOAD\CAPTURE\_IMAGE\ **Browse**

Video Parameters

Connect Mode TCP

Video Buffer Time 4 - 8 Unit:Second (2 - 20)

Polling Durate 30 Unit:Second (20 - 300)

Close Setting Not Close After open talkback or monitor

Close Setting Not Close After Opening video preview

Close Setting Not Close No Operate Condition

Use RGB16

Video without preview, can try to check this item

Map Parameters

Map Type Baidu

GPS Fix

Whether to activate the Google map access accelerati

Speed Unit km/h

**Save**

System Configure

**Language:** you can choose Chinese or English, save it and reboot CMSV6.

**Connect Mode:** Only TCP in current version.

**Video Buffer Time:** Set video buffer time to make real-time video play smooth.

**Image Capture:** Set the Image storage path.

**GPS Fix:** If one vehicle is offset from road, check this option to fix it.

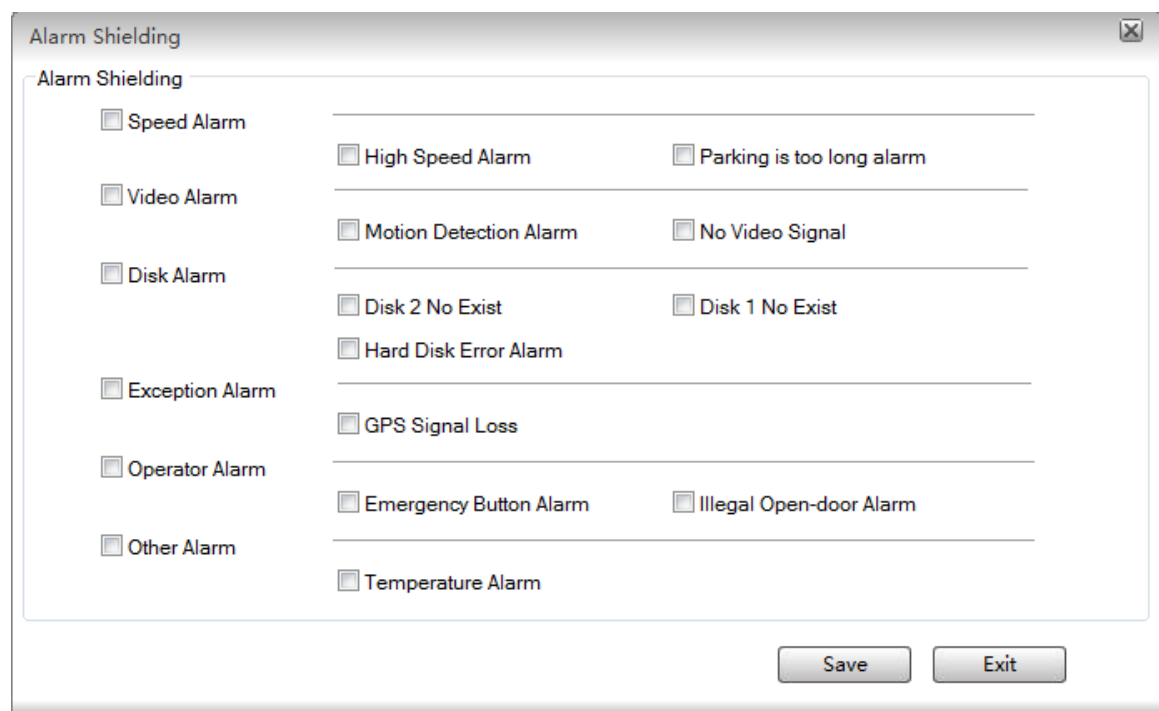
**Speed Unit:** Km/h or mph

**Polling time:** It will show next batch of channel video if the time reaches the value.

**Close Settings:** Automatically stop the video after the video is open or the user dose nothing.

### 3.15 Alarm Shielding

Click the menu item “Alarm Shielding” Of “Settings” in the menu bar.



Alarm Shielding