

1080P Instructional Manual MDVR 4-8Cameras DVR System

Mobile Digital Video Recorder Installation Tips

- **Camera Mounting**

- **Camera Placement**

- The video cameras that come with the mobile DVR have a very wide field of view. The small “bullet” cameras that you probably used for your rear-facing cameras will show you two lanes of traffic at the rear of your trailer when you line up one side of the view with the side of your truck cab. At night, you will see about half of your trailer length until another vehicle comes up on you - the IR night vision is better than most cameras their size.
- The larger camera that you probably used for your “dash-cam” will let you see about a 170-degree arc in front of your truck - at a distance of one truck length, you will see the lanes on either side of you. You might consider placing this camera outside, though (it's waterproof), because the IR is very strong at night in the dark and will reflect off of the inside of your windshield at night - effectively blinding the camera with it's own glare.

- **Camera Extension Cable Connector Placement**

- You'll want to either run your camera cables so that the extension cable connector is inside the truck, or use some good-quality dielectric grease when you screw them together to keep out any slight water seepage.

- **Mobile DVR Placement**

- While your first thought will probably be to mount the DVR out of sight - maybe behind the seat - you will probably want it somewhat visible so that you can use the infrared remote control without having to crook your arm over the seat. Mount it somewhere where it has a clear view of you in the driver's seat - maybe under the dash, or some other visible spot.

- **Monitor Placement**

- At first, I mounted my monitor below the upper storage tray, above the windshield; I quickly realized that the light coming in through the windshield put a glare on it and I couldn't see the screen. I ended up mounting it on the dash, just to the right of the instrument panel on my Kenworth T-680. Easily visible while driving, with no glare from outside sunlight.

Mobile Digital Video Recorder Set-Up

The first time you power up the mobile DVR, the monitor will be blank; this is because the unit comes from the factory set for the PAL video mode - you will have to change it, along with other settings, by following these instructions.

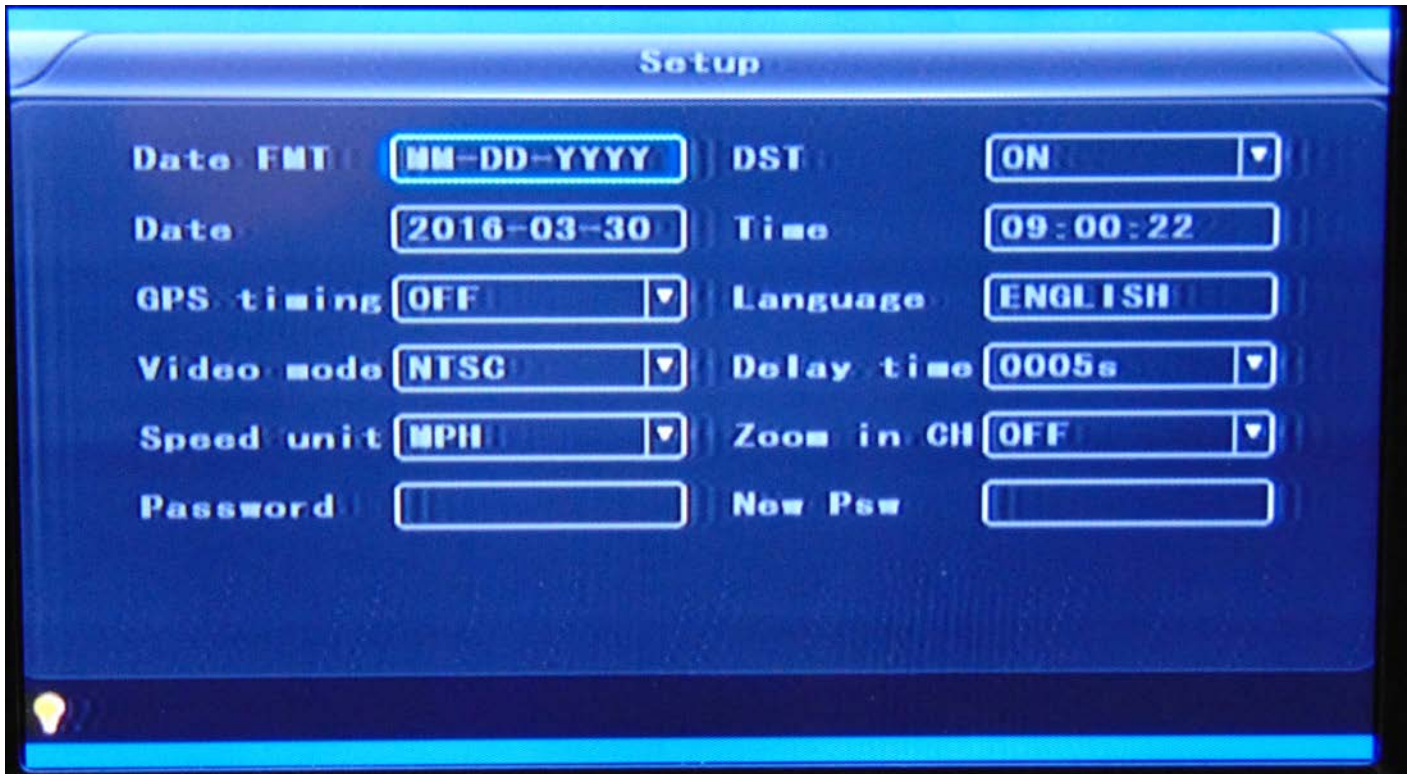
The mobile DVR comes with a remote control that is used to, among other things, log into the unit's setup program. You point the remote at the mobile DVR unit, and press the small, round "Menu" key to bring up the login screen. This will work even with a blank screen.



The User name is already filled in, so you simply press the down arrow on the remote to move to the Password field - the soft keyboard will pop up when you do. You just use the arrow keys on the remote to move around the keyboard, pressing the "Enter" key to select the characters. The default password is "6666" - you can change it in the setup, but I would recommend just leaving it at that; if you ever reset the unit to factory configuration, you'll lose the new password anyway. Once you have entered the password, key over to the "OK" key and select it to bring up the graphical menu. It has six main icons.

On the main menu, select "Setup" to go into the main setup menu, which also has six icons.

On the main setup menu, select "System" to get to this screen:



When you get to it, the fields will look different - it will be in the factory-default condition. You can change each field by using the arrow keys to move to it - which will highlight the border of the field - and then press "Enter" to edit the field.

Change these fields so that they match what is shown in the picture above - except for the date, time, and DST fields which will match your own needs.

Once you are finished setting these fields, you can press the small, round "Menu" key once to back out to the main setup menu. Next, we will select the "Other" menu icon, which will move you into the following screen:

DVR Player Viewer & Conversion Software

Set-Up And Configuration

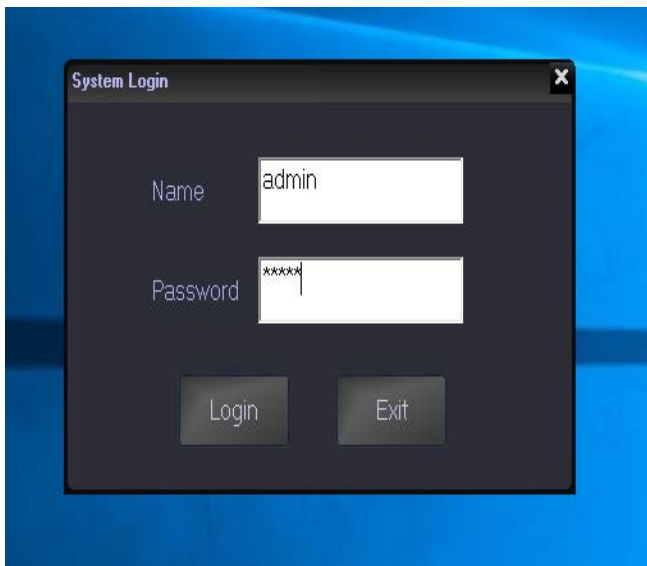
Installation

There was a small CD-ROM disk in the box with your mobile DVR – place it into the CD-ROM/DVD-ROM drive of your Windows computer, and open it with File Manager.

You will see several files and two directories on the disk – we are only interested in the file named “**DVR_Player setup V2.33.02 En.exe**”. Right click on this file, and in the menu that pops up, select “Run as Administrator” to begin the installation program. Follow the prompts through the installation.

Once it is done installing, click on your “Start” menu and find “**DVR_Player**”; again, right click on it and select “Run as Administrator” from the pop-up menu to bring up the login screen:

IMPORTANT NOTE: *Before running this program, you MUST remove one of the SD cards from your mobile DVR and insert it into the SD card reader, either the one on your laptop computer or a USB card reader. When you insert the SD card, Windows will complain that the card needs to be formatted – **DO NOT FORMAT THE CARD!** Simply click “Cancel” on any of the Windows dialog windows. Even though Windows does not recognize the SD card, the DVR Player software will automatically read it and load your videos.*



Logging In

This is probably the simplest part of this whole installation – you have to login to use this software.

The Name is “**admin**”, and the Password is also “**admin**”.

Once you have entered these, click on the “**Login**” button to bring up the main window.

Once you have logged in, the program will automatically read the SD card and load a list of your videos into the left-hand pane. You may double-click on any of them to begin playing them. You can also right-click on any of the file names and select “Download” from the context menu to copy the .h264 file to your laptop's hard

drive for later conversion.

Playing Back A Video Saved, Or Downloaded From CMS

You can load and play any video that you copied from your SD cards, or downloaded from the CMS server by simply opening it in the DVR Player software. It operates exactly like any other

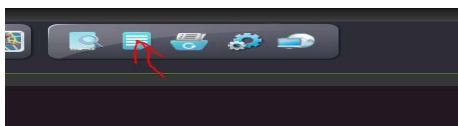
video player software when playing back CMS files. Just like any other video player, you can start, stop, pause, fast forward, fast reverse, etc.



Converting A Saved Or Downloaded CMS Video To AVI Format

The videos you copied from your SD cards or downloaded from the CMS server are encrypted for security, so they need to be converted in order to play them on any other video player software, share on Facebook, upload to YouTube, etc.

The DVD Player software handles this task for you, and produces standard MS-compatible AVI-format video files that can be played on any computer and some mobile phones.



To start the conversion process, simply click on this icon in the menu bar on the top of the window.

This will bring up a date & time selection dialog, where you

can set the start and end times that you want to convert.

Since this player will only open the .H264-format videos downloaded from the CMS server, the selection controls for AVI or .H264 are locked on AVI.

In this dialog, only the time is set-able.

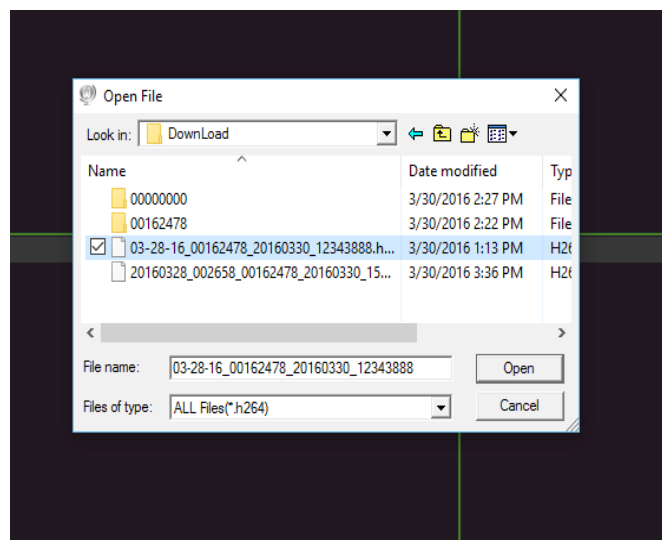
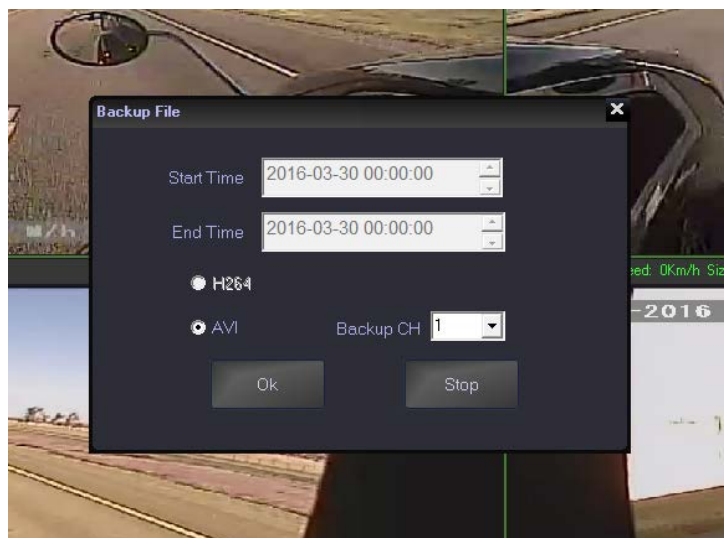
You click on the hour, minute and second fields as needed, and type in the time that you want to start and end at.

You can select any available channel, or you can select all channels using the “Backup CH” control.

Once everything is set, you simply click on the “Ok” button to start.

Once you select the start & end times and the number of channels, you will be asked which .H264 file you want to convert.

Select the file, and click the “Open” button.

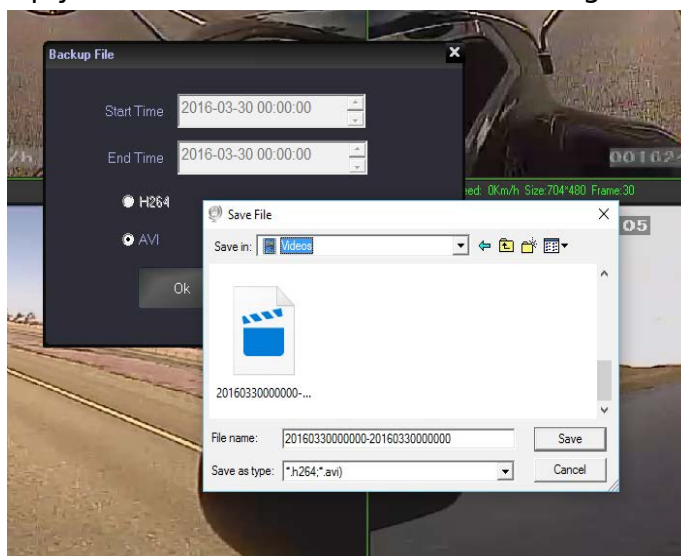


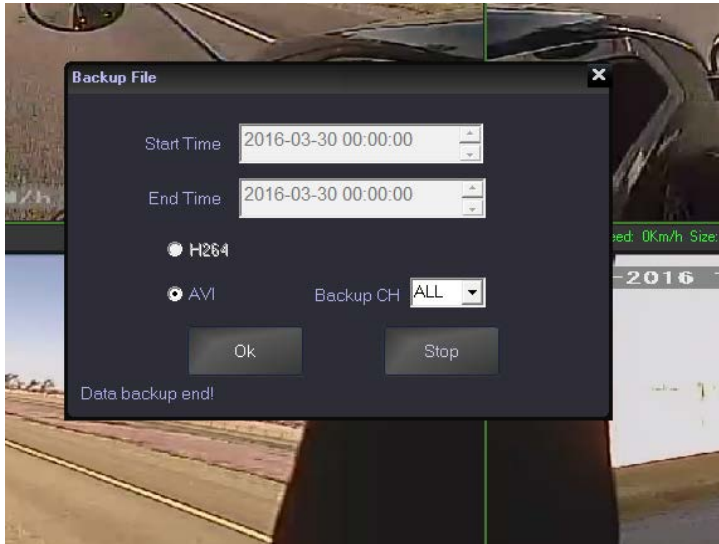
comes up to tell the program where you want to save the AVI file, and you can give it a new name if you don't like the one it suggests.

Then simply click on the “Save” button to start the conversion process.

Once DVR Player has loaded the file you want to convert, it will ask you where you want to save the new AVI file to.

Simply use the Windows “File Save” dialog that





During the conversion, DVR Player will give you a progress report in the lower left corner of the time selection dialog.

When you see "Data backup end!", your AVI file has been created.

You can click the Close button at the top right corner of the dialog window.

After that, you can close the program window if you don't have any more files to convert.

The finished product plays very well in just about any video player that supports AVI files, but I personally prefer the VLC media player.

