

ABOUT US



With the beginnings that date back in the field of security and GSM alarm systems, the company ventured into the development and production of electronic marine equipment that provides a high level of safety and dependability of operation. The **ASTEL MARINE** brand was launched in 2004 and has very soon became one of the leading brand names in marine industry.

www.astel-marine.com



The **ASTEL LIGHTING** brand name was launched in 2009 as the result of very well accepted marine lighting products fitted in luxury yachts. With years of experience in producing high-performance in-hull luminaires, the company gained knowledge and expertise in creating high-quality waterproof luminaire designs in one of the most challenging environments – the sea.

www.astel-lighting.com



PRICE LIST

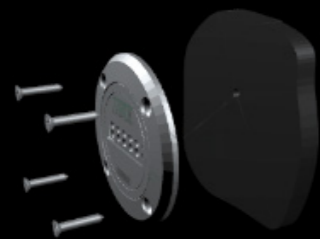
BRAND	MODEL	PRICE
ASTEL MARINE	EQUATOR MSR0640	From \$345.00 USD
	EQUATOR MSR1280	From \$514.00 USD
	EQUATOR MSR36240	From \$802.00 USD
ASTEL LIGHTING	METEOR LSR0640	From \$389.00 USD
	METEOR LSR0640EQ	From \$411.00 USD
	METEOR LSR1280	From \$591.00 USD
	METEOR LSR36240	From \$941.00 USD
	METEOR XP LFR3210	From \$1,705.00 USD
	METEOR XP LFR3215	From \$2,178.00 USD
	LSMN NICHE	From \$98.00 USD
	LCPN NICHE	From \$111.00 USD
	LRMN NICHE	From \$181.00 USD
	LCFN NICHE	From \$240.00 USD
	LLPN NICHE	From \$162.00 USD
	LWMN NICHE	From \$181.00 USD
	LCPNXP32 NICHE	From \$219.00 USD
	LLPNXP32 NICHE	From \$635.00 USD
	LCPN0640EQ NICHE	From \$169.00 USD
	DMX512 Interface LXU01	\$65.00 USD

*Prices exclude Taxes. Design and specifications subject to change without notice.



Underwater Lighting

“We strive for technical perfection in all of our products, and the key directions of our company have always been innovation and distinctiveness. The wide range of our marine and architectural fittings are of the highest possible quality made from carefully selected components and professional solid materials.”



Astel USA Inc.
66 W Flagler Street
Suite 900 - #9102
Miami, FL 33130
USA

Phone: +1 (786) 458-8861
E-mail: info@astel-usa.com

www.astel-usa.com



Color of lighting

W		Cool white
B		Blue
M		RGB multi-color
T		WGB multi-color
MW		RGBW multi-color



EQUATOR MSR0640



EQUATOR MSR1280



EQUATOR MSR36240



METEOR LSR0640



METEOR LSR1280



METEOR LSR36240



METEOR XP LFR3210
METEOR XP LFR3215



METEOR LSR0640EQ



Color of lighting

W		Cool white
WW		Warm white
B		Blue
M		RGB multi-color
WM		WGB multi-color
MW		RGBW multi-color (excl. LSR36240)

Beam angle

Standard
Wide
Narrow (XP only)

Cable length

10 feet
30 feet
50 feet
100 feet

Luminous flux

max. 950 lm (LSR0640 series)
max. 1900 lm (LSR1280 series)
max. 5700 lm (LSR36240 series)
max. 10000/15000 lm (XP series)

Power consumption

max. 10 W (LSR0640 series)
max. 18 W (LSR1280 series)
max. 51.5 W (LSR36240 series)
max. 127 W/120 W (XP series)

Color of lighting

Single Color (White, Blue) or Multi Color (RGB, WGB, RGBW)

Power consumption

max. 10 W max. 18 W max. 51.5 W

Luminous flux

max. 1130 lm (white) max. 2250 lm (white) max. 6800 lm (white)

Dimensions

3.9 x 2.72 x 0.39 inch 4.69 x 3.5 x 0.39 inch 5.47 x 4.29 x 0.39 inch

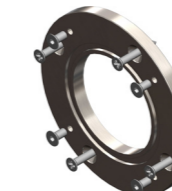
Weight

0.66 lbs 0.88 lbs 1.32 lbs

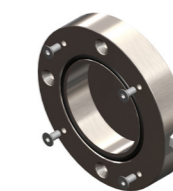
Recommended boat length

Up to 25 ft Up to 40 ft Up to and over 65 ft

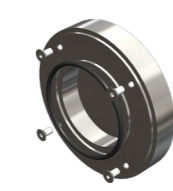
Niche code	Type of niche	Type of pool
LSMN	Surface-Mount Niche	Finished Pool
LRMN	Surface-Mount Right-Angle Niche	Decorative Pool
LWMN	Weld-Mount Niche	Stainless Steel Pool
LCPN	Concrete Pool Niche	Concrete Pool
LCFN	Concrete Pool Niche	Concrete Pool - Aligned Liner/Concrete Pool
LLPN	Liner Pool Niche	



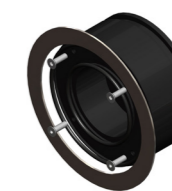
LSMN



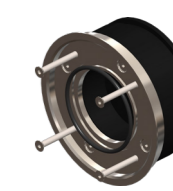
LRMN



LWMN



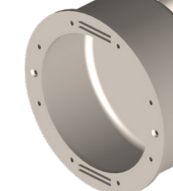
LCPN



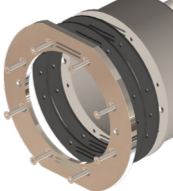
LCFN



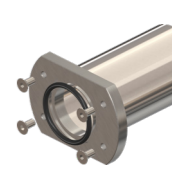
LLPN



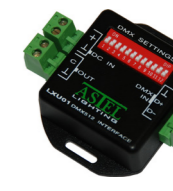
LCPNXP32



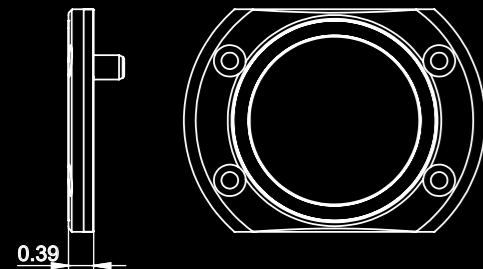
LLPNXP32



LCPN0640EQ



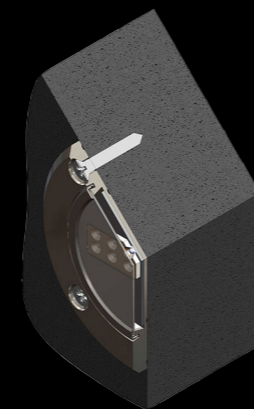
DMX512 Interface LXU01



Ultra-thin surface-mount EQUATOR series of marine underwater LED lights

The EQUATOR series is a compact ultra-thin LED underwater light with built-in driver, our patented design allows surface-mount installation on the stern and both sides of the hull below the waterline.

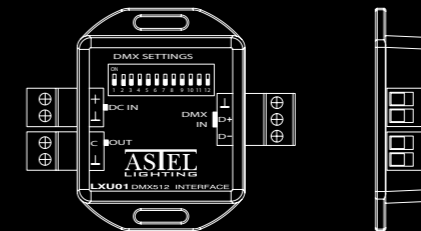
The thickness is only 0.39 inch and to install the EQUATOR the max. diameter of the hole through the hull is 2/5 inch.



The METEOR series of compact ultra-thin UL[®] certified LED underwater pool lights with built-in driver.

The METEOR series of underwater light's main feature is that they can be installed on the flat surface without any surface preparation during construction.

Thanks to the unique ultra thin surface-mount design, our lights can be easily installed on existing finished pools. Four screws and a cable hole require very little construction work.



Change color with the push of a button

EQUATOR and METEOR series allows you to explore the complete rainbow spectrum by using only a simple momentary switch.

Also supports DMX512 network control for advanced users.