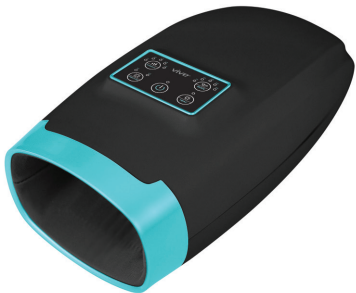


vive®



HAND MASSAGER

Owner's Manual
RHB2027BLK

vivehealth.com

OVERVIEW

We are constantly answering questions and recording helpful videos to make using your Vive Hand Massager as easy as possible. Check out the included link and QR code to help you through the process.



To see all FAQs in one place,
visit vhealth.link/yek

WHAT'S INCLUDED

- Hand Massager
- Finger Massager
- Charging Cable

INSTRUCTIONS

Before using the Hand Massager for the first time, make sure you fully charge the device. On the highest setting, the device can be used for 2 hours and on the lowest setting, the device can be used for 3 hours. The Hand Massager has an automatic timer of 15 minutes.



1. Begin by pressing the power button to turn the device on.
2. Then select a desired mode by clicking the mode button. Press the mode button to toggle through the five modes. Below are the five modes:
 - a. Contains all features of modes 2-5
 - b. Automatic massage
 - c. Massages wrists and palms simultaneously
 - d. Massages wrists
 - e. Massages wrists and palms alternately

3. After selecting a mode, you can adjust the desired intensity by pressing the intensity button. There are five levels of intensity.
4. There are two optional features that can be used during use.
 - a. Vibration
 - i. There are two levels of vibration intensity.
 - b. Heat
 - i. There is one level of heat.

Optional – Using the Finger Massager

The Finger Massager is an included tool to help relieve sore fingers. You can use the two rollers by inserting your finger between the rollers and moving the Massager up and down your finger. On the other side is a cold roller ball that can be used on your fingers or hands.

CARE AND MAINTENANCE

- Keep away from direct sunlight.
- Do not use with wet hands.
- Clean the plastic surface with a clean, dry cloth.
- Do not use harsh chemicals or cleaners.

TROUBLESHOOTING

Issue	Possible Cause	Solution
The device will not turn on	The device is not charged	Recharge the device for a full 4 hours before attempting to turn the device on
The device makes a faint sound while in use	Sound of air pump (buzzing)	These are normal operating sounds
	Sound of solenoid valve (ticking)	

SPECIFICATIONS

- Voltage: DC 3.7V
- Power: 5W
- Automatic timer: 15 minutes
- Unit weight: 2.43 lbs. (1.1 kgs.)

GOT MORE QUESTIONS?

Check out our list of Frequently Asked Questions at vhealth.link/yek for helpful answers.



And if that doesn't answer your question, our customer service team would love to help! Feel free to connect with them by phone, e-mail, or chat on our website.



service@vivehealth.com



1-800-487-3808



vivehealth.com

Distributed by

vive
health

8955 Fontana Del Sol Way
Naples, FL 34109
Made in China