



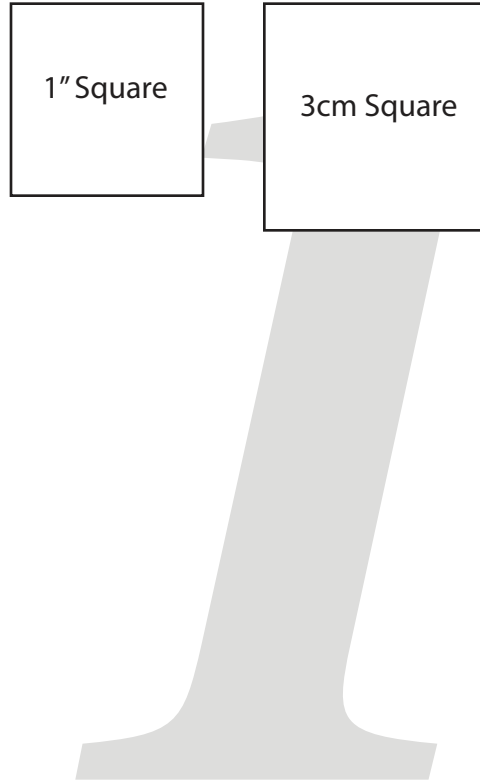
Striped Swallow

DESIGNS

Willow Raglan Pajama Add-on

Printing instructions

- Make sure that you do not scale the pattern pieces. Either "Actual Size" or "Custom Scale: 100%" should be selected.
- The orientation of the pattern is LANDSCAPE. Make sure your orientation is set to either auto or landscape.
- Also make sure that "choose paper source by PDF page size" is **NOT** selected.
- This pattern features trimless pages. See page 4 of the tutorial for more info.



Size Key

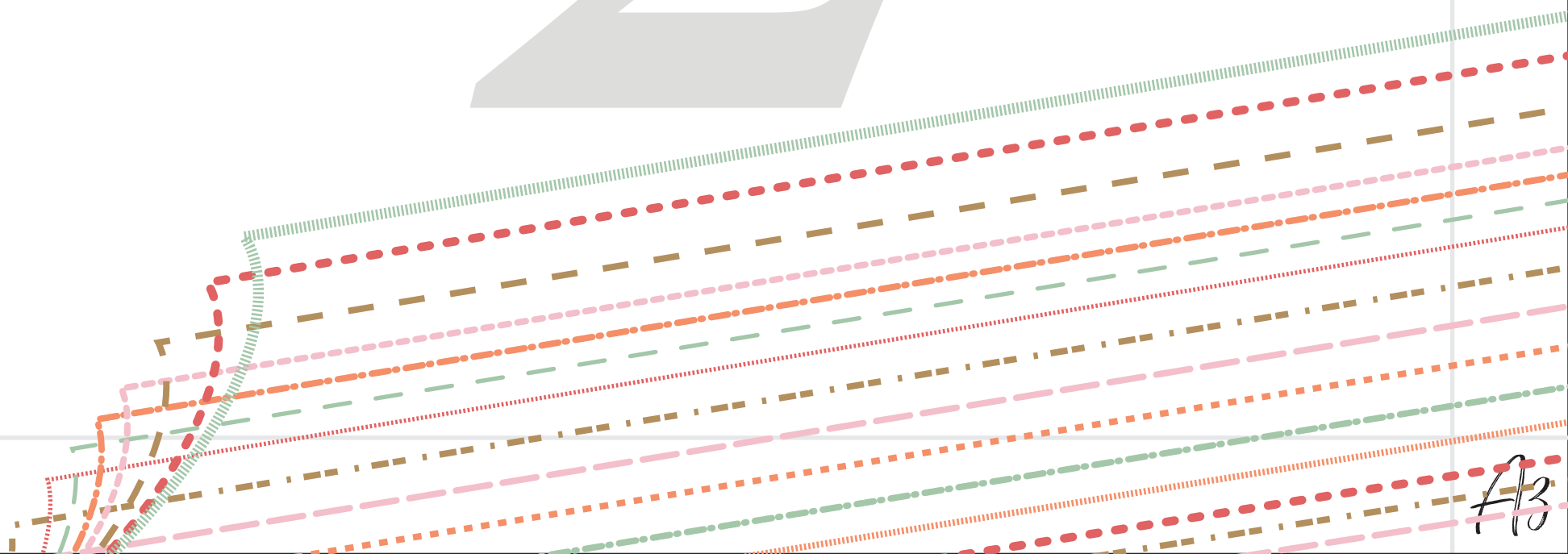
NB	
3m	
6m	
9m	
12m	
18m	
2T	
3T	
4T	
5T	
6	
6x	
7	
8	
10	
12	
14	

If printed correctly, the distance between grey and black overlap lines will be 9.5".

A1

A2

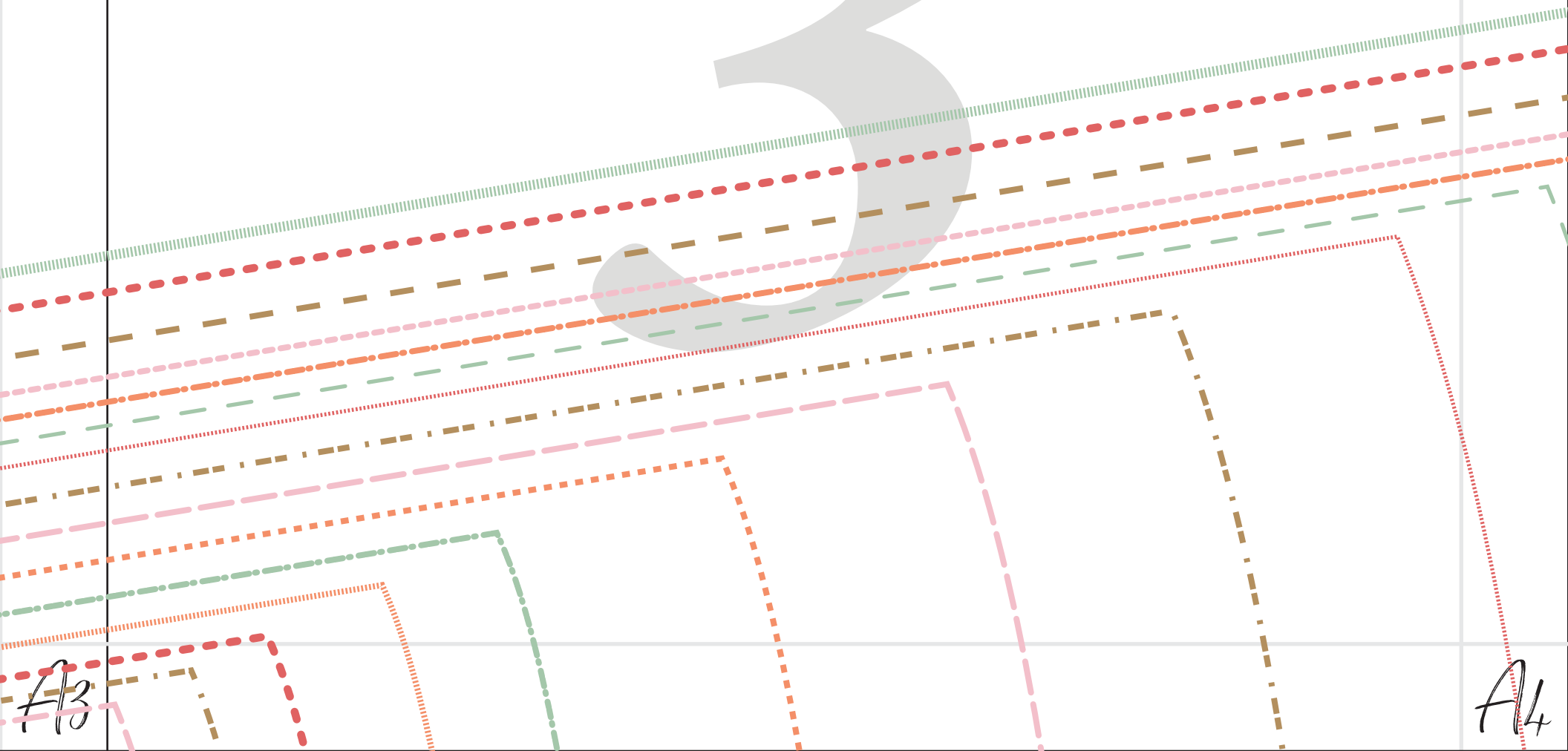
2



A2

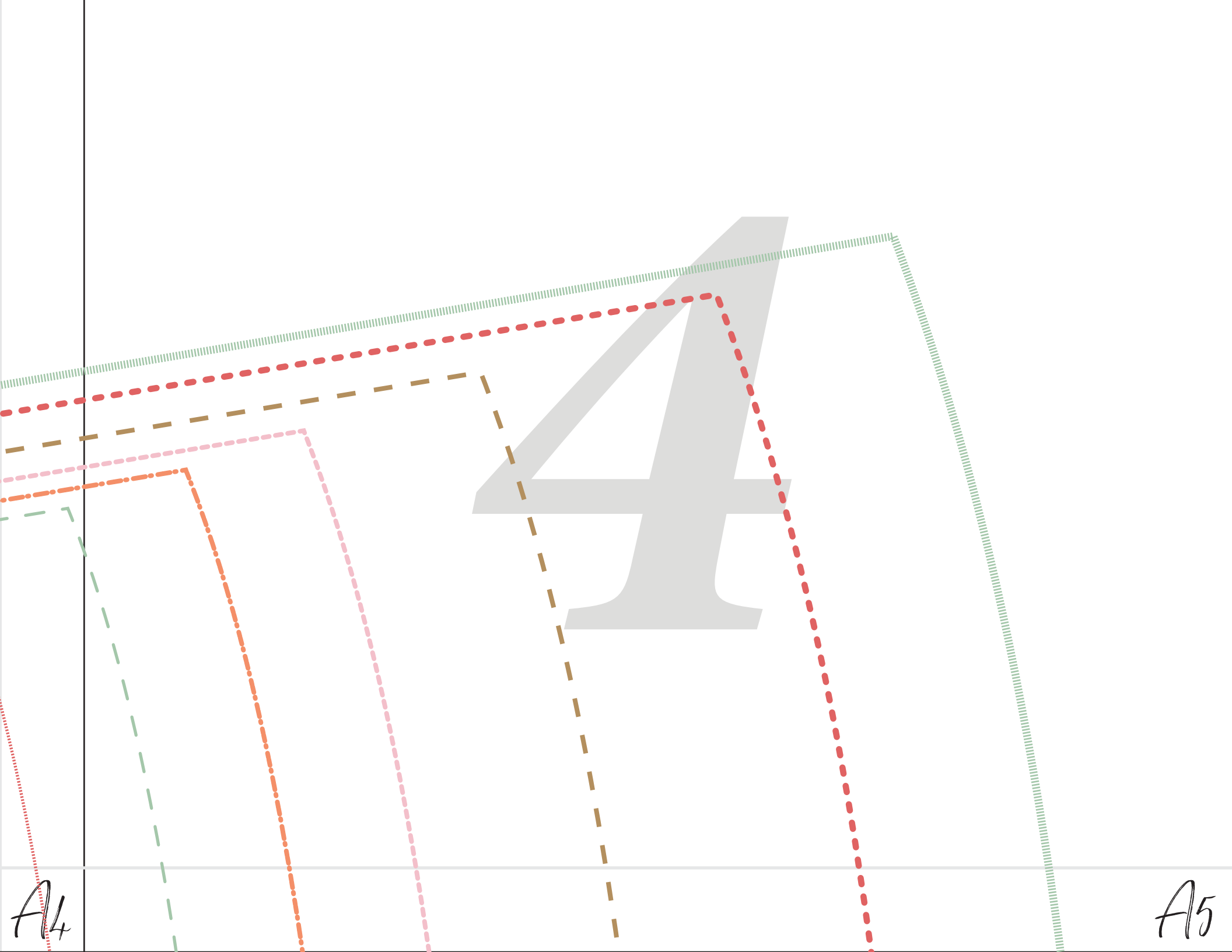
A3

3



A3

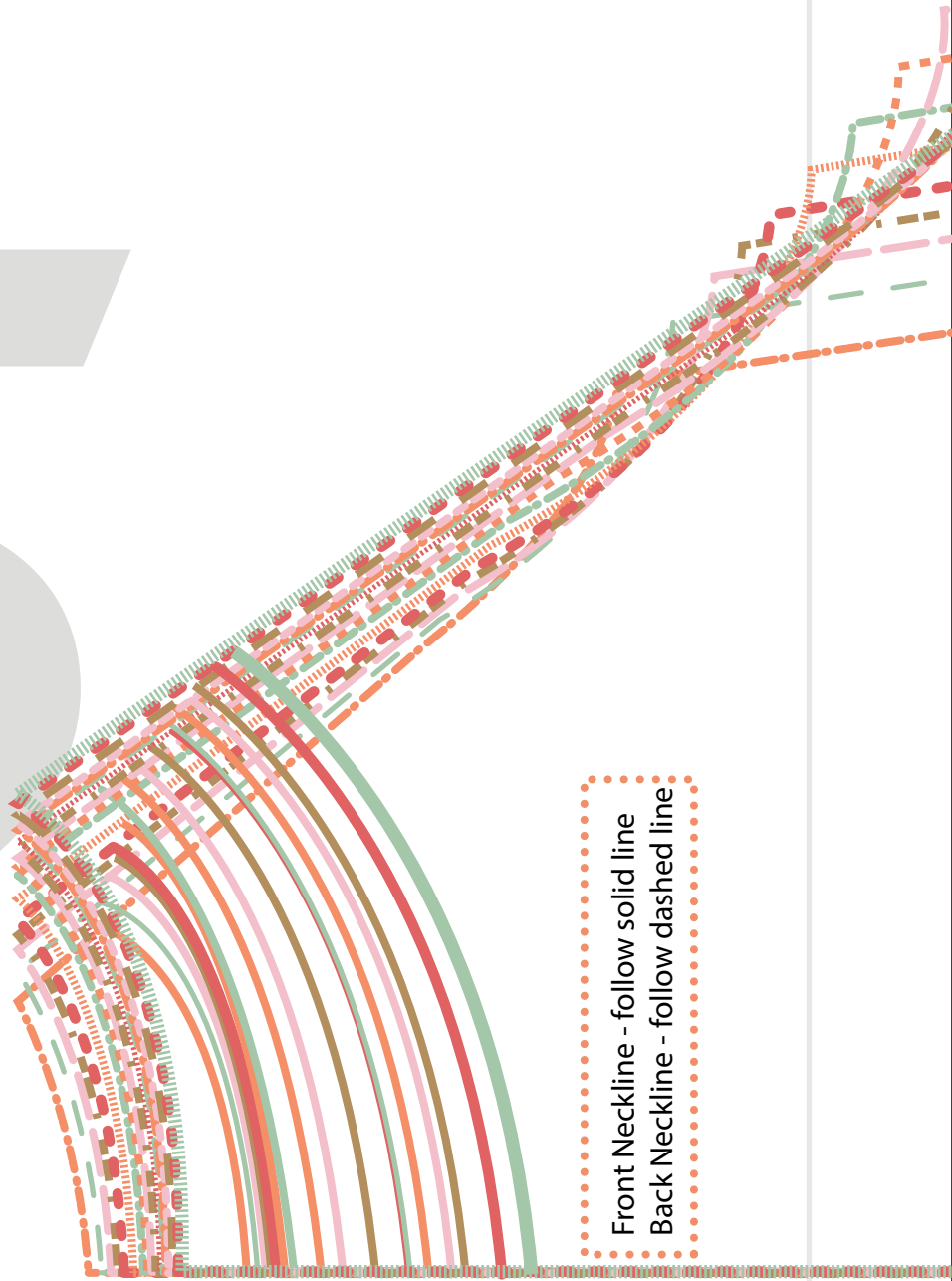
A4



A1

A2

5



Front Neckline - follow solid line
Back Neckline - follow dashed line

B1

B2

A2

A3



Striped Swallow
DESIGNS

*Willow Rayban
-Pajama Add-on*

copyright 2018

Front and Back Bodice

Cut 2 (on fold)

3/8" (1cm) seam allowance included



Stretch



Grainline

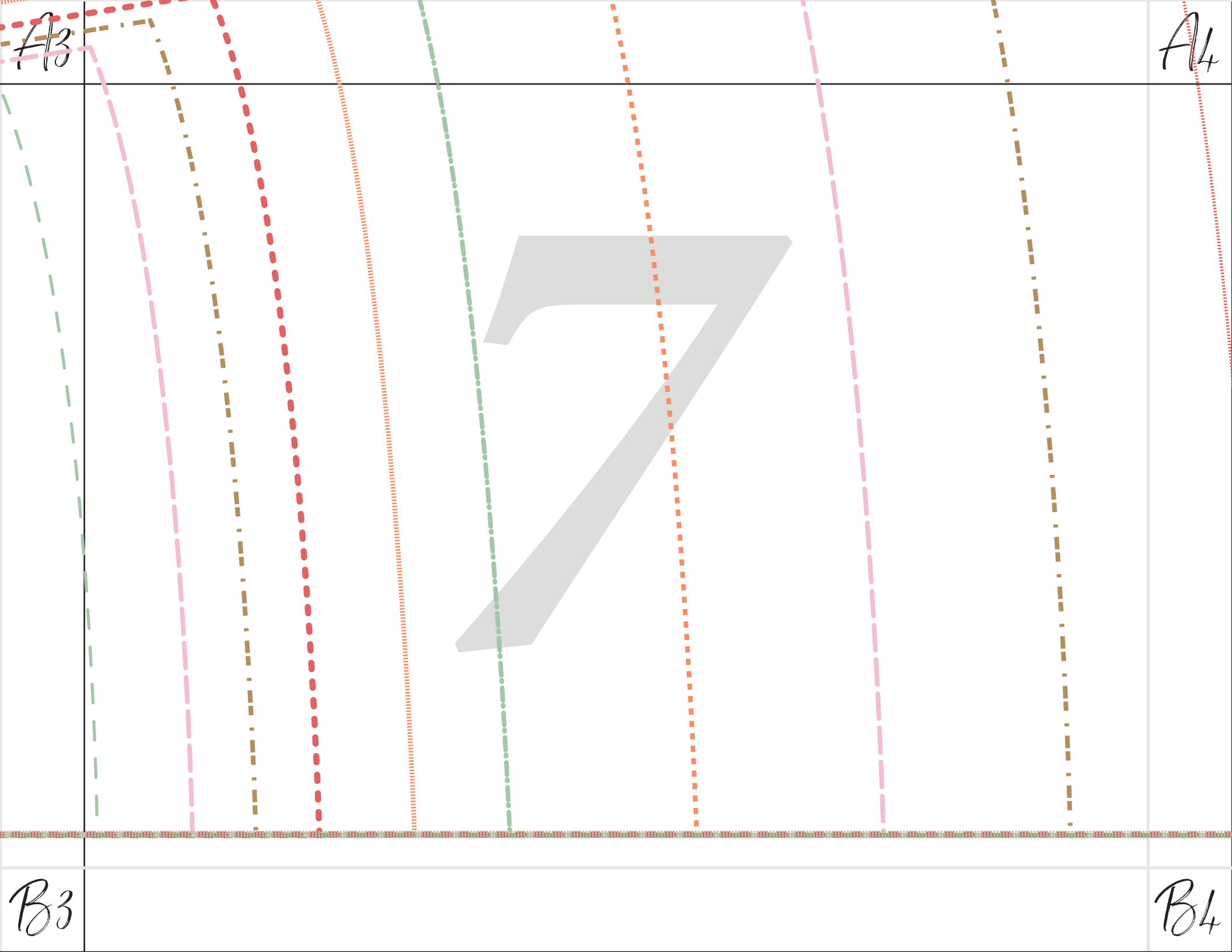


Center Fold



B2

B3



A3

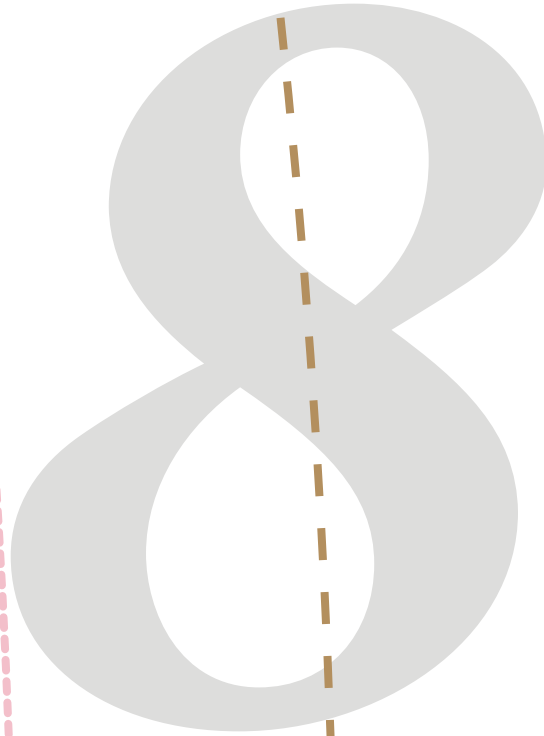
A4

B3

B4

A4

A5



B4

B5