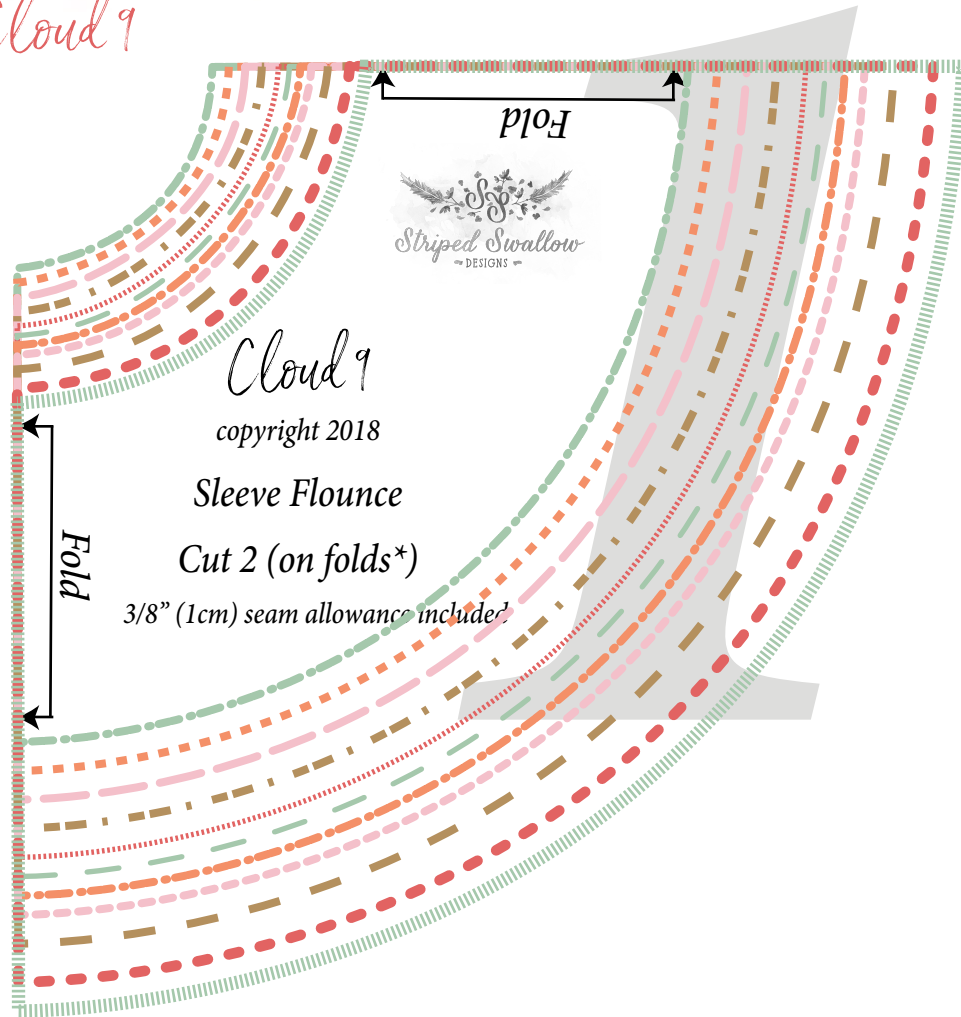




Striped Swallow
DESIGNS

Cloud 9



If printed correctly, the distance between grey and black overlap lines will be 9.5".

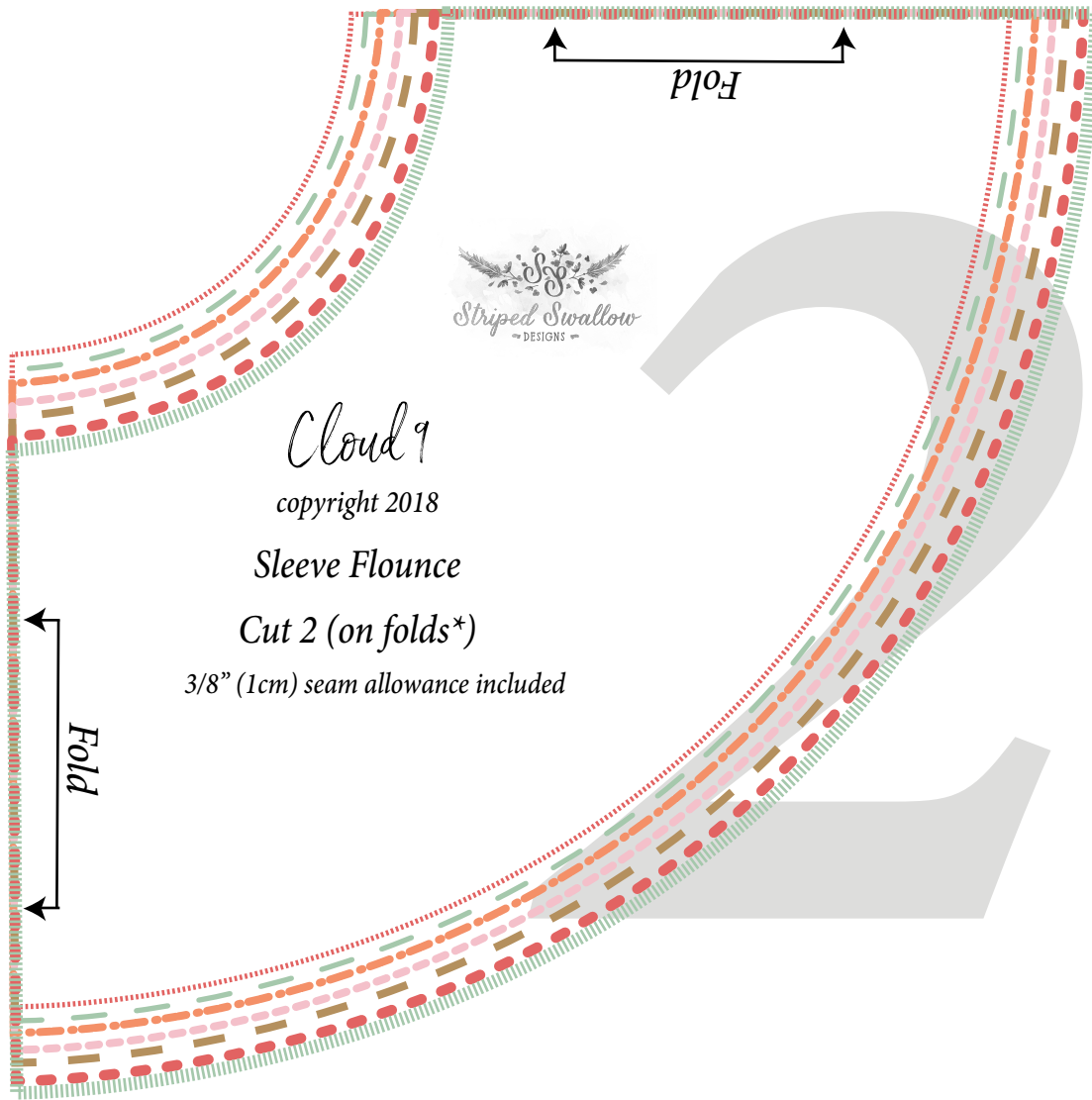
Size Key

- 2T
- 3T
- 4T
- 5T
- 6
- 6x
- 7
- 8
- 10
- 12
- 14

**Note:* The flounce is a circle and will need to be folded differently than most pattern pieces. If you are not familiar with cutting circle skirts, please see the blog post [here](#) for more info on how to fold.

A1

A2



Size Key

XS	
S	
M	
L	
XL	
XXL	
XXXL	

**Note:* The flounce is a circle and will need to be folded differently than most pattern pieces. If you are not familiar with cutting circle skirts, please see the blog post [here](#) for more info on how to fold.

If printed correctly, the distance between grey and black overlap lines will be 9.5".

A2

A3