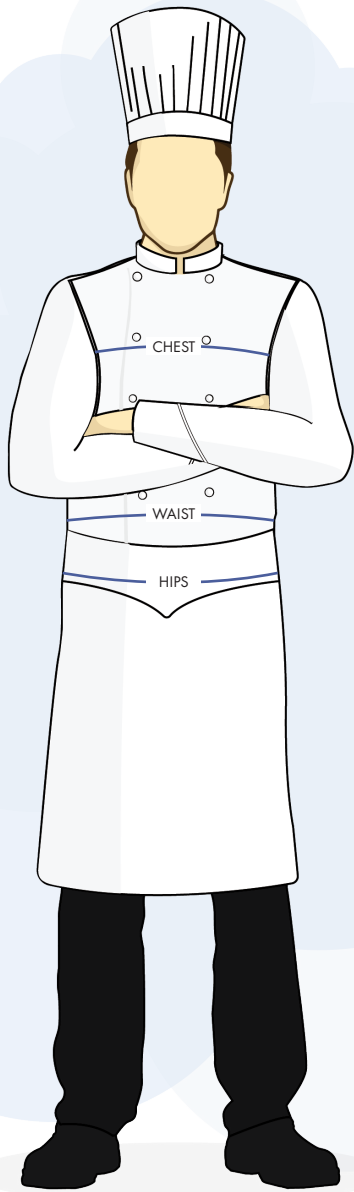


Taking Your Measurements - Clement Design USA Size Chart



Determine your size for Clement Design® apparel using the following measurement charts. Before ordering, take careful measurements and consult the charts below to order the correct size, as sizing varies for different manufacturers. This Size Chart is only a guide. We invite you to call us first if you have any questions at all.

MEASUREMENT GUIDELINES

Take measurements directly over your undergarments. Be sure to stand straight and relax, refer to the illustration to the left as a guide and follow the instruction listed below.

- Chest: Measure horizontally around the body, directly under the armpits around fullest part of your chest/bust and shoulder blades.
- Waist: Measure horizontally around the body at the small of the waist, or natural waist, typically across your belly button.
- Hips: Measure around the widest part of your hips
- Pants: Measure flat across the back waistband from one corner to the other. Double the number to get the actual waist size. Make sure your pants are also facing up, with the front pockets facing the ceiling

EASILY FIND YOUR PERFECT FIT

- 1** How do you prefer your apparel? Clement Design offers Tailored and Traditional Fits.
Tailored Fit - This style offers a slim cut through the chest and body
Traditional Fit - This style offers a wider cut through the chest, sleeves, and waist for increased flexibility throughout
- 2** What are your measurements?
Our size charts refer to your actual chest, waist, or hip measurements. Please refer to the information above and measure carefully. Note that our sizes directly reflect Clement Design sizes you may have worn or wear in Europe.
- 3** Select your favorite(s)!
Clement Design allows you to take advantage of our apparel integrated with or without our patented technology. From our HYBRID mesh and hidden snap buttons to the most gripping footwear in the world, you'll find that you have a lot of options when selecting your chef wear. Please reach out to our professionals if you have any questions at all.

Please note: Our jackets tend to run a bit smaller than standard US sizes. If you are on the cusp of two sizes we recommend you refer to and measure according to the largest number of that size. *If you measure your chest at 90.3 cm, go up to a Medium.* If you'd like to request measurements for any other portions of our chef wear, please reach out via email or phone

MEN

Men's Chef Jackets

US Sizes	XS	SM	M	LG	XL	2XL	3XL	4XL	5XL	6XL
Clement Sizes	T00	T0	T1	T2	T3	T4	T5	T6	T7	T8
Standard Sizes	30/32	32/34	36/38	40/42	44/46	48/50	52/54	56/58	60/62	64/66
Chest Size (cm)	81/85	86/90	91/98	99-106	107/114	115/122	123/130	131/138	139/146	147/154
Max Waist (cm)	85	90	98	106	114	122	130	138	146	154

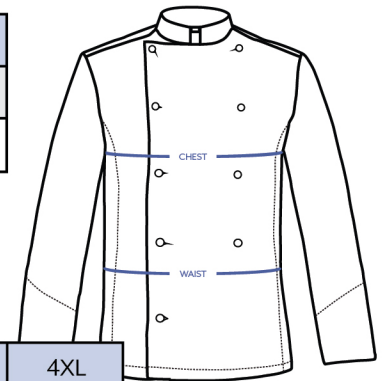
Men's Heritage and Dream Jackets

US Sizes	32	34	36	38	40	42	44	46	48
Clement Sizes	42	44	46	48	50	52	54	56	58
Chest Size (cm)	81/85	85/89	89/93	93/97	98/102	103/107	108/112	113/116	117/120

US Sizes	50	52	54	56	58	60	62	64	66
Clement Sizes	60	62	64	66	68	70	72	74	76
Chest Size (cm)	121/124	125/128	129/132	133/136	137/140	141/144	145/148	149/152	153/156

Men's Chef Shirts

US Sizes	SM	M	LG	XL	2XL	3XL	4XL
Clement Sizes	T0	T1	T2	T3	T4	T5	T6
French Sizes	42/44	46/48	50/52	54/56	58/60	62/64	66/68



WOMEN

Women's Chef Jackets

US Sizes	XS	SM	M	LG	XL	2XL	3XL	4XL
Clement Sizes	T00	T0	T1	T2	T3	T4	T5	T6
Standard Sizes	24/26	26/28	28/30	32/34	36/38	40/42	44/46	48/50
Chest Size (cm)	81/85	86/90	91/95	96-103	104/111	112/119	120/127	128/135

Women's Chef Shirts

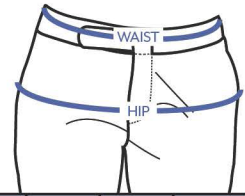
US Sizes	XS	SM	M	LG	XL	2XL	3XL	4XL
Clement Sizes	T00	T0	T1	T2	T3	T4	T5	T6
Standard Sizes	24/26	26/28	28/30	32/34	36/38	40/42	44/46	48/50

We work to keep our product information current. However, if measurements for an item are not listed here, please feel free to request sizing information from us by phone at 844-253-2433, Mon – Fri, 7am-4pm CT, or email at cs@clementdesign.com.



Upgrade your pants with our I-BELT technology, an elastic belt built into the pants allowing for great range of movement as well as quick size adjustments. Our aprons offer SPEED-BELT technology which is a quick and easy to use velcro latch system. Step into the most gripping footwear in the world with ADHERA chef shoes. The highest rated grip coefficient is 50% higher than competing products. The ADHERA sole does not leave traces on the ground.

PANTS

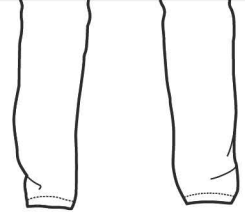


Men's Pants

US Sizes	26	28	30	32	34	36	38	40	42	44	46	48	50	52
Clement Sizes	T36	T38	T40	T42	T44	T46	T48	T50	T52	T54	T56	T58	T60	T62
Waist Size (cm)	76/79	80/83	84/87	88/91	92/95	96/99	100/103	104/107	108/111	112/115	116/119	120/123	124/127	128/131
Sirocco, Fuga, Typhon Furyo, Zac	T0		T1		T2		T3		T4		T5		T6	

Women's Pants

US Sizes	26	28	30	32	34	36	38	40
Clement Sizes	T34	T36	T38	T40	T42	T44	T46	T48
Waist Size (cm)	76/79	80/83	84/87	88/91	92/95	96/99	100/103	104/107



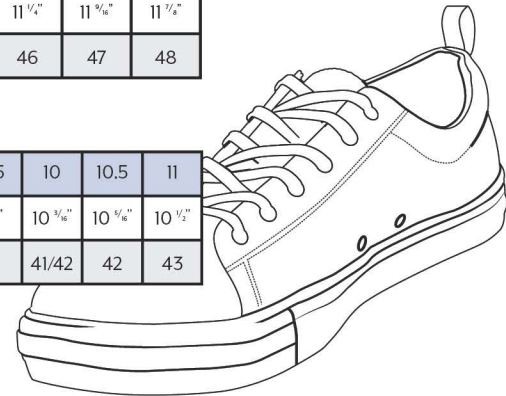
FOOTWEAR

Men's Shoes

US Size	7	7.5	8	8.5	9	9.5	10	10.5	11	11.5	12	13	14
Inches	9 1/8"	9 3/8"	9 5/8"	10 1/8"	10 3/8"	10 5/8"	10 7/8"	10 9/8"	11 1/8"	11 3/8"	11 5/8"	11 7/8"	11 9/8"
EUR Size	40	40	41	41/42	42	43	43/44	44	44	45	46	47	48

Women's Shoes

US Size	4	4.5	5	5.5	6	6.5	7	7.5	8	8.5	9	9.5	10	10.5	11
Inches	8 1/8"	8 3/8"	8 5/8"	8 7/8"	8 9/8"	9 1/8"	9 3/8"	9 5/8"	9 7/8"	9 9/8"	10"	10 1/8"	10 3/8"	10 5/8"	10 7/8"
EUR Size	35	35	36	36	37	37	38	39	39	40	40	41	41/42	42	43



APRONS

Men's Aprons - *Wok, Massala, Mioga, Gamay, Livanto*

Clement Sizes	T1	T2	T3	T4
Waist Size (in)	28-32	34-40	42-46	48-52

Women's Aprons - *Shiso, Syrah, Karma, Tonka*

Clement Sizes	T1	T2	T3
Waist Size (in)	28-32	34-40	42-46

Unisex Aprons - *Badiane, Coriandre, Paprika*

Clement Sizes	T1	T2
Waist Size (in)	26-36	38-46

We work to keep our product information current. However, if measurements for an item are not listed here, please feel free to request sizing information from us by phone at 844-253-2433, Mon – Fri, 7am-4pm CT, or email at cs@clementdesign.com.

