



STRIDE  
FREE<sup>®</sup>  
RACING

RACING CATALOGUE  
2020





---

“ I have known Peter for over 40 years and purchased one of his very first whips he made. I have seen him work on his designs continuously to be the best they can possibly be. Celebrating 35 years in business is a milestone in itself and so pleased my stables get to experience his revolutionary saddles. ”

Andreas Wohler - 2014 Melbourne Cup Winner



# THE SCIENCE

---

When we discuss saddles of any type, there usually follows a conversation of the saddle tree. The StrideFree® tree, has been designed to allow complete freedom of the horses' shoulder movement. This will allow lengthened stride and can also give the horse a more comfortable and productive workout.

The horses' forelimbs are considered to be attached by a 'false joint'. Only soft tissue structures (muscles and fascia) hold the forelimbs to the trunk (horses lack of a collar bone), thus any restriction of those structures can impede full range of motion through extension and retraction of the limb. The top portion of the scapula is a cartilage cap, and the rest is bone. The thin trapezius muscle which has both a cervical and thoracic portion plays a role in forelimb attachment and movement, and also houses sensitive nerves, which when triggered can cause a hollowing of the back and raising of the head, as well as pain in the surrounding area and behavioural or training problems. Your common half trees and full trees, whether steel or wood, hang on to this area, directly affecting the spine and nerves causing pain and influencing performance.

This is why the StrideFree® philosophy has become one of the most important cogs in the wheel of training methods. Ultimately, when a StrideFree® tree is used every day in comparison to other trees, it can assist and improve on performance.

The tree has been tested for breakage under extremely strenuous conditions, which allows us to be confident in providing a 100% guarantee and lifetime warranty on the saddle tree.

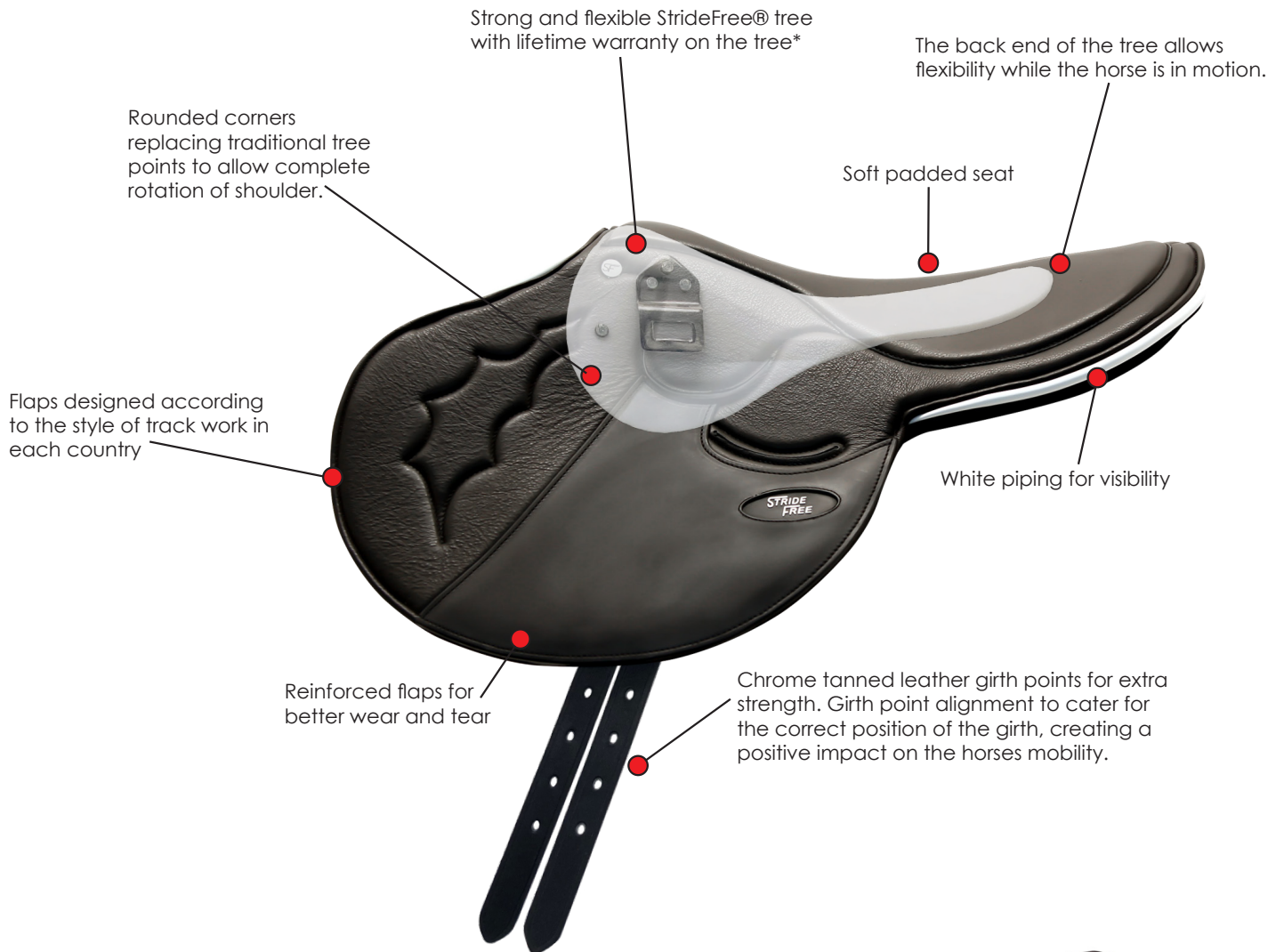
The stirrup bars have two designs. One is Australian standard and the other a safety stirrup bar, meeting International standards. They have been tested for strength and safety.

Peter Horobin, who has been a saddler and saddle fitter for over 35 years, thought about the equine anatomy when developing the patent designed StrideFree® tree, and from his experience working with equine professionals across the world, he was able to develop a saddle that features cutting edge technology that also encompasses comfort for the rider.

---



# FEATURES



Wither clearance to reduce pressure. Medium gullet to ensure it sits well on young horses without rolling. Can also be ordered with a wide gullet to allow for more developed horses.



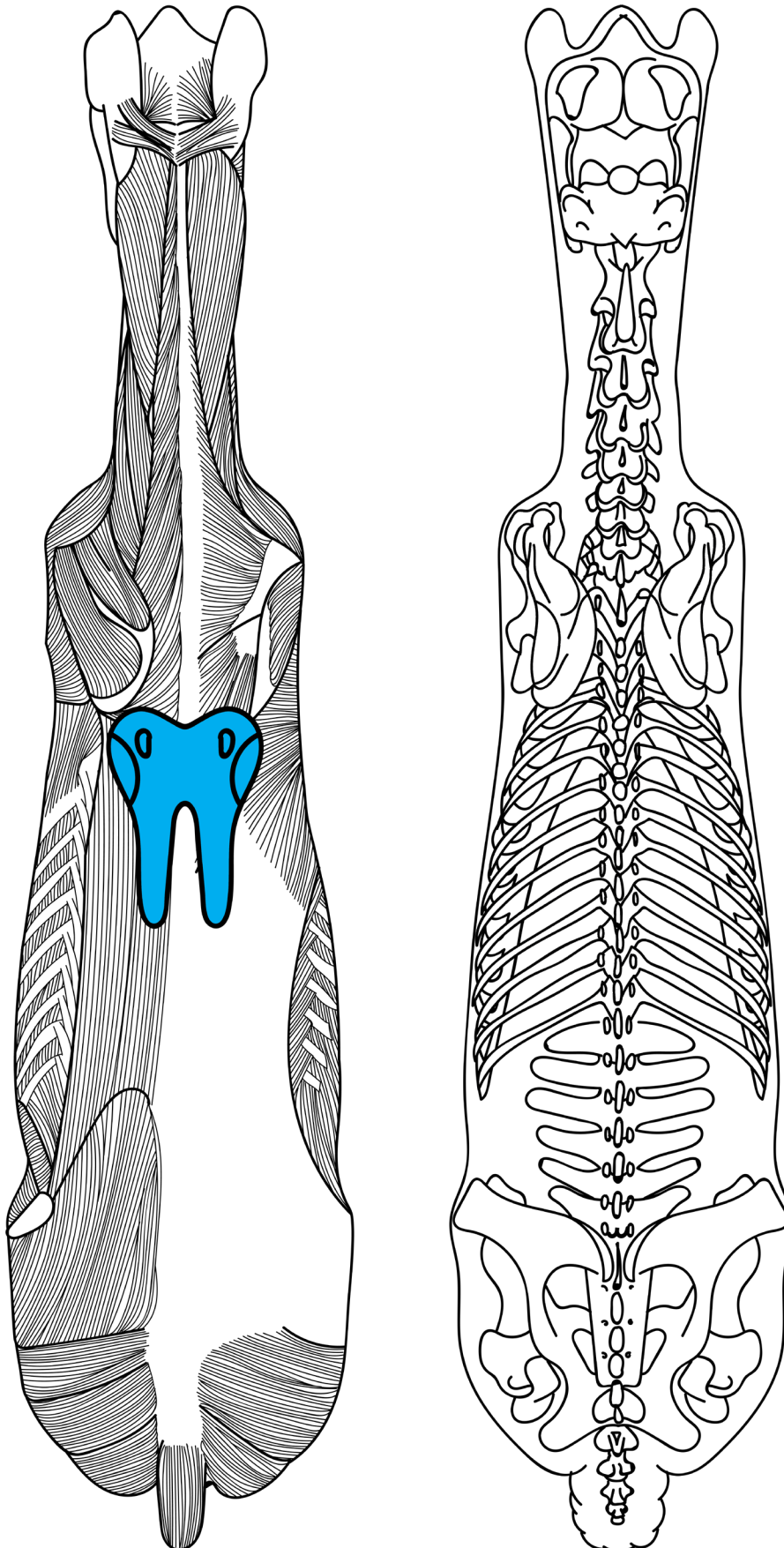
Wide channel to ensure spinal clearance and comfort for the horse.

\*Visit our website for Terms and Conditions



# STRIDEFREE® TREE ON THE HORSE

---







*STRIDE*  
*FREE*®



Innovation and Design  
Award Winner  
**2014**



# EXERCISE SADDLES

---



Available only in Australia

## ORIGINAL

- CODE** SForiginal
- COLOURS** White piping and white stitching
- GIRTH STRAPS** 7/8" Solid chrome tanned girth straps
- LEATHER** Full Grain Leather



## DELUXE

- CODE** SFdeluxe
- COLOURS** White piping and black stitching
- GIRTH STRAPS** 7/8" Solid chrome tanned girth straps
- LEATHER** Full Grain Leather
- EXTRA FEATURES** Extra soft padded seat, first grade leather



All **Australian** training saddles have the compulsory **closed stainless steel safety bar**.



Any saddles purchased **Internationally** will feature the **safety stirrup bar**.

---



# EXERCISE SADDLES

---



## USA STYLE

- CODE** SFamerica
- COLOURS** White piping and black stitching
- GIRTH STRAPS** 1" Solid chrome tanned girth straps
- LEATHER** Full Grain Leather
- EXTRA** Extra soft padded seat, first grade leather
- FEATURES**



## MONTE

- CODE** SFmonte
- COLOURS** White piping and white stitching
- GIRTH STRAPS** 1" Solid chrome tanned girth straps
- LEATHER** Full Grain Leather.
- EXTRA** Front and rear D-rings
- FEATURES**

“ We have enjoyed working with StrideFree® over the last 12 months as part of our Melbourne Cup campaign for Vow & Declare. The saddles are an integral part of the day to day operations and we have seen some positive results with the girths. I really do feel they have allowed more freedom in the horse's stride length.”

Danny O'Brien - 2019 Melbourne Cup Winner

---

# EXERCISE ACCESSORIES

---

## STRIDEFREE® EXERCISE GIRTH



Made from anti-gall material. USA/Europe: 1" buckles. Aus/NZ/Japan: 7/8" buckles. Code: SFgirth

## ELASTIC GIRTH & SURCINGLE SET



Durable elastic surcingle and girth.  
Available only at RRP.  
Code: Allelastic

## ELASTIC BREAST PLATE - PVC STRAPPING



Elastic breastplate with PVC strapping.  
Available only at RRP.  
Code: Breastplate

## STAINLESS STEEL SAFETY STIRRUPS



Stainless steel safety stirrups.  
Available only at RRP.  
Code: Safetystirrups

## STRIDEFREE® EXERCISE STIRRUP LEATHERS



Durable, strong whilst soft and comfortable against your leg. The exercise training stirrup leathers are perfect for track in the morning. Tested for strength and maximum weight, these leathers won't crack under pressure. Code: SFleathers

---





Vow and Declare - 2019 Melbourne Cup Winner  
in our Plain Leather Headcollar with Brass Nameplate



---

PRE-TRAINING



TRACK WORK



OTT OWNER



EQUINE BACK HEALTH  
**SOLUTIONS**  
FOR EACH STAGE

RACING



RE-TRAINING



RETIREMENT

---





## OUR VISION

To be recognised as a leader in setting the standards of equine back health through saddles.

- Communicating the importance of equine back health at every stage of the thoroughbreds life.
- Work globally with re-trainers and organisations in providing education and practical knowledge to help care for the thoroughbreds back health throughout.
- Work with equine professionals in developing knowledge and new science surrounding equine back health.
- Education about the continual changing shape of the thoroughbreds back.



# PRE-TRAINING

---



Educating horse breakers that this is the most important stage of growth. Ensuring that the saddle they use; whether it is a stock saddle, half breed, equestrian or track saddle, is to be fitting correctly to suit a young horse.

A criteria list of what is required in a saddle that can apply to all brands of saddles, that allows freedom in shoulder movement, clearance of spinal processes and no pressure on the wither area. All areas which can cause pain and discomfort for horses if not assessed correctly.

## PRE-TRAINING

**WHAT WE WILL BE OFFERING:** PHS will be creating a collection of education material for pre-trainers, which allow them to understand the fundamentals of what it means to have a correctly fitting saddle. This education material will be free and easily accessible to all pre-trainers. Incentives for our services and products will be provided to participating pre-trainers.

# IN TRAINING

---



## TRACKWORK

The evolution of the StrideFree® exercise saddle has been a credit to Peter Horobin and the many professionals who have been willing to share their information with us about their results in treatment to improve equine welfare over the last 10 years. With these results, we have been able to design a cutting edge saddle which allows complete freedom of the horse's movement, reduce wither soreness, prevents speedy cutting, secondary pain, girthing, changed attitude in the unwillingness to be saddled, improved smoother transitions out of the gates and overall improved performance and stride length.



## RACING

**WHAT WE WILL BE OFFERING:** The continual education of back health under saddle with trainers. Creating partnerships with training stables working with their horses which have back issues to help them understand that the incorrect saddle can be a contributing factor to back soreness. 'One on one' demonstrations at the track, and on site chats with stables and track work riders to discuss the importance of back health and how everyone can take accountability to recognise and promote equine welfare through saddle fit from the beginning.

---



# LIFE AFTER RACING

---



## RETIREMENT

The expectations and accountability the racing industry has been working on within their equine welfare programs, has been an excellent step to promoting equine welfare in racing. The responsibility of trainers providing homes for their horses leaving their care can be a difficult task.

Our connection with the equestrian industry and being able to cover all disciplines is a point of difference for StrideFree®. Having that pre-existing relationship with the trainer and their understanding about equine back health can then be transferred to the new owner of the horse.

**WHAT WE WILL BE OFFERING:** Providing trainers with a monetary incentive as a referral fee to act as a credit in our system when they purchase more StrideFree® saddles from us. Providing them with the education needed to pass onto the client who receives an Off The Track horse, with the opportunity to have ANY brand of saddle assessed by our team at Peter Horobin Saddlery (complimentary online assessment) .



## RETRAINERS

Work with re-trainers in various locations across Victoria and provide an incentive program to them with referrals. Assisting them by running Saddle Fit Days. Eg. Pilot day at Bellbird Park after the Pakenham OTT Horse's birthday was a successful endeavor in 2018., by providing a day of complimentary on site consultations to all re-trainers who attended RV OTT birthday.



## OTT OWNER

Giving OTT owners the personal touch of owning a Peter Horobin Saddle by providing them with a stamp of recognition on their saddle for owning an OTT horse.

Providing incentives for the customer who shop with us and use our services.

Investing back into the industry by giving a donation from each saddle where is needed, at the time complimenting goals of Racing Victoria, Harness Racing, or equine therapy projects.

# RACE SADDLES

---

## 195g AERO RACE SADDLE



**CODE** SF195

**COLOURS** See colour chart for leather, stitching and piping options

**GIRTH** Stitched in girth strap.

**STRAPS** (Two girth straps not available)

**TREE LENGTH** 9.5" (24cm)

**LEATHER** Patent Leather, Full Grain Leather

## 350-400g RACE SADDLE



**CODE** SF350-400

**COLOURS** See colour chart for leather, stitching and piping options

**GIRTH** Stitched in girth straps. Single or

**STRAPS** double billets available. Additional pairs available for purchase.

**TREE LENGTH** 11" (28cm)

**LEATHER** Patent Leather, Full Grain Leather

## 450-500g RACE SADDLE



**CODE** SF450-500

**COLOURS** See colour chart for leather, stitching and piping options

**GIRTH** Stitched in girth straps. Single or

**STRAPS** double billets available. Additional pairs available for purchase.

**TREE LENGTH** Length 12.5" (32cm)

**LEATHER** Patent Leather, Full Grain Leather

## 600-700g RACE SADDLE



**CODE** SF600-700

**COLOURS** See colour chart for leather, stitching and piping options

**GIRTH** Stitched in girth straps. Single or

**STRAPS** double billets available. Additional pairs available for purchase.

**TREE LENGTH** Length 14" (36cm)

**LEATHER** Patent Leather, Full grain leather

Forward cut flap option available

---



# RACE SADDLES

---

## 1kg RACE SADDLE



Forward cut flap option available

- CODE** SF1kg
- COLOURS** See colour chart for leather, stitching and piping options
- GIRTH STRAPS** Stitched in girth straps. Single or double billets available. Additional pairs available for purchase.
- TREE LENGTH** Length 16" (41cm)
- LEATHER** Patent Leather, Full grain leather

## 1.5kg RACE SADDLE



Forward cut flap option available

- CODE** SF1.5kg
- COLOURS** See colour chart for leather, stitching and piping options
- GIRTH STRAPS** Stitched in girth straps. Single or double billets available. Additional pairs available for purchase.
- TREE LENGTH** Length 17" (43cm)
- LEATHER** Patent Leather, Full grain leather

## 2kg RACE SADDLE



Forward cut flap option available

- CODE** SF2kg
- COLOURS** See colour chart for leather, stitching and piping options
- GIRTH STRAPS** Stitched in girth straps. Single or double billets available. Additional pairs available for purchase.
- TREE LENGTH** Length 17" (43cm)
- LEATHER** Patent Leather, Full Grain Leather

## 3kg RACE SADDLE



Forward cut flap option available

- CODE** SF3kg
  - COLOURS** See colour chart for leather, stitching and piping options
  - GIRTH STRAPS** Stitched in girth straps. Single or double billets available. Additional pairs available for purchase.
  - TREE LENGTH** Length 18.5" (47cm)
  - LEATHER** Patent Leather, Full Grain Leather
-

# RACE DAY ACCESSORIES

---

## ANTI-REARING STRAP



English leather anti-rearing strap with brass buckles to match your headcollar on race day.  
Code: PHrearing

(Bit seen in image is not included. Purchase separately)

## RACE BRIDLE - BUCKLE THE OVER HEAD



The Peter Horobin English leather race bridle with the buckle overhead has been used on many winning horses in Australia and overseas. Adjustments on cheek pieces and throat lash, the race bridle is winner for race day.

Code: PHbridlebuckle

## LEATHER RACE BRIDLE - SLIDING BROWBAND



Peter Horobin English leather race bridle with sliding browband features brass buckles and adjustable throat lash and cheek pieces.  
Code: PHbridlebrow

## LEATHER BIT LIFTER



The English leather bit lifter with attachment and brass buckles.  
Code: PHbitlifter

## STRIDEFREE® CROSSOVER NOSEBAND



English leather with stainless steel buckles, hand stitched and comfortable leather nosepiece.  
Code: Crossover

## STRIDEFREE® CROSSOVER NOSEBAND SHEEPSKIN



English leather with brass fittings and sheepskin for softness around the nose.  
Code: Crossoverssheep

---



# RACE DAY ACCESSORIES

---

## PLAIN LEATHER HEADCOLLAR



Plain English leather headcollar with stitching and brass buckles. Available in black or brown.

Sizes: Pony, Cob, Full and WB.  
Code: PlainHC

## BRASS NAMEPLATE



Brass nameplate to fit your headcollar. We can organise the engraving or send to you with no engraving. Each plate comes with screws. Purchase our plain leather headcollar, and we'll organise the engraving and have our PHS saddler put the nameplate on for you.  
Code: PaddedHC

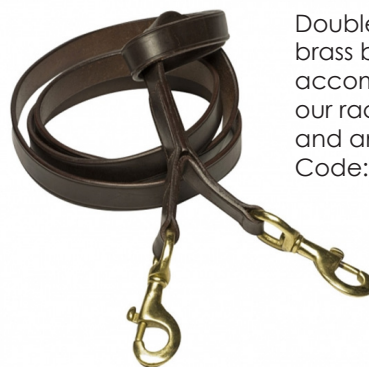
WINX

## SINGLE CLIP LEAD WITH LOOP



Single clip lead with loop. Made in English leather with brass buckles.  
Code: PHsingle

## LEATHER DOUBLE CLIP LEAD



Double clip lead with brass buckles. Perfect accompaniment with our race day bridle and anti-rearing strap.  
Code: PHdouble

## STALLION CHAIN & LEATHER LEAD



Stallion chain and leather lead is very popular for adding extra glamour to your stallion. Made in English leather. Durable and strong lead.  
Code: Leads

---

# LEATHERS

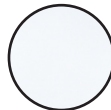
---



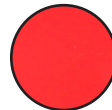
Patent Leather



Black



White



Red



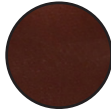
Blue



Goat Leather



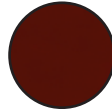
Black



Brown



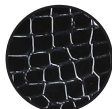
Chestnut



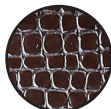
Burgundy



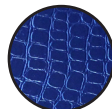
Croc Print



Black



Brown



Blue



Red



Snake Skin Print



Blue



Red



Grippy Leather



Black



Brown



Chestnut

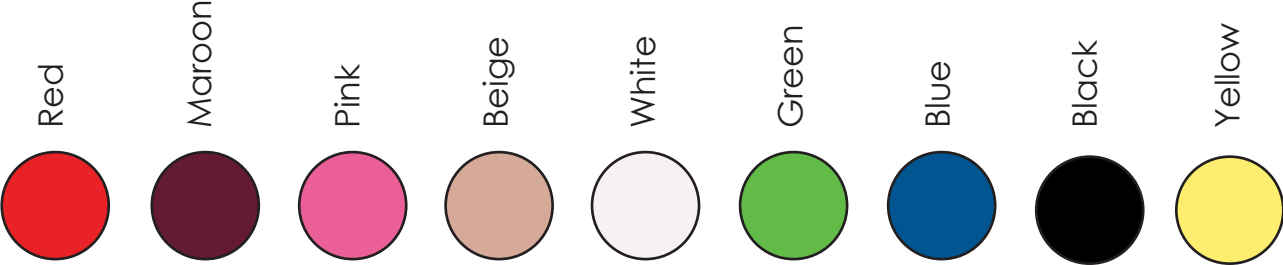
Colours represented here are a guide only and may slightly differ to actual product. Colours subject to availability.

---

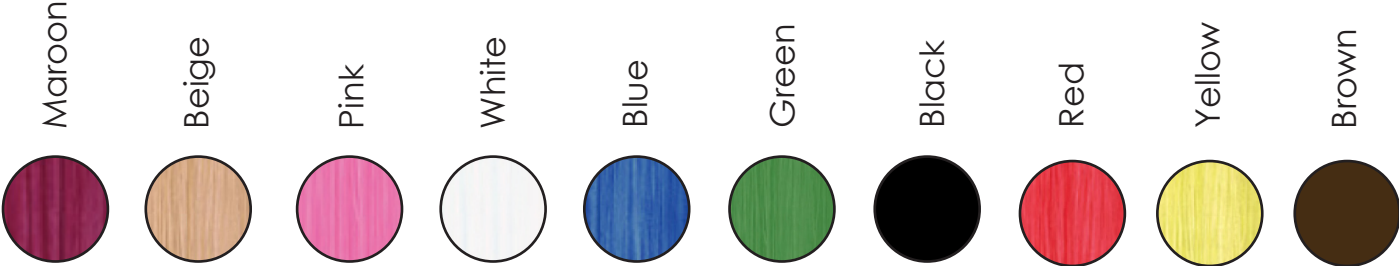
# COLOURS

---

## PIPING COLOURS



## STITCHING COLOURS



Embroidery options are available upon request

Colours represented here are a guide only and may slightly differ to actual product. Colours subject to availability.

---



*STRIDE*  
*FREE*<sup>®</sup>  
RACING

Peter Horobin Saddlery  
18 Milgate Drive, Mornington, Victoria 3931  
Australia

Tel: 61 3 5975 1055  
Email: [stridefree@horobin.com.au](mailto:stridefree@horobin.com.au)  
Web: [stridefreeracing.com.au](http://stridefreeracing.com.au)

