

Mevo+ User Manual



Performance data you can trust



| @flightscopegolf



"FlightScope technology is developed to offer you performance data you can trust in your pursuit of excellence."

A handwritten signature in black ink, appearing to read "H. Johnson", is positioned above the name "Henri Johnson - Founder & CEO".

Henri Johnson - Founder & CEO

FCC Statement: This equipment has been tested and found to comply with the limits for a Class B digital device, pursuant to Part 15 of the FCC Rules. These limits are designed to provide reasonable protection against harmful interference in a residential installation. This equipment generates, uses and can radiate radio frequency energy and, if not installed and used in accordance with the instructions, may cause harmful interference to radio communications. However, there is no guarantee that interference will not occur in a particular installation. If this equipment does cause harmful interference to radio or television reception, which can be determined by turning the equipment off and on, the user is encouraged to try to correct the interference by one or more of the following measures:

- Reorient or relocate the receiving antenna.
- Increase the separation between the equipment and receiver.
- Connect the equipment into an outlet on a circuit different from that to which the receiver is connected.
- Consult the dealer or an experienced radio/TV technician for help.

Changes or modifications not expressly approved by FlightScope (PTY) could void the user's authority to operate the equipment.

ISED Statement: This device contains licence-exempt transmitters(s)/receiver(s) that comply with Innovation, Science and Economic Development Canada's licence-exempt RSS(s).

Operation is subject to the following two conditions:

- (1) This device may not cause interference.
- (2) This device must accept any interference, including interference that may cause undesired operation of the device.

Declaration IC: Cet appareil contient des émetteurs/récepteurs exemptés de licence conformes à la norme Innovation, Sciences, et Développement économique Canada.

L'exploitation est autorisée aux deux conditions suivantes:

- (1) L'appareil ne doit pas produire de brouillage.
- (2) L'utilisateur de l'appareil doit accepter tout brouillage radioélectrique subi, même si le brouillage est susceptible d'en compromettre le fonctionnement.

Japanese caution: for Indoors use only.

+++++本機器の使用に係る注意事項+++++ 本機器の使用周波数帯（10.5GHz を超え10.55GHz 以下の周波数）では、免許を受けて屋外で利用されている無線局があります。これらとの干渉が懸念される為、本機器の使用は、屋内での使用、即ち住宅、マンション、ビル等の建築物内のみと限定されています。万一、10.5GHz 帯の周波数を使用する移動体検知センサーを屋外で使用した場合には、その使用に支障が生じるばかりでなく、電波法令に違反し罰則の適用を受けることとなりますので、十分注意してください。

Contents

Performance tracking	1	Setup	11
In the box	2	Setback	11
Mevo+	3	Aiming	12
Charging	4	Clearance	13
Battery indicators	5	Tips	14
System indicators	6	Indoor ball spin	17
Get the app	7	Tee the ball	18
Connect to Mevo+	8	Switch off	19
Kickstand	10	Electronic noise	20
		Care	23
		Avoid	24
		FAQ's and support	25
		Technical specifications	27

Performance tracking

Visit myFlightScope.com to analyze and track your performance over time.



Join the myFlightScope.com community and connect with fellow golfers like yourself. Keep track of your stats over time, spot trends or tendencies and see how you have improved.



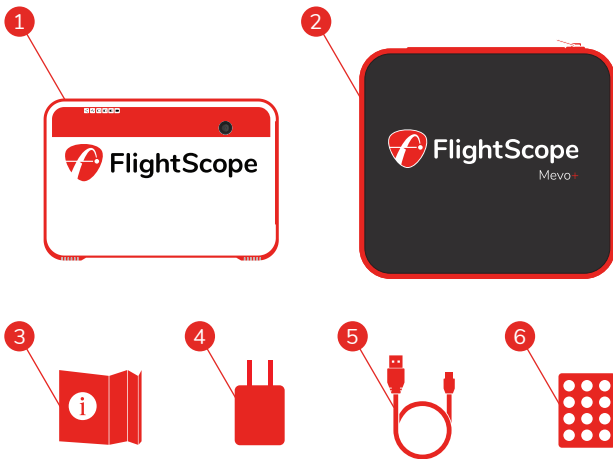
Practice with any FlightScope app and get instant feedback on your ball flight and swing, or challenge your friends and compete for a spot on our leaderboards.



All of your data is automatically uploaded to myFlightScope.com where you can share your success with your coach and friends.

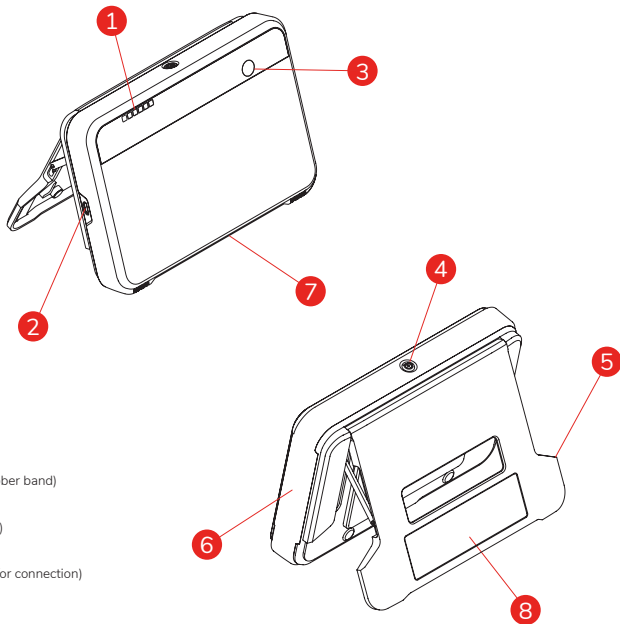
In the box

- 1 Mevo+
- 2 Case
- 3 Quickstart guide
- 4 Power adapter
- 5 USB charging cable
- 6 Aluminum stickers
(Only needed for indoor use)



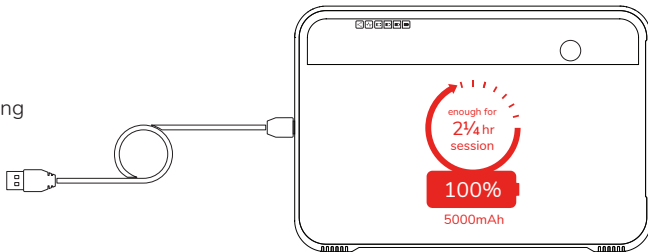
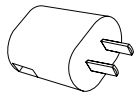
Mevo+

- 1 Indicators
- 2 USB charging port
- 3 Alignment camera
- 4 On/Off button
- 5 Kickstand
- 6 5000 mAh Battery (under rubber band)
- 7 Tripod mount (bottom of the unit)
- 8 Serial Sticker (includes QR code for connection)



Charging

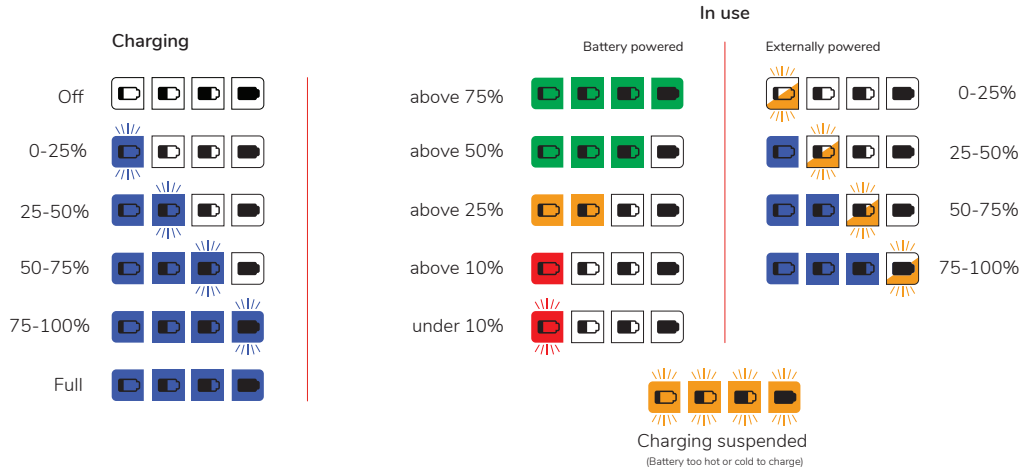
4hrs for a full charge using
the supplied adapter.



External FlightScope battery packs available
in shop on flightscopemevo.com



Battery indicators



System indicators

Connection Status

Off



Ready



Connected



Radar Status



System off



Power on, switching on



Processor start up 30-60 seconds



Standby mode



Armed, ready to measure



Processor shut down 15-30 seconds



Battery empty

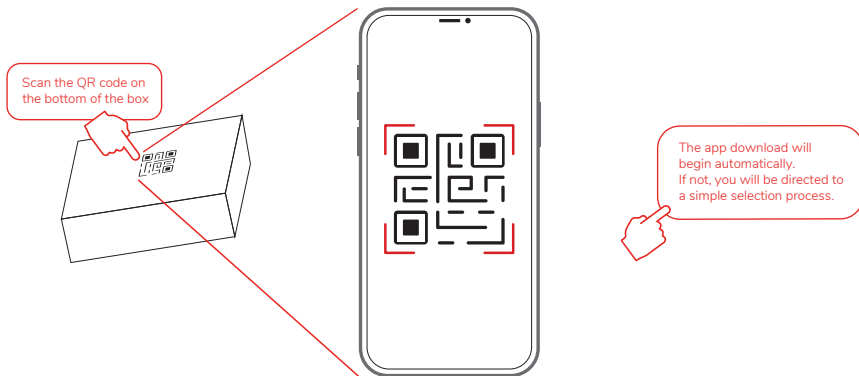


Error



Get the app

Download and install the **FS Golf** app.



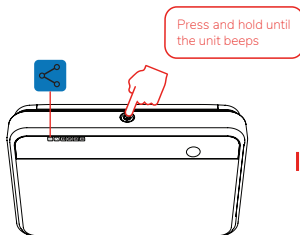
Connect to Mevo+

1



Switch on mobile device

2



Switch on unit

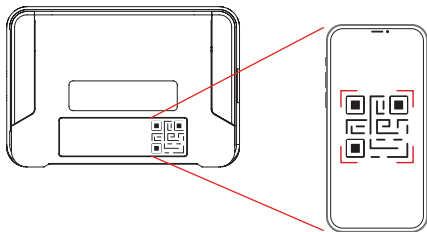
3



Launch FS Golf app

The username and password you setup will be the same for **myflightscope.com**

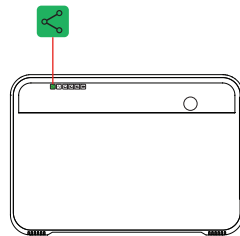
4



In app, scan QR code
on back of unit

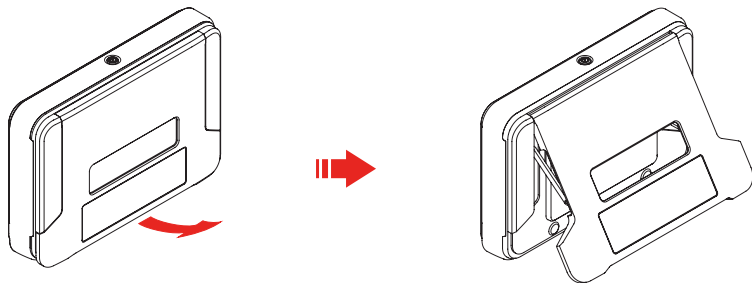


5



Connected

Kickstand



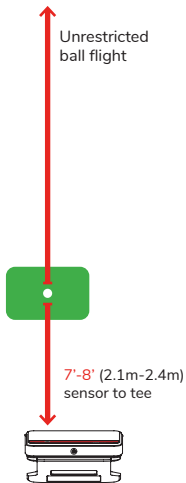
Open the Kickstand before placing.

The kickstand will stop at open position. With the kickstand open, the radar will be at the correct tilt angle on a flat surface.

!
Do not over extend the kickstand or force it past it's open position, this can cause damage to your unit.

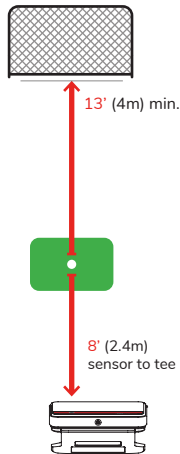
Setup - Setback

OUTDOOR



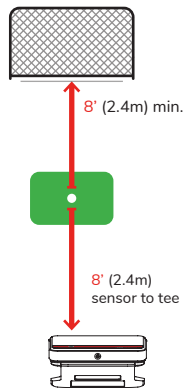
INDOOR

Metallic dots required



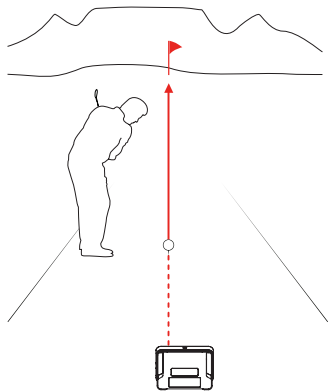
SHORT INDOOR

Metallic dots required

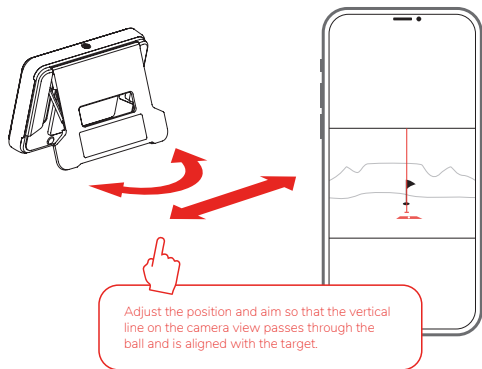


Aiming

- 1 Place the Mevo+ behind the ball position so that the camera aims along the chosen target line.

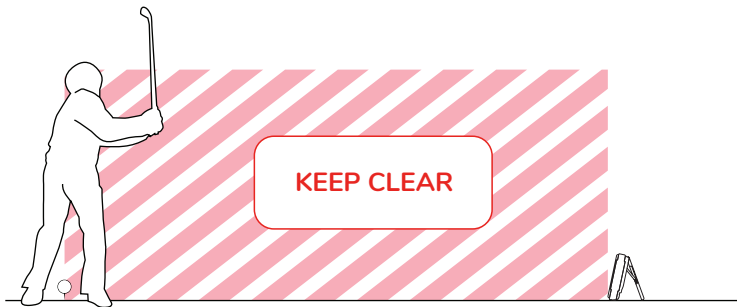


- 2 In the App, follow the instructions using the camera view to align.



Clearance

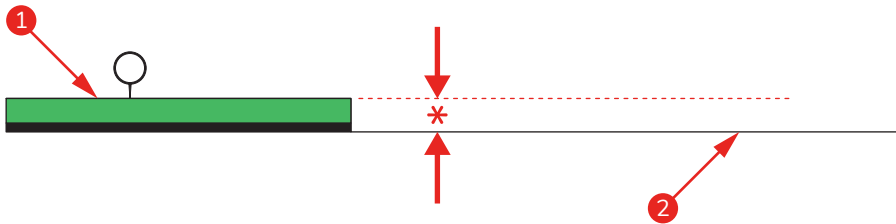
Keep area between Mevo+ and the ball position clear of any objects and people.

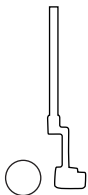


Tips

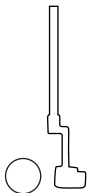
Best practice is to keep the unit on the floor with a level surface between the unit and the mat.

- ① Hitting Surface
- ② Ground surface
- * Maximum Height: 3" (76mm)



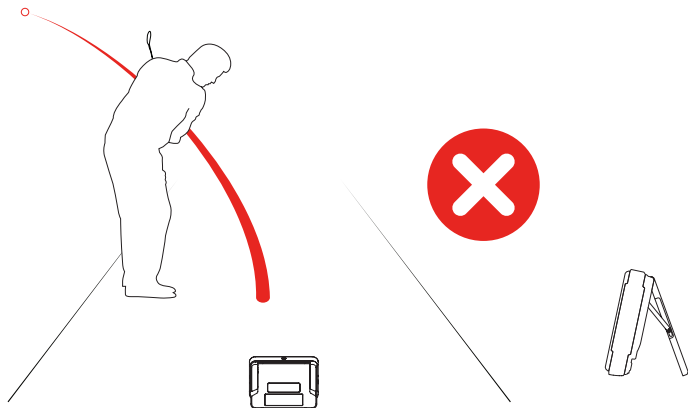


For putting, keep the ball and unit on an even flat surface.



For putting, chipping and hitting never raise the Mevo+ to match the ground level.

Extremely low and wide shots, and shots where the player is between the Mevo+ and the ball, might not register.



Indoor ball spin

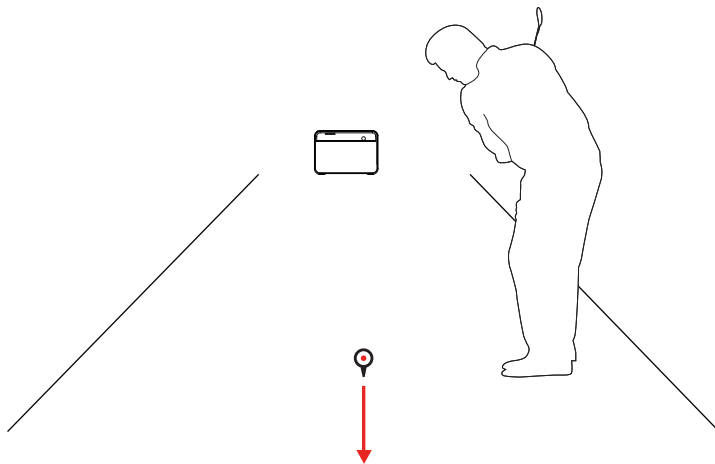
For the best spin accuracy indoors, place a reflective sticker on the ball.



To order additional stickers: go to [flightscope/product-category/accessories](https://flightscope.com/product-category/accessories)

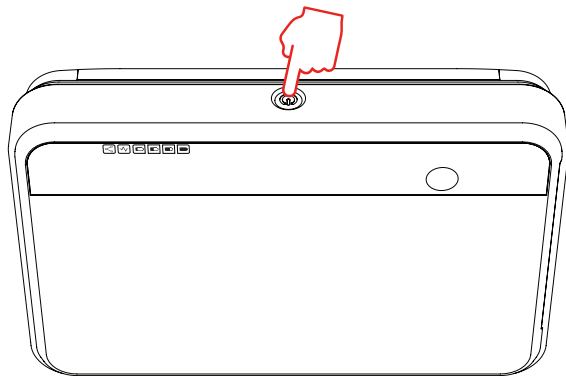
Tee the ball

Place the ball so that the sticker faces forward, directly away from the Mevo+.



**Sticker facing
towards target**

Switch off



Press and hold to turn off, unit will beep to confirm.
When all indicators are off, the unit is off.

Electronic noise

Mevo+ is designed to operate in most environments. However certain appliances and equipment can create noise that can interfere with resulting shots.

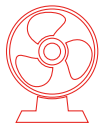
Some common noisy objects are:



aircon



fluorescent
lights



fans



tv's, laptops &
desktop computers
in front of the Mevo+

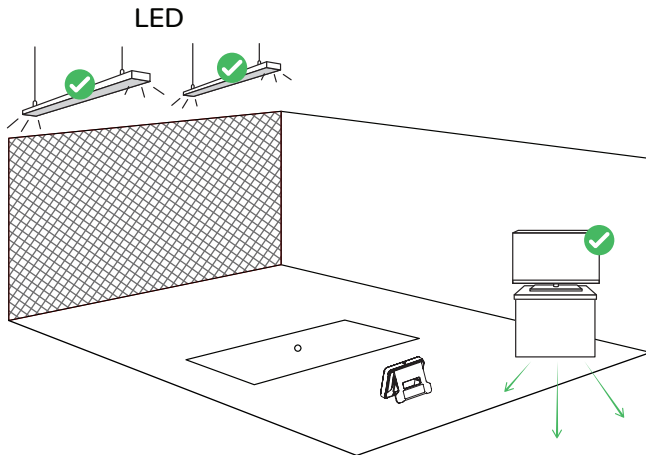


fridges

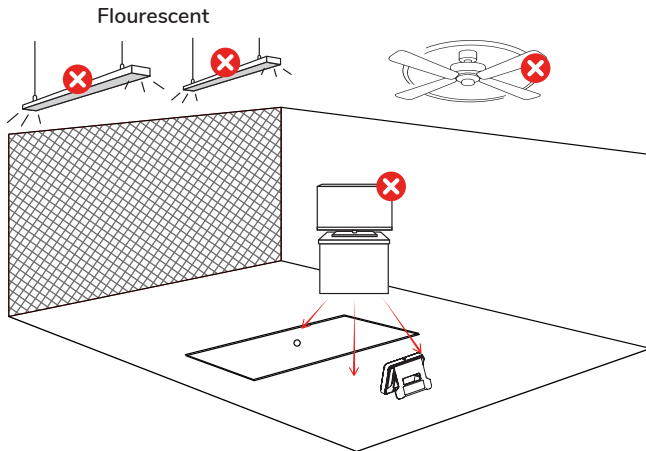


signal
towers

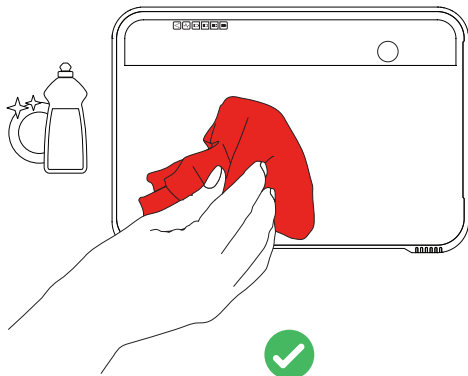
Keep area clear of possible noise interference. Make sure to move noisy electronic devices behind the unit.



Noisy electronic devices in front of the unit may cause poor tracking performance.



Care

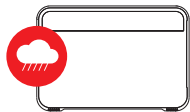


Clean with a damp cloth and light household detergent



Store in the case

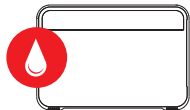
Avoid



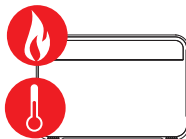
Moisture, including rain



Physical impact



Water immersion



Flames and
direct heat



Excessive weight loading



Solvent Chemicals

FAQ's and support



Below are the top 5 frequently asked questions.
For more FAQ's please refer to flightscopemevo.com/faq

1

1. Can Mevo+ be used indoors and outdoors?

Yes. Please check page 13 for indoor space requirements.

2

2. Does a reflective sticker need to be used?

Yes, for indoor use only. See page 18.

3

3. How is the video recorded?

The video is taken with your iPhone camera in the FS Golf application.
The radar is synchronized with your iPhone to automatically record and clip video of your swing with data overlay.

4

4. Can the built in camera be used for video?

The built in camera is used for target alignment only.

5

5. How long is the battery life?

The battery life is up to 2 hours on a full charge, and up to 1.5 hours in simulator play.



We recommend you browse the **FAQ's** on the **website** or check out the **mevo chat forum** before submitting a support question to the MEVO team.

If you need assistance please email our support team at
support@flightscopemevo.com

Technical specifications

transceiver

*operating frequency	24.08 - 24.16 GHz (nominal)
output power (EIRP)	24dBm +/- 3dBm USA 17dBm +/-3dBm EU

* Other frequencies ranges may apply in certain countries

electrical, physical, and general

operating temperature	0°C to 40°C / 32°F to 100°F
dimensions	6.8" x 1.2" x 4.6" / 174 x 31 x 118mm (W x D x H)
mass	1lb / 465g
power supply	5V DC +/- 5%; >2 A
battery	Rechargeable Li-ion Battery, 3.6V, 5000mAh, 18Wh
camera	5MP
data interfaces	USB 2.0



FlightScope[®]

Performance data you can trust