

# Softail Relocation Kit Installation Guide:



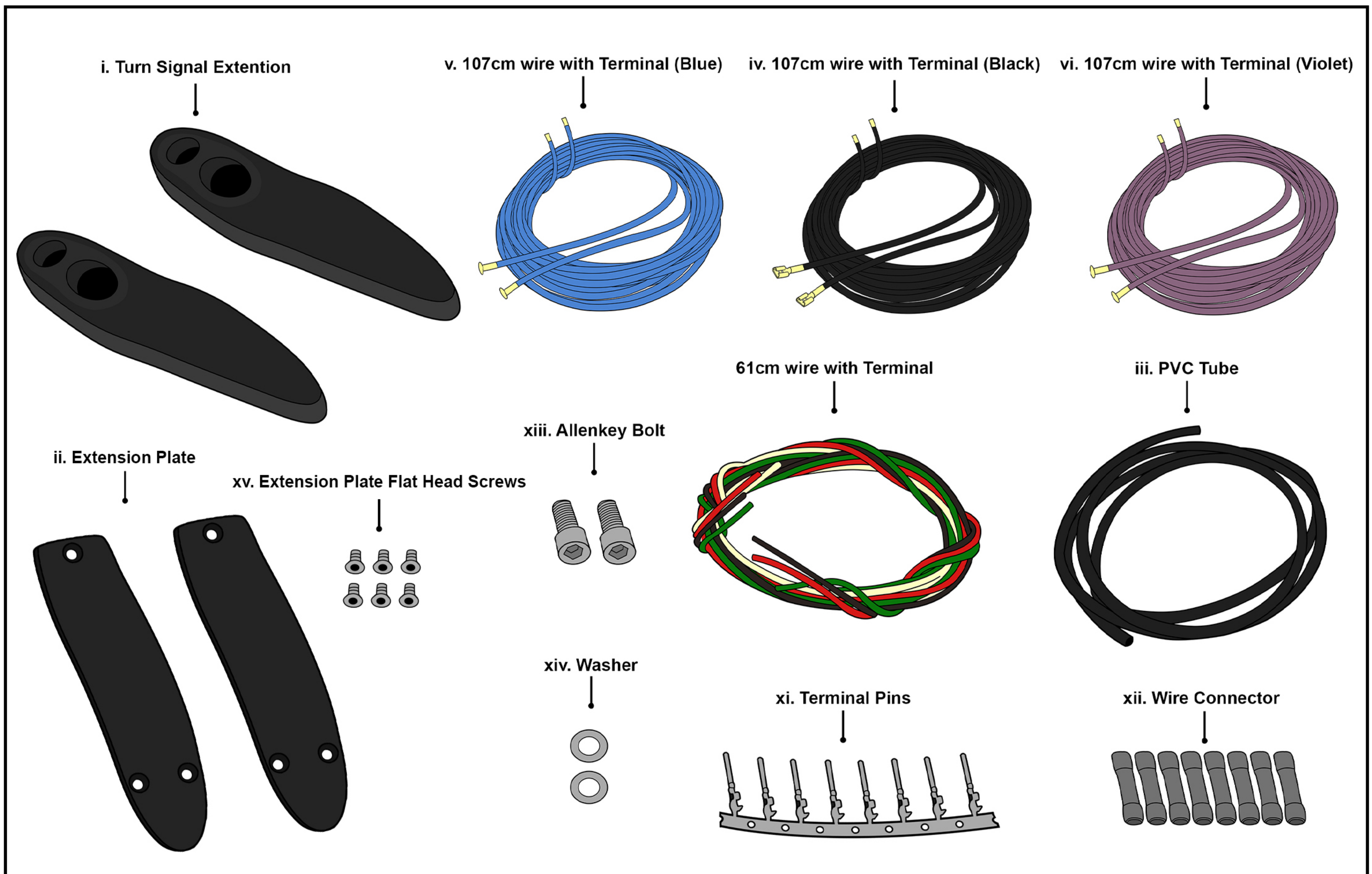
## Parts:

i	Turn Signal Extension	x2
ii	Extension Plate	x2
iii	PVC Tube	x1
iv	107cm wire with Terminal (Black)	x1
v	107cm wire with Terminal (Blue)	x1
vi	107cm wire with Terminal (Violet)	x1
vii	61cm wire extension (Black)	x1
viii	61cm wire extension (White)	x1
ix	61cm wire extension (Red)	x1
x	61cm wire extension (Green)	x1
xi	Terminal Pins	x8
xii	Wire Connector	x8
xiii	Allenkey Bolt	x2
xiv	Washer	x2
xv	Extension Plate Flat Head Screws	x6

## Tip:

- i For correct installation, we recommend completing the installation on one side before proceeding to the other side.

## Parts Diagram:



## Installation:

### Note:

- To remove OEM parts, please check the Motorcycle Service Manual

### Step 1:

Remove the main fuse, the seat, the rear turn signal, and the turn signal harness from the fender support.

### Note:

- For a proper installation, complete one side before moving to the other side
- The left Turn Signal License Plate mounting support is positioned between the Turn Signal Extension and Turn Signal Support.

### Step 2:

#### Right Side:

- Starting with the right side, run the Turn Signal Wire through the hole of the Turn Signal extension(l) and exit past the threaded hole.

Refer to Fig 1.

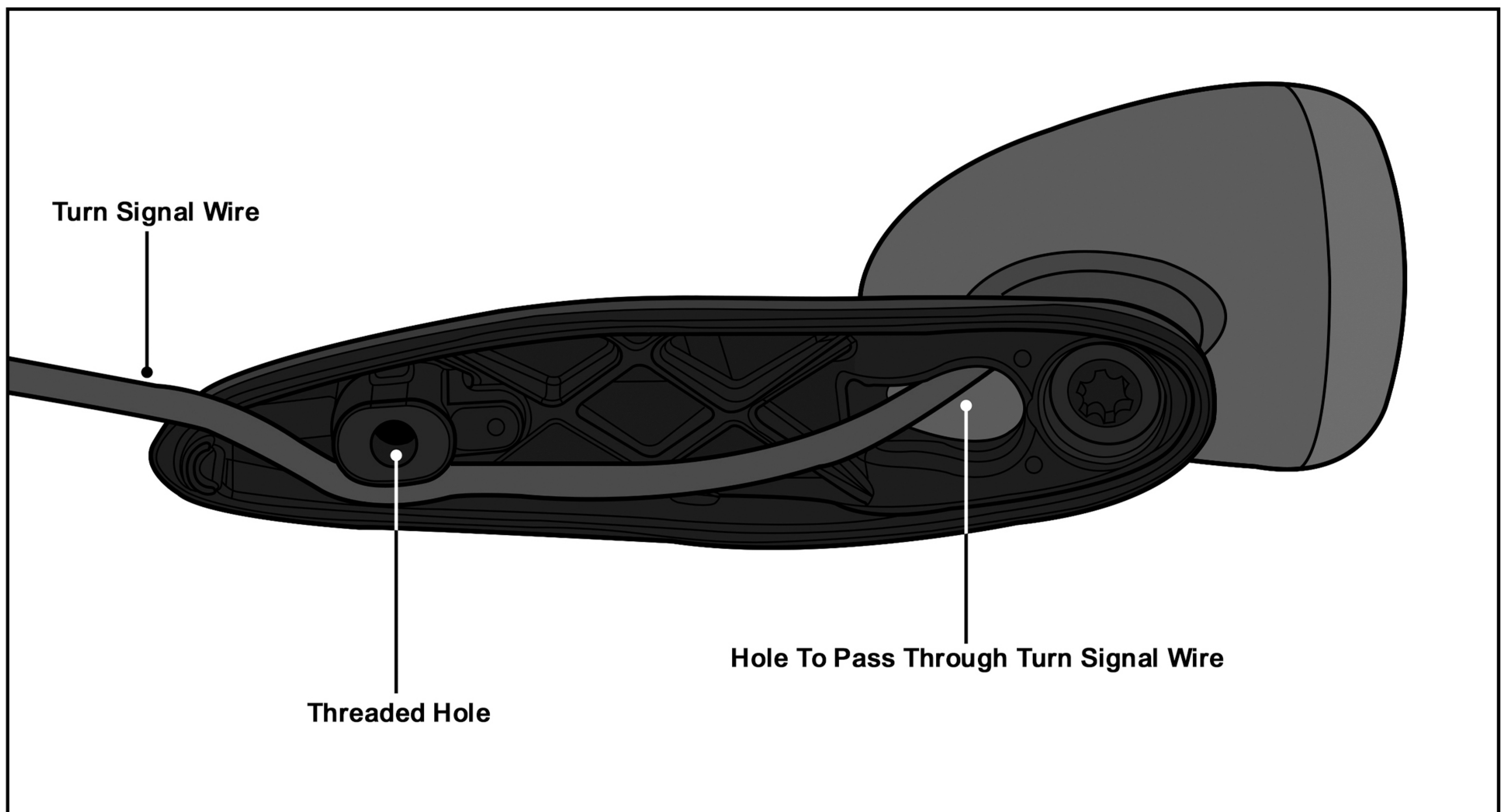
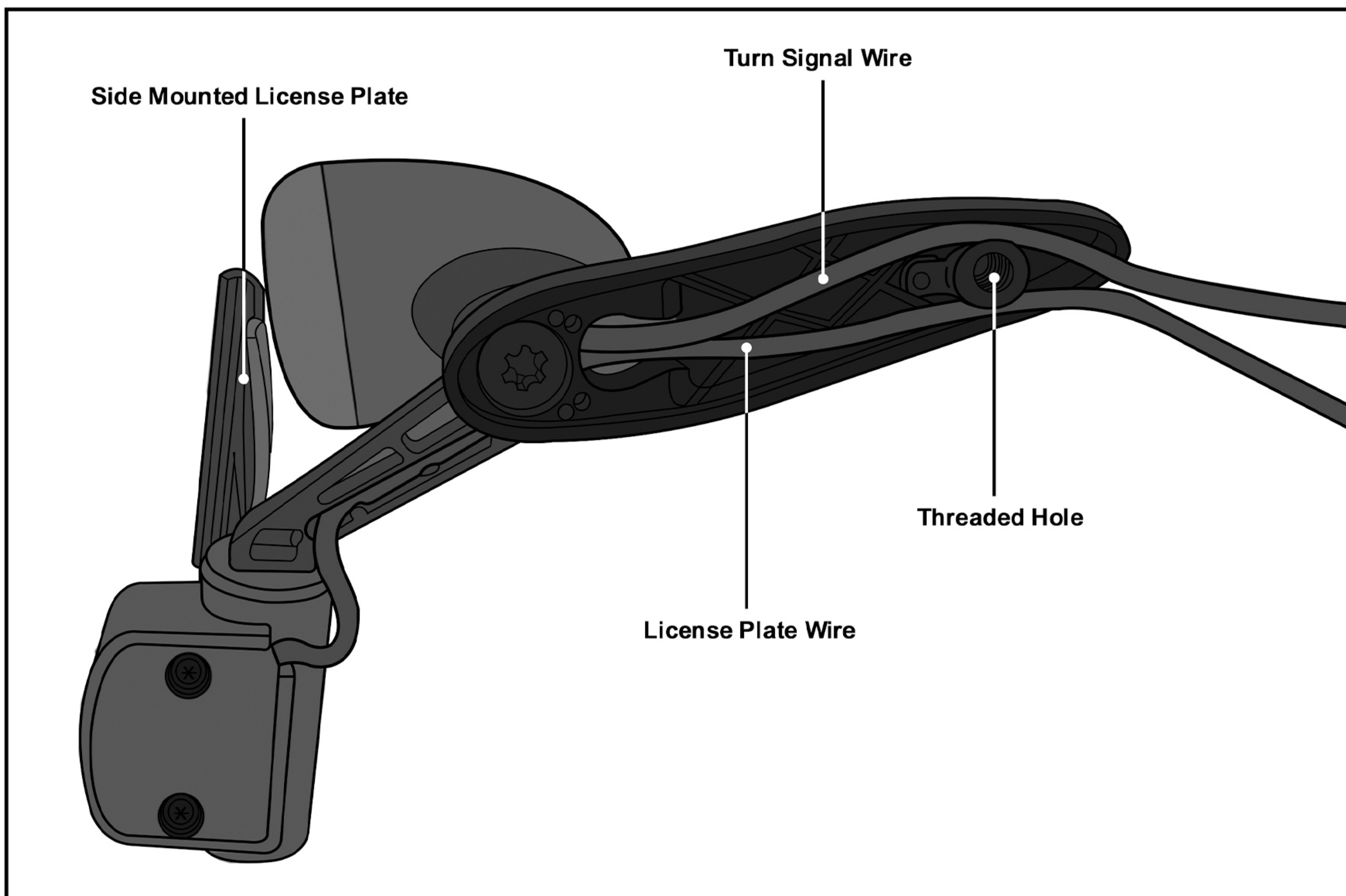


Fig 1. Right Turn Signal Extension

#### Left Side:

Run the Turn Signal Wire and License Plate Wires through the Turn Signal extension and exit past the threaded hole. Refer to Fig 2.



**Fig 2. Left Turn Signal Extension**

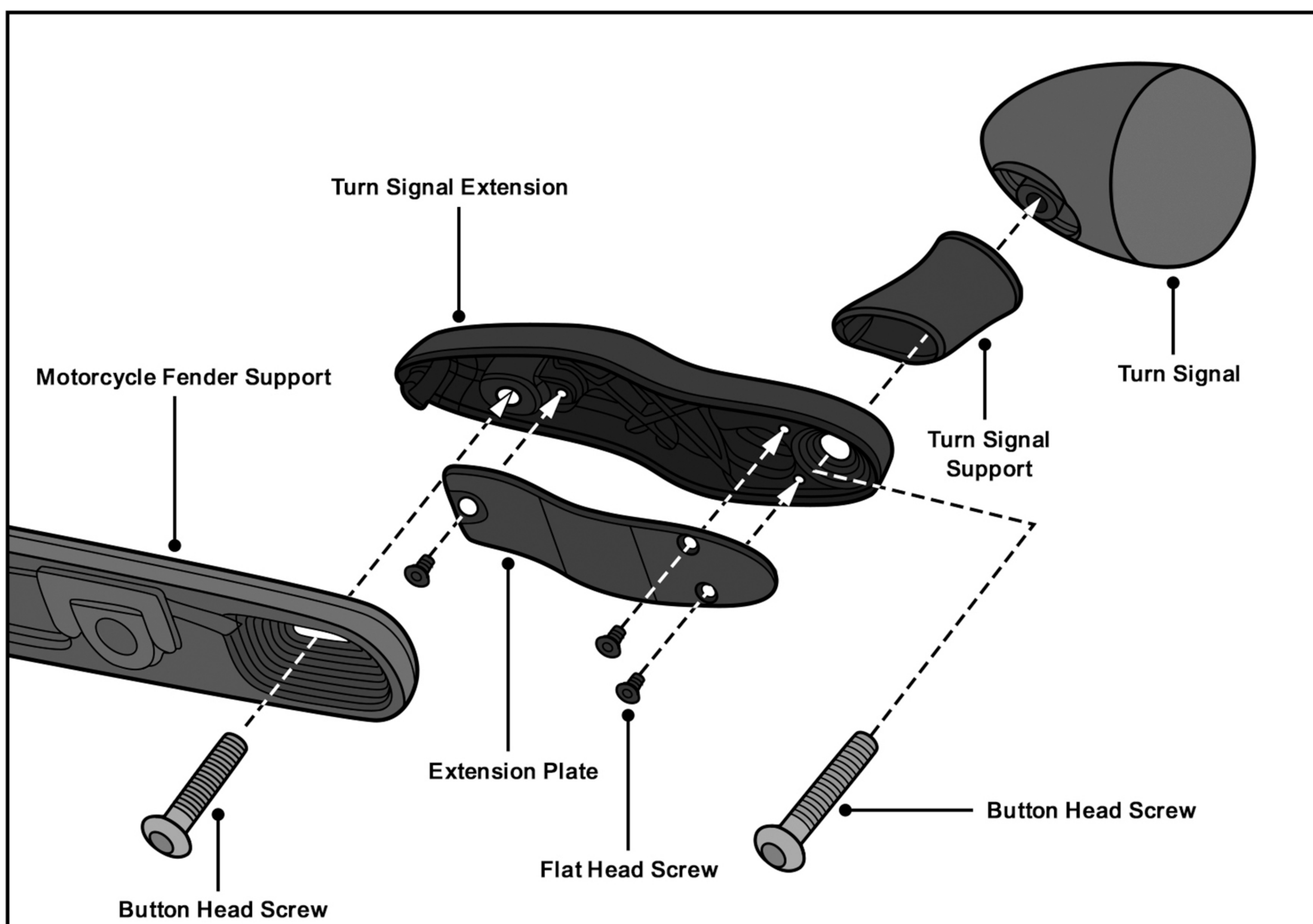
**Note:**

- The left Turn Signal license plate mounting support is positioned between the Turn Signal Extension and Turn Signal Support.
- If you don't have a Left Turn Signal License Plate, you can follow the installation step on the right side.

**Step 3:**

**Right Side:**

- Attach and assemble the OEM Turn Signal and Turn Signal Support to the provided extension kit (I). Refer to Fig 3.



**Fig 3. Motorcycle Turn Signal Assembly (Right Side)**

## Left Side:

Attach and assemble the OEM Turn Singal, Turn Signal Support, and Turn Signal License Plate to the provided extension kit (I). Refer to Fig 3.

## Step 4:

Attach the extension plates (II) to the Turn Signal Extensions (I) for both right and left sides, using the provided Flat Head screws (XV).

Refer to Fig 3. and run the wires through the fender support hole.

## Step 5:

Install the Turn Signal Extension (I) to the motorcycle fender using the provided Allenkey bolts (XIII). for both the left and right sides.

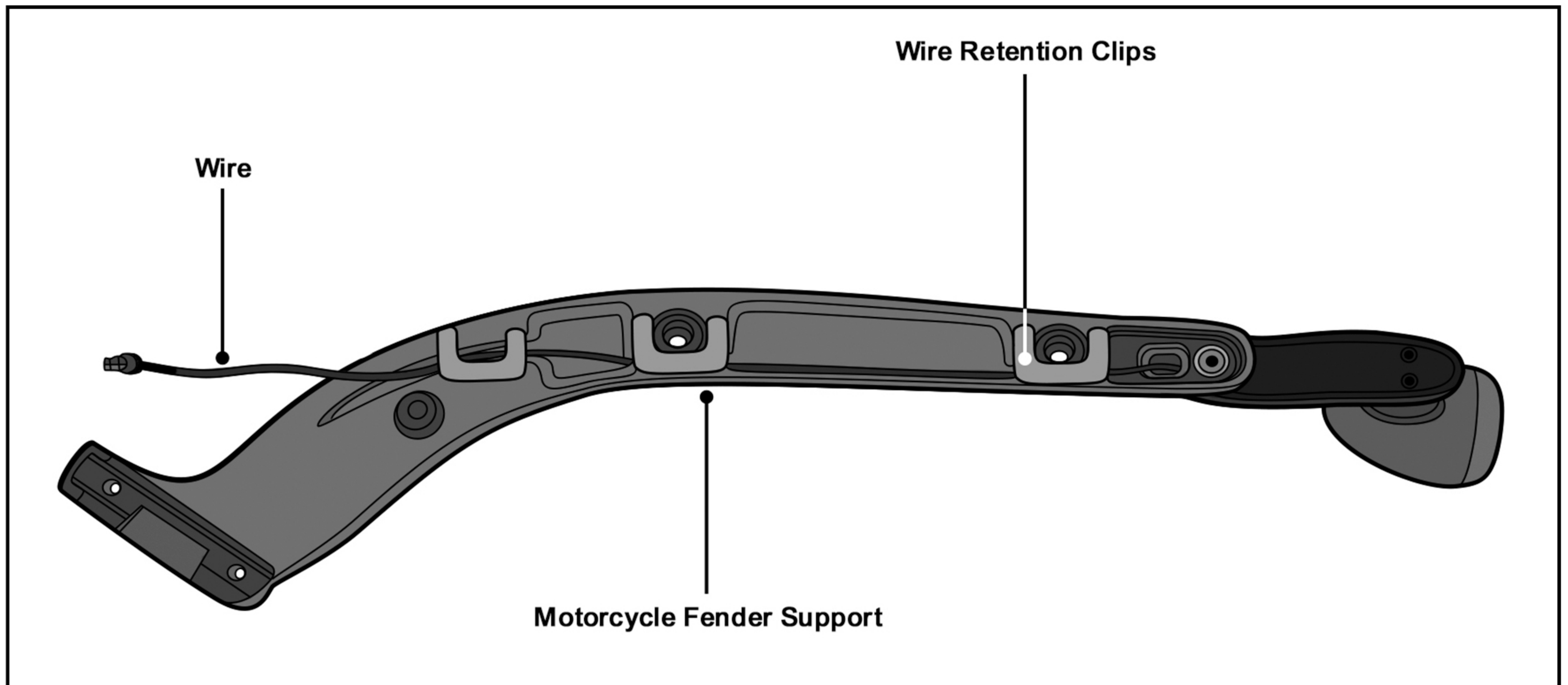
Refer to Fig 3.

## Step 6:

Routing turn signal wire through the fender support.

## Right Side:

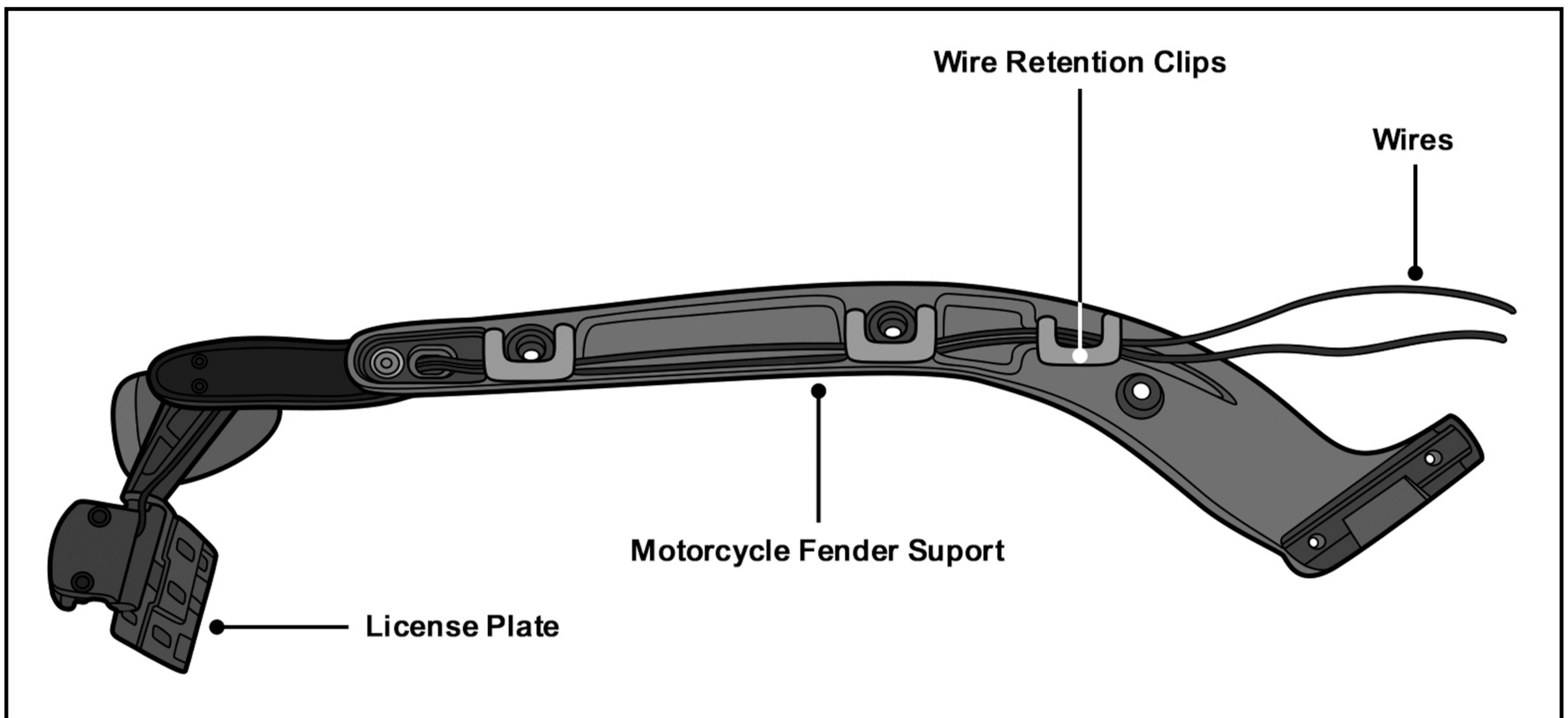
Use wire retention clips to run the wire through the fender support. Refer to Fig 4.



**Fig 4. Right Motorcycle Fender Support**

## Left Side:

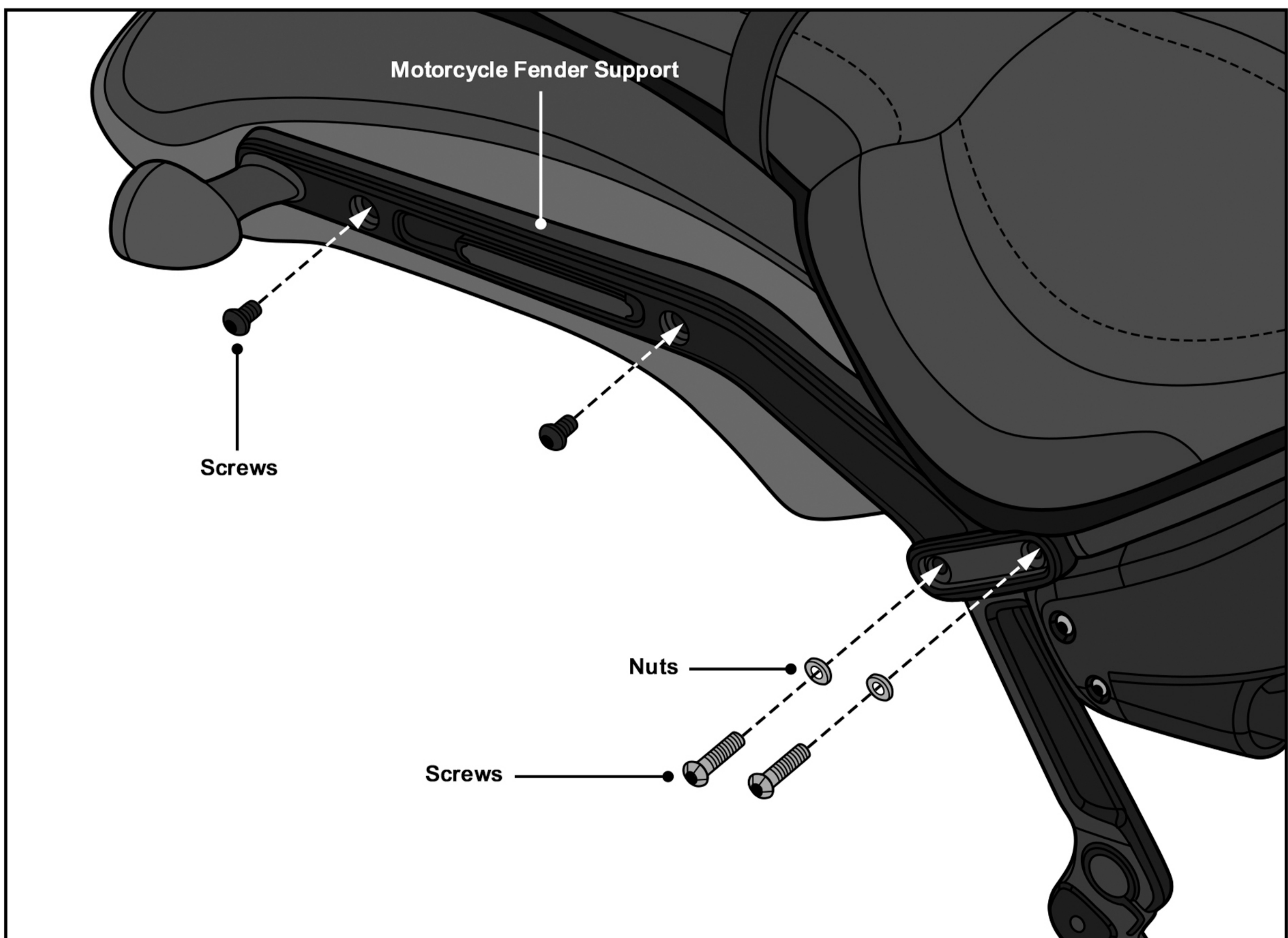
Use wire retention clips to run turn signal and license plate wires through fender support. Refer to Fig 5.



**Fig 5. Left Motorcycle Fender Support**

**Step 7:**

Install motorcycle fender support using OEM screws and washers. Refer to Fig 6.



**Fig 6. Installing the right motorcycle Fender support**

Repeat the above step for the left side.

**Connecting wires**

Follow the motorcycle OEM service manual to complete wiring using the provided wire kit.

# Congratulations! Your Softail Turn Signals are extended.

## Warnings!

- Do not install if any of the mounting hardware is damaged or impaired.
- If you have any questions or concerns about the installation, call Viking Bags or consult your local mechanic.
- Ensure no part of the bag constructs any of the moving parts of the bike.
- Viking Bags is not liable for any damage or malfunctions caused to your motorcycle during the installation process.
- Improper loading can cause vehicle handling problems leading to death or severe injury.
- Periodically check the bolts on your bike for tightness.