

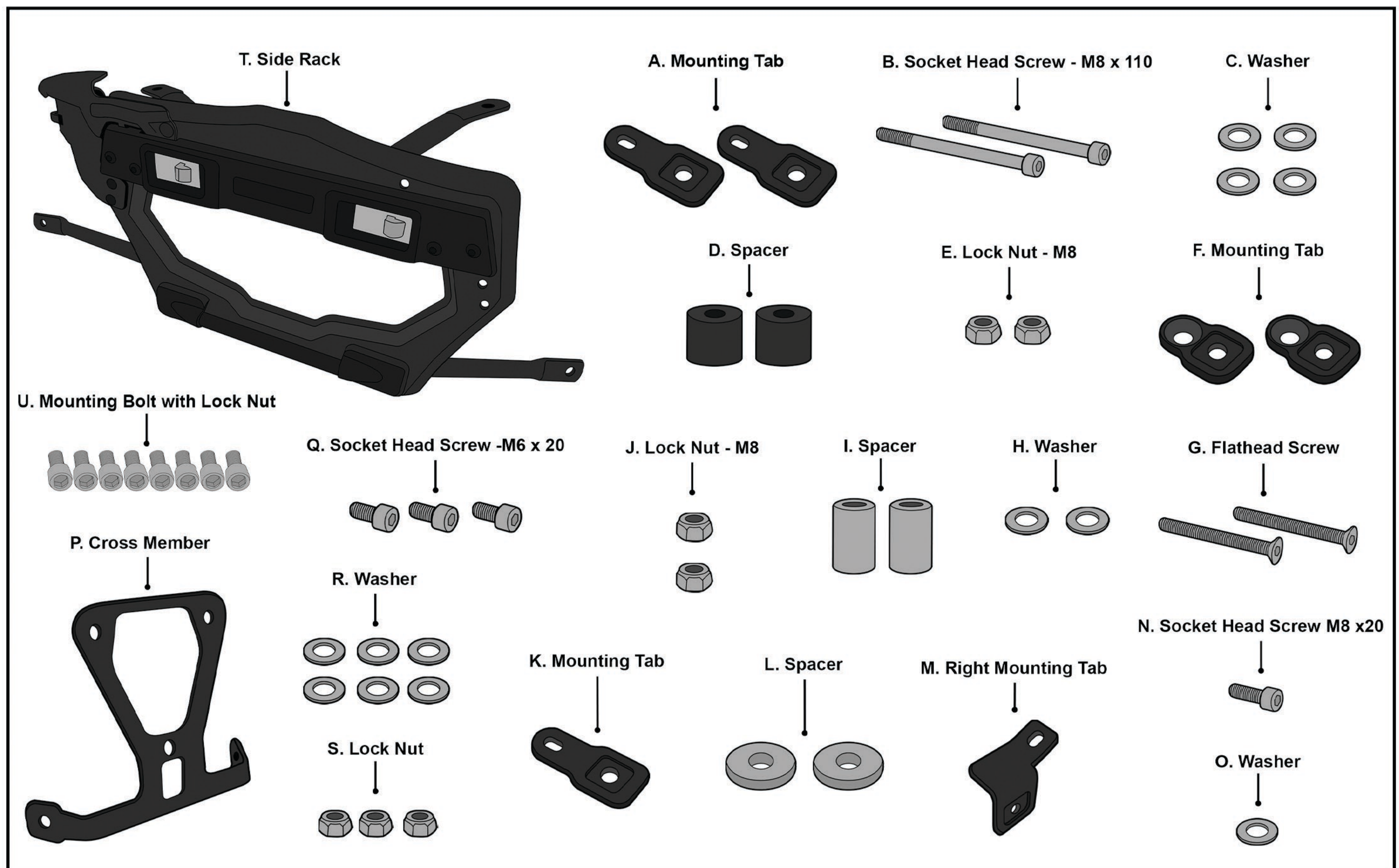
# Viking Apex Aluminium Side Case Installation Guide For Triumph Tiger 900:



## Parts:

A	Mounting Tab	x2	L	Spacer	x2
B	Socket Head Screw - M8 x 110	x2	M	Right Mounting Tab	x1
C	Washer	x4	N	Socket Head Screw - M8 x 20	x1
D	Spacer	x2	O	Washer	x1
E	Lock Nut - M8	x2	P	Cross Member	x1
F	Mounting Tab	x2	Q	Socket Head Screw - M6 x 20	x3
G	Flathead Screw	x2	R	Washer	x6
H	Washer	x2	S	Lock Nut	x3
I	Spacer	x2	T	Side Rack	x2
J	Lock Nut - M8	x2	U	Mounting Bolt with Lock Nut	x8
K	Mounting Tab	x1			

## Parts Diagram:



## Parts List

## Installation Instructions:

### Step 1:

Take off the front and rear seats and remove the OEM screws shown in Figure 1. Disconnect the plug and remove the control unit from your motorcycle.

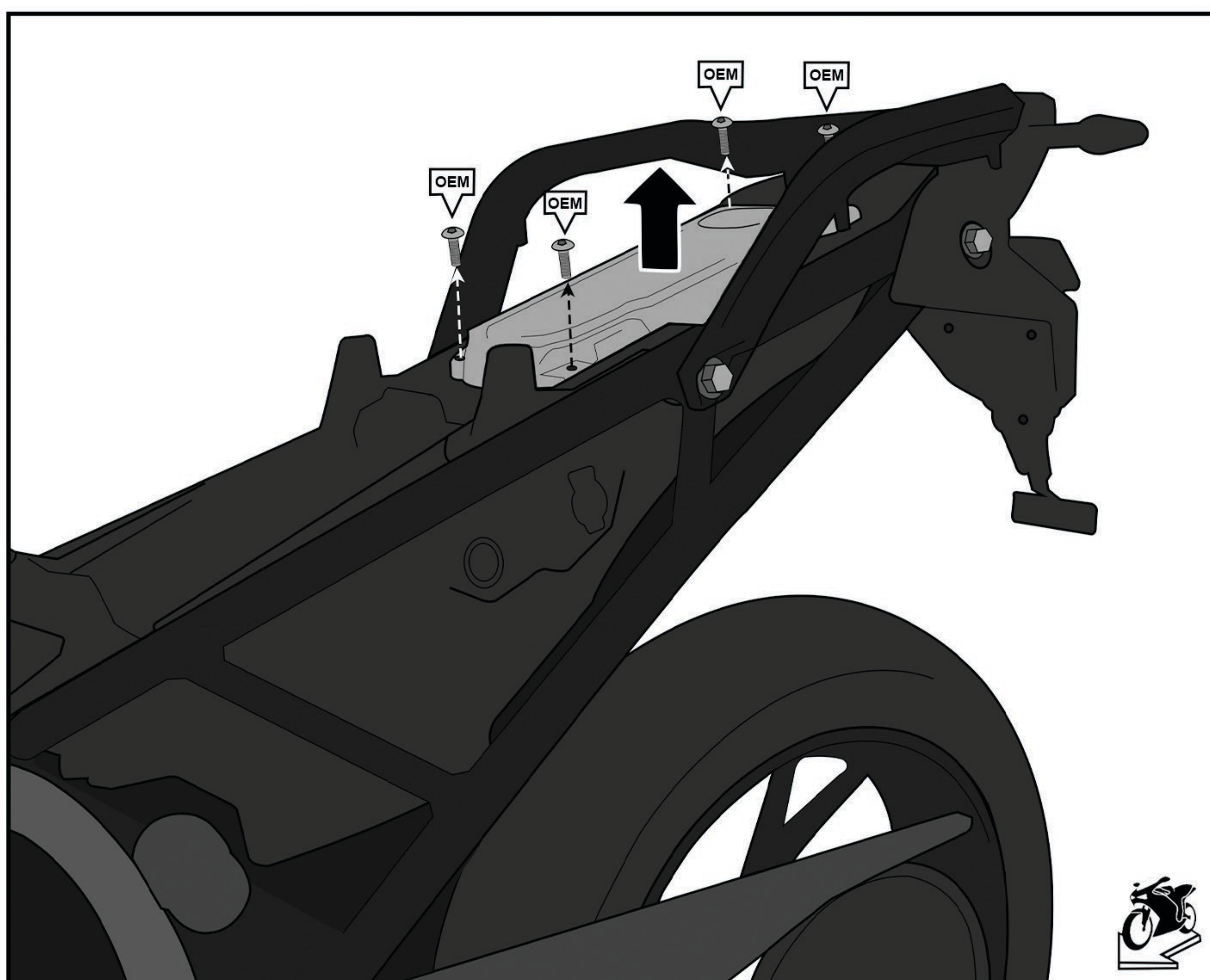


Fig 1. Remove the OEM Screws

### Step 2:

Remove the left passenger foot rests by removing the 2 screws holding it in place.

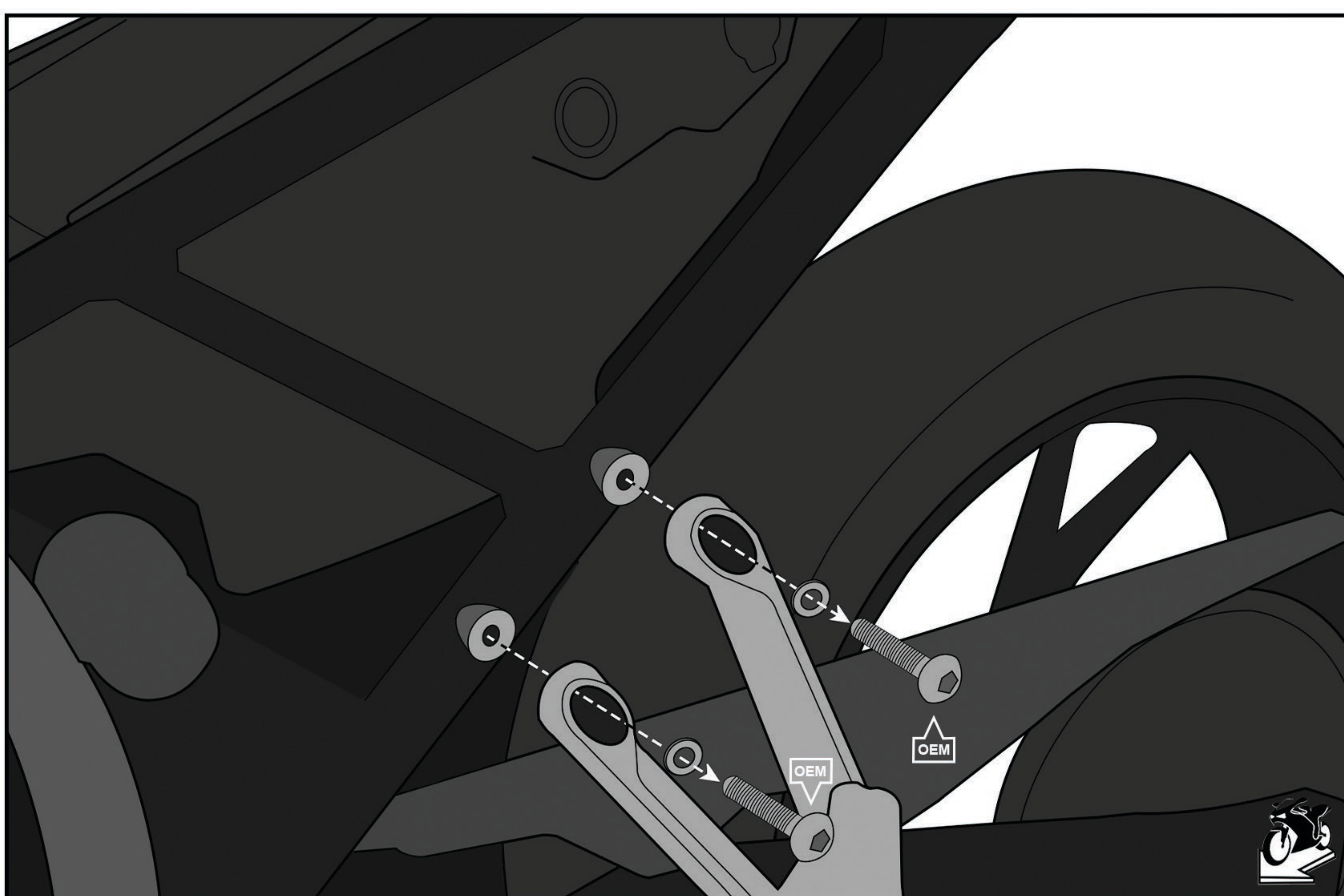


Fig 2. Remove the Left Passenger Foot rest

### Step 3:

Remove the 2 screws and nuts on the tail of the bike as shown in Figure 3.

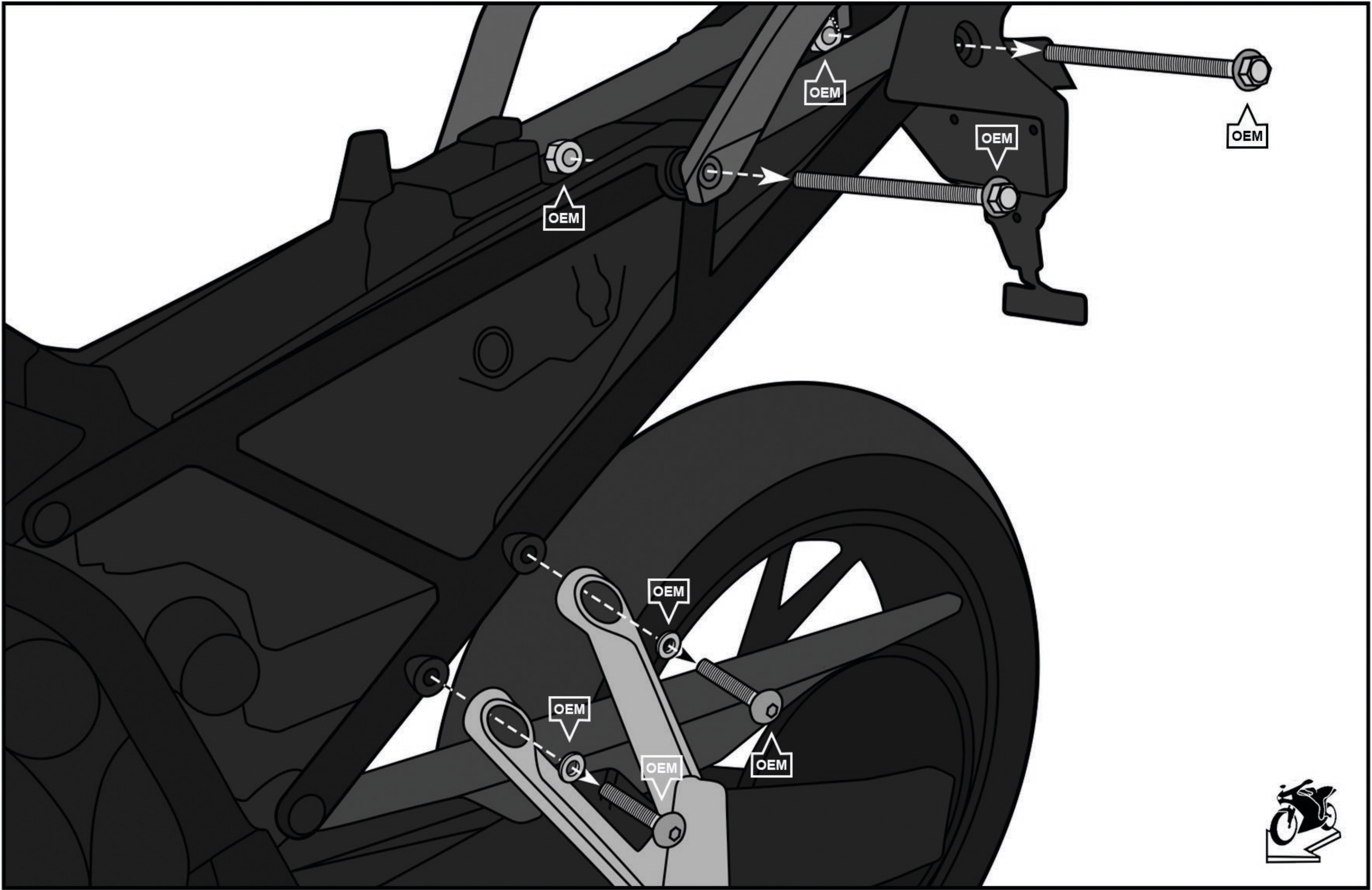


Fig 3. Remove the Tail Screws

### Step 4:

Attach the mounting tabs for the left and the right side as shown in Figure 4. Use a medium thread locker to secure the fasteners.

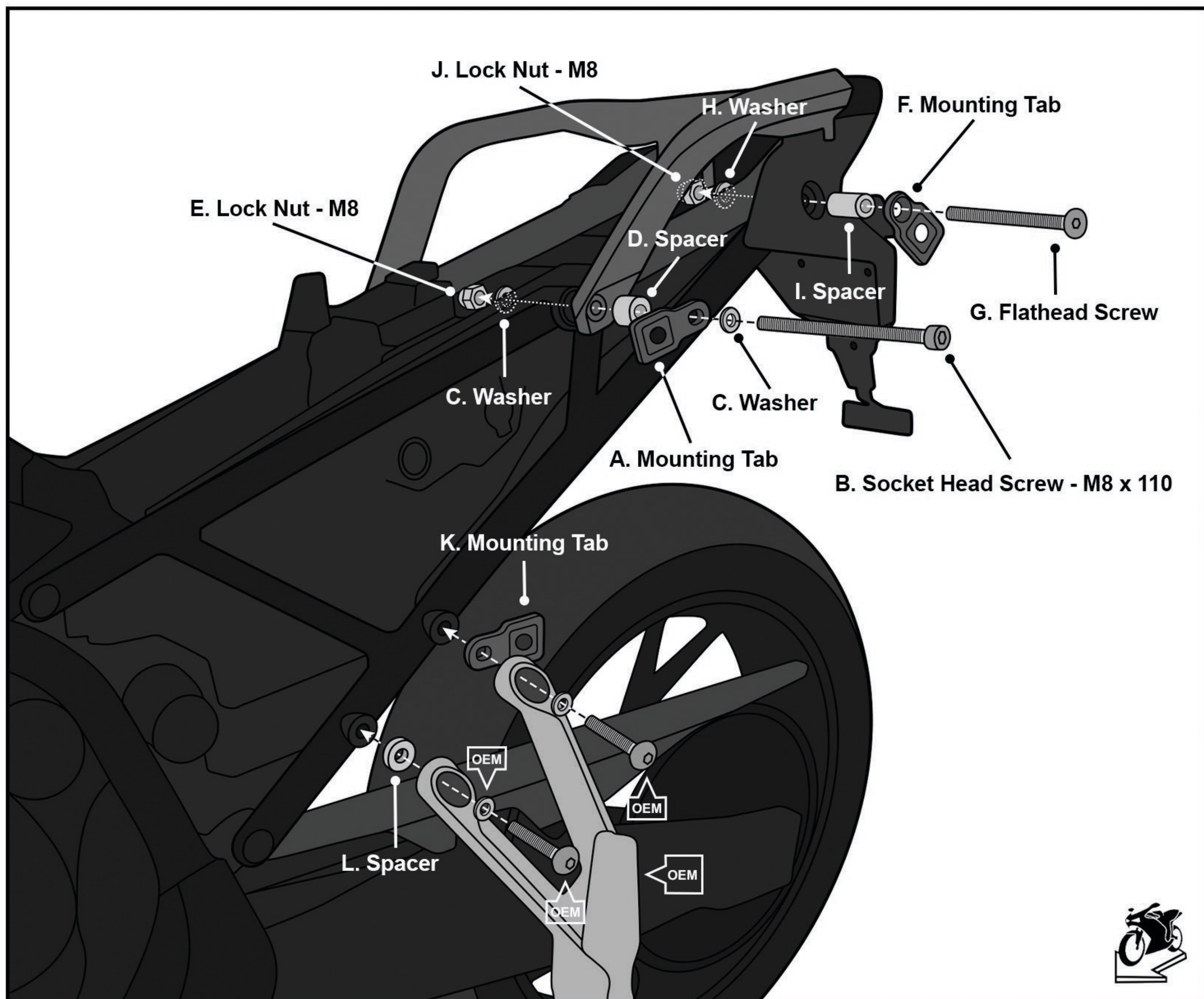


Fig 4. Installing the Mounting Tabs

## Step 5:

Attach the crossmember to the license plate assembly as shown in figure 5.

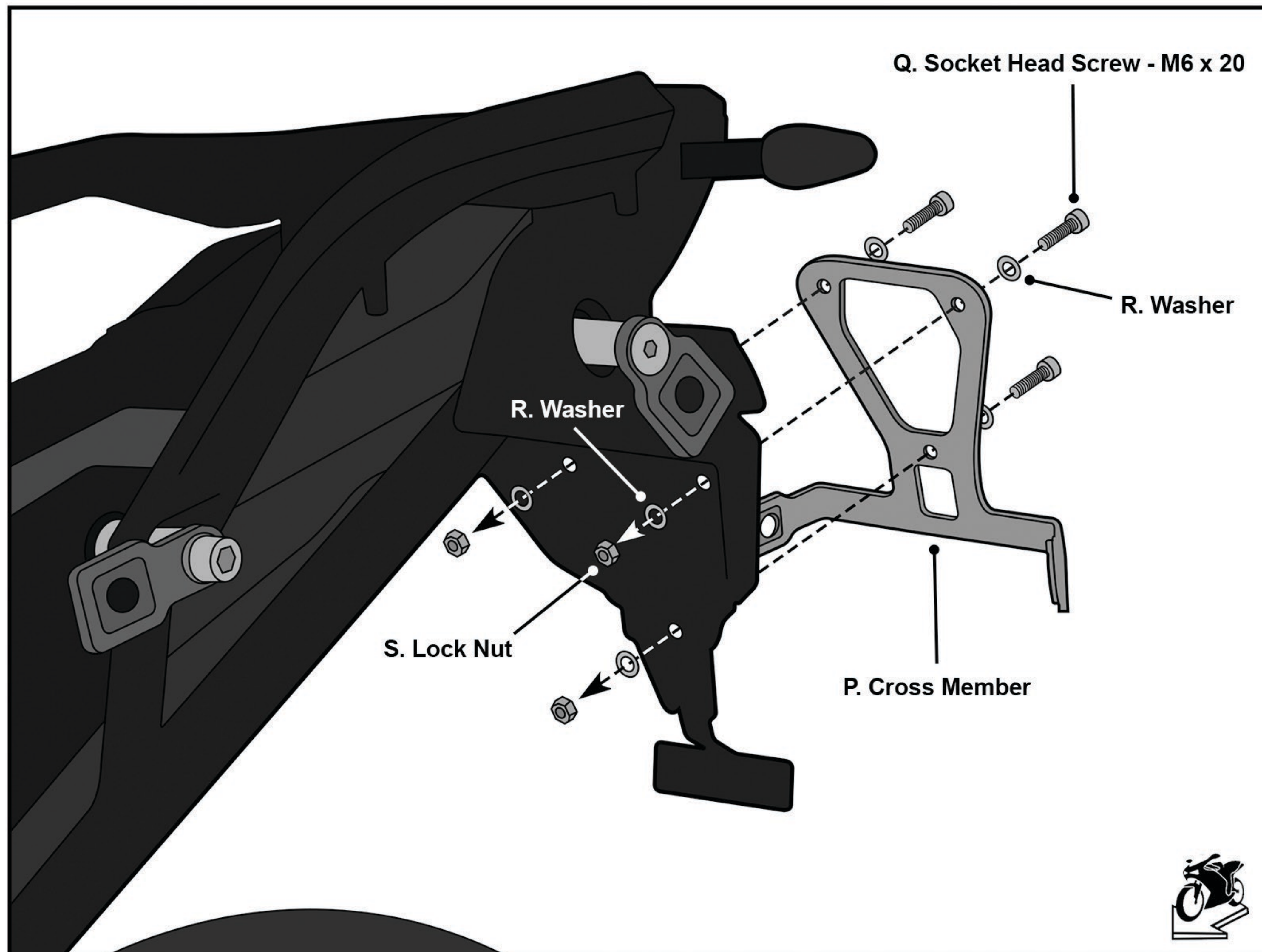


Fig 5. Install The Cross Member

## Step 6:

Reconnect the plug and reinstall the control unit using the OEM screws. Replace the passenger pillion and the seat back.

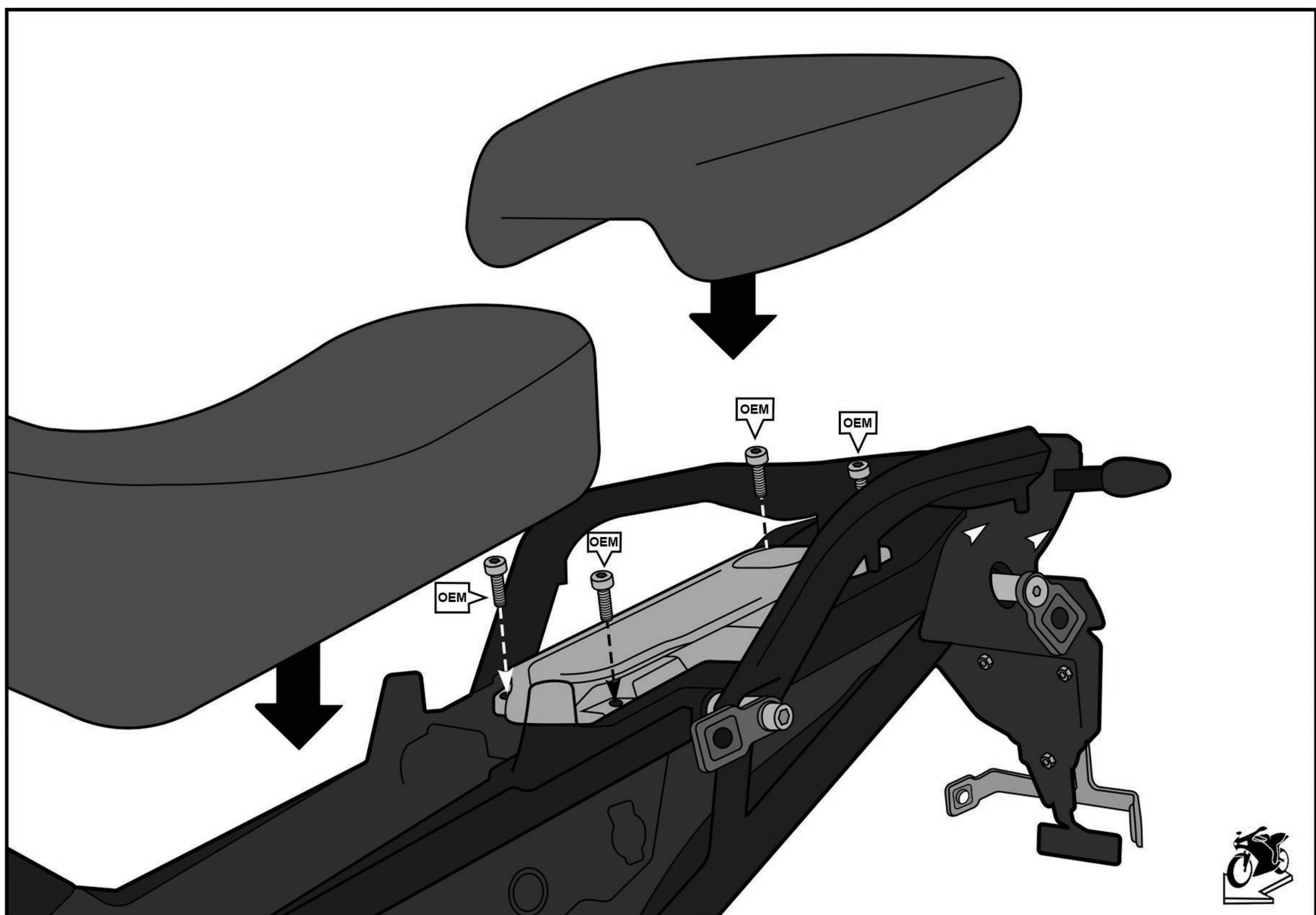
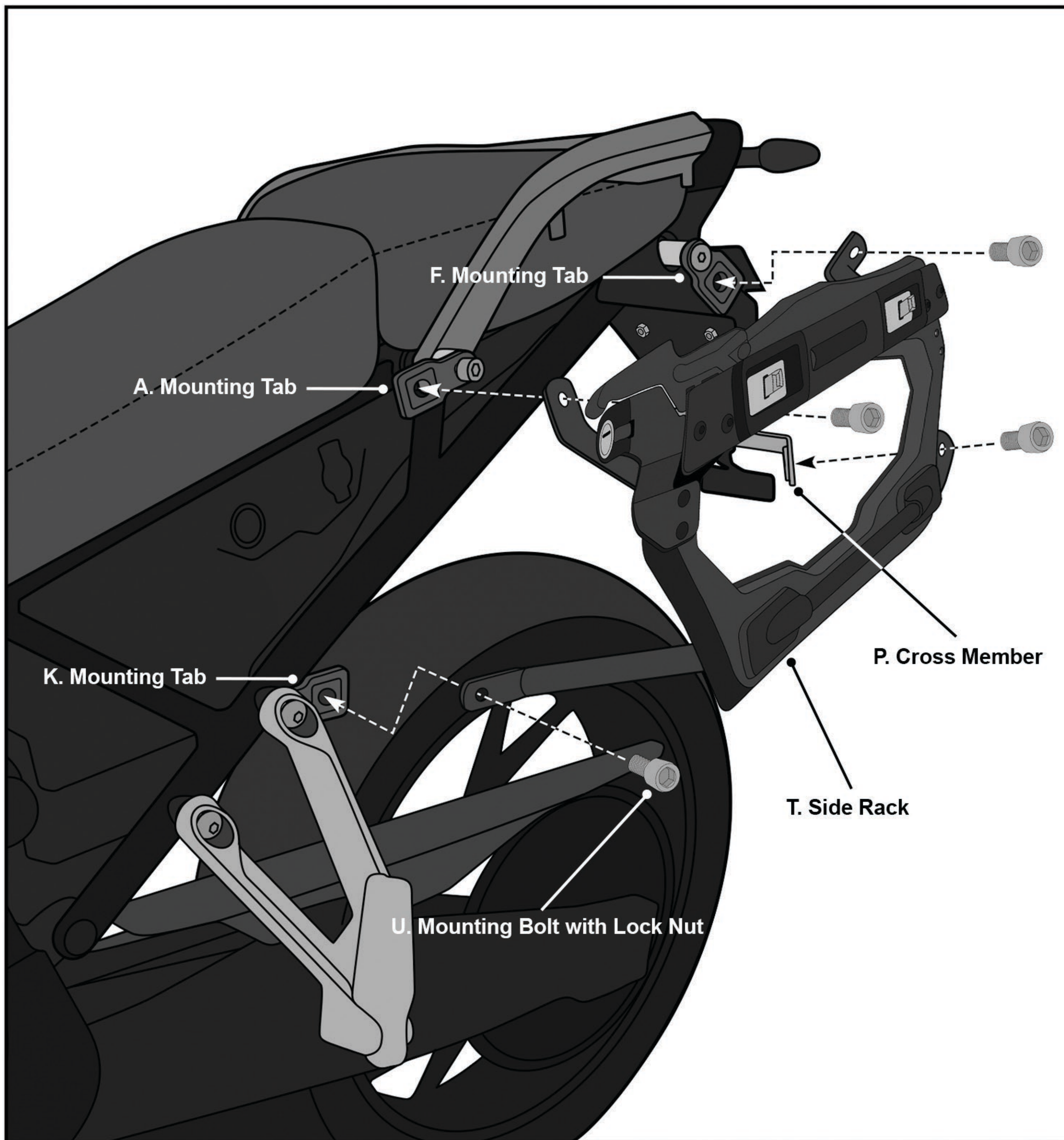


Fig 6. Reinstall The Control Unit

## Step 7:

Attach the side carrier to the mounting tabs using the provided mounting bolts and nuts [U]. Do not fully tighten until the side rack is attached to the bike using all the mounting tabs and the cross member [A, F, K, M, P]. Once the side rack is attached using all the mounting tabs, fully tighten all the mounting bolts to 8 n.m of torque.



**Fig 7. Attaching the Mounting Brackets**

## Step 8:

Place the side case against the rack so the channel on the back of the case sits on the rod on the bottom rod on the side rack. Pull the lever on the bracket and push the bag until you hear the click. Push the lever down.

The side racks come with locks to secure your bags against theft. Use the included key to lock the side case to the side rack when leaving your bike unattended.

# **Congratulations, You have successfully installed the Viking Apex Aluminium Side Case and now you are ready to ride.**

## **Warnings!**

- Do not install if any of the mounting hardware is damaged or impaired.
- If you have any questions or concerns about the installation, call Viking Bags or consult a certified motorcycle mechanic.
- Ensure no part of the bag obstructs any of the moving parts of the bike.
- Viking Bags is not liable for any damage or injury caused because of improper installation or use of the product.
- Improper loading can cause vehicle handling problems leading to death or severe injury.
- Periodically check the bolts on your bike for tightness.