

Viking Renegade Engine Guard Installation for harley Softail:



Parts List:

A	Engine Guard	x1
B	Hex nut, 5/16	x1
C	Flat washer, 5/16	x2
D	Pan Head Screw - 5/16-18 x 7/8 inches	x1
E	Locknut - 3/8 -16 inches	x2
F	Flat Washer, 3/8	x2
G	Torx Screw, 3/8 -16 x 1-1/4 inches	x1

Installation Instructions:

Step 1:

Ensure that the clutch cable clip protrudes outwards as shown in Figure 1. If it does not protrude outwards, rotate it 180 degrees by loosening the screw holding the clip in place. Tighten after rotating.

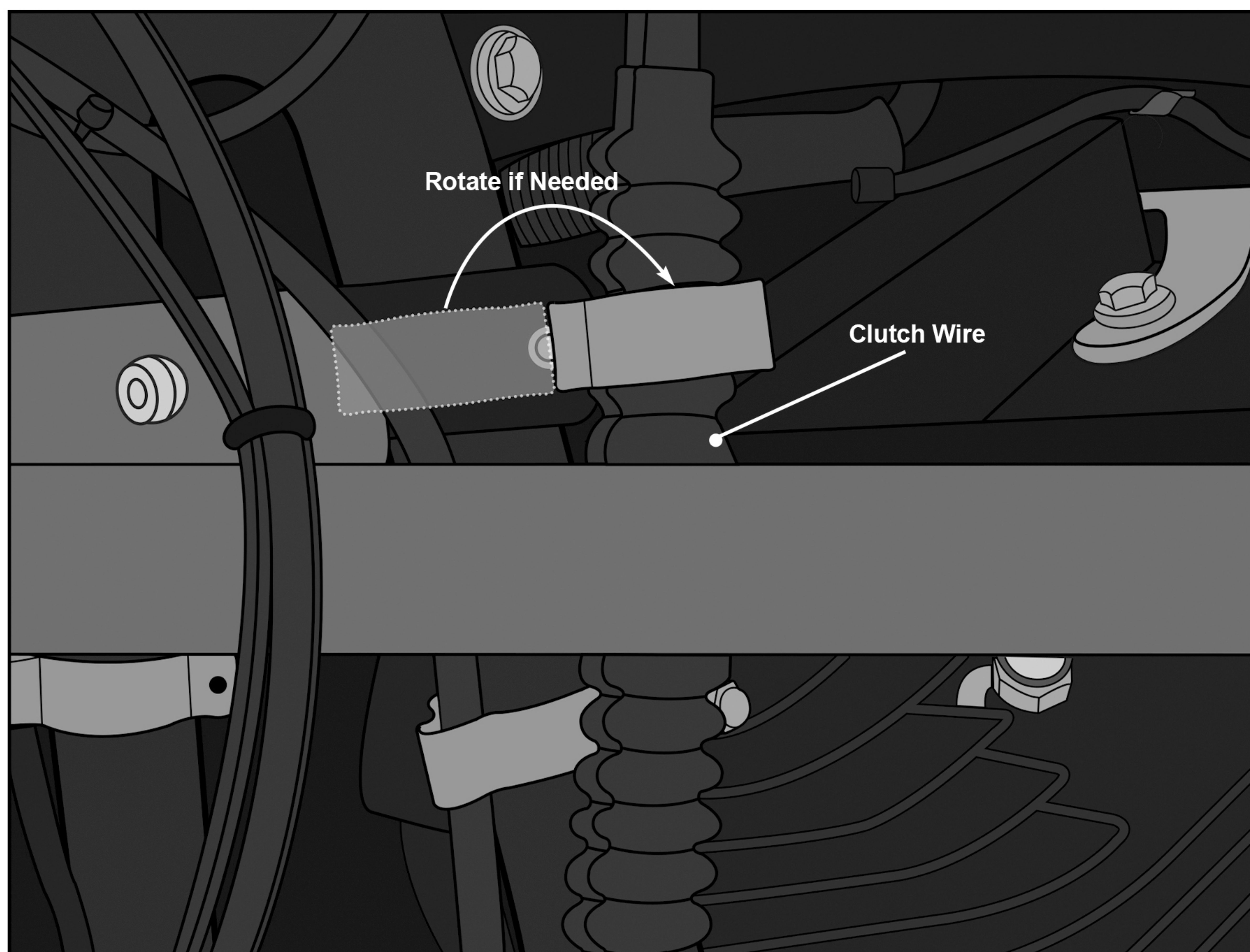


Fig 1. Clip in correct position

Step 2:

Place the engine guard against the front of the bike, lining up the hole in the top center of the guard with the hole in the cross brace located between the front down-tubes.

Step 3:

Using the washer (C), insert the screw (D) through the holes from the front. Pass the screw through a second flat washer and tighten the screw using the provided nut (B). See Figure 2.

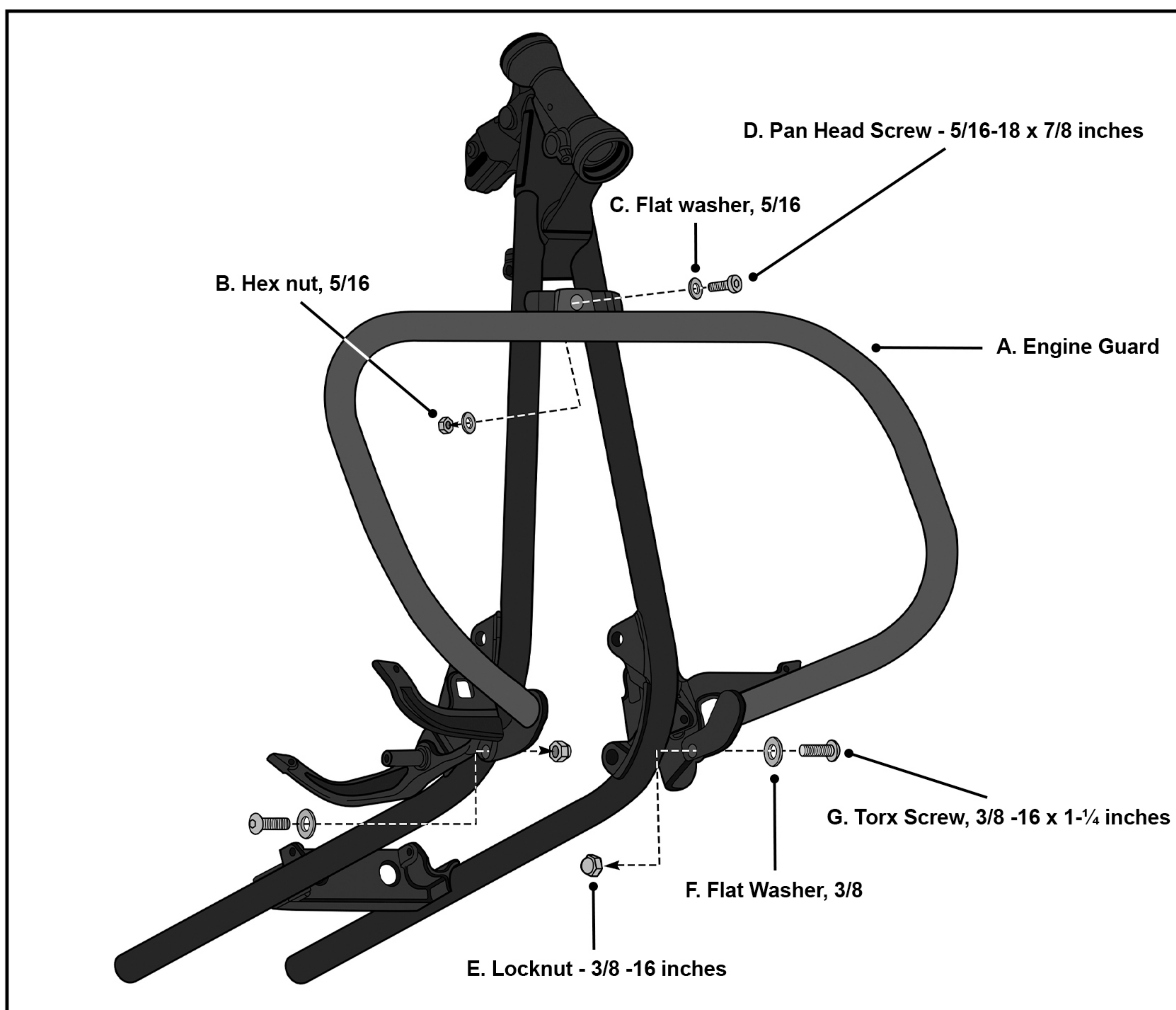


Fig 2. Engine Guard Installation

Step 4:

Attach the engine guard to the right footboard using the supplied screw (G), washer (F) and nut (E). Repeat for the left side and tighten both the left and right screws to 44 N.m of torque.

Step 5:

Tighten the top screw to 25 N·m.

Warnings!

- Do not install if product is damaged or any items in the parts list are missing
- Seek guidance from a certified motorcycle mechanic in case of any confusion
- No part of the engine guard must restrict free movement of the handlebar or obstruct normal function of the motorcycle
- Viking Bags is not responsible for any damage caused by improper installation or misused of the product.