

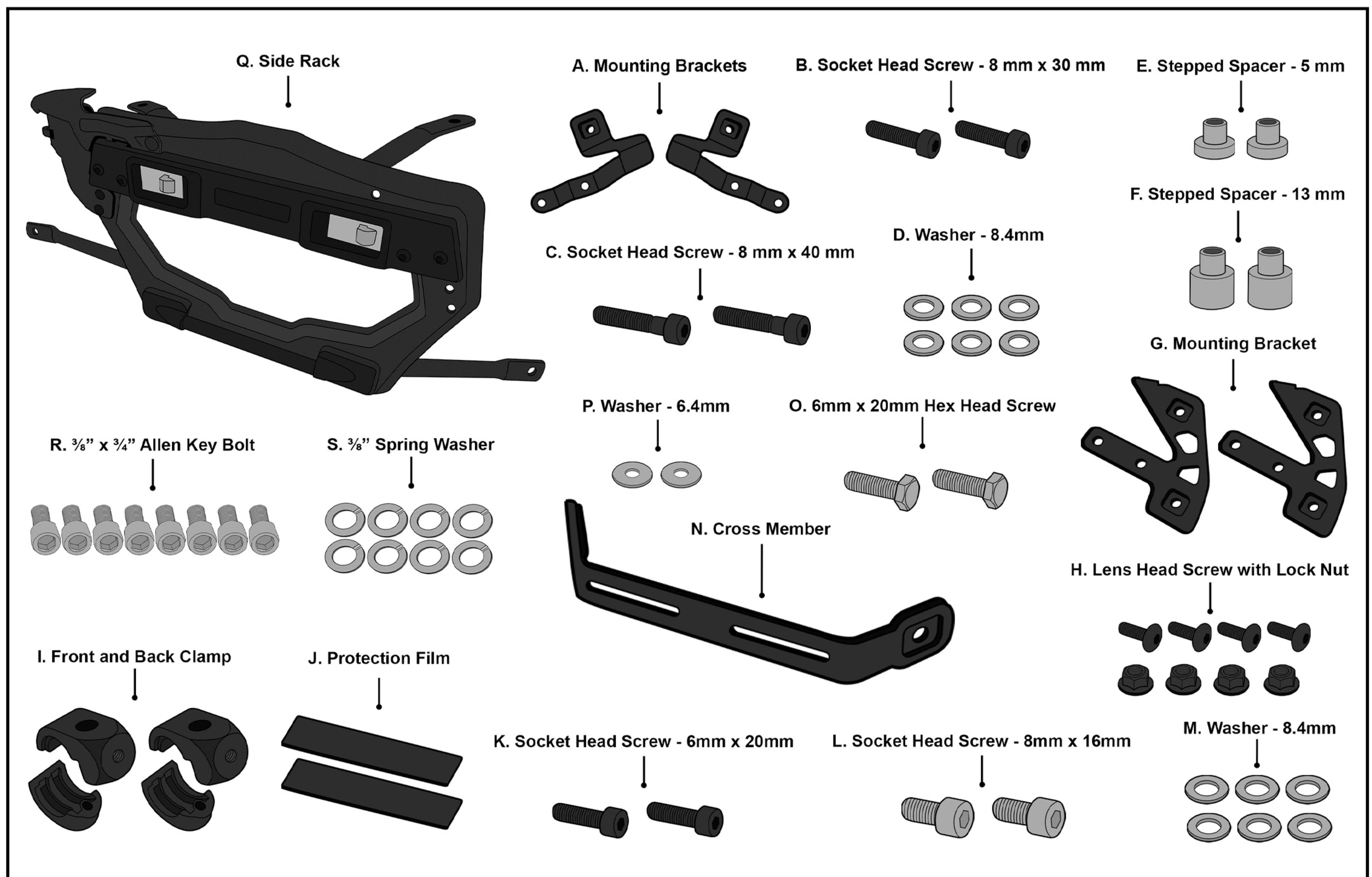
Viking Apex Aluminium Side Case Installation Guide For Kawasaki Versys 1000:



Parts:

A	Mounting Brackets	x2	K	Socket Head Screw - 6mm x 20mm	x2
B	Socket Head Screw - 8 mm x 30 mm	x2	L	Socket Head Screw - 8mm x 16mm	x2
C	Socket Head Screw - 8 mm x 40 mm	x2	M	Washer - 8.4mm	x6
D	Washer - 8.4mm	x6	N	Cross Member	x1
E	Stepped Spacer - 5 mm	x2	O	6mm x 20mm Hex Head Screw	x2
F	Stepped Spacer - 13 mm	x2	P	Washer - 6.4mm	x2
G	Mounting Bracket	x2	Q	Side Rack	x2
H	Lens Head Screw with Lock Nut	x4	R	$\frac{3}{8}$ " x $\frac{3}{4}$ " Allen Key Bolt	x8
I	Front and Back Clamp	x2	S	$\frac{3}{8}$ " Spring Washer	x8
J	Protection Film	x2			

Parts Diagram:



Parts List

Installation Instructions:

Step 1:

Remove the motorcycle seat and unscrew the four OEM bolts.

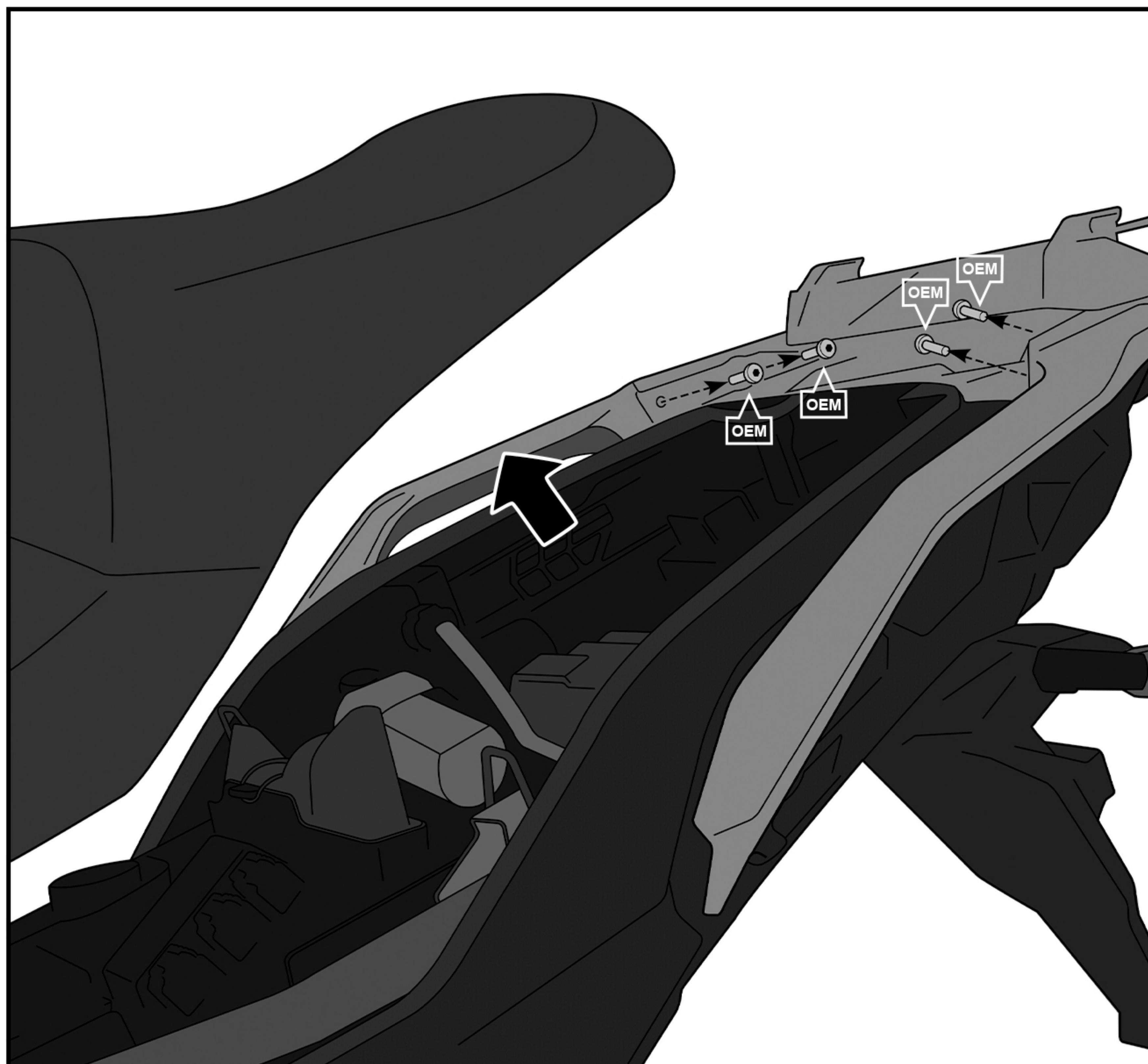


Fig 1. Removing the seat and the OEM bolts

Step 2:

Install the mounting bracket (A) to both sides of the fender using provided bolts [C, D], washers [D] and spacers [E, F]. See Figure 2.

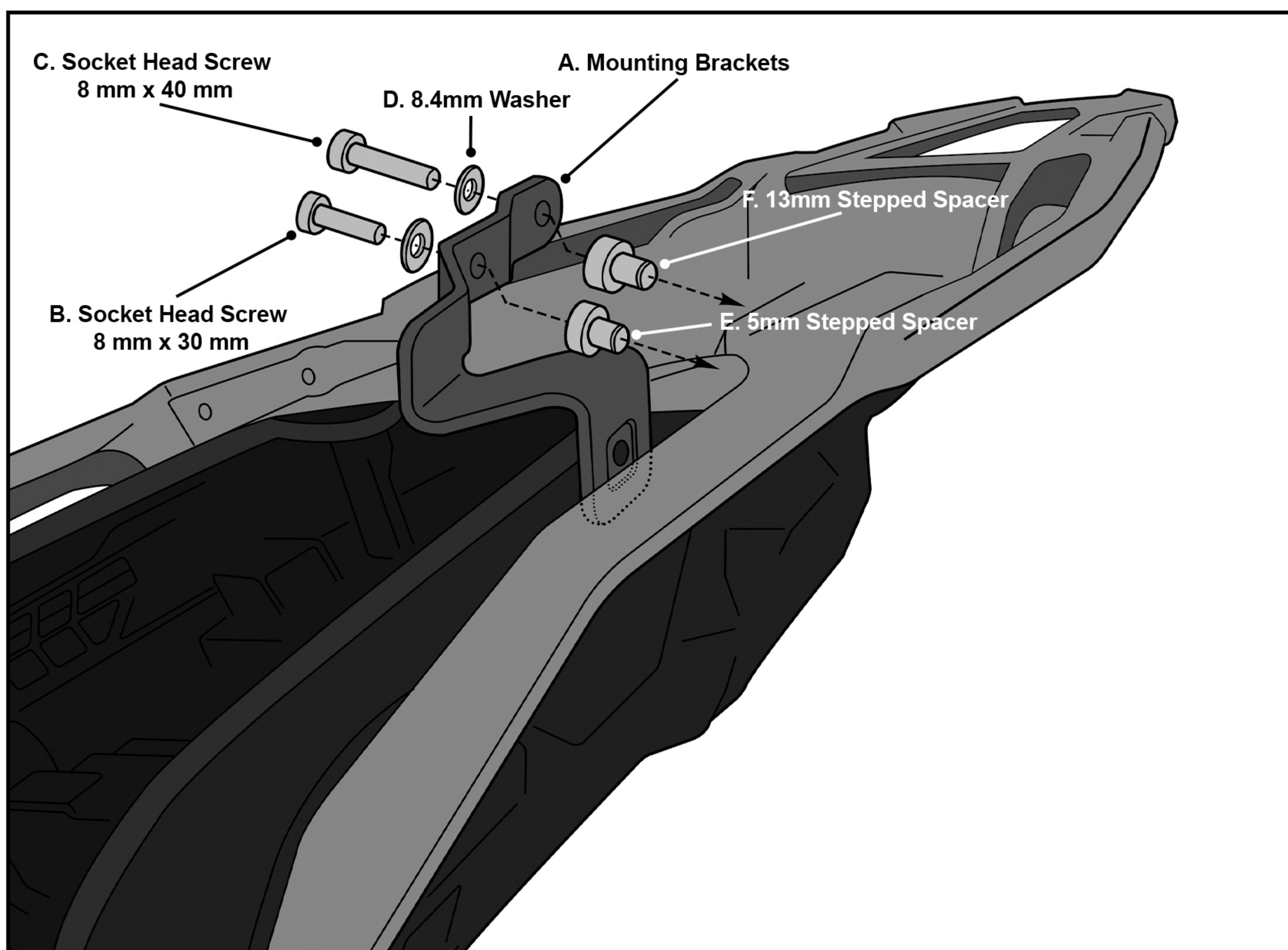


Fig 2. Installing the bent mounting tab

Step 3:

Remove passenger heel-guard from both sides of the motorcycle. Reinstall the heel-guard with flat mounting brackets [G] using the supplied screws [H] and nuts. See Figure 3.

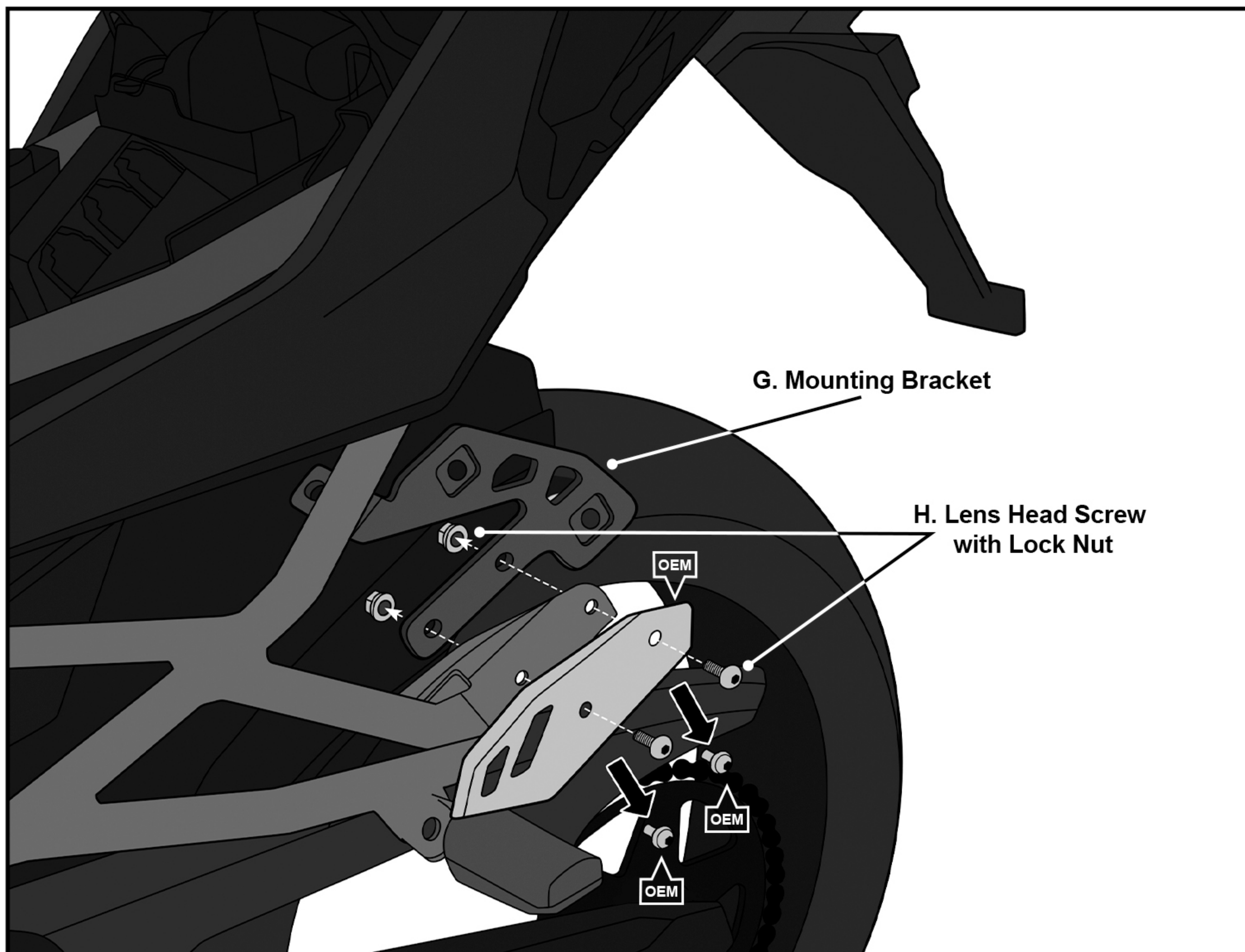


Fig 3. Reinstalling the mounting heel with flat mounting brackets

Step 4:

Cut the protection film in half and paste inside the front and back clamp [I] and install the clamp to the motorcycle frame. See Figure 4.

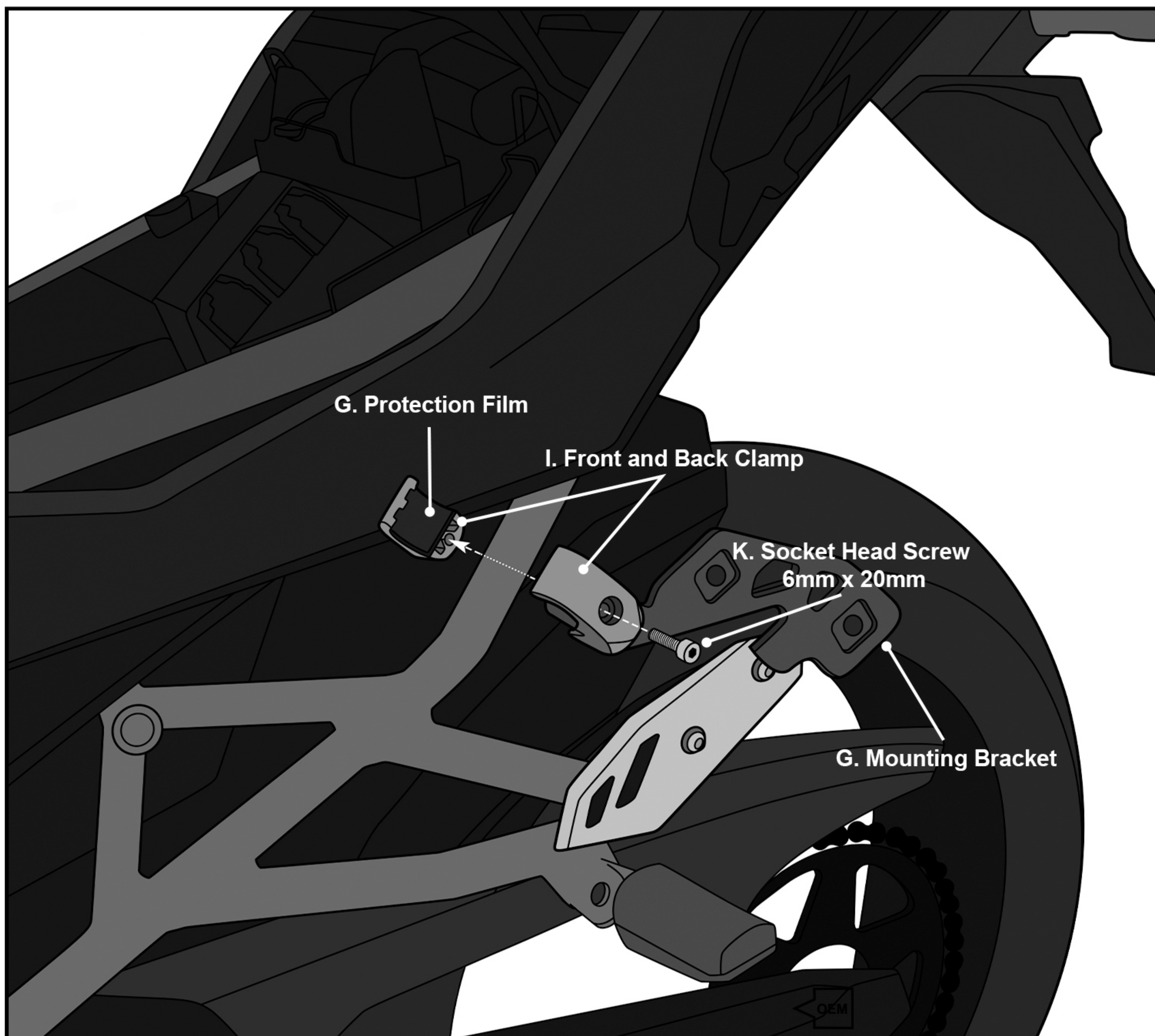


Fig 4. Installing the clamp

Step 5:

Install the mounting bracket [G] on each side to the corresponding clamp [I] using the supplied socket head screw [L] and washer.

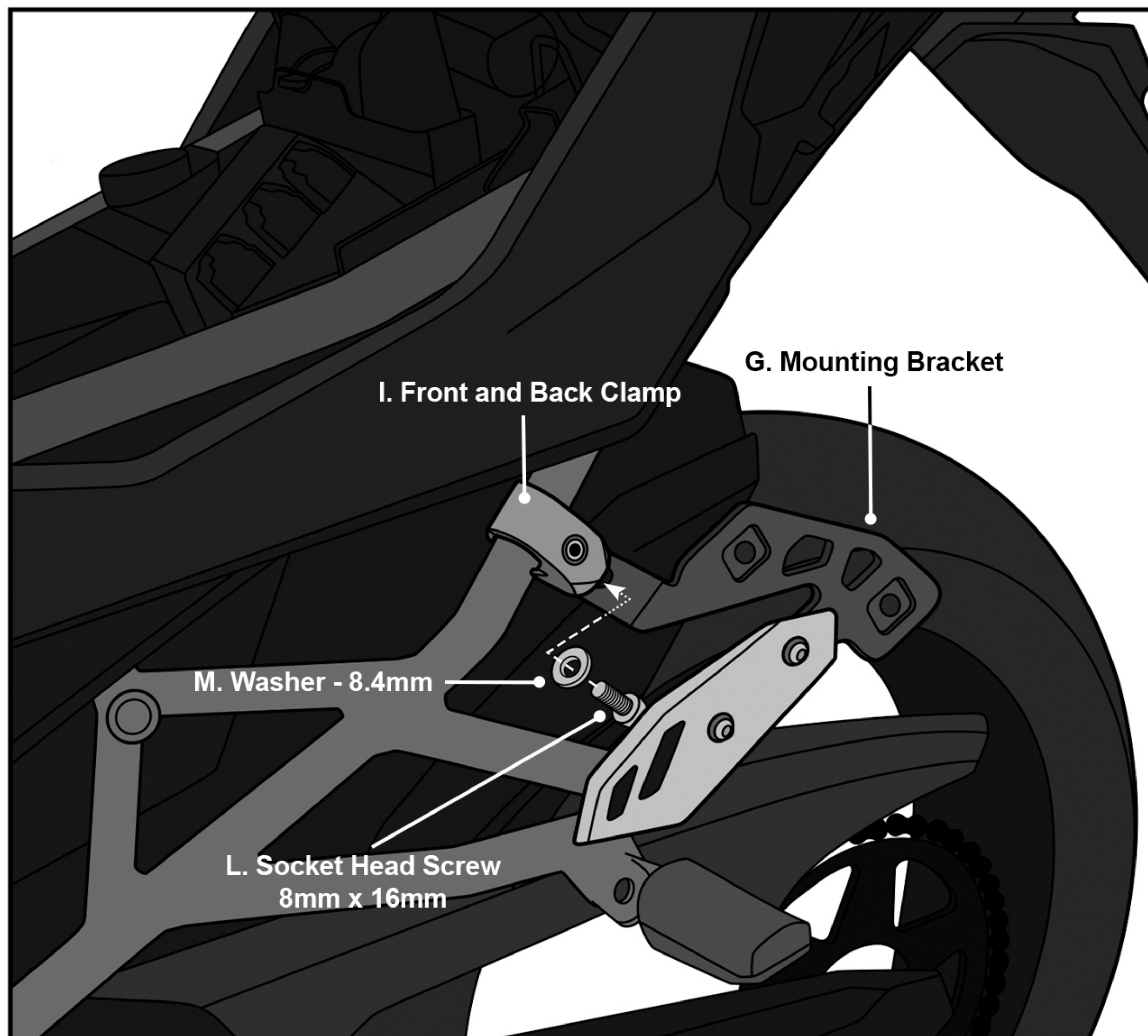


Fig 5. Attaching the mounting brackets to the clamp

Step 6:

Remove the OEM license plate bracket by removing the 2 OEM screws holding it in place. Discard the OEM screws and reinstall the bracket with the Cross Member [N]. Use the provided hex-head screws [O] and washers [P] to secure the cross member and the OEM license plate bracket to the bike. See Figure 6.

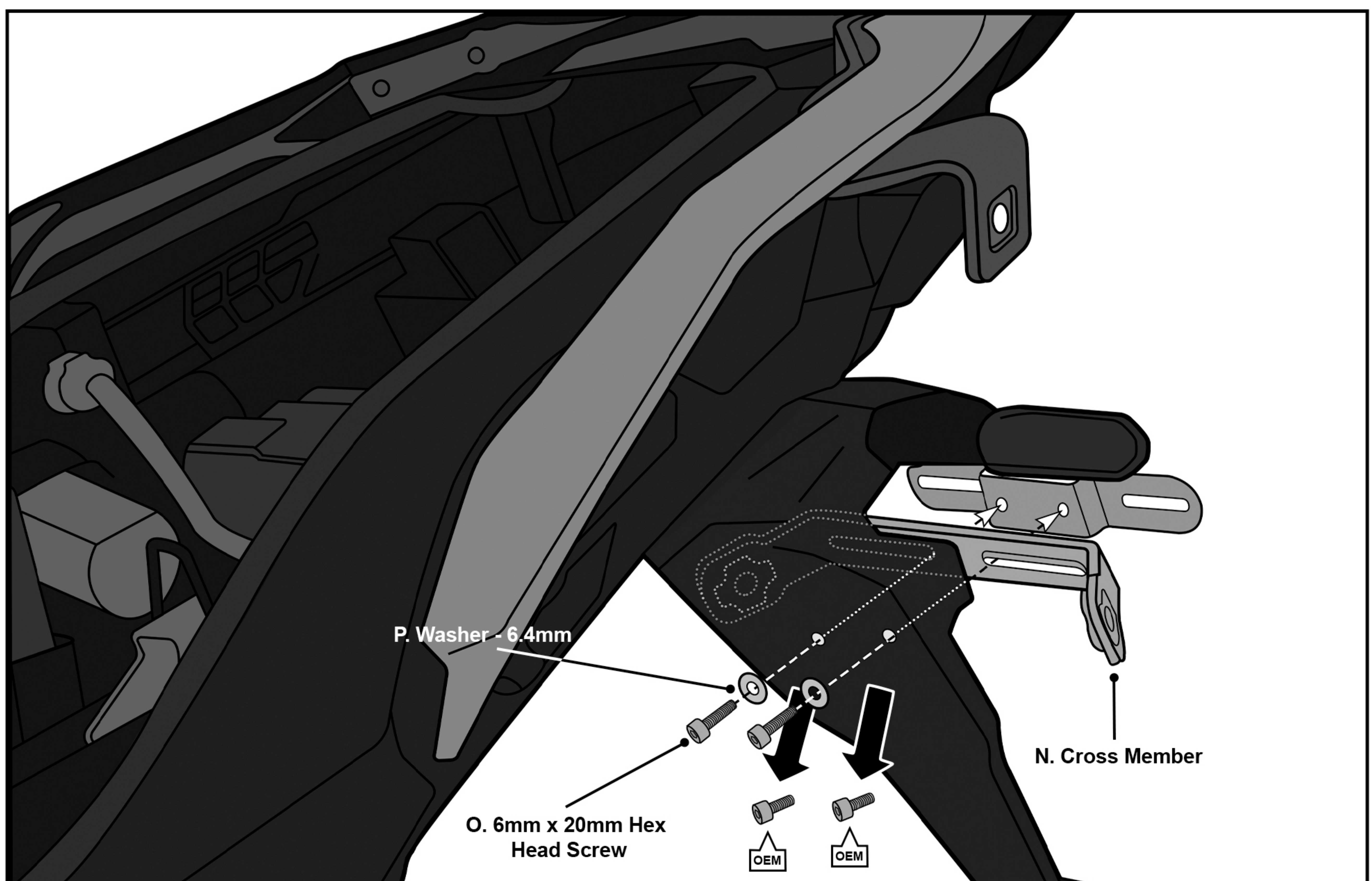


Fig 6. Installing the crossmember

Step 7:

Attach the mounting brackets to both sides of the motorcycle using the Allen key Screws [R] and $\frac{3}{8}$ " Spring Washers [S] See Fig 7. Do not tighten fully until all screws are in place.

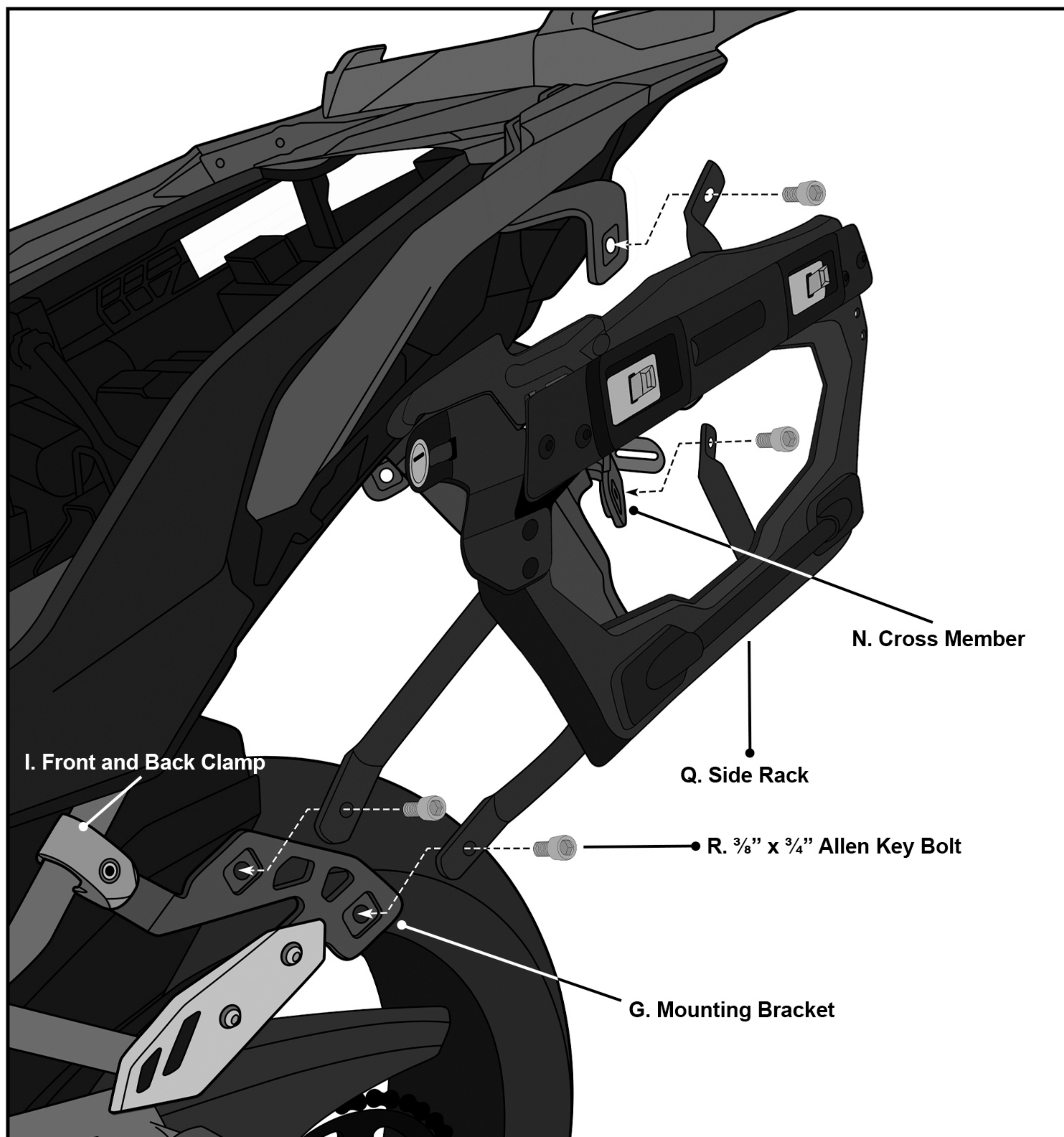


Fig 7. Attaching the Mounting Brackets

Step 8:

Apply medium thread-locker and tighten all the screws fully to 15 N-m of Torque.

Step 9:

Place the side case against the rack so the channel on the back of the case sits on the rod on the bottom rod on the side rack. Pull the lever on the bracket and push the bag until you hear the click. Push the lever down.

The side racks come with locks to secure your bags against theft. Use the included key to lock the side case to the side rack when leaving your bike unattended.

Congratulations, You have successfully installed the Viking Apex Aluminium Side Case and now you are ready to ride.

Warnings!

- Do not install if any of the mounting hardware is damaged or impaired.
- If you have any questions or concerns about the installation, call Viking Bags or consult a certified motorcycle mechanic.
- Ensure no part of the bag obstructs any of the moving parts of the bike.
- Viking Bags is not liable for any damage or injury caused because of improper installation or use of the product.
- Improper loading can cause vehicle handling problems leading to death or severe injury.
- Periodically check the bolts on your bike for tightness.